



**MITSUBISHI**  
**380**  
**SERIES 2**



Optional Sunroof shown.



## 380

Introducing the Mitsubishi 380 'Series 2'.

The Mitsubishi 380 has been designed and engineered from the ground up to be a completely new car for Australian drivers and Australian conditions. In fact, the Mitsubishi 380 provides a unique combination of power, performance, space and agile road handling that breaks new ground in the Australian large car market.

Mitsubishi 380's design philosophy means that large car buyers will no longer have to compromise on sporty performance and handling in return for larger interior space.

The 380 is powered by an impressive 3.8 litre V6 SOHC 24-valve engine, which develops 175kW of power and 343Nm of torque matched to a 5-speed manual or 5-speed INVECS II 'Smart Logic' automatic transmission with 'Sports Mode' sequential shift.

The 380 is available in 5 different models. The standard model 380 ES, the sporty 380 SX and 380 VRX, the luxuriously appointed 380 LX and the sports luxury 380 GT model.

All 380 models boast tremendous levels of specification and features for drivers looking for the right large car. Standard features include 4 airbags, automatic climate control air conditioning, ABS brakes, 4 power windows, cruise control, power adjust driver's seat, steering wheel audio remote controls and loads more.

The Mitsubishi 380 has put the fun back into large car driving.



1



2

## 380 GT

The Mitsubishi 380 GT is the signature model in the 380 range... the ultimate blend of sports performance and luxury appointments. These include 17" luxury sports style alloy wheels, mesh grille, sports style front and rear bumpers with integrated air dams, fog lamps and integrated rear spoiler.

The 380 GT also boasts a powerful 3.8 litre V6 engine with 5-speed INVECS II 'Smart Logic' automatic transmission and 'Sports Mode' sequential shift as standard.

Compact exterior style - incredibly spacious on the inside. High-quality enhancements continue with luxurious leather sports seating, a leather-wrapped steering wheel, shift knob and handbrake lever, unique Slate Mahogany accent panels and sporty instrumentation with 'ice-blue' LED illumination.

A multi-function display, positioned on top of the centre console, displays time, ambient temperature, climate control air conditioning status, Electric Time And Control System (ETACS) and audio system settings.

Sports profile seats offer generous shoulder and hip room for superior comfort. But it's not just comfort for comfort's sake. Long-distance driving is made easy as driver fatigue is reduced with body-contoured sports seating, ergonomically positioned door and centre console armrests.



4

### KEY 380 GT FEATURES:

- 1 Driver's 10-Way Power Seat with Memory
- 2 Electric Chromatic Mirror (Auto-dimming)
- 3 AM/FM Radio/In-dash 6 CD/MP3 with Climate Control Automatic Air Conditioning
- 4 Sports Luxury Instrumentation

### 380 GT FEATURES:

- Reversing Sensors
- 17" Alloy Wheels
- Sports Leather Interior and Seats
- Front Passenger 6-Way Power Seat
- Electric Sunroof with Slide and Tilt (Optional)



3





## 380 LX

With the introduction of the 380 LX to the Australian car scene, the Australian big six 'company car' achieves new levels of luxury. In fact, the 380 LX means the 'company car' has now been elevated to 'boardroom' status.

The 380 LX has an extensive list of equipment, including full chrome grille and surround, 16" alloy wheels, front fog lamps and chrome rear accent. Inside the 380 LX you'll find a centre high-mounted audio display blending cherry maple wood print with warm silver accent trim on the dashboard and door panels.

The 380 LX further adds an 8-speaker electronic-tune AM/FM radio/in-dash 6 CD/MP3 audio system. But why stop there? The European inspired luxury 380 LX has sumptuous stone leather seating, and a 10-way power driver's seat with 3 memory settings and 6-way power front passenger seat.

The 380 LX is powered by the 3.8 litre V6 engine with a 5-speed INVECS II 'Smart Logic' automatic transmission with 'Sports Mode' sequential shift.



Optional 17" Alloy Wheels shown



### KEY 380 LX FEATURES:

- 1 5-speed 'Sports Mode' Automatic Transmission
- 2 Driver's 10-Way Power Seat with 3 Memory Settings
- 3 Electric Chromatic Mirror (Auto-dimming)
- 4 Leather-wrapped Steering Wheel/Shift Knob/Handbrake Lever

### 380 LX FEATURES:

- 16" Alloy Wheels
- 17" Alloy Wheels (optional)
- Traction Control (TCL)
- Driver and Passenger 6-Way Power Seat
- Chrome Exhaust
- 6-Disc CD Changer - 8 Speakers
- Automatic Climate Control Air Conditioning with Rear Ducts
- Electric Sunroof with Slide and Tilt (Optional)





## 380 VRX

The Mitsubishi 380 VRX features a level of standard equipment that one would normally expect to find on a premium European sports sedan. In addition to its responsive 'torque demand' 3.8 litre 24-valve V6 engine, the 380 VRX features specially-tuned MBOS sports suspension, rally-derived 4-wheel ventilated disc brakes with turbo-fin grid ventilation, ABS with Electronic Brakeforce Distribution (EBD) and Traction Control (TCL).

Standard on the 380 VRX are features such as 17" 8-spoke alloy wheels, sports exhaust with chrome tip, sports style front and rear bumpers, mesh sports grille, integrated fog lamps, rear spoiler and an auto-dimming electric chromatic mirror.

Interior designers have pushed the barriers further with their work on the body-hugging sports style seating. The interior features embossed leather seats with technical mesh accents across the instrument panel.

For the ultimate driver's experience, the 380 VRX is available in a close ratio 5-speed manual or a 5-speed INVECS II automatic transmission with 'Sports Mode' sequential shift for that clutchless manual experience.



### KEY 380 VRX FEATURES:

- 1 Close Ratio 5-speed Manual Transmission
- 2 Sports Instrumentation
- 3 Sports Style Leather Seats

### 380 VRX FEATURES:

- MBOS Sports Suspension
- Traction Control (TCL)
- 4-Wheel Ventilated Disc Brakes
- Rear Spoiler
- 17" Alloy Wheels
- Driver's 6-Way Power Seat
- 6-Disc CD Changer (MP3) - 8 Speakers
- Auto-dimming Electric Chromatic Mirror







Rear Spoiler shown - Optional Dealer fitted accessory.



## **380 SX**

The Mitsubishi 380 SX offers a unique combination of sports styling and dynamic handling. With its responsive 'torque demand' 3.8 litre 24-valve V6 engine with a 5-speed manual transmission or a 5-speed INVECS II 'Smart Logic' automatic transmission with 'Sports Mode' sequential shift, the SX offers the ultimate driver's experience. Featuring specially-tuned MBOS sports suspension, rally-derived 4-wheel ventilated disc brakes with turbo-fin grid ventilation.

The Anti-lock Braking System (ABS) with Electronic Brakeforce Distribution (EBD) and Traction Control (TCL) all aid the driver when faced with challenging road conditions.

The exciting new sporty SX includes standard features such as 17" 6-spoke alloy wheels, sports exhaust with chrome tip, sports style front and rear bumpers, mesh sports grille and integrated fog lamps.

With unprecedented style and comfort, the SX offers body-hugging sports style seats, mesh knit fabric with technical mesh accents across the instrument panel, leather-wrapped steering wheel and gearshift knob.

Adding to this is the intelligent design of the cockpit, with automatic climate control air conditioning, 6-disc CD changer with MP3 compatibility, cruise control and a 6-way power drivers seat.

### **KEY 380 SX FEATURES:**

- 1 5 Speed 'Sports Mode' Automatic Transmission
- 2 Sports Style Seats
- 3 Sports Instrumentation
- 4 Fog Lamps

### **380 SX FEATURES:**

- MBOS Sports Suspension
- 4-Wheel Ventilating Disc Brakes
- Sports Mesh Grille
- Chrome Exhaust Tip
- 17" Alloy Wheels



## 380 ES

The Mitsubishi 380 ES is our 'standard' model. But its features, performance and handling mean that the Mitsubishi 380 ES is anything but 'standard'.

The 380 ES is powered by the all-new 'torque demand' 3.8 litre V6 engine with a 5-speed manual transmission or optional 5-speed INVECS II 'Smart Logic' automatic transmission with 'Sports Mode' sequential shift.

Standard features that add to the comfort and convenience of the driver include remote keyless entry with boot-opener, 4 power windows and steering wheel audio controls.

The centrally located dash control unit includes an AM/FM radio/CD/MP3 player and automatic climate control air conditioning with rear outlet ducts.

Safety features include dual front and side SRS airbags, 3-point seatbelts for all five seating positions, front seatbelt pre-tensioners and emergency door unlock.



### KEY 380 ES FEATURES:

- 1 Cruise Control
- 2 Power Windows - Front and Rear
- 3 Steering Wheel Audio Remote Controls
- 4 Stylish Instrumentation
- 5 Wide Spacious Interior

### 380 ES FEATURES:

- Driver and Front Passenger SRS Airbags
- Front Side SRS Airbags
- Automatic Air Conditioning with Rear Ducts
- Anti-lock Brakes (ABS) with Electronic Brakeforce Distribution (EBD)
- Power Adjust Driver's Seat
- Safety Style Pack (Traction Control and 16" 6-spoke Alloy Wheels: Optional)





## BUILD QUALITY

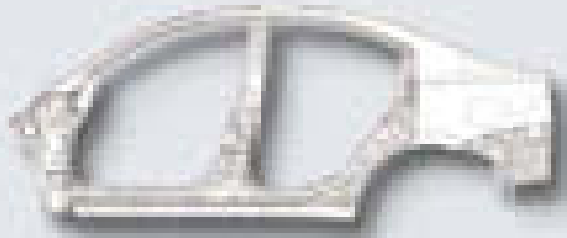
### AUSTRALIA'S BEST QUALITY BUILT CAR EVER.

Mitsubishi Motors Australia's designers and engineers set out to make the Mitsubishi 380 the best quality car ever built in Australia.

In 2004, Mitsubishi Motors Australia made a huge investment in the largest body-parts press in Australia. This world-class technology stamps the complete side of the car in one action. This process means there are no more brazed joint lines to grind and file, no more critical alignment challenges to be maintained.

Mitsubishi is also Australia's first automotive manufacturer to use innovative and cutting-edge 'Toy Tab' vehicle assembly technology. These small tabs of steel are bent by robots to hold together panels which form the body of the vehicle. The body is therefore assembled progressively without the need for welding at each stage. Once all the panels are assembled and held firmly in place, the whole structure is then welded together.

The result is improved body accuracy and body rigidity which helps reduce wind noise and road noise. Tighter tolerances also minimise buzz, squeak and rattle with tighter fitting doors, which open and close easily.



The 380 is the first Australian built car that utilises Composite Panel Technology (CPT) in its monocoque subassemblies. This CPT utilises laser-welding techniques to join different grades and thicknesses of steel together into one sheet ready for pressing. The advantage being that it allows the production of very strong and stiff body parts without the usual weight disadvantage.

The end result? A much stiffer and lighter body enabling more agile and direct ride and handling characteristics.

## POWER AND PERFORMANCE

### ENGINE.

The 380 is powered by a 3.8 litre V6 SOHC 24-valve engine. This new engine develops an impressive and fuel-efficient 175kW of power and 343Nm of torque.

The engine delivers superior acceleration performance with a time of 0-100km/h in a very quick 7.6 seconds and 80-100km/h in 2.8 seconds, so whether it's from a standing start or during overtaking, you'll always have more than enough power.

The engine means the 380 has the acceleration needed for safer overtaking combined with the sheer grunt needed to tow heavy loads. In fact, without any modifications to suspension, body or braking, the 380 is rated to tow 1600kg at highway speeds.

The Mitsubishi 380 meets stringent EURO 3 emission standards - much tougher emission standards that all models produced from Jan 06 must comply with.

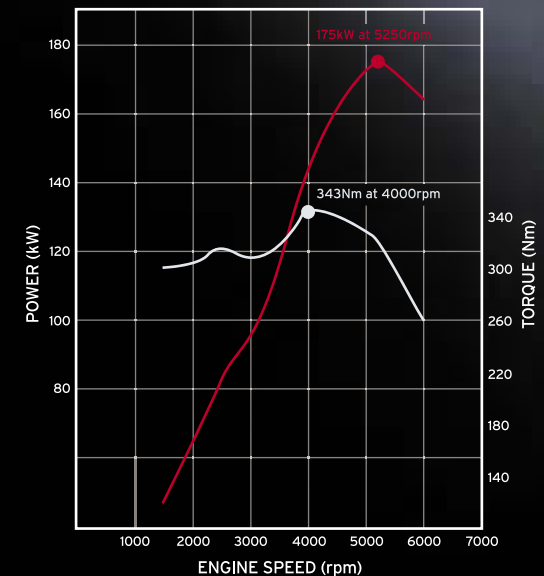
The Mitsubishi 380 is the first Australian built car to meet these new low-emission standards.

Controlling the engine and transmission is the Bosch Engine Management System-EMS. This system employs a torque-demand strategy controlling the engine's fuelling and ignition based on both the driver's input and engine operating conditions.

This makes for faster and smoother response of the engine when an increase or decrease of torque is required, such as during gear changes or rapid acceleration. And instead of the traditional cable system, the throttle is controlled electronically using Drive by Wire technology.

This results in the throttle opening being controlled more precisely, resulting in better control of all engine operating variables for improved driveability.

MITSUBISHI 380 - ENGINE POWER & TORQUE





## TRANSMISSION.

The 380 offers the driver a choice of two sophisticated transmissions. The new close ratio 5-speed manual transmission adds to driver's experience due to smoother, less notchy and more precise shifting between the gears. The 5-speed manual transmission is standard on the 380 ES, 380 SX and 380 VRX models.

The 5-speed INVECS II 'Smart Logic' automatic transmission with 'Sports Mode' sequential shift is standard on all other models.

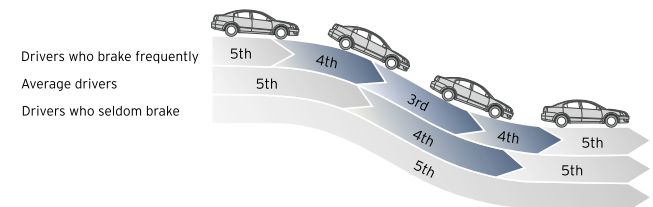


INVECS II - short for Intelligent and Innovative Vehicles Electronic Control System - operates by switching between logic controls. Optimum Shift Control gathers input from vehicle and driver, and shifts gears in the way a good driver would using a manual.

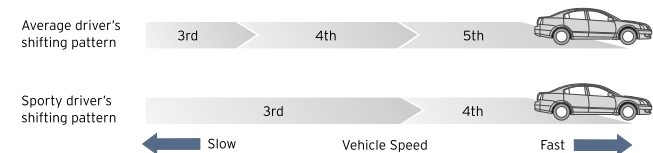
Adaptive Shift Control monitors the driver's style and alters shift patterns to suit individual preferences. The Mitsubishi 380 is the only locally made vehicle to offer a 5-speed automatic in the standard model. 'Sports Mode' makes the INVECS II 'Smart Logic' automatic transmission even more flexible. When the shift lever is moved sideways, 'Sports Mode' is engaged, letting the driver push down a gear, giving the driver the convenience of an automatic, or the performance of a slick, clutch-less manual.

## INVECS II 'SMART LOGIC'.

### ADAPTIVE SHIFT CONTROL GOING DOWNHILL



### ADAPTIVE SHIFT CONTROL DURING ACCELERATION



## RIDE AND HANDLING

Mitsubishi's legendary Evolution models have won both World Rally Championship and Dakar many times. So it should come as no surprise that the 380 has been engineered to excite. In fact, the 380 provides great ride quality with exhilarating cornering performance and agile handling normally associated with a much smaller car.



### SUSPENSION.

Mitsubishi's Body Optimised Suspension (MBOS) four-wheel independent suspension system is engineered to provide superior stability, excellent ride quality and agile handling. The front unit utilises the proven MacPherson strut front suspension design with a low mount cross member and steering rack to provide the precise control and superior handling capability that large car drivers demand. Large diameter strut cylinders and springs are matched according to the mass of the wheels, tyres and vehicle weight to deliver the best combination of ride and agility.

The rear suspension is a sophisticated low-mount, multi-link arrangement. This design helps the 380 achieve excellent ride quality and handling stability while offering a lower floor in the cargo area.

In a further effort to provide superior handling, the 380's suspension designers made the rear suspension control arms as long as possible to maximise the movement of the independent suspension and allow for optimal control over uneven surfaces.

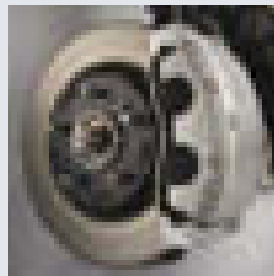
The Mitsubishi 380's drive is through the front wheels, offering a number of advantages. It provides improved tyre grip due to the weight of the engine being over the 'driving' wheels rather than the rear wheels. Front-wheel drive means the 380 is 'pulled' through a corner, rather than 'pushed'. This means the 380 is more forgiving in wet or difficult conditions.

Should lack of attention by the driver or unexpected road conditions result in the car starting to slide, the driver's natural inclination is to back off the accelerator rather than keep the power on. Should this happen, the 380's front-wheel drive means the car will continue to steer into the apex of the corner, to ensure the driver can easily maintain control. Increased driver confidence isn't the only benefit of front-wheel drive. A transverse mounted engine and absence of a rear transmission shaft provides increased interior space, especially in the centre console, foot-well and centre rear seating positions.

### BRAKE TECHNOLOGY.

The sheer size of the 380's brakes allows them to repeatedly generate unsurpassed levels of braking force, providing outstanding big car braking performance.

The new design on all 4-discs feature an innovative turbo-fin grid ventilation pattern for improved airflow and even heat distribution. These brakes deliver outstanding braking performance with an impressive stopping distance of 43.0 metres when braking from 100km/h to 0km/h. This braking technology is another engineering triumph inherited from Mitsubishi's rally-bred Lancer Evolution and does comply with the European Motor Sport Test (AMS) test.



FRONT BRAKE



REAR BRAKE

## BODY SAFETY

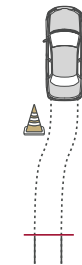
### BODY STRUCTURE.

At the heart of any integrated safety system is outstanding body design. Mitsubishi's Reinforced Impact Safety Evolution (RISE) monocoque body design combines an energy absorbing front section with a strong, rigid occupant cell to provide outstanding protection in the event of any accident. While high tensile steel reinforcing bars located in the doors of the vehicle, combined with energy absorbing material in the trim material of the side pillars and roof rail are designed to further protect the occupants in the event of an accident.

As evidence to Mitsubishi's commitment to safety in motoring, the new 380 is well specified with a raft of active and passive safety features.

## ACTIVE SAFETY

### WITH ABS



### WITHOUT ABS

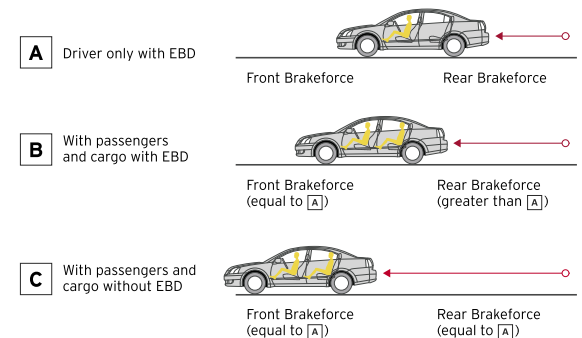


### ANTI-LOCK BRAKES.

Anti-lock Braking System (ABS) with Electronic Brakeforce Distribution (EBD) is also standard across the 380 range. ABS adjusts the braking pressure to prevent the wheels from locking up under emergency or hard braking conditions, helping you maintain steering control and avoid hazards.

The EBD system works with the ABS computer to evenly modulate braking force between front and rear wheels to provide optimum stopping distances regardless of vehicle load.

### STOPPING DISTANCE WITH EBD.





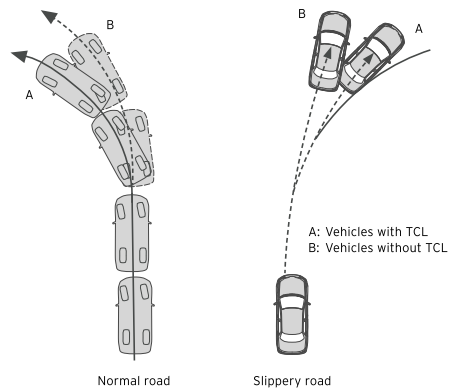
## PASSIVE SAFETY

### TRACTION CONTROL.

The Mitsubishi 380 SX, 380 VRX, 380 LX and 380 GT are fitted with Traction Control (TCL) as standard and optional in 380 ES.

Traction Control (TCL) is a key safety and control feature and operates to improve stability and acceleration performance on a wide variety of surfaces, especially in slippery conditions.

### CORNERING PERFORMANCE AT ACCELERATION.



### REVERSING SENSORS.

Reversing sensors are standard on 380 GT and available on all other 380 models. 4 sensors mounted in the rear bumper measure distances for safer, more accurate parking and reversing. A warning tone within the cabin increases in frequency the closer the vehicle is to the object or person. This switches on automatically when reverse gear is engaged.

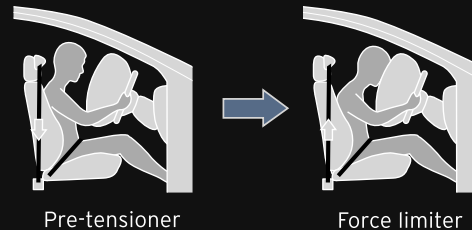
### REST REMINDER.

Long-distance drivers will be delighted to learn that Australia's new car has an in built 'co-pilot' - the 'rest reminder'.

It provides an audible and visual warning when a set period of actual driving time has elapsed. The time is displayed in one-minute intervals. There are three progressive warnings for the rest reminder. The rest reminder cannot be turned off when there are less than 30 minutes on the rest reminder display or the rest reminder has been activated. The vehicle ignition key must be turned to the 'OFF' position while the vehicle is stationary.

### SEATBELTS.

All of Mitsubishi 380's five seating positions have 3-point seatbelts for passenger safety. The front seatbelt systems also include pre-tensioners and force limiters that combine to minimise the potential for serious injury in the event of a collision.



### SRS AIRBAGS.

To provide ultimate protection in the event of a frontal collision, the Mitsubishi 380 is fitted with driver and front passenger SRS airbags. Whilst for superior side impact protection, the new 380 has driver and passenger SRS airbags in the seats.

### BREAKAWAY PEDAL SYSTEM.

To help prevent lower limb injuries in the event of a collision, the new 380's safety system features breakaway clutch, accelerator and brake pedals.

### EMERGENCY DOOR UNLOCK.

380 has emergency door unlock in all four doors in the event of a front or side impact.



## CONVENIENCE

### BLUETOOTH® CONNECTIVITY.

Available as standard on the 380 GT and available across the remainder of the 380 range, is a fully integrated mobile phone hands-free system with Bluetooth® connectivity. With hands-free mobile phone operation through the vehicle's audio system, calls can be made or answered via a single switch mounted on the dash. When a call is answered, the audio system is muted. When a Bluetooth® compatible phone is within the vehicle, it will be automatically connected to the Bluetooth® module.

### 10-FUNCTION TRIP COMPUTER.

The 380's 10-function trip computer provides the driver with a large amount of information, which can be used in a variety of ways, such as modifying driving technique to maximise fuel economy. Functions include: average speed, speed alarm, instant fuel consumption, average fuel consumption, total fuel used, range to empty, travel time, total distance travelled, rest reminder and service reminder.

### MULTI-FUNCTION CENTRE DISPLAY.

Mitsubishi 380's high technology 4.9" Thin Film Transistor (TFT) screen in the centre console provides drivers with an interface with the vehicle and enables them to customise features. Such as interior light auto cut-out timer, windscreen wiper speed sensitive operation, headlight auto cut-out, door locking/unlocking confirmation by turn signals, door locking/unlocking confirmation by horn, time until automatic relock after unlock, two stage unlock, buzzer when vehicle door ajar and vehicle moving (additional buzzer when turn signal is used) and interior lamp battery saving cut-out. Standard on 380 SX, 380 VRX, 380 LX and 380 GT.

### STEERING WHEEL AUDIO CONTROLS.

The 380's audio system controls are mounted on the backside of the steering wheel. This allows the driver to adjust audio settings while keeping both hands on the wheel and eyes on the road. Controls include source change (radio/CD), volume up and down, scan (track and station) up and down and scan preset 1 to 6.



1



2



3



4

- 1 Bluetooth® Instrument Switch
- 2 Multi-Function Centre Display
- 3 Steering Wheel Audio Controls
- 4 Rear Cup Holders
- 5 4-Button Remote Control Unit

### STORAGE.

There's a place for everything in Australia's new car. In fact, every where you look you'll discover that the 380's intelligent and innovative interior design provides numerous locations for storage items - front door pockets, 2 cup holders in the console, console box with lid, 2 cup holders in the rear armrest, glove box with lamp, coin tray, sunglasses holder and large seat back pockets.

### SECURITY.

The 380 provides high levels of both vehicle and personal security. There are 4 buttons on the remote control unit. The vehicle can be opened with the press of a button on the key. One press unlocks the driver's door and fuel tank filler door, a second press then unlocks all remaining doors.

Doors will automatically re-lock after preset time. Headlamps and interior light will remain on after the driver has exited and locked the vehicle, switching off after a user-set period of time. The car alarm and immobiliser protect all doors, the boot and the bonnet. When activated, the alarm sounds the vehicle horn and the turn lamps flash.

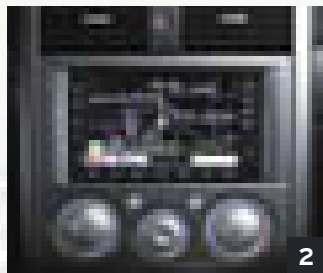
You can also press the remote control switch to open the boot lid. It can also help signal for attention by setting off the panic alarm.



5



## 380 ACCESSORIES





Bonnet Protector  
Headlamp Protector

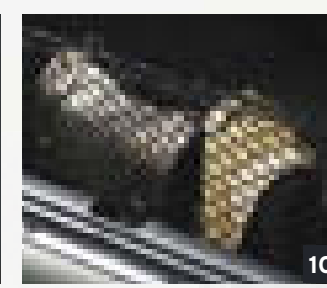
Side Weathershield

Fog Lamps  
Fog Lamp Protector

Front Mudflaps

16" Alloy Wheels

- 1 Bluetooth® Connectivity
  - 2 Satellite Navigation†
  - 3 Boot Liner
  - 4 Non-slip Boot Grip\*
  - 5 Boot Flap Scuff Guard\*
  - 6 Rubber Mats
  - 7 Carpet Mats
  - 8 Number Plate Holder\*
  - 9 Ash Cup and Lighter
  - 10 Parcel Net
- \* Diamond Spectrum Accessories  
† Where fitted the multi-function display screen is replaced with the 380 digital clock display.



## 380 SPECIFICATIONS

### ENGINE

3.8 litre V6, SOHC 24-valve with roller rockers and auto lash adjusters	
Bore x stroke	95mm x 90mm
Capacity	3828cm <sup>3</sup>
Compression ratio	10.0:1
Fuel system	Electronically controlled multi-point injection

### PERFORMANCE

Power (DIN)	175kW @ 5250rpm
Torque (DIN)	343Nm @ 4000rpm

### FUEL TANK CAPACITY

67 litres

### FUEL CONSUMPTION l/100km (ADR 81/01)

5-speed manual	11.4
5-speed auto	10.8

### TRANSMISSION

Manual transmission	5-speed, all synchromesh, floor shift
Auto transmission	5-speed INVECS II 'Smart Logic' automatic transmission with 'Sports Mode' sequential gearshift

### GEAR RATIOS

Ratio	5-SPEED MANUAL	5-SPEED AUTO
1st	3.333	3.789
2nd	2.105	2.162
3rd	1.407	1.421
4th	1.031	1.000
5th	0.804	0.686
Reverse	3.416	3.117
Final drive	4.111	3.325

### BRAKES

Power-assisted 4-wheel discs	Anti-lock Braking System (ABS) with Electronic Brakeforce Distribution (EBD)
Front	294mm x 28mm vented discs with twin piston calipers
Rear	302mm x 18mm vented discs with single piston calipers

### SUSPENSION

Mitsubishi's Body Optimised Suspension (MBOS) system.	
Front	Independent MacPherson strut with coil springs, lower A-arm and anti-sway bar
Rear	Independent low mount multi-link with upper and lower control arms, coil springs, telescopic shock absorbers and anti-sway bar



### STEERING

Type	Power-assisted rack and pinion
------	--------------------------------

### TURNING CIRCLE (m)

11.2

### DIMENSIONS (mm)

	380 ES	380 SX	380 VRX	380 LX	380 GT
Overall length	4837	4855	4855	4837	4855
Overall width	1840	1840	1840	1840	1840
Overall height	1480	1480	1480	1480	1480
Front overhang	984	989	989	984	989
Rear overhang	1103	1116	1116	1103	1116
Wheelbase	2750	2750	2750	2750	2750
Track					
Front	1570	1570	1570	1570	1570
Rear	1570	1570	1570	1570	1570
Ground clearance	162	162	162	162	162

### INTERNAL

Head room (front)	1011	1011	1011	1011	1011
Head room (rear)	941	941	941	941	941
Shoulder room (front)	1455	1455	1455	1455	1455
Shoulder room (rear)	1446	1446	1446	1446	1446
Leg room (front)	1083	1083	1083	1083	1083
Leg room (rear)	955	955	955	955	955
Total leg room	1775	1775	1775	1775	1775

### KERB MASS (kg)

Manual	1625	1630	1635	-	-
Automatic	1665	1670	1675	1670	1685

### BOOT CAPACITY (L)

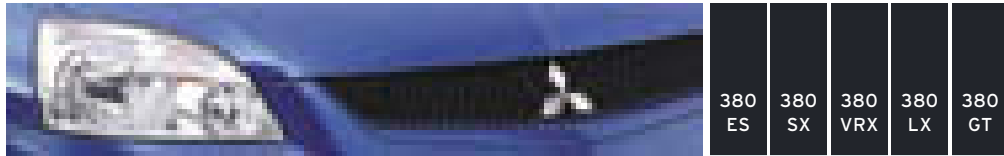
437

### MAXIMUM TOWING CAPACITY (kg)

Braked trailer	1600kg
Unbraked trailer	570kg

### ELECTRICAL SYSTEM

Battery	12V, 600CCA
Alternator	110A



## MECHANICAL

### POWER TRAIN

	380 ES	380 SX	380 VRX	380 LX	380 GT
3.8 litre V6 SOHC 24-valve MPI engine	S	S	S	S	S
Maximum power (175kW @ 5250rpm)					
Maximum torque (343Nm @ 4000rpm)					
5-speed manual transmission	S	S	S	-	-
5-speed INVECS II 'Smart Logic' automatic transmission					
with 'Sports Mode' sequential gearshift	O	O	O	S	S
LPG compatible engine	S	O	-	S	-

### MECHANICAL

	380 ES	380 SX	380 VRX	380 LX	380 GT
Traction Control	O <sup>1</sup>	S	S	S	S
Power assisted 4-wheel performance disc brakes	S	S	S	S	S
Front - 294mm x 28mm vented discs with twin piston calipers	S	S	S	S	S
Rear - 302mm x 18mm vented discs with single piston calipers	S	S	S	S	S
Anti-lock Braking System (ABS) with					
Electronic Brakeforce Distribution (EBD)	S	S	S	S	S
Power-assisted steering	S	S	S	S	S

### SUSPENSION

	380 ES	380 SX	380 VRX	380 LX	380 GT
Independent front suspension MacPherson strut	S	S	S	S	S
with lower A-arm and stabiliser bar					
Independent rear suspension - independent low mount multi-link	S	S	S	S	S
with upper and lower control arms, coil springs					
and telescopic shock absorbers					
Rear stabiliser bar	S	S	S	S	S
Sports-tuned suspension	-	S	S	O <sup>2</sup>	S
Sports strut tower brace	-	S	S	O <sup>2</sup>	S

<sup>1</sup> Traction Control and 16" alloy wheels - combined option only.

<sup>2</sup> 17" alloy wheels, sports-tuned suspension and sports strut tower brace - combined option only.



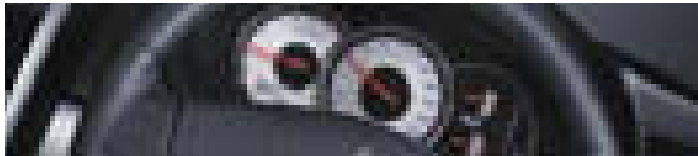
## EXTERIOR

### WHEELS

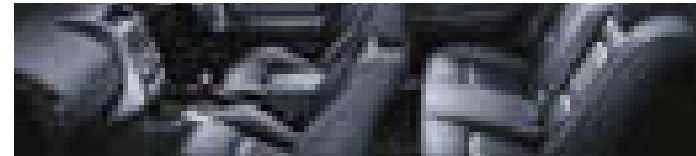
	380 ES	380 SX	380 VRX	380 LX	380 GT
16" x 6.5" steel wheels, full wheel cover					
215/60R 16 95H Goodyear Ducaro GA tyres	S	-	-	-	-
16" x 6.5" 6-spoke alloy wheels					
215/60R 16 95H Goodyear Ducaro GA tyres	O <sup>1</sup>	-	-	S	-
17" x 7.0" 6-spoke alloy wheels					
215/55R 17 93V Dunlop SP Sport 230 tyres	-	S	-	O <sup>2</sup>	-
17" x 7.0" 8-spoke alloy wheels					
215/55R 17 93V Dunlop SP Sport 230 tyres	-	-	S	-	S
16" x 6.5" steel spare wheel					
215/60R 16 95H Goodyear Ducaro GA tyre	S	S	S	S	S
Matching alloy spare wheel matching tyre	A	A	A	A	A

### EXTERIOR STYLING

	380 ES	380 SX	380 VRX	380 LX	380 GT
Body-coloured bumpers	S	S	S	S	S
Sports front bumper with integrated air dam	-	S	S	-	S
Sports rear bumper with integrated air dam and dark silver insert	-	S	S	-	-
Sports rear bumper with integrated air dam with colour key insert	-	-	-	-	S
Multi parabola headlamps with chrome bezel and amber indicator lens	S	S	-	-	-
Multi parabola headlamps with chrome bezel and clear indicator lens	-	-	-	S	-
Multi parabola headlamps with dark silver bezel and amber indicator lens	-	-	S	-	S
Rear combination lamp with red lens	S	S	-	S	-
Sports style rear combination lamp, dark silver with clear lens	-	-	S	-	S
Front fog lamps - colour key luxury style	A	-	-	S	-
Front fog lamps - black	A	-	-	-	-
Front fog lamps - black sports style	-	S	S	-	S
High mount stop lamp - boot lid mounted	S	S	-	S	-
High mount stop lamp - rear spoiler mounted	-	-	S	-	S
Radiator grille - luxury style with chrome fins	S	-	-	S	-
Radiator grille - black sports style mesh	-	S	S	-	S
Under grille - black	S	-	-	-	-
Under grille - colour key with black fins	-	-	-	S	-
Under grille - black sports style mesh	-	S	S	-	S
Body-coloured door mirrors	S	S	S	S	S
Body-coloured door handles	S	S	S	S	S
Chrome and body-colour side mouldings	-	-	-	S	S
Boot lid - chrome moulding	-	-	-	S	-
Colour keyed lip style rear spoiler	A	A	S	A	S
Black exhaust tip (round)	S	-	-	-	-
Chrome exhaust tip (round)	A	-	-	S	-
Chrome exhaust tip (oval sporty style)	-	S	S	-	S



380 ES	380 SX	380 VRX	380 LX	380 GT
--------	--------	---------	--------	--------



380 ES	380 SX	380 VRX	380 LX	380 GT
--------	--------	---------	--------	--------

## INTERIOR

### AUDIO

AM/FM radio, MP3 compatible single-disc in-dash CD player	S	-	-	-	-
Premium AM/FM radio, MP3 compatible 6-disc in-dash CD changer	-	S	S	S	S
Satellite navigation system† including:	A	A	A	A	A
- AM/FM radio					
- MP3 compatible single in-dash CD player					
- DVD player					
Glass antenna	S	S	S	S	S
Number of speakers	6	8	8	8	8
Steering wheel remote controls:	S	S	S	S	S
- source change (radio/CD)					
- volume up and down					
- scan up and down (track and station)					
- presets 1 to 6					

### INTERIOR STYLING

Leather-wrapped steering wheel	-	S	S	S	S
Handbrake lever with leather cover with chrome button	-	S	S	S	S
Leather gearshift knob	-	S	S	S	S
Gearshift surround with metallic paint finish	S	-	-	-	-
Gearshift surround with metallic paint finish and chrome	-	S	S	S	S
Trim accents with metallic finish	S	-	-	-	-
Trim accents with cherry maple finish	-	-	-	S	-
Trim accents with technical mesh print finish	-	S	S	-	-
Trim accents with slate mahogany finish	-	-	-	-	S
Door trim - cloth	S	S	-	O <sup>3</sup>	-
Door trim - leather-look	-	-	S	S	S
Inside door handle with metallic paint finish	S	S	S	S	S
Air vent controls with chrome accent	S	S	S	S	S
Instrument meter					
- black with painted rings, white letters, with 'ice-blue' LED illumination	S	-	-	-	-
Luxury instrument meter					
- dual tone gloss and matt black with chrome rings, white letters, with 'ice-blue' LED illumination	-	-	-	S	S
Sports instrument meter					
- dark silver with chrome rings, black letters, with 'ice-blue' LED illumination	-	S	S	-	-
- 'Sports Mode' indicator for automatic transmission	S	S	S	S	S
Boot lid trim	-	-	-	S	S

### SAFETY

RISE body construction	S	S	S	S	S
Breakaway pedal system (clutch/brake/accelerator)	S	S	S	S	S
Energy absorbing headlining and pillar trims	S	S	S	S	S
Driver SRS airbag in steering wheel	S	S	S	S	S
Front passenger SRS airbag	S	S	S	S	S
Driver and front passenger side SRS airbags	S	S	S	S	S
Driver and front passenger seatbelt with pre-tensioners and force limiters	S	S	S	S	S
Rear seat lap/sash seatbelt for all positions	S	S	S	S	S
Rear park assist	A	A	A	A	S
Emergency door unlock - front and side impact	S	S	S	S	S
Child proof rear door locks	S	S	S	S	S
Child restraint anchor points	3	3	3	3	3
Rest reminder - programmable (30mins to 4 hours)	S	S	S	S	S
Electric chromatic mirror (auto-dimming)	-	-	S	S	S
Prismatic rear view mirror	S	S	-	-	-

### SEATING

Driver seat - 4-way power (with manual slide, recline and lumbar)	S	-	-	-	-
Driver seat - 6-way power (with manual recline and lumbar)	-	S	S	-	-
Driver seat - 10-way power with 3 memory settings	-	-	-	S	S
Passenger seat - 6-way power	-	-	-	S	S
Passenger seat - manual slide and recline	S	S	S	-	-
Passenger seat - manual lumbar	-	-	-	S	-
Sports seats	-	S	S	-	S
Seat fabric - woven geometric with technical woven insert	S	-	-	-	-
Seat fabric - mesh knit with high tech woven insert	-	S	-	-	-
Seat fabric - soft touch knit with woven elegance insert	-	-	-	O <sup>3</sup>	-
Leather seats - natural grain leather	-	-	-	S	-
Leather seats - natural grain leather with geometric embossed leather insert	-	-	S	-	S
Height adjustable driver and passenger front seat head restraint	S	S	S	S	S
Integrated rear seat headrests	S	S	S	S	S
Height adjustable front seatbelt shoulder anchors	S	S	S	S	S
Boot through with folding boot access divider	S	S	S	S	S
Fold down rear centre armrest with cupholders	S	S	S	S	S

### COMFORT

Automatic climate control air conditioning with outlets for rear seat passengers	S	S	S	S	S
Power windows front and rear with time delay, one-touch down function on driver window	S	S	S	S	S
Cruise control	S	S	S	S	S
Steering wheel remote controls	S	S	S	S	S
Rear seat centre armrest with boot access	S	S	S	S	S
Side window demisters in dash	S	S	S	S	S
Electric sunroof with slide and tilt	-	O	O	O	O
EZ-KOOL® tinted side and rear glass	S	S	S	S	S

† Where fitted the multi-function display screen is replaced with the 380 digital clock display.

<sup>3</sup> Cloth door trim and 6-way powered passenger seat - combined option only.





	380 ES	380 SX	380 VRX	380 LX	380 GT
--	--------	--------	---------	--------	--------

#### CONVENIENCE

High technology 4.9" TFT screen featuring:

- Start sequence with concept image
- Audio information
- Outside temperature
- Heating and air conditioning information
- Door ajar warning image

Customisable features:

- Door opening display
- Headlamp auto shut-off
- Interior dome lamp shut-off
- Headlamp light shut-off
- Speed sensitive wipers
- Keyless entry system
- Door ajar warning buzzer

10-function trip computer, including:

- Average speed
- Speed alarm
- Instant fuel consumption
- Average fuel consumption
- Total fuel used
- Range to empty
- Travel time
- Total distance travelled
- Rest reminder
- Service reminder

Mobile phone hands-free system with Bluetooth® connectivity

Power remote control door mirrors

Front map lamps and room lamp

Interior light activation on key removal

Driver and passenger sunvisor with passenger vanity mirror

Driver and passenger sunvisor

with extension and with illuminated vanity mirror

Rear seat passenger assist grip with coat hook (x2)

Tilt adjustable steering column

Electric boot lid release

Electric fuel filler door release

Accessory socket in lower console

Second accessory socket in centre console box

Variable instrument lighting dimmer

Convenience lamp in boot

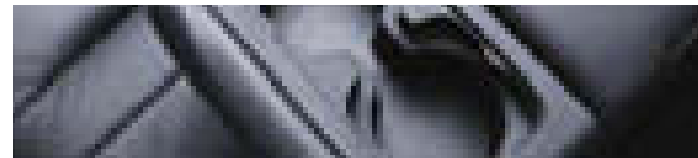
Convenience lamp glovebox

Service reminder - appears 500km before service is due

Diamond Roadside Assist - 5 Years<sup>^</sup>

Diamond Premium Roadside Assist - 5 Years<sup>^</sup>

-	S	S	S	S
-	S	S	S	S
S	S	S	S	S
A	A	A	A	S
S	S	S	S	S
S	S	S	S	S
S	S	S	S	S
S	S	-	-	-
-	-	S	S	S
S	S	S	S	S
S	S	S	S	S
S	S	S	S	S
S	S	S	S	S
S	S	S	S	S
S	S	S	S	S
S	S	S	S	S
S	S	S	S	S
S	S	S	S	-
-	-	-	-	S



	380 ES	380 SX	380 VRX	380 LX	380 GT
--	--------	--------	---------	--------	--------

#### SECURITY

Radio wave keyless entry featuring panic alarm,

with central door locking including the fuel filler door

Two stage door unlocking - first press opens driver's door only

Automatic relocking

Cabin illumination for safe entry

Alarm - works on bonnet, boot and doors

Anti-theft encrypted immobilisation with VIN check

Delayed headlamps off - programmable timer

Door lock in driver's door only

Steering lock

Flashing security lamp

#### STORAGE

Full size front door pocket

Cup holder in console (x2)

Cup holder in rear armrest (x2)

Glovebox with lamp

Coin tray

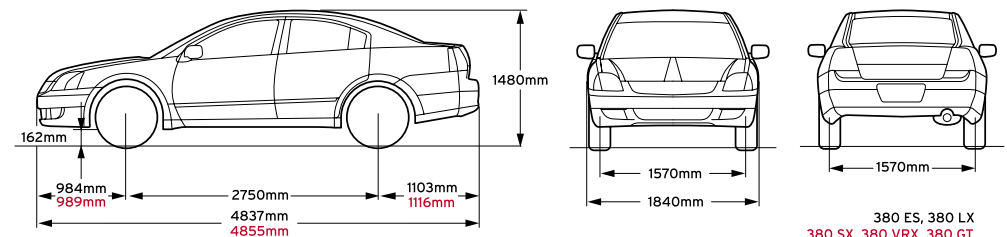
Sunglasses holder (overhead console)

Driver and passenger seat back pocket

S	S	S	S	S
S	S	S	S	S
S	S	S	S	S
S	S	S	S	S
S	S	S	S	S
S	S	S	S	S
S	S	S	S	S
S	S	S	S	S
S	S	S	S	S
S	S	S	S	S
S	S	S	S	S
S	S	S	S	S
S	S	S	S	S
S	S	S	S	S
S	S	S	S	S

S : standard O : optional A : dealer fitted accessory - : not available

## 380 DIMENSIONS



<sup>^</sup> Service conditions apply.

## EXTERIOR COLOURS

- 1 Mawson
- 2 Platinum (M)
- 3 Vision (M)
- 4 Stealth
- 5 Storm (M)
- 6 Molten (P)
- 7 Adrenaline (M)
- 8 Electro (M)
- 9 Blue Steel (P)



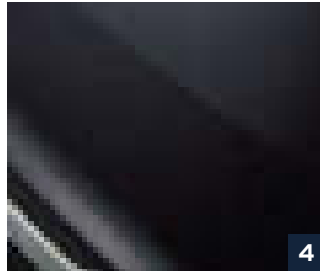
1



2



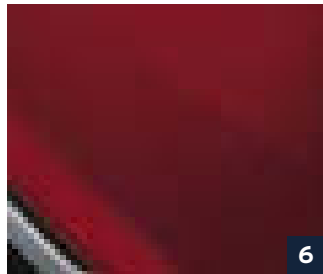
3



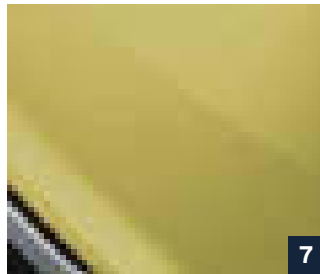
4



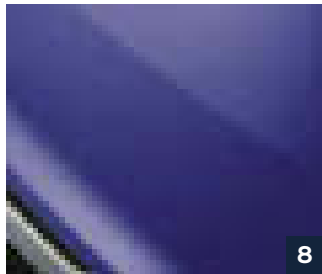
5



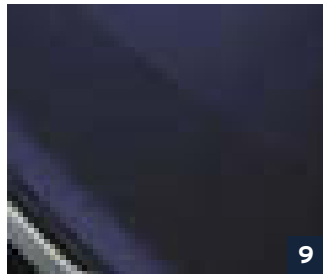
6



7



8



9

## INTERIOR TRIM

- 1 380 ES
- 2 380 SX
- 3 380 LX Leather
- 4 380 LX Fabric (Optional)
- 5 380 VRX/GT Leather



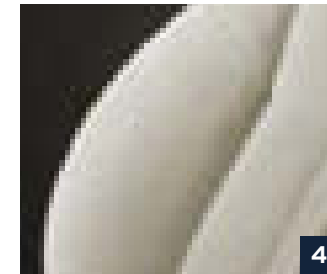
1



2



3



4



5

## WHEELS

- 1 380 ES 16" Standard
- 2 380 SX 17" Alloy
- 3 380 LX 16" Alloy
- 4 380 VRX/GT 17" Alloy



1



2



3

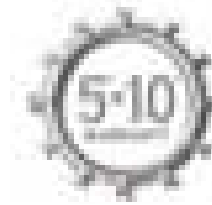


4

## EXTERIOR COLOURS

	380 ES	380 SX	380 VRX	380 LX	380 GT
Mawson	✓	✓	✓	✓	✓
Platinum (M)	✓	✓	✓	✓	✓
Vision (M)	✓			✓	
Stealth	✓	✓	✓	✓	✓
Storm (M)				✓	✓
Molten (P)	✓	✓	✓		✓
Adrenaline (M)		✓	✓		
Electro (M)		✓	✓		
Blue Steel (P)	✓			✓	✓

(M): Metallic (P): Pearlescent



Your Mitsubishi vehicle is manufactured using the latest automotive engineering techniques and the most advanced methods of quality control to provide you with many years of motoring enjoyment.

#### VEHICLE WARRANTY

Mitsubishi Motors Australia Limited offers a 5 year/130,000km\* New Vehicle Warranty, a 10 year/160,000km\* Powertrain Warranty† and a 5 year Perforation Corrosion Warranty on all Mitsubishi cars and light commercial vehicles.

#### ACCESSORIES WARRANTY

Mitsubishi Motors Australia is committed to complete customer satisfaction. Therefore, when Genuine Mitsubishi Accessories are fitted to your new vehicle at time of delivery, they are covered by the Mitsubishi 3 year/130,000km\* Warranty. When they are fitted after purchase of your new vehicle they are covered for the remainder of the warranty or for 12 months/20,000km\*. In the case of Diamond Spectrum Accessories, the Warranty is 12 months/20,000km\*.

### Diamond Finance

Take the burden out of financing your new Mitsubishi vehicle with our competitive, reassuring and completely flexible range of finance products developed by Mitsubishi Motors Australia Limited and St. George Motor Finance Limited.

### Diamond Road Side Assist – 5 Years<sup>^</sup>

Peace of mind is guaranteed anywhere in Australia, 24 hours a day, 365 days a year with our fast, comprehensive, flexible roadside service offering assistance, repairs, towing and storage. Our Premium Road Side Assist clients also enjoy the added benefits of accommodation, medical and transport facilities.

### Diamond Leasing

Our tailored fleet leasing services offer innovative, highly competitive features such as card purchasing, roadside assistance, specialist maintenance services, accident and claims management, optional insurance and more.

### Diamond Insurance

With the sound backing of Swann Insurance and Mitsubishi Motors Australia Limited, Mitsubishi owners can choose between vehicle and personal protection solutions including motor vehicle, gap cover and loan protection insurance as well as a range of tailored warranty policies.



**1300 13 12 11**

#### CUSTOMER RELATIONS

Please contact Mitsubishi Motors Australia Customer Assistance Centre on 1300 13 12 11 for the location of your nearest Mitsubishi Dealer.

Always consult your authorised Mitsubishi Dealer for the latest details on specifications, options, prices, availability and conditions on New Vehicle Warranty. All product illustrations and specifications referred to herein are correct at the time of publication approval. Subject to any applicable Federal, State or Territory Laws or ordinances, which may apply from time to time, Mitsubishi Motors Australia Limited reserves the right, without notice, or obligation, to discontinue or make changes to designs, specifications, colours and materials of the options and products referred to herein at any time without incurring any liability to any purchaser thereof. © Mitsubishi Motors Australia Limited. ABN 53 007 870 395. 3800406

\*Whichever occurs first. †Non-transferable. ^Service conditions apply.



**MITSUBISHI  
MOTORS**

engineered to excite