



Audi

TT
Roadster



The second generation of the Audi TT Roadster is ready to go. Its characteristic style and powerful vehicle lines lie at the heart of its unique design. It radiates exuberant self-confidence from its athletic side view to its muscular rear. A real sports car.



Purism in its most beautiful form. Functional design meets timeless aesthetics. Short overhangs at the front and rear, twin end pipes and the wide track make it immediately obvious that the new Audi TT Roadster is the perfect epitome of unrestrained driving enjoyment. Optional extras include the fully automatic hood and an electrically extendable anti-buffet screen – feel the wind in your hair in just 12 seconds. The fully automatic hood is retracted all the way, no tarpaulin is needed. This also makes hood handling a pure pleasure.





The interior continues the pure design feel. The voice of the TT shoulder line, the round air vents, the sports leather steering wheel with a flat base. Be bowled over by the design of the tried and tested ergonomics. Clear instruments. A practical through-loading facility is available on request for sporting activities. Clear shapes, clear statements. Nothing to distract from the absolutely essential.



The Audi Space Frame ASF® with its innovative combination of aluminium and steel materials is the perfect embodiment of more driving dynamics, more drive stability, better acceleration. Pure driving enjoyment – the 2.0 l four-cylinder with turbocharger and FSI®-technology: 147 kW, 280 Nm at 1800–5000 rpm, with S tronic 0 to 100 km/h in 6.5 seconds, a top speed of 237 km/h. Maximum enjoyment from driving thanks to increased agility – the 3.2 l-V6 engine with 184 kW, 320 Nm at 2500–3000 rpm. When fitted with S tronic, this engine takes the car from 0 to 100 km/h in 5.9 seconds and reaches a top speed of 250 km/h (governed).

¹ The fuel consumption and CO₂ emissions figures can be found in the Technical Data section on page 36.

Cloth and leather trim



Fine Nappa leather, black JN

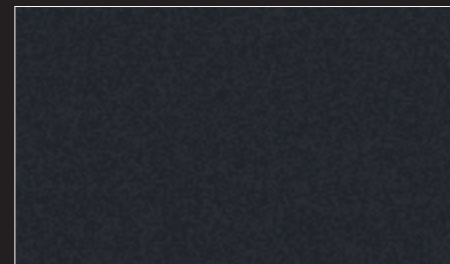


Fine Nappa leather, ice blue TG/TY



Leather, Impulse madras brown TZ

Decorative inlays



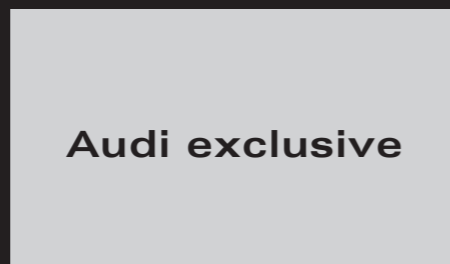
Micrometallic grey



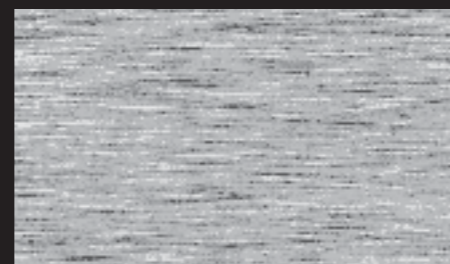
Fine Nappa leather, light grey TH



Fine Nappa leather, magma red TR



Audi exclusive
Audi exclusive leather trim.
From quattro GmbH



Aluminium Laser¹



Fine Nappa leather, mineral grey TF



Fine Nappa leather, luxor beige TB

Wheels/tyres



Cast aluminium wheels in 10-spoke star styling, size 7.5 J x 16 with 225/55 R 16 tyres (standard for 2.0 TFSI)



Cast aluminium wheels in 10-spoke styling, size 9 J x 18 with 245/40 R 18 tyres



Cast aluminium winter wheels in 10-spoke star styling, size 7 J x 16, with 225/55 R 17 tyres 16 H, permissible top speed 210 km/h (only for 2.0 TFSI)



Cast aluminium wheels in 5-spoke styling, size 9 J x 18 with 245/40 R 18 tyres



Cast aluminium wheels in 5-arm trapezoidal styling, size 8 J x 17 with 225/50 R 17 tyres (only for 2.0 TFSI)



Cast aluminium wheels in 10-spoke styling, size 9 J x 18 with 245/40 R 18 tyres, polished, two-tone



Lightweight forged aluminium winter wheels in 7-Y-spoke styling, size 7 J x 17 with 225/50 R 17 H tyres, permissible top speed 210 km/h



Cast aluminium wheels in 20-spoke styling, two-part, size 9 J x 19 with 255/35 R 19 tyres



Lightweight forged aluminium wheels in 7-Y-spoke styling, size 8.5 J x 17 with 245/45 R 17 tyres (standard for 3.2 quattro)



Cast aluminium wheels in 7-arm styling, size 9 J x 18 with 245/40 R 18 tyres



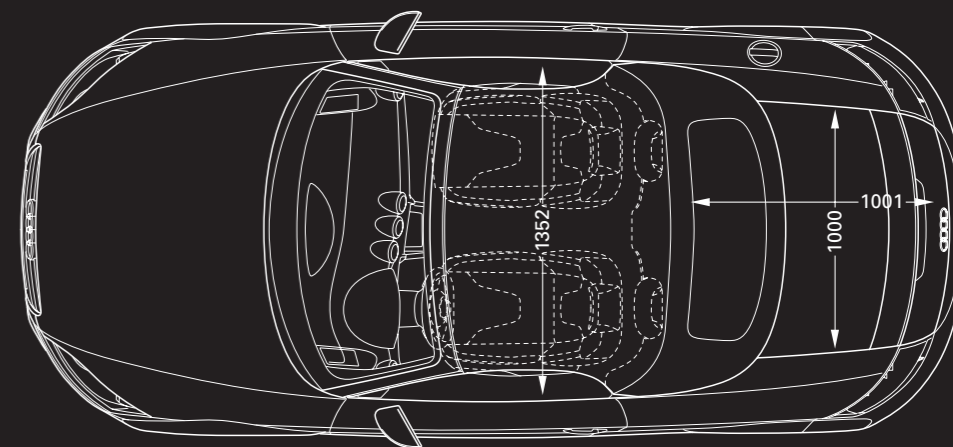
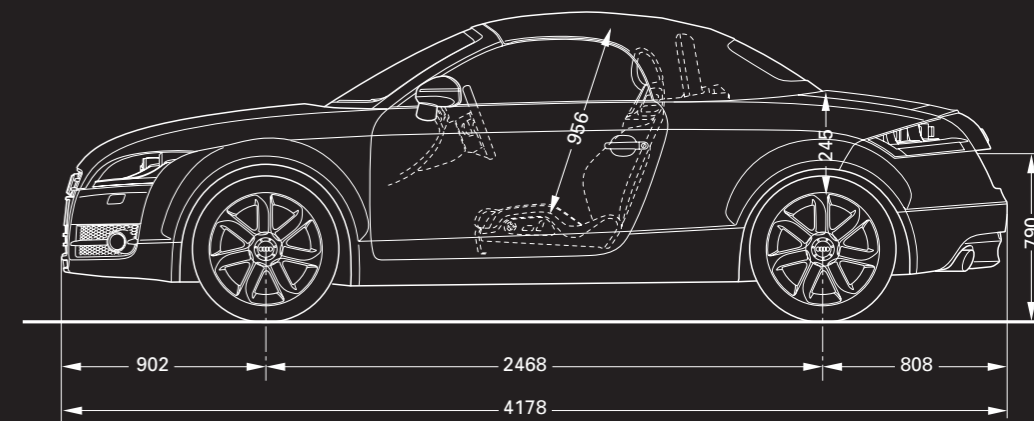
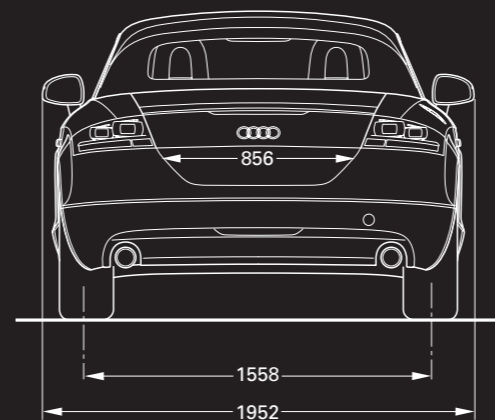
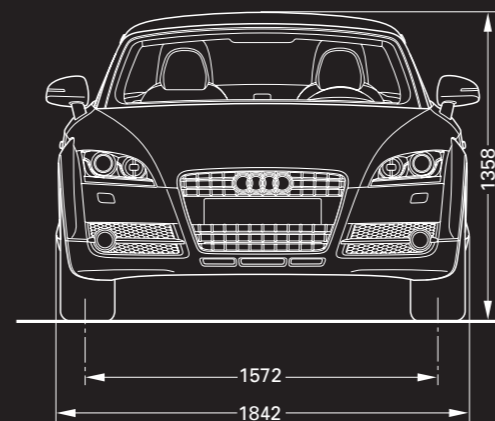
Cast aluminium winter wheels in 10-spoke styling, size 9 J x 18 with 245/40 R 18 V tyres, permissible top speed 240 km/h



Cast aluminium wheels in 7-double-spoke styling, size 9 J x 19 with 255/35 R 19 tyres

Model	TT Roadster 2.0 TFSI	TT Roadster 2.0 TFSI S tronic	TT Roadster 3.2 quattro	TT Roadster 3.2 quattro S tronic	
Engine type	4-cylinder in-line petrol engine with direct fuel injection and exhaust turbocharging	4-cylinder in-line petrol engine with direct fuel injection and exhaust turbocharging	V 6-cylinder petrol engine with intake manifold fuel injection	V 6-cylinder petrol engine with intake manifold fuel injection	
Displacement in cm³ (valves per cylinder)	1984 (4)	1984 (4)	3189 (4)	3189 (4)	
Max. output¹ in kW at rpm	147/5100–6000	147/5100–6000	184/6300	184/6300	
Max. torque in Nm at rpm	280/1800–5000	280/1800–5000	320/2500–3000	320/2500–3000	
Power transmission/wheels					
Drive layout	Front wheel drive	Front wheel drive	quattro® permanent all-wheel drive	quattro® permanent all-wheel drive	
Transmission	6-speed manual transmission, fully synchronised	6-speed S tronic with electro-hydraulic operation	6-speed manual transmission, fully synchronised	6-speed S tronic with electro-hydraulic operation	
Wheels	Cast aluminium wheels, 7.5 J x 16	Cast aluminium wheels, 7.5 J x 16	Lightweight forged aluminium wheels, 8.5 J x 17	Lightweight forged aluminium wheels, 8.5 J x 17	
Tyres	225/55 R 16	225/55 R 16	245/45 R 17	245/45 R 17	
Weights/capacities					
Unladen weight² in kg	1295	1315	1470	1490	
Gross vehicle weight in kg	1615	1635	1790	1810	
Fuel tank in l	55	55	60	60	
Performance/consumption³					
Top speed in km/h	237	237	250 ((regulated))	250 (regulated)	
Acceleration 0-100 km/h in s	6.7	6.5	6.1	5.9	
Fuel grade	SuperPlus unleaded 98 RON ⁴	SuperPlus unleaded 98 RON ⁴	SuperPlus unleaded 98 RON ⁴	SuperPlus unleaded 98 ROZ ⁴	
Fuel consumption⁵ in l/100 km					
	urban	10.7	10.8	14.8	13.0
	extra-urban	6.2	6.1	7.8	7.4
	combined	7.8	7.8	10.4	9.5
CO₂ emissions⁵ in g/km					
	urban	255	257	354	310
	extra-urban	148	145	187	177
	combined	186	186	250	227
Exhaust standard	EU4	EU4	EU4	EU4	

Audi TT Roadster



Dimensions in millimetres.

Dimensions were measured at unladen weight.

Luggage compartment volume 250 l (measured in accordance with the VDA method using 200 x 100 x 50 mm blocks).

Turning circle approx. 10.9 m.