

Vorsprung durch Technik [www.audi.com](http://www.audi.com)

The models and equipment versions illustrated and described in this brochure and some of the services listed are not available in all countries. Some of the cars illustrated are equipped with optional equipment for which an extra charge is made. The details concerning the delivery specifications, appearance, performance, dimensions and weights, fuel consumption and running costs of the vehicle were correct to the best of our knowledge at the time of going to press. Deviations from the colours and shapes shown in the illustrations may occur. No liability is accepted for errors and printing errors. The right to introduce modifications is reserved. Not to be reproduced, including in part, without the written approval of AUDI AG.

This brochure is printed on paper made from pulp bleached without the use of chlorine.

AUDI AG  
85045 Ingolstadt  
[www.audi.com](http://www.audi.com)  
Valid from October 2008

Printed in Germany  
833/1204.55.18

Audi A5



Audi A5





There is nothing more exciting than a premiere. Especially in a new car. The first sight of it. The first time you accelerate, the first corner, the first long journey. For this special feeling, there is a very special car: the Audi A5. For new ways, new thoughts, new ideas. Get in. And experience every journey like it was the first.





The first coupé  
shaped by  
**determination.**

The Audi A5 plays with the proportions of classic coupés. The sloping lines at the front are suggestive of determination, whilst the flat roof and elegant sweep of the roof line convey a sporty elegance. The rear with its wide bumper and crisp separation edge completes the car's striking appearance.





## The first coupé to set new focal points.

A very special heart beats inside the Audi A5 Coupé. All its engines are noted for their high torque delivery, swift acceleration, low fuel consumption figures and agreeable smooth-running performance.

The Audi A5 2.7 TDI V6<sup>1</sup> with front-wheel drive delivers a sporty 140 kW to the road. And the 6-cylinder A5 3.0 TDI quattro<sup>1</sup> boasts a power output of 176 kW and a peak torque of 500 Nm. It swiftly and efficiently takes you from 0 to 100 km/h in just 5.9 seconds. The result is spontaneous response whenever you need it – and undreamt-of driving enjoyment.

<sup>1</sup>Fuel consumption and CO<sub>2</sub> emissions figures can be found on page 84 onwards.







The braking system in the Audi A5 benefits from a well-balanced, almost 50:50 split axle load distribution. The specially designed large brake discs reduce any deterioration in braking effect during heavy use, the phenomenon known as "fading". The brake pedal provides for excellent measured braking and consequently more control during braking manoeuvres.

The brake light warns following traffic of an emergency braking situation by automatically activating the hazard warning lights. The slimline front lighting units can be fitted as an option with long-life Xenon plus headlights and LED daytime driving lights, delivering a pleasant, bright beam of light. The optional adaptive light features a dynamic cornering light that lights up the bend or corner before you enter it.

The optional Audi side assist and Audi lane assist systems increase your safety even more. Audi side assist checks whether there is a vehicle in your "blindspot" when you are changing lanes and where necessary warns you by means of a flashing LED display in the exterior mirror. If you do not indicate but the vehicle moves sideways, or if you leave a marked lane, Audi lane assist will warn you by briefly but perceptibly vibrating the steering wheel.







Sports seats in Sprint cloth/leather with S line embossed logo and silver seams.



Gear lever knob in perforated leather.

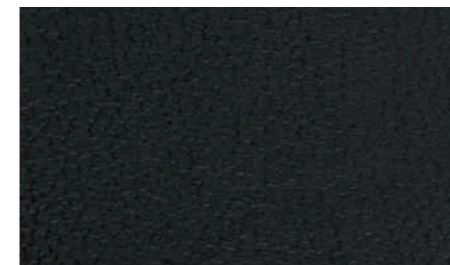


Sports seats in Leather/perforated Alcantara and silver seams.

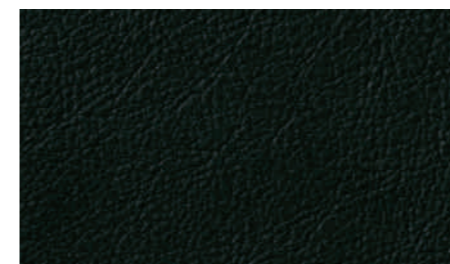


S line multifunction leather sports steering wheel, 3-spoke design.

### Seat covers<sup>1</sup>

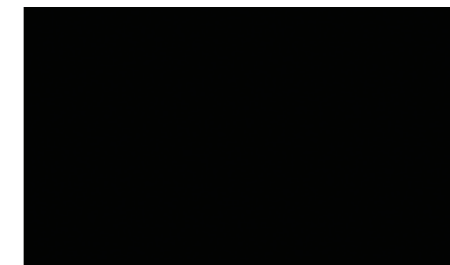


Milano leather, black



Valcona leather, black

### Inlays<sup>1</sup>



Piano finish black



Vavona wood assam grey

## S line sports package

Cast aluminium wheels in 5-spoke design, optionally also in 10-spoke design, size 8.5 J x 18 with 245/40 R 18 tyres; also optional: cast aluminium wheels, 20-spoke two-piece design, or 5-segment-spoke design, size 9 J x 19 with 255/35 R 19 tyres; or: cast aluminium wheels, 7-double-spoke design, size 9 J x 20 with 265/30 R 20 tyres

S line sports suspension from quattro GmbH with more dynamic suspension tuning and vehicle lowered by 10 mm

S line logos on the front wings

Door sill trims with S line logo

Interior, dashboard and headlining in black with a choice of silver or black seams on cloth/leather or leather/perforated Alcantara seat covers, leather sports steering wheel, gear lever gaiter and floor mats

S line inlays in Matt brushed aluminium; optional: in Piano finish black or Vavona wood assam grey

Sports seats with electric lumbar support

**The following options are available for seat covers, steering wheels and exterior paints:**

Seat covers in Sprint cloth/leather or leather/perforated Alcantara or Milano leather or Valcona leather, in each case in black and with S line embossed logo in the front-seat backrests

S line leather sports steering wheel, 3-spoke design or S line multifunction leather sports steering wheel, 3-spoke design, with or without gearshift function, in each case in black leather and with S line emblem. Note: if ordering Audi lane assist, this can only be combined with the respective leather steering wheel in 4-spoke design without S line emblem

Exterior paints in all the standard colours, plus the additional special colours Monza Silver, metallic and Misano Red, pearl effect

## S line exterior package

Front and rear bumpers, side radiator grilles and diffuser insert in a distinctive sporty design

Body-coloured door sill strips

Web incorporated into centre of bottom edge of front bumper and diffuser insert painted in Platinum Grey

Door sill trims with S line logo

S line logos on the front wings

Chromed exhaust tailpipe surrounds (4-cylinder models)

<sup>1</sup>Additional variants to the illustrations shown on the previous page.





**Lightweight forged aluminium wheels,  
6-arm design,**  
size 7.5 J x 17 with 225/50 R 17 tyres



**Cast aluminium wheels,  
10-spoke V design,**  
size 8,5 J x 18 with 245/40 R 18 tyres



**Lightweight forged aluminium winter  
wheels,  
6-arm design,**  
size 7.5 J x 17 with 225/50 R 17 tyres;  
can be fitted with snow chains;  
also available with run-flat tyres,  
size 7.5 J x 17 with 225/50 R 17 tyres



**Audi exclusive cast aluminium wheels,  
5-spoke design,**  
size 8.5 J x 18 with 245/40 R 18 tyres.  
From quattro GmbH



**Cast aluminium wheels,  
7-arm design,**  
size 7.5 J x 17 with 225/50 R 17 tyres



**Cast aluminium wheels,  
5-arm Y design,**  
size 8.5 J x 19 with 255/35 R 19 tyres



**Cast aluminium winter wheels,  
10-spoke V design,**  
size 8.5 J x 18 with 245/40 R 18 tyres,  
cannot be fitted with snow chains



**Audi exclusive cast aluminium wheels,  
10-spoke design,**  
size 8.5 J x 18 with 245/40 R 18 tyres.  
From quattro GmbH



**Cast aluminium wheels,  
6-spoke parabola design,**  
size 8 J x 17 with 245/45 R 17 tyres;  
also available with run-flat tyres,  
size 8 J x 17 with 245/45 R 17 tyres



**Cast aluminium wheels,  
7-arm parabola design,**  
size 7.5 J x 17 with 225/50 R 17 tyres



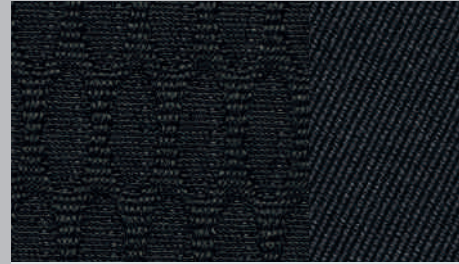
**Audi exclusive cast aluminium wheels,  
5-segment spoke design,**  
size 9 J x 19 with 255/35 R 19 tyres.  
From quattro GmbH

Please find out from your local Audi partner which equipment is standard and what optional equipment is available in your country.



## Equipment

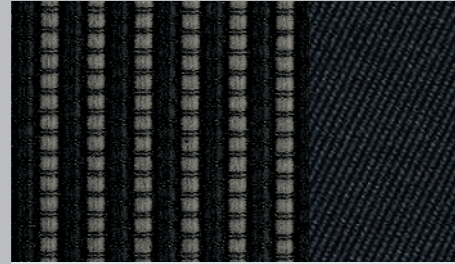
### Standard seats



Arcade cloth, black

GD

### Sports seats



Empore cloth, black

GD



Valcona leather, star silver/stone blue

GL/GG



Alcantara/Leather, black  
(Also available as S sports seats)

GD

### Standard and sports seats



Milano leather, black  
(also available as S sports seat or climate-controlled comfort seat)

GD



Milano leather, linen beige  
(also available as climate-controlled comfort seat)

GF



Valcona leather, black

GD



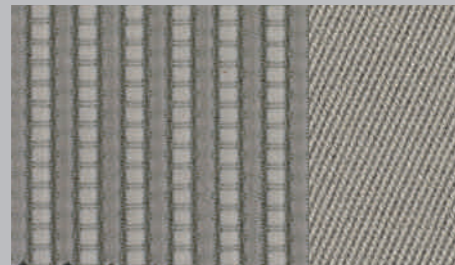
Valcona leather, linen beige

GF



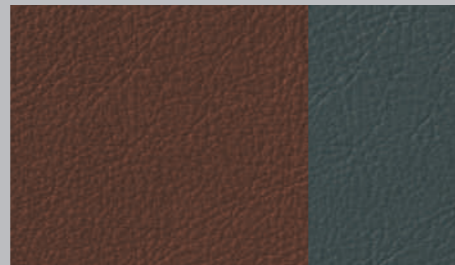
Arcade cloth, pale grey

GE



Empore cloth, pale grey

GE



Valcona leather, cinnamon/stone blue

GH



Alcantara/Leather, pale grey

GE



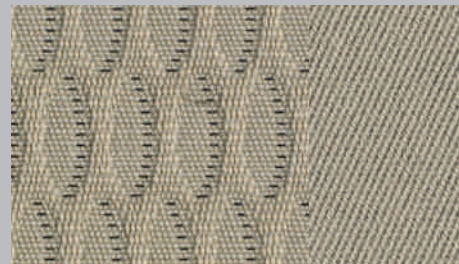
Milano leather, pale grey  
(also available as S sports seat or climate-controlled comfort seat)

GE



Valcona leather, pale grey

GE



Arcade cloth, linen beige

GF



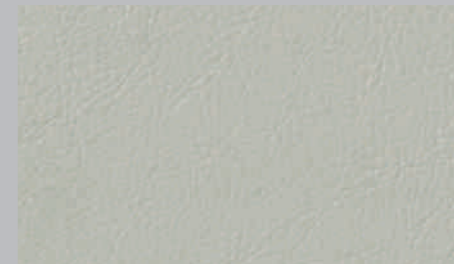
Alcantara/Leather, star silver

GK



Milano leather, cinnamon  
(also available as climate-controlled comfort seat)

GJ



Valcona leather, star silver

GK

## Audi exclusive

Audi exclusive leather upholstery and trim.  
From quattro GmbH

Please find out from your local Audi partner which equipment is standard and what optional equipment is available in your country.





A5 in Meteor Grey pearl effect with cast aluminium wheels, 6-spoke parabola design.  
Upholstery and trim: standard seats in cinnamon Milano leather, black dashboard, Walnut brown inlays, navigation system with DVD including MMI and B&O Sound System.



A5 in Topaz Blue pearl effect with cast aluminium wheels, 10-spoke V design.  
Upholstery and trim: sports seats in star silver Valcona leather, dashboard in black/graphite grey, Aluminium hologram inlays, symphony radio with B&O Sound System.





## Technical data

Model	A5 2.0 TFSI	A5 2.0 TFSI	A5 2.0 TFSI quattro	A5 3.2 FSI
<b>Engine type</b>	Inline 4-cylinder petrol engine with direct fuel injection, exhaust gas turbocharging and Audi valvelift system	Inline 4-cylinder petrol engine with direct fuel injection, exhaust gas turbocharging and Audi valvelift system	Inline 4-cylinder petrol engine with direct fuel injection, exhaust gas turbocharging and Audi valvelift system	V6 petrol engine with direct fuel injection and Audi valvelift system
<b>Displacement in cc (valves per cylinder)</b>	1984 (4)	1984 (4)	1984 (4)	3197 (4)
<b>Max. output<sup>1</sup> in kW at rpm</b>	132/4000–6000	155/4300–6000	155/4300–6000	195/6500
<b>Max. torque in Nm at rpm</b>	320/1500–3900	350/1500–4200	350/1500–4200	330/3000–5000

### Power transmission/wheels

Type of drive	Front-wheel drive	Front-wheel drive	quattro® permanent all-wheel drive	Front-wheel drive
Transmission	6-speed manual transmission [multitronic®]	6-speed manual transmission [multitronic®]	6-speed manual transmission [S tronic®]	[multitronic®]
Wheels	Cast aluminium wheels 7.5 J x 17	Cast aluminium wheels 7.5 J x 17	Cast aluminium wheels 7.5 J x 17	Cast aluminium wheels 7.5 J x 17
Tyres	225/50 R 17	225/50 R 17	225/50 R 17	225/50 R 17

### Weights/capacities

Unladen weight <sup>2</sup> in kg	1420	[1460]	1420	[1465]	1490	[1550]	[1500]	
Gross vehicle weight in kg	1920	[1960]	1920	[1965]	1990	[2050]	[2000]	
Roof load/trailer nose weight in kg	75/80		75/80		75/80		75/80	
Trailer load limit <sup>3</sup> in kg	unbraked	740	[750]	740	[750]	750	[750]	[750]
	12% gradient	1500	[1500]	1500	[1500]	1700	[1700]	[1700]
	8% gradient	1700	[1700]	1700	[1700]	1900	[1900]	[1800]
Fuel tank capacity, approx. in l	65		65		64		65	

### Performance/consumption<sup>4</sup>

Top speed in km/h	236	[226]	250 <sup>7</sup>	[240]	246	[245]	[250] <sup>7</sup>	
Acceleration 0–100 km/h in s	7.8	[8.1]	6.9	[6.9]	6.5	[6.5]	[6.6]	
Fuel grade	Super unleaded 95 RON <sup>5</sup>		Super unleaded 95 RON <sup>5</sup>		Super unleaded 95 RON <sup>5</sup>		Super unleaded 95 RON <sup>5</sup>	
Fuel consumption <sup>6</sup> in l/100 km	urban	9.0	[9.4]	9.0	[9.4]	10.0	[9.3]	[11.2]
	extra-urban	5.2	[5.7]	5.2	[5.7]	5.9	[6.3]	[6.4]
	combined	6.6	[7.1]	6.6	[7.1]	7.4	[7.4]	[8.2]
CO <sub>2</sub> emissions <sup>6</sup> in g/km	urban	209	[221]	209	[221]	233	[216]	[267]
	extra-urban	121	[134]	121	[134]	137	[146]	[152]
	combined	154	[167]	154	[167]	172	[172]	[194]
Emissions standard	EU 5		EU 5		EU 5		EU 4	

Model	A5 3.2 FSI quattro	A5 2.7 TDI with diesel particulate filter	A5 3.0 TDI quattro with diesel particulate filter
<b>Engine type</b>	V6 petrol engine with direct fuel injection and Audi valvelift system	V6 diesel engine with common rail injection system and exhaust gas turbo-charging	V6 diesel engine with common rail injection system and exhaust gas turbo-charging
<b>Displacement in cc (valves per cylinder)</b>	3197 (4)	2698 (4)	2967 (4)
<b>Max. output<sup>1</sup> in kW at rpm</b>	195/6500	140/3500-4400	176/4000-4400
<b>Max. torque in Nm at rpm</b>	330/3000-5000	400/1400-3250	500/1500-3000

### Power transmission/wheels

Type of drive	quattro® permanent all-wheel drive	Front-wheel drive	quattro® permanent all-wheel drive
Transmission	6-speed manual transmission [tiptronic]	6-speed manual transmission [multitronic®]	6-speed manual transmission [multitronic®]
Wheels	Cast aluminium wheels 7.5 J x 17	Cast aluminium wheels 7.5 J x 17	Cast aluminium wheels 7.5 J x 17
Tyres	225/50 R 17	225/50 R 17	225/50 R 17

### Weights/capacities

Unladen weight <sup>2</sup> in kg	1540	[1575]	1550	[1575]	1620	[1660]	
Gross vehicle weight in kg	2040	[2075]	2050	[2075]	2120	[2160]	
Roof load/trailer nose weight in kg	75/80		75/80		75/80		
Trailer load limit <sup>3</sup> in kg	unbraked	750	[750]	750	[750]	750	[750]
	12% gradient	1900	[1900]	1600	[1700]	1900	[1900]
	8% gradient	2100	[2100]	1800	[1900]	2100	[2100]
Fuel tank capacity, approx. in l	64		65		64		

### Performance/consumption<sup>4</sup>

Top speed in km/h	250 <sup>7</sup>	[250] <sup>7</sup>	239	[232]	250 <sup>7</sup>	[250] <sup>7</sup>	
Acceleration 0–100 km/h in s	6.1	[6.4]	7.9	[7.6]	5.9	[6.1]	
Fuel grade	Super unleaded 95 RON <sup>5</sup>		Diesel in accordance with EN 590		Diesel in accordance with EN 590		
Fuel consumption <sup>6</sup> in l/100 km	urban	13.0	[13.0]	8.1	[7.9]	8.8	[8.8]
	extra-urban	6.6	[6.7]	4.8	[5.5]	5.3	[5.9]
	combined	8.9	[9.0]	6.0	[6.4]	6.6	[6.9]
CO <sub>2</sub> emissions <sup>6</sup> in g/km	urban	311	[311]	211	[204]	231	[231]
	extra-urban	157	[160]	128	[145]	139	[154]
	combined	213	[215]	159	[167]	173	[182]
Emissions standard	EU 4		EU 5		EU 5		

<sup>[ ]</sup> Data in square brackets are for multitronic®or tiptronic. Explanatory notes 1 to 7 on page 86.