

MAZDA CX-7



mazda



zoom-zoom



Mazda CX-7 crosses the practicality you need with the excitement you want. An SUV with standout looks and a sporty drive. Choose from two or all-wheel drive, efficient petrol or diesel engines, even turbocharged thrills. Mazda CX-7. The SUV loaded with Zoom-Zoom enjoyment. ◀



[WATCH THE CX-7 OVERVIEW FOOTAGE >](#)





CX-7 Luxury Sports

WE SEE THE SUV DIFFERENTLY.

Its sports car inspired looks prove an SUV needn't be shaped by practicality. From every angle Mazda CX-7 takes a fresh approach to design. Its steeply raked windscreen, arresting side-window profile and muscular shoulders create a powerful impression. On all models striking alloy wheels fill wheel arches that accentuate CX-7's confident stance.

The distinctive five-point grille is framed by elegantly integrated fog-lamps on Classic Sports and above.

Chrome finish door handles add sparkle to the Luxury Sports model. Naturally this attention to detail is matched to superb finishes and build quality throughout. Mazda CX-7 gives you the practicality you need, but wraps it in a style that's practically impossible to ignore.



A lot to admire.

Rear roof spoiler adds a sporting edge. Tail-lamp clusters set off streamlined rear design. Chrome-tipped exhausts a polished sign of CX-7's performance.





WATCH THE DESIGN VIDEO >



CX-7 Luxury Sports



CX-7 Luxury Sports

Crafted for comfort.

CX7 cossets with convenience and craftsmanship. Luxury Sports indulges you with leather trim* and piano black details.



◀ In tune with you.

Bluetooth® hands-free phone operation features on Luxury Sports and Diesel Sports, as does premium 242 watt BOSE® audio system.

SETTLE IN AND ENJOY THE SHOW.

Premium materials and quality create a special atmosphere, enhanced by crystal clear sports instrumentation. The leather-wrapped sports steering wheel houses switches for the cruise control and audio system. Luxury Sports and Diesel Sports add buttons linking you to satellite navigation and Bluetooth® technology, allowing hands-free phone use and MP3 player connectivity. In Classic and Classic Sports your listening pleasure is ensured by an MP3 compatible 6-disc, in-dash CD player. Luxury Sports and Diesel Sports give you the superb

performance of a 242 watt BOSE® audio system, with digital amplifier and nine speakers. And you'll enjoy all this from the comfort of Mazda CX-7's superbly supportive seats. Choose Luxury Sports or Diesel Sports and you'll also be indulged by leather trim,* front seat heating and a power-adjustable driver's seat.

*Leather interior includes some Maztex material on selected high impact surfaces.



◀ **Have a great trip.**
Satellite navigation via 4.1 inch LCD screen makes finding your way easy in Luxury Sports and Diesel Sports.

IT'S ALL SO EASY.

Remote central locking lets you unlock the driver's door, or all doors, with the touch of a button. Behind the wheel you've got a commanding view of the road. Mazda CX-7's clever interior design accommodates your every need. Handy storage spaces abound, from

the centre armrest console that opens to reveal generous storage space, to custom-designed compartments for mobile phones and coins. The rear hatch gives you easy access to an area large enough to hold three golf bags sideways, while 60:40 split rear seats fold virtually flat to allow room for longer items. With the seats upright there's plenty of room for five adults to enjoy the ride. Whatever you're doing, Mazda CX-7 makes it seem easy.



▲ **Goes flat out to help you.**
Fold either or both 60:40 split rear seats to create all the room you need.



◀ **Bags of room.**
Tailgate lifts high to give you unobstructed access to large load area.



[WATCH THE TV AD >](#)



CX-7 Luxury Sports



CX-7 Classic

CX-7 CLASSIC. THE JOURNEY STARTS HERE.

Mazda CX-7 excitement begins with the Classic. Striking style inside and out combines with a sporty drive that will have you smiling. Its economical 2.5 litre four-cylinder petrol engine has 120kW of power and 205Nm of torque on tap. Its performance is heightened by a responsive 5-speed Activematic transmission, which offers smooth automatic gear selection, or full manual control. Add front-wheel drive

linked to precisely-controlled suspension and you've got an agile SUV that feels more like a sports car. Mazda CX-7's interior treats you to a smooth, quiet ride. Mounted high up for easy viewing is the colour multi information display. Operated by steering wheel-mounted controls, it shows everything from audio system and trip computer information, to a maintenance monitor. You can even look behind you via the standard rear-view camera. An elegant centre console houses dials for the climate control air-conditioning, plus there are heating ducts for rear passengers and an auxiliary input for MP3 players. You'll enjoy every journey in the CX-7 Classic.

◀ Dial up the comfort.

Enjoy the perfect temperature, thanks to climate control air-conditioning in all models.

Classic style. ▶
Sporty 17 inch alloy wheels look great and wear large footprint tyres for superior safety and handling.



[READ FULL REVIEW >](#)



▲ At your command.

Stylish centre console houses MP3 compatible 6-disc, in-dash CD player. Multi information display shows helpful vehicle information and is also rear-view camera monitor.





CX-7 Luxury Sports



[WATCH THE AWD ANIMATION >](#)



Nice set of wheels.

Classic Sports rides on elegant 18 inch alloys.
Luxury Sports turns heads with bold 19 inch design.
Performance tyres enhance safety and handling.

CX-7 CLASSIC SPORTS & LUXURY SPORTS. ALL-WHEEL EXCITEMENT.

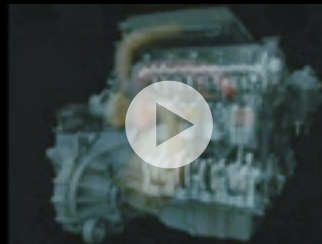
It starts with the four-cylinder Direct Injection Spark Ignition (DISI) engine. The advanced combination of intercooling, direct injection and turbocharging pumps out 175kW of power and 350Nm of torque from just 2.3 litres, yet keeps fuel consumption and emissions impressively low. And with lightning responses from direct injection and a lightweight turbocharger, the torque muscles in low in the rev range to give you

instantaneous acceleration. Power is delivered with stunning effect by sports-tuned suspension and Active Torque Split AWD. This advanced system monitors wheel speed and engine output, splitting torque delivery between 100:0 to 50:50 front to rear for optimum grip in all conditions. The quick-shifting 6-speed Activematic transmission offers automatic ease, but also lets you take manual control of the action. With Mazda CX-7 Classic Sports and Luxury Sports, it's all-wheel excitement, all the way.



Get some fresh air.

On Luxury Sports the standard power-sliding sunroof gives you open-air enjoyment.



[WATCH THE DISI ENGINE ANIMATION >](#)

Charged atmosphere.

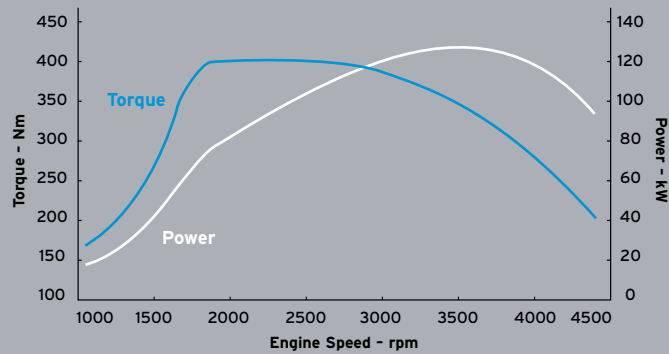
Blackout effect instrument cluster's amber-red and blue illumination heightens the excitement. Luxury Sports only.

Puts you in drive.

Activematic lets you snick through the gears manually, or have the smooth shifting done for you automatically.



CX-7 DIESEL SPORTS. FUEL ECONOMY THAT WILL THRILL YOU.



127kW of power and 400Nm of torque is impressive enough, but with fuel consumption of just 7.6 litres per 100km*, the numbers look even more amazing. Mazda CX-7 Diesel Sports' advanced 2.2 litre four-cylinder engine employs a Variable Geometry Turbocharger (VGT), which minimises lag to give you instant thrust. You'll enjoy this performance along with great fuel efficiency and impressive refinement, thanks to high-pressure common-rail fuel injection. A Selective Catalytic Reduction system helps keep emissions ultra-clean. The crisp-shifting 6-speed manual transmission combines with Active Torque Split AWD and sports handling to keep you fully involved in the drive. In so many ways, Mazda CX-7 Diesel Sports will thrill you.

*Combined fuel consumption: 7.6L/100km. Fuel consumption figure is based on ADR 81/02 test results.



[WATCH THE MZR CD ANIMATION >](#)





[WATCH THE ROAD TEST VIDEO >](#)

**PERFORMANCE
DIESEL**



CX-7 Diesel Sports



Highly visible.

Side mirror-mounted indicators make it easier for other road users to see you.



[WATCH MAIDAS ANIMATION >](#)

YOU'VE GOT THE BEST IN SAFETY ON BOARD.

You'll feel very well looked after in a Mazda CX-7.

Its extremely stiff body shell integrates the Mazda Advanced Impact Distribution and Absorption System (MAIDAS), which employs 'Triple H' construction to absorb and redirect impact energy away from the occupant cell. This impressive protection is boosted by front and side airbags for the driver and front passenger, plus curtain airbags front and rear. Front seats are equipped with seat belt reminders, pretensioners and load-limiters. All models feature Dynamic Stability Control (DSC) incorporating traction control as standard. This advanced system precisely manages engine output and braking to help

prevent skidding or loss of control in all conditions.

Large disc brakes all round are augmented by ABS with Electronic Brake-force Distribution and Emergency Brake Assist, giving you enhanced control under sudden braking. Even reversing is made safer, thanks to the inclusion of a rear-view camera as standard. Making your sense of security even greater is remote control locking and an engine immobiliser.



Reinforced confidence.

Rigid body shell integrates MAIDAS and six SRS airbags for high levels of occupant protection.

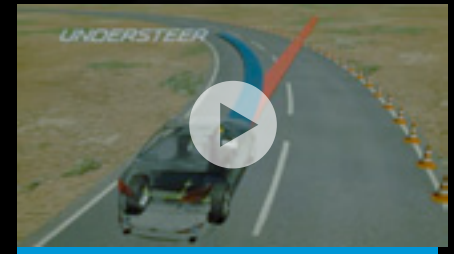
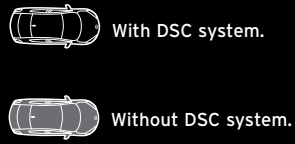
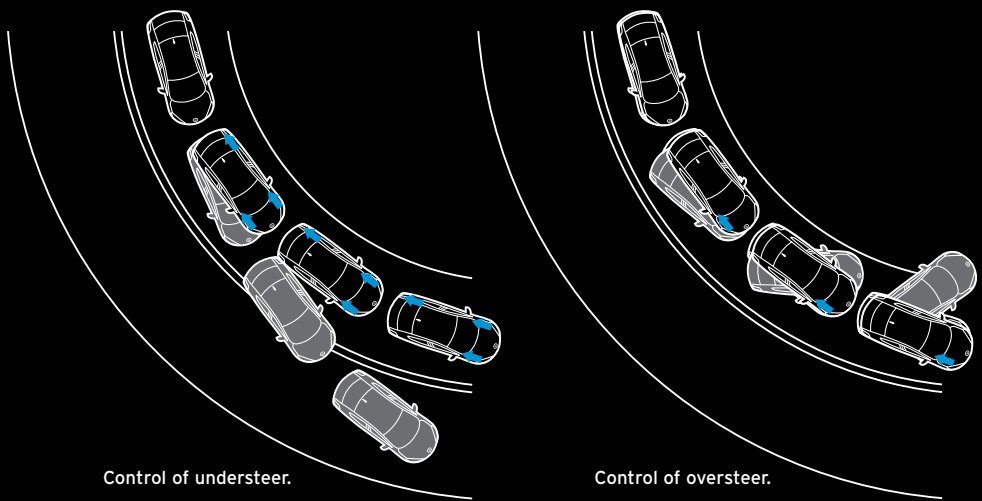


Mazda CX-7's impressive technology and resale value deserve the very best protection. With the Mazda Maintenance Program your car is cared for by factory-trained Mazda Technicians, equipped with one of the world's most advanced computer diagnostic systems. Mazda CX-7 also gives you the added reassurance of a 3-year, unlimited kilometre factory warranty. For more on Mazda warranties, go to mazda.com.au



Know what's behind you.

Simply select reverse and Mazda CX-7's rear-view camera automatically shows you what's out back.



[WATCH THE STABILITY CONTROL ANIMATION >](#)

Helps you stay on track. DSC enhances control in wet or slippery conditions. By managing the braking force and engine power delivered to individual wheels, it helps you maintain grip.

MAZDA CX-7 SPECIFICATIONS



mazda



CX-7 Luxury Sports

zoom-zoom

MAZDA CX-7 AT A GLANCE.



CX-7 Classic

SUV versatility meets superb refinement and driving dynamics. No matter what you're doing, you'll enjoy Zoom-Zoom driving pleasure.

- 2.5 litre in-line 4 cylinder 16 valve DOHC S-VT
- 120 kW @ 6,000 rpm and 205 Nm @ 2,000 rpm
- 62 litre fuel tank capacity
- 5-speed Activematic (auto) transmission
- 17 inch alloy wheels
- Exhaust extension (chrome)
- Power mirrors (body coloured)
- Power windows
- Rear spoiler
- Air-conditioning (climate control)
- Cruise control
- Headlamps auto on/off function
- Leather-wrapped steering wheel and gear shift knob
- Multi information display with: ambient temperature gauge, maintenance monitor and trip computer
- Seat trim: cloth
- Seats (front) with: height adjustment (driver) and seat back pocket (passenger)
- Seats (rear) with: 60/40 split fold backrest
- Tilt and telescopic adjustable steering wheel
- Wipers (front) 2-speed with variable intermittent function
- AM/FM tuner with CD player, in-dash 6-disc (MP3/WMA compatible) and 4 speakers
- Auxiliary input (3.5 mm MP3 player compatible)
- Steering wheel-mounted audio controls
- Airbags SRS: front (driver and passenger), side (front) and curtain (front and rear)
- Anti-lock Braking System (ABS)
- Dynamic Stability Control (DSC)
- Electronic Brake-force Distribution (EBD)
- Emergency Brake Assist (EBA)
- Reversing camera
- Traction Control System (TCS)
- Towing capacity (braked) 1,000 kg*5



CX-7 Classic Sports

Pack in even more excitement. Classic Sports adds turbocharged all-wheel drive performance and ramps up the style.

Classic Sports features additional to the Classic include:

- 2.3 litre Direct Injection Spark Ignition (DISI) turbocharged in-line 4 cylinder 16 valve DOHC
- 175 kW @ 5,000 rpm and 350 Nm @ 2,500 rpm
- 69 litre fuel tank capacity
- 6-speed Activematic (auto) transmission
- Active Torque Split (ATS)*2 All-Wheel Drive (AWD) system
- 18 inch alloy wheels
- Fog-lamps (front)
- Towing Capacity (braked) 1,600 kg*5



CX-7 Luxury Sports

Luxury Sports goes all out to make you feel good, with high performance matched to impressive levels of creature comfort.

Luxury Sports features additional to the Classic Sports include:

- 19 inch alloy wheels
- Door handles (chrome)
- Power mirrors (body coloured with heating function)
- Power-sliding and tilt glass sun-roof
- Blackout instrument cluster
- Multi information display with: Bluetooth® (hands-free compatible) and satellite navigation
- Panel trim (piano black)
- Seat trim: leather*4
- Seats (front) with: 8-way power adjustment (driver), heating function (driver and passenger), lumbar adjustment (driver) and 3-position memory function (driver)
- Bluetooth® audio (MP3 player compatible)
- Premium Bose® 240 watt amplifier and 9 speakers



CX-7 Diesel Sports

Loads of luxury plus the great fuel economy of turbo diesel. Diesel Sports gives you so many reasons to enjoy the drive.

Diesel Sports features additional to the Classic Sports include:

- 2.2 litre in-line 4 cylinder 16 valve DOHC intercooled turbo diesel
- 127 kW @ 3,500 rpm and 400 Nm @ 2,000 rpm
- 6-speed manual transmission
- Power mirrors (body coloured with heating function)
- Blackout instrument cluster
- Leather-wrapped handbrake handle
- Multi information display with: Bluetooth® (hands-free compatible) and satellite navigation
- Seat trim: leather*4
- Seats (front) with: 8-way power adjustment (driver), heating function (driver and passenger) and lumbar adjustment (driver)
- Bluetooth® audio (MP3 player compatible)
- Premium Bose® 240 watt amplifier and 9 speakers

SPECIFICATIONS.

		CX7 Classic	CX7 Classic Sports	CX7 Luxury Sports	CX7 Diesel Sports
Powertrain					
Engine type		2.5 litre in-line 4 cylinder 16 valve DOHC S-VT	2.3 litre Direct Injection Spark Ignition (DISI) turbocharged in-line 4 cylinder 16 valve DOHC	2.3 litre Direct Injection Spark Ignition (DISI) turbocharged in-line 4 cylinder 16 valve DOHC	2.2 litre in-line 4 cylinder 16 valve DOHC intercooled turbo diesel
Engine capacity		2,488 cc	2,261 cc	2,261 cc	2,184 cc
Bore and stroke		89.0 x 100.0 mm	87.5 x 94.0 mm	87.5 x 94.0 mm	86.0 x 94.0 mm
Compression ratio		9.7 : 1	9.5 : 1	9.5 : 1	16.3 : 1
Maximum power		120 kW @ 6,000 rpm	175 kW @ 5,000 rpm	175 kW @ 5,000 rpm	127 kW @ 3,500 rpm
Maximum torque		205 Nm @ 2,000 rpm	350 Nm @ 2,500 rpm	350 Nm @ 2,500 rpm	400 Nm @ 2,000 rpm
Throttle control		Electronic (drive-by-wire)	Electronic (drive-by-wire)	Electronic (drive-by-wire)	Electronic (drive-by-wire)
Fuel system		Electronic port fuel injection	Electronic direct injection	Electronic direct injection	Common-rail electronic direct injection
Fuel tank capacity		62 litres	69 litres	69 litres	69 litres
Recommended fuel		Unleaded or E10 (91RON or higher)	Premium unleaded (95RON or higher)	Premium unleaded (95RON or higher)	Diesel (ultra low sulphur)
Fuel consumption*1	combined	9.4 litres per 100 km	11.5 litres per 100 km	11.5 litres per 100 km	7.6 litres per 100 km
Emissions standard		Euro stage IV	Euro stage IV	Euro stage IV	Euro stage IV
Manual transmission		-	-	-	6-speed
Activematic (auto) transmission		5-speed	6-speed	6-speed	-
Gear ratio	1st	3.620	4.148	4.148	3.818
	2nd	1.925	2.370	2.370	2.045
	3rd	1.285	1.555	1.555	1.290
	4th	0.933	1.154	1.154	0.926
	5th	0.692	0.859	0.859	0.853
	6th	-	0.685	0.685	0.711
	reverse	3.405	3.393	3.393	4.139
	final drive	3.458	3.749	3.749	4.187 (1st - 4th) 3.526 (5th - 6th)
Chassis					
All-Wheel Drive (AWD) system		-	Active Torque Split (ATS)*2	Active Torque Split (ATS)*2	Active Torque Split (ATS)*2
Brake type	front	Ventilated disc	Ventilated disc	Ventilated disc	Ventilated disc
	rear	Ventilated disc	Ventilated disc	Ventilated disc	Ventilated disc
Brake diameter	front	296 mm	296 mm	296 mm	320 mm
	rear	302 mm	302 mm	302 mm	302 mm
Steering type		Hydraulic power assist steering	Hydraulic power assist steering	Hydraulic power assist steering	Electro hydraulic power assist steering
Suspension	front	MacPherson strut	MacPherson strut	MacPherson strut	MacPherson strut
	rear	Multi-link	Multi-link	Multi-link	Multi-link
Turning circle	kerb to kerb	11.4 m	11.4 m	11.4 m	11.4 m

For further information visit cx-7.com.au or Freecall 1800 034 411.

SPECIFICATIONS.

	CX7 Classic	CX7 Classic Sports	CX7 Luxury Sports	CX7 Diesel Sports
Tyre size	215/70R17 101H	235/60R18 103H	235/55R19 101H	235/60R18 103V
Wheel size	17 x 7.0 J	18 x 7.5 J	19 x 7.5 J	18 x 7.5 J
Wheel type	Alloy	Alloy	Alloy	Alloy
Wheel type (spare)	Temporary (185/80R17)	Temporary (185/80R17)	Temporary (185/80R17)	Temporary (185/80R17)
Exterior				
Door handles (chrome)	-	-	✓	-
Exhaust extensions (chrome)	✓	✓	✓	✓
Fog-lamps (front)	-	✓	✓	✓
Front and rear bumpers (body coloured)	✓	✓	✓	✓
Green-tinted windscreen, side and rear windows	✓	✓	✓	✓
Headlamps (halogen)	✓	✓	✓	✓
Metallic/Mica paint	✓	✓	✓	✓
Mudflaps (rear)	✓	✓	✓	✓
Power mirrors (body coloured)	✓	✓	-	-
Power mirrors (body coloured with heating function)	-	-	✓	✓
Power-sliding and tilt glass sun-roof	-	-	✓	-
Power windows	✓	✓	✓	✓
Rear centre roof mounted aerial	✓	✓	✓	✓
Rear spoiler	✓	✓	✓	✓
Roof rack mounting points	✓	✓	✓	✓
Interior				
Air-conditioning (climate control)	✓	✓	✓	✓
Blackout instrument cluster	-	-	✓	✓
Cargo area tie-down hooks	✓	✓	✓	✓
Centre armrest console	✓	✓	✓	✓
Critical function warning lights/chimes	✓	✓	✓	✓
Cruise control	✓	✓	✓	✓
Cupholders	✓	✓	✓	✓
Digital clock	✓	✓	✓	✓
Door map pockets (front)	✓	✓	✓	✓
Driver's left footrest	✓	✓	✓	✓
Headlamps auto on/off function	✓	✓	✓	✓
Heating ducts to second row passengers	✓	✓	✓	✓
Illuminated entry system with delayed fade	✓	✓	✓	✓
Instrument panel light dimmer	✓	✓	✓	✓
Interior illumination: cargo room lamp	✓	✓	✓	✓
ignition key surround	✓	✓	✓	✓
map reading spot lamps	✓	✓	✓	✓
power window switch (driver)	✓	✓	✓	✓
Interior release for fuel filler door	✓	✓	✓	✓

SPECIFICATIONS.

		CX7 Classic	CX7 Classic Sports	CX7 Luxury Sports	CX7 Diesel Sports
Leather-wrapped:	gear shift knob	✓	✓	✓	✓
	handbrake handle	-	-	-	✓
	steering wheel	✓	✓	✓	✓
Low fuel warning light	✓	✓	✓	✓	
Multi information display with:	ambient temperature gauge	✓	✓	✓	✓
	Bluetooth® (hands-free compatible)	-	-	✓	✓
	maintenance monitor	✓	✓	✓	✓
	satellite navigation	-	-	✓	✓
	trip computer*3	✓	✓	✓	✓
Panel trim (piano black)	-	-	✓	-	
Passenger assist grips (front and rear)	✓	✓	✓	✓	
Retractable cargo area cover	✓	✓	✓	✓	
Seat trim:	cloth	✓	✓	-	-
	leather*4	-	-	✓	✓
Seats (front) with:	3-position memory function (driver)	-	-	✓	-
	8-way power adjustment (driver)	-	-	✓	✓
	adjustable head restraints	✓	✓	✓	✓
	heating function (driver and passenger)	-	-	✓	✓
	height adjustment (driver)	✓	✓	✓	✓
	lumbar adjustment (driver)	-	-	✓	✓
	rake and slide adjustment	✓	✓	✓	✓
seat back pocket (passenger)	✓	✓	✓	✓	
Seats (rear) with:	60/40 split fold backrest	✓	✓	✓	✓
	adjustable head restraints	✓	✓	✓	✓
	centre fold down armrest	✓	✓	✓	✓
Tachometer and electronic odometer/tripmeter	✓	✓	✓	✓	
Tilt and telescopic adjustable steering wheel	✓	✓	✓	✓	
Vanity mirrors (front) with illumination	✓	✓	✓	✓	
Ventilation pollen filter	✓	✓	✓	✓	
Window demister (rear)	✓	✓	✓	✓	
Wipers (front) 2-speed with variable intermittent function	✓	✓	✓	✓	
Wiper (rear) with intermittent function	✓	✓	✓	✓	
Audio					
AM/FM tuner	✓	✓	✓	✓	
Auxiliary input (3.5 mm MP3 player compatible)	✓	✓	✓	✓	
Bluetooth® audio (MP3 player compatible)	-	-	✓	✓	
CD player, in-dash 6-disc (MP3/WMA compatible)	✓	✓	✓	✓	
Premium Bose® 240 watt amplifier and speakers	-	-	✓	✓	
Speakers, number of	4	4	9	9	
Steering wheel-mounted audio controls	✓	✓	✓	✓	

SPECIFICATIONS.

		CX7 Classic	CX7 Classic Sports	CX7 Luxury Sports	CX7 Diesel Sports
Safety					
Airbags SRS:	front (driver and passenger)	✓	✓	✓	✓
	side (front)	✓	✓	✓	✓
	curtain (front and rear)	✓	✓	✓	✓
Anti-lock Braking System (ABS)		✓	✓	✓	✓
Child restraint anchor points		✓	✓	✓	✓
Childproof rear door locks		✓	✓	✓	✓
Day/night rear vision mirror		✓	✓	✓	✓
'Dual stage' door unlocking function		✓	✓	✓	✓
Dynamic Stability Control (DSC)		✓	✓	✓	✓
Electronic Brake-force Distribution (EBD)		✓	✓	✓	✓
Emergency Brake Assist (EBA)		✓	✓	✓	✓
Engine immobiliser		✓	✓	✓	✓
High mount stop lamp		✓	✓	✓	✓
Intrusion-minimising brake pedal		✓	✓	✓	✓
Left-hand-side convex (wide angle) exterior mirror		✓	✓	✓	✓
One touch (up and down) power window (driver)		✓	✓	✓	✓
Remote central locking (2 transmitters)		✓	✓	✓	✓
Reversing camera		✓	✓	✓	✓
Seat-belt warning, audible and visual (front)		✓	✓	✓	✓
Seat-belts (front) with pretensioners, load-limiters and height adjustable shoulder anchorages		✓	✓	✓	✓
Seat-belts 3-point lap-sash (all seats)		✓	✓	✓	✓
Side impact door beams		✓	✓	✓	✓
Traction Control System (TCS)		✓	✓	✓	✓
'Triple H' safety construction with front and rear crumple zones		✓	✓	✓	✓
Dimensions					
Ground clearance	laden	147 mm	170 mm	170 mm	170 mm
Overall height		1,645 mm	1,645 mm	1,645 mm	1,645 mm
Overall length		4,693 mm	4,693 mm	4,693 mm	4,693 mm
Overall width		1,872 mm	1,872 mm	1,872 mm	1,872 mm
Track	front	1,627 mm	1,617 mm	1,617 mm	1,617 mm
	rear	1,622 mm	1,612 mm	1,612 mm	1,612 mm
Wheelbase		2,750 mm	2,750 mm	2,750 mm	2,750 mm
Cargo room	volume (VDA)	400 litres	400 litres	400 litres	400 litres
Kerb weight		1,589 kg	1,761 kg	1,798 kg	1,928 kg
Towing capacity*5	braked	1,000 kg	1,600 kg	1,600 kg	1,600 kg
	unbraked	750 kg	750 kg	750 kg	750 kg

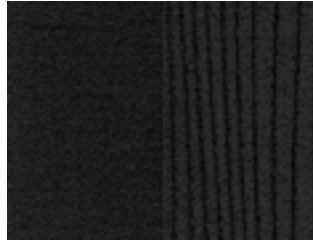
*1 Fuel consumption figures are based on ADR 81/02 test results. They are useful in comparing the fuel consumption of different vehicles. They may not be the fuel consumption achieved in practice. This will depend on traffic and road conditions and how the vehicle is driven. *2 Active Torque Split (ATS) AWD system automatically adjusts front/rear wheel torque distribution between 100:0 and 50:50. *3 Trip computer comprises: current and average fuel economy, fuel range and average speed.

*4 Leather interior includes some Maztex material on selected high impact surfaces. *5 Subject to State or Territory regulations.

MAZDA CX-7 COLOURS.

Interior

Classic and Classic Sports



■ Black Cloth

Luxury Sports and Diesel Sports



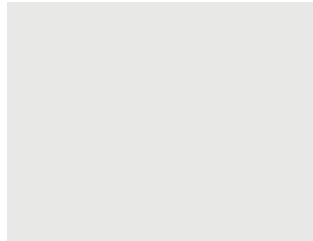
▲ Black Leather*4

Luxury Sports



● Sand Leather*4

Exterior



Crystal White Pearl ■ ▲
Mica



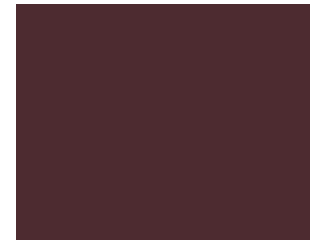
Aluminium ■ ▲
Metallic



■ ▲



Stormy Blue ■ ▲
Mica



Radiant Ebony ■ ▲ ●
Mica



Sparkling Black ■ ▲ ●
Mica

*1 Fuel consumption figures are based on ADR 81/02 test results. They are useful in comparing the fuel consumption of different vehicles. They may not be the fuel consumption achieved in practice. This will depend on traffic and road conditions and how the vehicle is driven. *2 Active Torque Split (ATS) AWD system automatically adjusts front/rear wheel torque distribution between 100:0 and 50:50. *3 Trip computer comprises: current and average fuel economy, fuel range and average speed. *4 Leather interior includes some Maztex material on selected high impact surfaces. *5 Subject to State or Territory regulations. All care is taken to ensure the accuracy of this brochure at the time of publication. Specifications, features and model availability may vary from State to State and may change without notice. Please refer to mazda.com.au or consult your Mazda Dealer prior to placing an order to ascertain current information on model availability, specifications, options, features and prices. Mazda Australia Pty Limited will not be liable for any loss arising from the information in this brochure, whether in negligence or otherwise. Mazda Australia Pty Limited ABN 78 004 690 804. 385 Ferntree Gully Road, Mt Waverley, Victoria 3149. CX7 is covered by a 3-year unlimited kilometre warranty and 6-year panel protection warranty. Please refer to your Dealer. Please check the compatibility of your Bluetooth® device (particularly your mobile phone) with the specific Mazda vehicle you intend to purchase as not all devices will operate correctly. Visit mazdahandsfree.com.au or consult your Mazda Dealer for further information. Due to the nature of the printing process, colours may vary from those shown in this brochure. Ask your Dealer to show you a product sample. Published October 2010. MAZ9684 126.026





MAZDA CX-7 ACCESSORIES



mazda



zoom-zoom

Mazda CX-7 combines standout style with a sporty drive. And fitting Mazda Genuine Accessories enhances an already rewarding ownership experience. They let you personalise your car and protect your investment. They also deliver superb design, quality, fit and safety, plus the backing of a Mazda warranty. Mazda Genuine Accessories let you add even more Zoom-Zoom.

Bonnet and headlight protectors. ▶

Guard against costly damage from stones and other debris.

Front parking sensors. ▶

Makes parking easier by sounding a warning tone when your front bumper nears an obstacle.



PERSONALISE & PROTECT YOUR CX-7



▲ Rear seat entertainment unit.

Keep passengers entertained with two high-quality 7-inch LCD screens with individual DVD players. Includes two wireless headphone sets.



▲ Ski/snowboard carrier.

Get geared up for the snow.



▲ Bike rack (wheel off).

Makes it easy to take your bike along for the ride.



▲ Scuff plates (set of 4).

Great protection and a great look for what is a high contact area of your CX-7.



▼ **Roof racks.**

Aerodynamically designed to reduce drag.
Load capacity of up to 75kg.

◀ **Slimline weathershields.**

Let fresh air in while keeping the weather out.

▶ **Reverse parking sensors.**

An audible warning tone helps prevent bumper damage by alerting the driver to obstacles.

▲ **Front mud flaps.**

Provide additional protection whilst adding to the sporty exterior look of your CX-7.

▲ **Tow bar.**

Designed specifically for Mazda CX-7, features a chrome plated tongue that complements the stylish exterior of the vehicle. Chrome tow ball sold separately.
Please refer to your Mazda Dealer for further information.



Cargo liner & rear bumper protector.

Protect your cargo area from messy cargo or pet hair. Cargo liner & rear bumper protector sold separately.



Floor mat set.

Treat your feet and protect your carpet with these high quality, durable floor mats.

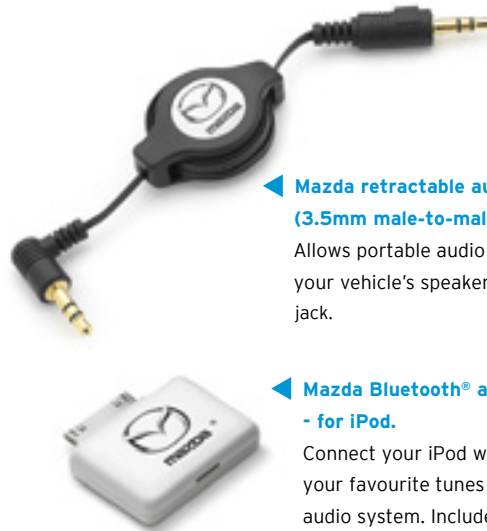


Cargo tray.

Durable with raised sides, this cargo tray offers maximum protection against dirt, scratches and spills.

Also available:

- ▶ Chrome tow ball cover.
- ▶ Kayak holder.
- ▶ Bike rack (wheel on).
- ▶ Boot lip protector.
- ▶ Cigarette lighter & ashtray.
- ▶ Bonnet protector (clear).
- ▶ Rear roof spoiler.



Mazda retractable audio cable (3.5mm male-to-male).

Allows portable audio devices to play via your vehicle's speakers, using the auxiliary jack.

Mazda Bluetooth® audio transmitter - for iPod.

Connect your iPod wirelessly and play your favourite tunes through the vehicle's audio system. Includes 12 volt power adaptor for charging your iPod.

Available on vehicles fitted with Mazda accessory Bluetooth® hands-free with A2DP or factory fit Bluetooth®.



High specification alarm.

Gives you added security and peace of mind.



iPod adaptor.

Control your iPod via steering wheel-mounted audio controls (where fitted), iPod charges as you listen.



Bluetooth® hands-free kit with A2DP.

Communicate safely and conveniently using the latest wireless technology and stream music from your Bluetooth® enabled mobile or MP3 player.

Hands-Free Profile (HFP) version 1.2. Please check mobile phone compatibility with your Mazda Dealer.

All care is taken to ensure the accuracy of this brochure at the time of publication. Any accessories or other equipment shown throughout the brochure are for illustration purposes only and do not come standard with the vehicle's purchase. Specifications, features and model availability may vary from State to State and may change without notice. Please refer to mazda.com.au or consult your Mazda Dealer prior to placing an order to ascertain current information on model availability, specifications, options, features and prices. Mazda Australia Pty Limited will not be liable for any loss arising from the information in this brochure, whether in negligence or otherwise. Mazda Australia Pty Limited ABN 78 004 690 804. 385 Ferntree Gully Road, Mount Waverley, Victoria 3149. CX-7 is covered by a 3-year unlimited kilometre warranty and 6-year panel protection warranty. Mazda Genuine Accessories fitted at the point of sale of a new Mazda passenger vehicle are covered under the Mazda 3-year/unlimited warranty. Mazda Genuine Accessories fitted after the sale of a new Mazda vehicle are covered by the Mazda 2-year or 40,000 kilometre warranty (whichever should occur first). iPod is a trademark of Apple Inc., registered in the U.S. and other countries. Please check the compatibility of your Bluetooth® device (particularly your mobile phone) with the specific Bluetooth® accessory you intend to purchase as not all devices will operate correctly. Consult your Mazda Dealer for further information.

