

*MAZDA RX-8*



mazda



zoom-zoom



It's a sports car like no other that combines coupe styling with four-door practicality. It not only takes corners with perfect balance, it can take three passengers along for an unforgettable ride. Add a revolutionary rotary engine that delivers exhilarating, turbine-like power and you have a truly unique sports car available in two forms. Mazda RX-8 Luxury and RX-8 GT. Both giving you Zoom-Zoom at its most thrilling. ◀





## *EXHILARATES ALL THE WAY TO 9000RPM.*

The uniquely thrilling RENESIS rotary engine powers the RX-8 experience. Free-revving, turbine smooth and highly responsive, this twin-rotor power plant delivers a heady 9000rpm of driving enjoyment. It's the result of over 40 years of research conducted by Mazda into rotary design. With a high-efficiency six-port intake system it not only optimises power output, but also fuel consumption. A newly-developed Electric Metering Oil Pump (E-MOP) delivers oil with maximum accuracy, enhancing lubrication and cold start up. In manual models it develops 170kW of power and 211Nm of torque, in the Activematic 158kW and 211Nm. These figures are

made even more impressive by the fact that the RENESIS rotary is far smaller and also much lighter than a piston engine. This not only heightens performance, but also allows for a front-midship layout that improves handling agility. A choice of equally sporty transmissions makes the most of the rotary engine's high performance. The 6-speed manual gives you fast, short-throw shifts between closely stacked ratios that deliver sharp acceleration. Choose the 6-speed Activematic and you can either cruise with automatic ease, or take full manual control through the steering wheel-mounted paddles or the responsive shifter. Direct Mode enables even greater control, letting you shift down via the paddles without changing from automatic to manual mode. Perfect for situations such as overtaking. No matter what gear you select, the excitement keeps coming all the way to 9000rpm. ◀



▲ **Select excitement.**

6-speed manual gives crisp, sporty shifts. 6-speed Activematic offers automatic ease or manual involvement. Its automatic mode adapts to your driving style, reducing fuel consumption and engine wear.



◀ **Click with it.**

Paddles on steering wheel make Activematic gear shifts even more involving.

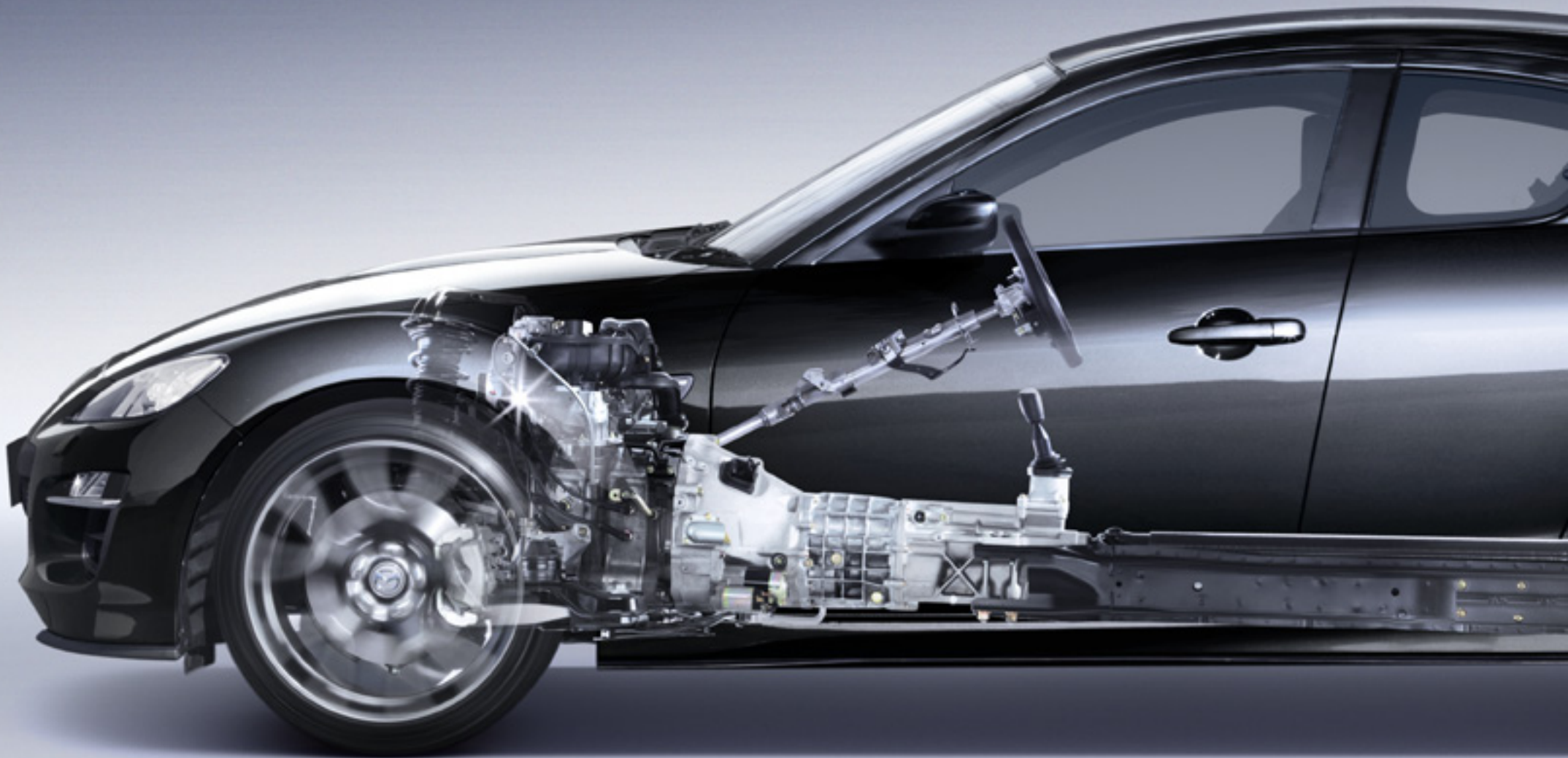


◀ Plenty to get revved up about.

Unique rotary engine delivers free-revving thrills. Manual models boast 170kW of power and 211Nm of torque. Activematic model has 158kW and 211Nm.



[WATCH THE RENESIS ROTARY ANIMATION >](#)





▲  
**Big on control.**

RX-8 Luxury has distinctive 18 inch alloy wheels for superior handling.

**Beautifully balanced.** ►

50:50 weight distribution, low centre of gravity and sports tuned suspension result in precise, controlled handling.



## *GRABS YOU AT THE FIRST TURN.*

The rotary engine that makes Mazda RX-8 so exhilarating to wind through the gears also makes it a thrill to thread along a winding road. The compact RENESIS power plant is mounted low down, behind the front wheels. This front-midship layout achieves perfect 50:50 weight balance and a low centre of gravity. So at every corner RX-8 turns in sharply, carves through with poise and leaves you smiling on exit. RX-8's precise handling also stems from an extremely stiff body. Exceptional torsional rigidity creates a strong platform for suspension that's been tuned to keep you fully in touch with the road. Up front,

lightweight aluminium double wishbones maximise steering and handling accuracy, while at the rear a multi-link design provides remarkable stability. But this sports car control doesn't come at the cost of harshness, as superb damping means progress is always refined. Your connection to the road is further enhanced by RX-8's steering. An electric power assist system results in informative feel, with far less kickback than a hydraulic set up. RX-8 has braking power in keeping with its performance, thanks to four large ventilated discs backed up by an Anti-lock Braking System (ABS). Adding to your confidence is Dynamic Stability Control (DSC). This system works to prevent skidding, by managing power transmission to the torque-sensing Limited Slip Differential (LSD), as well as braking effort to each wheel. RX-8's DSC has the option of partial or full disengagement, giving skilled drivers the ability to explore handling limits under controlled, racetrack conditions. ◀



◀ DSC does as you say.  
Handy button gives you full control over DSC function.



RX-8 Luxury





RX-8 Luxury



RX-8 Luxury

## *TAKE YOUR SEATS, THE FUN'S ABOUT TO START.*

While Mazda RX-8 treats the driver to an exhilarating experience, it's a sports car that actually welcomes passengers along too. Its unique Freestyle Door System removes the need for centre pillars. This enables RX-8's sporty coupe shape to provide four doors along with ample space for four adults. The amazing compactness of the RENESIS rotary engine also helps, by freeing up extra space in the cabin. To ensure maximum passenger enjoyment, special attention has been paid to the seat design. Front seats have been shaped to hold occupants securely during spirited driving, while also providing exceptional comfort. In the Luxury model, seats are trimmed in premium grade leather,\* the driver's seat having eight-way power adjustment. It also remembers the favourite seating positions of up to three drivers, applying them at the push of a button. A switch at the

back of the driver's seat also makes rear access easy, initiating a powered folding operation. The passenger seat folds forward at the simple pull of a lever. Rear passengers will also appreciate the slim design of the front head restraints, which allows an excellent view out and creates a greater sense of space. ◀

\*Leather interior includes some Maztex material on selected high impact surfaces.

**Gets a hold on you.** ▶  
Sporty front seats are shaped to hold you firmly yet provide superb levels of comfort.



### ▲ **Seat of power.**

RX-8 Luxury features eight-way power-adjustable driver's seat with three position memory. It also folds forward at the touch of a switch.



◀ Chase the sun.

RX-8 Luxury model is equipped with power-operated sun-roof.



RX-8 Luxury

## ALL SET FOR TAKE OFF.

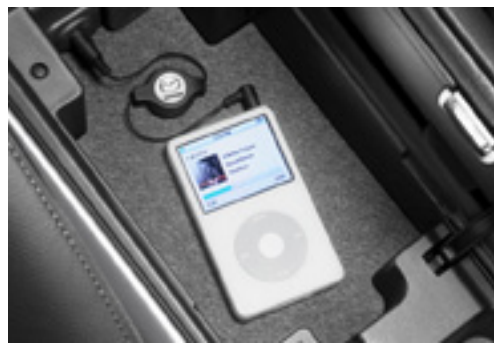
Mazda RX-8 puts you intimately in touch with the action. All controls fall to hand naturally and have the precision feel you'd expect of such a driver-orientated machine. The sporty, blackout style instrument cluster conveys vital information at a glance. Its central tachometer incorporates an illuminated red zone that moves with engine temperature, adding to your connection with the RENESIS engine's performance. The three-spoke steering wheel is trimmed in leather and gives reassuring grip during keen driving. Enthusiastic drivers will also appreciate the aluminium pedals, which are perfectly positioned for heel-and-toe gear changes. Throughout RX-8's interior, high levels of quality and craftsmanship create a sense of occasion. Standard climate control is equipped with a pollen filter and automatically maintains your preferred cabin temperature. The RX-8 GT features

a 6-disc in-dash CD player with six speakers, 100 watt output and auto-levelling that adjusts volume to vehicle speed. RX-8 Luxury adds a superb 300 watt Bose® amplifier with AudioPilot® noise compensation technology and nine speakers. Both models include an auxiliary jack for connecting portable audio players, such as an iPod. Whichever RX-8 you choose you'll enjoy high levels of convenience, as the cabin offers courtesy lights, integrated cup holders and a useful range of storage areas. The surprising practicality extends to the boot, where 290 litres\* of space can accommodate two golf bags or two full size suitcases. ◀

\*When the spare wheel isn't carried, a compact puncture kit allows full use of the 290 litre boot space.

### Tuned in. ▶

Auxiliary jack connects portable audio players. Recharge portable devices with 12V power outlet.



### ▲ Living space.

Boot offers generous load capacity.

Back seat console helps make life easy while boot through box makes way for large or awkward items.



## *A RED-BLOODED ROTARY. RX-8 GT.*



### **Hot wheels.**

Exclusive 19 inch forged alloys say performance loud and clear.

Mazda RX-8 GT gives a revolutionary sports car a harder edge and in the process, gives enthusiastic drivers even more to get excited about. Its specially designed front aero bumper, side skirts and rear spoiler combine for a more muscular look and improved aerodynamic performance. Exclusive 19 inch forged aluminium wheels add to the purposeful stance. Lightweight and highly rigid, they catch the eye with a rotor design and gunmetal grey finish. There's also plenty to get you going inside. Front seats have been specially developed by renowned manufacturer RECARO. They not only hold

occupants securely and with great comfort, they save 4.5 kilos each over the RX-8 Luxury's leather\* seats.

Featuring leather-clad bolsters complemented by premium silver/grey fabric, their sporty look is enhanced by red highlight stitching. These highlights extend to steering wheel, shift knob, handbrake handle and other key areas. The already sports-orientated suspension has been tuned with specifically designed Bilstein shock absorbers. As a result, Mazda RX-8 GT holds the road more tenaciously and corners even more eagerly, while the ride remains remarkably supple. In addition, the front suspension crossmember is filled with urethane foam, boosting lateral stiffness by around 20%. This gives you firmer steering with superb feel, while improving ride refinement at the same time. With RX-8 GT, rotary performance takes its most exhilarating form. ◀

\*Leather interior includes some Maztex material on selected high impact surfaces.

### **Cornering covered.**

Bilstein shock absorbers bring added precision to RX-8 GT's handling.





**Sporting highlights.** ▶

Red stitching marks out RX-8 GT cabin as a place for sports driving.



RX-8 GT



**Reinforced confidence.** ▶  
Lightweight Freestyle doors incorporate virtual B-pillars which are stronger than conventional door pillars. They work with the Mazda Advanced Impact Distribution and Absorption System (MAIDAS) to protect the passenger cell from impact energy.



RX-8 Luxury

## *ENJOY PERFORMANCE WITH CONFIDENCE.*

The secure handling, powerful braking and responsive steering of Mazda RX-8 inspire great confidence. As does the knowledge that the latest safety technology is looking out for you. The extremely strong body-shell integrates the Mazda Advanced Impact Distribution and Absorption System (MAIDAS). This boosts the protection offered by the highly rigid passenger cell, by absorbing and redirecting impact energy away from it. A total of six SRS airbags includes front, side and head-protecting curtain airbags. There's also the reassurance of DSC incorporating traction control, which works with the LSD and brakes to maintain grip in all conditions. ABS is standard, as is Electronic Brake-force Distribution (EBD), which adjusts braking force according to vehicle load, for optimum stopping efficiency. A collapsible brake pedal works to reduce leg injuries, by resisting rearward movement in an accident. Front seat belts feature pretensioners and load-limiters. Both rear seats have child seat fittings. RX-8 is strong on theft protection too, with remote control central locking and an engine immobiliser.

As a high performance vehicle, Mazda RX-8 deserves the best of care. Servicing through the Mazda Maintenance Program offers the advantage of factory-trained Service Technicians, equipped with one of the world's most advanced computer diagnostic systems. As well as maintaining your Mazda in A1 condition, you'll be protecting your investment in a vehicle that already has outstanding resale value. Like all Mazda passenger vehicles, Mazda RX-8 offers the reassurance of a 3-year, unlimited kilometre factory warranty. For more on Mazda car warranties go to [mazda.com.au](http://mazda.com.au) ◀



WATCH THE STABILITY CONTROL ANIMATION ▶



▲ **Airbags all around.**

Six SRS airbags provide high levels of passenger protection.



◀ **Safe in all areas.**

Shock Cone Aluminium Bonnet minimises the risk of pedestrian head injuries with shock-absorbing cones.

# *MAZDA RX-8 SPECIFICATIONS*



mazda



# MAZDA RX-8 AT A GLANCE.



## RX-8 Luxury

**Enjoy RX-8 performance and superb comfort at the same time. A range of luxurious appointments make the drive feel extra special.**

- Front-midship RENESIS - 2 rotors in-line, naturally aspirated, multi-sideport
- 170 kW @ 8,200 rpm and 211 Nm @ 5,500 rpm (man)
- 158 kW @ 7,500 rpm and 211 Nm @ 5,500 rpm (auto)
- 6-speed manual
- 6-speed Activematic (optional)
- 18 inch alloy wheels
- Fog-lamps (front)
- Headlamps (xenon low beam)
- Power-sliding glass sun-roof
- Air-conditioning (climate control)
- Aluminium pedals and footrest
- Cruise control
- Leather-wrapped steering wheel and gear shift knob
- Paddle shift gear control (auto only)
- Seat trim: leather\*2
- Seat (driver) with: 3-position memory function, 8-way power adjustment and power fold function
- AM/FM tuner with CD player, in-dash 6-disc (MP3 compatible)
- Auxiliary input (3.5 mm MP3 player compatible)
- Premium Bose® 300 watt amplifier and 9 speakers
- Airbags SRS: front, side and curtain
- Anti-lock Braking System (ABS)
- Dynamic Stability Control (DSC)
- Electronic Brake-force Distribution (EBD)
- Limited Slip Differential (LSD) torque-sensing
- Traction Control System (TCS)



## RX-8 GT

**If you like your sports cars leaner and meaner, RX-8 GT is for you. A host of styling and dynamic enhancements heighten the excitement.**

- Front-midship RENESIS - 2 rotors in-line, naturally aspirated, multi-sideport
- 170 kW @ 8,200 rpm and 211 Nm @ 5,500 rpm
- 6-speed manual
- 19 inch alloy wheels
- Bilstein shock absorbers
- Aero bumper (front), side skirts and rear spoiler
- Fog-lamps (front)
- Headlamps (xenon low beam)
- Air-conditioning (climate control)
- Aluminium pedals and footrest
- Cruise control
- Leather-wrapped steering wheel, gear shift knob and handbrake handle
- Seat trim: leather\*2/cloth
- Seat type (front): RECARO
- AM/FM tuner with CD player, in-dash 6-disc (MP3 compatible) and 6 speakers
- Auxiliary input (3.5 mm MP3 player compatible)
- Airbags SRS: front, side and curtain
- Anti-lock Braking System (ABS)
- Dynamic Stability Control (DSC)
- Electronic Brake-force Distribution (EBD)
- Limited Slip Differential (LSD) torque-sensing
- Traction Control System (TCS)

# SPECIFICATIONS.

		RX-8 Luxury	RX-8 GT
<b>Powertrain</b>			
Engine type		Front-midship RENESIS - 2 rotors in-line, naturally aspirated, multi-sideport	
Engine capacity		1,308 (654 x 2) cc	
Compression ratio		10.0 : 1	
Maximum power	man	170 kW @ 8,200 rpm	170 kW @ 8,200 rpm
	auto	158 kW @ 7,500 rpm	-
Maximum torque	man	211 Nm @ 5,500 rpm	211 Nm @ 5,500 rpm
	auto	211 Nm @ 5,500 rpm	-
Fuel system		Multipoint electronic fuel injection	
Fuel tank capacity		65 litres	
Recommended fuel		Premium unleaded (95RON or higher)	
Fuel consumption*1	man (combined)	12.9 litres per 100 km	12.9 litres per 100 km
	auto (combined)	12.1 litres per 100 km	-
Manual transmission		6-speed	6-speed
Activematic (auto) transmission		6-speed	-
Gear ratio - man/auto	1st	3.815/3.538	3.815/-
	2nd	2.260/2.060	2.260/-
	3rd	1.640/1.404	1.640/-
	4th	1.259/1.000	1.259/-
	5th	1.000/0.713	1.000/-
	6th	0.787/0.582	0.787/-
	reverse	3.603/3.168	3.603/-
	final drive	4.777/4.300	4.777/-
<b>Chassis</b>			
Brake type	front	Ventilated disc	
	rear	Ventilated disc	
Brake diameter	front	323 mm	
	rear	302 mm	
Shock absorbers	type	Standard	Bilstein
Steering type		Electric power assist steering	
Suspension	front	Double wishbone	
	rear	Multi-link	
Turning circle	kerb to kerb	10.6 m	
Tyre size		225/45 R18 91W	225/40 R19 89W
Weight distribution	front : rear	50:50	
Wheel size		18 x 8.0 J	19 x 8.0 J
Wheel type		Alloy	
Wheel type (spare)		Space-saver (T125/70 D17 98M)	

		RX-8 Luxury	RX-8 GT
<b>Exterior</b>			
Aerial printed into rear glass		✓	✓
Body kit comprising:	aero bumper (front)	-	✓
	rear spoiler	-	✓
	side skirts	-	✓
Fog-lamps (front)		✓	✓
Freestyle door system		✓	✓
Front and rear bumpers (body coloured)		✓	✓
Green-tinted windscreen, side and rear windows		✓	✓
Headlamps (xenon low beam) with auto-levelling and washer function		✓	✓
Power mirrors (body coloured and heated)		✓	✓
Power-sliding glass sun-roof		✓	-
Power windows with accessory delay function		✓	✓
Rear door flip-type quarter window		✓	✓
Suspension strut tower brace bar (front)		✓	✓
<b>Interior</b>			
Air-conditioning (climate control)		✓	✓
Aluminium pedals and footrest		✓	✓
Ambient temperature display		✓	✓
Blackout instrument cluster		✓	✓
Centre armrest consoles (front and rear)		✓	✓
Cigarette lighter and ashtray		✓	✓
Cruise control		✓	✓
Cupholders		✓	✓
Digital clock		✓	✓
Door ajar warning light		✓	✓
Door courtesy lamps (front)		✓	✓
Door map pockets (front)		✓	✓
Driver's left footrest		✓	✓
Glasses storage compartment		✓	✓
Glove box (lockable and illuminated)		✓	✓
Illuminated entry system with delayed fade		✓	✓
Instrument panel light dimmer		✓	✓
Interior illumination:	cargo room lamp	✓	✓
	ignition key surround	✓	✓
	map reading spot lamps	✓	✓
	power window switch (driver)	✓	✓
Interior release for fuel filler door and boot lid		✓	✓
Leather-wrapped:	gear shift knob	✓	✓
	handbrake handle	-	✓
	steering wheel	✓	✓

For further information visit [rx-8.com.au](http://rx-8.com.au) or Freecall 1800 034 411.

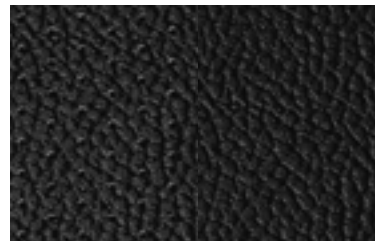
# SPECIFICATIONS.

	RX-8 Luxury	RX-8 GT
Lights-left-on audible warning	✓	✓
Low fuel warning light	✓	✓
Paddle shift gear control	auto only	-
Passenger assist grip (front)	✓	✓
Puncture repair kit and compressor	✓	✓
Seat trim:	leather*2	-
	leather*2/cloth	✓
Seat type (front):	RECARO	✓
Seats (front) with:	3-position memory function (driver)	✓
	8-way power adjustment (driver)	✓
	height adjustment (driver)	✓
	integral head restraints	✓
	lumbar adjustment (driver)	✓
	power fold function (driver)	✓
	quick fold function (passenger)	✓
	rake and slide adjustment	✓
	seat back pocket (passenger)	✓
Seats (rear) with:	integral head restraints	✓
	lockable and removable boot through box	✓
Tachometer, temperature gauge, electronic speedometer and odometer/tripmeter	✓	✓
Tilt adjustable steering wheel	✓	✓
Vanity mirrors (driver and front passenger) with illumination	✓	✓
Ventilation pollen filter	✓	✓
Window demister (rear)	✓	✓
Wipers (front) 2-speed with variable intermittent function	✓	✓
<b>Audio</b>		
AM/FM tuner	✓	✓
Auxiliary input (3.5 mm MP3 player compatible) and 12 volt power outlet	✓	✓
CD player, in-dash 6-disc (MP3 compatible)	✓	✓
Premium Bose® 300 watt amplifier and speakers	✓	-
Speakers, number of	9	6
Steering-wheel-mounted audio controls	✓	✓

	RX-8 Luxury	RX-8 GT
<b>Safety</b>		
Airbags SRS:	front (driver and passenger)	✓
	side (front)	✓
	curtain (front and rear)	✓
Anti-lock Braking System (ABS)	✓	✓
Child restraint anchor points	✓	✓
Day/night rear vision mirror	✓	✓
'Double lock' door deadlock function	✓	✓
Dynamic Stability Control (DSC) - switchable on/off	✓	✓
Electronic Brake-force Distribution (EBD)	✓	✓
Engine immobiliser	✓	✓
High mount stop lamp	✓	✓
Intrusion-minimising brake pedal	✓	✓
Left-hand-side convex (wide angle) exterior mirror	✓	✓
Limited Slip Differential (LSD) torque-sensing	✓	✓
One touch (up and down) power window (driver)	✓	✓
Remote central locking and boot release (2 transmitters with retractable key)	✓	✓
Seat belts 3-point lap-sash (all seats)	✓	✓
Seat belts (front) with pretensioners and load-limiters	✓	✓
Side impact door beams	✓	✓
Traction Control System (TCS)	✓	✓
'Triple H' safety construction with front and rear crumple zones	✓	✓
Whiplash-minimising front seats	✓	✓
<b>Dimensions</b>		
Ground clearance	laden	101 mm
Overall height		1,340 mm
Overall length		4,470 mm
Overall width		1,770 mm
Track	front	1,500 mm
	rear	1,505 mm
Wheelbase		2,700 mm
Cargo room*3	volume (VDA)	290 litres
Kerb weight	man	1,402 kg
	auto	1,412 kg

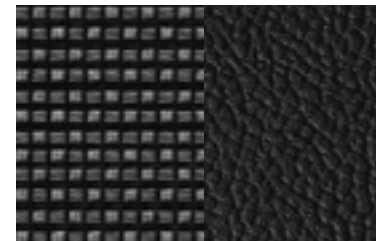
## Interior

### RX-8 Luxury



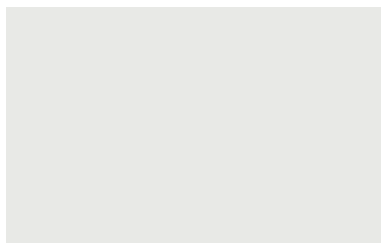
Black Leather\*2

### RX-8 GT



Black Leather\*2/Cloth

## Exterior



Crystal White Pearl  
Mica



Aluminium  
Metallic



Velocity Red  
Mica



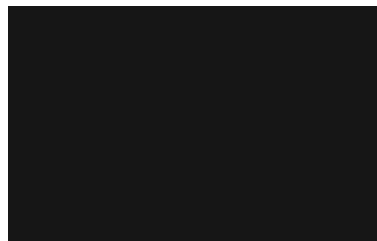
Stormy Blue  
Mica



Sparkling Black  
Mica



Metropolitan Grey  
Mica



Brilliant Black

\*1 Fuel consumption figures are based on ADR 81/02 test results. They are useful in comparing the fuel consumption of different vehicles. They may not be the fuel consumption achieved in practice. This will depend on traffic and road conditions and how the vehicle is driven. \*2 Leather interior includes some Maztex material on selected high impact surfaces. \*3 When spare wheel not carried. All care is taken to ensure the accuracy of this brochure at the time of publication. Specifications, features and model availability may vary from State to State and may change without notice. Please refer to [mazda.com.au](http://mazda.com.au) or consult your Mazda Dealer prior to placing an order to ascertain current information on model availability, specifications, options, features and prices. Mazda Australia Pty Limited will not be liable for any loss arising from the information in this brochure, whether in negligence or otherwise. Mazda Australia Pty Limited ABN 78 004 690 804. 385 Ferntree Gully Road, Mt Waverley, Victoria 3149. RX-8 is covered by a 3-year unlimited kilometre warranty and 6-year panel protection warranty. Please refer to your Dealer. Due to the nature of the printing process, colours may vary from those shown in this brochure. Ask your Dealer to show you a product sample. Published September 2010. MAZ9599.



# *MAZDA RX-8 ACCESSORIES*



mazda



zoom-zoom



You might think your new Mazda RX-8 has all the Zoom-Zoom you could ever need. But Mazda Genuine Accessories make owning and driving a Mazda RX-8 even more enjoyable. Because the accessories you choose enable you to personalise and protect your investment at the same time. They also deliver superb design, quality, fit and safety, all backed by a Genuine Mazda Warranty. Mazda Genuine Accessories let you add even more Zoom-Zoom.



# PERSONALISE & PROTECT YOUR RX-8



## ▲ Rear spoiler.

Improve aerodynamic performance with this stylish, sporty touch.



## ▲ Fuel lid (chrome).

Adds a race car feel to your RX-8.



## ▲ Fuel lid (brushed aluminium).



## ▲ B-pillar garnish (piano black with rotary emblem).

Gives your RX-8 an extra dash of elegance.



## ◀ Auto lights on/off.

Monitors outside light levels and turns headlights on or off accordingly.



## ◀ Alarm system.

Provides superior security and peace of mind.



## ◀ Bluetooth® hands-free kit (with A2DP).

Communicate safely and conveniently with wireless mobile technology.

Hands-Free Profile (HFP) ver. 1.2. Check mobile phone compatibility with your Mazda Dealer.



## ▲ Mazda retractable audio cable (3.5mm male-to-male).

Allows portable audio devices to play via your vehicle's speakers, using the auxiliary jack.

## ◀ Bluetooth® audio transmitter - for iPod.

Wireless adaptor allows iPod to be played through your car's audio system. Includes 12V power adaptor that charges your iPod as you drive.

Available for vehicles fitted with a Mazda accessory Bluetooth® hands-free kit with A2DP.



▼ **Front aero bumper.**

Turn heads with this arresting aero bumper.

**Side aero skirts.** ▲

Improve aerodynamics while creating an even more stylish profile.



▶ **Centre cap (rotary ornament).**  
Adds a subtle signature to your RX-8's alloys.



◀ **Air valve (rotary ornament).**  
A nice little detail to cap things off.



▲ **Reverse parking sensors.**  
Advanced technology that makes parking easier.



▲ **Scuff plates (aluminium).**  
Protect against marks during entry and exit.



▲ **Mud flaps (front)\***  
Protect the side of your vehicle from mud splash and road grime. \*Cannot be fitted with side aero skirts.



▲ **Mud flaps (rear).**  
Protect the rear of your vehicle from mud splash and road grime.



▲ **Floor mat set.**  
Treat your feet and protect your carpet with these tailor-fitted, 100% nylon floor mats.

All care is taken to ensure the accuracy of this brochure at the time of publication. Any accessories or other equipment shown throughout the brochure are for illustration purposes only and do not come standard with the vehicle's purchase. Specifications, features and model availability may vary from State to State and may change without notice. Please refer to [mazda.com.au](http://mazda.com.au) or consult your Mazda Dealer prior to placing an order to ascertain current information on model availability, specifications, options, features and prices. Mazda Australia Pty Limited will not be liable for any loss arising from the information in this brochure, whether in negligence or otherwise. Mazda Australia Pty Limited ABN 78 004 690 804. 385 Ferntree Gully Road, Mount Waverley, Victoria 3149. RX-8 is covered by a 3-year unlimited kilometre warranty and 6-year panel protection warranty. Mazda Genuine Accessories fitted at the point of sale of a new Mazda passenger vehicle are covered under the Mazda 3-year/ unlimited warranty. Mazda Genuine Accessories fitted after the sale of a new Mazda vehicle are covered by the Mazda 2-year or 40,000 kilometre warranty (whichever should occur first). iPod is a trademark of Apple Inc., registered in the U.S. and other countries. Please check the compatibility of your Bluetooth® device (particularly your mobile phone) with the specific Bluetooth® accessory you intend to purchase as not all devices will operate correctly. Consult your Mazda Dealer for further information.

