

ALL 4
THE TIME TOGETHER
THE HIGH LIFE
THE ROOM TO MOVE
THE GREAT DRIVE
THE TRIBECA DRIVER



TRIBECA | 2011

ALL 4 THE DRIVER™



THE 2011 TRIBECA

The 2011 Tribeca 3.6R Premium combines seven seat versatility with outstanding safety and performance credentials, including Subaru's renowned Symmetrical All-Wheel Drive, horizontally-opposed Boxer engine, Vehicle Dynamics Control system and the maximum five-star safety rating from ANCAP.

On the inside, the flexible interior also provides luxurious features. Leather¹ seats, electric sunroof, satellite navigation, rear DVD entertainment system, and *Bluetooth*[®] wireless technology² giving you hands free calling from your mobile phone so you are always in touch (operation ability is subject to *Bluetooth*[®] specification of individual phone).

The 2011 Tribeca 3.6R Premium is packed with all the creature comforts so you can go anywhere in style.



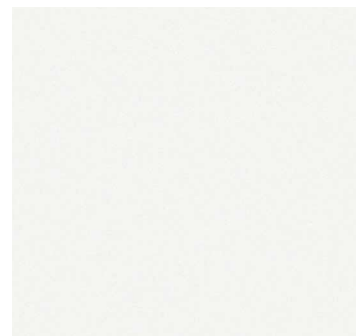
1. Some parts of seating are not full natural leather.

2. *Bluetooth*[®] is a registered trademark of Bluetooth SIG Inc. System operation ability is subject to the *Bluetooth*[®] wireless technology specification of individual's phone.



ALL 4 THE HUE THAT'S... YOU

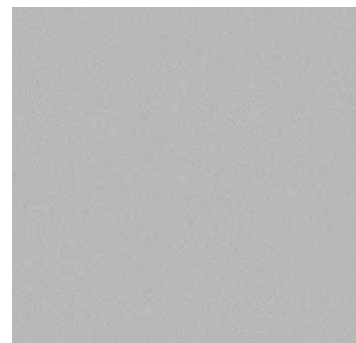
One of the final choices – but one of the most important! The colour you choose for your Tribeca makes a bold statement about who you are. So we've made sure you've got lots of ways to express yourself – with a wide range of colours to make your Tribeca more... you.



Satin white pearl¹



Azurite blue pearl²



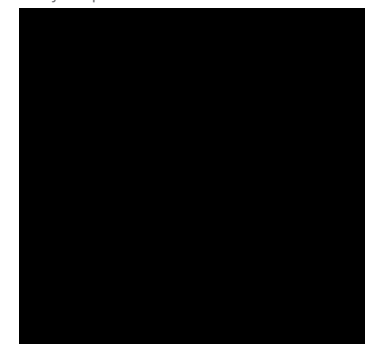
Steel silver metallic¹



Ruby red pearl²



Graphite grey metallic²



Crystal black silica²

1. Available only with slate grey interiors. 2. Available with slate grey or ivory interiors.
Note: Paint colours are representative only and subject to variation due to the printing process.

MY11 TRIBECA SPECIFICATIONS^A

| MODEL | | Tribeca 3.6R 7 Seat Premium | |
|---|---------|---|--|
| TRANSMISSION | | | |
| Electronic 5-speed automatic transmission | | • | |
| ENGINE | | | |
| Engine type | | Horizontally-opposed Boxer 6-cylinder, petrol engine | |
| Valve mechanism | | DOHC with Dual AVCS | |
| Bore x stroke | mm | 92 x 91 | |
| Capacity | cc | 3630 | |
| Compression ratio | | 10.5:1 | |
| Fuel tank capacity | litres | 64 | |
| Fuel system | | Multi point sequential fuel injection | |
| Fuel requirement | RON | 91-98 | |
| PERFORMANCE ^B | | | |
| Maximum power output (DIN) | kW/rpm | 190kW@6000rpm | |
| Maximum torque (DIN) | Nm/rpm | 350Nm@4000rpm | |
| Maximum speed in top gear | km/h | 207 | |
| Acceleration 0 - 100 km/h | Seconds | 8.9 | |
| Electronic Throttle Control system (ETC) | | Drive-by-wire | |
| Fuel consumption (ADR81/02) ^C combined | | l/100km 11.6 | |
| Emission standards | | EURO4 | |
| SYMMETRICAL ALL-WHEEL DRIVE | | | |
| Type | | Variable Torque Distribution | |
| TRANSMISSION | | | |
| Gear ratio | | 1st 3.540 | |
| | | 2nd 2.264 | |
| | | 3rd 1.471 | |
| | | 4th 1.000 | |
| | | 5th 0.834 | |
| Gear ratio - reverse | | 2.370 | |
| Final reduction gear ratio | | 3.583 | |
| STEERING | | | |
| Steering | | Engine speed sensitive power assisted rack and pinion | |
| Minimum turning circle (kerb to kerb) | | m 11.4 | |
| SUSPENSION | | | |
| Type | | Front McPherson strut type independent suspension | |
| | | Rear Double wishbone type independent suspension | |
| BRAKES | | | |
| Type | | Front Ventilated disc brake | |
| | | Rear Ventilated disc brake | |
| Brake booster type | | mm Tandem | |
| ABS | | 4-channel, 4-sensor ABS with Electronic Brakeforce Distribution | |
| WHEELS AND TYRES | | | |
| Tyre manufacturer | | Goodyear | |
| Tyres (width, profile, size, load index and speed rating) | | P255/55 R18 104H | |
| Rim size | | 18 x 8JJ | |
| Wheels | | 18" | |
| Spare wheel | | Spacesaver steel wheel | |
| MEASUREMENT | | | |
| Overall length | | mm 4865 | |
| Overall width | | mm 1880 | |
| Overall height | | mm 1730 (with roof rails) | |
| Wheel base | | mm 2745 | |
| Front track | | mm 1575 | |
| Rear track | | mm 1575 | |
| Minimum ground clearance ^D | | mm 210 | |
| Cargo volume - floor to bottom of side windows 3rd seat folded down | | litres 450 | |
| Cargo volume - floor to roof 2nd & 3rd seat folded down | | litres 1495 | |
| Kerb weight | | kg 1950 | |
| Tare mass | | kg 1910 | |
| Seating capacity | | 7 | |
| TOWING | | | |
| With trailer brakes | | kg 2000 | |
| Without trailer brakes | | kg 750 | |
| Maximum tow ball down load | | kg 160 | |

A. Subaru Australia reserves the right to change mechanical specification and equipment levels without notice. B. All performance data measured using 95RON. C. Fuel consumption figures calculated in accordance with Australian Design Rules 81/02. D. Ground clearance at kerb weight.

MY11 TRIBECA STANDARD FEATURES¹

| MODEL | 3.6R 7 Seat Premium |
|---|---------------------|
| SAFETY RATING | |
| ANCAP ² occupant safety rating (max. 5) | 5-star |
| COLLISION AVOIDANCE | |
| Symmetrical All-Wheel Drive (SAWD) | • |
| Vehicle Dynamics Control system (VDC) | • |
| Anti-lock Braking System (ABS) | • |
| 4-wheel disc brakes | • |
| Brake Assist | • |
| Electronic Throttle Control system (ETC) | • |
| Rear view reverse camera | • |
| COLLISION PROTECTION | |
| SRS ³ Airbags - dual front | • |
| SRS ³ Airbags - dual front side | • |
| SRS ³ Airbags - curtain (front and rear, both sides) | • |
| 3 point A/ELR rear seatbelts | • |
| Seatbelt warning lights - driver and front passenger | • |
| Height adjustable seatbelt anchors - driver, front passenger and 2nd row rear passenger | • |
| Active driver and passenger headrests | • |
| Front seatbelts with pretensioners and load limiters | • |
| Rear seat headrests for 3 seating positions | • |
| Safety pedals - brake / footrest | • |
| Ring-shaped passenger safety cell | • |
| CHILD SAFETY | |
| Child seat anchor points (x4) | • |
| Rear door child locks | • |
| SECURITY | |
| DataDot security system | • |
| Immobiliser security system | • |
| EXTERIOR | |
| Front and rear wipers with de-icer | • |
| Body coloured door mirrors with indicators - heated | • |
| Rear door, rear quarter and rear windscreen | Privacy Glass |
| Rear roof spoiler | • |
| Roof rails | • |
| Electric sunroof | • |
| 18" alloy wheels (10 spoke) | • |
| Spacesaver spare wheel (steel) | • |
| LIGHTING - EXTERIOR | |
| Headlights - self-levelling Xenon low beam with auto off | • |
| Front foglights | • |
| Rear combination lights | • |
| Rear bumper reflectors | • |
| LIGHTING - INTERIOR | |
| Cabin and cargo area lights | • |
| Illuminated ignition ring | • |
| Map lights (x2) | • |
| AIR-CONDITIONING | |
| Air-conditioning - dual zone climate control | • |
| Anti-dust filters | • |
| Heater ducts for rear passengers | • |
| Rear seat air-conditioning control (manual) | • |
| Front and side demisters | • |
| Rear window demister - electric with timer | • |

| MODEL | 3.6R 7 Seat Premium |
|--|----------------------------|
| INSTRUMENTATION AND CONTROLS | |
| Adjustable steering wheel - height | • |
| Steering wheel audio controls | • |
| Cruise control | • |
| Instrument cluster ⁴ | • |
| Multi-information ⁵ display | • |
| Park brake - foot activated | • |
| Automatic transmission with manual mode | • |
| Steering column - height adjustable | • |
| Warning indicators ⁶ | • |
| STORAGE | |
| Centre console box | • |
| Cupholders (x10) | • |
| Lower console box | • |
| Pull-out cargo area tie down points | • |
| Seat back pockets - driver and front passenger side | • |
| Overhead console - sunglass holder | • |
| CONVENIENCE | |
| Remote central locking keys (x2) | • |
| Rear seat centre armrest | • |
| Sunvisor vanity mirrors - driver and front passenger (illuminated) | • |
| 12v/120W power jacks (x4) | • |
| INTERIOR | |
| Leather steering wheel and gearshift | • |
| Seat trim - leather ⁷ | Grey or Ivory ⁸ |
| SEATING EXTRAS | |
| 8-way power seat with dual memory - driver | • |
| 8-way power seat - front passenger | • |
| Manual Schukra lumbar support - driver and front passenger | • |
| Heated seats - driver and front passenger | • |
| Seats - 2nd row with 40/20/40 split, fold flat, mid-way lock slide and recline functions | • |
| Seats - 3rd row with 50/50 split and fold flat functions | • |
| ENTERTAINMENT | |
| AM/FM radio, 6-stack in-dash CD player/8 speaker stereo with subwoofer | • |
| Rear DVD entertainment system with 9" display screen ⁹ | • |
| Remote control rear DVD entertainment system | • |
| Multi-information in-dash satellite navigation system (7" touch screen) | • |
| Wireless headsets (x2) | • |
| Auxiliary jack - front centre console | • |
| Bluetooth ^{®10} wireless technology | • |
| WARRANTY | |
| 3 year/unlimited km warranty | • |

1. Subaru Australia reserves the right to change mechanical specification and equipment levels without notice. 2. The Australasian New Car Assessment Program (ANCAP) gives consumers consistent information on the level of occupant protection provided by vehicles in serious front and side crashes. 3. SRS: Supplemental Restraint System. Effective when used in conjunction with seatbelts. 4. Instrument cluster includes speedometer, tachometer, trip computer, fuel gauge, AT select indicator, cruise control indicator, high beam indicator, front fog light indicator. 5. Multi-information display - includes fuel economy, temperature and clock. 6. Warning indicators - include indicators for door ajar, oil pressure, water temp, brake fluid, parking brake, check engine, low fuel, ABS, TCS/VDC, airbag, AT AWD, AT oil temp. 7. Some parts of seating not full natural leather. 8. Ivory leather trim only available on Ruby Red Pearl, Crystal Black Silica, Graphite Grey Metallic and Azurite Blue Pearl. 9. Compatible with video DVDs, video CDs and audio CDs. Not compatible with audio DVDs, MP3 and WMA. Front satellite navigation screen can be used to receive video when the car is stationary. 10. Bluetooth[®] is a registered trademark of Bluetooth SIG Inc. System operation ability is subject to the Bluetooth[®] wireless technology specification of individual's phone.

TRIBECA AWARDS

- 2006 • Australasian New Car Assessment Program (ANCAP) five-star occupant safety rating.
- Interior of The Year Award, crossover Utility Vehicle Category – Wards Auto World Magazine, USA.

subaru.com.au

Subaru (Aust) Pty Limited ABN 95 000 312 792 (Subaru Australia)
Level 3, 4 Burbank Place, Baulkham Hills NSW 2153. Toll Free: 1800 226 643

This brochure is intended to be a general guide to Subaru vehicles, products and features. Subject to law, Subaru Australia reserves the right to vary vehicle specifications and standard features in Australia from those detailed in this brochure at any time and without notice. Vehicles shown in this brochure may be fitted with optional equipment and/or accessories which are available at additional cost. Contact your local authorised Subaru retailer to confirm exact vehicle specifications, prices, optional equipment and accessories before ordering.

© Copyright 2010 - Subaru (Aust) Pty Limited. All rights reserved. No part of this brochure may be reproduced without prior written permission from Subaru (Aust) Pty Limited.