



mazda



MX-5



Mazda6



Mazda3



BT-50



Mazda2



CX-9



CX-5

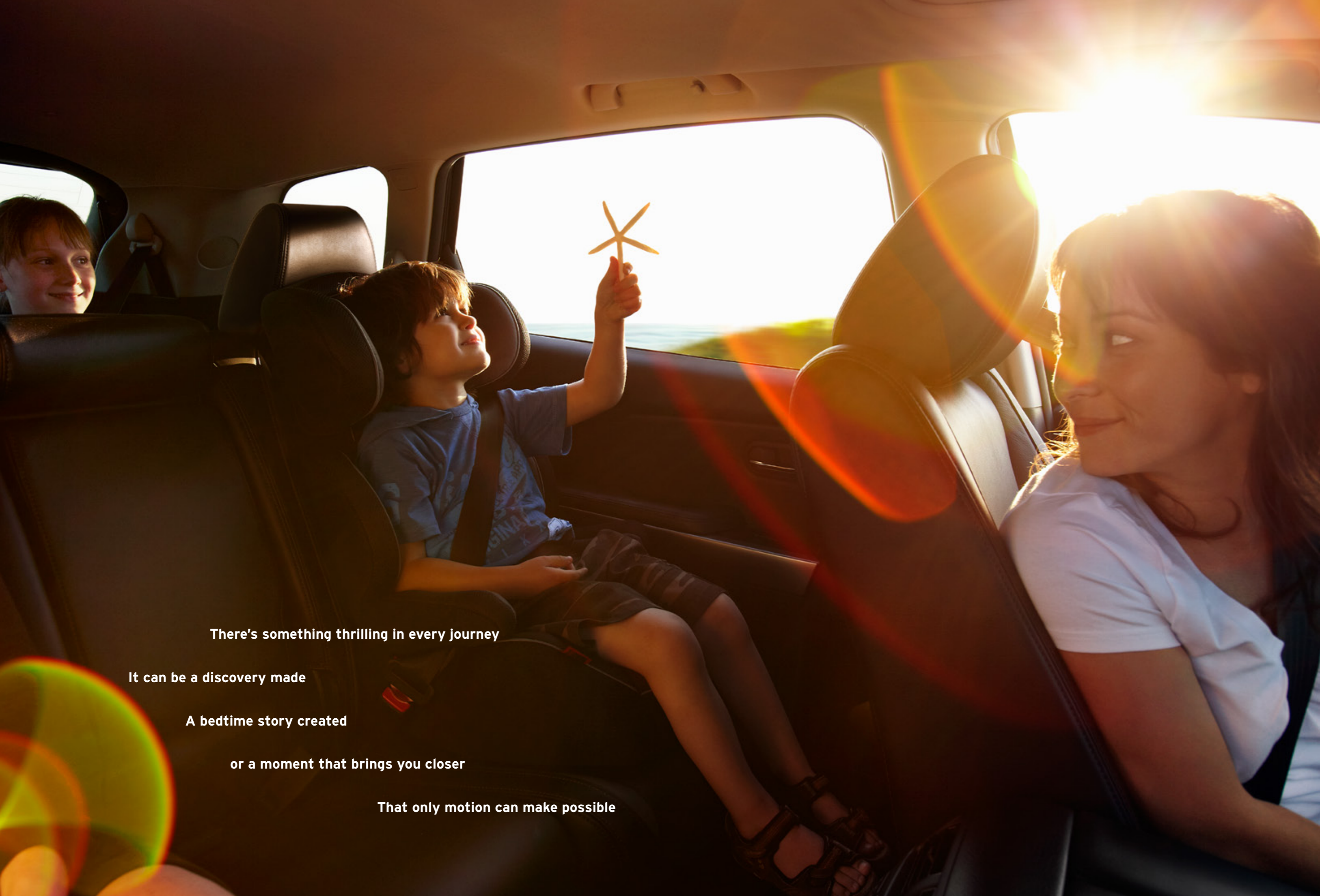
Mazda CX-9  
zoom-zoom  
zoom-zoom



zoom-zoom  
zoom-zoom



mazda



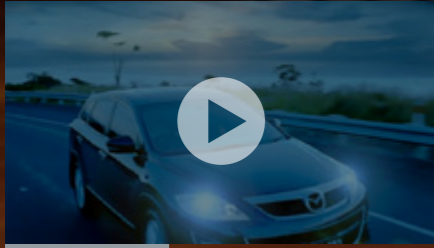
There's something thrilling in every journey

It can be a discovery made

A bedtime story created

or a moment that brings you closer

That only motion can make possible



WATCH VIDEO >

The next adventure is always ahead

Mazda CX-9 invites seven people along

To experience quiet luxury

that's inspired by sporting spirit

It's a feeling of enjoyment we call Zoom-Zoom



zoom-zoom  
zoom-zoom  
zoom-zoom

## SEVEN SEATS HAVE NEVER MOVED LIKE THIS

Its looks are a long way from those same-old SUVs, and so is the way CX-9 drives.

A smooth 3.7 litre V6 engine lets you effortlessly move people and gear, or really power on when the feeling takes you. You'll barely notice the Activematic transmission shifting through its 6-speeds. Fully independent suspension keeps you blissfully unaware of bumps in the road and corners with the

sort of roll-free composure full size SUVs normally can't deliver. Active Torque Split all-wheel drive extracts every last bit of enjoyment the road has to offer, constantly assessing conditions and distributing torque with grippy precision.

Or opt for the front-wheel drive model, which goes all out to spoil you with space and luxury.



**Smooth and strong.** V6 engine produces 204kW and 367Nm of torque. It works in powerful harmony with responsive Activematic transmission.



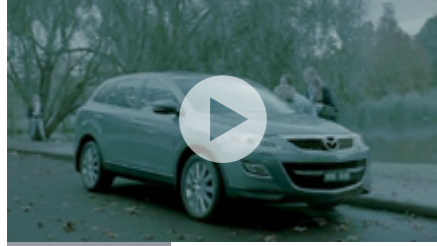
**Enjoy the ride.** Mazda CX-9 treats you to the smooth ride of supple independent suspension, which combines with Active Torque Split All-Wheel Drive in selected models.



[WATCH CX-9 OVERVIEW FOOTAGE >](#)



*SPOIL THE FAMILY.  
ESPECIALLY YOURSELF*



WATCH TV AD >

Talk about being well looked after. There's three-zone climate control to keep everyone in their comfort zone, MP3 connectivity and no end of handy places for coffee, coins and other stuff. The soft leather-wrapped steering wheel adjusts this way and that to position you perfectly and carries cruise and audio controls so you barely have to budge.

A 4.3 inch colour LCD links to the rear-view camera, and also tells you where CD, radio and audio settings are at. Models with sat-nav feature a 7 inch screen that puts you right in the picture - a mere touch, controlling navigation, audio and Bluetooth® for hands-free hook up of phones and tunes.

Sound good? So does the in-dash CD player. Luxury and Grand Touring carry you away on an irresistible 277 watt, ten speaker wave of Bose® audio.

MP3 WMA Bluetooth BOSE



## *NO WONDER EVERYONE WANTS TO COME ALONG*

It doesn't just accommodate seven; it spoils them with personal space.

Jump in the driver's seat in Luxury or Grand Touring models and 3-position memory has your comfort in mind. All seats are full-size and with lots of leg-room, passengers won't trip over the chair in front, or anybody else.

One pull of a handle opens the 3rd-row up for access. Both 2nd and 3rd-row go out of their way to make things easy, splitting and folding to take cargo room from generous to enormous.

Leave the seats in place and you'll still make light work of most loads. There are all kinds of places to store all kinds of stuff, from

console compartments to cupholders for passengers in the back.

And the comfort just keeps coming. Not content with offering room for the whole family, Mazda CX-9 adds all the extra touches. Classic grade seats you on black cloth trim that feels a cut above.

Beyond that it's flat out opulence, with Luxury and Grand Touring boasting rich leather<sup>7</sup> trim in either elegant sand or black, power adjustable heated front seats and a sunroof.

In fact every model makes your life easy; power windows, rain-sensing wipers and automatic on/off headlamps are included as standard equipment.



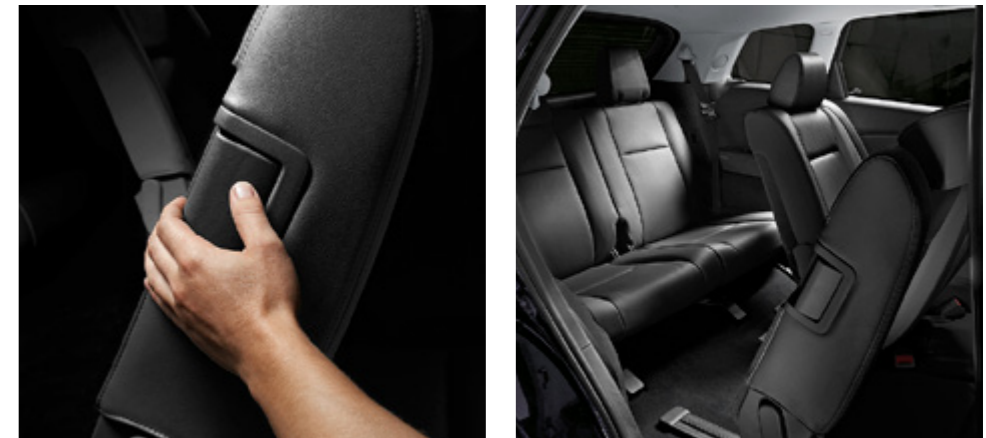
GRAND TOURING WITH BLACK LEATHER<sup>7</sup>



GRAND TOURING WITH SAND LEATHER<sup>7</sup>



**Family room.** Seven full-sized seats, generous luggage space and impressive versatility just perfect for family life.



**Jump in.** Just pulling a latch opens up access to comfortable 3rd-row seating.



**Clear to see.** Instrument cluster lit in distinctive amber-red. Luxury and Grand Touring complement this with indirect blue illumination.



**Open to anything.** Both 2nd and 3rd-row seats can be folded flat to create enormous load space. 50/50 split 3rd-row seats fold easily for added flexibility.



**All mapped out.** Satellite navigation is standard on Grand Touring, optional on Luxury. Large 7 inch touch screen makes directions clear.

**Keep in touch.** Bluetooth® connectivity allows you to talk with hands-free ease and safety.

**You're sorted.** Centre armrest console conveniently opens in two parts, revealing a large storage compartment. Lockable, illuminated glove box extends storage options while rear cupholders make passengers welcome.



## SOMEWHERE THE FAMILY CAN FEEL SAFE

Mazda CX-9 takes your safety very seriously. The Mazda Advanced Impact Distribution and Absorption System (MAIDAS) augments the extremely rigid passenger cell by absorbing and redirecting impact energy away from it.

Side-impact door beams are integrated and there are front and side-impact airbags, plus full-length curtain airbags covering all three rows as standard.

Front seats feature belt pretensioners and load-limiters plus active head restraints. And it's good to know

Dynamic Stability Control (DSC) is there to help prevent skids or loss of control on slippery roads.

Also on your side are ABS with Electronic Brake-force Distribution (EBD), Emergency Brake Assist (EBA) and Roll Stability Control, which detects potential rollovers and automatically stabilises the vehicle.

Intruders are fended off by remote central locking and an engine immobiliser. Add a rear-view camera for safer reversing and you've got great protection from front to back.

Before activation After activation



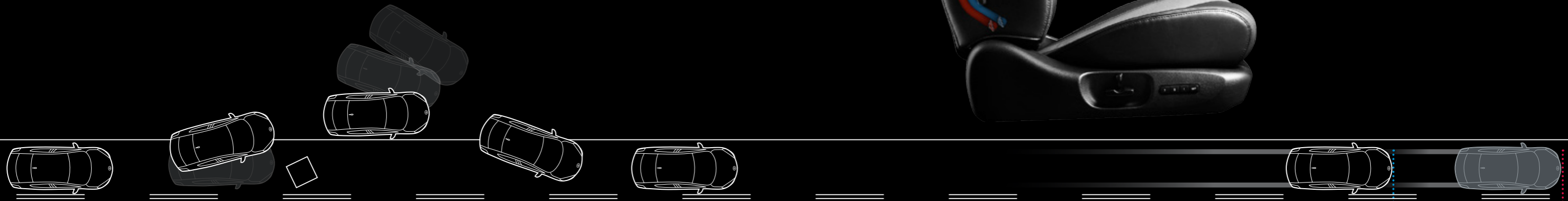
**Right behind you.** Front seats are equipped with active head restraints. In the event of a rear-end impact they instantly move forward, bracing the neck against potential injury.



WATCH THE STABILITY CONTROL ANIMATION >



WATCH THE ROLL STABILITY CONTROL ANIMATION >



**So what if you're faced with an unanticipated hazard on the road and have to react suddenly?**

DSC acts instantly, braking the inner rear wheel to counter understeer (or outer front wheel to counter oversteer). At the same time, the Traction Control System (TCS) reduces torque to the driven wheels to minimise slip. As a result, control is maintained and the vehicle can be safely steered around the obstacle.

**Stopping with certainty.** Stopping distance with EBA, ABS and EBD.

Stopping distance with no assistance.



An extra pair of eyes. Shift into reverse and the rear-view camera automatically shows you what's behind on screen.



**Safety through and through.** 'Triple H' construction combines strong safety cell with front and rear crumple zones. It's all part of our advanced MAIDAS.

**Built-in security.** Front and side-impact airbags, including full-length curtain airbags, are integrated to ensure all passengers enjoy the highest level of protection.

SRS AIRBAG



## CX-9 CLASSIC

**Mazda CX-9 Classic spoils up to seven people with stylish luxury. It also spoils drivers with responsive performance.**

- 3.7 litre V6 24 valve DOHC S-VT
- 204 kW @ 6,250 rpm and 367 Nm @ 4,250 rpm
- 6-speed Activematic (auto) transmission
- 18 inch alloy wheels
- Fog-lamps (front)
- Headlamps (Halogen)
- Power mirrors (body coloured)
- Power windows
- Rear spoiler
- Air-conditioning  
(three-zone climate control with independent rear control)
- Cruise control
- Headlamps auto on/off function
- Seat trim: cloth
- Seats (2nd row) with: 60/40 split-fold backrest
- Seats (3rd row) with: 50/50 split-fold backrest (flat fold)
- Tilt and telescopic adjustable steering wheel
- Trip computer (current and average fuel consumption, distance to empty and average vehicle speed)
- Wipers (front) 2-speed with rain-sensing function
- AM/FM tuner with CD player, in-dash 6-disc (MP3/WMA compatible) and 6 speakers
- Auxiliary input (3,5 mm MP3 player compatible)
- Active head restraints (front)
- Airbags SRS: front (driver and passenger), side (front) and curtain (front and rear)
- Anti-lock Braking System (ABS)
- Dynamic Stability Control (DSC)
- Electronic Brake-force Distribution (EBD)
- Emergency Brake Assist (EBA)
- Reversing camera
- Roll Stability Control (RSC)
- Seat-belts 3-point lap-sash (all seats)
- Traction Control System (TCS)
- Towing capacity (braked) 2,000 kg<sup>4</sup>



FWD



**On screen.** Easy-to-read 4.3 inch LCD shows you audio functions and rear-view images.



**Comfort from front to back.** Control panel lets rear seat passengers choose their preferred temperature.



**Select enjoyment.** Smooth 6-speed Activematic gives you effortless automatic shifting, or the involvement of manual gear selection.





**Enjoy the elements.** Fresh air and sunshine; power-sliding glass sunroof can also be tilted.

**Keeping watch.** During reversing rear-view mirrors dip to enhance your view, then automatically return to position.

**Stirring sounds.** Be moved by the impressive power and performance of 277 watt, 10 speaker Bose® audio.

## CX-9 LUXURY

There's even more to indulge you in CX-9 Luxury. With its extra style and features, it treats seven people to a special experience.

Luxury features additional to the Classic include:

- Active Torque Split (ATS) All-Wheel Drive system<sup>2</sup> (AWD model only)
- 20 inch alloy wheels
- Door handles (chrome)
- Power mirrors (heated with 3-position memory and reverse tilt-down function)
- Power-sliding and tilt glass sunroof
- Seat trim: leather<sup>7</sup>
- Seats (front) with: power adjustment (driver and passenger), heating function (driver and passenger) and 3-position memory function (driver)
- Premium Bose® 277 watt amplifier and 10 speakers (including subwoofer)

Optional satellite navigation<sup>6</sup> package includes:

- Bluetooth® (hands free compatible)
- Satellite navigation<sup>6</sup>
- Bluetooth® audio (MP3 player compatible)
- CD player, single disc (MP3/WMA compatible)<sup>8</sup>



FWD



AWD



## CX-9 GRAND TOURING

**CX-9 Grand Touring spoils its occupants in the grandest possible way. Its added technology and luxury take indulgence to the highest level.**

Grand Touring features additional to the Luxury include:

- Headlamps (Xenon low beam)
- Remote operated power tailgate (open/close)
- Bluetooth® (hands-free compatible)
- Satellite navigation
- Smart keyless entry
- Bluetooth® audio (MP3 player compatible)
- CD player, single disc (MP3/WMA compatible)



AWD



**Clear advantage.** Xenon headlamps boost night driving safety with clear, powerful light. Integrated washers clean lenses for optimum performance.



**It's automatic.** Power tailgate unlocks, opens and closes via a button on the remote locking unit.



**Keyless means effortless.** Smart keyless entry lets you get in and go without searching for keys. By carrying the remote locking fob you simply enter by pressing a button on either front door and start up via a keyless ignition switch.



# SPECIFICATIONS

FWD Classic

FWD Luxury

AWD Luxury

AWD Grand Touring

## Powertrain

Engine type	3.7 litre V6 24 valve DOHC S-VT			
Engine capacity	3,726 cc			
Bore and stroke	95.5 mm x 86.7 mm			
Compression ratio	10.3 : 1			
Maximum power	204 kW @ 6,250 rpm			
Maximum torque	367 Nm @ 4,250 rpm			
Throttle control	Electronic (drive-by-wire)			
Fuel system	Electronic port injection			
Fuel tank capacity	76 litres			
Recommended fuel	Unleaded (91RON or higher) or E10			
Fuel consumption <sup>1</sup>	combined	11.0 (FWD) 11.2 (AWD) litres per 100 km		
Emissions standard	Euro stage IV			
Activematic (auto) transmission	6-speed			
Gear ratio	1st	4.148		
	2nd	2.370		
	3rd	1.555		
	4th	1.154		
	5th	0.859		
	6th	0.685		
	reverse	3.393		
	final drive	3.464		

## Chassis

All-Wheel Drive (AWD) system	-		Active Torque Split <sup>2</sup> (ATS)	Active Torque Split <sup>2</sup> (ATS)
Brake diameter	front	320 mm		
	rear	325 mm		
Brake type	front	Ventilated disc		
	rear	Ventilated disc		
Steering type	Hydraulic power assist steering			
Suspension	front	MacPherson strut		
	rear	Multi-link		
Turning circle	kerb to kerb	11.4 m		
Tyre size	245/60R18 104H	245/50R20 102V	245/50R20 102V	245/50R20 102V
Tyre size (spare)	195/80R17			
Wheel size	18 x 7.5 J	20 x 7.5 J	20 x 7.5 J	20 x 7.5 J
Wheel size (spare)	17 x 5.5 J			
Wheel type	Alloy			
Wheel type (spare)	Temporary			

## Weights and capacities

Cargo room	volume (VDA)	litres	267	267	267	267
	volume (VDA) <sup>3</sup>	litres	928	928	928	928
Kerb weight		kg	1,939	1,974	2,071	2,088
Towing capacity <sup>4</sup>		kg	2,000	2,000	2,000	2,000
		kg	750	750	750	750

FWD Classic

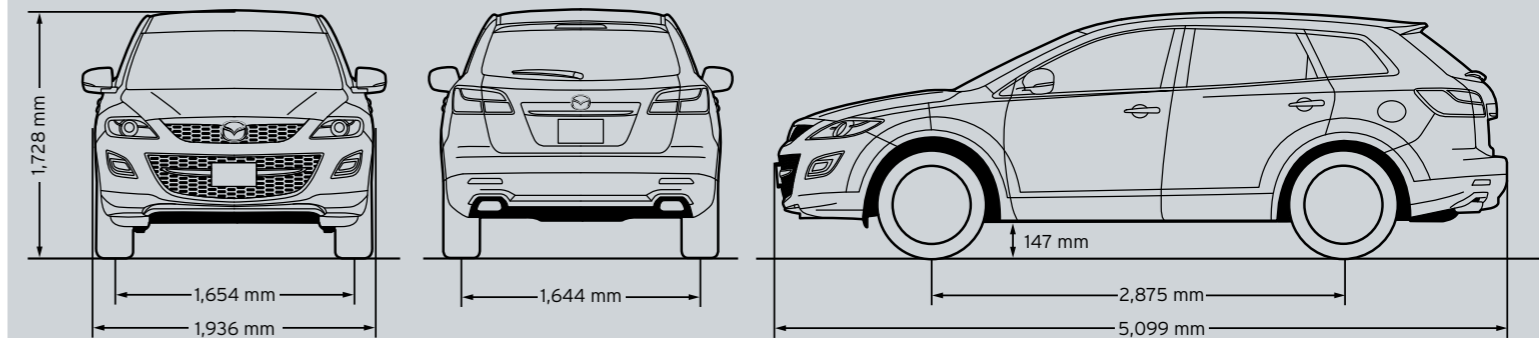
FWD Luxury

AWD Luxury

AWD Grand Touring

## Dimensions

Ground clearance	laden	mm	147	147	147	147
Overall length		mm	5,099	5,099	5,099	5,099
Overall width		mm	1,936	1,936	1,936	1,936
Overall height		mm	1,728	1,728	1,728	1,728
Track	front	mm	1,654	1,654	1,654	1,654
	rear	mm	1,644	1,644	1,644	1,644
Wheelbase		mm	2,875	2,875	2,875	2,875



## Exterior

Aerial printed into rear glass	●	●	●	●
Door handles (chrome)	-	●	●	●
Exhaust extensions (chrome)	●	●	●	●
Fog-lamps (front)	●	●	●	●
Front and rear bumpers (body coloured)	●	●	●	●
Green-tinted windscreen, side and rear windows	●	●	●	●
Headlamps (Halogen)	●	●	●	-
Headlamps (Xenon low beam)	-	-	-	●
Metallic/Mica paint	●	●	●	●
Mudflaps (front and rear)	●	●	●	●
Power mirrors (body coloured)	●	●	●	●
Power mirrors (heated with 3-position memory and reverse tilt-down function)	-	●	●	●
Power-sliding and tilt glass sunroof	-	●	●	●
Power windows	●	●	●	●
Rear spoiler	●	●	●	●
Remote operated power tailgate (open/close)	-	-	-	●
Roof rack mounting points	●	●	●	●

# SPECIFICATIONS

FWD Classic FWD Luxury AWD Luxury AWD Grand Touring

## Interior

Air-conditioning (three-zone climate control with independent rear control)	●	●	●	●
Ambient temperature display	●	●	●	●
Blackout instrument cluster	●	●	●	●
Bluetooth® (hands-free compatible)	–	○ <sup>5</sup>	○ <sup>5</sup>	●
Cargo area 12 volt power outlet	●	●	●	●
Cargo area tie-down hooks	●	●	●	●
Cargo area underfloor storage box	●	●	●	●
Centre armrest console	●	●	●	●
Critical function warning lights/chimes	●	●	●	●
Cruise control	●	●	●	●
Cupholders	●	●	●	●
Digital clock	●	●	●	●
Door map pockets (front)	●	●	●	●
Driver's left footrest	●	●	●	●
Glasses storage compartment	●	●	●	●
Glove box (lockable and illuminated)	●	●	●	●
Headlamps auto on/off function	●	●	●	●
Heating ducts to second and third row passengers	●	●	●	●
Illuminated entry system with delayed fade	●	●	●	●
Instrument panel light dimmer	●	●	●	●
Interior illumination:				
cargo room lamp	●	●	●	●
ignition key surround	●	●	●	–
map reading spot lamps	●	●	●	●
power window switches	●	●	●	●
Interior release for fuel filler door	●	●	●	●
Leather-wrapped:				
gear shift knob	●	●	●	●
steering wheel	●	●	●	●
Lights-left-on audible warning	●	●	●	●
Low fuel warning light	●	●	●	●
Passenger assist grips (front and rear)	●	●	●	●
Satellite navigation	–	○ <sup>5</sup>	○ <sup>5</sup>	●
Seat trim:				
cloth	●	–	–	–
leather <sup>7</sup>	–	●	●	●
Seats (front) with:				
3-position memory function (driver)	–	●	●	●
4-way power adjustment (passenger)	–	●	●	●
8-way power adjustment (driver)	–	●	●	●
adjustable head restraints	●	●	●	●
heating function	–	●	●	●
height adjustment (driver)	●	●	●	●
lumbar adjustment (driver)	●	●	●	●
rake and slide adjustment	●	●	●	●
seat back pockets	●	●	●	●
seat-base tilt adjustment (driver)	–	●	●	●
Seats (2nd row) with:				
60/40 split-fold backrest	●	●	●	●
adjustable head restraints	●	●	●	●
centre fold down armrest	●	●	●	●
rake and slide adjustment	●	●	●	●
Seats (3rd row) with:				
50/50 split-fold backrest (flat fold)	●	●	●	●
integral head restraints	●	●	●	●
Smart keyless entry and engine start	–	–	–	●

FWD Classic FWD Luxury AWD Luxury AWD Grand Touring

## Interior (continued)

Tachometer and electronic odometer/tripmeter	●	●	●	●
Tilt and telescopic adjustable steering wheel	●	●	●	●
Trip computer (current and average fuel consumption, distance to empty and average vehicle speed)	●	●	●	●
Vanity mirrors (front) with illumination	●	●	●	●
Ventilation pollen filter	●	●	●	●
Window demister (rear)	●	●	●	●
Wipers (front) 2-speed with rain-sensing function	●	●	●	●
Wiper (rear) with intermittent function	●	●	●	●

## Audio

AM/FM tuner	●	●	●	●
Auxiliary input (3.5 mm MP3 player compatible)	●	●	●	●
Bluetooth® audio (MP3 player compatible)	–	○ <sup>5</sup>	○ <sup>5</sup>	●
CD player, single disc (MP3/WMA compatible)	–	○ <sup>5</sup>	○ <sup>5</sup>	●
CD player, in-dash 6-disc (MP3/WMA compatible)	●	● <sup>8</sup>	● <sup>8</sup>	–
Premium Bose® 277 watt amplifier and speakers (including subwoofer)	–	●	●	●
Speakers (6)	●	–	–	–
Speakers (10)	–	●	●	●
Steering wheel-mounted audio controls	●	●	●	●

## Safety

Active head restraints (front)	●	●	●	●
Airbags SRS: front (driver and passenger), side (front), curtain (front and rear)	●	●	●	●
Anti-lock Braking System (ABS)	●	●	●	●
Child restraint anchor points (2nd row only)	●	●	●	●
Childproof rear door locks	●	●	●	●
Day/night rear vision mirror	●	●	●	●
'Dual stage' door unlocking function	●	●	●	●
Dynamic Stability Control (DSC)	●	●	●	●
Electronic Brake-force Distribution (EBD)	●	●	●	●
Emergency Brake Assist (EBA)	●	●	●	●
Engine immobiliser	●	●	●	●
High mount stop lamp	●	●	●	●
Intrusion-minimising brake pedal	●	●	●	●
Left-hand-side convex (wide angle) exterior mirror	●	●	●	●
One touch (up and down) power window (driver and passenger)	●	●	●	●
Remote central locking (2 transmitters)	●	●	●	●
Reversing camera	●	●	●	●
Roll Stability Control (RSC)	●	●	●	●
Seat-belts 3-point lap-sash (all seats)	●	●	●	●
Seat-belts (front) with pretensioners, load-limiters and height adjustable shoulder anchorages	●	●	●	●
Side impact door beams	●	●	●	●
Traction Control System (TCS)	●	●	●	●
'Triple H' safety construction with front and rear crumple zones	●	●	●	●



## 'TAKUMI' A TRADITION OF MASTER CRAFTSMANSHIP

In Japan outstanding craftsmen are known as 'Takumi'. To reach this level, they must hone their craft over time by closely observing a master. In a way this learning never ends; they always aim for a higher level, to produce something truly exceptional. The superb skill of 'Takumi' is embodied by Japanese sword makers and calligraphers. Guided by tradition, their work is exacting, timeless and beautiful. At Mazda we know it's the skill of our people that allows us to reach the highest standards - so our engineers are fostered in one-on-one training for two years. That way each Mazda is crafted with quality you can appreciate for years to come.

### Rest assured - your warranty



Mazda CX-9 is backed up by a 3-year, unlimited kilometre factory warranty and 6-year panel protection warranty.

Technicians and advanced computer diagnostic systems. As well as maintaining your Mazda in A1 condition, you'll also be protecting your vehicle's outstanding resale value.

### Maintain that Zoom-Zoom

A car like Mazda CX-9 deserves the best in care. Servicing through the Mazda Maintenance Program gives your car the advantage of factory trained Service

### Help is at hand - Mazda Roadside Assistance

Flat batteries, running out of fuel and flat tyres are the kind of hiccups everyone faces from time to time. When the unexpected

happens, Mazda Roadside Assistance is there to keep you moving. You'll be covered 24 hours a day, 365 days a year, anywhere in Australia. Better still, your Mazda will only be worked on by Mazda-approved technicians. Choose a Standard policy offering everything required to get you going again, or the Premium policy with extra benefits like accommodation, a rental car and vehicle recovery. Either policy can be purchased across the entire Mazda range.

### Accessories add enjoyment

Mazda CX-9 spoils you with style and luxury. And Mazda Genuine Accessories make owning and driving one even more special. They let you personalise your vehicle and protect your investment. They also give you superb design, quality, fit and safety, all with the reassurance of a Mazda warranty. Mazda Genuine Accessories let you add even more Zoom-Zoom.

For further information visit [mazda.com.au](http://mazda.com.au) or Freecall 1800 034 411



Like us on the official Mazda Australia fan page for the latest pictures, videos, events, news and competitions. Ask questions, give feedback or upload your own photos. Join the conversation at [facebook.com/mazdaaus](https://www.facebook.com/mazdaaus)



Share your love of photography and all things Zoom-Zoom on Flickr. You'll find a whole collection of the latest snaps captured by Mazda drivers. Simply join MazdaAus group. [flickr.com/groups/mazdaaus](https://www.flickr.com/groups/mazdaaus)



Visit Mazda Australia's YouTube channel. You'll find video content with exclusive behind-the-scenes footage. Plus Mazda E-Motion TV. [youtube.com/zoomzoom](https://www.youtube.com/zoomzoom)

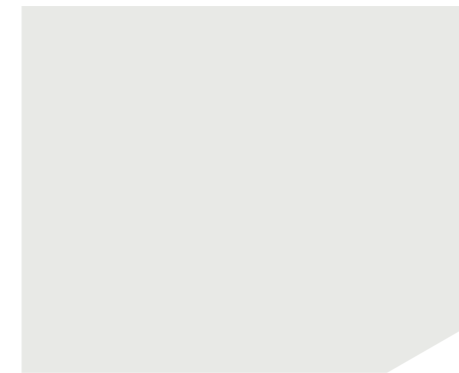


Join the conversation on Twitter. Keep up with breaking Mazda news, videos and pictures from around the web. Tweet your questions, give feedback or post your own photos. [twitter.com/mazdaaus](https://www.twitter.com/mazdaaus)

All care is taken to ensure the accuracy of this brochure at the time of publication. Specifications, features and model availability may vary from State to State and may change without notice. Please refer to [mazda.com.au](http://mazda.com.au) or consult your Mazda Dealer prior to placing an order to ascertain current information on model availability, specifications, options, features and prices. Mazda Australia Pty Limited will not be liable for any loss arising from the information in this brochure, whether in negligence or otherwise. Mazda Australia Pty Limited ABN 78 004 690 804. 385 Ferntree Gully Road, Mt Waverley, Victoria 3149. iPhone and accessories are shown for illustrative purposes only and do not come standard with the vehicle. Please check the compatibility of your Bluetooth® device (particularly your mobile phone) with the specific Mazda vehicle you intend to purchase as not all devices will operate correctly. Visit [mazdahandsfree.com.au](http://mazdahandsfree.com.au) or consult your Mazda Dealer for further information. Due to the nature of the printing process, colours may vary from those shown in this brochure. Ask your Dealer to show you a product sample. Published March 2012. MAZI0267 126.036

## COLOURS

### Exterior



Crystal White Pearl ■ ▲  
Mica



Aluminium ■ ▲  
Metallic



Dolphin Grey ■ ▲  
Mica



Copper Red ■ ▲ ●  
Mica



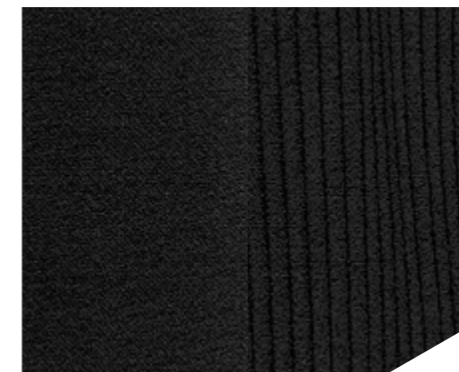
Stormy Blue ■ ▲ ●  
Mica



Sparkling Black ■ ▲ ●  
Mica

### Interior

#### Classic



■ Black Cloth

#### Luxury and Grand Touring



▲ Black Leather<sup>7</sup>

#### Luxury and Grand Touring



● Sand Leather<sup>7</sup>

<sup>1</sup> Fuel consumption figures are based on ADR81/02 test results. They are useful in comparing the fuel consumption of different vehicles. They may not be the fuel consumption achieved in practice. This will depend on traffic and road conditions and how the vehicle is driven. <sup>2</sup> Active Torque Split (ATS) AWD system automatically adjusts front/rear wheel torque distribution between 100:0 and 50:50. <sup>3</sup> Measured with 3rd row seats folded. <sup>4</sup> Subject to State or Territory regulations. <sup>5</sup> Optional satellite navigation package. <sup>6</sup> Satellite navigation package is only available with a single disc CD player. <sup>7</sup> Leather interior includes Maztex material on selected high impact surfaces. <sup>8</sup> A 6-disc CD player is not available with the optional satellite navigation package.

# MAZDA CX-9 ACCESSORIES



mazda

## MAKE YOUR MAZDA EVEN MORE ENJOYABLE

Mazda CX-9 spoils you with style and luxury. And Mazda Genuine Accessories can make the journey more rewarding than ever. They let you add a personal touch and protect your investment. Plus they give you superb design, quality, fit and safety, all with the reassurance of a Mazda warranty. Mazda Genuine Accessories let you add even more Zoom-Zoom.



**Bike rack (wheel off)**  
Makes it easy to take your bike along for the ride.



**Bike rack (wheel on)**  
Bring your other wheels along without having to remove one.



**Bonnet protector (clear)**  
Guards against damage from stones and other debris.

**Front parking sensors**  
Makes parking easier by sounding a warning when your front bumper nears an obstacle.

[PLAY VIDEO](#)



**Kayak holder**  
Convenient carrying of a canoe, kayak or similar-sized watercraft.



**Boot lip protector**  
Protect your rear bumper and boot lip from scratches and scuffs during loading and unloading.



**Ski/snowboard carrier**  
It's simple to get geared up for the snow.



**Bonnet protector (smoke)**  
Smoke finish lends a distinctive look.

**Headlight protectors**  
Safeguards headlamp lenses against damage.



**Floor mats (front set)**  
Treat your feet and protect your carpet with these high quality, durable floor mats.



**Cargo liner/rear bumper protector**  
Protect your cargo area from messy cargo or pet hair. Liner & bumper protector sold separately.



**Collapsible sun screen**  
Keep your vehicle cool and protect the interior from the sun's harmful rays.



**Cargo tray**  
Strong with raised sides, this cargo tray offers maximum protection against dirt, scratches and spills. (Classic & Luxury only.)



**Cargo cover**  
Keep your valuable items out of sight. (Classic & Luxury only.)

[PLAY THE VEHICLE PROTECTION ITEMS VIDEO](#)



**Roof racks**  
Aerodynamically designed to reduce drag.  
Load capacity of up to 75kg.

**Slimline weathershields**  
Let fresh air in - keep the worst of the weather out.



**Reverse parking sensors**  
A warning tone helps prevent bumper damage  
by alerting you to obstacles.

[▶ PLAY VIDEO](#)

zoom-zoom-zoom



#### Rear seat entertainment unit

Keep passengers entertained via two high-quality 7 inch LCD screens with individual DVD players. Includes two wireless headphone sets. Fully compatible with active head restraint system.



#### Mazda retractable audio cable (3.5 mm male-to-male)

Allows portable audio devices to play via your vehicle's speakers, using the auxiliary jack.



#### Mazda Bluetooth® audio transmitter for iPod

Connect your iPod wirelessly and play your favourite tunes through the car's audio system. Includes 12 volt power adaptor for charging your iPod.

Available on vehicles fitted with Mazda accessory Bluetooth® hands-free with A2DP or factory fit Bluetooth®.



#### Bluetooth® hands-free kit with A2DP

Use the latest wireless technology to communicate safely and conveniently, and stream music from your Bluetooth® enabled mobile or MP3 player.

Hands-Free Profile (HFP) version 1.2. Please check mobile phone compatibility with your Mazda Dealer.

#### iPod adaptor

Control your iPod via steering wheel-mounted audio controls. iPod charges as you listen.



#### Tow bar

Designed specifically for Mazda CX9, with a 2,000kg (braked)\* capacity.

\*Subject to State or Territory regulations. Please refer to your Mazda Dealer for further information.



#### High specification alarm

Gives you added security and peace of mind.



#### Also available

- ▶ Floor mats (middle & rear).
- ▶ Chrome tow ball and cover.

To see the full range of Mazda Genuine Accessories, go to **[MAZDA.COM.AU](http://MAZDA.COM.AU)**