



SERIES 2

**SPORTAGE**  
+ 20 NEW OR ENHANCED FEATURES



The Power to Surprise



## An even more rewarding drive. Anywhere.

Sharp, stylish and sophisticated, the Sportage lacks nothing in the looks department. But while standout style is what catches your eye when looking for a new vehicle, performance and efficiency are what really counts. As you'd expect, the Sportage also delivers these in spades.

And while it exhibits all the capabilities of a true SUV, it also ticks all the creature comfort boxes with a spacious and luxurious interior that's packed with heaps of advanced features.

So whether you're cruising through the city or tackling a dirt track that's not even on the map, the new Sportage delivers an even more rewarding drive than ever before.



Platinum model shown





Platinum model shown

#### EXTERIOR DESIGN

## From every angle, nothing less than a real head turner

No matter which way you look at it, the Sportage features a stunning design that turns heads and will make friends and neighbours envious.

Combining bold lines with dynamic proportions, the Sportage is not just about looking good, it's also about living up to expectations. For example, while the striking radiator grille design and large headlamps accentuate its aggressive styling, the performance you'll experience behind the wheel is equally exhilarating.

From every angle, the Sportage is stylish and sporty. The sharp, dynamic angle of the windscreen sweeps seamlessly into the roofline with its high shoulders, while the narrow 'glasshouse', creates a sports car-like ratio between sheet metal and glass. And, as the final showstopper, the reverse-angled C-pillar adds to the athletic profile.





Ready for every road: 18" alloy wheels. (Platinum)

Never be short of a view: panoramic sunroof. (Platinum)

Impress and stand out: LED daytime running lights look great and make you more visible to other drivers. (SLi & Platinum)

Bold styling from front to back: Sportage rear view with reverse-angled C-pillar. (Platinum model shown)

Platinum model shown





#### DRIVER ERGONOMICS

## Control the road, enjoy the journey

When you're behind the wheel of an SUV you want a commanding driving position that gives you a sense of safety, security and control.

To help you experience this, the Sportage driver's cockpit has been designed around a sweeping dashboard and sporty three-gauge instrument panel with orange fluorescent needles. Sitting in the comfort of your six-way adjustable driver's seat, you have an at-a-glance view of all vital driving data, making it easier for you to keep your focus on the road ahead. Similarly, with steering wheel mounted controls enabling you to operate the audio system or set the cruise control, you can get the most enjoyment from your journey without having to take your hands off the wheel.

---

Steering wheel controls let you operate the audio system and your Bluetooth®-compatible devices\* as well as access the trip computer.

---

Choose between manual (Si) or automatic (SLi & Platinum) dual zone climate control air-conditioning.

---

Set the Sportage to your preferred speed with cruise control.

The Bluetooth® word mark is owned by Bluetooth SIG, Inc.  
\*Not all mobile phones will be compatible with the vehicles Bluetooth® system.

INTERIOR DESIGN & COMFORT

## Every bit as good as it looks

Sometimes good looks are just a front. But with the Sportage, what you see on the outside gets even better when you open the doors.

With its low ground clearance, entry is easy for all passengers, and once inside you'll notice how clever ergonomic design and engineering has created spacious seating for five adults. There's loads of head and legroom, while premium materials and beautiful upholstery - including leather\* combination (SLi) or pure leather\* (Platinum) - add an unexpected touch of luxury.

The SLi and Platinum variants offer a cooled glove box that will keep drinks and food fresh when you're heading out for the day, and in addition to the centre console's dual cup holders there are numerous storage spaces including front seat back pockets and map pockets in all the doors. The full-length panoramic glass sunroof (Platinum) adds to the sense of airy spaciousness and brightens the cabin even further.

See more and enjoy more with the panoramic sunroof. (Platinum)



On a cool night or frosty morning, heated front and rear seats increase everyone's driving comfort. (Platinum)



\*Leather trim includes some leather-like material on selected high impact surfaces.



Overseas Platinum model shown





DRIVING DYNAMICS

## All the ingredients for a fun and exciting drive

The new Kia Sportage combines SUV strength with self-assured road presence. It displays the agility and responsiveness of a car with sports credentials but also offers limousine comforts, courtesy of a refined suspension system. Just as smart, while the MacPherson front struts and rear multi-link design improves driving comfort it also frees up essential boot space.

Platinum model shown



## DRIVING DYNAMICS

# Smooth and precise handling on every surface

The Kia Sportage delivers the smooth precise handling you want when driving through the city or cruising along the highway, and provides the assured traction and control you need when road surfaces become more challenging.

This up-for-anything SUV is ready to tackle obstacles with strength and clever thinking. It comes equipped with a comprehensive range of active driving technologies to help you stay in command, from Anti-lock Braking System (ABS) to Electronic Stability Control (ESC).

And, if you choose Active All Wheel Drive (SLi & Platinum), the Sportage will automatically switch from 2WD to AWD when bad roads or poor weather conditions call for it, allowing you to tackle any kind of road surface or gradient with complete confidence.



The available AWD drive system (SLi & Platinum) uses electronic sensors to monitor road conditions and then, for enhanced traction and control, helps to distribute power to the appropriate wheels.



Electronic Stability Control (ESC) improves stability in extreme driving conditions.



Brake Assist System ensures that in the event of an emergency, the brakes are operating at full potential.



When descending a steep slope, Downhill Brake Control automatically maintains a steady 3 km/h crawl speed without you needing to step on the accelerator or brakes.



Hill Start Assist Control takes the sting out of starting on steep hills.



Si model shown





Platinum model shown

## ENVIRONMENT

# Heading toward a sustainable future

At Kia we recognise the impact that the automotive industry has on the global environment and are actively driving toward a green future.

Not only are we using state-of-the-art intelligent technologies to develop lightweight, fuel-efficient high-powered engines with reduced emissions, we are also investing heavily in sustainable development practices and environmentally friendly manufacturing processes.



CONNECTIVITY

## Putting technology to work for you

Driving is usually more relaxing when it's accompanied by your favourite tunes. To help you do that and keep the whole family relaxed and entertained, the Sportage includes a CD player with a USB and AUX port and six quality speakers that are strategically placed throughout the cabin. Standard Bluetooth® enables you to talk to friends with a minimum of fuss\* and steering wheel controls allow for easy, hands-free volume adjustment.

7" vivid colour touch screen satellite navigation system with SUNA™ live traffic updates (SLi with Navigation Pack and Platinum), will help get you to your destination faster.



Platinum models shown

The audio system with CD player and USB connectivity for iPod® (on selected iPod® models) and MP3 players.

Our biggest yet: the touch-screen 7" full-map navigation system. (SLi with Navigation Pack & Platinum)

Easily keep in touch and stream music from your compatible devices with hands-free Bluetooth®.#

The Bluetooth® word mark is owned by Bluetooth SIG, Inc. iPod® is a registered trademark of Apple Inc., registered in the US and other countries. \*Not all mobile phones will be compatible with the vehicles Bluetooth® system.



Audio system (Si model shown)



Satellite navigation system (Platinum model shown)



Si model shown





Si model shown

## ENGINES

# The exhilaration of more power with less fuel

When it comes to power and performance, smart thinking leaves a longer lasting impression than sheer grunt.

With a choice of a four cylinder 2.0 litre petrol engine or an ultra-modern 2.0 litre VGT diesel engine, the Sportage harnesses the power of innovative engineering to deliver more power, improved durability, enhanced refinement, lower fuel consumption and reduced CO<sub>2</sub> emissions.

This enhanced performance is achieved by a range of advanced technologies including a variable geometry turbocharger and second-generation Bosch fuel injection on diesel models, and CVVT (Continuous Variable Valve Timing) technology plus electronic fuel injection to boost performance on petrol engines.

Another bit of smart thinking is the smart key (Platinum) system. Instead of using a conventional car key, you only need to carry your smart key in your pocket or bag. The key recognises the vehicle when you approach your Sportage, so you can simply unlock it by pressing a button on the door handle. To start the engine, press the "Engine START STOP" button. (Platinum)

---

### 2.0 L PETROL

Max. Power 122 kW @ 6,200 rpm  
Max. Torque 197 Nm @ 4,600 rpm

---

### 2.0 L DIESEL

Max. Power 135 kW @ 4,000 rpm  
Max. Torque 392 Nm @ 1,800~2,500 rpm



## TRANSMISSIONS

# Engineered for an agile, sporty performance

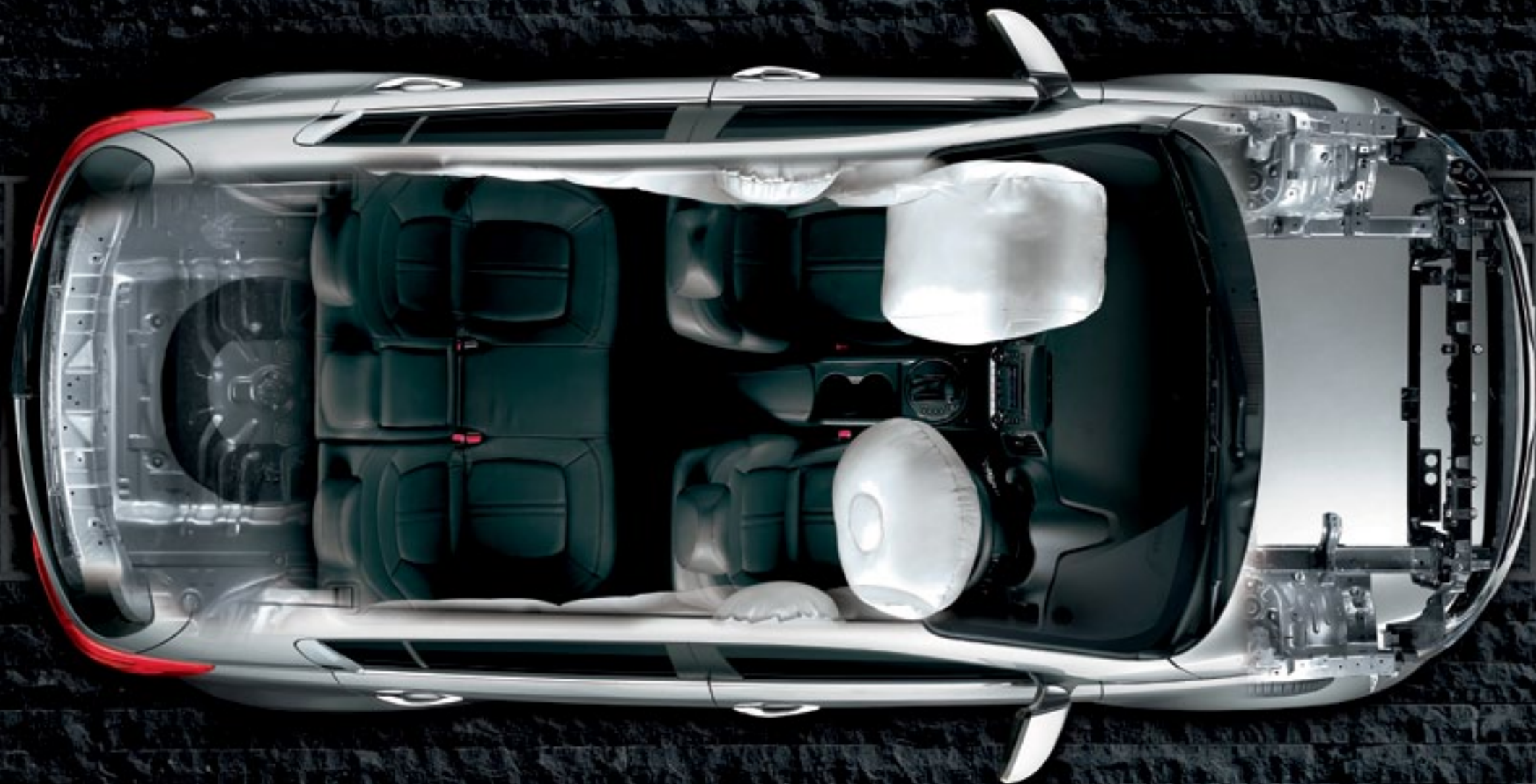
The diesel engine is equipped with a 6-speed automatic transmission as standard while the petrol model offers the choice of a 5-speed manual or 6-speed automatic gearbox for extra smooth gear changes. Manual transmission models feature a Shift Indicator as standard, showing you when to shift gear for greater efficiency.



Platinum model shown



Overseas model shown



#### SAFETY TECHNOLOGY

## Peace of mind every time you drive

At Kia, safety is one of our primary concerns. Our commitment to providing you and your passengers with high levels of safety begins on the design board and carries through to every aspect of engineering and build.

The Sportage is equipped with a range of advanced active and passive safety systems that are continually working away in the background to help you avoid and control dangerous situations. These include Electronic Stability Control (ESC) working to keep the wheels firmly glued to the ground, and Brake Assist System (BAS), which adds the correct brake force when required. At the same time, SUV strengths like AWD (SLi & Platinum) can provide additional vital assistance when the road gets tough. And for greater visibility and road safety, HID lights (Platinum) and LED daytime running lights are also available. (SLi & Platinum)

In the event that a collision is unavoidable, the robust nature of the Sportage gives you and your fellow passengers optimum protection. The Sportage comes with six airbags - dual front airbags, front side airbags, and curtain airbags with roll-over sensors.

The front seats are fitted with active headrests to help prevent whiplash, neck and head injuries during a rear impact. All seats feature buckle and anchor pre-tensioners.



Active Headrests: In a rear collision the front headrests move forwards and upwards to prevent whiplash injuries.



Electronic Stability Control improves stability in extreme driving conditions.



Brake Assist System ensures the brakes are operating at full potential.



Six airbags inflate when necessary.



EQUIPMENT

## More comfort and convenience

The new Kia Sportage is equipped for every occasion and any adventure. It not only looks the part, it feels good too, with a comfortable roomy interior that features an array of smart technologies to assist, entertain and protect you.

The standard rear-view camera on SLi & Platinum models ensure your Sportage stays beautiful and scratch free. When reversing, the rear-view mirror automatically displays guidelines to give a clear indication of the space left behind you.



Platinum model shown



Rear-view mirror with distance guidelines. (SLi model shown)



Electric power windows throughout. (SLi/Platinum model shown)



Front and rear heated seats. (Platinum)





VERSATILITY

## Loads of flexible space

Wherever you want to go, and whatever you need to carry, the Sportage offers plenty of cargo space and seating flexibility.

With all seats in place, the cargo area measures 800 x 1,178 x 785 mm. However with the 60:40 split rear seats folded flat, that expands to 1,353 litres of load capacity. The luggage area also features net hooks and a net for smaller items, and a useful storage compartment under the loading tray.

The boot cover keeps belongings away from prying eyes. (Platinum model shown)



## CABIN ERGONOMICS

# A place for everything you need

Whether you're travelling across the city or heading out into the countryside, the new Kia Sportage makes everyone on board feel at home, and ready for any adventure. Apart from comfortable seats - fitted with leather\* (Platinum) - there are plenty of smart ideas for everyone's convenience.

Throughout the cabin there are a myriad of handy storage options ensuring essential items are both safe and close at hand. For keys and other small belongings, there are compartments in the door panels, while the front armrest comes with a convenient storage box, and the floor console holds your drinks. With the cooling glove box (SLi & Platinum), you can also keep them chilled. The rear armrest also features cupholders, and to keep your sunnies safe and within reach, there's an overhead compartment that's easily accessed by the driver.



SLi model shown

\*Leather trim includes some leather-like material on selected high impact surfaces.



Store maps or drinks in the door compartment.



Glove box with cooling compartment. (SLi & Platinum)

Everything is close at hand with clever storage options throughout the cabin.





The Power to Surprise

Kia Motors Australia  
350 Parramatta Rd, Homebush, NSW, 2140

[www.kia.com.au](http://www.kia.com.au)

Kia is the newest and most exciting force of change in the automotive world and we are ready to change the way you feel and think about driving. More than just a promise, we are committed to making driving a true pleasure for customers across the globe. With youthful styling and the latest in advanced technologies, Kia cars are turning heads the world over with the power to surprise. From the Rio to the Sorento, Kia offers a full lineup of sedans, SUVs and MPVs that are not only practical but downright exhilarating to drive. Keep your eyes on Kia because our best has yet to come.

#### About Kia Motors Corporation

Kia Motors Corporation ([www.kia.com.au](http://www.kia.com.au)) -- a maker of quality vehicles for the young-at-heart -- was founded in 1944 and is Korea's oldest manufacturer of motor vehicles. As part of the Hyundai-Kia Automotive Group, Kia aims to become one of the world's premier automotive brands. Over 2 million vehicles a year are produced in 13 manufacturing and assembly operations in eight countries which are then sold and serviced through a network of distributors and dealers covering 172 countries. Kia today has over 44,000 employees worldwide and annual revenues of over US\$20 billion. It is the major sponsor of the Australian Tennis Open and an official automotive partner of FIFA -- the governing body of the FIFA World Cup. Kia Motors Corporation's brand slogan -- "The Power to Surprise" -- represents the company's global commitment to surpassing customer expectations through continuous automotive innovation.

Unlimited Kilometre 5 Year Warranty for private vehicles. 5 Year/130,000km warranty for commercial, fleet, government and rental vehicles. For full details, visit [www.kia.com.au](http://www.kia.com.au)

