

  
HYUNDAI | NEW THINKING.  
NEW POSSIBILITIES.

Accent



## HYUNDAI. NEW THINKING. NEW POSSIBILITIES.

At Hyundai, we understand that life is about continual change. Our progress as a company isn't measured by our actions in the past but by how we respond to our environment and listen to our customers.

Our focus today is on producing cars that embody quality, variety, innovation and individuality – cars that are underpinned by 5-star quality in design, build, features, accessories and safety.

And as a testament to our worldwide commitment to quality, Hyundai is now one of the world's fastest growing automotive brands. Our aim is to challenge and question the way things are done to create bigger new ideas and better quality solutions to enrich our customers' life experiences. Only by re-imagining what tomorrow's world will bring, can we meet our customers' needs now and into the future. We invite you to join us on our journey.

## A NEW BENCHMARK IN SERVICE AND SUPPORT

Your Accent ownership is supported by all the benefits of the Hyundai iCare program, which demonstrates our commitment to back every vehicle we build and to make Hyundai ownership an enjoyable, worry-free experience.

iCare includes:

- The peace-of-mind of a 5 year unlimited kilometre warranty\*
- Hyundai iCare Lifetime Service Plan,# to protect your car with genuine servicing
- The confidence of Hyundai Roadside Support Plan for up to 10 years^
- The convenience and exclusive benefits of myHyundai
- The support of our Customer Care Centre.  
Feel free to call 1800 186 306
- The assurance of a complimentary 1,500km vehicle inspection
- The satisfaction of having your vehicle serviced by qualified Hyundai factory-trained technicians using only Hyundai Genuine Parts

Find out more about all Hyundai iCare plans and offers, including terms and conditions, by visiting [www.hyundai.com.au/icareterms](http://www.hyundai.com.au/icareterms)



Terms, conditions and exclusions apply to Lifetime Service Plan, Warranty and iCare offers. Visit [www.hyundai.com.au/icareterms](http://www.hyundai.com.au/icareterms) for full details.





# Discover the New Motion.

The Accent is made for a generation who are clearly on the move. With a progressive and extremely stylish look, the streamlined profiles and sculpted grooves of the sporty hatch and the sophisticated sedan create an immediate and powerful impression.

Designed for a life that's always in motion, the Accent is bigger than its predecessor and combines dynamic performance and economy with the highest levels of comfort and safety.

The ultra-modern ergonomic and roomy interior delivers exceptional creature comforts, while every aspect of your driving experience is enriched through innovation and the use of smart technology.

Just as importantly, with the latest active and passive safety technologies constantly at work to help you maintain control and to protect you in the event of an accident, the Accent has achieved a 5-star ANCAP rating, Australia's highest possible occupant safety rating.

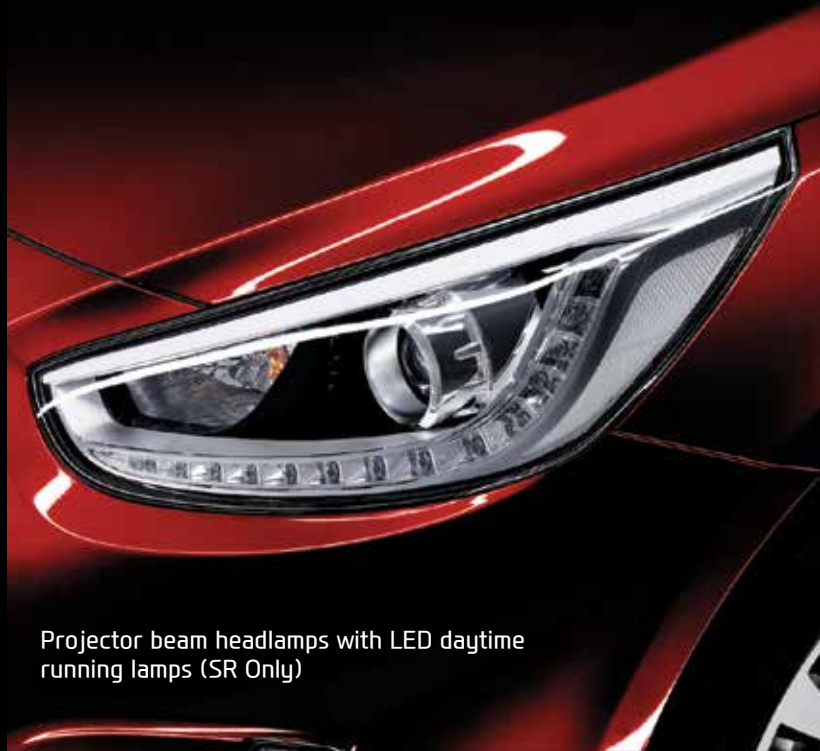
In short, the Accent is everything you could ask for in a small, yet highly energetic car. Put yourself in the driver's seat and get ready to have the style, comfort and technology of the Accent set your world in motion.

# Muscular and athletic, sleek and stylish.

The Accent has been designed to make an immediate – and very powerful – impression.

Its streamlined and aerodynamic profile is based on Hyundai's 'fluidic sculpture' design language. The sleek dynamic lines and deep grooves create a sporty futuristic look with a sense of constant motion.

The strongly defined wheel arches and an assertive stance combine with its distinctive hexagonal grille and aggressive headlamps to give the Accent an eye-catching and commanding road presence.



Projector beam headlamps with LED daytime running lamps (SR Only)

## The sportiness of a **hatch**

Fluidic sculpture lines deliver a robust and sporty appearance that's strengthened further by aesthetically pleasing vertical combination lights. An aerodynamically designed spoiler is standard on the SR.



Accent SR Hatch in Veloster Red shown



Fog Lamp (SR Only)



Wing mirrors with indicator repeaters

## The sophistication of a **sedan**

With its increased length, low roofline and sloping rear window line, the Accent sedan has a stylish and sophisticated coupe-like appearance that stands out from its competitors.



Accent Active Sedan in Dazzling Blue shown

# All the safety you'd expect from a big car.

At Hyundai, we believe maximum safety should come as standard. That's why we designed the Accent to achieve Australia's highest possible safety rating – 5-Star ANCAP – thanks to an array of active and passive safety features. So the only thing you need do is sit back and enjoy the ride.

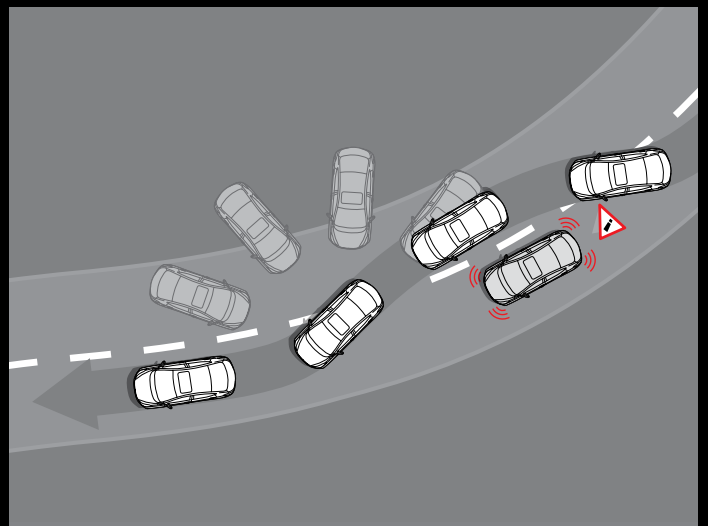


Reinforced high-tensile strength steel monocoque

## Built strong to protect

To reinforce the safety of our vehicles, and your protection in the event of an accident, all of our vehicles built in Korea, have high-tensile strength steel applied to safety-critical areas and are produced by Hyundai from iron ore sourced from Australia and Brazil. The steel is so hard it must first be heated to 900C before stamping. The chassis has been built tough and includes a Collision Load Dispersion mechanism that, in the event of an impact, distributes the force in three ways to maintain the integrity of the cabin. Other reinforcements such as dual rear-door side-impact beams provide even further levels of protection.

Across all grades, six airbags are standard – driver and front passenger side thorax airbags as well as curtain airbags for front and rear seat passengers. To help reduce the possibility of whiplash injury, height adjustable head restraints are included for all occupants.



VSM (Vehicle Stability Management)

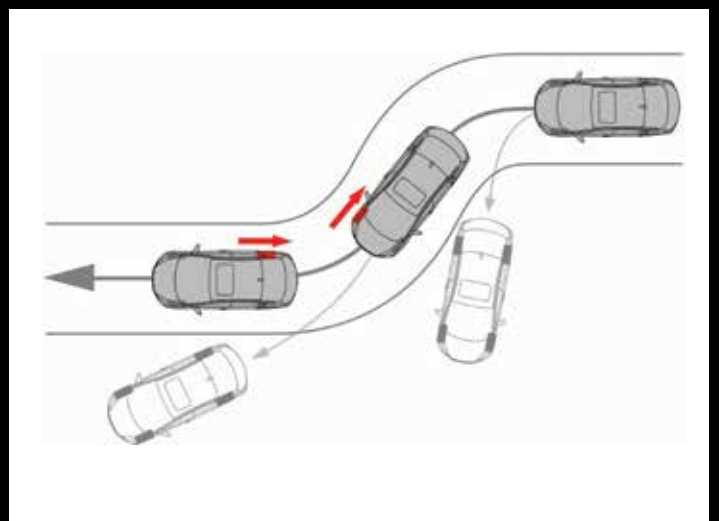


Overseas model interior shown

## Loaded with Active Safety Technology

The Accent also boasts a comprehensive range of advanced active safety technologies that are constantly working behind the scenes, ready to spring into action and assist you during a difficult driving situation. The Electronic Stability Control (ESC) with Traction Control System (TCS) senses a loss of wheel grip (such as when skidding) and then applies individual wheel braking, together with engine and transmission adjustments, to help you get the vehicle back on its intended course. Likewise, in slippery conditions or sudden cornering scenarios, the state-of-the-art Vehicle Stability Management (VSM) system helps maintain control of the vehicle by applying steering assistance, to help guide you to the correct steering position.

The Accent's 4-wheel disc brakes (standard across all grades) team with the Anti-lock Braking System (ABS) and Electronic Brakeforce Distribution (EBD) to automatically vary the amount of brakeforce applied to each of the vehicle's brakes depending on road conditions, speed and load.



ESC incorporating TCS



# A smart, feature-packed interior.

The striking good looks and energetic styling that make the Accent such a head-turner from the outside, continue inside with a modern and ergonomic interior that's generously packed with features and comforts.

The symmetrical Y-shaped upper dash is drawn with sweeping lines that flow downward toward the centre stack and shift lever, creating a focus for the intuitive 5" touch screen<sup>#</sup> multimedia system that provides radio, CD and MP3 functionality with album art display and media ripping. You'll also have all the connectivity you want with iPod<sup>®</sup>, USB, AUX inputs whilst Bluetooth<sup>®</sup> connectivity<sup>^</sup> allows hands free calling and audio streaming.

Every control and button has been positioned for easy use and navigation, so you can focus on driving but still get the most fun out of every trip.

iPod<sup>®</sup> is a registered trademark of Apple Inc., registered in the US and other countries. Bluetooth<sup>®</sup> is a registered trademark of Bluetooth SIG, Inc.  
<sup>^</sup>Please check your Bluetooth<sup>®</sup> device's capabilities to ensure compatibility.





Overseas model interior shown





**ACCENT SR**

# Driven by fun.

The Accent SR takes everything you love about the Accent Hatch, and turns it up a notch. More style, more fun and 14% more power – delivered by a 1.6 GDI petrol engine, paired with 6-speed transmissions. Specifically tuned for Australian driving conditions, the Accent SR delivers better handling, and thus a more responsive and exciting driving experience all round.

Best of all, the SR has the looks to match its performance. With LED positioning lamps, 16" machined face sports alloy wheels and an accented rear spoiler, it brings a distinctive sporty style to the streets. Are you ready for some fun?

# Details that make the difference.

From its stylish exterior through to its hi-tech interior, the Accent is kitted out with all the latest technology and high quality features.



Accent SR Hatch in Veloster Red



Accent Active Hatch in Vitamin C



Accent Active Sedan in Sleek Silver



### Fog Lamps

Distinctively styled fog lamps are integrated into the side character line to provide additional illumination in low visibility conditions. (SR only)



### Side Mirrors with LED Indicator Repeaters

Large side view mirrors with LED side repeaters enhance safety by providing greater visibility of your intentions when turning or changing lanes.



### Sunglass Holder

A convenient overhead storage binacle helps keep your sunglasses safe from being lost or scratched.



### Keyless Entry

Lock and unlock your Accent without taking the key from your pocket – perfect for when your hands are full.



### iPod®, Aux & USB Support

Everything the Accent driver will need to stay perfectly tuned and fully connected while on the road.



### Steering Wheel Controls

All your favourite controls are now at your fingertips – including audio features – so you can enjoy total convenience without having to take your hands off the wheel.



### Be connected

Enjoy hassle-free access to all your devices via a 5" multimedia touchscreen – offering you full connectivity<sup>^</sup> with your phone, iPod® and Bluetooth® hands-free calling.



### Trip Computer

An onboard computer gives you useful driving information such as journey time and distance to empty. It's also where you'll find the ECO Drive indicator helping you drive in a more fuel-efficient, economical way.



### Safety Power Window

Front and rear power windows offer enhanced convenience, while the driver's-side also features a one-touch auto up/down function. The power window switches are illuminated so you can easily find them, while safety sensors on the driver's window automatically reverse the window's direction when they sense an obstacle in the way.

iPod® is a registered trademark of Apple Inc., registered in the US and other countries. Bluetooth® is a registered trademark of Bluetooth SIG, Inc. ^Please check your Bluetooth® device's capabilities to ensure compatibility.

# Colour the way you move.

With a wide and vivid colour palette to choose from, the Accent makes a smart, sophisticated and contemporary statement on the road.



Accent Active Sedan in Veloster Red shown

## Exterior Colour



Crystal White  
(PGJ) Solid



Sleek Silver<sup>^</sup>  
(RHM) Metallic



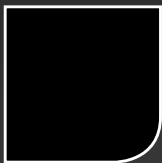
Sonic Silver (SR only)  
(N9S) Metallic



Dazzling Blue<sup>^</sup>  
(ZD6) Pearl



Sunflower  
(SYY) Solid



Phantom Black  
(MZH) Pearl

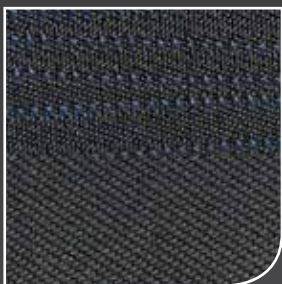


Veloster Red  
(P9R) Metallic



Vitamin C<sup>^</sup>  
(R9A) Pearl

## Interior Colour



Woven cloth



Machine faced 16" Alloy Wheel  
(SR only)

14" Steel Wheel  
(Active only)

<sup>^</sup>Available on Active model only.

# HYUNDAI GENUINE ACCESSORIES

Hyundai Genuine Accessories can enhance your driving pleasure and ownership pride by adding extra ease and enjoyment to your lifestyle pursuits.

All Hyundai Genuine Accessories are backed by a 5 year warranty if purchased at the time of a new Hyundai vehicle and fitted by an authorised Hyundai dealer.†

Hyundai Genuine Accessories	Hatch		Sedan
	Active	SR	Active
<b>Technology</b>			
Auxiliary Cable	•	•	•
iPad® Holder <sup>1</sup>	•	•	•
<b>Interior</b>			
Tailored Carpet Floor Mats (set of 4)	•	•	•
Dash Mat	•	•	•
Cargo Liner	•	•	•
Fabric Rear Bumper Protector	•	•	•
Portable Cooler <sup>2</sup> - (12V, 15L)	•	•	•
Cargo Organiser	•	•	•
<b>Exterior</b>			
Headlight Protectors (set of 2)	•	•	•
Bonnet Protector	•	•	•
Tinted Stylevisors (set of 4)	•	•	•
Front Mudflaps <sup>3</sup> (set of 2)	•	•	•
Rear Mudflaps <sup>3</sup> (set of 2)	•	•	•
Towbar, Towball and Trailer Wiring Harness <sup>4</sup>	•	•	-
<b>Styling</b>			
14" Alloy Wheels (sold separately, tyres not incl.)	•	-	•
16" Alloy Wheels (sold separately, tyres not incl.)	•	-	•
Boot Lid Spoiler	-	-	•
Interior Lighting	•	•	•
<b>Roof Racks &amp; Lifestyle</b>			
Whispbar™ Quiet Roof Racks <sup>5</sup>	•	•	•
Roof Mounted Kayak Holder	•	•	•
Ski & Snowboard Carrier <sup>7</sup>	•	•	•
Surfboard Carrier <sup>7</sup>	•	•	•
Roof Mounted Bike Carrier <sup>7</sup>	•	•	•
Thule® Bike Carrier (wheel on) <sup>7</sup>	•	•	•
<b>Safety</b>			
First Aid Kit (4 Pockets)	•	•	•
Rear Park Assist (4 head) <sup>6</sup>	•	•	•



### Cargo Liner

- Protects your boot
- High Quality



### Boot Lid Spoiler

- Sleek and Sporty
- Contoured to your car



### Towbar, Towball & Trailer Wiring Harness<sup>4</sup>

- Engineered to suit Australian conditions
- Trouble-free towing



### Tailored Carpet Floor Mats (set of 4)

- Contoured and Colourfast
- Driver's side locating clip



### Tinted Stylevisors (set of 4)

- Reduces fogging without you getting wet
- Slimline and UV-resistant



### Front & Rear Mudflaps<sup>3</sup> (set of 2)

- Helps protect paintwork
- Tough wearing



### Headlight Protectors (set of 2)

- UV-resistant
- Durable



### Rear Park Assist<sup>6</sup>

- Automatic activation
- Four Sensor System



### Surfboard Carrier<sup>7</sup>

- Holds up to 2 boards
- Secure



### Bike Carrier<sup>7</sup>

- Roof Mounted
- Secure



### Whispbar™ Quiet Roof Racks<sup>5</sup>

- Tested to Australian Standards
- Strong and Secure



### Ski & Snowboard Carrier<sup>7</sup>

- Secured by a double lock function
- Push-button release for easy access

1. The iPad® holder has been designed to hold iPad® 1, 2 or 3 securely. To ensure occupants are protected in the event of a collision, the screen protector must be fitted to the iPad® when in use. iPad® not included.

2. Only suitable for use with retractable seatbelt.

3. Please note that Mudflaps cannot be fitted in conjunction with a full body kit or rear skirt.

4. Maximum ball download 50kg. Towing capacity 1.6L Petrol = 900kg braked, Towing capacity 1.6L Diesel Auto = 850kg braked, Towing capacity 1.6L Diesel Manual = 900kg braked; 450kg unbraked for all models. Towbar capacity subject to regulatory requirements, towbar design, vehicle design and towing equipment limitations.

5. Load capacity = 75kg distributed evenly over 2 bars.

6. Park Assist is designed as driver assist aid only and should not be used as a substitute for skilled driving and safe parking practices. While the Park Assist Sensors monitor objects on approach, there may be occasions where blind spots affect the sensitivity of the sensors and as a result, the area into which the vehicle is heading must be visually monitored by the driver at all times while parking.

7. Surfboard, bike, ski and snowboard not included.

† All Hyundai Genuine Accessories are subject to warranty conditions. See your nearest Hyundai Dealer or visit our website at [www.hyundai.com.au](http://www.hyundai.com.au) for full warranty terms and usage recommendations. Accessories pictured are all sold separately at an additional cost.



Genuine Accessories



The Hyundai Accent Active Hatch model featured above in Sleek Silver is accessorised with Hyundai Genuine Whisperbar™ Quiet Roof Racks<sup>5</sup>, Surfboard Carrier, Tinted Stylevisors (set of 4), Bonnet Protector, Headlight Protectors (set of 2), Towbar, Towball and Trailer Wiring Harness<sup>4</sup>, Front Mudflaps<sup>3</sup>, Rear Mudflaps<sup>3</sup>, 16" Alloy Wheels and Rear Park Assist (4 head)<sup>6</sup>. All sold separately at an additional cost. Surfboard not included.

Hyundai Motor Company (HMC) and the Hyundai Motor Company Australia (HMCA) each reserve the right to alter vehicle specifications and equipment levels without notice.

**iCare Terms (from inside cover) \*5 year/unlimited km warranty:** Applies to new passenger vehicles used for private/domestic purposes. Excludes vehicles used at any time for "commercial application" as defined in the vehicle warranty policy, for which a 5 year/130,000km (whichever occurs first) warranty applies. Refer to full warranty terms & conditions for details and exclusions. **\*Lifetime Service Plan:** For the benefit of Hyundai owners, Hyundai provides online quotes, which specify the maximum price applicable for a vehicle's next scheduled maintenance service at a participating authorised Hyundai dealer and using genuine Hyundai parts (where required). Online quotes are available at [www.hyundai.com.au](http://www.hyundai.com.au), apply for a stated effective period only and may change after that effective period without notice. Standard scheduled maintenance services are of limited scope. The benefit of online quotes is available for all Hyundai's, for their lifetime. **\*Roadside Support Plan:** Complimentary 12 months Roadside Support when you purchase a new Hyundai passenger vehicle (excluding rental buyers). Further Roadside Support extensions are available, each for 12 months from the date of a scheduled maintenance service at a participating authorised Hyundai dealer (unless vehicle is more than 108 months (9 years) from the original new car sale date, in which case entitlement to Roadside Support ends when vehicle reaches 120 months (10 years) from original new car sale date). **Terms, conditions & exclusions apply to Lifetime Service Plan, Warranty and iCare offers. Visit [www.hyundai.com.au/icareterms](http://www.hyundai.com.au/icareterms) for full details.**



Engine	Kappa 1.4 MPI Petrol (Active)		Gamma 1.6 GDI Petrol (SR)	
Configuration	Transverse front engine, front wheel drive			
Capacity	1.4 litres (1,388 cc)		1.6 litres (1,591 cc)	
Number of cylinders	4 in-line			
Valve system	16 valve dual overhead cam (DOHC) with Dual Continuously Variable Valve Timing (CVT)		16 valve dual overhead cam (DOHC) with Dual Continuously Variable Valve Timing (CVT)	
Maximum power	74 kW @ 6,000 RPM		103 kW @ 6,300 RPM	
Maximum torque	133 Nm @ 3,500 RPM		167 Nm @ 4,850 RPM	
Fuel system / Fuel required	Multi-Point Fuel Injection (MPI) / 91 RON ULP		Gasoline Direct Injection (GDI) / 91 RON ULP	
Bore x Stroke	72.0 mm x 84.0 mm		77.0 mm x 85.46 mm	
Compression ratio	10.5:1		11.0:1	
Transmission	<b>Kappa 1.4 MPI Petrol (Active)</b>		<b>Gamma 1.6 GDI Petrol (SR)</b>	
Manual	6 speed manual transmission		6 speed automatic, electronically controlled with lock up torque converter	
CVT	Continuously variable transmission		—	
Auto	—		—	
<b>Gear ratio</b>	<b>Manual</b>	<b>CVT</b>	<b>Manual</b>	<b>Automatic</b>
Forward minimum	—	0.545	—	—
Forward maximum	—	4.335	—	—
1st	3.769	—	3.615	4.400
2nd	2.045	—	1.955	2.726
3rd	1.370	—	1.286	1.841
4th	1.036	—	1.036	1.392
5th	0.893	—	0.899	1.000
6th	0.774	—	0.703	0.774
Reverse	3.700	3.697	3.700	3.440
Final	4.059	3.565	3.893	3.065
<b>Suspension</b>	MacPherson Strut			
Front	Coupled torsion beam axle with high performance mono-tube rear dampers			
Rear	—			
<b>Power Steering</b>	MPS (Motor Driven Power Steering) rack and pinion			
Type	Tilt-adjustable			
Column	10.4 metres			
Minimum turning diameter between kerbs	10.4 metres			
Number of steering wheel turns lock to lock	2.90			
<b>Brakes</b>	—			
General	Dual-diagonal, split disc, power assisted with Electronic Brakeforce Distribution (EBD) and Brake Assist System (BAS)			
Front	256 mm x 22 mm ventilated disc			
Rear	262 mm x 10 mm solid disc			
<b>Dimensions</b>	<b>Hatch</b>		<b>Sedan</b>	
<b>Exterior</b>	—			
Length	4,115 mm		4,370 mm	
Width	1,700 mm			
Height	1,450 mm			
Wheelbase	2,570 mm			
Minimum ground clearance	140 mm			
Wheel track - front / rear	1,507 / 1,511 mm (Active) 1,489 / 1,495 mm (SR)		820 / 980 mm	
Overhang - front / rear	820 / 725 mm		—	
<b>Interior</b>	—			
Head room - front / rear	1,014 / 959 mm		1,014 / 946 mm	
Leg room - front / rear	1,062 / 896 mm		—	
Shoulder room - front / rear	1,364 / 1,356 mm		—	
Hip room - front / rear	1,304 / 1,198 mm		—	
Car go volume - Side/VDK	600 / 370 litres		389 / 485 litres	
<b>Weights</b>	<b>Kappa 1.4 MPI Petrol (Active)</b>		<b>Gamma 1.6 GDI Petrol (SR)</b>	
<b>Kerb/GVM</b>	<b>Hatch</b>	<b>Sedan</b>	<b>Hatch</b>	<b>Hatch</b>
Manual	1,095 - 1,120 / 1,560 kg	1,090 - 1,120 / 1,560 kg	1,070 - 1,150 / 1,610 kg	—
Automatic / CVT	1,090 - 1,140 / 1,570 kg	1,090 - 1,140 / 1,570 kg	1,090 - 1,170 / 1,610 kg	—
<b>Fuel Consumption*</b>	<b>Kappa 1.4 MPI Petrol (Active)</b>		<b>Gamma 1.6 GDI Petrol (SR)</b>	
Manual	—	—	—	—
CVT	—	—	—	—
Automatic	—	—	—	—
Combined (L/100 km)	5.7	6.2	6.1	6.6
Urban (L/100 km)	7.4	7.7	7.9	9.2
Extra (L/100 km)	4.7	5.3	5.0	5.1
CO2 (Combined g/km)	136	146	145	158
Fuel tank capacity	43 litres			

Wheels and Tyres	Active	SR
14" x 5.5J steelwheels with hub caps and 175/70 R14 tyres	—	—
16" x 6.0J machined face alloy wheels with 195/50 R16 tyres	—	●
Fuel size matching spare wheel	●	●
<b>Active Safety</b>	<b>Active</b>	<b>SR</b>
<b>Electronic Stability Control (ESC) including:</b>	●	●
Traction Control System (TCS)	●	●
Anti-lock Braking System (ABS)	●	●
Electronic Brakeforce Distribution (EBD)	●	●
Brake Assist System (BAS)	●	●
Vehicle Stability Management (VSM)	●	●
<b>Features</b>	●	●
Sensibel warning lights & chimes (fall seats)	●	●
Day / night rear view mirror	●	●
LED daytime running lamps (DRL)	—	●
Automatic dusk sensing headlamps with escort and welcome function	—	●
<b>Passive Safety</b>	<b>Active</b>	<b>SR</b>
<b>Airbags</b>	●	●
Driver and front passenger airbags	●	●
Driver and front passenger side (thorax) airbags	●	●
Front and rear passenger side curtain airbags	●	●
<b>Body</b>	●	●
Child safety door lock on rear doors	●	●
<b>Seat belts</b>	●	●
Predetoners and height adjustable front seat belts	●	●
3 point retractable seat belts for all occupants	●	●
Seat belt reminder for all occupants	●	●
<b>Seating</b>	●	●
3 child seat anchor point brackets in rear	●	●
ISO Fix (rear outboard seats)	●	●
Height adjustable head restraints for all occupants	●	●
<b>Security</b>	<b>Active</b>	<b>SR</b>
Central locking	●	●
Engine immobiliser	●	●
Keyless entry	●	●
Hyundai Active Locking Operation (HALO)* including speed sensing auto door locking	●	●
<b>Occupant Comfort &amp; Convenience</b>	<b>Active</b>	<b>SR</b>
Premium steering wheel and gear knob	—	●
Tilt adjustable steering wheel	—	●
Cruise control with steering wheel mounted remote controls	—	●
Rear window wiper and washer (Hatchback variants only)	●	●
Trip computer with instant and average fuel consumption, distance to empty, trip distance, average speed and elapsed time readout	●	●
Front sunvisors with vanity mirrors	●	●
Electric adjustable side mirrors	●	●
3 foot grip handles and 1 coat hook	●	●
One touch triple turn signal	●	●
Front and rear power windows	●	●
One touch window up and down function on driver's window incorporating anti-pinching safety feature	●	●
Height adjustable driver's seat cushion	●	●
Ambient temperature and digital clock display	●	●
<b>Sound System</b>	<b>Active</b>	<b>SR</b>
5" touch-screen audio system with CD player, MP3 capability, 6 speakers and media ripping / storage capability	●	●
Steering wheel mounted audio remote controls	●	●
Bluetooth** connecting (handsfree phone operation and audio streaming)	●	●
AUX / USB audio input with digital iPod** compatibility	●	●
<b>Interior / Ventilation</b>	<b>Active</b>	<b>SR</b>
Manual air conditioning	●	●
Rear heating ducts	●	●

Exterior Styling	Active	SR
Body coloured exterior door handles	●	●
Body coloured side mirrors	●	●
Body coloured front and rear bumpers	●	●
Chrome radiator grille insert	●	●
Rear mounted rear spoiler	—	●
<b>Interior Styling</b>	<b>Active</b>	<b>SR</b>
Cloth seats	●	●
Cloth inserts in door trims	●	●
Metallic painted centre fascia and transmission gear lever surrounds	●	●
Metallic painted steering wheel and door trim inserts	●	●
Metallic painted interior door handles	●	●
Alloy look interior door handles	—	●
<b>Lighting</b>	<b>Active</b>	<b>SR</b>
<b>Exterior Lighting</b>	●	●
LED high mount stop lamp (HMSL)	●	●
LED side repeater integrated into side mirrors	●	●
LED positioning lamps	—	●
Front fog lamps	—	●
Projector beam headlamps	—	●
<b>Interior Lighting</b>	●	●
Interior light fade-out delay	●	●
Individual driver and front passenger map lamps in overhead console	●	●
Luggage lamp	●	●
Centre room lamp	●	●
<b>Storage Solutions</b>	<b>Active</b>	<b>SR</b>
60 / 80 split folding rear seat	●	●
Front passenger seat back pocket	●	●
Front and rear door pockets with bottle bulges	●	●
Luggage net	—	●
Centre floor console with storage recess, cupholders and removable ashtray	●	—
Drive centre floor console with storage compartment, cupholders, and removable ashtray	—	●
Front centre armrest with sliding function	●	●
Ticket holder on driver's sunvisor	●	●
Retractable sunglasses compartment	●	●

\*Source ADR 81/02. Fuel consumptions will vary on a combination of driving habits and vehicle conditions. \*Feature can be independently deactivated at an authorised Hyundai Dealer. \*\*Pop\*\* is a registered trademark of Apple Inc., registered in the US and other countries. Bluetooth\*\* is a registered trademark of Bluetooth SIG, Inc. \*\*Please check your Bluetooth\*\* device's capabilities to ensure compatibility.



Hyundai Motor Company Australia Pty Ltd 394 Lane Cove Road, Macquarie Park, NSW Australia 2113

Hyundai Motor Company (HMC) and the Hyundai Motor Company Australia (HMCA) each reserve the right to alter vehicle specifications and equipment levels without notice. Some equipment featured on the cars in this brochure may not be available in Australia or may be optional. To the extent permitted by the law, neither HMC nor HMCA shall be liable to any person as a result of reliance on the content of this brochure. Please consult your Hyundai dealer for the latest specifications, equipment levels, options, prices, colours and vehicle availability. Metallic and mica paint are optional extras. Note: Information in this brochure is current as at 09/09/2015. HMCA9180. Part No. RB0915B



Like us at  
[facebook.com/hyundaiaustralia](https://facebook.com/hyundaiaustralia)



Follow us at  
[twitter.com/hyundaiaus](https://twitter.com/hyundaiaus)



Follow us at  
[instagram.com/hyundaiaus](https://instagram.com/hyundaiaus)