

*MAZDA CX-3*



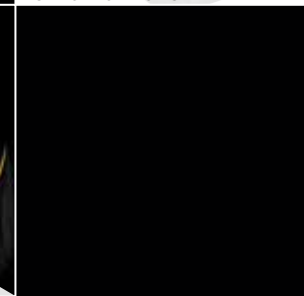
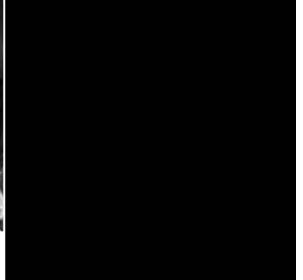
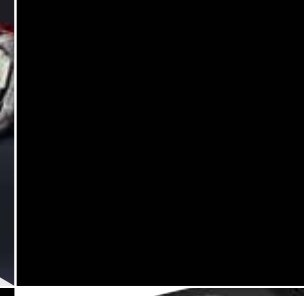
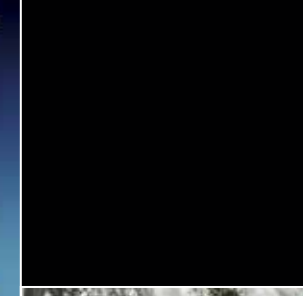
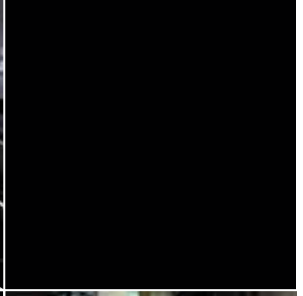
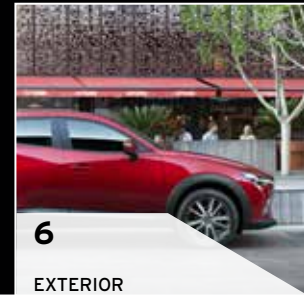
*zoom-zoom*  
*zoom-zoom*  
*zoom-zoom*

*IMAGINATION DRIVES US*

# IMAGINATION DRIVES US



Imagination is the world's most valuable resource. It's our window to the future, because if we can imagine it, we can create it. Mazda is built on a foundation of imagination and ingenuity. It's the fuel behind all we create and achieve. It has given us SKYACTIV TECHNOLOGY, 'KODO – Soul of Motion' design and countless successes that once existed only in someone's imagination. These pages show how imagination is an integral part of our innovative cars.



## FIRST-EVER MAZDA CX-3 MOVE LIKE NEVER BEFORE



There's never been an SUV that can move you like this. For the very first time, new generation Mazda thinking combines with enhanced capability and city-friendly size. Natural agility comes from SKYACTIV TECHNOLOGY, along with outstanding fuel economy in either petrol or diesel. MZD Connect brings your online world along for the ride while i-ACTIVSENSE integrates intelligent safety.

First-Ever Mazda CX-3 comes in front or all-wheel drive. From in-town action to exploring what's beyond, it gives you the looks and versatility to move in a whole new way.

Akari in Soul Red Metallic.

## A STYLE THAT STANDS ABOVE



You instantly see it's something out of the ordinary. Mazda CX-3 is the creation of 'KODO – Soul of Motion' design. KODO is inspired by the instant energy bursts into motion. It's the powerful grace of an animal pouncing, or a human leaping into action.

Balancing athletic presence, streamlined simplicity and elegant detail, Mazda CX-3 brings rare imagination to the small SUV.

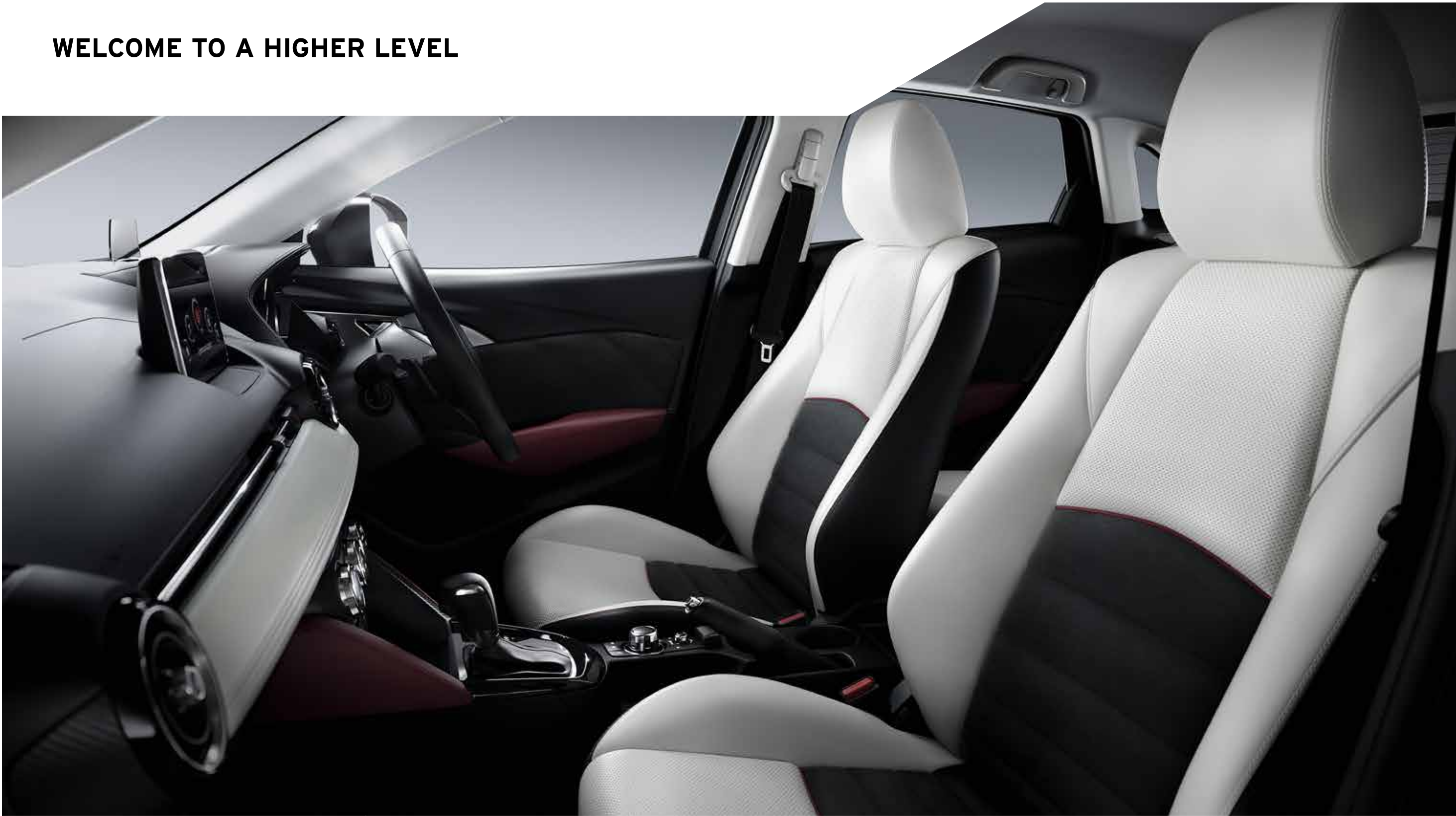
魂動

KODO : SOUL of MOTION

Akari in Soul Red Metallic.



# WELCOME TO A HIGHER LEVEL



It's not just the dynamic exterior that impresses. Mazda CX-3's cabin is crafted to feel special, and equipped to give you an edge. Controls and readouts are carefully placed to help your focus stay on the road. Clean lines wrap around you forming a fresh, modern space. Each model blends inviting trim and materials, using metallic highlights and detail to elegant effect.

You're on another level, and linked to your online world. Select models feature MZD Connect, which hooks up to your contacts, music, social networks and more - all through a central touch screen.

Akari in pure white leather/black suede trim.<sup>1</sup>

## THE FREEDOM TO REALLY MOVE



It lets you do whatever you want to do, and it moves like only a Mazda can. Quick-steering, spirited and confident, Mazda CX-3 is liberated by lightweight SKYACTIV TECHNOLOGY. Responsive power is enjoyed with exceptional fuel economy, no matter which form you choose; punchy 2.0 litre petrol, or keenly muscular 1.5 litre turbo diesel. Transmissions are sports-minded and refined in either automatic or manual.

You'll be nimble and smooth-riding as you carve through the city, or head for what's beyond. Mazda CX-3 offers front-wheel drive, or intelligent i-ACTIV AWD (all-wheel drive) that monitors and even predicts road conditions for maximum grip and performance. So you can take the fun just about anywhere you can imagine.

Akari in Soul Red Metallic.



**SKYACTIV-G  
2.0L PETROL ENGINE**

A new generation internal combustion engine generates more performance from less fuel. Precise multi-hole direct injection minimises fuel use. A unique piston design improves combustion to boost power and lower emissions. Reduced friction liberates extra power, while a 4-2-1 exhaust layout lifts efficiency. The 4-cylinder engine delivers a sporty 109kW of power and 192Nm of torque, using as little as 6.1 litres of fuel every 100km<sup>2</sup> (combined).



**SKYACTIV-D  
1.5L DIESEL ENGINE**

A far lower compression ratio than conventional diesels enables lighter construction. With reduced friction and inertia, sporty power flows right up to 5,500rpm. High-dispersion fuel injectors and variable valve lift optimise economy. Specially developed stepped pistons help the 4-cylinder engine produce 77kW and a muscular 270Nm of torque, using as little as 4.8 litres of fuel per 100km<sup>2</sup> (combined). A light, ultra-compact turbocharger boosts efficiency to help SKYACTIV-D meet Euro stage V emissions standards.



**i-ACTIV AWD INTELLIGENT  
ALL-WHEEL DRIVE SYSTEM**

The Mazda CX-3 offers an intelligent on-demand system that actively distributes torque under electronic control. i-ACTIV AWD sources information from 27 different sensors to predict changes in driving conditions, including road surface, weather, driver intentions and more. As a result it offers maximum grip and vehicle control just when you need it. All of this while achieving excellent fuel economy. Available on select models.



**SKYACTIV-DRIVE  
AUTOMATIC TRANSMISSION  
& SKYACTIV-MT MANUAL  
TRANSMISSION**

The 6-speed automatic transmission combines the best aspects of conventional automatic, continuously variable and dual clutch transmissions. It connects directly with the engine across a far wider range than other automatics for increased fuel economy and more direct power delivery. The 6-speed SKYACTIV-MT manual transmission delivers accurate, sports-car style shifting through simplified design and a precision mechanism. More compact and lighter than comparable transmissions, it significantly cuts friction to improve fuel economy.

Mazda is committed to reducing the environmental impact of our vehicles. Yet we'd never want to compromise the driving enjoyment that's core to our DNA.

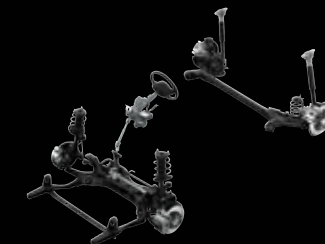
In answering this challenge we arrived at a breakthrough - SKYACTIV TECHNOLOGY. In every way imaginable, First-Ever Mazda CX-3 has been created to unlock efficiency and unleash performance potential. From lightweight body to advanced engines, we've been exacting and exhaustive.

In both petrol and diesel, outstanding economy is boosted by i-stop. It cleverly saves fuel by turning off the engine when you come to a stop, positioning it perfectly for a quick restart.



**SKYACTIV-BODY**

New-generation design and materials maximise lightness while achieving high rigidity. Key joints are strengthened by advanced techniques requiring no heavy reinforcement. High and ultra-high tensile steel cuts weight and boosts strength. Despite being light, Mazda CX-3 delivers world class collision protection.



**SKYACTIV-CHASSIS**

The sense of 'oneness' between car and driver is heightened through careful optimisation throughout. Agility and high refinement are ensured by lightweight front strut and rear torsion beam suspension employing firm bushings and precise geometry. Electric power-assisted steering delivers secure yet responsive handling, and also saves fuel.

# JUMP IN AND CONNECT UP

Cruise to the café or trip to the coast - Mazda CX-3 is geared to go. Hook up a compatible<sup>3</sup> smart phone, and a whole lot of good stuff comes along for the ride. In Maxx and above, MZD Connect taps into your music and contacts, plus online content from Facebook to Twitter feeds and more. It even reads texts and emails aloud. Everything centres on a touch screen placed for improved concentration on the road.

Just as thoughtful is the multi-function commander, which allows control on the move with minimum distraction. Better still, you can drive menu choice, audio and navigation by voice.



### FOLLOW ME

Satellite navigation incorporates spoken street names, advanced lane guidance and clear-to-read design. From Maxx up.



### ENHANCED CONTROL

Multi-function commander falls to hand, helping you concentrate on driving while making infotainment selections. From Maxx up.



**PANDORA**  
INTERNET RADIO

**aha**  
by HARMAN

**STITCHER**  
RADIO ON DEMAND

### TAP INTO YOUR WORLD

MZD Connect presents a world of online infotainment and content on 7-inch screen. From Maxx up.



## IT'S A SMART WAY FORWARD

Mazda CX-3 keeps you plugged in and on the pace with cleverly applied tech. Driving focus is strengthened by the Active Driving Display in sTouring and Akari. By putting key info such as current speed and navigation cues into your line of sight, distraction from the road is minimised. Choose 2.0 litre petrol power with automatic transmission and you can turn up the excitement. Flick to Sports mode and you sprint through the gears with more urgent response. Every model has hands-free Bluetooth® phone<sup>3</sup> hook up and music streaming, while USB ports keep devices playing and charging.



### IN THE MODE

Drive Selection switch lets you flick the powertrain into a more sporting mode. Automatic 2.0 litre petrol models only.



### ALL CONNECTED

Enjoy music via players or storage devices, and charge compatible devices using USB port. Auxiliary audio input also included. Twin USB ports Maxx and above.



### SAFETY ON DISPLAY

Active Driving Display helps you focus on the road. Important data is superimposed into your view ahead. Standard on sTouring and Akari.

## WHATEVER YOU WANT TO DO



Comfortable, clever and capable, Mazda CX-3 gives you a roomy, well-crafted cabin that works with whatever you're doing.

The rear seats split 60/40 to allow for large or oddly shaped items. Folding down both creates a large, virtually flat-floored space. A handy two-way floor lets you customise carrying capacity even more. It can hide a handy extra compartment, or be lowered to expand the cargo bay. Of course your personal stuff is well looked after, with plenty of useful storage.

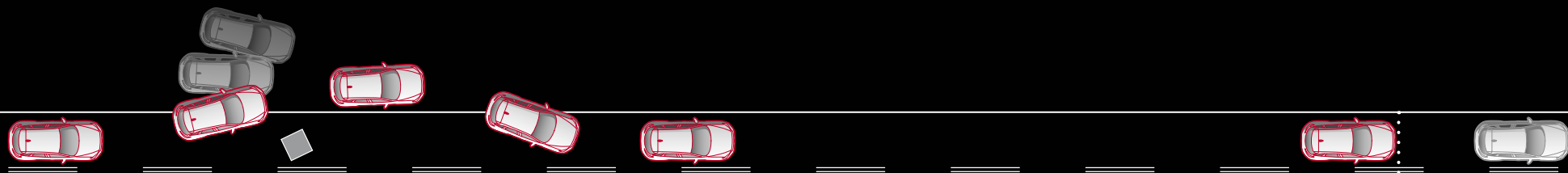
Akari in pure white leather/black suede trim!

# OUT FRONT FOR SAFETY

With an interior promoting driver concentration plus sharp reflexes, CX-3 is well armed to avoid potential trouble. It also packs in all the best safety you can have.

Collision protection is world-class, thanks to a highly rigid body integrating SRS airbags. A confident grasp on the road is aided by Dynamic Stability Control (DSC) with Traction Control System (TCS). ABS brakes feature Electronic Brake-force Distribution (EBD) which matches braking to vehicle load, while Emergency Brake Assist (EBA) boosts stopping power when emergency braking is sensed. An Emergency Stop Signal (ESS) triggers the hazard lights to warn following drivers if you have to brake suddenly from speed.

First-Ever Mazda CX-3's exciting abilities can be enjoyed with every confidence.



## SAFETY REFLEX

What if a hazard appears without warning? DSC acts instantly, braking the inner rear wheel to limit understeer (or outer front wheel to counter oversteer). Simultaneously the Traction Control System (TCS) cuts torque to the driven wheels to minimise skidding. Control is maintained and the hazard can be steered around.

## BETTER BRAKING

Stopping distance with EBA, ABS and EBD.

Stopping distance with no assistance.



## INCLINES MADE EASY

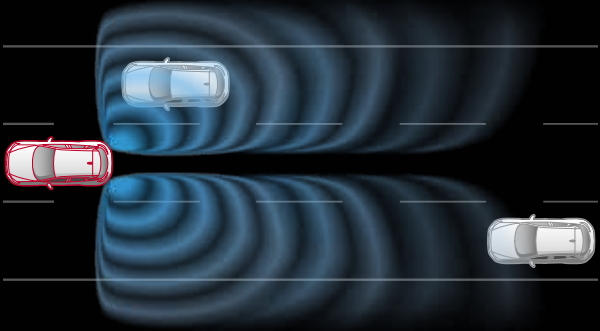
Take your foot from the brake on a slope and Hill Launch Assist (HLA) momentarily keeps the brakes on. You've got time to apply power and accelerate smoothly.

# SAFETY WITH HIGHER INTELLIGENCE

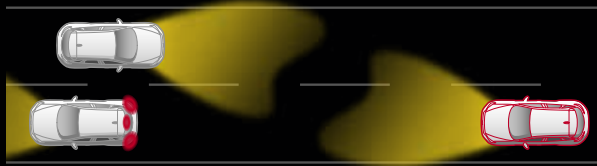
## i-ACTIVSENSE



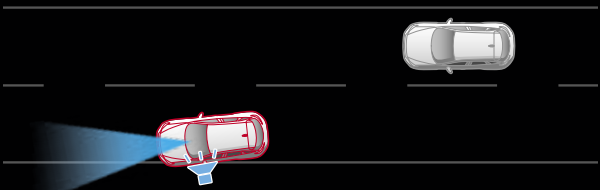
Mazda CX-3 protects you with impressive safety. Through advanced i-ACTIVSENSE technology,<sup>4</sup> the sense of confidence grows even greater. These intelligent systems are designed to help you recognise potential hazards, avoid collisions and minimise the severity of accidents when they can't be avoided. Using radar, cameras, and driver warnings, i-ACTIVSENSE keeps a careful eye out for you.



**ADVANCED BLIND SPOT MONITORING (ABSM)**  
 Radars scan external mirrors' blind spots, detecting unseen vehicles up to 45 metres back to help prevent hazardous lane changes. LED icon on the relevant mirror indicates a detected vehicle. If you activate turn indicators on the side of the potential hazard, the icon flashes and a warning sounds. Optional across range, standard on Akari.



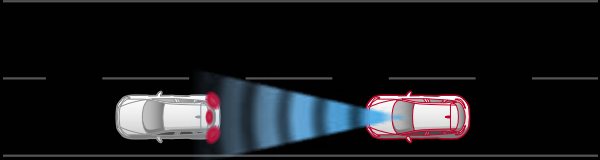
**HIGH BEAM CONTROL (HBC)**  
 Get the extended vision of high beam, without needing to manually switch to low-beam. A camera detects oncoming cars' headlights, or the taillights of cars in front. The system automatically switches to low-beam, then back when it's safe. Low beam also selected in lit areas or at low speed. Akari only.



**LANE DEPARTURE WARNING (LDW)**  
 Operates at approximately 70km/h and above. Using a windscreen-mounted camera to monitor road lane markings, the system issues an audible warning if it senses you're about to stray from your lane. Akari only.



**REAR CROSS TRAFFIC ALERT (RCTA)**  
 System warns if a car is approaching from either side of your vehicle as you reverse from a parking space. LED icon on exterior mirrors is supported by a beeping alert. Optional across range, standard on Akari.



**SMART CITY BRAKE SUPPORT**  
 Helps prevent, or moderate, low-speed impacts. At forward speeds of 4-30km/h, SCBS monitors the vehicle ahead assessing the chances of a collision. If a high risk is detected visual and audible warnings are given, while the brakes are primed for faster response should the driver brake. If the driver does not brake, the brakes are applied automatically. Optional across range, standard on Akari.

# MAZDA CX-3

NEO



Neo in Dynamic Blue Mica.



## Neo features include:

- 16 inch steel wheels with 215/60 tyres
- Exhaust extensions (chrome)
- Headlamps (Halogen)
- Power mirrors (body coloured)
- Power windows
- Rear spoiler
- Wipers (front) 2-speed with variable intermittent function
- Wiper (rear) with intermittent function
- Front seats with: height adjustment (driver) and seat back pocket (passenger)
- Rear seats with: 60/40 split fold backrest
- Seat trim: Black/grey cloth
- Air-conditioning
- Cruise control
- Tilt and telescopic adjustable steering wheel
- Trip computer<sup>5</sup>
- Vanity mirrors (front)
- Audio system with: AM/FM tuner, single disc CD player (MP3 compatible) and 4 speakers
- Auxiliary-audio input jack (3.5mm mini-stereo)
- Bluetooth® hands-free phone and audio capability<sup>3</sup>
- Steering wheel-mounted audio controls
- USB-audio input port (iPod compatible)
- Advanced keyless push-button engine start
- Airbags SRS: front (driver and passenger), side (front) and curtain (front and rear)
- Anti-lock Braking System (ABS)
- Dynamic Stability Control (DSC)
- Emergency Stop Signal (ESS)
- Hill Launch Assist (HLA)
- ISOFIX child restraint anchor points and top tethers
- Parking sensors (rear)
- Remote central locking (2 transmitters)
- Traction Control System (TCS)

## Safety Pack option<sup>4</sup>:

- Advanced Blind Spot Monitoring (ABSM)
- Rear Cross Traffic Alert (RCTA)
- Smart City Brake Support (SCBS)

## Powertrain:

- 2.0 litre in-line 4 cylinder 16 valve DOHC S-VT petrol (SKYACTIV-G) engine with i-stop
- Drivetrain: FWD
- Fuel consumption (combined): 6.3 l/100km<sup>2</sup> (FWD, man) or 6.1 l/100km<sup>2</sup> (FWD, auto)
- Max power: 109kW @ 6,000rpm
- Max torque: 192Nm @ 2,800rpm
- Transmission: 6-speed manual (SKYACTIV-MT) or 6-speed auto (SKYACTIV-Drive)



## CONSTANT CRUISE

Cruise control cuts driver fatigue on longer drives by automatically maintaining a pre-determined speed.



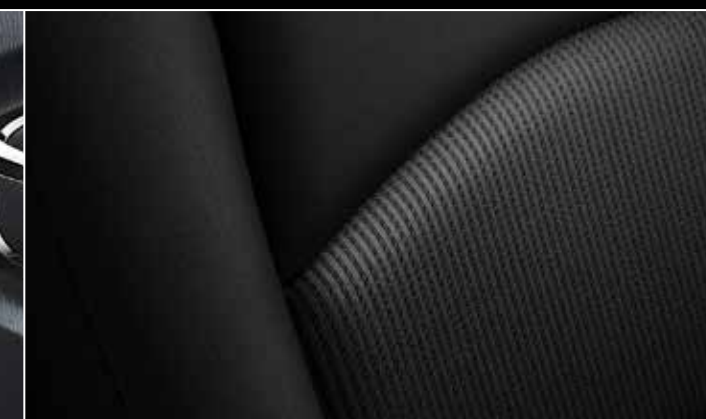
## PERFECT PARK

Parking sensors aid convenience and help prevent damage by sounding a warning when your car nears an obstacle.



## SPEAK FREELY

Controls for making Bluetooth® hands-free calls are handily placed on the steering wheel.



## WELL TAILORED

High quality cloth and expert finishing make supportive seats an even nicer place to be.

# MAZDA CX-3

MAXX



Maxx in Titanium Flash Mica.



**Maxx features additional to Neo include:**

- 16 inch alloy wheels
- Leather-wrapped: gear shift knob, handbrake handle and steering wheel
- Overhead sunglass storage box
- 7-inch full colour touch screen display (MZD Connect)
- Audio system with: 6 speakers
- Internet radio integration (Pandora, Stitcher™ and Aha™)
- Multi-function commander control
- Radio Data System (RDS) program information
- Satellite navigation
- Reverse camera

**Safety Pack option<sup>4</sup>:**

- Advanced Blind Spot Monitoring (ABSM)
- Rear Cross Traffic Alert (RCTA)
- Smart City Brake Support (SCBS)

**Powertrain:**

- 2.0 litre in-line 4 cylinder 16 valve DOHC S-VT petrol (SKYACTIV-G) engine with i-stop
- Drivetrain: FWD or i-ACTIV AWD
- Fuel consumption (combined): 6.3 l/100km<sup>2</sup> (FWD, man) or 6.1 l/100km<sup>2</sup> (FWD, auto) or 6.7 l/100km<sup>2</sup> (AWD, auto)

- Max power: 109kW @ 6,000rpm
- Max torque: 192Nm @ 2,800rpm
- Transmission: 6-speed manual (SKYACTIV-MT) or 6-speed auto (SKYACTIV-Drive)

**OR**

- 1.5 litre in-line 4 cylinder 16 valve DOHC intercooled turbo diesel (SKYACTIV-D) engine with i-stop
- Drivetrain: FWD
- Fuel consumption (combined): 4.8 l/100km<sup>2</sup> (FWD, auto)
- Max power: 77kW @ 4,000rpm
- Max torque: 270Nm @ 1,600 - 2,500rpm
- Transmission: 6-speed auto (SKYACTIV-Drive)



**STREET PRESENCE**

16 inch alloy wheels add to Mazda CX-3's sporting look and enhance handling.



**WELL CONNECTED**

MZD Connect's infotainment links you to social networks, music and more. Sat Nav and other system info accessed via 7-inch screen.



**GOT YOUR BACK**

Reverse camera adds ease and confidence to reversing and parking, giving you a detailed view of what's behind.



**TASTEFULLY TRIMMED**

Premium cloth, precise quality and distinctive piping combine with impressive results.

# MAZDA CX-3

sTOURING



sTouring in Ceramic Metallic.



## sTouring features additional to Maxx include:

- 18 inch alloy wheels with 215/50 tyres
- Front fog-lamps (LED)
- Daytime running lamps (LED)
- Headlamps (LED)
- Headlamps auto on/off function
- Tail-lamps (LED)
- Wipers (front) 2-speed with rain-sensing function
- Seat trim: Black Maztex/grey cloth
- Active Driving Display
- Air-conditioning (climate control)
- Advanced keyless entry

## Safety Pack option<sup>4</sup>:

- Advanced Blind Spot Monitoring (ABSM)
- Rear Cross Traffic Alert (RCTA)
- Smart City Brake Support (SCBS)

## Powertrain:

- 2.0 litre in-line 4 cylinder 16 valve DOHC S-VT petrol (SKYACTIV-G) engine with i-stop
- Drivetrain: FWD or i-ACTIV AWD
- Fuel consumption (combined): 6.3 l/100km<sup>2</sup> (FWD, man) or 6.1 l/100km<sup>2</sup> (FWD, auto) or 6.7 l/100km<sup>2</sup> (AWD, auto)

- Max power: 109kW @ 6,000rpm
- Max torque: 192Nm @ 2,800rpm
- Transmission: 6-speed manual (SKYACTIV-MT) or 6-speed auto (SKYACTIV-Drive)

## OR

- 1.5 litre in-line 4 cylinder 16 valve DOHC intercooled turbo diesel (SKYACTIV-D) engine with i-stop
- Drivetrain: i-ACTIV AWD
- Fuel consumption (combined): 5.1 l/100km<sup>2</sup> (AWD, auto)
- Max power: 77 kW @ 4,000rpm
- Max torque: 270Nm @ 1,600 - 2,500rpm
- Transmission: 6-speed auto (SKYACTIV-Drive)



## STUNNING STANCE

Eye-catching 18 inch alloy wheels lend even more visual impact to already dynamic shape.



## LIGHT THE WAY

LED headlamps generate a powerful, high quality beam of light for superb visibility



## HIGHLY FOCUSED

Active Driving Display puts key information central to your field of vision, helping you to concentrate on the road.



## SELECT SEATING

High grade materials are complemented by elegant pattern design and standout piping.

# MAZDA CX-3

AKARI



Akari in Soul Red Metallic.



### Akari features additional to sTouring include:

- Power sliding and tilt glass sunroof
- Seat trim: Black leather/black suede<sup>1</sup> or pure white leather/black suede<sup>1</sup>
- Advanced Blind Spot Monitoring (ABSM)
- High Beam Control (HBC)
- Lane Departure Warning (LDW)
- Rear Cross Traffic Alert (RCTA)
- Smart City Brake Support (SCBS)



### LOOKING SUNNY

Fresh air and sunshine are yours. Power operated glass sunroof offers versatility of a tilt function.



### KEEPING WATCH

Using intelligent technology, i-ACTIVSENSE<sup>4</sup> scans for potential hazards. It assists in avoiding collisions and reducing the severity of unavoidable accidents.

### Powertrain:

- 2.0 litre in-line 4 cylinder 16 valve DOHC S-VT petrol (SKYACTIV-G) engine with i-stop
- Drivetrain: FWD or i-ACTIV AWD
- Fuel consumption (combined): 6.3 l/100km<sup>2</sup> (FWD, man) or 6.1 l/100km<sup>2</sup> (FWD, auto) or 6.7 l/100km<sup>2</sup> (AWD, auto)

- Max power: 109kW @ 6,000rpm
- Max torque: 192Nm @ 2,800rpm
- Transmission: 6-speed manual (SKYACTIV-MT) or 6-speed auto (SKYACTIV-Drive)

### OR

- 1.5 litre in-line 4 cylinder 16 valve DOHC intercooled turbo diesel (SKYACTIV-D) engine with i-stop
- Drivetrain: i-ACTIV AWD
- Fuel consumption (combined): 5.1 l/100km<sup>2</sup> (AWD, auto)
- Max power: 77kW @ 4,000rpm
- Max torque: 270Nm @ 1,600 - 2,500rpm
- Transmission: 6-speed auto (SKYACTIV-Drive)



### KEYLESS CONVENIENCE

Just carry the remote locking unit, and advanced keyless entry lets you enter by pressing a button on either front door. Press another inside and the engine starts.



### FEELS SPECIAL

Luxurious Akari seating gives you black or pure white leather,<sup>1</sup> contrasting piping and attractive black suede.



# SPECIFICATIONS

Powertrain	2.0L I4 Petrol FWD	2.0L I4 Petrol AWD	1.5L I4 Diesel FWD	1.5L I4 Diesel AWD
Bore and stroke (mm)	83.5 x 91.2	83.5 x 91.2	76.0 x 82.6	76.0 x 82.6
Compression ratio	13.0 : 1	13.0 : 1	14.8 : 1	14.8 : 1
Drivetrain	FWD	i-ACTIV AWD	FWD	i-ACTIV AWD
Emissions standard	Euro stage V	Euro stage V	Euro stage V	Euro stage V
Engine capacity (cc)	1,998	1,998	1,499	1,499
Engine type	2.0 litre in-line 4 cylinder 16 valve DOHC S-VT petrol (SKYACTIV-G) engine with i-stop		1.5 litre in-line 4 cylinder 16 valve DOHC intercooled turbo diesel (SKYACTIV-D) engine with i-stop	
Fuel consumption (l/100km) <sup>2</sup> :	Manual (combined)	6.3	-	-
	Auto (combined)	6.1	6.7	4.8
Fuel system	Electronic direct injection		Common rail, electronic direct injection	
Fuel tank capacity (litres)	48	44	48	44
Gear ratio - Manual/Auto:	1st	3.363 / 3.552	- / 3.552	- / 3.552
	2nd	1.947 / 2.022	- / 2.022	- / 2.022
	3rd	1.300 / 1.452	- / 1.452	- / 1.452
	4th	1.029 / 1.000	- / 1.000	- / 1.000
	5th	0.837 / 0.708	- / 0.708	- / 0.708
	6th	0.680 / 0.599	- / 0.599	- / 0.599
	Reverse	3.385 / 3.893	- / 3.893	- / 3.893
	Final drive	4.105 / 4.325	- / 4.325	- / 3.591
Maximum power (kW @ rpm)	109 @ 6,000	109 @ 6,000	77 @ 4,000	77 @ 4,000
Maximum torque (Nm @ rpm)	192 @ 2,800	192 @ 2,800	270 @ 1,600-2,500	270 @ 1,600-2,500
Recommended fuel	Unleaded (91RON or higher) or E10	Unleaded (91RON or higher) or E10	Diesel	Diesel
Throttle control	Electronic (drive-by-wire)			
Transmission:	Manual	6-speed (SKYACTIV-MT)	-	-
	Auto	6-speed (SKYACTIV-Drive)		

Model Availability	Neo	Maxx	sTouring	Akari
2.0L I4 Petrol FWD / 6-speed manual	●	●	●	●
2.0L I4 Petrol FWD / 6-speed automatic	●	●	●	●
2.0L I4 Petrol AWD / 6-speed automatic	-	●	●	●
1.5L I4 Diesel FWD / 6-speed automatic	-	●	-	-
1.5L I4 Diesel AWD / 6-speed automatic	-	-	●	●

Options	Neo	Maxx	sTouring	Akari
Safety Pack <sup>4</sup> :				
Advanced Blind Spot Monitoring (ABSM)	○	○	○	●
Rear Cross Traffic Alert (RCTA)	○	○	○	●
Smart City Brake Support	○	○	○	●

Chassis	Neo	Maxx	sTouring	Akari
Brake diameter (mm):	Front (FWD)	280	280	280
	Front (AWD)	-	295	295
	Rear	281	281	281
Brake type:	Front	Ventilated disc		
	Rear	Solid disc		
Steering type	Electric power assist steering			
Suspension:	Front	MacPherson strut		
	Rear	Torsion beam		
Turning circle kerb to kerb (m):	10.6	10.6	10.6	10.6
Tyre size	215/60 R16	215/60 R16	215/50 R18	215/50 R18
Tyre index	95V	95V	92V	92V
Wheel size	16 X 6.5 J	16 X 6.5 J	18 X 7.0 J	18 X 7.0 J
Wheel type	Steel	Alloy	Alloy	Alloy
Tyre size (spare)	T125/90D16	T125/90D16	T125/90D16	T125/90D16
Wheel size (spare)	16 x 4.0 T	16 x 4.0 T	16 x 4.0 T	16 x 4.0 T
Wheel type (spare)	Temporary (Steel)			

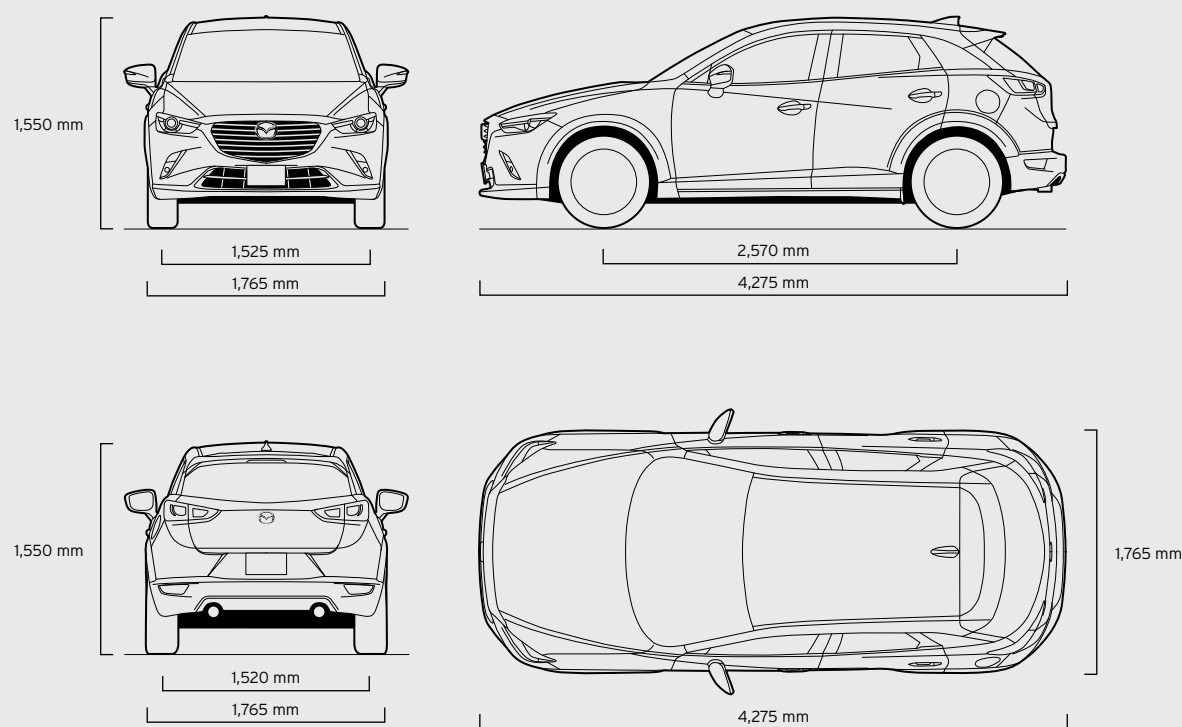
Weights and Capacities	Neo	Maxx	sTouring	Akari
5-seat SUV				
Cargo room volume VDA <sup>6</sup> (litres)	264	264	264	264
Cargo room volume VDA <sup>7</sup> (litres)	1,174	1,174	1,174	1,174
Kerb weight (kg)	2.0L I4 Petrol FWD / 6-speed manual	1,193	1,193	1,193
	2.0L I4 Petrol FWD / 6-speed automatic	1,226	1,226	1,252
	2.0L I4 Petrol AWD / 6-speed automatic	-	1,294	1,332
	1.5L I4 Diesel FWD / 6-speed automatic	-	1,262	-
	1.5L I4 Diesel AWD / 6-speed automatic	-	-	1,368
Towing capacity <sup>8</sup> (kg):	Braked (2.0L I4 Petrol)	1,200	1,200	1,200
	Braked (1.5L I4 Diesel)	-	800	800
	Unbraked	640	640	640
Tow ball download maximum (kg)	50	50	50	50

● = Standard, ○ = Option, - = Not available.

# SPECIFICATIONS

## Dimensions

5-seat SUV		Neo	Maxx	sTouring	Akari
Ground clearance with 75kg driver (mm)		155	155	155	155
Overall length (mm)		4,275	4,275	4,275	4,275
Overall width (mm)		1,765	1,765	1,765	1,765
Overall height (mm)		1,550	1,550	1,550	1,550
Track (mm):	Front	1,525	1,525	1,525	1,525
	Rear	1,520	1,520	1,520	1,520
Wheelbase (mm)		2,570	2,570	2,570	2,570



## Exterior

	Neo	Maxx	sTouring	Akari
Daytime running lamps (LED)	-	-	●	●
Door handles (body coloured)	●	●	●	●
Exhaust extensions (chrome)	●	●	●	●
Front and rear bumpers (body coloured)	●	●	●	●
Front fog-lamps (LED)	-	-	●	●
Green-tinted windscreen, side and rear windows	●	●	●	●
Headlamps (Halogen)	●	●	-	-
Headlamps (LED)	-	-	●	●
Headlamps auto on/off function	-	-	●	●
Power mirrors (body coloured)	●	●	●	●
Power sliding and tilt glass sunroof	-	-	-	●
Power windows	●	●	●	●
Rear spoiler	●	●	●	●
Tail-lamps (LED)	-	-	●	●
Window demister (rear)	●	●	●	●
Wipers (front) 2-speed with rain-sensing function	-	-	●	●
Wipers (front) 2-speed with variable intermittent function	●	●	-	-
Wiper (rear) with intermittent function	●	●	●	●

## Seats

	Neo	Maxx	sTouring	Akari
Front seats with:	Adjustable head restraints	●	●	●
	Height adjustment (driver)	●	●	●
	Rake and slide adjustment	●	●	●
	Seat back pocket (passenger)	●	●	●
Rear seats with:	60/40 split fold backrest	●	●	●
	Adjustable head restraints	●	●	●
Seat trim:	Black/grey cloth	●	●	-
	Black Maztex/grey cloth	-	-	●
	Black leather/black suede <sup>1</sup>	-	-	●
	Pure white leather/black suede <sup>1</sup>	-	-	○

● = Standard, ○ = Option, - = Not available.

# SPECIFICATIONS

Interior	Neo	Maxx	sTouring	Akari
Active Driving Display	-	-	●	●
Air-conditioning	●	●	-	-
Air-conditioning (climate control)	-	-	●	●
Ambient temperature display	●	●	●	●
Critical function warning lights/chimes	●	●	●	●
Cruise control	●	●	●	●
Cupholders	●	●	●	●
Door bottle holders (front and rear)	●	●	●	●
Glove box	●	●	●	●
Instrument panel light dimmer	●	●	●	●
Interior illumination:				
Cargo room lamp	●	●	●	●
Entry system with delayed fade	●	●	●	●
Map reading spot lamps	●	●	●	●
Power window switch (driver)	●	●	●	●
Interior release for fuel filler door	●	●	●	●
Leather-wrapped:				
Gear shift knob	-	●	●	●
Handbrake handle	-	●	●	●
Steering wheel	-	●	●	●
One touch (up and down) power window (driver)	●	●	●	●
Overhead sunglass storage box	-	●	●	●
Tachometer and electronic odometer/tripmeter	●	●	●	●
Tilt and telescopic adjustable steering wheel	●	●	●	●
Trip computer <sup>5</sup>	●	●	●	●
Vanity mirrors (front)	●	●	●	●

Infotainment	Neo	Maxx	sTouring	Akari
7-inch full colour touch screen display (MZD Connect)	-	●	●	●
AM/FM tuner	●	●	●	●
Auxiliary-audio input jack (3.5mm mini-stereo)	●	●	●	●
Bluetooth® hands-free phone and audio capability <sup>3</sup>	●	●	●	●
CD player, single disc (MP3 compatible)	●	●	●	●
Internet radio integration (Pandora,® Stitcher™ and Aha™)	-	●	●	●
Multi-function commander control	-	●	●	●
Radio Data System (RDS) program information	-	●	●	●
Satellite navigation	-	●	●	●
Speakers (4)	●	-	-	-
Speakers (6)	-	●	●	●
Steering wheel-mounted audio controls	●	●	●	●
USB-audio input port (iPod compatible)	●	●	●	●

Safety and Security	Neo	Maxx	sTouring	Akari
Advanced Blind Spot Monitoring (ABSM)	○	○	○	●
Advanced keyless entry	-	-	●	●
Advanced keyless push-button engine start	●	●	●	●
Airbags SRS:				
Front (driver and passenger)	●	●	●	●
Side (front)	●	●	●	●
Curtain (front and rear)	●	●	●	●
Anti-lock Braking System (ABS)	●	●	●	●
Childproof rear door locks	●	●	●	●
Dynamic Stability Control (DSC)	●	●	●	●
Electronic Brake-force Distribution (EBD)	●	●	●	●
Emergency Brake Assist (EBA)	●	●	●	●
Emergency Stop Signal (ESS)	●	●	●	●
Engine immobiliser	●	●	●	●
High Beam Control (HBC)	-	-	-	●
High mount stop lamp	●	●	●	●
Hill Launch Assist (HLA)	●	●	●	●
Intrusion-minimising brake pedal	●	●	●	●
ISOFIX child restraint anchor points and top tethers	●	●	●	●
Lane Departure Warning (LDW)	-	-	-	●
Left-hand-side convex (wide angle) exterior mirror	●	●	●	●
Parking sensors (rear)	●	●	●	●
Rear Cross Traffic Alert (RCTA)	○	○	○	●
Remote central locking (2 transmitters)	●	●	●	●
Reverse camera	-	●	●	●
Seat-belt warning (front and rear)	●	●	●	●
Seat-belts 3-point lap-sash (all seats)	●	●	●	●
Seat-belts (front) with pretensioners, load-limiters and height adjustable shoulder anchorages	●	●	●	●
Side impact door beams	●	●	●	●
Smart City Brake Support (SCBS)	○	○	○	●
Traction Control System (TCS)	●	●	●	●
'Triple H' safety construction with front and rear crumple zones	●	●	●	●
Whiplash-minimising front seats	●	●	●	●

● = Standard, ○ = Option, - = Not available.

# ENJOY MAZDA CX-3 WITH CONFIDENCE



## Rest assured – your warranty

The quality built into Mazda CX-3 is backed up by a 3-year, unlimited kilometre factory warranty and 6-year panel protection warranty.

## Maintain that Zoom-Zoom

Your Mazda CX-3 deserves the best in care. Servicing with Mazda Service Select gives your car the advantage of factory trained Service Technicians and advanced computer diagnostic systems. As well as maintaining your Mazda in A1 condition, you'll also be protecting your vehicle's outstanding resale value.

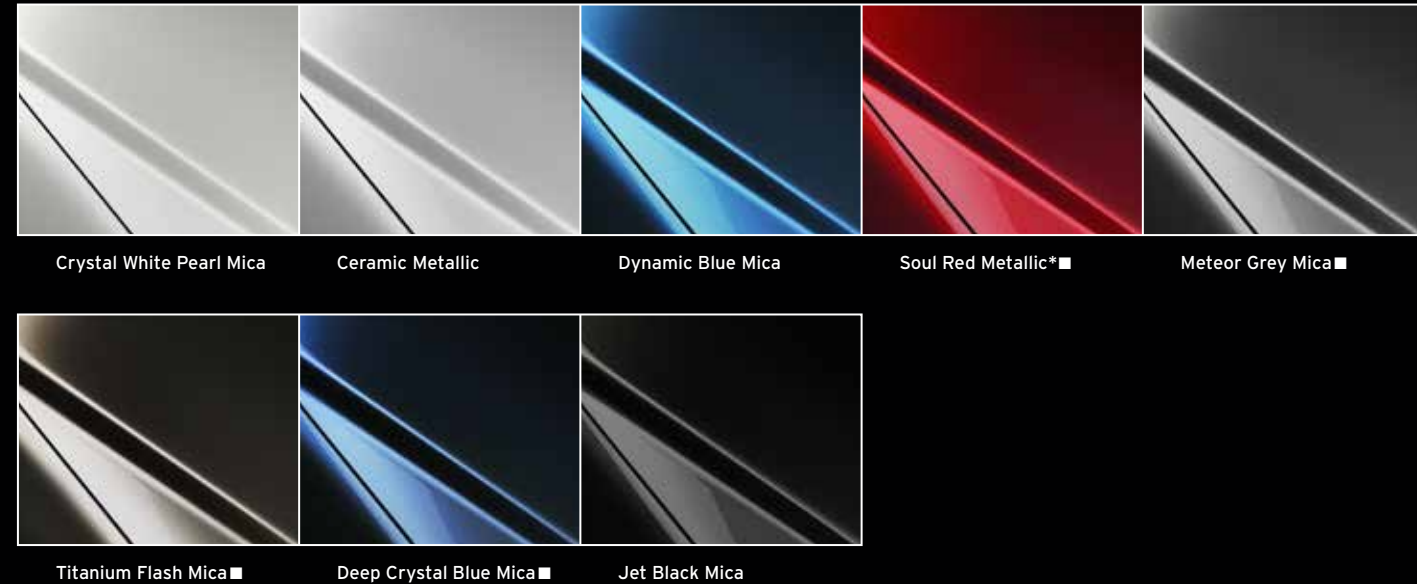


## Help is at hand – Mazda Roadside Assistance

Flat batteries, running out of fuel, flat tyres – everyone faces hiccups from time to time. When the unexpected happens, Mazda Roadside Assistance is there to keep you moving. You'll be covered 24 hours a day, 365 days a year, all round Australia. Better still, your Mazda will only be worked on by Mazda-approved technicians. Choose a Standard policy offering everything needed to get going again, or Premium with extras like accommodation, a rental car and vehicle recovery. Either can be purchased across the entire Mazda range. (Terms and conditions apply.)

# MAZDA CX-3 COLOUR AND TRIM

## BODY COLOURS



## INTERIOR TRIMS



(1) Leather interior includes some Maztex material on selected high impact surfaces. Pure white leather/black suede interior only available with selected exterior colours. (2) Fuel consumption figures are based on ADR 81/02 test results. They are useful in comparing the fuel consumption of different vehicles. They may not be the fuel consumption achieved in practice. This will depend on traffic and road conditions and how the vehicle is driven. (3) Please check the compatibility of your Bluetooth® device (particularly your mobile phone) with the specific Mazda vehicle you intend to purchase as not all devices operate correctly. Visit [www.mazda.com.au/Bluetooth](http://www.mazda.com.au/Bluetooth) or consult your Mazda Dealer for further information. (4) i-ACTIVSENSE safety technologies are driver assist technologies only and should not be used in place of skilled and safe driving practices. It is the driver's sole responsibility to constantly monitor vehicle surroundings and conditions at all times. (5) Trip computer displays current and average fuel consumption, distance to empty and average vehicle speed. (6) Measured with rear seats up and up to tonneau cover. (7) Measured with rear seats folded down and up to roof. (8) Subject to State or Territory regulations.

All care is taken to ensure the accuracy of this brochure at the time of publication. Specifications, features and model availability may vary from State to State and may change without notice. Please refer to [mazda.com.au](http://mazda.com.au) or consult your Mazda Dealer prior to placing an order to ascertain current information on model availability, specifications, options, features and prices. Mazda Australia Pty Ltd will not be liable for any loss arising from the information in this brochure, whether in negligence or otherwise. Mazda Australia Pty Ltd ABN 78 004 690 804, 385 Ferntree Gully Road, Mt Waverley, Victoria 3149. iPhone and iPod are trademarks of Apple Inc., registered in the U.S. and other countries. Due to the nature of the printing process, colours may vary from those shown in this brochure. Ask your Dealer to show you a product sample.

\*At extra cost

■ Pure white leather/black suede only available with Soul Red Metallic, Meteor Grey Mica, Titanium Flash Mica and Deep Crystal Blue Mica exterior colours.



mazda



Like us on the official Mazda Australia fan page for the latest pictures, videos, events, news and competitions. Ask questions, give feedback or upload your own photos. Join the conversation at [facebook.com/mazdaaus](https://facebook.com/mazdaaus)



Join the conversation on Twitter. Keep up with breaking Mazda news, videos and pictures from around the web. Tweet your questions, give feedback or post your own photos. [twitter.com/mazdaaus](https://twitter.com/mazdaaus)



Visit Mazda Australia's YouTube channel. You'll find video content with exclusive behind-the-scenes footage. [youtube.com/zoomzoom](https://youtube.com/zoomzoom)

Published May 2015. MAZ11664 126.027

For further information visit [mazda.com.au](https://mazda.com.au) or Freecall 1800 034 411

*MAZDA CX-3*  
*ACCESSORIES*



*zoom-zoom*  
*zoom-zoom*  
*zoom-zoom*

*IMAGINATION DRIVES US*

**MAKE YOUR MAZDA EVEN MORE REWARDING**



**KUROI SPORTS PACK (RED)**

Add even more style with this aerodynamic sports kit, designed to further complement the CX-3's striking shape. (Also available in black. Items sold individually.)

- Door mirror caps
- Front under spoiler
- Rear centre under spoiler
- Rear roof spoiler
- Rear side under spoiler
- Side under spoiler

sTouring Diesel AWD in Ceramic Metallic.

An SUV with compact size and sporting agility, First-Ever Mazda CX-3 lets you move like never before. Mazda Genuine Accessories dial up the enjoyment. They let you personalise your car, and protect its value too. They also give you great design, quality, and safety, plus the backing of a Mazda warranty. Mazda Genuine Accessories let you add even more Zoom-Zoom.



- FEATURED HERE**
- Front mud guards
  - Front parking sensors
  - Headlight protectors
  - Roof racks
  - Slimline weathershields
  - Smoke bonnet protector
  - 16-inch multi-spoke alloy wheels

Akari Petrol AWD in Soul Red.



**KAYAK HOLDER**  
The perfect solution for transporting your kayak or canoe.



**BIKE RACK (WHEEL ON)**  
Bring your bike without having to remove a wheel.



**BIKE RACK (WHEEL OFF)**  
Makes it easy to take your bike with you.





**FEATURED HERE**

- Alloy accelerator pedal
- Alloy brake pedal
- Alloy foot rest
- Floor mats
- Scuff plates
- Welcome illumination



**FLOOR MATS**

Protect your carpet with these high quality, tailor-made branded floor mats. Fastening system enhances safety.



**ARMREST CONSOLE**

Add extra comfort and extend storage space with this centre armrest. Features adjustable dividers, and lifts to allow access to items underneath.



**FRONT SEAT COVERS**

These durable, waterproof neoprene covers keep your seats free from dirt and grime, and offer full airbag compatibility.



**REAR SEAT COVER**

Guard against dirt, spills, damage and the effects of wear with this light weight, waterproof cover.



**16-INCH 7-SPOKE ALLOY WHEELS**

A distinctive way to create an even more head-turning stance.



**16-INCH MULTI-SPOKE ALLOY WHEELS**

This sports design will add a highly dynamic look to your CX-3.



**CARGO TRAY**

Shield your cargo floor from dirt, scratches and liquids. This non-slip tray is tailor-fitted for superior convenience and performance.



**CARGO ORGANISER BOX**

Prevent items from sliding around in the cargo area. Features moveable internal dividers, detachable lids and a securable base.



**TOW BAR**

1200kg<sup>1</sup> braked towing capacity with 50kg maximum tow ball download limit<sup>2</sup>. Detachable tongue kit makes tow bar invisible once tow ball is removed. (Tow ball sold separately)



**REAR MUD GUARDS**

Keep bodywork free of mud and road grime.



**BOOT LIP PROTECTOR**

Load and unload your CX-3 without worrying about marking its boot lip or rear bumper.



**REAR WINDOW SHADES**

Protect your passengers and cargo from the sun's rays. Set covers both rear passenger windows.



#### MIRROR INTEGRATED PARKING CAMERA

Park accurately with ease. Replacement rear view mirror integrates camera's image on 4.3" LCD, which activates as reverse is selected. Screen brightness automatically adjusts to ambient light. (Neo only)



#### SCREEN INTEGRATED PARKING SENSORS

Graphic display of the detected object and its proximity supplements audible parking sensors. Graphic appears beside rear camera image on the 7-inch display, boosting convenience and safety. (Maxx and above.)



#### AUDIO RETRACTABLE LIGHTNING CABLE

Charge your iPhone, stream music and search through your playlists using your vehicle's audio controls.



#### AUDIO RETRACTABLE MICRO USB CABLE

Charge your Android phone and stream music to your vehicle's audio system.

#### ALSO AVAILABLE

- Alloy brake & clutch pedal set
- Black wheel lock set
- Chrome wheel lock set
- Front under spoiler (black)
- Retractable audio cable (3.5mm male-to-male)
- Rear centre under spoiler (black)
- Side under spoiler (black)
- Tow ball
- Tow ball cover

SEE THE FULL RANGE OF MAZDA GENUINE ACCESSORIES AT [MAZDA.COM.AU](http://MAZDA.COM.AU)



**ZOOM-ZOOM**

1. 1,200kg braked towing capacity for all petrol models, 800kg braked towing capacity for diesel models. 2. Subject to State or Territory regulations. All care is taken to ensure the accuracy of this brochure at the time of publication. Sports and other equipment shown are for illustrative purposes only and do not come standard with the vehicle, or as Mazda Genuine Accessories. Specifications, features and availability may vary from State to State and may change without notice. Please refer to [mazda.com.au](http://mazda.com.au) or consult your Mazda Dealer prior to placing an order to ascertain current information on availability, specifications, features and prices. Mazda Australia Pty Ltd ABN 78 004 690 804, 385 Ferntree Gully Road, Mount Waverley, Victoria 3149. All Mazda Genuine Accessories fitted at the point of sale of a new Mazda passenger vehicle are covered under the Mazda 3-year/unlimited kilometre warranty. Mazda Genuine Accessories fitted after the sale of a new Mazda vehicle are covered by the Mazda 2-year or 40,000 kilometre warranty (whichever should occur first). iPhone is a trademark of Apple Inc., registered in the U.S. and other countries. Published June 2015. MAZ11569 126.078