

Accent

HYUNDAI NEW THINKING. NEW POSSIBILITIES.



Like us at [facebook.com/hyundai australia](https://www.facebook.com/hyundai australia)

Follow us at twitter.com/hyundai aus

Follow us at [instagram.com/hyundai aus](https://www.instagram.com/hyundai aus)



Hyundai Motor Company Australia Pty Ltd 394 Lane Cove Road, Macquarie Park, NSW Australia 2113
 Hyundai Motor Company (HMC) and the Hyundai Motor Company Australia (HMCA) each reserve the right to alter vehicle specifications and equipment levels without notice. Some equipment featured on the cars in this brochure may not be available in Australia or may be optional. To the extent permitted by the law, neither HMC nor HMCA shall be liable to any person as a result of reliance on the content of this brochure. Please consult your Hyundai dealer for the latest specifications, equipment levels, options, prices, colours and vehicle availability. Metallic and mica paint are optional extras. Note: Information in this brochure is current as at 05/09/2016. HMCA10019. **Part No. RB0916B**

HYUNDAI ACCENT

Engine	Kappa 1.4 MPI Petrol (Active)		Gamma 1.6 GDI Petrol (SR)	
Cylinder capacity	1.4 litres (1,381 cc)		1.6 litres (1,591 cc)	
Number of cylinders	4		4	
Valve system	16 valve dual overhead cam (DOHC) with Dual Overhead Valve Side Valve Timing (D-CVT)		16 valve dual overhead cam (DOHC) with Dual Overhead Valve Side Valve Timing (D-CVT)	
Maximum power	74 kW @ 5,000 RPM		103 kW @ 5,200 RPM	
Maximum torque	133 Nm @ 3,500 RPM		157 Nm @ 4,650 RPM	
Fuel system / Fuel required	Multi-Point Fuel Injection (MPI) / 91 RON ULP		Gasoline Direct Injection (GDI) / 91 RON ULP	
Box x Stroke	720 mm x 84.0 mm		710 mm x 85.44 mm	
Compression ratio	10.5:1		11.0:1	
Transmission	Kappa 1.4 MPI Petrol (Active)		Gamma 1.6 GDI Petrol (SR)	
Manual	Continuously variable transmission		6 speed manual transmission	
Automatic	-		-	
Gear ratio	Manual	CVT	Manual	Automatic
Forward main	-	0.75	-	-
Forward main	3.769	4.335	3.615	4.400
2nd	2.955	-	1.955	2.726
3rd	1.970	-	1.286	1.864
4th	1.626	-	1.026	1.482
5th	0.993	-	0.639	1.000
6th	0.724	-	0.703	0.724
Reverse	3.700	3.637	3.700	3.460
Final	4.093	3.965	3.893	3.975
Power Steering	MacPherson Strut			
Front	Coil over twin beam set with high performance mono-tube rear dampers			
Power Steering	MPS Hydraulic Power Steering rack and pinion			
Type	Tilt-Adjustable			
Column	104 inches			
Minimum turning diameter between wheels	2.90			
Number of steering wheel turns to lock	-			
General	Dual-Dependable Cruise Control, power-assisted with Electronic Brake Distribution, 256 mm x 220 mm vented disc			
Front	262 mm x 10 mm split-disc			
Disc	-			
Dimensions	Handicap			
Exterior	Secon			
Length	4,135 mm			
Width	1,670 mm			
Height	1,460 mm			
Wheelbase	2,570 mm			
Minimum ground clearance	140 mm			
Wheel track - front / rear	1,507 / 1,511 mm (Std) / 1,487 / 1,493 mm (SR)			
Overhang - front / rear	820 / 725 mm			
Interior	820 / 880 mm			
Head room - front / rear	1,014 / 995 mm			
Leg room - front / rear	1,002 / 986 mm			
Shoulder room - front / rear	1,364 / 1,356 mm			
Hip room - front / rear	1,304 / 1,198 mm			
Car volume - SE / VDA	420 / 370 litres			
Weights	Kappa 1.4 MPI Petrol (Active)			
Manual	393 / 460 litres			
Automatic	-			
Car volume - SE / VDA	420 / 370 litres			
Weights	Kappa 1.4 MPI Petrol (Active)			
Manual	393 / 460 litres			
Automatic	-			
Car volume - SE / VDA	420 / 370 litres			
Weights	Gamma 1.6 GDI Petrol (SR)			
Manual	400 / 470 litres			
Automatic	-			
Car volume - SE / VDA	420 / 370 litres			
Weights	Gamma 1.6 GDI Petrol (SR)			
Manual	400 / 470 litres			
Automatic	-			
Car volume - SE / VDA	420 / 370 litres			
Weights	Gamma 1.6 GDI Petrol (SR)			
Manual	400 / 470 litres			
Automatic	-			
Car volume - SE / VDA	420 / 370 litres			
Weights	Gamma 1.6 GDI Petrol (SR)			
Manual	400 / 470 litres			
Automatic	-			
Car volume - SE / VDA	420 / 370 litres			
Weights	Gamma 1.6 GDI Petrol (SR)			
Manual	400 / 470 litres			
Automatic	-			
Car volume - SE / VDA	420 / 370 litres			
Weights	Gamma 1.6 GDI Petrol (SR)			
Manual	400 / 470 litres			
Automatic	-			
Car volume - SE / VDA	420 / 370 litres			
Weights	Gamma 1.6 GDI Petrol (SR)			
Manual	400 / 470 litres			
Automatic	-			
Car volume - SE / VDA	420 / 370 litres			
Weights	Gamma 1.6 GDI Petrol (SR)			
Manual	400 / 470 litres			
Automatic	-			
Car volume - SE / VDA	420 / 370 litres			
Weights	Gamma 1.6 GDI Petrol (SR)			
Manual	400 / 470 litres			
Automatic	-			
Car volume - SE / VDA	420 / 370 litres			
Weights	Gamma 1.6 GDI Petrol (SR)			
Manual	400 / 470 litres			
Automatic	-			
Car volume - SE / VDA	420 / 370 litres			
Weights	Gamma 1.6 GDI Petrol (SR)			
Manual	400 / 470 litres			
Automatic	-			
Car volume - SE / VDA	420 / 370 litres			
Weights	Gamma 1.6 GDI Petrol (SR)			
Manual	400 / 470 litres			
Automatic	-			
Car volume - SE / VDA	420 / 370 litres			
Weights	Gamma 1.6 GDI Petrol (SR)			
Manual	400 / 470 litres			
Automatic	-			
Car volume - SE / VDA	420 / 370 litres			
Weights	Gamma 1.6 GDI Petrol (SR)			
Manual	400 / 470 litres			
Automatic	-			
Car volume - SE / VDA	420 / 370 litres			
Weights	Gamma 1.6 GDI Petrol (SR)			
Manual	400 / 470 litres			
Automatic	-			
Car volume - SE / VDA	420 / 370 litres			
Weights	Gamma 1.6 GDI Petrol (SR)			
Manual	400 / 470 litres			
Automatic	-			
Car volume - SE / VDA	420 / 370 litres			
Weights	Gamma 1.6 GDI Petrol (SR)			
Manual	400 / 470 litres			
Automatic	-			
Car volume - SE / VDA	420 / 370 litres			
Weights	Gamma 1.6 GDI Petrol (SR)			
Manual	400 / 470 litres			
Automatic	-			
Car volume - SE / VDA	420 / 370 litres			
Weights	Gamma 1.6 GDI Petrol (SR)			
Manual	400 / 470 litres			
Automatic	-			
Car volume - SE / VDA	420 / 370 litres			
Weights	Gamma 1.6 GDI Petrol (SR)			
Manual	400 / 470 litres			
Automatic	-			
Car volume - SE / VDA	420 / 370 litres			
Weights	Gamma 1.6 GDI Petrol (SR)			
Manual	400 / 470 litres			
Automatic	-			
Car volume - SE / VDA	420 / 370 litres			
Weights	Gamma 1.6 GDI Petrol (SR)			
Manual	400 / 470 litres			
Automatic	-			
Car volume - SE / VDA	420 / 370 litres			
Weights	Gamma 1.6 GDI Petrol (SR)			
Manual	400 / 470 litres			
Automatic	-			
Car volume - SE / VDA	420 / 370 litres			
Weights	Gamma 1.6 GDI Petrol (SR)			
Manual	400 / 470 litres			
Automatic	-			
Car volume - SE / VDA	420 / 370 litres			
Weights	Gamma 1.6 GDI Petrol (SR)			
Manual	400 / 470 litres			
Automatic	-			
Car volume - SE / VDA	420 / 370 litres			
Weights	Gamma 1.6 GDI Petrol (SR)			
Manual	400 / 470 litres			
Automatic	-			
Car volume - SE / VDA	420 / 370 litres			
Weights	Gamma 1.6 GDI Petrol (SR)			
Manual	400 / 470 litres			
Automatic	-			
Car volume - SE / VDA	420 / 370 litres			
Weights	Gamma 1.6 GDI Petrol (SR)			
Manual	400 / 470 litres			
Automatic	-			
Car volume - SE / VDA	420 / 370 litres			
Weights	Gamma 1.6 GDI Petrol (SR)			
Manual	400 / 470 litres			
Automatic	-			
Car volume - SE / VDA	420 / 370 litres			
Weights	Gamma 1.6 GDI Petrol (SR)			
Manual	400 / 470 litres			
Automatic	-			
Car volume - SE / VDA	420 / 370 litres			
Weights	Gamma 1.6 GDI Petrol (SR)			
Manual	400 / 470 litres			
Automatic	-			
Car volume - SE / VDA	420 / 370 litres			
Weights	Gamma 1.6 GDI Petrol (SR)			
Manual	400 / 470 litres			
Automatic	-			
Car volume - SE / VDA	420 / 370 litres			
Weights	Gamma 1.6 GDI Petrol (SR)			
Manual	400 / 470 litres			
Automatic	-			
Car volume - SE / VDA	420 / 370 litres			
Weights	Gamma 1.6 GDI Petrol (SR)			
Manual	400 / 470 litres			
Automatic	-			
Car volume - SE / VDA	420 / 370 litres			
Weights	Gamma 1.6 GDI Petrol (SR)			
Manual	400 / 470 litres			
Automatic	-			
Car volume - SE / VDA	420 / 370 litres			
Weights	Gamma 1.6 GDI Petrol (SR)			
Manual	400 / 470 litres			
Automatic	-			
Car volume - SE / VDA	420 / 370 litres			
Weights	Gamma 1.6 GDI Petrol (SR)			
Manual	400 / 470 litres			
Automatic	-			
Car volume - SE / VDA	420 / 370 litres			
Weights	Gamma 1.6 GDI Petrol (SR)			
Manual	400 / 470 litres			
Automatic	-			
Car volume - SE / VDA	420 / 370 litres			
Weights	Gamma 1.6 GDI Petrol (SR)			
Manual	400 / 470 litres			
Automatic	-			
Car volume - SE / VDA	420 / 370 litres			
Weights	Gamma 1.6 GDI Petrol (SR)			
Manual	400 / 470 litres			
Automatic	-			
Car volume - SE / VDA	420 / 370 litres			
Weights	Gamma 1.6 GDI Petrol (SR)			
Manual	400 / 470 litres			
Automatic	-			
Car volume - SE / VDA	420 / 370 litres			
Weights	Gamma 1.6 GDI Petrol (SR)			
Manual	400 / 470 litres			
Automatic	-			
Car volume - SE / VDA	420 / 370 litres			
Weights	Gamma 1.6 GDI Petrol (SR)			
Manual	400 / 470 litres			
Automatic	-			
Car volume - SE / VDA	420 / 370 litres			
Weights	Gamma 1.6 GDI Petrol (SR)			
Manual	400 / 470 litres			
Automatic	-			
Car volume - SE / VDA	420 / 370 litres			
Weights	Gamma 1.6 GDI Petrol (SR)			
Manual	400 / 470 litres			
Automatic	-			
Car volume - SE / VDA	420 / 370 litres			
Weights	Gamma 1.6 GDI Petrol (SR)			
Manual	400 / 470 litres			
Automatic	-			
Car volume - SE / VDA	420 / 370 litres			
Weights	Gamma 1.6 GDI Petrol (SR)			
Manual	400 / 470 litres			
Automatic	-			
Car volume - SE / VDA	420 / 370 litres			
Weights	Gamma 1.6 GDI Petrol (SR)			
Manual	400 / 470 litres			
Automatic	-			
Car volume - SE / VDA	420 / 370 litres			
Weights	Gamma 1.6 GDI Petrol (SR)			
Manual	400 / 470 litres			
Automatic	-			
Car volume - SE / VDA	420 / 370 litres			
Weights	Gamma 1.6 GDI Petrol (SR)			
Manual	400 / 470 litres			
Automatic	-			
Car volume - SE / VDA	420 / 370 litres			
Weights	Gamma 1.6 GDI Petrol (SR)			
Manual	400 / 470 litres			
Automatic	-			
Car volume - SE / VDA	420 / 370 litres			
Weights	Gamma 1.6 GDI Petrol (SR)			
Manual	400 / 470 litres			
Automatic	-			
Car volume - SE / VDA	420 / 370 litres			
Weights	Gamma 1.6 GDI Petrol (SR)			
Manual	400 / 470 litres			
Automatic	-			
Car volume - SE / VDA	420 / 370 litres			
Weights	Gamma 1.6 GDI Petrol (SR)			
Manual	400 / 470 litres			
Automatic	-			
Car volume - SE / VDA	420 / 370 litres			
Weights	Gamma 1.6 GDI Petrol (SR)			
Manual	400 / 470 litres			
Automatic	-			
Car volume - SE / VDA	420 / 370 litres			
Weights	Gamma 1.6 GDI Petrol (SR)			
Manual	400 / 470 litres			
Automatic	-			
Car volume - SE / VDA	420 / 370 litres			
Weights	Gamma 1.6 GDI Petrol (SR)			
Manual	400 / 470 litres			
Automatic	-			
Car volume - SE / VDA	420 / 370 litres			
Weights	Gamma 1.6 GDI Petrol (SR)			
Manual	400 / 470 litres			
Automatic	-			
Car volume - SE / VDA	420 / 370 litres			
Weights	Gamma 1.6 GDI Petrol (SR)			
Manual	400 / 470 litres			
Automatic	-			
Car volume - SE / VDA	420 / 370 litres			
Weights	Gamma 1.6 GDI Petrol (SR)			
Manual	400 / 470 litres			
Automatic	-			
Car volume - SE / VDA	420 / 370 litres			
Weights	Gamma 1.6 GDI Petrol (SR)			
Manual	400 / 470 litres			
Automatic	-			
Car volume - SE / VDA	420 / 370 litres			
Weights	Gamma 1.6 GDI Petrol (SR)			
Manual	400 / 470 litres			
Automatic	-			
Car volume - SE / VDA	420 / 370 litres			
Weights	Gamma 1.6 GDI Petrol (SR)			
Manual	400 / 470 litres			
Automatic	-			
Car volume - SE / VDA	420 / 370 litres			
Weights	Gamma 1.6 GDI Petrol (SR)			
Manual	400 / 470 litres			
Automatic	-			
Car volume - SE / VDA	420 / 370 litres			
Weights	Gamma 1.6 GDI Petrol (SR)			
Manual	400 / 470 litres			
Automatic	-			

HELLO

Welcome to Hyundai.

If you're new to us, we'd like to introduce you to a company which has become the world's fastest growing automotive brand.

We are obsessed with making visionary cars that are great to own and fun to drive. Our focus on the latest technology, the best safety features, and the highest quality engineering is the reason why so many people now choose Hyundai.

Each new Hyundai vehicle is the product of new thinking – of looking afresh and questioning the way things have been done in the past. And from new thinking comes new possibilities.

Enjoy the drive.

A NEW BENCHMARK IN SERVICE AND SUPPORT

Owning a car should be an enjoyable, stress-free experience with service that doesn't end in the showroom. That's why every new Hyundai comes with iCare. For years now, Hyundai has been the market leader in customer care and after sales support. To put it simply, we're with you for the road ahead.

LIFETIME SERVICE PLAN*

With our Lifetime Service Plan, you'll always know the price of your next service before you pull into the service centre.

ROADSIDE SUPPORT PLAN^

It's unlikely you'll run into problems while on the road. But if you do, it's nice to know that with our 24/7 Roadside Support Plan there's always someone on standby to get you up and running again.

5 YEAR UNLIMITED KILOMETRE WARRANTY*

Five years. Unlimited kilometres. It's a warranty idea we pioneered, and shows the belief we have in the manufacturing, quality, control, and design that's gone into your vehicle.

Customer Care Centre 1800 186 306

www.myhyundai.com.au



* **Lifetime Service Plan:** For the benefit of Hyundai owners, Hyundai provides online quotes, which specify the maximum price applicable for a vehicle's next scheduled maintenance service at a participating authorised Hyundai Dealer and using genuine Hyundai parts (where required). Online quotes are available at www.hyundai.com.au and apply for a stated effective period only and may change without notice after that effective period. Standard scheduled maintenance services are of limited scope. The benefit of online quotes is available for all Hyundai vehicles for their lifetime.

^ **Roadside Support Plan:** Complimentary 12 months Roadside Support when you purchase a new Hyundai passenger vehicle (excluding rental buyers). Further Roadside Support extensions are available, each for 12 months from the date of a scheduled maintenance service at a participating authorised Hyundai Dealer (unless vehicle is more than 108 months [9 years] from the original new car sale date, in which case entitlement to Roadside Support ends when vehicle reaches 120 months [10 years] from original new car sale date).

* **5 year/unlimited km warranty:** Applies to new passenger vehicles used for private/domestic purposes. Excludes vehicles used at any time for "commercial application" as defined in the vehicle warranty policy, for which a 5 year/ 130,000km (whichever occurs first) warranty applies. Refer to full warranty terms & conditions for details and exclusions.



Discover the New Motion.

The Accent is made for a generation who are clearly on the move. With a progressive and extremely stylish look, the streamlined profiles and sculpted grooves of the sporty hatch and the sophisticated sedan create an immediate and powerful impression.

Designed for a life that's always in motion, the Accent is bigger than its predecessor and combines dynamic performance and economy with the highest levels of comfort and safety.

The ultra-modern ergonomic and roomy interior delivers exceptional creature comforts, while every aspect of your driving experience is enriched through innovation and the use of smart technology.

Just as importantly, with the latest active and passive safety technologies constantly at work to help you maintain control and to protect you in the event of an accident, the Accent has achieved a 5-star ANCAP rating, Australia's highest possible occupant safety rating.


In short, the Accent is everything you could ask for in a small, yet highly energetic car. Put yourself in the driver's seat and get ready to have the style, comfort and technology of the Accent set your world in motion.

Muscular and athletic, sleek and stylish.


The Accent has been designed to make an immediate – and very powerful – impression.

Its streamlined and aerodynamic profile is based on Hyundai's 'fluidic sculpture' design language. The sleek dynamic lines and deep grooves create a sporty futuristic look with a sense of constant motion.


The strongly defined wheel arches and an assertive stance combine with its distinctive hexagonal grille and aggressive headlamps to give the Accent an eye-catching and commanding road presence.



Projector beam headlamps with LED daytime running lamps (SR Only)



Fog Lamp (SR Only)



Side mirrors with integrated indicator

The sportiness of a hatch

Fluidic sculpture lines deliver a robust and sporty appearance that's strengthened further by aesthetically pleasing vertical combination lights. An aerodynamically designed spoiler is standard on the SR.

The sophistication of a sedan

With its increased length, low roofline and sloping rear window line, the Accent sedan has a stylish and sophisticated coupe-like appearance that stands out from its competitors.



Accent SR Hatch in Veloster Red shown



Accent Active Sedan in Dazzling Blue shown

All the safety you'd expect from a big car.

At Hyundai, we believe maximum safety should come as standard. That's why we designed the Accent to achieve Australia's highest possible safety rating – 5-Star ANCAP – thanks to an array of active and passive safety features. So the only thing you need do is sit back and enjoy the ride.



Overseas model interior shown

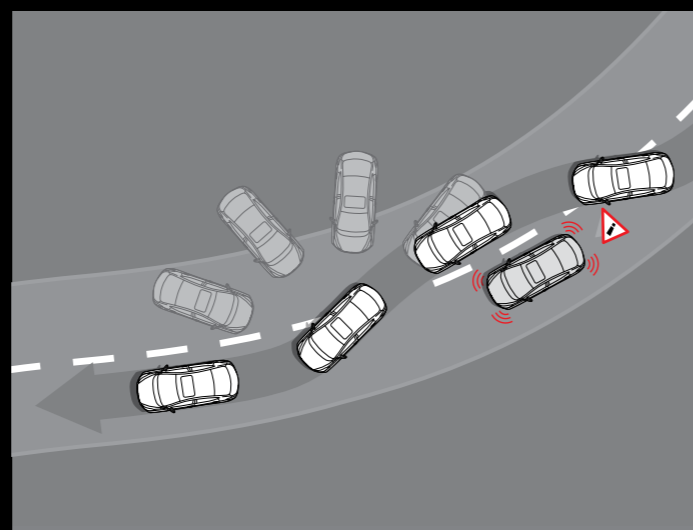


Reinforced high-tensile strength steel monocoque

Built strong to protect

To reinforce the safety of our vehicles, and your protection in the event of an accident, all of our vehicles built in Korea, have high-tensile strength steel applied to safety-critical areas and are produced by Hyundai from iron ore sourced from Australia and Brazil. The steel is so hard it must first be heated to 900C before stamping. The chassis has been built tough and includes a Collision Load Dispersion mechanism that, in the event of an impact, distributes the force in three ways to maintain the integrity of the cabin. Other reinforcements such as rear-door side-impact beams provide even further levels of protection.

Across all grades, six airbags are standard – driver & front passenger, driver & front passenger side thorax airbags, as well as curtain airbags for front and rear seat passengers. To help reduce the possibility of whiplash injury, height adjustable head restraints are included for all occupants.

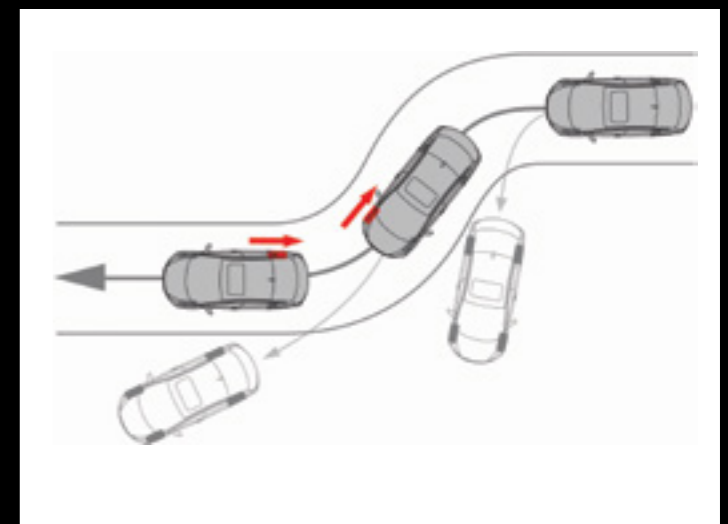


VSM (Vehicle Stability Management)

Loaded with Active Safety Technology

The Accent also boasts a comprehensive range of advanced active safety technologies that are constantly working behind the scenes, ready to spring into action and assist you during a difficult driving situation. The Electronic Stability Control (ESC) with Traction Control System (TCS) senses a loss of wheel grip (such as when skidding) and then applies individual wheel braking, together with engine and transmission adjustments, to help you get the vehicle back on its intended course. Likewise, in slippery conditions or sudden cornering scenarios, the state-of-the-art Vehicle Stability Management (VSM) system helps maintain control of the vehicle by applying steering assistance, to help guide you to the correct steering position.

The Accent's 4-wheel disc brakes (standard across all grades) team with the Anti-lock Braking System (ABS), Electronic Brakeforce Distribution (EBD) and Brake Assist System (BAS) to automatically vary the amount of brakeforce applied to each of the vehicle's brakes depending on road conditions, speed and load.



ESC incorporating TCS





A smart, feature-packed interior.

The striking good looks and energetic styling that make the Accent such a head-turner from the outside, continue inside with a modern and ergonomic interior that's generously packed with features and comforts.

The symmetrical Y-shaped upper dash is drawn with sweeping lines that flow downward toward the centre stack and shift lever, creating a focus for the intuitive 5" touch screen audio system that provides radio and MP3 capability, 6 speakers and Siri® Eyes Free (iOS) / Google Now™ (Android) voice activation. You'll also have all the connectivity you want with iPod®, USB, AUX inputs whilst Bluetooth® connectivity^ allows hands-free calling and audio streaming.

Every control and button has been positioned for easy use and navigation, so you can focus on driving but still get the most fun out of every trip.

Siri® and iPod® are registered trademarks of Apple Inc.

Google Now™ is a trademark of Google Inc.

Bluetooth® is a registered trademark of Bluetooth SIG, Inc.

^Please check your Bluetooth® device's capabilities to ensure compatibility.

Overseas model interior shown



ACCENT SR

Driven by fun.

The Accent SR takes everything you love about the Accent Hatch, and turns it up a notch. More style, more fun and 39% more power – delivered by a 1.6 GDI petrol engine, paired with 6-speed transmissions. Specifically tuned for Australian driving conditions, the Accent SR delivers better handling, and thus a more responsive and exciting driving experience all round.

Best of all, the SR has the looks to match its performance. With LED daytime running lamps, 16" machined face sports alloy wheels and an accented rear spoiler, it brings a distinctive sporty style to the streets. Are you ready for some fun?

Details that make the difference.

From its stylish exterior through to its hi-tech interior, the Accent is kitted out with all the latest technology and high quality features.



Accent SR Hatch in Veloster Red



Accent Active Hatch in Vitamin C



Accent Active Sedan in Sleek Silver



Fog Lamps

Distinctively styled fog lamps are integrated into the side character line to provide additional illumination in low visibility conditions. (SR only)



Side Mirrors with LED Indicator Repeaters

Large side view mirrors with LED side repeaters enhance safety by providing greater visibility of your intentions when turning or changing lanes.



Sunglass Holder

A convenient overhead storage binnacle helps keep your sunglasses safe from being lost or scratched.



Keyless Entry

Lock and unlock your Accent without taking the key from your pocket – perfect for when your hands are full.



iPod®, Aux & USB Support

Everything the Accent driver will need to stay perfectly tuned and fully connected while on the road.



Steering Wheel Controls

All your favourite controls are now at your fingertips – including audio features – so you can enjoy total convenience without having to take your hands off the wheel.



Be connected

Enjoy hassle-free access to all your devices via a 5" multimedia touchscreen audio system with MP3 capability, 6 speakers & Siri® Eyes Free (iOS) / Google Now™ (Android) voice activation.

There is also an AUX/USB audio input that offers iPod® compatibility* and Bluetooth® connectivity providing you with hands free calling.



Trip Computer

An onboard computer gives you useful driving information such as journey time and distance to empty.



Safety Power Window

Front and rear power windows offer enhanced convenience, while the driver's window also features a one-touch auto up/down function. The power window switches are illuminated so you can easily find them, while safety sensors on the driver's window automatically reverse the window's direction when they sense an obstacle in the way.

Siri® and iPod® are registered trademarks of Apple Inc. Google Now™ is a trademark of Google Inc. Bluetooth® is a registered trademark of Bluetooth SIG, Inc. *Please check your Bluetooth® device's capabilities to ensure compatibility.

Colour the way you move.

With a wide and vivid colour palette to choose from, the Accent makes a smart, sophisticated and contemporary statement on the road.

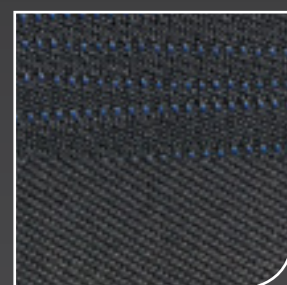


Accent Active Sedan in Veloster Red shown

Exterior Colour



Interior Colour



Black woven cloth



Machine Faced 16" Alloy Wheel (SR only)

14" Steel Wheel (Active only)

*Available on Active model only.

HYUNDAI GENUINE ACCESSORIES

Hyundai Genuine Accessories can enhance your driving pleasure and ownership pride by adding extra ease and enjoyment to your lifestyle pursuits.

All Hyundai Genuine Accessories are backed by a 5-year warranty if purchased at the time of a new Hyundai vehicle and fitted by an authorised Hyundai dealer.†

Hyundai Genuine Accessories	Hatch		Sedan
	Active	SR	Active
Technology			
Auxiliary Cable	○	○	○
iPad® Holder ¹	○	○	○
Interior			
Tailored Carpet Floor Mats (set of 4)	○	○	○
Dash Mat	○	○	○
Cargo Liner	○	○	○
Fabric Rear Bumper Protector	○	○	○
Portable Cooler ² - (12 volt, 15 litre)	○	○	○
Cargo Organiser	○	○	○
Exterior			
Headlight Protectors (set of 2)	○	○	○
Bonnet Protector	○	○	○
Tinted Stylevisors (set of 4)	○	○	○
Front Mudflaps ³ (set of 2)	○	○	○
Rear Mudflaps ³ (set of 2)	○	○	○
Towbar, Towball and Trailer Wiring Harness ⁴	○	○	-
Styling			
14" Alloy Wheels (sold separately, tyres not incl.)	○	-	○
16" Alloy Wheels (sold separately, tyres not incl.)	○	-	○
Boot Lid Spoiler	-	-	○
Interior Lighting	○	○	○
Roof Racks & Lifestyle			
Whisperbar™ Quiet Roof Racks ⁵	○	○	○
Roof Mounted Bike Carrier	○	○	○
Thule® Bike Rack (wheel on)	○	○	○
Roof Mounted Kayak Holder	○	○	○
Ski & Snowboard Carrier	○	○	○
Surfboard Carrier	○	○	○
Safety			
First Aid Kit (4 Pockets)	○	○	○
Front Park Assist ⁶	○	○	○
Rear Park Assist ⁶	○	○	○

○ = Optional - = Not available



Cargo Liner

- Protects your boot
- High Quality



Boot Lid Spoiler

- Sleek and Sporty
- Contoured to your car



Towbar, Towball & Trailer Wiring Harness⁴

- Engineered to suit Australian conditions
- Trouble-free towing



Tailored Carpet Floor Mats (set of 4)

- Contoured and Colourfast
- Driver's side locating clip



Tinted Stylevisors (set of 4)

- Reduces fogging without you getting wet
- Slimline and UV-resistant



Front & Rear Mudflaps³ (set of 4)

- Helps protect paintwork
- Tough wearing



Headlight Protectors (set of 2)

- UV-resistant
- Durable



Rear Park Assist⁶

- Automatic activation
- Four Sensor System



Surfboard Carrier⁷

- Holds up to 2 boards
- Secure



Bike Carrier⁷

- Roof Mounted
- Secure



Whisperbar™ Quiet Roof Racks⁵

- Tested to Australian Standards
- Strong and Secure



Ski & Snowboard Carrier⁷

- Secured by a double lock function
- Push-button release for easy access

- The iPad® holder has been designed to hold iPad® 1, 2 or 3 securely. To ensure occupants are protected in the event of a collision, the screen protector must be fitted to the iPad® when in use. iPad® not included.
- Only suitable for use with retractable seatbelt.
- Please note that Mudflaps cannot be fitted in conjunction with a Full Body Kit or Rear Skirt.
- Maximum ball download 50kg. Towing capacity = 900kg braked, 850kg Auto & 900kg Manual unbraked. Towbar capacity subject to regulatory requirements, towbar design, vehicle design and towing equipment limitations.
- Load capacity = 75kg distributed evenly over 2 bars.
- Park Assist is designed as driver assist aid only and should not be used as a substitute for skilled driving and safe parking practices. While the Park Assist Sensors monitor objects on approach, there may be occasions where blind spots affect the sensitivity of the sensors and as a result, the area into which the vehicle is heading must be visually monitored by the driver at all times while parking.

†All Hyundai Genuine Accessories are subject to warranty conditions. See your nearest Hyundai Dealer or visit our website at www.hyundai.com.au for full warranty terms and usage recommendations. Accessories pictured are all sold separately at an additional cost.



Genuine Accessories



The Hyundai Accent Active Hatch model featured above in Sleek Silver is accessorised with Hyundai Genuine Whisperbar™ Quiet Roof Racks⁵, Surfboard Carrier, Tinted Stylevisors (set of 4), Bonnet Protector, Headlight Protectors (set of 2), Towbar, Towball and Trailer Wiring Harness⁴, Front Mudflaps³, Rear Mudflaps³, 16" Alloy Wheels and Rear Park Assist (4 head)⁶. All sold separately at an additional cost. Surfboard not included.