

# Sonata.







Overseas model shown

# Exceptional standards.

We have one goal – to be Australia’s most loved car company. And to get there, we’re driven by a simple philosophy that life’s most incredible moments shouldn’t be reserved for a select few. Everyone should be able to experience an exciting and enjoyable drive.

So how do we make that happen? We start by pushing our own boundaries, by making premium the new standard. And by engineering the most enjoyable ride possible.

Power. Technology. Space. Sonata is the car that gives you more. From style to safety, it confidently ticks every box on your checklist.

You can be sure we’ve put it through its paces. With an extensive local development program, the Sonata is perfectly suited to Australian conditions. Korean engineering and Australian testing – a global contribution to this local hero.



**Sonata.**



# Safety first, and always.

Your family's safety comes first, everytime. That's why the Sonata boasts the maximum 5 star ANCAP rating, and comes with 6 airbags for all-round protection.

The Sonata's top-of-the-range safety features inspire confidence in whoever's behind the wheel. The rear view camera gives you the benefit of (active) hindsight on your multimedia screen, while the parking sensors guide you to an expert park each time.

Hyundai SmartSense™<sup>1</sup> is constantly working to help protect you too. Every feature in this suite of intelligent safety technologies has one thing in common – they've been developed to help you be alert to (and avoid) any dangers around you.

From vehicles suddenly approaching as you reverse or change lanes, to letting you know when your own attention strays from the road, Hyundai SmartSense™<sup>1</sup> helps you keep near misses far away.



Overseas model shown

**Left:** Rear parking sensors  
**Middle:** Rear view camera  
**Right:** Smart Cruise Control<sup>2</sup>

<sup>1</sup> Hyundai SmartSense™: is a registered trademark of Hyundai Motor Company. Safety features are not a substitute for attentive driving. Only available on the Premium variant.  
<sup>2</sup> Smart Cruise Control and Blind Spot Detection: only available on Premium variant.



Hyundai SmartSense™

Blind Spot Detection<sup>2</sup>

Sonata.



# Real power for the real world.

In the urban jungle, it's good to have some serious grunt under the bonnet when you need it.

You'll find plenty of power in the Sonata's 2.4L petrol engine<sup>1</sup>, or you can add even more with the 2.0L turbo engine<sup>2</sup> on Premium variants, delivering a solid 180 kW of power (at 6,000 RPM) and 353Nm of torque. The Premium variant also gets a new upgrade with an 8-speed automatic transmission<sup>2</sup> for efficiency and fuel economy<sup>3</sup>.

But that's not the only thing we've added. A smart feature which allows you to choose from 4 settings - Comfort, Sport, Eco and Smart<sup>2</sup> - depending on your conditions and driving style. If you want a sportier experience, paddle shifters at the bottom of the steering wheel put you back in charge.

1. 2.4L petrol engine: only available on Active variant  
2. 2.0L turbo petrol engine, 8-speed automatic transmission and 'Smart' Drive Mode: only available on Premium variant  
3. Source: Australian Design Rule 81/02 static laboratory combined average city and highway cycle test. Real world fuel consumption will vary depending on a combination of driving habits, the condition of the vehicle, and other factors such as road, traffic and weather conditions. ADR 81/02 test results are meant for comparison purposes only.



#### 2.4L petrol engine

**138** Maximum power  
kW/6,000 rpm

**241** Maximum torque  
Nm/4,000 rpm

#### 2.0L turbo petrol engine

**180** Maximum power  
kW/6,000 rpm

**353** Maximum torque  
Nm/1,350-4,000 rpm



# Turn heads.

The Sonata emerges with a distinguished new look. The redesign features a sportier front and rear, along with black mirror caps<sup>1</sup> for an extra touch of glamour.

Hyundai's trademark of the new cascading front grille also comes in a mesh pattern on Premium variants – along with 18" alloy wheels<sup>1</sup> for a sporty, quality finish.

Around the back, sculpted rear LED combination lamps<sup>1</sup> and a curvier boot design means you'll always look good from any angle.



**Top:** Black mirror caps<sup>1</sup>  
**Bottom:** Mesh cascading front grille<sup>1</sup>

**Top:** 18" alloy wheels<sup>1</sup>  
**Bottom:** LED daytime running lamps<sup>2</sup>



<sup>1</sup> Black mirror caps, Mesh cascading front grille, 18" alloy wheels and rear LED combination lamps: only available on Premium variant  
<sup>2</sup> Premium variant displayed.





8" touchscreen.  
Overseas model shown

# Comfort, remembered.

Step into your Sonata and you'll find yourself in deceptively spacious surrounds. Upgrade to Premium and it's more like penthouse living. Sink back into luxury leather appointed seats<sup>1</sup> that remember your comfort preference (with the Integrated Memory System<sup>2</sup>), and enjoy the best views in town with the panoramic glass sunroof<sup>2</sup>.

We've got technology covered too, thanks to the 8" touchscreen navigation system and steering wheel mounted controls that help you navigate life – along with the roads.



**Left:** Electronic parking brake<sup>2</sup>  
**Middle:** Steering wheel mounted controls  
**Right:** Integrated Memory System<sup>2</sup>

1. **Leather appointed seats** means parts of the seats have a combination of genuine and artificial leather, but are not wholly leather. Only available on Premium variant.  
2. **Integrated Memory System, panoramic glass sunroof and electronic parking brake:** only available on Premium variant.



# Forward thinking.

The Sonata is the tech hub that travels with you. From the hands-free Smart Boot and rain sensing wipers<sup>1</sup> - even the smallest details are designed with your busy modern life in mind.

Stay comfortable in the heated and ventilated front seats<sup>1</sup> that keep you snug in winter and cool in summer, and cater to different passengers' tastes with dual zone climate control for when one temperature doesn't fit all.

In a world that never stops, the Sonata keeps your family on track. Sat Nav and SUNA Live Traffic<sup>2</sup> help you reach your destination sooner, while Apple CarPlay<sup>3</sup> and Android<sup>TM</sup> Auto let you safely play music and make calls. You'll also find a wireless smartphone charging<sup>5</sup> pad in the centre console to easily recharge without the need for cables.



**Left:** Apple<sup>TM</sup> Carplay<sup>3</sup>  
**Middle:** Ventilated front seats<sup>1</sup>  
**Right:** Rain sensing wipers<sup>1</sup>

<sup>1</sup> Rain sensing wipers, heated and ventilated front seats: only available on Premium variant  
<sup>2</sup> SUNA<sup>TM</sup> live traffic updates: SUNA<sup>TM</sup> live traffic channel coverage is available in the following metropolitan areas only: Adelaide, Brisbane, Canberra, Gold Coast, Melbourne, Perth and Sydney.  
<sup>3</sup> Apple CarPlay<sup>TM</sup> functionality requires software update. Apple CarPlay<sup>TM</sup> requires iPhone 5<sup>th</sup> or subsequent model (lightning cable) in order to operate. Apple<sup>®</sup> and iPhone<sup>®</sup> are registered trademarks of Apple Inc.  
<sup>4</sup> Android<sup>TM</sup> Auto requires a device with Android 5.0 operating system or subsequent version in order to operate  
<sup>5</sup> Wireless smartphone charging: required Qi-enabled smartphone or adapter to operate. Only available on Premium variant.



Wireless smartphone charging<sup>5</sup>





Overseas model shown

Sonata.



# Variants.

Life is about choice – so we've created two different Sonata variants that'll let you take to the road the way you want to.



Overseas model shown

## Active.

**Engine and transmission**  
2.4 litre petrol (automatic)



### Key specifications:

#### Safety

- Electronic Stability Control (ESC) including:
  - Anti-lock Braking System (ABS),
  - Brake Assist System (BAS)
  - Electronic Brakeforce Distribution (EBD)
  - Hill-start Assist Control (HAC)
  - Traction Control System (TCS)
  - Vehicle Stability Management (VSM)
- 6 airbags
- Rear parking assist sensors
- Rear view camera

#### Interior and technology

- 8" touchscreen with satellite navigation
- SUNA Live Traffic Updates<sup>1</sup>
- Apple Carplay™<sup>2</sup> and Android™<sup>3</sup> Auto compatibility

- Bluetooth®<sup>4</sup> connectivity
- AUX/USB input with iPod®<sup>5</sup> compatibility
- Smart key with push button start
- Paddle shifters
- Drive Mode (Comfort, Eco, Sport)
- Dual zone climate control with auto defog function
- Cloth seats

#### Exterior and technology:

- Smart Boot (hands-free opening)
- LED daytime running lamps
- Cascading front grille - strips
- LED courtesy lights in front door handles
- Automatic dusk sensing headlamps with escort and welcome function
- 17" alloy wheels



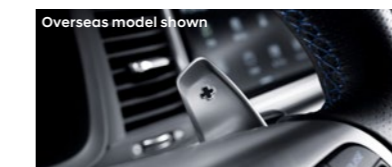
17" alloy wheels



Apple Carplay™<sup>2</sup>



Rear view camera



Paddle shifters

## Premium.

**Engine and transmission**  
2.0 litre turbo petrol (automatic)



### Key specifications above Active:

#### Safety

- Hyundai SmartSense™<sup>6</sup> including:
  - Blind Spot Detection (BSD)
  - Driver Attention Alert (DAA)
  - Lane Change Assist (LCA)
  - Lane Departure Warning System (LDWS)
  - Rear Cross Traffic Alert (RCTA)
  - Smart Cruise Control (SCC)
- Front park assist sensors

#### Interior and technology

- Wireless smartphone charging<sup>7</sup>
- Electronic parking brake (EPB)
- Rain sensing wipers
- Integrated Memory System (IMS) on driver's seat and exterior mirrors

- Rear door curtains (manual type)
- Auto dimming rear view mirror
- Heated and ventilated front seats
- Sports alloy pedals
- Drive mode (Comfort, Eco, Sport & Smart)
- Leather appointed seats<sup>8</sup> with grey stitching

#### Exterior and technology

- LED headlights
- Panoramic glass sunroof
- Cascading front grille – mesh pattern
- LED puddle lights in side mirror
- 18" alloy wheels



18" alloy wheels



Blind Spot Detection



Ventilated front seats



Panoramic glass sunroof

1. **SUNA™ live traffic updates:** SUNA™ live traffic channel coverage is available in the following metropolitan areas only: Adelaide, Brisbane, Canberra, Gold Coast, Melbourne, Perth and Sydney. 2. **Apple CarPlay™** functionality requires software update. Apple CarPlay™ requires iPhone 5<sup>th</sup> or subsequent model (lightning cable) in order to operate. Apple® and iPhone® are registered trademarks of Apple Inc. 3. **Android Auto** requires a device with Android 5.0 operating system or subsequent version in order to operate. 4. **Bluetooth®** is a registered trademark of Bluetooth SIG, Inc. Please check your Bluetooth® device's capabilities to ensure compatibility. 5. **iPod®** is a registered trademark of Apple computer Inc. 6. **Hyundai SmartSense™:** is a registered trademark of Hyundai Motor Company. Safety features are not a substitute for attentive driving. 7. **Wireless smartphone charging:** Requires a Qi-enabled smartphone or adapter to operate. 8. **Leather appointed seats** means parts of the seats have a combination of genuine and artificial leather, but are not wholly leather.

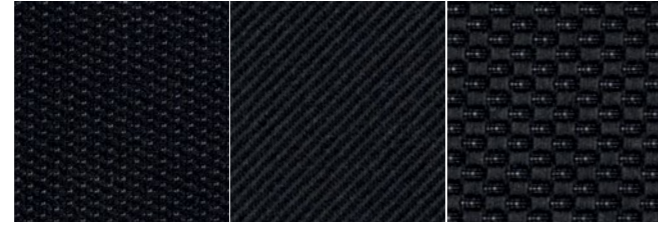


# Style, your way.

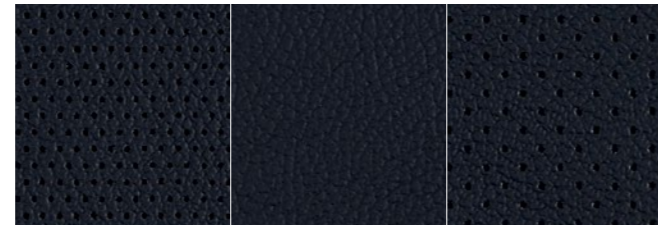
Your new Hyundai stands out. That's why we've developed an interior and exterior colour range that highlights the qualities of the Sonata: sleek, stylish and refined.

After all, everyone's different. From the colour of the paint to the shade of the trim, this is your opportunity to complement your personality. This is the time to fit the Sonata right into your everyday life.

## Sonata Interiors



Cloth interior



Black leather appointed<sup>2</sup> seats

## Sonata colour combination chart<sup>1</sup>

Model	White Cream (WC9 Mica) Standard paint	Ion Silver (N9V Metallic) Premium paint	Lunar Grey (U9G Metallic) Premium paint	Pantera Grey (PG9 Mica) Premium paint	Midnight Black (NB9 Mica) Premium paint	Valentine Red (V9R Met/Mica) Premium paint	Grand Blue (NU9 Mica) Premium paint	Blue Sapphire (PH7 Mica) Premium paint
<b>Active</b>								
Black cloth	•	•		•	•		•	
<b>Premium</b>								
Black leather <sup>2</sup>	•		•	•	•	•		•

1. Colours shown are indicative only and may vary due to the printing process. Premium paint are an additional cost.  
 2. **Leather appointed seats** means parts of the seats have a combination of genuine and artificial leather, but are not wholly leather.  
 3. **Panoramic glass sunroof**: only available on Premium variant

## Let the light in



Panoramic glass sunroof<sup>3</sup>



Overseas model shown



# Hyundai Genuine Accessories.

Your Sonata isn't just a car. It's an extension of you. So make it as unique as you are, with Hyundai Genuine Accessories<sup>^</sup>.



**Top:** Tailored Carpet Floor Mats (set of 4)  
**Bottom:** Fabric Rear Bumper Protector

**Top:** Portable Cooler<sup>3</sup>  
**Bottom:** Cargo Organiser



Overseas model shown

Genuine Accessories	Active	Highlander
<b>Technology</b>		
Auxiliary Cable <sup>1</sup>	•	•
New iPad <sup>®</sup> Holder <sup>2</sup>	•	•
<b>Interior</b>		
Tailored Carpet Floor Mats (set of 4)	•	•
Dash Mat	•	•
Carpet Cargo Mat		
Cargo Liner	•	•
Fabric Rear Bumper Protector	•	•
Portable Cooler <sup>3</sup> (12 volt, 15 litre)	•	•
Cargo Organiser	•	•
<b>Exterior</b>		
Tinted Stylevisors (set of 4)	•	•
Towbar, Towball & Trailer Wiring Harness <sup>4</sup>	•	•
<b>Roof Racks and Lifestyle</b>		
Roof Racks <sup>5</sup>	-	•
Roof Mounted Bike Carrier <sup>6</sup>	•	•
Thule Bike Rack (Wheel on) <sup>7</sup>	•	•
Roof Mounted Kayak Holder <sup>6</sup>	•	•
Ski and Snowboard Carrier <sup>6</sup>	•	•
Surfboard Carrier <sup>6</sup>	•	•
<b>Safety</b>		
First Aid Kit (4 Pocket)	•	•

<sup>^</sup>All Hyundai Genuine Accessories are subject to warranty conditions. See your nearest Hyundai Dealer or visit [www.hyundai.com.au](http://www.hyundai.com.au) for full warranty terms and usage recommendations.  
<sup>1</sup> Suitable for non-Apple<sup>®</sup> devices, such as MP3 players.  
<sup>2</sup> iPad<sup>®</sup> is a registered trademark of Apple Inc. The iPad<sup>®</sup> holder has been designed to hold iPad<sup>®</sup> 1, 2, 3, 4 & iPad Air securely. To ensure occupants are protected in the event of a collision, the screen protector must be fitted to the iPad<sup>®</sup> when in use. iPad<sup>®</sup> not included.  
<sup>3</sup> 12 volt 15 litre. Only suitable for use with retractable seatbelt. Universal Picture - Different model showing.  
<sup>4</sup> Maximum ball download 70kg. Towing capacity 1300kg braked & 400kg unbraked. Towbar capacity subject to regulatory requirements, towbar design, vehicle design and towing equipment limitations.  
<sup>5</sup> Load capacity = 75kg evenly distributed over 2 bars. Roof racks should be removed when not in use.  
<sup>6</sup> Requires fitment of roof racks at additional cost.  
<sup>7</sup> Thule is a registered trademark of Thule Sweden AB. requires fitment of roof racks at additional cost.





# Relax, we'll take it from here.

There's a reason why our iCare program has won awards<sup>1</sup>. We built iCare around one simple, innovative idea. That comprehensive on-the-road care should come standard with every car – not just as an “optional extra”.

Our five-year, unlimited kilometre warranty<sup>2</sup> means you've got the freedom to go ahead and drive without having to keep an eye on the odometer.

Imagine knowing the maximum price of your next scheduled service, before pulling into the service centre. That's the advantage of our Lifetime Service Plan<sup>3</sup> – a clever Hyundai initiative that gives you transparency and peace of mind for the life of your car. No hidden fees and surprises.

And since every new Hyundai is built to the highest standards, we've got the confidence to offer comprehensive customer service without exception – or as we like to say, amazing as standard. And that includes 24/7 Roadside Support<sup>4</sup> for ten years when you service with us.

iCare



1. 2015 Canstar Blue Innovation Excellence Awards (5 Stars). 2. **5 year/unlimited km warranty:** Applies to new passenger vehicles used for private/domestic purposes. Excludes vehicles used at any time for “commercial application” as defined in the vehicle warranty policy, for which a 5 year/130,000km (whichever occurs first) warranty applies. Refer to full warranty terms & conditions for details and exclusions. 3. **Lifetime Service Plan:** For the benefit of Hyundai owners, Hyundai provides online quotes which specify the maximum price applicable for a vehicle's next scheduled maintenance service at a participating authorised Hyundai Dealer and using genuine Hyundai parts (where required). Online quotes are available at [hyundai.com.au](http://hyundai.com.au), apply for a stated effective period only and may change after that effective period without notice. Standard scheduled maintenance services are of limited scope. The benefit of online quotes is available for all Hyundai's, for their lifetime. 4. **Roadside Support Plan:** Complimentary 12 months Roadside Support when you purchase a new Hyundai passenger vehicle (excluding rental buyers). Further Roadside Support extensions are available, each for 12 months from the date of a scheduled maintenance service at a participating authorised Hyundai Dealer (unless vehicle is more than 108 months (9 years) from the original new car sale date, in which case entitlement to Roadside Support ends when vehicle reaches 120 months (10 years) from original new car sale date).

Sonata.





## Big help, for little Aussies.

Every time a new car is sold at one of our Dealerships, both Hyundai and the Dealer will donate part of the sale price to Hyundai Help for Kids.™

Hyundai Help for Kids™ offers funding to child-focused organisations and charities working to improve the lives of children all over Australia – from supporting community initiatives, to providing much-needed medical equipment.

So when you buy a Hyundai, you're buying more than just a car. Together with Hyundai Help for Kids,™ you're empowering thousands of young Australians and giving them a better future.



Hyundai Help for Kids™ is a registered trademark of Hyundai Motor Company.

**Sonata.**



# Australia, in our DNA.

We're one of the biggest car manufacturers in the world  
– and one of the fastest growing global car brands.

We're also the only car company in the world producing  
its own steel, because we know the best steel makes for  
the strongest cars.

That's why we source the majority of our high quality iron  
ore from right here, in Australia's backyard. So now,  
when you buy a new Hyundai, you know you're driving  
a car that's directly connected to home.



**Sonata.**



Hyundai Sonata		
Engine	2.4 GDi	2.0 T-GDi
Engine family	Theta II	Theta II
Configuration	Transverse front engine, front wheel drive	Transverse front engine, front wheel drive
Cylinder capacity	2.4 litres (2,359 cc)	2.0 litres (1,998 cc)
Number of cylinders	4 in-line	4 in-line
Valve system	16 valves, dual overhead cam (DOHC) with Dual Continuously Variable Valve Timing (D-CVVT) & mechanical lash adjusters	16 valves, dual overhead cam (DOHC) with Dual Continuously Variable Valve Timing (D-CVVT) & mechanical lash adjusters
Intake system	2-step variable induction system	2-step variable induction system, twin-scroll turbocharger
Maximum power	138 kW @ 6,000 RPM	180 kW @ 6,000 RPM
Maximum torque	241 Nm @ 4,000 RPM	353 Nm @ 1,350-4,000 RPM
Fuel system	GDi (Gasoline Direct Injection), Petrol	T-GDi (Turbo Gasoline Direct Injection), Petrol
Fuel type	91 RON (ULP), E10 compatible	91 RON (ULP), E10 compatible
Emissions standard	Euro 5	Euro 5
Bore x stroke	88.0 mm x 97.0 mm	86.0 mm x 86.0 mm
Compression ratio	11.3 : 1	10.0 : 1
Transmission	2.4 GDi	2.0 T-GDi
Automatic	6 speed automatic, electronically controlled with lock up torque converter	8 speed automatic, electronically controlled with lock up torque converter
Gear ratio	Automatic	Automatic
1st	4.212	4.808
2nd	2.637	2.901
3rd	1.800	1.864
4th	1.386	1.424
5th	1.000	1.219
6th	0.772	1.000
7th	-	0.799
8th	-	0.648
Reverse	3.385	3.425
Final	2.885	3.320
Engine/transmission availability	2.4 GDi	2.0 T-GDi
	Automatic	Automatic
Active	•	-
Premium	-	•
Steering	2.4 GDi	2.0 T-GDi
Type	Column mounted Motor Driven Power Steering (C-MDPS), rack & pinion	
Minimum turning circle diameter between kerbs / walls	10.9 m	
Number of steering wheel turns lock to lock	2.78	
Suspension	2.4 GDi	2.0 T-GDi
Front	MacPherson strut with Amplitude Selective Dampers (ASD)	
Rear	Multi-link with Amplitude Selective Dampers (ASD)	

Hyundai Sonata		
Brakes	2.4 GDi	2.0 T-GDi
System	Dual-diagonal, split circuit, power assisted with Electronic Brakeforce Distribution (EBD) and Brake Assist System (BAS)	
Front brake type	Ventilated disc	
Front disc dimensions	305mm x 25mm	320mm x 28mm
Rear brake type	Solid disc	
Rear disc dimensions	284 x 10 mm	
Weight	2.4 GDi	2.0 T-GDi
	Automatic	Automatic
Kerb weight - lightest	1500 kg	1560 kg
Kerb weight - heaviest	1587 kg	1645 kg
Gross Vehicle Mass (GVM)	2060 kg	2120 kg
Towing capacity	2.4 GDi	2.0 T-GDi
	Automatic	Automatic
Braked	1300 kg	
Unbraked	400 kg	
Maximum towball weight	70 kg	
Fuel consumption*	2.4 GDi	2.0 T-GDi
	Automatic	Automatic
Combined (L/100km)	8.3	8.5
Urban (L/100km)	12.1	12.2
Extra Urban (L/100km)	6.3	6.3
CO2 - combined (g/km)	194	198
Fuel tank volume	70	
*Source: Australian Design Rule 81/02 static laboratory combined average city and highway cycle test. Real world fuel consumption will vary depending on a combination of driving habits, the condition of the vehicle, and other factors such as road, traffic and weather conditions. ADR 81/02 test results are meant for comparison purposes only.		
Dimensions	Active	Premium
Exterior		
Length	4855 mm	
Width	1865 mm	
Height	1475 mm	
Wheelbase	2805 mm	
Wheel track - front / rear	1602 mm / 1609 mm	1597 mm / 1604 mm
Minimum ground clearance (based on kerb weight)	135 mm	
Interior		
Head room front / rear	1025 mm / 975 mm	985 mm / 960 mm
Hip room front / rear	1404 mm / 1426 mm	
Leg room front / rear	1155 mm / 905 mm	
Shoulder room front / rear	1470 mm / 1435 mm	
Cargo area - VDA/SAE	510 L / 462 L	

Hyundai Sonata		
Wheels & tyres	Active	Premium
Wheel type	Alloy	Alloy
Wheel dimensions	17 x 7.0J +50	18 x 7.5J +52.5
Tyre dimensions	215/55 R17 94W (Continental ContiPremiumContact™ 5)	235/45 R18 98Y (Michelin Pilot Sport 3)
Spare wheel type	Full size alloy	
Driving convenience	Active	Premium
Cruise control	•	•
Electronic Parking Brake (EPB) (with auto hold function)	-	•
One touch turn signal - 3, 5, or 7 flashes	•	•
Rain sensing wipers	-	•
Smart Key with push button start	•	•
Steering wheel mounted controls - audio, phone, cruise control, & trip computer	•	•
Tilt & telescopic steering column	•	•
Driving engagement	Active	Premium
Drive Mode - 3 settings (Comfort, Eco, Sport)	•	-
Drive Mode - 4 settings (Comfort, Eco, Sport, Smart)	-	•
Paddle shifters	•	•
Active safety	Active	Premium
Electronic Stability Control (ESC) including;		
Anti-lock Braking System (ABS)	•	•
Brake Assist System (BAS)	•	•
Electronic Brakeforce Distribution (EBD)	•	•
Hill-start Assist Control (HAC)	•	•
Traction Control System (TCS)	•	•
Vehicle Stability Management (VSM)	•	•
Hyundai SmartSense™ including;		
Blind Spot Detection (BSD)	-	•
Driver Attention Alert (DAA)	-	•
Lane Change Assist (LCA)	-	•
Lane Departure Warning System (LDWS)	-	•
Rear Cross Traffic Alert (RCTA)	-	•
Smart Cruise Control (SCC)	-	•
Other features		
Emergency Stop Signal (ESS)	•	•
Park Assist System (PAS) - front (4 sensors, with guidance display)	-	•
Park Assist System (PAS) - rear (4 sensors, with guidance display)	•	•
Rear view camera with dynamic guide lines	•	•

Hyundai Sonata		
Passive safety	Active	Premium
Airbags		
Front airbags - driver & front passenger	•	•
Side (thorax) airbags - driver & front passenger	•	•
Side curtain airbags - 1st & 2nd rows	•	•
Doors		
Impact sensing auto door unlock	•	•
Rear door child safety locks	•	•
Seatbelts		
Pretensioners, load limiters & height adjustable upper mounts on front seat belts	•	•
Seat belt reminder - front & rear seatbelts	•	•
Seating		
Height adjustable front head restraints with tilt function	•	•
Height adjustable rear head restraints	•	•
ISOFIX child restraint anchors (rear outboard seats)	•	•
Top tether child restraint anchors (rear) - 3 anchors	•	•
Security	Active	Premium
Security system		
Active lock/unlock operation (user configurable)	•	•
Anti-theft alarm	•	•
Central locking	•	•
Engine immobiliser	•	•
Remotes		
Smart Key remote - 2x	•	•
Multimedia system	Active	Premium
Functions		
Apple CarPlay <sup>1</sup> & Android Auto <sup>2</sup> compatibility	•	•
Bluetooth® phone connectivity <sup>3</sup>	•	•
Satellite navigation	•	•
SUNA™ Live Traffic Updates <sup>4</sup>	•	•
Touch screen - 8" display	•	•
Speakers		
Audio system - 6 speakers	•	•
Audio/media sources		
AM / FM radio	•	•
AUX / USB audio input with iPod <sup>5</sup> compatibility	•	•
Bluetooth <sup>®3</sup> audio streaming	•	•

#### Notes:

1. Apple CarPlay™ functionality requires software update. Apple CarPlay™ requires iPhone 5® or subsequent model (lightning cable) in order to operate. Apple® and iPhone® are registered trademarks of Apple Inc.
2. Android Auto requires a device with Android 5.0 operating system or subsequent version in order to operate.
3. Bluetooth® is a registered trademark of Bluetooth SIG, Inc. Please check your Bluetooth® device's capabilities to ensure compatibility.
4. SUNA™ live traffic channel coverage is available in the following metropolitan areas only: Adelaide, Brisbane, Canberra, Gold Coast, Melbourne, Perth and Sydney.
5. iPod® is a registered trademark of Apple computer Inc.

#### Key:

- = Feature is available on trim
- = Feature is not available on trim



Hyundai Sonata		
Occupant comfort & convenience	Active	Premium
<b>Upholstery/trim</b>		
Leather <sup>1</sup> appointed seats	-	•
Leather <sup>1</sup> appointed steering wheel & gear knob	•	•
<b>Front seats</b>		
Driver's seat - height adjustable	•	•
Driver's seat - power adjustable - 12-way (including 4-way lumbar support)	-	•
Passenger's seat - height adjustable	•	•
Passenger's seat - power adjustable - 8-way (including 2-way lumbar support)	-	•
Integrated Memory System (IMS) on driver's seat and exterior mirrors	-	•
Front centre console armrest	•	•
Front centre console storage cubby - power outlets - 2 x 12V outlets	•	•
Front centre console - wireless charging pad (Qi standard) <sup>2</sup>	-	•
Grip handles - 1x (passenger)	•	•
<b>Rear seats</b>		
Centre fold down armrest with cupholders	•	•
Grip handles - 2x	•	•
Rear of centre console - power outlet 1 x 12V	•	•
<b>Windows/shades</b>		
Panoramic glass sunroof - dual panel with tilt and slide front panel and power sunblind	-	•
Power windows - front & rear	•	•
One touch window up & down function with anti-pinching safety feature - driver's window	•	•
One touch window up & down function with anti-pinching safety feature - front passenger's window	-	•
Rear door curtains (manual type)	-	•
<b>Doors/boot/tailgate</b>		
Smart Boot (hands-free opening)	•	•
Vision & sight	Active	Premium
<b>Interior mirror</b>		
Electro-chromatic Mirror (ECM) - auto-dimming	-	•
<b>Exterior mirrors</b>		
Heated	-	•
Power adjustable	•	•
Power folding with auto fold function	-	•
<b>Instrument cluster/driving displays</b>		
Instrument cluster - 3.5" TFT LCD with trip computer & digital speedometer	•	-
Supervision cluster - 4.2" TFT colour LCD with trip computer & digital speedometer	-	•

Hyundai Sonata		
Ventilation & heating	Active	Premium
<b>Air conditioning</b>		
Climate control - dual zone with auto defog function	•	•
Cabin air filter	•	•
Cooling/heating vents - rear centre console	•	•
Cooling/heating ducts - rear floor	•	•
<b>Front seats</b>		
Air ventilated front seats	-	•
Heated front seats	-	•
<b>Other features</b>		
Heated rear windshield	•	•
Exterior styling	Active	Premium
<b>Front</b>		
Front grille - horizontal strips	•	-
Front grille - dark chrome mesh	-	•
Front grille surround - chrome	•	-
Front grille surround - dark chrome	-	•
Front grille inserts - chrome	•	-
<b>Side</b>		
Door frame & beltline moulding - chrome	•	-
Door frame & beltline moulding - satin chrome	-	•
Exterior door handles - chrome	•	-
Exterior door handles - dark chrome	-	•
Mirror caps - black	-	•
Waistline moulding - dark chrome	-	•
<b>Rear</b>		
Dual exhaust tips - chrome	•	•
Interior Styling	Active	Premium
<b>Treatments</b>		
Black headlining	-	•
Coloured stitching - grey (seats, steering wheel, front armrest and gearshift boot)	-	•
Alloy effect finish (door handles)	•	•
Alloy effect inserts (air vents, audio and ventilation controls)	•	•
<b>Materials</b>		
Premium materials - door centre trim	•	•
Premium materials - dash cluster hood	-	•
Door scuff plates - stainless steel with 'Sonata' etching	-	•
Sports pedals - alloy	-	•

Hyundai Sonata		
Lighting	Active	Premium
<b>Exterior lighting - front</b>		
Daytime Running Lights (DRL) - LED	•	•
Headlight functions - automatic dusk sensing with escort and welcome	•	•
Headlight type - LED (low/high beam)	-	•
Headlight type - projector beam	•	-
Positioning lights - LED	•	•
<b>Exterior lighting - rear</b>		
High mount stop light (HMSL) - LED	•	•
Rear combination lights - LED (bulb indicator and reverse lights)	-	•
<b>Exterior lighting - others</b>		
Courtesy lights - LED, in front door handles	•	•
Puddle lights - LED, in side mirrors	-	•
Safety reflectors - integrated in bumper (rear)	•	•
Side repeaters - LED, integrated into side mirrors	•	•
<b>Interior lighting - front</b>		
Ambient lighting - centre console	•	•
Front room lights and map lights	•	-
Front room lights and map lights - LED	-	•
Glovebox compartment light	•	•
Vanity mirror lights	•	•
<b>Interior lighting - rear</b>		
Centre room light	•	-
Rear room lights and map lights (outboard) - LED	-	•
<b>Interior lighting - others</b>		
Cargo area light	•	•
Interior light fade-out delay	•	•
Safety lights - integrated in doors (front)	•	•


Hyundai Sonata		
Storage Solutions	Active	Premium
<b>Front seats</b>		
Centre console - deluxe type	-	•
Cup holders - centre console	•	•
Front seat back pockets	•	•
Glovebox compartment	•	•
Retractable sunglasses compartment	•	•
Ticket holders - sunvisors (driver and front passenger)	•	•
<b>Rear seats</b>		
Coat hooks - 3x	•	-
Coat hooks - 4x	-	•
Cup holders - armrest	•	•
Rear seating split folding - 60:40	•	•
<b>Others</b>		
Doors - map pockets and bottle bulges (front and rear)	•	•

**Key:**  
• = Feature is available on trim      - = Feature is not available on trim

**Notes:**  
1. Finishes specified as leather may contain elements of genuine leather, polyurethane leather (leather substitute) or man-made materials, or a combination thereof.  
2. Wireless smartphone charging requires a Qi-enabled smartphone or adapter in order to operate.



 Like us at [facebook.com/hyundaiaustralia](https://facebook.com/hyundaiaustralia)

 Follow us at [twitter.com/hyundaiaus](https://twitter.com/hyundaiaus)

**Hyundai Motor Company Australia**

394 Lane Cove Road, Macquarie Park, NSW Australia 2113

[www.hyundai.com.au](http://www.hyundai.com.au)

Hyundai Motor Company (HMC) and the Hyundai Motor Company Australia (HMCA) each reserve the right to alter vehicle specifications and equipment levels without notice. Some equipment featured on the cars in this brochure may not be available in Australia or may be optional. To the extent permitted by law, neither HMC nor HMCA shall be liable to any person as a result of reliance on the content of this brochure. Please consult your Hyundai Dealer for the latest specifications, equipment levels, options, prices, colours and vehicle availability. Metallic and mica paint are optional extras.  
Note: information in this brochure is current as at 01/10/17. Part No. LF1117B