

**do**™ full on  
**fun**

**BRZ**  
**2018**





Do full on fun.  
Find out more at [subaru.com.au/brz](http://subaru.com.au/brz)

## do full on fun

Crank up the volume and keep it fun. Do impromptu get togethers and long drives – just for the hell of it. Because the Subaru BRZ was made for spontaneity.

A classic sports coupe, Subaru BRZ delivers it all – without compromise. Choose it for the looks alone, but love it for the power it gives you. Agile and controlled, yet thrilling to drive. The sleek, low centre of gravity design and rear wheel drive dynamics keep you connected to the road. Add our legendary Boxer engine and you're ready to rumble.

Subaru BRZ puts excitement front and centre, and teases you to do more. Do the back roads and do away with conventions. But whatever you do – drive more, walk less.

# do it all

Bring on the power and the glory of the Subaru BRZ with its 2.0 litre horizontally-opposed Boxer engine. Hit the open road with 152kW (MT only) of grunt at your disposal and bucket loads of technology thrown in for good measure. Upgraded infotainment gets serious with a 7" touchscreen, Apple CarPlay™ and Android Auto connectivity<sup>1</sup>, satellite navigation and Siri® compatibility all at your command to dial up the fun factor.

Subaru BRZ Premium steps it up a level with heated driver and front passenger seats and the appeal of high-end Alcantara® seats with leather<sup>2</sup> accents and BRZ branding.

## BRZ features

### Performance

- + 2.0-litre horizontally-opposed Boxer engine
- + 6-speed manual transmission or 6-speed automatic transmission with manual mode
- + Maximum power output: 152kW@7000rpm (MT) 147kW@7000rpm (AT)
- + Maximum torque: 212Nm@6400-6800rpm (MT) 205Nm@6400-6600rpm (AT)

### Interior

- + Air-conditioning – dual zone climate control
- + Sports bucket seats – driver and front passenger

- + Cloth seat trim – black with red stitching
- + Leather<sup>2</sup> steering wheel and gear shift
- + Paddle gear shifters (AT)
- + Sports pedals
- + Smart key with push-start ignition
- + Manual seat height lifter – driver
- + Folding rear seat – one piece

### Exterior

- + 17" alloy wheels with full size spare
- + Power-folding door mirrors
- + Shark fin antenna
- + Self-levelling LED headlights with auto off (dusk-sensing)
- + Daytime running lights – LED
- + Front and rear fog lights
- + Dual tail pipes

### Entertainment / Technology

- + Multi-Information Display unit (MID)
- + Integrated infotainment system with 7" LCD touchscreen
- + Satellite navigation
- + Siri® compatibility
- + Apple CarPlay™ and Android Auto connectivity<sup>1</sup>
- + Bluetooth®<sup>3</sup> wireless technology
- + USB connections (x2)
- + Rear view reverse camera

## BRZ Premium

### Additional features

- + Alcantara® seats with leather<sup>2</sup> accents and BRZ logo
- + Heated seats – driver and front passenger

Do it all.  
Explore the range at [subaru.com.au/brz](http://subaru.com.au/brz)

1. Compatible Apple or Android device required. 2. Some parts of the seating or trim are not full natural leather. 3. Bluetooth® is a registered trademark of Bluetooth SIG Inc. System operation ability is subject to Bluetooth® wireless technology specification of individual device.



# do life in hyperdrive

Subaru BRZ tS takes the best of STI motorsports technology and raises the bar – both inside and out. Performance enhancements push the BRZ tS to the edge, with robust specially-tuned SACHS suspension supporting sharp handling and enviable driving stability. The sports flair continues with red Brembo brake calipers dueling for attention with dynamic 18" STI alloy wheels. Topping it off is a striking tS branded sports grille and a rear spoiler that means business. Subaru BRZ tS is spirited driving as good as it gets.

## BRZ tS features

### Performance

- + 2.0-litre horizontally-opposed Boxer engine
- + 6-speed manual transmission or 6-speed automatic transmission with manual mode
- + Maximum power output:  
152kW@7000rpm (MT)  
147kW@7000rpm (AT)
- + Maximum torque:  
212Nm@6400-6800rpm (MT)  
205Nm@6400-6600rpm (AT)
- + SACHS suspension

### Interior

- + Air-conditioning – dual zone climate control
- + Sports bucket seats – driver and front passenger

- + Alcantara® seats with red leather<sup>1</sup> accents and tS logo
- + Leather<sup>1</sup> steering wheel and gear shift with STI logo
- + Paddle gear shifters (AT)
- + Red seat belts
- + Sports pedals
- + Smart key with push-start ignition
- + Manual seat height lifter – driver
- + Heated seats – driver and front passenger

### Exterior

- + 18" STI alloy wheels
- + Black power-folding door mirrors
- + Black shark fin antenna
- + Self-levelling LED headlights with auto off (dusk-sensing)
- + Daytime running lights – LED

- + Rear fog light
- + Dual tail pipes
- + Red Brembo brake calipers
- + Exterior grade badges
- + Rear spoiler
- + tS sports grille

### Entertainment / Technology

- + Multi-Information Display unit (MID)
- + Integrated infotainment system with 7" LCD touchscreen
- + Satellite navigation
- + Siri® compatibility
- + Apple CarPlay™ and Android Auto connectivity<sup>2</sup>
- + Bluetooth®<sup>3</sup> wireless technology
- + USB connections (x2)
- + Rear view reverse camera

Do life in hyperdrive.  
Explore the range at [subaru.com.au/brz](http://subaru.com.au/brz)

1. Some parts of the seating or trim are not full natural leather. 2. Compatible Apple or Android device required. 3. Bluetooth® is a registered trademark of Bluetooth SIG Inc. System operation ability is subject to Bluetooth® wireless technology specification of individual device.



# do information overload

With a sleek, race-inspired cockpit, it's time to play. Do your drive in total control, with direct engine feedback translated via the instrument cluster. The steering wheel features grippy cross-stitched leather<sup>1</sup> and conveniently mounted driver controls. The cabin bristles with new technology and infotainment thanks to a 7" touchscreen, including the very latest in satellite navigation, Apple CarPlay™ and Android Auto connectivity<sup>2</sup>.



**Heated front seats**  
BRZ Premium and BRZ tS



**USB connectivity**  
All BRZ variants



**Push-start ignition**  
ALL BRZ variants  
(tS with STI logo)



**Paddle gear shifters**  
All BRZ variants (AT)

1. Some parts of the seating or trim are not full natural leather.  
2. Compatible Apple or Android device required.



**BRZ Premium**

# be inspired

## Interior

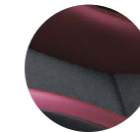
On the inside Subaru BRZ features black cloth with red stitching. Alcantara® trim with leather<sup>1</sup> accents is standard on the BRZ Premium and Alcantara® trim with red leather<sup>1</sup> accents is standard on the BRZ tS.



**Cloth**  
Black



**Alcantara® with leather<sup>1</sup> accents**  
Black



**Alcantara® with red leather<sup>1</sup> accents**  
Black



**Crystal White**  
Pearl



**Lapis Blue**  
Pearl



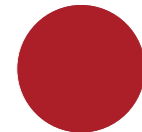
**Dark Grey**  
Metallic



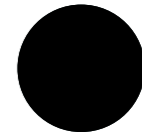
**Ice Silver**  
Metallic



**WR Blue**  
Pearl



**Pure Red**



**Crystal Black**  
Silica

## Exterior

The colour you choose for your Subaru makes a bold statement about who you are. So we've made sure you've got lots of ways to express yourself – with a wide range of colours to make your Subaru more... you.

1. Some parts of the seating or trim are not full natural leather.

Note: Paint colours are representative only and subject to variation due to the printing process.

# why BRZ?

## Boxing clever

### Our famous Subaru Boxer engine

While most engines stand vertically, ours lay flat. The famous Subaru Boxer engine delivers handling like no other engine can. Sitting horizontally in the engine bay, it moves like a boxer's fists with a punch and counterpunch action. Lightweight, low and flat, it makes for perfect balance and a much lower centre of gravity. It creates less noise and vibration too. All of this means better on-road handling for you. More stability. More performance. More fun. And a more confident drive.

## Finest safety

### 5 star ANCAP safety across the range

With spirit, quality and imagination comes some serious safety innovation. We want every Subaru to be amongst the safest cars on the road. Engineered full of cutting-edge technologies and the most intelligent design features. It's not a Subaru unless it carries the maximum 5 star ANCAP<sup>1</sup> safety rating.

## Eyes in the back of your head

### Rear view reverse camera

Manoeuvring back into a tight side street? Family driveway littered with toys? Reverse with confidence, thanks to our rear view reverse camera technology. The rear view reverse camera is like having eyes in the back of your head. This greatly improves your visibility and reduces the risk of bumps and scrapes. Rear view reverse camera standard on all Subaru BRZ variants.

## Control you can count on

### Vehicle Dynamics Control

Enjoy having the confidence of precision engineering that helps to maintain control in sticky situations. Subaru's Vehicle Dynamics Control (VDC) utilises a range of sophisticated vehicle sensors and advanced safety technologies, which automatically act to help to maintain stability and control. This electronic Driver Assist system incorporates Subaru's Electronic Stability Control, Anti-lock Braking System, Electronic Brakeforce Distribution, Brake Assist and Traction Control System.



1. The Australasian New Car Assessment Program (ANCAP) gives consumers consistent information on the level of occupant protection provided by vehicles in serious front and side crashes.

## BRZ specifications<sup>1</sup>

MODEL		BRZ	BRZ Premium	BRZ tS
<b>Transmission</b>				
6-speed manual transmission (MT)		•	•	•
6-speed automatic transmission (AT)		•	•	•
<b>Engine</b>				
Engine type		Horizontally-opposed Boxer engine		
Valve mechanism		DOHC with Dual AVCS		
Bore x stroke	mm	86.0 x 86.0		
Capacity	cc	1998		
Compression ratio		12.5:1		
Fuel tank capacity	litres	50		
Fuel system		Direct injection and port injection		
Fuel requirement (min)	RON	98		
<b>Performance<sup>2</sup></b>				
Maximum power output (DIN)	kW/rpm	152kW@7000rpm (MT) 147kW@7000rpm (AT)		
Maximum torque (DIN)	Nm/rpm	212Nm@6400-6800rpm (MT) 205Nm@6400-6600rpm (AT)		
Electronic Throttle Control system (ETC)		Drive-by-wire		
Fuel consumption (ADR 81/02) For comparison purposes only. Real world results may vary <sup>3</sup> :				
	combined	l/100km	8.4 (MT) / 7.1 (AT)	8.6 (MT) / 7.8 (AT)
	urban	l/100km	11.5 (MT) / 9.6 (AT)	11.8 (MT) / 11.2 (AT)
	extra urban	l/100km	6.7 (MT) / 5.7 (AT)	6.7 (MT) / 5.9 (AT)
CO <sub>2</sub> emissions (ADR 81/02)	combined	(g/km)	194 (MT) / 164 (AT)	199 (MT) / 181 (AT)
<b>Transmission</b>				
Gear ratio				
	1st		3.626 (MT) / 3.538 (AT)	
	2nd		2.188 (MT) / 2.060 (AT)	
	3rd		1.541 (MT) / 1.404 (AT)	
	4th		1.213 (MT) / 1.000 (AT)	
	5th		1.000 (MT) / 0.713 (AT)	
	6th		0.767 (MT) / 0.582 (AT)	
Gear ratio – reverse			3.437 (MT) / 3.168 (AT)	
Final reduction gear ratio			4.300 (MT) / 4.100 (AT)	

1. Subaru Australia reserves the right to change mechanical specification and equipment levels without notice. 2. All performance data measured using 95RON as required by Australian Design Rule 81/02. Vehicles tested in accordance with ADR 81/02. Acceleration test performed under controlled conditions. 3. Fuel consumption figures quoted are measured in accordance with Australian Design Rule 81/02 and are for comparison purposes only. Real world results may vary based on individual driving circumstances e.g. traffic conditions, driving style, vehicle conditions, fuel quality, climatic conditions etc.

## BRZ specifications<sup>1</sup>

MODEL		BRZ	BRZ Premium	BRZ tS
<b>Steering</b>				
Steering		Electric power assistance rack and pinion		
Minimum turning circle	m	10.8		
<b>Suspension</b>				
Type	Front	MacPherson strut type		
	Rear	Double wishbone type		
<b>Brakes</b>				
Type	Front	Ventilated disc brake		
	Rear	Ventilated disc brake		
Brake booster type		10.5" single		
ABS		4-channel, 4-sensor ABS with Electronic Brakeforce Distribution		
<b>Wheels and Tyres</b>				
Tyre manufacturer		MICHELIN Primacy HP		MICHELIN Pilot Sport 4
Tyres		215/45 R17 87W		215/40 R18 85Y
Rim size		17x7J		18X7.5J
Wheels		17"		18"
Spare wheel		17"		
<b>Measurement</b>				
Overall length	mm	4240		
Overall width	mm	1775		
Overall height	mm	1320		
Wheel base	mm	2570		
Front track	mm	1520		
Rear track	mm	1540		
Minimum ground clearance <sup>2</sup>	mm	130		
Cargo volume – rear seat up	litres	218		
Tare mass <sup>3</sup>	kg	1242 (MT) / 1264 (AT)		1255 (MT) / 1277 (AT)
Seating capacity		4		

1. Subaru Australia reserves the right to change mechanical specification and equipment levels without notice. 2. Ground clearance at kerb weight. 3. Vehicle tare mass varies according to the types of optional equipment included.

## BRZ features<sup>1</sup>

MODEL	BRZ	BRZ Premium	BRZ tS
<b>Safety Rating</b>			
5 star ANCAP <sup>2</sup> safety rating (maximum 5)	•	•	•
<b>Collision Avoidance</b>			
Vehicle Dynamics Control system (VDC) featuring:	•	•	•
Electronic Stability Control (ESC)	•	•	•
Anti-lock Braking System (ABS)	•	•	•
Electronic Brakeforce Distribution (EBD)	•	•	•
Brake Assist	•	•	•
Traction Control System (TCS)	•	•	•
Hill Start Assist	•	•	•
4-wheel disc brakes	•	•	•
Brembo 4pot front caliper with Brembo Logo, ventilated disc brake			•
Brembo 2pot rear caliper with Brembo Logo, ventilated disc brake			•
Rear view reverse camera	•	•	•
<b>Collision Protection</b>			
SRS <sup>3</sup> airbags – dual front, dual front side, curtain and driver's knee	•	•	•
Front seat belts with pretensioners and load limiters	•	•	•
Seat belt warning lights – driver and front passenger	•	•	•
3 point A/ELR rear seat belts	•	•	•
Height adjustable front seat headrests	•	•	•
<b>Child Safety</b>			
Child seat anchor points (x2)	•	•	•
ISOFIX anchor points (x2)	•	•	•
<b>Intelligent Driving Dynamics</b>			
Cruise Control	•	•	•
Electronic Throttle Control system (ETC)	•	•	•
SACHS suspension			•
<b>Chassis and Mechanism</b>			
Front and rear stabiliser	•	•	•
Red shrink-painted intake manifold	MT only	MT only	MT only
<b>Exterior</b>			
Body coloured mirrors and door handles	•	•	Black mirrors
Body coloured rear garnish	•	•	•
Red painted Brembo brake calipers			•

1. Subaru Australia reserves the right to change mechanical specification and equipment levels without notice. 2. The Australasian New Car Assessment Program (ANCAP) gives consumers consistent information on the level of occupant protection provided by vehicles in serious front and side crashes. 3. SRS: Supplemental Restraint System. Effective when used in conjunction with seat belts.

## BRZ features<sup>1</sup>

MODEL	BRZ	BRZ Premium	BRZ tS
Detachable module type windscreen wipers	•	•	•
Door mirrors – power-folding	•	•	Black painted
Dual tail pipes	•	•	•
Engine cover	AT only	AT only	AT only
Full size spare wheel	•	•	
Rear diffuser	•	•	•
UV glass – door, rear quarter and rear windscreen	•	•	•
Rear spoiler			•
Shark fin antenna	•	•	Black painted
Side garnish	•	•	With STI logo
Spacesaver spare wheel			•
tS and STI badges			•
Tail pipe covers	•	•	•
17" alloy wheels	•	•	
18" alloy wheels			With STI logo
<b>Lighting – Exterior</b>			
Daytime running lights - LED	•	•	•
Front fog lights - LED	•	•	
Headlights – dusk-sensing	•	•	•
Headlights – self-levelling LED with auto off	•	•	•
Rear fog light	•	•	•
Rear LED combination lights	•	•	•
Rear LED stoplight	•	•	•
Welcome lighting	•	•	•
<b>Lighting – Interior</b>			
Cabin and cargo area lights	•	•	•
<b>Air-conditioning</b>			
Air-conditioning – dual zone climate control	•	•	•
Anti-dust filter	•	•	•
Front and side demisters	•	•	•
Rear windscreen demister – electric	•	•	•
<b>Security</b>			
DataDotDNA <sup>®2</sup> security system	•	•	•
Immobiliser security system	•	•	•

1. Subaru Australia reserves the right to change mechanical specification and equipment levels without notice. 2. DataDotDNA<sup>®</sup> is a theft deterrent not a theft prevention mechanism.



## BRZ features<sup>1</sup>

MODEL	BRZ	BRZ Premium	BRZ tS
<b>Instrumentation and Controls</b>			
Adjustable steering wheel – height and telescopic	•	•	•
Instrument cluster	•	•	With STI logo
Manual mode	AT only	AT only	AT only
One touch lane change indicator	•	•	•
Paddle gear shifters	AT only	AT only	AT only
Sports pedals	•	•	•
Cruise control on steering column	•	•	•
Steering wheel controls:	•	•	•
Audio	•	•	•
Bluetooth <sup>®2</sup>	•	•	•
MID	•	•	•
<b>Multi-Function Displays</b>			
Multi-Information Display unit (MID) featuring:	•	•	•
4.2" LCD screen	•	•	•
Journey and fuel information	•	•	•
Engine information	•	•	•
G monitor	•	•	•
Stopwatch	•	•	•
Warning display	•	•	•
Twin trip meter (switchable)	•	•	•
<b>Storage</b>			
Cupholders – centre console	•	•	•
Door pockets with integrated bottle holder – front	•	•	•
Seat back pocket – front passenger side	•	•	•
<b>Convenience</b>			
12V/120W power jacks (x2)	•	•	•
Boot unlock on remote central locking keys	•	•	•
Illuminated sunvisors with vanity mirrors – driver and front passenger	•	•	•
Interior fuel lid lock release	•	•	•
Intermittent variable speed front windscreen wipers	•	•	•
Power steering, mirrors and windows	•	•	•
Remote central locking	•	•	•
Smart key and push-start ignition	•	•	With STI logo

1. Subaru Australia reserves the right to change mechanical specification and equipment levels without notice. 2. Bluetooth<sup>®</sup> is a registered trademark of Bluetooth SIG Inc. System operation ability is subject to the Bluetooth<sup>®</sup> wireless technology specification of individual device.

## BRZ features<sup>1</sup>

MODEL	BRZ	BRZ Premium	BRZ tS
<b>Interior Trims</b>			
Carpet trim – black	•	•	•
Side scuff plate	•	•	•
Door panel trim			Grand Luxe
Leather <sup>2</sup> steering wheel and gear shift	With red stitching	With red stitching	With STI logo
Seat trim – cloth	With red stitching	With red stitching	With red stitching
Seat trim – Alcantara <sup>®</sup> with leather <sup>2</sup> accents		With BRZ logo	With tS logo
Seat trim colour – black	•	•	•
Red seat belts			•
Sports bucket seats – driver and front passenger	•	•	•
<b>Seating Extras</b>			
Folding rear seat – one piece	•	•	•
Heated seats – driver and front passenger		•	•
Manual seat height lifter – driver	•	•	•
<b>Entertainment</b>			
Integrated infotainment system featuring:	•	•	•
AM/FM radio	•	•	•
Satellite navigation	•	•	•
Siri <sup>®</sup> compatibility	•	•	•
Apple CarPlay <sup>™</sup> + Android Auto <sup>™</sup> connectivity <sup>3</sup>	•	•	•
6 speakers	•	•	•
7" LCD touchscreen	•	•	•
Bluetooth <sup>®4</sup> wireless technology with:	•	•	•
Handsfree mobile communication	•	•	•
Audio streaming	•	•	•
Voice command recognition	•	•	•
USB connections (x2)	•	•	•
<b>Warranty and Service</b>			
3 Year/Unlimited Kilometre Warranty	•	•	•
3 Year/60,000 Kilometre Capped Price Servicing Program <sup>5</sup>	•	•	•
12 Month Roadside Assistance Program <sup>6</sup>	•	•	•

1. Subaru Australia reserves the right to change mechanical specification and equipment levels without notice. 2. Some parts of the seating or trim are not full natural leather. 3. Compatible Apple or Android device required. 4. Bluetooth<sup>®</sup> is a registered trademark of Bluetooth SIG Inc. System operation ability is subject to the Bluetooth<sup>®</sup> wireless technology specification of individual device. 5. Every brand new 2018 Subaru BRZ comes with our 3 Year/60,000 Kilometre Capped Price Servicing Program. Available at participating Subaru Retailers only and does not apply to rental and some other classes of vehicle. For full Capped Price Servicing Program Terms and Conditions visit [www.subaru.com.au/service/capped-price-servicing](http://www.subaru.com.au/service/capped-price-servicing). 6. Terms and conditions apply. For a full list of benefits, visit [www.subaru.com.au/owner-experience/benefits/program/roadside](http://www.subaru.com.au/owner-experience/benefits/program/roadside).

# do it up to match your drive

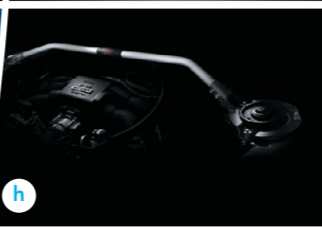
Why hold back when you can customise your Subaru BRZ? Explore our collection of Genuine Subaru Accessories to make your Subaru BRZ stand out from the crowd. Style it up, spec it up and pack more in.

- + Styling Pump up the body image of Subaru BRZ with styling that includes an industrial-look fuel lid garnish, sharp boot lip spoiler and drag reducing rear under diffuser.
- + Protection Coveting your Subaru BRZ is natural, protecting it is easy. Tailor-made to fit like a glove, our range of protection accessories will fend off spills, bumps and scrapes.
- + Security, Convenience and Safety Keep your new wheels secure with a set of wheel lock nuts and make tight parks easy with front corner and reverse parking sensors.
- + STI Performance Parts Tweak the performance of Subaru BRZ for that extra edge. Bring out the beast with performance parts for optimum handling and control. Or spiff it up with aerodynamic spoilers and sports-inspired alloy wheels.

Genuine Subaru Accessories are available from your Subaru Retailer, so be sure to ask about the range when buying your new Subaru BRZ.

 To view our complete range of accessories and pricing online visit [subaru.com.au/brz/accessories](http://subaru.com.au/brz/accessories)





## packs that will inspire you<sup>1</sup>

A passionate performer like the Subaru BRZ demands respect. So boost its street smarts with these carefully curated accessory packs designed to match BRZ's bold and dynamic engineering.

### Styling Pack

The BRZ already has sports style in spades, but this pack takes it to the next level, improving aerodynamics for a better performance, enhanced grip and sleek styling.

- a** Front Under Spoiler
- b** Side Under Spoiler
- c** Rear Side Under Spoiler
- d** Boot Lip Spoiler (Crystal Black)<sup>2</sup>
- e** Rear Under Diffuser

### S Pack<sup>2</sup>

Who said you can't have it all? The BRZ S Pack gives you everything that's great about the Styling Pack plus plus a whole lot more.

- f** Coil Spring Set – Front and Rear (2 required)
- g** Flexible Draw Stiffener (Front)
- h** Flexible Tower Bar
- i** Gear Shift Assembly (MT only)
- j** Duracon Shift Knob (MT only)
- k** Push Start Engine Switch (Red)
- l** ENKEI Alloy Wheel Set (4) – 17" (Black) inc. valves and centre caps



1. Adding a BRZ Accessory Pack will reduce ground clearance.  
2. Not applicable with BRZ tS.

To view our complete range of accessories and pricing online visit [subaru.com.au/brz/accessories](http://subaru.com.au/brz/accessories)

do™

do

# protect your investment

Get out and do more while protecting your Subaru BRZ from the rough and tumble of daily life. From carpet mats to a bumper protector, each of the below accessories are tailored for a perfect fit.

ACCESSORY	Part Number	BRZ	BRZ Premium	BRZ tS
<b>Styling</b>				
1 Fuel Lid Garnish	J1210CA800	•	•	•
2 Rear Under Diffuser	E5610CA000	•	•	•
<b>Protection</b>				
3 Carpet Mat Set	J501ACA000	•	•	•
4 Boot/Spare Wheel Carpet Mat	SAT9001	•	•	•
5 Rear Bumper Protector (Clear Film)	E771SCA700	•	•	•
6 Rear Step Panel	J1210CA900	•	•	•
7 Bootlip and Bumper Protector	SAT6003	•	•	•
<b>Security</b>				
8 Wheel Lock Nuts	B327EYA000	•	•	•

To view our complete range of accessories and pricing online visit [subaru.com.au/brz/accessories](http://subaru.com.au/brz/accessories)

•	Applicable
	Not Applicable



1



2



3



4



5



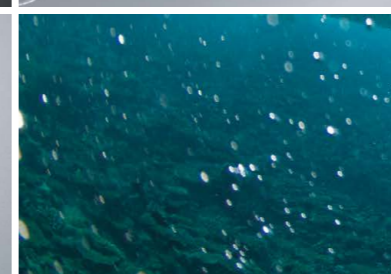
6

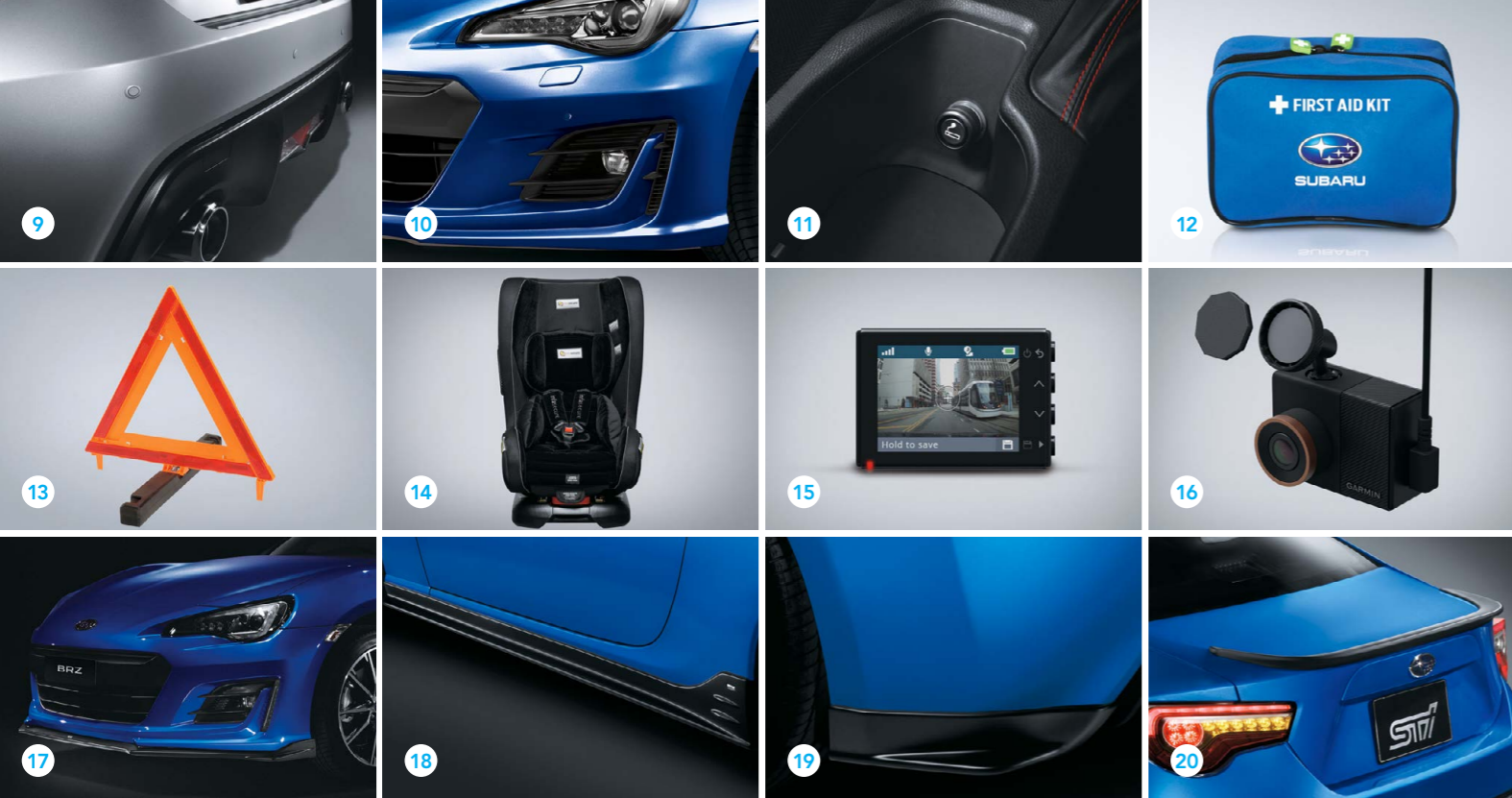


7



8





# relax, we've thought of everything

From the simplest wheel lock nuts, to intelligent front corner and reverse parking sensors, you can be sure we have you covered.

ACCESSORY	Part Number	BRZ	BRZ Premium	BRZ tS
<b>Convenience and Safety</b>				
9 Reverse Sensors	SAC9100##	•	•	•
10 Front Corner Parking Sensors (Reverse Sensors Required)	SAC9200##	•	•	•
11 Cigarette Lighter	H6710CA100	•	•	•
12 First Aid Kit	PR7670	•	•	•
13 Safety Triangle	SAT9007	•	•	•
14 Baby Seat – Kompressor Beyond Midnight	SAC7004	•	•	•
15 Garmin Dash Cam 55	0100175011	•	•	•
16 Magnetic Mount (Additional)	0101253000	•	•	•
<b>STI Performance Parts</b>				
17 Front Under Spoiler <sup>1</sup>	ST96020AS040	•	•	•
18 Side Under Spoiler <sup>1</sup>	ST96030AS021	•	•	•
19 Rear Side Under Spoiler <sup>1</sup>	ST96031AS000	•	•	•
20 Boot Lip Spoiler (Crystal Black)	ST96050AS030-S	•	•	•

To view our complete range of accessories and pricing online visit [subaru.com.au/brz/accessories](http://subaru.com.au/brz/accessories)

1. Will reduce ground clearance.

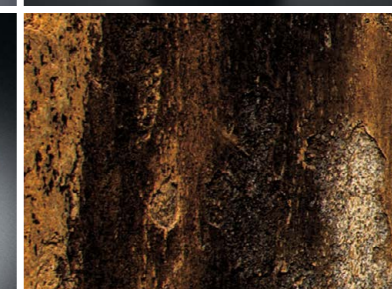
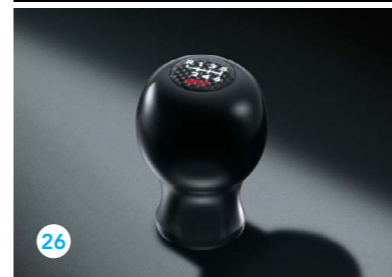
# kick it into overdrive

Up the ante on your Subaru BRZ by enhancing its street appeal, cockpit aesthetics and driver dynamics with STI branded performance parts.

ACCESSORY	Part Number	BRZ	BRZ Premium	BRZ tS
<b>STI Performance Parts</b>				
21 Flexible Tower Bar	ST20502AS000-S	•	•	•
22 Coil Spring Set – Front (2 required) <sup>1</sup>	ST20330AS000-S	•	•	
23 Coil Spring Set – Rear (2 required) <sup>1</sup>	ST20380AS000-S	•	•	
24 ENKEI Alloy Wheel Set (4) – 17" (Black) including valves and centre caps	STIK5400	•	•	
25 Gear Shift Lever Assy (MT only)	ST35010AS000-S	•	•	•
26 Duracon Shift Knob (MT only)	ST35022ST260-S	•	•	•
27 Push Start Engine Switch (Red)	ST83031ST030	•	•	
28 Flexible Draw Stiffener (Front)	ST20118AS000-S	•	•	
29 Valve Cap Set	ST28102ST030	•	•	•
30 Wheel Lock Nut Set (Black)	ST28170ST020	•	•	•
31 Security Wheel Nut Set	ST28170ST060	•	•	•
32 Sports Oil Filter	ST15208ST010	•	•	•
33 Oil Cap	ST15257ZR010	•	•	•
34 Battery Clamp/Holder	ST82182ST000	•	•	•

To view our complete range of accessories and pricing online visit [subaru.com.au/brz/accessories](http://subaru.com.au/brz/accessories)

1. Will reduce ground clearance.



# welcome to the family

There are cars that simply get you from A to B, and then there are cars that empower you. Buying a Subaru is like embracing life with both hands and knowing that nothing is going to stop you. When you buy a new Subaru you are welcomed into an owner's program that gives you access to a number of benefits.



## Subaru New Car Warranty – 3 Year/Unlimited Kilometres

Every new Subaru is covered by a three year unlimited kilometre manufacturer's national warranty. You can protect your investment further by purchasing an additional Subaru Assured Warranty<sup>1</sup> of up to three years. Visit [subaru.com.au/warranty](http://subaru.com.au/warranty) or ask your Subaru Retailer for more information.

## Subaru Capped Price Servicing

With our Subaru BRZ 3 Year/60,000 Kilometre Capped Price Servicing Program<sup>2</sup>, you'll now know the maximum amount you will

have to pay for your next scheduled service during the Program period. You'll also have peace of mind knowing that specialist Subaru technicians will be looking after your pride and joy using only Genuine Subaru Parts.



## DataDotDNA<sup>®</sup>

Every Subaru is fitted with advanced engine immobilisers and the DataDotDNA<sup>®3</sup> Theft Deterrent System. Microscopic dots are laser-etched with each vehicle's unique Vehicle Identification Number – making it a less attractive target for thieves.

## Three Year Rebate on Theft Insurance Excess

DataDot Technology (Australia) Pty Ltd will pay your theft insurance excess<sup>4</sup> (up to a maximum of \$800 including GST) should your new Subaru be stolen in the first three years of purchase and not recovered within 45 days despite the presence of DataDotDNA<sup>®3</sup> and warning labels.

## 1-Month Health Check and Chat

The 1-Month Health Check and Chat is a free consultation within the first month after delivery of your new Subaru. It allows our Subaru-trained technicians to provide quick vehicle checks, and one of our Service Advisors will answer any of your questions to help ensure an ongoing, worry-free experience.

## My Subaru – online owner's destination

The My Subaru owner's portal is an online destination for owners which provides access to exclusive benefits, tailored content, your vehicle's ownership history and much more. Login to My Subaru, the online destination for Subaru owners that will help you get more out of your vehicle, and more out of your life. Visit [my.subaru.com.au/](http://my.subaru.com.au/)

## Subaru Roadside Assistance

Enjoy 12 months of Australia-wide, standard Roadside Assistance when you purchase your new Subaru. In the unfortunate situation where you need that extra helping hand, our Roadside Assistance will help<sup>1</sup> with arranging a tow, battery service, flat tyre service, fuel delivery and lockout service.

## Subaru Certified Collision Repairer Network

With a dedicated Subaru Certified Collision Repairer<sup>2</sup> helpline available on 1800 737 179, help is available when you need it most. Available 24-hours a day, 7 days a week, help is only a phone call away. Subaru Certified Collision Repairers guarantee that trained specialists will repair your Subaru to strict factory specifications using Genuine Subaru Parts.

# live life without limits

## Genuine Accessories

Genuine Subaru Accessories are designed to enhance your vehicle, are factory approved by Subaru and are protected by the Genuine Subaru Accessories Warranty. For our full range of Subaru BRZ accessories visit [subaru.com.au/brz/accessories](http://subaru.com.au/brz/accessories). For warranty information visit [subaru.com.au/warranty](http://subaru.com.au/warranty) and click on "Genuine Subaru Accessories Warranty".

## Subaru Finance

Subaru Finance<sup>3</sup> provides a range of competitive financial solutions to approved customers. Our finance specialists will help you find a finance package to meet your needs conveniently.

## Subaru Insurance

It's important to enjoy the freedom of owning a Subaru, but it's also important to protect it. A range of Subaru Insurance<sup>4</sup> options provides a variety of choices, including: Subaru Comprehensive Motor Vehicle Insurance, Subaru Value Protect Insurance and Subaru Loan Protection Insurance.

## Subaru Certified Used Cars

Every Subaru Certified Used Car has passed a 120-point quality inspection and comes with a one year unlimited kilometre Subaru Assured Warranty<sup>5</sup> – to complement the balance of a new vehicle warranty or the statutory warranty that remains – from participating Subaru Certified Used Car Retailers.

1. The Subaru Assured Warranty product is issued by the selling Subaru Retailer. Subaru Australia has no liability in respect of this warranty. 2. Every brand new 2018 Subaru BRZ comes with Subaru's 3 Year/60,000 Kilometre Capped Price Servicing Program. Available at participating Subaru Retailers only and does not apply to rental and some other classes of vehicles. For full Capped Price Servicing Terms and Conditions visit [www.subaru.com.au/service/pricing/capped-price-servicing](http://www.subaru.com.au/service/pricing/capped-price-servicing). 3. DataDotDNA<sup>®</sup> is a theft deterrent not a theft prevention mechanism. 4. Vehicles must be registered, comprehensively insured and less than 3 years old. DTA must receive a claim within 45 days of the theft. Terms and conditions apply.

1. Terms and conditions apply. For a full list of benefits, visit [www.subaru.com.au/owner-experience/benefits/program/roadside](http://www.subaru.com.au/owner-experience/benefits/program/roadside). 2. Subaru Certified Collision Repairer network not available in all areas. Call 1800 737 179 or visit [www.subaru.com.au/retailers](http://www.subaru.com.au/retailers) to find your closest Subaru Certified Collision Repairer. 3. Finance provided by Macquarie Leasing Pty Limited ABN 38 002 674 982 Australian Credit Licence Number 394925 trading as Subaru Finance. All applications for credit are subject to Macquarie's normal credit approval criteria. Terms and conditions, fees and charges apply. 4. Subaru Insurance products are issued by Allianz Australia Insurance Limited AFS Licence No. 234 708 ABN 15 000 122 850 (Allianz). In arranging this insurance Subaru (Aust) Pty Limited ABN 95 000 312 792 (Subaru) and the authorised dealers act as agents of Allianz and not as your agent. Neither Subaru nor any of its related companies or appointed authorised retailers have any liability in respect of these policies. 5. The Subaru Assured Warranty product is issued by the selling Subaru Retailer. Subaru Australia has no liability in respect of this warranty.

do™

do

do

do





## BRZ Awards

2013 - Carsales Australia People's Choice Best Performance Car Under \$100,000 (with Toyota 86), Subaru BRZ

2012 - Australasian New Car Assessment Program 5 star (ANCAP) safety rating

- Wheels Car of the Year, Subaru BRZ (with Toyota 86)

- TopGear Australia Fun-est Car of the Year, Subaru BRZ

- Carsales Australia People's Choice Best Performance Car Under \$100,000 (with Toyota 86), Subaru BRZ

- News Limited Carsguide People's Choice Award, Subaru BRZ

- Best Buy for 2012 - Australian automotive website themotorreport.com.au, Subaru BRZ

Subaru Australia reserves the right to vary vehicle specifications and standard features in Australia from those detailed in this brochure. Vehicles shown in this brochure may be fitted with accessories available at additional cost. No part of the brochure can be reproduced without written permission from Subaru Australia. Printed in Australia.

[subaru.com.au](http://subaru.com.au)

© Copyright 2017 – Subaru (Aust) Pty Limited. All rights reserved.  
Subaru (Aust) Pty Limited ABN 95 000 312 792 (Subaru Australia) PO Box 8311, Baulkham Hills NSW 2153 Toll Free: 1800 226 643



**SUBARU**