

do more
Australia

OUTBACK
2018



SUBARU

A young boy is playing in the water, surrounded by many bubbles. The scene is bright and sunny, with a warm, golden light. The boy is shirtless and looking towards the camera with a slight smile. The water is splashing around him, creating a dynamic and joyful atmosphere.

do™

do

Do more Australia.
Find out more at www.subaru.com.au/outback



do

do

do more Australia

Wouldn't it be great if you could do more with your family? If you could throw bikes and boards in the back of the car, and take off for weekends you and the kids will remember forever?

The Subaru Outback is built for road trips and everyday adventures. For the little trips that bring families closer together. With more space, more capability and more comfort, you won't just do more with the new Outback, you'll love doing it.

No wonder it's one of Australia's most popular and award winning SUVs. Just imagine what you could do.



Outback 2.5i

do more together

The new Subaru Outback 2.5i is for families to do more together. Crank more road trip hits from six thumping speakers, a 6.5" LCD touchscreen, Apple CarPlay™ and Android Auto™ connectivity¹. Enjoy more legroom and extra USB charging ports in the back. Lane Keep Assist is also now included across the Outback range, as part of its EyeSight® Driver Assist system.

Outback 2.5i features

Performance

- + 2.5-litre horizontally-opposed Boxer petrol engine
- + Lineartronic™ CVT with manual mode
- + Maximum power output: 129kW@5800rpm
- + Maximum torque: 235Nm@4000rpm
- + SI-Drive – 2 modes

Interior

- + Air-conditioning – dual zone climate control with rear vents
- + Manual seat height lifter – driver
- + One touch lane change indicator
- + Cloth seat trim – choice of black or ivory
- + 60/40 split folding rear seats
- + USB charge port – rear passengers (x2)

Exterior

- + 18" alloy wheels with full size spare
- + Door mirrors with indicators – power-folding
- + Halogen headlights with auto off (dusk-sensing)
- + Front fog lights and LED daytime running lights
- + Rear mud guards
- + Rain-sensing front windscreen wipers
- + Rear door, rear quarter and rear windscreen privacy glass
- + Rear spoiler
- + Black roof rails with integrated cross bars

Entertainment/Technology

- + Multi-Information Display unit (MID)
- + Integrated infotainment system with 6.5" LCD touchscreen

- + Bluetooth®² wireless technology
- + Rear view reverse camera
- + Auto door lock/unlock
- + Apple CarPlay™ and Android Auto™ connectivity¹
- + Auxiliary jack and USB connection
- + EyeSight® Driver Assist system featuring:
 - + Adaptive Cruise Control
 - + Brake Light Recognition
 - + Lane Departure Warning
 - + Lane Keep Assist
 - + Lane Sway Warning
 - + Lead Vehicle Start Alert
 - + Pre-Collision Brake Assist
 - + Pre-Collision Braking System
 - + Pre-Collision Steering Assist
 - + Pre-Collision Throttle Management

1. Compatible Apple or Android device required. 2. Bluetooth® is a registered trademark of Bluetooth SIG Inc. System operation ability is subject to Bluetooth® wireless technology specification of individual device.

pack more in

The Subaru Outback 2.5i Premium packs more in with an 8" LCD touchscreen, satellite navigation, heated (driver and front passenger) leather¹ seats and an electric sunroof. With Subaru's Vision Assist you'll get even more safety features, including Blind Spot Monitor, Side View Monitor, Lane Change Assist and Rear Cross Traffic Alert.

Outback 2.5i Premium features

Performance

- + 2.5-litre horizontally-opposed Boxer petrol engine
- + Lineartronic™ CVT with manual mode
- + Maximum power output: 129kW@5800rpm
- + Maximum torque: 235Nm@4000rpm
- + SI-Drive – 2 modes

Interior

- + Air-conditioning – dual zone climate control with rear vents
- + Auto-dimming rear view mirror
- + Heated front seats
- + One touch lane change indicator
- + 60/40 split folding rear seats
- + Electric lumbar support – driver
- + USB charge port – rear passengers (x2)
- + Leather¹ seat trim – choice of black or ivory
- + 8-way power seats – driver and front passenger (driver with dual memory)
- + Smart key with push-start ignition

Exterior

- + 18" alloy wheels with full size spare
- + Electric sunroof
- + Front fog lights and LED daytime running lights
- + Door mirrors with indicators – heated and power-folding
- + Powered rear gate
- + Rain-sensing front windscreen wipers
- + Rear door, rear quarter and rear windscreen privacy glass
- + Rear spoiler
- + Wheel arch mouldings
- + Front and rear mud guards
- + Black roof rails with integrated cross bars
- + Self-levelling LED headlights with auto off (dusk-sensing)
- + Steering Responsive Headlights (SRH)

Entertainment/Technology

- + Multi-Information Display unit (MID)
- + Integrated infotainment system with 8" LCD touchscreen
- + Satellite navigation
- + Bluetooth^{®2} wireless technology

- + Rear view reverse camera
- + Auto door lock/unlock
- + Apple CarPlay™ and Android Auto™ connectivity³
- + Auxiliary jack and USB connections (x2)
- + EyeSight[®] Driver Assist system featuring:
 - + Adaptive Cruise Control
 - + Brake Light Recognition
 - + Lane Departure Warning
 - + Lane Keep Assist
 - + Lane Sway Warning
 - + Lead Vehicle Start Alert
 - + Pre-Collision Brake Assist
 - + Pre-Collision Braking System
 - + Pre-Collision Steering Assist
 - + Pre-Collision Throttle Management
- + Siri[®] compatibility
- + Vision Assist featuring:
 - + Adaptive Driving Beam (ADB)
 - + Blind Spot Monitor (BSM)
 - + Front View Monitor (FVM)
 - + Lane Change Assist (LCA)
 - + Rear Cross Traffic Alert (RCTA)
 - + Side View Monitor (SVM)

Pack more in.

Explore the range at www.subaru.com.au/outback

1. Some parts of the seating or trim are not full natural leather. 2. Bluetooth[®] is a registered trademark of Bluetooth SIG Inc. System operation ability is subject to Bluetooth[®] wireless technology specification of individual device.

3. Compatible Apple or Android device required.



AUSTRALIA'S BEST CARS

2015, 2016 & 2018 AWD SUV < \$50,000



Outback 2.5i Premium



Outback 3.6R

do more luxury

The new Subaru Outback 3.6R brings more grunt, more luxury and 11 harman kardon®¹ speakers. Six-cylinder power means you can tow more toys, too.

Outback 3.6R features

Performance

- + 3.6-litre horizontally-opposed Boxer petrol engine
- + Lineartronic™ CVT with manual mode
- + Maximum power output: 191kW@6000rpm
- + Maximum torque: 350Nm@4400rpm
- + SI-Drive – 3 modes

Interior

- + Air-conditioning – dual zone climate control with rear vents
- + Auto-dimming rear view mirror
- + Heated front seats
- + One touch lane change indicator
- + 60/40 split folding rear seats
- + Electric lumbar support – driver
- + USB charge port – rear passengers (x2)
- + Leather² seat trim – choice of black or ivory
- + 8-way power seats – driver and front passenger (driver with dual memory)
- + Smart key with push-start ignition

Exterior

- + 18" alloy wheels with full size spare
- + Chrome type side skirt garnish
- + Electric sunroof
- + Front fog lights and LED daytime running lights
- + Door mirrors with indicators – heated and power-folding
- + Powered rear gate
- + Rain-sensing front windscreen wipers
- + Rear door, rear quarter and rear windscreen privacy glass
- + Rear spoiler
- + Wheel arch mouldings
- + Front and rear mud guards
- + Silver roof rails with integrated cross bars
- + Self-levelling LED headlights with auto off (dusk-sensing)

Entertainment/Technology

- + Multi-Information Display unit (MID)
- + Integrated infotainment system with 8" LCD touchscreen
- + Satellite navigation
- + *Bluetooth*^{®3} wireless technology

- + 11 harman kardon®¹ speakers with subwoofer and amplifier
- + Rear view reverse camera
- + Auto door lock/unlock
- + Apple CarPlay™ and Android Auto™ connectivity⁴
- + Auxiliary jack and USB connections (x2)
- + EyeSight® Driver Assist system featuring:
 - + Adaptive Cruise Control
 - + Brake Light Recognition
 - + Lane Departure Warning
 - + Lane Keep Assist
 - + Lane Sway Warning
 - + Lead Vehicle Start Alert
 - + Pre-Collision Brake Assist
 - + Pre-Collision Braking System
 - + Pre-Collision Steering Assist
 - + Pre-Collision Throttle Management
- + Siri® compatibility
- + Vision Assist featuring:
 - + Adaptive Driving Beam (ADB)
 - + Blind Spot Monitor (BSM)
 - + Front View Monitor (FVM)
 - + Lane Change Assist (LCA)
 - + Rear Cross Traffic Alert (RCTA)
 - + Side View Monitor (SVM)

1. harman kardon® is a registered trademark of HARMAN International Industries, Incorporated. 2. Some parts of the seating or trim are not full natural leather. 3. *Bluetooth*® is a registered trademark of Bluetooth SIG Inc. System operation ability is subject to *Bluetooth*® wireless technology specification of individual device. 4. Compatible Apple or Android device required.

do all of Australia

The Subaru Outback 2.0D and 2.0D Premium diesel variants are built to do more. Increased fuel efficiency means more adventures and less servos. Subaru's superb Lineartronic™ CVT with manual mode, matched with a turbocharged engine, means more fun.

The Outback 2.0D Premium includes even more tech, with satellite navigation and Siri® compatibility, as well as Subaru's Vision Assist technology with Blind Spot Monitor, Lane Change Assist and more. EyeSight® Driver Assist technology also now comes standard on both diesel models.

Outback 2.0D features

Performance

- + 2.0-litre turbocharged horizontally-opposed Boxer diesel engine
- + Lineartronic™ CVT with manual mode
- + Maximum power output: 110kW@3600rpm
- + Maximum torque: 350Nm@1600-2800rpm

Interior

- + Air-conditioning – dual zone climate control with rear vents
- + Manual seat height lifter – driver
- + One touch lane change indicator
- + Cloth seat trim – black
- + 60/40 split folding rear seats
- + USB charge ports – rear passengers (x2)

Exterior

- + 17" alloy wheels with full size spare
- + Door mirrors with indicators – power-folding
- + Halogen headlights with auto off (dusk-sensing)

- + Front fog lights and LED daytime running lights
- + Rain-sensing front windscreen wipers
- + Rear door, rear quarter and rear windscreen privacy glass
- + Rear spoiler
- + Black roof rails with integrated cross bars

Entertainment/Technology

- + Multi-Information Display unit (MID)
- + Integrated infotainment system with 6.5" LCD touchscreen
- + Bluetooth®¹ wireless technology
- + Rear view reverse camera
- + EyeSight® Driver Assist system
- + Auxiliary jack and USB connection
- + Auto door lock/unlock
- + Apple CarPlay™ and Android Auto™ connectivity²

Outback 2.0D Premium extras

Additional features

- + 18" alloy wheels with full size spare
- + Electric sunroof
- + Siri® compatibility
- + Powered rear gate
- + Self-levelling LED headlights with auto off (dusk-sensing)
- + Door mirrors with indicators – heated and power-folding
- + Auto-dimming rear view mirror
- + Leather³ seat trim – choice of black or ivory
- + 8-way power seats – driver and front passenger (driver with dual memory)
- + Heated front seats
- + Smart key with push-start ignition
- + Satellite navigation
- + Vision Assist featuring:
 - + Adaptive Driving Beam (ADB)
 - + Blind Spot Monitor (BSM)
 - + Front View Monitor (FVM)
 - + Lane Change Assist (LCA)
 - + Rear Cross Traffic Alert (RCTA)
 - + Side View Monitor (SVM)



Outback 2.0D

immerse yourself

It's never been easier to enjoy more of the good stuff with our smart infotainment system. Featuring a big, bright design, the integrated LCD display lets you make handsfree calls and play your favourite tracks via its voice and touchscreen functionalities. There's also a rear view reverse camera for added safety. Satellite navigation is also available on selected variants.



Infotainment system
Outback 2.5i Premium,
3.6R and 2.0D Premium



USB connectivity
Outback 2.5i Premium,
3.6R and 2.0D Premium



harman kardon^{®1} speakers
Outback 3.6R



Push-start ignition
Outback 2.5i Premium,
3.6R and 2.0D Premium

1. harman kardon[®] is a registered trademark of HARMAN International Industries, Incorporated.





be inspired

Interior

On the inside choose from black or ivory cloth on selected variants. Sumptuous leather¹ is available on premium variants and in a choice of ivory or black.



Leather
Black



Leather
Ivory



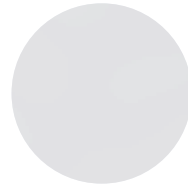
Cloth
Black



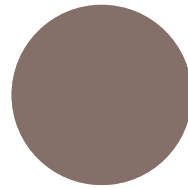
Cloth
Ivory

Exterior

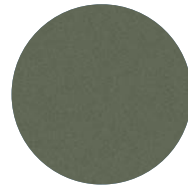
The colour you choose for your Subaru makes a bold statement about who you are. So we've made sure you've got lots of ways to express yourself – with a wide range of colours to make your Subaru more... you.



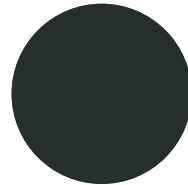
Crystal White
Pearl



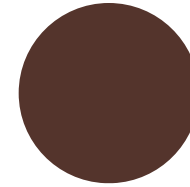
Tungsten
Metallic



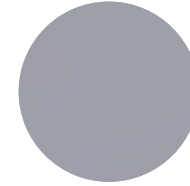
Wilderness Green
Metallic



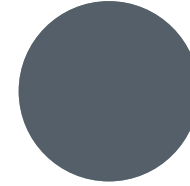
Dark Grey
Metallic



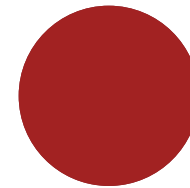
Oak Brown
Pearl



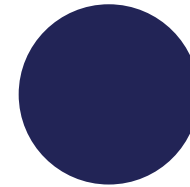
Ice Silver
Metallic



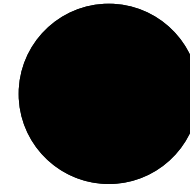
Platinum Grey
Metallic



Crimson Red
Pearl



Dark Blue
Pearl



Crystal Black
Silica

1. Some parts of the seating or trim are not full natural leather.

Note: Paint colours are representative only and subject to variation due to the printing process.

why Outback?

Symmetrical force of power

Our All-Wheel Drive philosophy

Greater balance and control. That's the confidence you get from our unique Symmetrical All-Wheel Drive System, which delivers the drive distribution to all four wheels, all the time. Every Subaru Outback has an innate sense of balance from the ground up, thanks to a near perfect symmetrical layout.

Boxing clever

Our famous Subaru Boxer engine

While most engines stand vertically, ours lay flat. The famous Subaru Boxer engine delivers handling like no other engine can. Sitting horizontally in the engine bay, it moves like a boxer's fists with a punch and counterpunch action. Lightweight, low and flat, it makes for perfect balance and a much lower centre of gravity. It creates less noise and vibration too. All of this means better on-road handling for you. More stability. More performance. More fun. And a more confident drive.

DataDotDNA®

Every Subaru is fitted with advanced engine immobilisers and the DataDotDNA®¹ Theft Deterrent System. Microscopic dots are laser-etched with each vehicle's unique Vehicle Identification Number – making it a less attractive target for thieves.

Three Year Rebate on Theft Insurance Excess

DataDot Technology (Australia) Pty Ltd will pay your theft insurance excess² (up to a maximum of \$800 including GST) should your new Subaru be stolen in the first three years of purchase and not recovered within 45 days despite the presence of DataDotDNA®¹ and warning labels.

Finest safety

5 star ANCAP safety across the range

With spirit, quality and imagination comes some serious safety innovation. We want every Subaru to be amongst the safest cars on the road. Engineered full of cutting-edge technologies and the most intelligent design features. It's not a Subaru unless it carries the maximum 5 star ANCAP³ safety rating.

Eyes in the back of your head

Rear view reverse camera

Manoeuvring back into a tight side street? Family driveway littered with toys? Reverse with confidence, thanks to our rear view reverse camera technology. The rear view reverse camera is like having eyes in the back of your head. This greatly improves your visibility and reduces the risk of bumps and scrapes. A rear view reverse camera is standard on every Outback variant.

Efficiency without compromise

Auto Stop Start

We're constantly thinking of ways to help the environment and become more fuel-efficient. That's why we developed Auto Stop Start technology. It saves fuel by immediately cutting the engine when you don't need it, like when you're idling or stopped in heavy traffic. The moment you're ready to move again, the engine restarts in a fraction of a second. Our Auto Stop Start technology is standard on Outback 2.5i and 2.5i Premium variants.

1. DataDotDNA® is a theft deterrent not a theft prevention mechanism. 2. Vehicles must be registered, comprehensively insured and less than 3 years old. DTA must receive a claim within 45 days of the theft. Terms and conditions apply. 3. The Australasian New Car Assessment Program (ANCAP) gives consumers consistent information on the level of occupant protection provided by vehicles in serious front and side crashes.

Excellent fuel efficiency

Subaru makes for better adventures and a healthier planet

With every year that passes, we can do more and more for the environment. Our 2.0-litre turbocharged Boxer diesel engine offers frugal fuel consumption, without sacrificing performance. It's perfect for taking the road less travelled. This engine gives you more range than ever. Subaru diesel – available in Outback 2.0D and 2.0D Premium variants.

Yet another world first

Lineartronic™ CVT

Pushing innovation beyond the bounds, we introduced an automatic transmission called Lineartronic™ CVT (Continuously Variable Transmission). And it's the reason our automatic models drive so smooth. It's the world's first longitudinally mounted system for AWD vehicles. Unlike a conventional automatic transmission – which uses fixed

gear ratios – our Lineartronic™ CVT provides infinite variability between the highest and lowest available ratios. So you now experience a smoothness that also optimises the efficiency of the vehicle. For even more excitement, switch to manual mode for greater control to suit your driving style. Lineartronic™ CVT is standard on all Outback variants.

Intelligently driven

Subaru Intelligent Drive

Heading to the shops? Taking on the Great Ocean Road? Each situation deserves a distinctive driving mode, so we crafted Subaru Intelligent Drive (SI-Drive) technology, available on Outback petrol variants, to do just that. Switch from smart, to sporty to even sportier. Intelligent (I) mode – perfect for everyday driving, Sport (S) mode – for enhanced acceleration and all-round sporty performance and on the Outback 3.6R, Sport Sharp (S#) mode – for a truly thrilling drive.

Get smart

X-Mode

When the going gets tough, engage Outback's intelligent X-Mode, standard on all Outback variants, featuring hill descent control and improved grip and traction in low speed and slippery conditions. It delivers uncompromising performance in challenging terrain.

We're looking out for you

EyeSight® Driver Assist

We were the first car company to exclusively use stereo camera technology to detect objects in our vehicles path. A sign of our future-thinking and our commitment to quality, technology and safety, EyeSight® Driver Assist is like your second pair of eyes, spotting potentially dangerous situations. If EyeSight® detects anything that might be of danger, it warns you audibly, urging you to take action and brake. EyeSight® is standard across the Outback range.

do™

do





do

Outback 3.6R

Outback specifications¹

ENGINE TYPE		NATURALLY ASPIRATED			TURBOCHARGED DIESEL	
Model		2.5i	2.5i Premium	3.6R	2.0D	2.0D Premium
		Wagon	Wagon	Wagon	Wagon	Wagon
Transmission						
Lineartronic™ CVT with manual mode		•	•	•	•	•
Engine						
Engine type		Horizontally-opposed Boxer 4-cylinder, petrol engine		Horizontally-opposed Boxer 6-cylinder, petrol engine	Turbocharged horizontally-opposed Boxer 4-cylinder, diesel engine	
Valve mechanism		DOHC 16-valve		DOHC 24-valve	DOHC 16-valve	
Bore x stroke		mm 94.0 x 90.0		92.0 x 91.0	86.0 x 86.0	
Capacity		cc 2498		3630	1998	
Compression ratio		10.3:1		10.5:1	15.2:1	
Fuel tank capacity		litres 60		60		
Fuel system		Multi point sequential injection			Common rail direct injection	
Fuel requirement (min)		RON 91		Diesel		
Performance²						
Maximum power output (DIN)		kW/rpm 129kW@5800rpm		191kW@6000rpm	110kW@3600rpm	
Maximum torque (DIN)		Nm/rpm 235Nm@4000rpm		350Nm@4400rpm	350Nm@1600-2800rpm	
Acceleration 0 - 100 km/h		seconds 10.2		7.6	9.9	
Electronic Throttle Control system (ETC)		Drive-by-wire				
Fuel consumption (ADR 81/02) For comparison purposes only. Real world results may vary ³ :						
combined		l/100km 7.3		9.9	6.3	
urban		l/100km 9.1		14.2	7.7	
extra urban		l/100km 6.2		7.5	5.5	
CO ₂ emissions (ADR81/02)		combined (g/km) 166		230	165	

1. Subaru Australia reserves the right to change mechanical specification and equipment levels without notice. 2. All performance data measured using 95RON as required by Australian Design Rule 81/02. Vehicles tested in accordance with ADR 81/02. Acceleration test performed under controlled conditions. 3. Fuel consumption figures quoted are measured in accordance with Australian Design Rule 81/02 and are for comparison purposes only. Real world results may vary based on individual driving circumstances e.g. traffic conditions, driving style, vehicle conditions, fuel quality, climatic conditions etc.

Outback specifications¹

ENGINE TYPE		NATURALLY ASPIRATED			TURBOCHARGED DIESEL	
Model		2.5i	2.5i Premium	3.6R	2.0D	2.0D Premium
Symmetrical All-Wheel Drive						
Type	Auto	Active Torque Split				
Transmission						
Gear ratio	1st	3.600		3.105	3.505	
	2nd	2.080		1.983	2.285	
	3rd	1.596		1.454	1.567	
	4th	1.221		1.057	1.179	
	5th	0.939		0.779	0.910	
	6th	0.717		0.542	0.723	
	7th	0.512		N/A	0.582	
Gear ratio - reverse		3.687		3.021	3.410	
Final reduction gear ratio		4.111				
Steering						
Type		Electric power-assisted rack-and-pinion				
Minimum turning circle	m	11.0				
Suspension						
Type	Front	MacPherson struts, lower L-arms, coil springs, stabiliser bar				
	Rear	Double wishbone, coil springs, stabiliser bar				
Brakes						
Type	Front	Ventilated disc brake				
	Rear	Ventilated disc brake				
Brake booster type		Tandem				
ABS		4-channel, 4-sensor ABS with Electronic Brakeforce Distribution				

1. Subaru Australia reserves the right to change mechanical specification and equipment levels without notice.

Outback specifications¹

ENGINE TYPE		NATURALLY ASPIRATED			TURBOCHARGED DIESEL	
Model		2.5i	2.5i Premium	3.6R	2.0D	2.0D Premium
Wheels and Tyres						
Tyre manufacturer		Bridgestone			Yokohama	Bridgestone
Tyres (width, profile, size, load index and speed rating)		225/60 R18 100V			225/65 R17 102H	225/60 R18 100V
Rim size		18x7J			17x7J	18x7J
Wheels		18"			17"	18"
Spare wheel		18"			17"	18"
Measurement						
Overall length	mm	4820				
Overall width	mm	1840				
Overall height	mm	1675				
Wheel base	mm	2745				
Front track	mm	1570				
Rear track	mm	1585				
Minimum ground clearance ²	mm	213				
Cargo volume – rear seat up/down	litres	512/1801				
Seating capacity		5				
Kerb weight ³	kg	1608	1639	1713	1696	1735
Tare mass ³	kg	1568	1599	1673	1656	1695
Towing						
With trailer brakes	kg	1500		1800	1700	
Without trailer brakes	kg	750				
Maximum tow ball down load	kg	150		180	170	

1. Subaru Australia reserves the right to change mechanical specification and equipment levels without notice. 2. Ground clearance at kerb weight. 3. Vehicle kerb weight and tare mass varies according to the types of optional equipment included.

Outback features¹

ENGINE TYPE	NATURALLY ASPIRATED			TURBOCHARGED DIESEL	
	2.5i	2.5i Premium	3.6R	2.0D	2.0D Premium
Model					
Transmission					
Lineartronic™ CVT with manual mode	•	•	•	•	•
Safety Rating					
5 star ANCAP ² safety rating (maximum 5)	•	•	•	•	•
Collision Avoidance					
Symmetrical All-Wheel Drive (SAWD)	•	•	•	•	•
Vehicle Dynamics Control system (VDC) featuring:	•	•	•	•	•
Electronic Stability Control (ESC)	•	•	•	•	•
Anti-lock Braking System (ABS)	•	•	•	•	•
Electronic Brakeforce Distribution (EBD)	•	•	•	•	•
Brake Assist	•	•	•	•	•
Traction Control System (TCS)	•	•	•	•	•
Active Torque Vectoring System	•	•	•	•	•
4-wheel disc brakes	•	•	•	•	•
Hill Hold Assist	•	•	•	•	•
Electronic parking brake	•	•	•	•	•
Rear view reverse camera	•	•	•	•	•
Vision Assist featuring:		•	•		•
Adaptive Driving Beam (ADB)		•	•		•
Blind Spot Monitor (BSM)		•	•		•
Front View Monitor (FVM)		•	•		•
Lane Change Assist (LCA)		•	•		•
Rear Cross Traffic Alert (RCTA)		•	•		•
Side View Monitor (SVM)		•	•		•
Collision Protection					
SRS ³ airbags - dual front, dual front side and curtain	•	•	•	•	•
SRS ³ airbags - knee airbag (driver)	•	•	•	•	•
Front seat belts with pretensioners and load limiters	•	•	•	•	•
3 point A/ELR rear seat belts	•	•	•	•	•
Height adjustable seat belt anchors – driver and front passenger	•	•	•	•	•

1. Subaru Australia reserves the right to change mechanical specification and equipment levels without notice. 2. The Australasian New Car Assessment Program (ANCAP) gives consumers consistent information on the level of occupant protection provided by vehicles in serious front and side crashes. 3. SRS: Supplemental Restraint System. Effective when used in conjunction with seat belts.

Outback features¹

ENGINE TYPE	NATURALLY ASPIRATED			TURBOCHARGED DIESEL	
	2.5i	2.5i Premium	3.6R	2.0D	2.0D Premium
Model					
Seat belt warning lights – all seats	•	•	•	•	•
Rear seat headrests for 3 seating positions	•	•	•	•	•
Height and angle adjustable front seat headrests	•	•	•	•	•
Height adjustable rear seat headrests	•	•	•	•	•
Ring-shaped passenger safety cell	•	•	•	•	•
Child Safety					
Child seat anchor points (x3)	•	•	•	•	•
ISOFIX anchor points (x2)	•	•	•	•	•
Rear door child locks	•	•	•	•	•
Intelligent Driving Dynamics					
Auto Stop Start	•	•			
Subaru Intelligent Drive (SI-Drive)	2 modes	2 modes	3 modes		
EyeSight® Driver Assist system featuring:	•	•	•	•	•
Adaptive Cruise Control	•	•	•	•	•
Brake Light Recognition	•	•	•	•	•
Lane Departure Warning	•	•	•	•	•
Lane Keep Assist	•	•	•	•	•
Lane Sway Warning	•	•	•	•	•
Lead Vehicle Start Alert	•	•	•	•	•
Pre-Collision Braking System	•	•	•	•	•
Pre-Collision Brake Assist	•	•	•	•	•
Pre-Collision Throttle Management	•	•	•	•	•
Pre-Collision Steering Assist	•	•	•	•	•
Electronic Throttle Control system (ETC)	•	•	•	•	•
X-Mode	•	•	•	•	•
Exterior					
Body coloured mirrors and door handles	•	•	•	•	•
Bonnet with gas struts	•	•	•	•	•
Chrome type window sills	•	•	•	•	•
Detachable module type windscreen wipers	•	•	•	•	•
Door mirrors with indicators	Power-folding	Heated and power-folding	Heated and power-folding	Power-folding	Heated and power-folding
Electric sunroof		•	•		•
Engine cover			•	•	•
Full size spare wheel	•	•	•	•	•
Rear door, rear quarter and rear windscreen privacy glass	•	•	•	•	•

1. Subaru Australia reserves the right to change mechanical specification and equipment levels without notice.

Outback features¹

ENGINE TYPE	NATURALLY ASPIRATED			TURBOCHARGED DIESEL	
	Model	2.5i	2.5i Premium	3.6R	2.0D
Rear spoiler	•	•	•	•	•
Dual tail pipes			•		
Exterior grade badge				•	•
Front and rear wipers with front de-icer	•	•	•	•	•
Rear window wiper	•	•	•	•	•
Wheel arch mouldings		•	•		•
Mud guards	Rear	Front and rear	Front and rear	Rear	Front and rear
Roof rails with integrated cross bars	Black rails	Black rails	Silver rails	Black rails	Black rails
Side cladding	•	•	With chrome	•	•
17" alloy wheels				•	
18" alloy wheels	•	•	•		•
Lighting - Exterior					
Daytime running lights – LED	•	•	•	•	•
Front fog lights	•	•	•	•	•
Headlights – halogen with auto off	•			•	
Headlights – dusk-sensing	•	•	•	•	•
Headlights – self-levelling LED with auto off		•	•		•
Rear bumper reflectors	•	•	•	•	•
Rear LED combination lights	•	•	•	•	•
Rear LED stoplight	•	•	•	•	•
Steering Responsive Headlights (SRH)		•	•		•
Welcome lighting	•	•	•	•	•
Lighting – Interior					
Blue interior door grip illumination - front	•	•	•	•	•
Puddle lamps – front	•	•	•	•	•
Cabin and cargo area lights	•	•	•	•	•
Illuminated ignition ring	•			•	
Map lights (x2)	•	•	•	•	•
Air-conditioning					
Air-conditioning – dual zone climate control with rear vents	•	•	•	•	•
Anti-dust filter	•	•	•	•	•
Front and side demisters	•	•	•	•	•
Floor heater ducts for rear passengers	•	•	•	•	•
Rear windscreen demister – electric	•	•	•	•	•

1. Subaru Australia reserves the right to change mechanical specification and equipment levels without notice.

Outback features¹

ENGINE TYPE	NATURALLY ASPIRATED			TURBOCHARGED DIESEL	
	2.5i	2.5i Premium	3.6R	2.0D	2.0D Premium
Model					
Security					
Immobiliser security system	•	•	•	•	•
DataDotDNA ^{®2} security system	•	•	•	•	•
Instrumentation and Controls					
Adjustable steering wheel – height and telescopic	•	•	•	•	•
Instrument cluster	•	•	•	•	•
One touch lane change indicator	•	•	•	•	•
Paddle gear shifters	•	•	•	•	•
Twin trip meter (switchable)	•	•	•	•	•
Customisable gauge colours	•	•	•	•	•
Hazard warning indicators	•	•	•	•	•
Manual mode	•	•	•	•	•
Steering wheel controls:	•	•	•	•	•
Audio	•	•	•	•	•
Bluetooth ^{®3}	•	•	•	•	•
EyeSight [®]	•	•	•	•	•
MID	•	•	•	•	•
SI-Drive	•	•	•	•	•
Multi-Function Displays					
Multi-Information Display unit (MID) featuring:	•	•	•	•	•
Audio display	•	•	•	•	•
Auto Stop Start information	•	•	•	•	•
Bluetooth ^{®3} phone display	•	•	•	•	•
5" LCD screen	•	•	•	•	•
Digital speedometer	•	•	•	•	•
Eco-gauge display	•	•	•	•	•
EyeSight [®] display	•	•	•	•	•
Fuel economy and journey information	•	•	•	•	•
Outside temperature and clock display	•	•	•	•	•
SI-Drive display	•	•	•	•	•
Warning display	•	•	•	•	•
X-Mode display	•	•	•	•	•

1. Subaru Australia reserves the right to change mechanical specification and equipment levels without notice. 2. DataDotDNA[®] is a theft deterrent not a theft prevention mechanism. 3. Bluetooth[®] is a registered trademark of Bluetooth SIG Inc. System operation ability is subject to the Bluetooth[®] wireless technology specification of individual device.

Outback features¹

ENGINE TYPE	NATURALLY ASPIRATED			TURBOCHARGED DIESEL	
Model	2.5i	2.5i Premium	3.6R	2.0D	2.0D Premium
Storage					
Cargo hooks	•	•	•	•	•
Centre console box	•	•	•	•	•
Cupholders – rear and centre console	•	•	•	•	•
Door pockets with integrated bottle holder – front and rear	•	•	•	•	•
In-dash console box	•	•	•	•	•
Overhead console – sunglass holder	•	•	•	•	•
Pull-out cargo area tie down points	•	•	•	•	•
Retractable cargo blind	•	•	•	•	•
Seat back pocket – driver and front passenger side	•	•	•	•	•
Convenience					
12V/120W power jacks (x2)	•	•	•	•	•
Auto-dimming rear view mirror		•	•		•
Auto door lock/unlock	•	•	•	•	•
Tailgate unlock on remote central locking keys	•	•	•	•	•
Illuminated sunvisors with vanity mirrors – driver and front passenger	•	•	•	•	•
Interior fuel lid lock release	•	•	•	•	•
Intermittent variable speed front windscreen wipers	•	•	•	•	•
Rain-sensing front windscreen wipers	•	•	•	•	•
Power steering, mirrors and windows	•	•	•	•	•
Powered rear gate		•	•		•
Rear seat centre armrest	•	Black with chrome	Black with chrome	•	Black with chrome
Remote central locking (keys x2)	•	•	•	•	•
Smart key and push-start ignition		•	•		•
USB charge port - rear passengers (x2)	•	•	•	•	•
Interior Trims					
Carpet trim – black	•	•	•	•	•
Gear shift surround – gloss black	•	•	•	•	•
Leather steering wheel and gear shift	•	•	•	•	•
Seat trim – black cloth				•	
Seat trim – black or ivory cloth	•				
Seat trim – black or ivory leather ²		•	•		•
Side sill plates (front) – stainless	•	•	•		•

1. Subaru Australia reserves the right to change mechanical specification and equipment levels without notice. 2. Some parts of the seating or trim are not full natural leather.

Outback features¹

ENGINE TYPE	NATURALLY ASPIRATED			TURBOCHARGED DIESEL	
	2.5i	2.5i Premium	3.6R	2.0D	2.0D Premium
Model					
Seating Extras					
60/40 split folding rear seats	•	•	•	•	•
8-way power seat with dual memory – driver		•	•		•
8-way power seat – front passenger		•	•		•
Electric lumbar support – driver		•	•		•
Manual seat height lifter – driver	•			•	
Heated seats – driver and front passenger		•	•		•
One touch lever folding and reclining rear seats	•	•	•	•	•
Entertainment					
Integrated infotainment system featuring:	•	•	•	•	•
AM/FM radio	•	•	•	•	•
Single CD player	•	•	•	•	•
6 speakers	•	•		•	•
Satellite navigation		•	•		•
6.5" LCD touchscreen	•			•	
8" LCD touchscreen		•	•		•
Siri® compatibility		•	•		•
Apple CarPlay™ and Android Auto™ connectivity ²	•	•	•	•	•
11 harman kardon® ³ speakers with subwoofer and amplifier			•		
<i>Bluetooth</i> ® ⁴ wireless technology with:	•	•	•	•	•
Handsfree mobile communication	•	•	•	•	•
Audio streaming ⁵	•	•	•	•	•
Voice command recognition	•	•	•	•	•
Auxiliary jack – front centre console	•	•	•	•	•
USB connections – front centre console	x1	x2	x2	x1	x2
Owner Benefits					
5 Year/Unlimited Km Warranty	•	•	•	•	•
5 Year/125,000 Km Capped Price Servicing Program ⁶	•	•	•	•	•
12 Month Roadside Assistance Program ⁷	•	•	•	•	•

1. Subaru Australia reserves the right to change mechanical specification and equipment levels without notice. 2. Compatible Apple or Android device required. 3. harman kardon® is a registered trademark of HARMAN International Industries, Incorporated. 4. *Bluetooth*® is a registered trademark of Bluetooth SIG Inc. System operation ability is subject to the *Bluetooth*® wireless technology specification of individual device. 5. There may be restrictions on features available for certain variants that are not fully compliant with AVCRP. 6. Every eligible Model Year 2018 onward Subaru Outback comes with Subaru's 5 Year/125,000 Km Capped Price Servicing Program. Available at participating Subaru retailers only and does not apply to rental and some other classes of vehicles. For full Capped Price Servicing Terms and Conditions visit www.subaru.com.au/service/pricing/capped-price-servicing. 7. 12 Month Roadside Assistance Program is standard upon activation with relevant Motoring Club in each state. To receive this benefit the customer must opt into the 12 Month Roadside Assistance Program at time of vehicle delivery. Eligible customers are those retail and novated lease customers who purchase a new Subaru on or after 1st June 2013 and have less than 5 vehicles under the Club Membership offer. Customers must provide a valid phone and residential address, as well as date of birth. Fleet, Government and Rental companies are excluded.

do™

do

do



Outback 2.0D Premium

accessorised for Australia

Australia's a nation of doers, so we've got the accessories to match.

Whether you're heading for a weekend away, off to the park for a kick or taking the dog for a beach run, we've got you covered.

- + Styling Tweak your Subaru Outback until it's uniquely yours with a front grille styling accessory.
- + Protection Keep your Outback safe from muddy paws, sandy feet and shifting loads with a range of carpet or rubber mat sets, our cargo tray, cargo barriers and our seat protector.
- + Cargo Extend your Outback's towing and carrying capabilities. There's a tow bar package as well as a wide range of quality Thule sport and cargo accessories, bike and kayak mounts.
- + Security,
Convenience
and Safety Keep your new wheels secure with a set of wheel lock nuts and make tight parks easy with front corner and rear parking sensors. New parents will love the 6-point-harness baby seat that integrates with the Subaru Outback's ISOFIX anchor points.

Genuine Subaru Accessories are available from your Subaru Retailer, so be sure to ask about the range when buying your new Subaru Outback.



To view our complete range of accessories and pricing online visit www.subaru.com.au/outback/accessories





Outback 2.5i Premium with Tow Bar fitted

do™

do

do

a

e

b

f

c

g

d

do™



packs that will inspire you

From action-packed to packing the back, these quality Genuine Subaru Accessory Packs will give you the protection you need and versatility you desire to do more with your Subaru Outback.

Both stylish and functional, each Accessory Pack has been custom made for a tailored fit to complement your Subaru Outback and keep it looking good for years to come.

Plus all Genuine Subaru Accessories are protected by our manufacturer's warranty¹.

Cladding Pack² includes:

Take on new adventures but fend off mud and scrapes with mud guards and wheel arches that are practical and stylish. Throw in all the weekend gear, knowing that both your cargo and vehicle are protected.

- a** Mud Guard Set (Front)
- b** Wheel Arch Moulding Set
- c** Cargo Tray
- d** Cargo Step Panel (Resin)
- e** Carpet Mat Set

Protection Pack includes:

Do your part in protecting your Outback from bumps, dirt and the weather. Designed for a perfect fit, these accessories are tough enough to handle day-to-day living – so you can do more.

- c** Cargo Tray
- d** Cargo Step Panel (Resin)
- e** Carpet Mat Set
- f** Weather Shields

Explorer Pack includes:

Add a functional and sturdy Tow Bar engineered specifically for the Australian market to the Protection Pack to squeeze more out of your everyday.

- c** Cargo Tray
- d** Cargo Step Panel (Resin)
- e** Carpet Mat Set
- f** Weather Shields
- g** Tow Bar

1. For full warranty terms and conditions, visit www.subaru.com.au/accessories-information/warranty

2. Cladding Pack only applicable to Outback 2.5i and 2.0D.



To view our complete range of accessories and pricing online visit www.subaru.com.au/outback/accessories

protect your investment

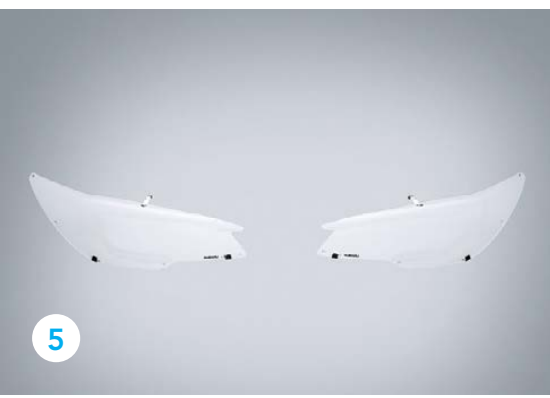
Get out and do more while protecting your Outback from the rough and tumble of daily life. From our cargo tray to our bumper protector, each accessory is tailored for a perfect fit.

ACCESSORY	PART NUMBER	2.5i	2.5i Premium	3.6R	2.0D	2.0D Premium
Styling						
1 Front Grille	J1010AL310		•	•		
2 Front Grille (with camera cover)	J1010AL310K	•				
Protection						
3 Carpet Mat Set	J5010AL000	•	•	•	•	•
4 Rubber Mat Set	J5010AL100	•	•	•	•	•
5 Headlamp Protectors	J101AAL010		•	•		•
6 Cargo Step Panel (Resin)	E771SAL001	•	•	•	•	•
7 Cargo Step Panel (Stainless)	E7710AL000	•	•	•	•	•
8 Weather Shields	F0010AL300	•	•	•	•	•
9 Mud Guards (Front)	J1010AL201	•	STD	STD	•	STD
10 Wheel Arch Moulding Set	E2010AL300	•	STD	STD	•	STD
11 Rear Seat Pet Protector	F4110SG000	•	•	•	•	•
12 Body Side Moulding	J1010AL650##	•	•	•	•	•
13 Body Side Moulding (Non-painted)	J1010AL650NN	•	•	•	•	•
14 Outback Protection Film	SAT2018	•	•	•	•	•
15 Bootlip and Bumper Protector	SAT6003	•	•	•	•	•

Denotes colour option of your choice.

 To view our complete range of accessories and pricing online visit www.subaru.com.au/outback/accessories

	Not Applicable
STD	Part of Vehicle Specifications
•	Applicable





do all the things you've planned

Tow it, stow it or just pack more into your every day with a wide range of Outback compatible cargo options, plus premium Thule sport and cargo carrier accessories.

ACCESSORY	PART NUMBER	2.5i	2.5i Premium	3.6R	2.0D	2.0D Premium
Cargo and Tow						
16 Cargo Barrier	F551AAL000	•	•	•	•	•
17 Cargo Barrier Forward Mount Bracket Kit	F551AAL500	•	•	•	•	•
18 Cargo Tray	J501AAL000	•	•	•	•	•
19 Cargo Room Net (Rear Tailgate)	F551SAL000	•	•	•	•	•
20 Cargo Room Net (Rear Seat Back)	F551SAL010	•	•	•	•	•
21 Tow Bar	L101AAL001	•	•	•	•	•
22 Cargo Socket Kit (12V)	H6710AL100	•	•	•	•	•
23 Lifestyle Awning Kit	SAT9021	•	•	•	•	•
Yakima Roof Attachments and Accessories						
24 Fork Mount Bike Carrier Upright	E361SAJ300	•	•	•	•	•
25 Front Wheel Holder ¹	E3610LS431	•	•	•	•	•
26 Kayak Carrier ²	E361SXA201	•	•	•	•	•
27 Crossbar Clamps Horizontal	E361SAJ801	•	•	•	•	•

1. Front Wheel Holder requires Crossbar Clamps Horizontal - Part Number E361SAJ801. Available separately.

2. Kayak Carrier requires Crossbar Clamps Horizontal – Part Number E361SA801. Available separately.



To view our complete range of accessories and pricing online visit www.subaru.com.au/outback/accessories

ACCESSORY		PART NUMBER	2.5i	2.5i Premium	3.6R	2.0D	2.0D Premium
Thule Roof Attachments and Accessories							
28	Thule Wheel Carrier	SAT8011	•	•	•	•	•
29	Thule Sidearm (Bike Carrier Upright)	SAT8012	•	•	•	•	•
30	Deluxe Ski Carrier – 4 Pair	SAT8023	•	•	•	•	•
31	Deluxe Ski Carrier – 6 Pair	SAT8024	•	•	•	•	•
32	Kayak Carrier – Dockglide	SAT9018	•	•	•	•	•
33	Thule Paddleboard & Mal Carrier	SAT8016	•	•	•	•	•
34	Thule Wave (Surf Carrier)	SAT8017	•	•	•	•	•
35	Luggage Pod Touring 100 (Titan Aeroskin) Textured Finish (Small)	SAT5008	•	•	•	•	•
36	Luggage Pod Touring 100 (Black Glossy) Smooth Finish (Small)	SAT5008B	•	•	•	•	•
37	Luggage Pod Motion XT M (Glossy Silver)	SAT9014	•	•	•	•	•
38	Luggage Pod Motion XT M (Glossy Black)	SAT9015	•	•	•	•	•
39	Luggage Pod Motion XT XL (Glossy Silver)	SAT9016	•	•	•	•	•
40	Luggage Pod Motion XT XL (Glossy Black)	SAT9017	•	•	•	•	•
41	Thule Go Box	SAT8005	•	•	•	•	•
42	Thule Go Pack Set (4 Bags)	SAT8006	•	•	•	•	•
43	Side Up Wheel Step	SAT9004	•	•	•	•	•

 To view our complete range of accessories and pricing online visit www.subaru.com.au/outback/accessories



44



45



46



47



48



49



50



51



52



53



54



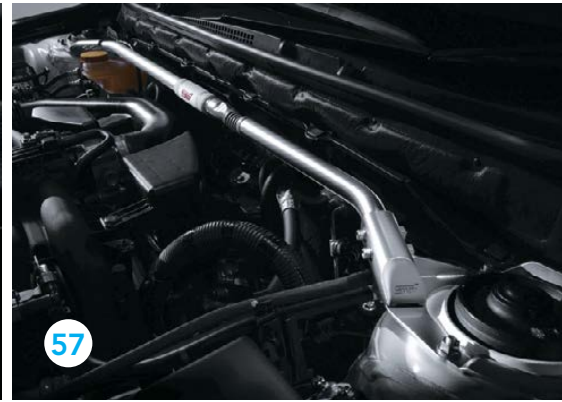
55



56



57



relax, we've thought of everything

From the simplest wheel lock nuts, to intelligent front corner and rear parking sensors, you can be sure we have you covered.

ACCESSORY	PART NUMBER	2.5i	2.5i Premium	3.6R	2.0D	2.0D Premium
Tow Bar Attachments (Tow Bar Required)						
44 Tow Bar Mounted Bike Carrier (Two Bikes)	SAP925	•	•	•	•	•
45 Tow Bar Mounted Bike Carrier (Three Bikes)	SAP927	•	•	•	•	•
Security						
46 Wheel Lock Nuts	B327EYA000	•	•	•	•	•
Convenience and Safety						
47 Reverse Sensors	H481AAL200##	•	•	•	•	•
48 Front Corner Parking Sensors	H481AAL500	•	•	•	•	•
49 Cigarette Lighter	H6710AL010	•	•	•	•	•
50 Round Type Ashtray (Black)	92172AG040	•	•	•	•	•
51 First Aid Kit	PR7670	•	•	•	•	•
52 Safety Triangle	SAT9007	•	•	•	•	•
53 Baby Seat – Kompressor Beyond Midnight	SAC7004	•	•	•	•	•
54 Garmin Dash Cam	0100175011	•	•	•	•	•
55 Magnetic Mount (Additional)	0101253000	•	•	•	•	•
STI Performance Parts						
56 STI Shift Knob CVT	C1010AL000	•	•	•	•	•
57 STI Flexible Tower Bar	E4010AL000	•	•	•	•	•

Denotes colour option of your choice.



To view our complete range of accessories and pricing online visit www.subaru.com.au/outback/accessories

welcome to the family

There are cars that simply get you from A to B, and then there are cars that empower you. Buying a Subaru is like embracing life with both hands and knowing that nothing is going to stop you. When you buy a new Subaru you



are welcomed into an owner's program that gives you access to a number of benefits.

Subaru New Car Warranty – 5 Year/Unlimited Kilometres

Every new Subaru purchased on or after 1st January 2019 is covered by a 5 Year/Unlimited Kilometre manufacturer's national warranty. Visit subaru.com.au/warranty or ask your Subaru Retailer for more information.

Subaru Capped Price Servicing

With our Subaru 5 Year/125,000 Kilometre Capped Price Servicing Program¹, you'll now know the maximum amount you will have to pay for your next scheduled service during the Program period.

You'll also have peace of mind knowing that specialist Subaru technicians will be looking after your pride and joy using only Genuine Subaru Parts.



DataDotDNA®

Every Subaru is fitted with advanced engine immobilisers and the DataDotDNA^{®2} Theft Deterrent System. Microscopic dots are laser-etched with each vehicle's unique Vehicle Identification Number – making it a less attractive target for thieves.

Three Year Rebate on Theft Insurance Excess

DataDot Technology (Australia) Pty Ltd will pay your theft insurance excess³ (up to a maximum of \$800 including GST) should your new Subaru be stolen in the first three years of purchase and not recovered within 45 days despite the presence of DataDotDNA[®] and warning labels.

1-Month Health Check and Chat

The 1-Month Health Check and Chat is a free consultation within the first month after delivery of your new Subaru. It allows our Subaru-trained technicians to provide quick vehicle checks, and one of our Service Advisors will answer any of your questions to help ensure an ongoing, worry-free experience.

Subaru's Map Updates

If your new Subaru is fitted with a factory line fit navigation unit, your unit will be covered by Subaru's Map Update Program⁴ – guaranteeing you'll have access to the latest maps for the first 3 years of ownership.

1. Every eligible Model Year 2018 onward Subaru Outback comes with Subaru's 5 Year/125,000 Km Capped Price Servicing Program. Available at participating Subaru Retailers only and does not apply to rental and some other classes of vehicles. For full Capped Price Servicing Terms and Conditions visit www.subaru.com.au/service/pricing/capped-price-servicing. 2. DataDotDNA[®] is a theft deterrent not a theft prevention mechanism. 3. Vehicles must be registered, comprehensively insured and less than 3 years old. DTA must receive a claim within 45 days of the theft. Terms and conditions apply. 4. Subaru's Map Update Program is available on 2018 Subaru Outback models purchased from 7th February 2018 onwards with the factory line fit Gen3 navigation unit. Subaru's Map Update Program is not available on accessory fit or dealer sourced navigation units. Subaru Australia reserves the right to add and remove eligible vehicles at its discretion. For full terms and conditions of the Subaru Map Update Program visit www.subaru.com.au/owner-experience/benefits/subaru-map-update-program. 3 Year Map Update Guarantee subject to the vehicle having its scheduled services performed at an authorised Subaru Service Centre during the program period.

live life without limits

My Subaru – online owner’s destination

The My Subaru owner’s portal is an online destination for owners which provides access to exclusive benefits, tailored content, your vehicle’s ownership history and much more. Login to My Subaru, the online destination for Subaru owners that will help you get more out of your vehicle, and more out of your life.

Visit my.subaru.com.au

Subaru Roadside Assistance

Enjoy 12 months of Australia-wide, standard Roadside Assistance when you purchase your new Subaru. In the unfortunate situation where you need that extra helping hand, our Roadside Assistance will help¹ with arranging a tow, battery service, flat tyre service, fuel delivery and lockout service.

Subaru Certified Collision Repairer Network

With a dedicated Subaru Certified Collision Repairer² helpline available on 1800 737 179, help is available when you need it most. Available 24-hours a day, 7 days a week, help is only a phone call away. Subaru Certified Collision Repairers guarantee that trained specialists will repair your Subaru to strict factory specifications using Genuine Subaru Parts.

Genuine Accessories

Genuine Subaru Accessories are designed to enhance your vehicle, are factory approved by Subaru and are protected by the Genuine Subaru Accessories Warranty. For our full range of Subaru Outback accessories visit subaru.com.au/outback/accessories. For warranty information visit subaru.com.au/warranty and click on “Genuine Subaru Accessories Warranty”.

Subaru Finance

Subaru Finance³ provides a range of competitive financial solutions to approved customers. Our finance specialists will help you find a finance package to meet your needs conveniently.

Subaru Insurance

It’s important to enjoy the freedom of owning a Subaru, but it’s also important to protect it. A range of Subaru Insurance⁴ options provides a variety of choices, including: Subaru Comprehensive Motor Vehicle Insurance, Subaru Value Protect Insurance and Subaru Loan Protection Insurance.

1. 12 month Club Membership and Roadside Assistance Offer is standard upon activation with the relevant Motoring Club in each state. To receive this benefit the customer must opt into the 12 month Club Membership and Roadside Assistance Offer at time of vehicle delivery. Eligible customers are those retail and novated lease customers who purchase a new Subaru and have less than 5 vehicles under the Club Membership offer. Customers must provide a valid phone number and residential address, as well as date of birth. Fleet, Government and Rental companies are excluded. Terms and conditions apply. For a full list of benefits, visit www.subaru.com.au/owner-experience/benefits/program/roadside. 2. Subaru Certified Collision Repairer network not available in all areas. Call 1800 737 179 or visit www.subaru.com.au/retailers to find your closest Subaru Certified Collision Repairer. 3. Finance provided by Macquarie Leasing Pty Limited ABN 38 002 674 982 Australian Credit Licence Number 394925 trading as Subaru Finance. All applications for credit are subject to Macquarie’s normal credit approval criteria. Terms and conditions, fees and charges apply. 4. Subaru Insurance products are issued by Allianz Australia Insurance Limited AFS Licence No. 234 708 ABN 15 000 122 850 (Allianz). In arranging this insurance Subaru (Aust) Pty Limited ABN 95 000 312 792 (Subaru) and the authorised dealers act as agents of Allianz and not as your agent. Neither Subaru nor any of its related companies or appointed authorised retailers have any liability in respect of these policies.

do



do™



do

Outback 3.6R

Outback Awards

- 2018 - Australia's Best Cars, Best All-Wheel Drive Sports Utility Wagon under \$50,000, Outback 2.5i Premium
- 2016 - Australia's Best Cars, Best All-Wheel Drive Sports Utility Wagon under \$50,000, Outback 2.5i Premium
- 2015 - Australia's Best Cars, Best All-Wheel Drive Sports Utility Wagon under \$50,000, Outback 2.5i Premium
 - Australasian New Car Assessment Program 5 star ANCAP safety rating
- 2009 - Australia's Best Cars, Best Recreational 4WD, Subaru Outback 2.5i
 - Fairfax Drive Car of the Year 2009, Best SUV under \$40,000, Subaru Outback
 - Australasian New Car Assessment Program 5 star ANCAP safety rating for the entire Outback range

Subaru Australia reserves the right to vary vehicle specifications and standard features in Australia from those detailed in this brochure. Vehicles shown in this brochure may be fitted with accessories available at additional cost. No part of the brochure can be reproduced without written permission from Subaru Australia. Printed in Australia.

subaru.com.au



SUBARU

© Copyright 2018 – Subaru (Aust) Pty Limited. All rights reserved.
Subaru (Aust) Pty Limited ABN 95 000 312 792 (Subaru Australia) PO Box 8311, Baulkham Hills NSW 2153 Toll Free: 1800 226 643