



ALL-NEW SUBARU
OUTBACK
ALL-WHEEL DRIVE

Overseas model shown

Final Australian specifications of Subaru Outback subject to confirmation and may vary from what is described in this brochure and between model variants. © 2021 Subaru (Aust) Pty Limited. All rights reserved.



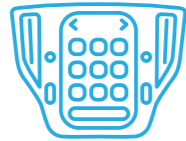
SUBARU

a new generation of adventure



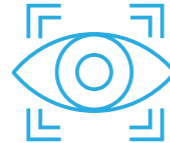
After 25 years of continuous innovation, a new generation of adventure begins with the launch of the most technologically advanced, and luxurious Subaru Outback ever.

Next level sophistication



Feast your eyes on a spectacular 11.6" infotainment system including Apple CarPlay® and Android Auto™¹ and lightning fast tablet-like responsiveness. Plus, enjoy the comfort of dual zone air-conditioning and powered front seats, as well as Nappa leather accented seat trim on the Outback AWD Touring, for luxury like no other.

Advanced safety



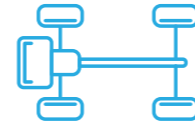
A new level of safety innovations helps protect you and your loved ones on any adventure. Featuring Next Generation EyeSight® Driver Assist technology with nearly twice the field of vision; a Driver Monitoring System to help monitor driver fatigue²; Vision Assist that takes visibility one step further; Reverse Automatic Braking (RAB); and many more updated innovations to aid the goal of Towards Zero accident deaths in a Subaru by 2030³.

Impressive performance



Feel the power of a newly refined 2.5L Subaru Boxer engine featuring unrivalled flexibility and an impressive 2000kg braked towing capacity⁴ thanks to an upgraded driveline and the newly adopted Subaru Global Platform (SGP).

Unbelievable fun



The fun starts now with the introduction of the Subaru Global Platform (SGP) underpinning the all-new Outback. And when combined with Subaru's world renowned Symmetrical All-Wheel Drive and the most advanced X-Mode yet, you'll look forward to every single time you get behind the wheel.

Intelligent versatility



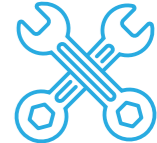
Be prepared for anything with unmatched versatility. Featuring an entirely hands-free powered tailgate on selected variants, new integrated storage solutions for passengers, clever interior comforts, split folding seats, integrated roof rails, as well as a larger cargo area which makes stowing those important items as convenient as possible.

Rugged design



Get set for adventure in the most ruggedly stylish Outback yet. Next generation features include reimagined styling and dynamically integrated headlights. With tough exterior wheel arches and 18" alloy wheels, it's loaded with attitude.

Lower cost of ownership



With the newly revised and extended service intervals of every 12 months/12,500 kilometres (whichever occurs first), the all-new Subaru Outback is making it even easier and even more affordable for every Australian to own their new Subaru.

1. Compatible Apple® or Android™ device required. 2. Driver Monitoring System performance and capability dependent on environmental and technical conditions. Refer to Owner's Manual for full details. 3. Subaru Corporation (the Japanese manufacturer of Subaru cars) has publicly stated its aim to reduce the number of fatal accidents in a Subaru vehicle to zero by 2030 as well as the number of fatalities among pedestrians, cyclists and the like as a result of a collision with a Subaru vehicle. For more information on Subaru Corporation's CSR initiatives visit <https://www.subaru.co.jp/en/csr/safevehicles.html>. 4. Towing capacity is subject to regulatory requirements, tow bar and vehicle design and towing equipment limitations. Requires fitment of optional tow bar accessory. Ask your Retailer for details of Genuine Subaru tow bar capacity and availability details. Always refer to your Owner's Manual for towing instructions.

Subaru Outback AWD

Not all SUVs are created equal. Some may look the part, but deep down they're just not up to the task. But the Subaru Outback AWD is the real thing – a true mud in its blood All-Wheel Drive SUV. Built with Subaru's renowned Global Platform for increased rigidity and improved road handling, it's at home on the corners and on the gravel. And on the inside, you can wrap yourself in luxury with smart air-conditioning featuring humidity sensors and fuel saving tech, and a Driver Monitoring System (DMS)¹. Interior space has increased for cargo and passengers, while the adoption of thicker glass and improved Noise, Vibration and Harshness (NVH) levels makes for a more serene driving experience. And lastly, we've increased the service intervals to 12 months/12,500km (whichever occurs first) for reduced ownership costs.

So, grab the family and get ready for your next adventure and make the most of all these incredible features and much more including:

- + 90% new 2.5L horizontally-opposed direct injection Boxer 4-cylinder, petrol engine
- + Lineartronic[®] CVT with manual mode
- + Symmetrical All-Wheel Drive (AWD)
- + X-Mode (2 mode)
- + 11.6" tablet-like infotainment screen
- + Subaru Intelligent Drive (SI-Drive)
- + Next Generation EyeSight[®] Driver Assist technology featuring new stereo cameras for improved range
- + Advanced Lane Centring Function featuring lead car follow functionality

- + Autonomous Emergency Steering
- + Lane Departure Warning featuring haptic feedback (vibrating) steering wheel
- + Speed Sign Recognition with Intelligent Speed Limiter functionality
- + Driver Monitoring System¹
- + Subaru's Vision Assist
- + SRS² passenger seat cushion airbag
- + 2000kg braked towing capacity³
- + Self-levelling LED headlights with auto off (dusk-sensing)
- + Integrated front LED turn signals and Daytime Running Lights (DRL)



Overseas model shown

Learn more at subaru.com.au

1. Driver Monitoring System performance and capability dependent on environmental and technical conditions. Refer to Owner's Manual for full details. 2. SRS: Supplemental Restraint System. Effective when used in conjunction with seatbelts. 3. Towing capacity is subject to regulatory requirements, tow bar and vehicle design and towing equipment limitations. Requires fitment of optional tow bar accessory. Ask your Retailer for details of Genuine Subaru tow bar capacity and availability details. Always refer to your Owner's Manual for towing instructions.



Overseas model shown

Subaru Outback AWD



Subaru Outback AWD Sport

Overseas model shown

Subaru Outback AWD Sport

Take it to the next level in the ruggedly stylish all-new Outback AWD Sport. Made for those who were born to explore and want a next generation SUV that reflects their active lifestyle.

Including all the features of the Outback AWD, plus:

- + Water repellent¹ sports seat trim
- + Satellite navigation
- + Exclusive to this variant, unique black exterior highlights for a more rugged look, including door mirror caps, front grille, front fog light surround, front and rear bumper guard, shark fin antenna and rear badging

- + 18" alloy wheels with dark metallic finish
- + Tough ladder-type roof rails
- + Additional Vision Assist features including a Front View Monitor and Side View Monitor to aid visibility in tricky situations
- + Heated seats for both front passengers and rear outboard passengers
- + Hands-free powered tailgate
- + Sports pedals



Overseas model shown

1. Water repellent trim repels water so that the material is not easily penetrated by small amounts of water. Trim is not 100% waterproof. Intermittent cleaning may be required to maintain water repellent characteristics.

Subaru Outback AWD Touring

The flagship of the Subaru range, the all-new Subaru Outback AWD Touring is Subaru's most technologically advanced and luxurious Outback ever made. This spectacular SUV is packed with features that build upon the Outback AWD and Outback AWD Sport, including:

- + Nappa leather accented seat trim
- + Electric sunroof
- + 9 Harman Kardon®¹ speakers, subwoofer and amplifier

- + Driver Monitoring System² including – auto door mirror adjustment and auto driver's seat adjustment
- + Single CD player
- + Heated steering wheel
- + Dual memory driver's seat
- + Door mirrors with auto-dipping (passenger side), auto power-folding and position memory functionality
- + Door mirror caps – satin finish

- + 18" gloss finish alloy wheels
- + Roof rails with integrated cross bars – silver



Overseas model shown

1. Harman Kardon® is a registered trademark of HARMAN International Industries, Incorporated. 2. Driver Monitoring System performance and capability dependent on environmental and technical conditions. Refer to Owner's Manual for full details.

Learn more at subaru.com.au



Overseas model shown

Subaru Outback AWD Touring

Outback tech, features and specs

Heart of the Outback can pull 2,000kg¹ (braked towing capacity)

Solid. Brave. Proven. Subaru's Boxer engine design lies at the heart of the Outback. With 90% new parts compared to the previous generation 2.5L Outback, it's more powerful and can tow a braked capacity of 2,000kg¹. And just to be sure you can go the distance, Subaru have also thrown in a large fuel tank, a full-size spare wheel and handy roof rails.

Take any road

With the sure-footed control of Symmetrical All-Wheel Drive (AWD) you'll have the confidence to tackle any road; dirt, gravel, wet or steep. Symmetrical AWD delivers engine power to all four wheels simultaneously which means under acceleration there's twice the grip capacity compared to conventional 2WD vehicles. Having the driving force spread across all four wheels means greater control and

confidence under all sorts of conditions. And when paired with Subaru's X-Mode and 213mm of ground clearance², you can tackle the beaten track as well.

Checking in on you

It helps to have someone check in on you; now your Outback can with Subaru's Driver Monitoring System (DMS)³. The DMS³ helps checks whether your eyes are on the road, indicates if you might be in need of a rest, and helps warn you when you need a break.

Spectacular infotainment system

Boasting an impressive 11.6" infotainment screen with smartphone-like responsiveness, full HD graphics and Apple CarPlay[®] and Android Auto[™] connectivity⁴, you'll enjoy a seamless in-car experience like never before.

Stay safe in your lane

EyeSight[®] Driver Assist technology includes Lane Centring Function and Lane Departure Warning with steering wheel vibration to minimise the chance of you unintentionally drifting out of your lane. Meanwhile, new EyeSight[®] stereo cameras with improved image recognition software means Subaru's second pair of eyes are even better at helping to watch the road while you are driving.

Avoiding the collision

Subaru's EyeSight[®] includes Pre-Collision Braking System with collision detection at intersections and Autonomous Emergency Steering, ensuring that the Outback goes further to help you avoid a collision. If a collision does unfortunately occur, Post-Collision Brake Control can work to minimise further impacts and keep you safe.

Watching your speed

The Subaru Outback can help keep your speed in check for you with Speed Sign Recognition, Intelligent Speed Limiter and Adaptive Cruise Control.

Keep connected

Stay connected and powered up with multiple USB charging ports in the interior and even a 12V power outlet in the boot.

For all life's spills

Spills happen, that's life. Luckily the sports seat trim is water repellent⁵. Available on the Outback AWD Sport.

Stylish front 'n back

Rugged shapes and black highlights work together in the new front and rear bumper cladding to create a tough yet stylish look from every angle.

Better visibility for all

See things clearly thanks to the Front View Monitor⁶ and Side View Monitor⁶. Meanwhile, the Blind Spot Monitor can warn you when a vehicle is in your blind spot, and Adaptive Driving Beam technology can intuitively light up the road without blinding other drivers.

Luxury interior

Soft touch Nappa leather accented seat trim⁷ as well as LED map, cabin and cargo lights combine for a luxury interior ambience. Available on Outback AWD Touring.

Smart heating

Heated front and rear outboard seats⁶, ensure the driver and passengers travel in comfort, even on the frostiest of winter mornings. Available on Outback AWD Sport and Outback AWD Touring.

1. Towing capacity is subject to regulatory requirements, tow bar and vehicle design and towing equipment limitations. Requires fitment of optional tow bar accessory. Ask your Retailer for details of Genuine Subaru tow bar capacity and availability details. Always refer to your Owner's Manual for towing instructions. 2. Ground clearance at kerb weight. 3. Driver Monitoring System performance and capability dependent on environmental and technical conditions. Refer to Owner's Manual for full details. 4. Compatible Apple[®] or Android[™] device required.

5. Water repellent trim repels water so that the material is not easily penetrated by small amounts of water. Trim is not 100% waterproof. Intermittent cleaning may be required to maintain water repellent characteristics. 6. Available on Outback AWD Sport and Outback AWD Touring only. 7. Available on Outback AWD Touring only.



Overseas model shown

subaru.com.au



Overseas model shown

Want to learn more? Visit subaru.com.au to discover the all-new Subaru Outback and register your interest today.

Final Australian specifications of Subaru Outback subject to confirmation and may vary from what is described in this brochure and between model variants. © 2021 Subaru (Aust) Pty Limited. All rights reserved.



SUBARU