

# The Outstanding Chevrolet of Chevrolet History



*You can consider the Chevrolet Six from the view-point of one accustomed to cars of much higher price. It takes its place rightfully side by side with the world's finest cars—even though it is priced so low—from £218.*

*Not only does its six-cylinder engine offer a speed range up to over 60 miles per hour, flashing acceleration, delightful smoothness of operation, and an unusual economy of upkeep; not only does its full ball-bearing steering mechanism and powerful four-wheel brakes assure remarkable ease of control—but these, and many more notable qualities of fine car performance, are matched by the surpassing beauty and comfort of the stylish, smart, and spacious bodies.*

*Learn for yourself how finely the Chevrolet Six is built and how finely it performs.*

*You are extended a cordial invitation to drive this car on a trial run whenever it is convenient to you.*

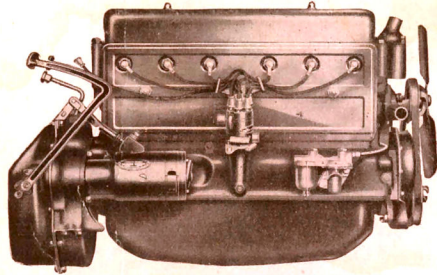
Note—Price given above  
subject to change without  
notice.



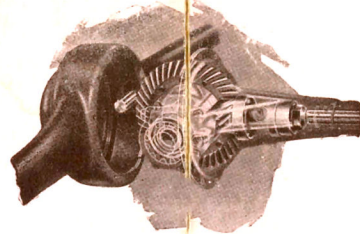
**- a Six in the price range of the four!**

# Quality Features Typical of the World's Finest Cars

*The Chevrolet Six is now available for immediate delivery.*



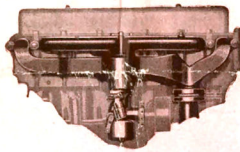
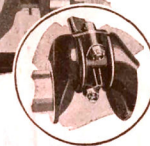
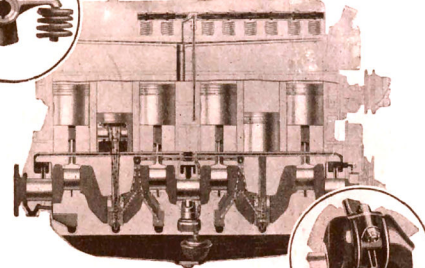
Chevrolet's six-cylinder fully enclosed valve-in-head engine has a high compression non-detonating head. It develops unusual power at comparatively low engine speeds, and has a total displacement of 194 cubic inches.



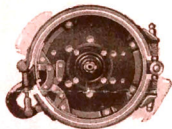
The Chevrolet rear axle has spiral bevelled gears of 31 per cent, nicked steel. The single-piece banjo-type pressed steel housing has a detachable plate for convenient greasing, inspection, and adjustment.



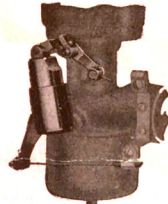
Thorough lubrication of the Chevrolet engine is assured by a positive vane-type oil pump—which delivers a plentiful supply of oil at all times to every bearing surface in the engine, and constantly lubricates the entire rocker arm mechanism.



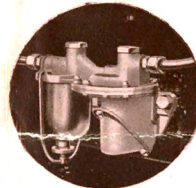
The incoming petrol passes through the exhaust-heated hot-spot manifold. This helps to vaporise the gas and increases the efficiency of the engine.



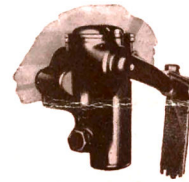
Service brakes on rear wheels are provided with simple adjustment at rear of drums. Non-locking internal expanding brakes operate on front wheels. Separate emergency brakes are of internal expanding type controlled by emergency brake lever.



When the accelerator is suddenly depressed, the automatic acceleration pump sprays an extra supply of petrol into the mixing chamber, giving added power the instant it is needed.



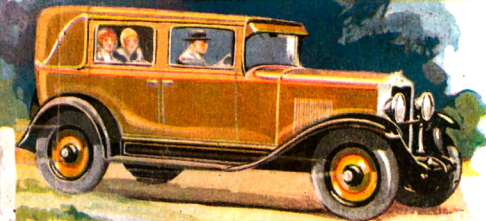
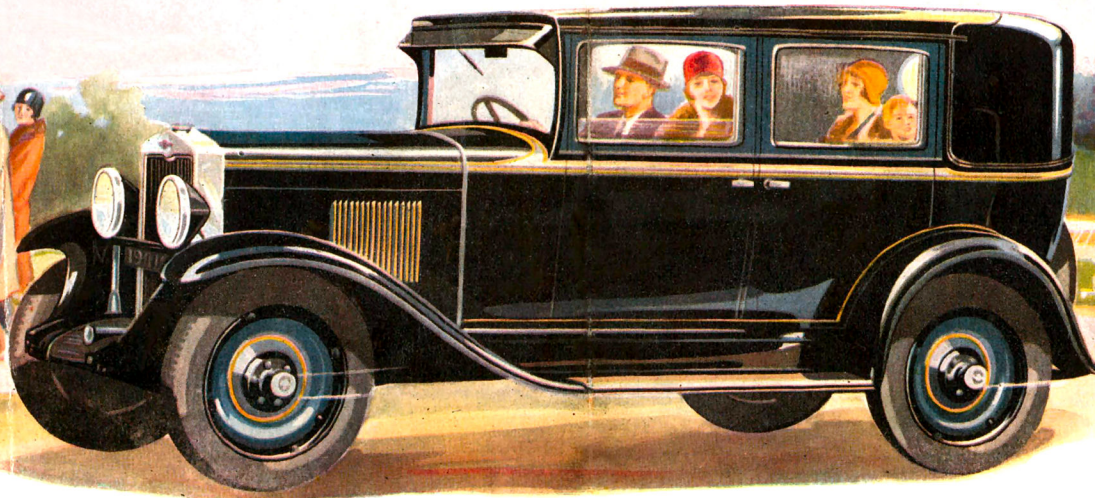
A petrol pump, driven by the crankshaft, pumps petrol to the carburettor. A petrol filter built into the petrol pump insures only clean petrol reaching the carburettor.



Hydraulic shock absorbers on all four wheels give to Chevrolet Six the riding qualities of heavier and far costlier cars.



On the indirectly lighted instrument panel are grouped all controls, including the engine temperature indicator and Delco-Remy theft-proof lock.



*Specifications and Equipment subject to change without notice.*



# SERVICE *Everywhere*

*Warranted  
for One Year by  
General Motors  
Warranty.*

Wherever the Chevrolet owner drives his car, he is always within convenient distance of authorised Chevrolet service—for there are Chevrolet Authorised Dealers equipped to render immediate and expert service, and carrying full stocks of genuine spare parts, in every city, town, and hamlet throughout Australia.

Such widespread service standing at the back of his car is assurance to every Chevrolet owner that, no matter where he travels, his car is sponsored by its manufacturer to make certain that the owner enjoys the fine, dependable performance to which he is entitled.

GENERAL MOTORS (AUSTRALIA) PTY. LTD.

MELBOURNE SYDNEY ADELAIDE  
BRISBANE PERTH