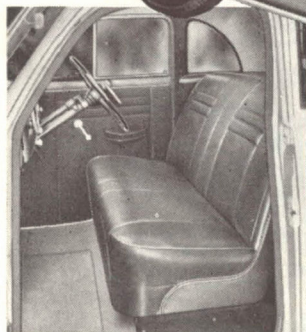
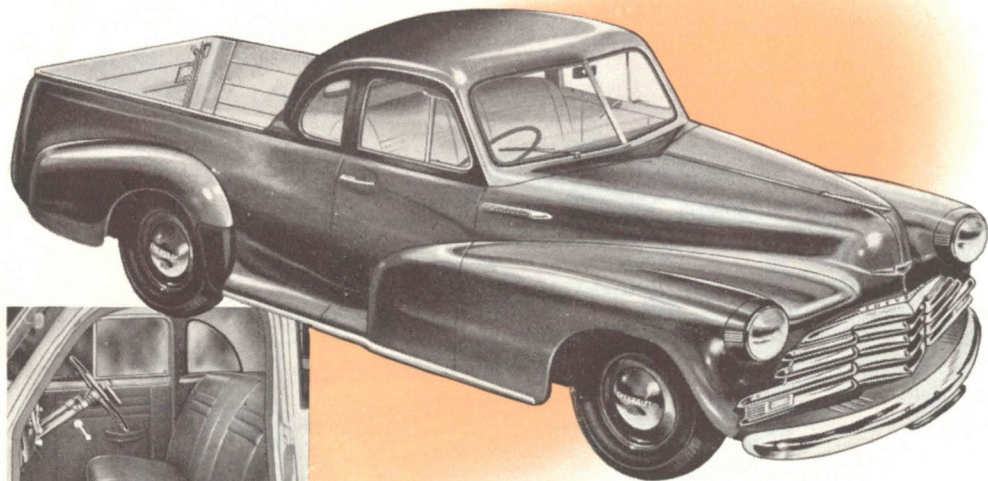


AUSTRALIA'S
SMARTEST AND
MOST POPULAR
UTILITY

CHEVROLET

10-12 cwt. UTILITIES



Interior view of the passenger compartment in Chevrolet 10-12 cwt. Utilities gives some idea of its luxury-car comfort and roominess. Apart from a deep, well-sprung adjustable seat for two adults and two children, there is wide-angle "Pilot Seat" vision, a big parcel shelf behind the seat, and a lock-up glove box.

MODELS:

CHEVROLET OPEN UTILITY.—Max. width of body at floor line, 4 ft. 10½ in.; taildoor opening, 3 ft. 11⅝ in.; max. floor length, 7 ft.; height of sides (floor to top of sides), 1 ft. 8 in.

CHEVROLET WELLSIDE BODY.—Maximum floor length, 7 ft; taildoor opening, 3 ft. 11⅝ in.; max. width of body at floor line, 4 ft. 10½ in.; height of sides, 26½ in.

CHEVROLET SUPREMACY-ably Maintained

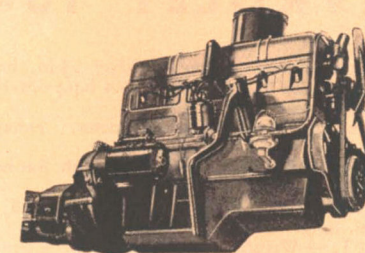
The excellence of design and engineering that has made Chevrolet the world's best seller of motor vehicles for 11 of the past 12 production years, was never more ably demonstrated than in these latest 10-12 cwt. Utilities.

EFFICIENCY: Every feature of the Chevrolet 10-12 cwt. Utility is answer to the popular demand for a flexible, reliable transport unit. Chevrolet's improved overhead valve "Thriftmaster" Engine, Chevrolet's Independent Front Wheel Springing, Chevrolet's Synchro-Mesh Gears and 4-way Lubrication are only a few reasons for the undoubted efficiency of these dual-purpose Utilities.

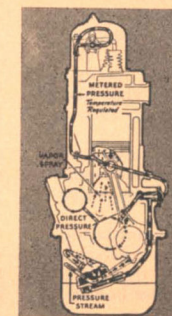
ECONOMY: Virtually, two vehicles in one . . . a smart passenger car and a top-performance transport unit . . . the Chevrolet 10-12 cwt. Utility effects exceptional economies. Not the least of these is due to Chevrolet's improved 90 h.p. "Thriftmaster" engine. Not only is this exclusive Chevrolet power unit economical on petrol but its reliability and freedom from repairs are also characteristic of every engineering feature in these versatile delivery vehicles.

STANDARD EQUIPMENT INCLUDES—A neat "snap-on" waterproof cover for the load compartment when it is not in use.

**MORE POWER...
MORE ECONOMY**



No other engine gives you the power required for fast, smooth delivery work with such an amazing economy of operation as Chevrolet's famous 90 h.p. 6-cylinder overhead valve "Thriftmaster." Never needs replacing. Horsepower is increased to 90, and maximum pulling power is developed at lowest engine speeds—a vital economy factor.

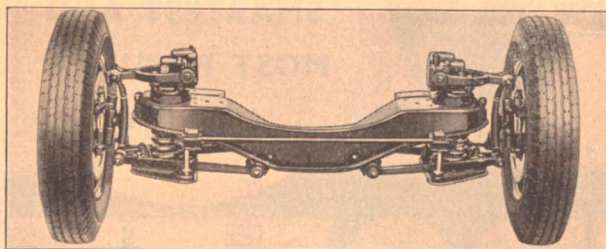


FOUR-WAY LUBRICATION

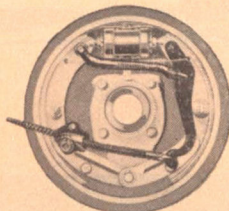
Chevrolet's Perfected 4-way lubrication system provides:

1. Low pressure supply to valve mechanism.
2. High pressure supply to crankshaft and camshaft bearings through drilled passages.
3. Connecting-rod dippers to spray oil to pistons.
4. High pressure jets of oil to flood connecting-rod bearings at high speeds.

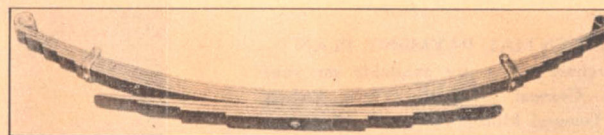
OUTSTANDING MECHANICAL FEATURES MAKE COMFORT AND SAFETY CERTAIN



Exclusive to Chevrolet is the outstanding riding comfort and smoothness provided by **UNITIZED INDEPENDENT FRONT WHEEL SPRINGING.** Front spring suspension, shock absorbers, brakes and steering connections form a single assembly, adjusted and accurately aligned before it is attached, as a unit, to the chassis frame. This typical Chevrolet feature provides protection for fragile loads, and gives passengers the riding comfort of a high quality modern car.



PERFECTED FULL-CONTACT HYDRAULIC BRAKES for the quick, safe stops delivery work demands. In addition, double articulated shoe linkage ensures full contact between drums and lining, making use of the full 161 sq. ins. of brake area.



In perfect co-ordination with Chevrolet's independent front wheel springing, Chevrolet's **"DUAL-RATE" REAR SPRINGS** give unsurpassed riding qualities. These springs are equipped with new tension-type shackles at the rear—the mounting bracket is a strap of heavy spring steel attached to the underside of the side-rail. As the spring is compressed, the pull exerted against the spring by the shackle being in tension, progressively increases the deflection rate: the auxiliary leaves come into action when a full load is carried. Spring movement is controlled by double-acting hydraulic shock absorbers. . . .

CHEVROLET

10 - 12 CWT.

UTILITIES

SPECIFICATIONS

CHEVROLET 10-12 CWT. UTILITIES

ENGINE.—Six cylinders, overhead valve; 3½ in. bore, 3¼ in. stroke; S.A.E. or R.A.C. rating, 29.4 hp.; develops 90 h.p. at 3,300 r.p.m.

VALVES.—Intake, 1-41/64 in. diameter. exhaust, 1-15/32 in.

PISTONS.—Lightweight cast alloy iron, with flat-head and slipper-skirt; surface treated.

CONNECTING ROD BEARINGS.—2-5/16 in. diameter, 1½ in. long. Material, babbitt.

CRANKSHAFT.—Weight, 68 pounds. Counter-balanced. Rubber-floated Harmonic balancer combined with crankshaft pulley. Four main bearings.

BEARINGS.—Four removable steel-backed main bearings. Four removable steel-backed camshaft bearings. Cast babbitt connecting rod bearings.

OILING SYSTEM.—Refill capacity, 8½ pints. Positive pressure feed to crankshaft, camshaft, and valve rocker arms. Connecting rod bearings lubricated by dippers at low speeds, and at higher speeds by pressure jets of oil directed against the dippers. Gear type pump in crankcase, with screen on intake side. Crankcase ventilator.

FUEL SYSTEM.—Carter single-adjustment balanced down-draught carburettor, with accelerating pump. AC air cleaner, silencer and flame arrester. Fuel mixture heated (thermostatic control) in manifold heat chamber. Mechanical high-reserve fuel pump with filter; 13-1/3 gallon tank to rear of driver's seat.

COOLING.—Ribbed cellular copper-core radiator. Capacity, 12½ quarts. Self-adjusting permanently lubricated, ball bearing water pump. Full-length water jackets. Nozzle-spray valve-seat cooling.

ELECTRICAL.—Delco-Remy ignition with automatic and vacuum spark-advance control; octane selector. High-output ventilated generator. Voltage regulator. 13-plate battery, 92 ampere hours. Battery under bonnet. Push-button solenoid motor-operated starter.

CLUTCH.—Diaphragm spring type ventilated. Cushion mounted disc with radial slotted braided moulded facings rivetted on clock spring steel cushions. Permanently lubricated ball throw-out bearing.

TRANSMISSION.—All-silent Synchro-mesh, with helical gears throughout. Vacuum gear-shift on all models.

POWER PLANT MOUNTING.—5-point cushion-balanced.

FRAME.—Box-girder type, with flanged box-section side rails and cross members.

REAR AXLE.—Semi-floating, spiral Hypoid drive gears. One-piece banjo-type pressed-steel housing. One-piece differential case.

REAR SPRINGS.—Dual deflection rate to give good riding qualities, both when lightly and fully loaded.

BRAKES.—Four-wheel hydraulic. 11 in. brake drums, with cast iron braking surface and cooling ribs. Mechanical hand brakes, with under-cowl trigger-release lever.

FRONT SUSPENSION.—Independent Front Wheel Suspension, with built-in double-acting hydraulic shock absorbers. Front ride stabiliser.

STEERING GEAR.—Worm and ball-bearing roller-sector, fully adjustable; worm-mounted on tapered roller bearings; 17½ to 1 ratio. Shock-proof steering.

WHEELS AND TYRES.—Five short-spoke steel disc wheels. Spare wheel inc. STD wheel size 16 x 4.00E.

TYRES.—6.00-16 — 6-ply STD (6.50-16 — 6-ply is optional on 16 x 4.50E wheels).

INSTRUMENT PANEL.—Indirectly lighted, with control for brightness. Includes battery charge indicator, oil-pressure gauge, speedometer, illuminated theft-resisting ignition lock, lighting switch, choke and throttle controls, petrol gauge, headlamp-beam indicator, glove compartment with flush lock, ash receiver, engine heat indicator. Covered openings for installation of radio controls and clock.

EQUIPMENT.—Tool kit, tail and stop light, rear vision mirror, vibrator horn, super-beam headlamps with separate parking lamps. Adjustable driver's seat. No-draught ventilation. Front bumper. Scuff-plates. Electric windscreen wiper and adjustable sun visor. Rubber pads on clutch and brake pedals. Dome lamp. Parcel shelf. Safety glass in windscreen and side windows—concealed running boards. Cowl ventilator—armrests on both doors.

WHEELBASE.—116 inches.

Specifications and Equipment Subject to Change Without Notice.

PROTECTIVE OWNER SERVICE POLICY.

For 90 days or 4,000 miles of operation, you are protected against defective workmanship or material under the terms of General Motors-Holden's Ltd. unusual Owner Service Policy. In addition to this, you are entitled to two thorough inspections and adjustments of your Chevrolet without any charge whatsoever. Genuine Chevrolet Spare Parts, and Expert Service are available throughout Australia.

G.M.A.C. CONFIDENTIAL PAYMENT PLAN

Convenient hire-purchase terms are available on your Chevrolet through General Motors' OWN finance Company. Because General Motors Acceptance Corporation is the largest Hire Purchase Institution in the world, it is able to offer low rental charges, and arrange a payment plan fitted to your individual requirements. Your local dealer can explain the G.M.A.C. Plan and arrange payments to suit you.

GENERAL MOTORS-HOLDEN'S LIMITED

BRISBANE

SYDNEY

MELBOURNE

ADELAIDE

PERTH