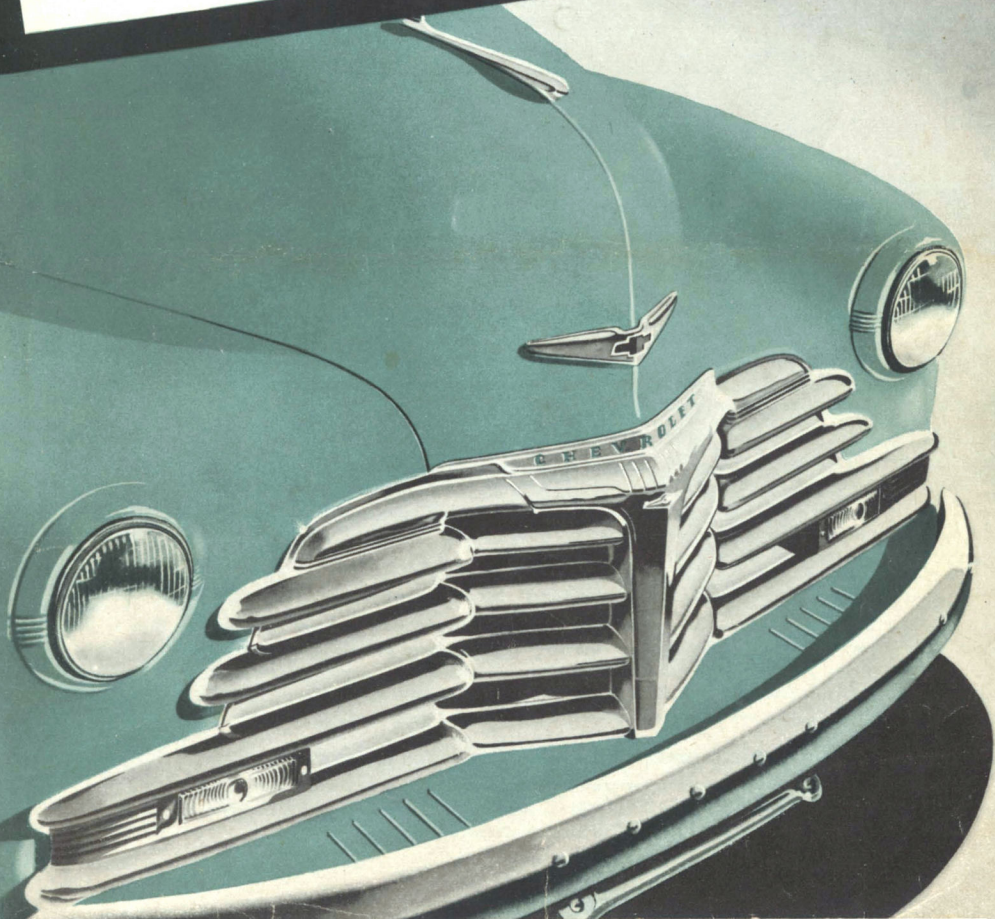


When it comes to delivering the goods this

# CHEVROLET

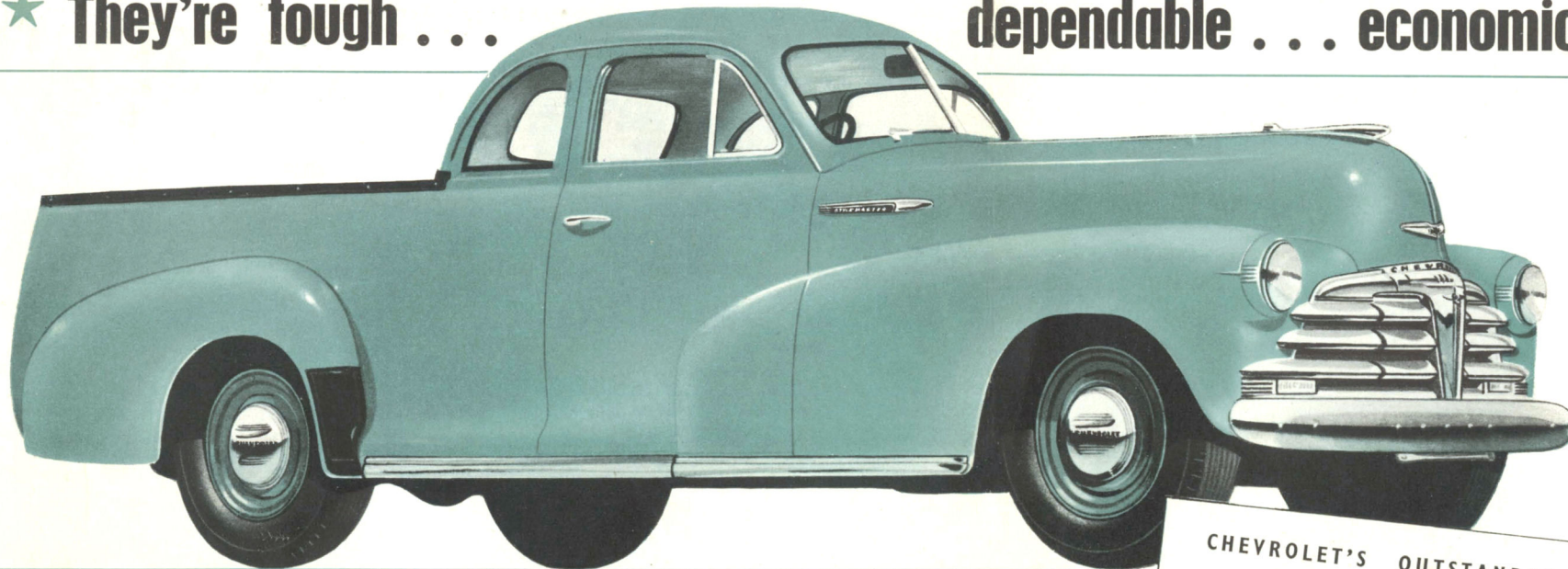
**10-12 CWT. UTILITY**

is the talk of the Town



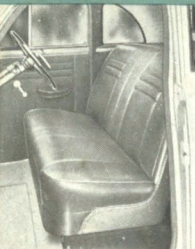
★ They're tough . . .

dependable . . . economical and comfortable



Here's the utility that's built by Chevrolet—that puts you right up front in style, speedy delivery and comfort. Chevrolet have been the world's best sellers of motor vehicles in 12 of the last 13 production years, and this job brings with it a background of solid reliability and an economy that's a Chevrolet byword.

**AHEAD WITH GOOD LOOKS AND STYLING . . .**



One glance is sufficient. This model combines all the sleek streamlined beauty of the passenger car with the practicability of the utility. When you're not delivering the goods, you're proud to take the whole family visiting. They're proud, too, of the fine upholstery, the gleaming chromium radiator grille and finishings. It's Chevrolet's all-purpose utility—for economical business work and for comfortable leisure-time relaxation.

**PASSENGER CAR COMFORT**

Just open the door and slide in behind the wheel. Car comfort indeed. Note the unobstructed floor space, the deep, wide, roomy seat adjustable for both leg-room and height, and seating 3 adults with room to spare. There's Chevrolet's vacuum-assisted steering column gear shift for easier changing, wide angle pilot seat vision, a big roomy shelf behind the seat, and a lock-up glove box on the dash. Car roominess, comfort and luxury.

**Extra safety in the all-steel coupe.**

It's beautiful but it's tough. The all-steel welded coupe gives plenty of solid resistance—it's built to stand up to hard work and hard knocks. And safety glass all round gives maximum protection.

**NEW LARGE CAPACITY LOAD COMPARTMENT**

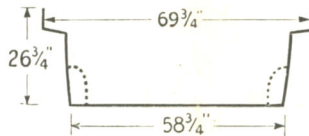
Approximately 50 cubic feet—and you'd be surprised just how much that holds. Tough and extra strong, too, load compartment is of pressed steel all-welded construction, and the hardwood floor has steel skid strips. Sides are constructed with outer and inner steel panels welded together forming a box-like section for greater strength and durability. The heavy duty slam-type concealed locks on either side of the tailboard have a special provision to prevent rattling and spread of pillars.

**EASY TO HANDLE 'ROUND TOWN—SOLID FOR COUNTRY WORK**

In crowded city streets, in tight delivery corners, you can whip in, deliver the goods, be away and hardly notice the traffic. She handles like a car but has enough husky solidity to sit on those country roads like a veteran and take the rough with the smooth with scarcely a murmur.

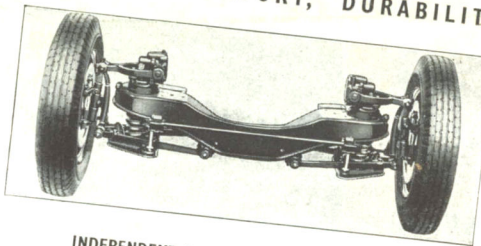


**Chevrolet Open Utility**—Max. width of body at floor line, 4 ft. 10 1/2 in.; taildoor opening, 3 ft. 11 1/2 in.; max. floor length, 7 ft.; height of sides (floor to top of sides), 1 ft. 8 in. Standard equipment includes a neat "snap on" waterproof cover for the load compartment when it is not in use.



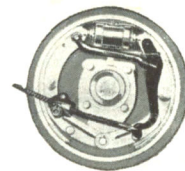
**Chevrolet Wellside Body**—Max. floor length, 7 ft.; taildoor opening, 3 ft. 11 1/2 in.; max. width of body at floor line, 4 ft. 10 1/2 in.; height of sides, 26 1/2 in.

**CHEVROLET'S OUTSTANDING MECHANICAL FEATURES GIVE COMFORT, DURABILITY, ECONOMY and SAFETY**



**INDEPENDENT FRONT WHEEL SPRING**

This Chevrolet feature adds much to your driving comfort and safety. Front spring suspension, shock absorbers, brakes and steering connections form a single assembly, adjusted and aligned before it is attached, as a unit, to the chassis frame. This provides greater protection for fragile loads and gives riding comfort of the modern car.

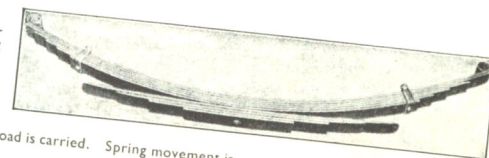


**FULL-CONTACT HYDRAULIC BRAKES**

Chevrolet's perfected full-contact hydraulic brakes for the quick, safe stops delivery work demands. In addition, double articulated shoe linkage ensures full contact between drums and lining, making use of the full 164 sq. ins. of brake lining area.

**"DUAL-RATE" REAR SPRINGS**

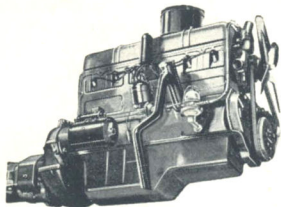
These springs are equipped with new tension-type shackles at the rear—the mounting bracket is a strap of heavy spring steel attached to the underside of the side-rail. As the spring is compressed, the pull exerted against the spring by the shackle being in tension, progressively increases the deflection rate; the auxiliary leaves come into action when a full load is carried. Spring movement is controlled by double-acting hydraulic shock absorbers.



Spring movement is controlled by double-acting hydraulic shock absorbers.



## The famous 90 H.P. "THRIFTMASTER" O.H.V. Engine packs a punch ECONOMICALLY!

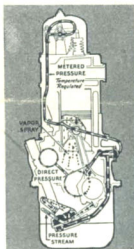


Chevrolet's overhead valve "Thriftmaster" can do more work on a gallon of fuel than any other type of engine of the same displacement in general use. This 90 h.p. 6-cylinder typhoon gives maximum pulling power at low engine speeds—where you need it most with deliveries—a vital economy factor. And such Chevrolet "exclusives" as: between cylinder cooling; pre-heating of fuel mixture; octane selector; cast alloy pistons; 4-bearing balanced crankshaft; and all silent synchromesh transmission, are the reasons for Chevrolet's history of trouble-free performance.

## 4-WAY LUBRICATION!

This Chevrolet feature ensures that every engine part receives just the amount of lubrication it needs. It gives constant and effective lubrication at any speed and unparalleled oil economy.

1. Low pressure supply to valve mechanism.
2. High pressure supply to crank-shaft and camshaft bearings through drilled passages.
3. Connecting-rod dippers to spray oil to pistons.
4. High pressure jets of oil to flood connecting-rod bearings at high speeds.



## NEW THREE-POSITION IGNITION SWITCH

This new 3-position switch has a vertical "On" position, and both locked and unlocked "Off" positions, permitting the owner, if he wishes, to take the key and yet garage attendants can drive utility. The key is still required to lock and unlock the glove box.

## NEW THERMAL CIRCUIT BREAKER REPLACES FUSE

All lights in the utility are protected by the circuit breaker. If an overload or short circuit occurs, the points of this current limit relay, open and close, thus protecting the wiring and battery as well as allowing intermittent operation of the lights.

**GENERAL MOTORS - HOLDEN'S LIMITED**  
BRISBANE · SYDNEY · MELBOURNE · ADELAIDE · PERTH

## Specifications:

### CHEVROLET 10-12 CWT. UTILITIES

**Engine.**—Six cylinders, overhead valve; 3½ in. bore, 3½ in. stroke; S.A.E. or R.A.C. rating, 29.4 h.p.; develops 90 h.p. at 3,300 r.p.m.

**Valves.**—Intake, 1-41/64 in. diameter. Exhaust, 1-15/32 in.

**Pistons.**—Cast alloy iron, with flat-head and slipper-skirt; surface treated.

**Connecting Rod Bearings.**—2-5/16 in. diameter, 1½ in. long. Material, babbit.

**Crankshaft.**—Counter-balanced. Rubber floated Harmonic balancer combined with crankshaft pulley. Four main bearings.

**Bearings.**—Four removable steel-backed main bearings. Four removable steel-backed camshaft bearings. Cast babbit connecting rod bearings.

**Oiling System.**—Re-fill capacity, 8½ pints. Positive pressure feed to crankshaft, camshaft and valve rocker arms. Connecting rod bearings lubricated by dippers at low speeds, and at higher speeds by pressure jets of oil directed against the dippers. Gear type pump in crankcase, with screen on intake side. Crankcase ventilator.

**Fuel System.**—Carter single-adjustment balanced down-draught carburettor, with accelerating pump. A.C. air cleaner, silencer and flame arrester. Fuel mixture heated (thermostatic control) in manifold heat chamber. Mechanical high-reserve fuel pump with filter; 13½ gallon tank to rear of driver's seat.

**Cooling.**—Ribbed cellular copper-core radiator. Capacity, 12½ quarts. Self-adjusting permanently lubricated, ball bearing water pump. Full-length water jackets. Nozzle-spray valve-seat cooling.

**Electrical.**—Delco-Remy ignition with automatic and vacuum spark-advance control; octane selector. High-output ventilated generator. Voltage regulator. 13-plate battery, 92 ampere hours. Battery under bonnet. Push-button solenoid motor-operated starter.

**Clutch.**—Diaphragm spring type ventilated. Cushion mounted disc with radial slotted braided moulded facings rivetted on clock spring steel cushions. Permanently lubricated ball throw-out bearing.

**Transmission.**—All-silent Synchro-mesh, with helical gears throughout. Vacuum gear-shift on all models.

**Power Plant Mounting.**—5-point cushion-balanced.

**Frame.**—Box-girder type, with flanged box-section side rails and cross members.

**Rear Axle.**—Semi-floating, spiral Hypoid drive gears. One-piece banjo-type pressed-steel housing. One-piece differential case.

**Rear Springs.**—Dual deflection rate to give good riding qualities, both when lightly and fully loaded.

**Brakes.**—Four-wheel hydraulic. 11 in. brake drums, with cast iron braking surface and cooling ribs. Mechanical hand brakes, with under-cowl trigger-release lever.

**Front Suspension.**—Independent Front Wheel Suspension, with built-in double-acting hydraulic shock absorbers. Front ride stabiliser.

**Steering Gear.**—Worm and ball-bearing roller-sector, fully adjustable; worm-mounted on tapered roller bearings; 17:1 to 1 ratio. Shockproof steering.

**Wheels and Tyres.**—Five short-spoke steel disc wheels. Spare wheel inc. STD wheel size 16 x 4.00E.

**Tyres.**—6.00-16 6-ply STD (6.50-16 6-ply is optional on 16 x 4.50E wheels).

**Instrument Panel.**—Indirectly lighted, with control for brightness. Includes battery charge indicator, oil-pressure gauge, speedometer, new 3-position ignition switch, lighting switch, choke, and throttle controls, petrol gauge, headlamp-beam indicator, glove compartment with flush lock, ash receiver, engine heat indicator. Covered openings for installation of radio controls and clock.

**Equipment.**—Tool kit, tail and stop light, rear vision mirror, dual Aertone horns, super-beam headlamps with separate parking lamps. Adjustable driver's seat. No-draught ventilation. Front bumper. Scaff-plates. Electric windscreen wiper and adjustable sun visor. Rubber pads on clutch and brake pedals. Dome lamp. Parcel shelf. Safety glass in windscreen and all windows. Concealed running boards. Cowl ventilator. Armrests on both doors.

**Wheelbase.**—116 inches.

Specifications and Equipment Subject to Change without Notice.

## G.M.A.C. Confidential Payment Plan

Convenient Hire-Purchase Terms are available on your Chevrolet Utility through General Motors' own finance company. Because General Motors Acceptance Corporation is the largest Hire-Purchase institution in the world, it is able to offer low rental charges, and arrange a payment plan fitted to your individual requirements. Your local dealer can explain the G.M.A.C. plan and arrange payments to suit you.

## Protective Owner-Service Policy

The unusual General Motors-Holden's Ltd. Owner-Service Policy protects you against defective workmanship or materials for 90 days or 4,000 miles of operation. You are also entitled to two thorough inspections and adjustments of your Chevrolet Utility without charge. Chevrolet Utility spare parts and expert service available throughout Australia.