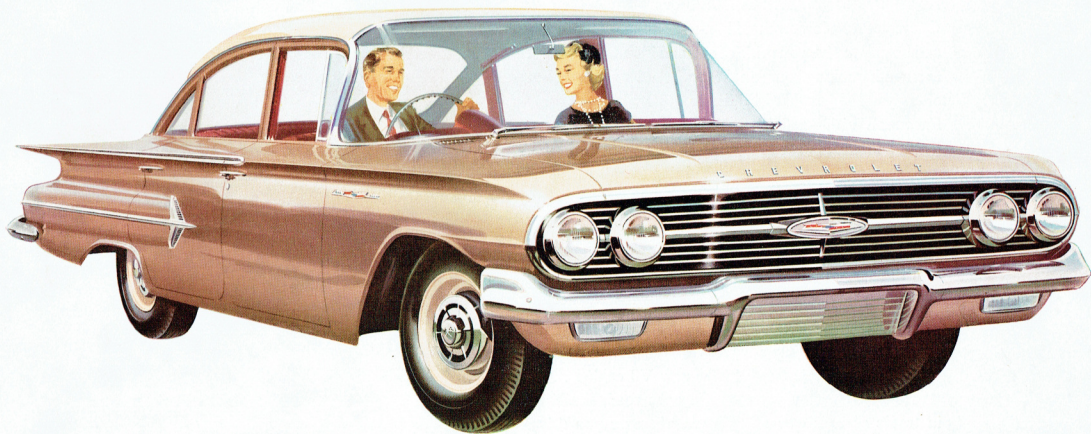
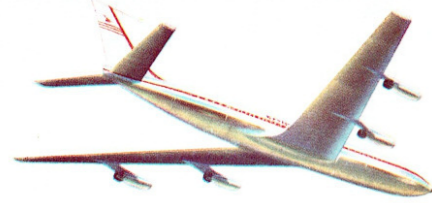


THE NEW  *CHEVROLET*





The nearest thing in motoring to the thrill of jet age flight...

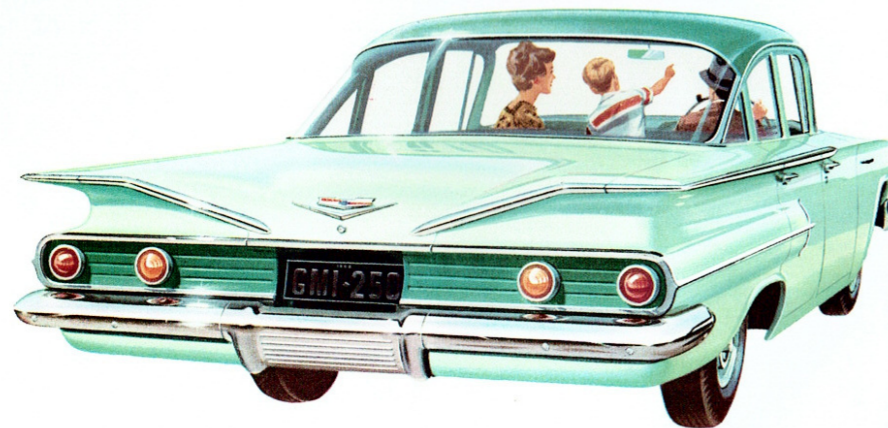
AS THRILLING TO DRIVE as it is to own—that's the new Chevrolet . . . a low-swung, flight-streamed vision of grace and beauty to give you pride of ownership in full measure, to smooth out long hours on the road. And now Chevrolet offers you the gem-hard brilliance of new Magic-Mirror Lacquer Finish—a finish that stays lustrous and new-looking for years with an absolute minimum of polishing. You need only wash Chevrolet to bring out all its colour richness.

Inside the new Chevrolet, too, you find luxury and beauty wherever you look, plus a new lower, narrower transmission tunnel that offers extra leg room, easier relaxation. The luggage compartment has a new low loading height, and all the space you need for really long-holiday baggage.

And all the styling advances of the new Chevrolet have their dramatic equal in the new V8 engine . . . a startling new performance on the open road, flexibility in traffic and whisper soft silence wherever you drive.

Powerglide automatic transmission plays *its* big part in Chevrolet motoring pleasure . . . moving you away from every stop in one unbroken stride of power.

Long, low, clear-cut beauty . . . allied with amazing new engine performance — that's the wonderful story of the new Chevrolet . . . a story you must experience to believe.



The new Chevrolet offers you interior luxury, magnificently appointed for your comfort, adding to the sheer pleasure of Chevrolet ownership. Tastefully tailored upholstery

in genuine leather, colour matched to fashionable new exterior colours, ensures long lasting beauty. The passenger space has sofa wide seats for broad shoulders, ample room for long legs.

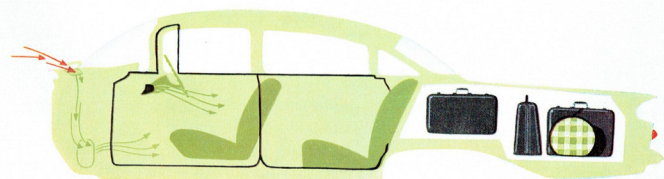


Chevrolet soars to
new heights of
grace and elegance...

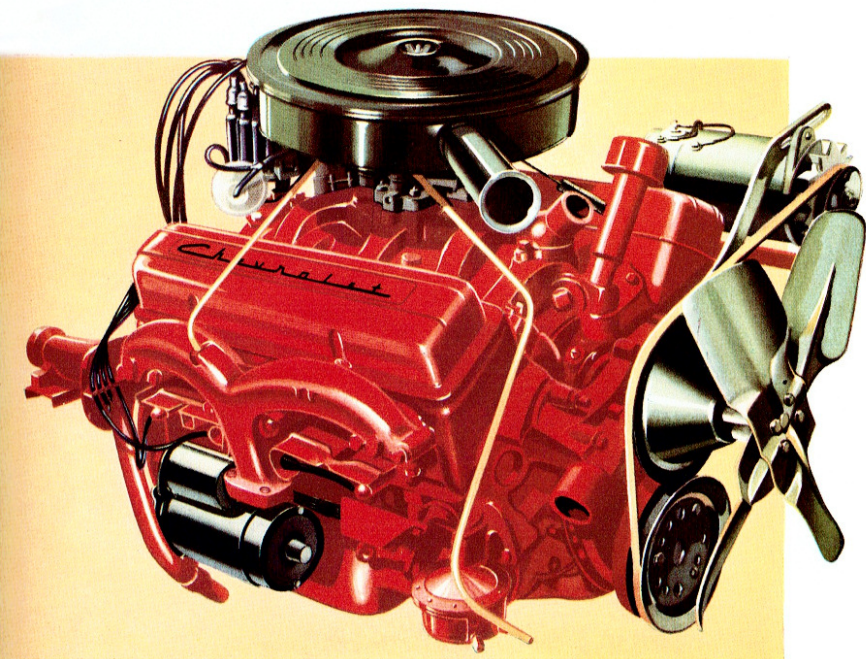
ALL THE WAY from clean forward thrust of the new unified grille to graceful flare of the luggage compartment lid, Chevrolet offers you styling of which you'll be proud for years to come. Extending right forward to the centre of the front door, the deeply sculptured cove and wing-like overhang, decorated with bright moulding, give the new Chevrolet a wonderful new sense of action. Right through its whole glamorous length, the new Chevrolet

carries an unmistakable air of distinction, prestige and beauty wherever you drive.

Magic-Mirror—the exclusive new GMH Car finish—keeps showroom lustre much longer than conventional finishes . . . has greatly increased resistance to chipping and staining by road tar and harsh oils. It adds to the resale value of your new Chevrolet.



Controlled ventilation air is drawn from high above the ground to ensure dust and fume free air intake for the whole passenger compartment. The lower loading luggage compartment gives over 30 cubic feet of clear load space.

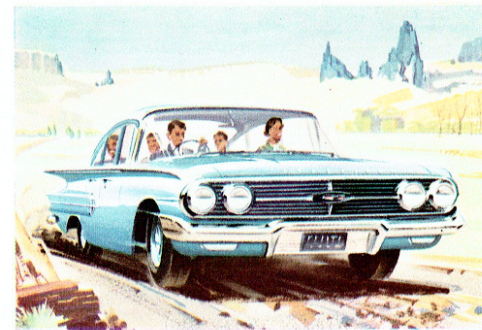
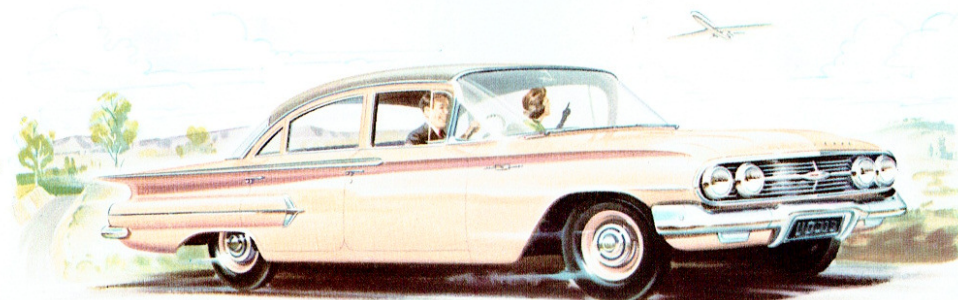


NEW TURBO-FIRE 170 B.H.P. ENGINE

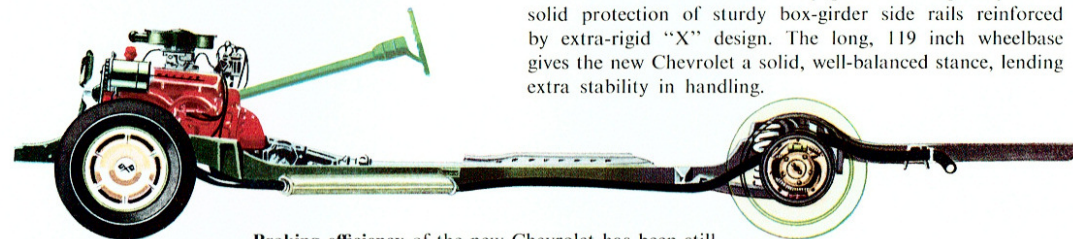
With its new 8.5 compression ratio Turbo-fire V8 valve-in-head engine, already proved and improved over millions of miles, the new Chevrolet reaches a great new peak of performance. Drive where you will, you'll be conscious of the power of this wonderful new Chevrolet V8 engine — power waiting to be called into flashing response at the touch of your toe. And Powerglide Automatic Transmission is the perfect partner to the new V8 Chevrolet engine, making driving simple *and* exhilarating—under every condition of road and traffic.

Swift, smooth take-off with Powerglide Automatic Transmission

For real driving pleasure, the new Chevrolet brings you the world famous Powerglide automatic transmission—unsurpassed in automatic driving. Engineered for exceptionally durable performance, Powerglide stands alone for silky smooth operation all the way from stop to top speed in one unbroken surge of power. There are no “steps” in the operation of Powerglide—the engine automatically selects the *one* right drive ratio.

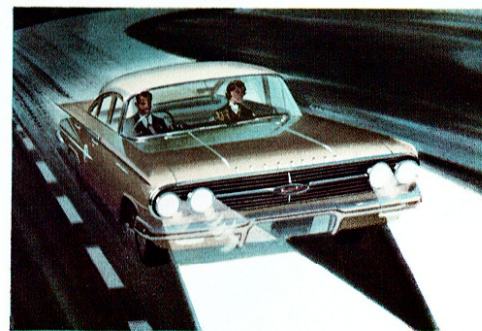


Full coil suspension gives you incredibly smooth riding over even the roughest roads. Husky coil springs at every wheel soak up shock before it ever reaches the passenger compartment. And new, larger body mounts — positioned in a new pattern — give a relaxing, hushed silence to the ride by eliminating vibration.



The new Chevrolet **X-built safety girder frame** gives you the solid protection of sturdy box-girder side rails reinforced by extra-rigid “X” design. The long, 119 inch wheelbase gives the new Chevrolet a solid, well-balanced stance, lending extra stability in handling.

Braking efficiency of the new Chevrolet has been still further improved, requiring less pedal pressure yet giving better distribution of effort between front and rear brakes for surer, safer stops.



The **twin headlights** of the new Chevrolet give you greater night driving safety under all road and weather conditions. Each of the twin lamps is more widely separated to provide an even better arc of illumination. Tail lights are larger and in a new circular shape.

Electric windscreen wipers are fitted, giving constant-speed operation at any time, regardless of engine speed.

Specifications

ENGINE TYPE: 48 h.p. (R.A.C.) valve in head, V8, 8.5 to 1 compression ratio, max. gross b.h.p. 170 at 4,200 r.p.m., cubic capacity 283 cu. ins., Bore and Stroke 3.875" x 3", max. gross torque 275 ft./lb. at 2,200 r.p.m.

PISTONS: Aluminum alloy.

CRANKSHAFT: Counter balanced. Vibration Damper.

OILING SYSTEM: Full and metered pressure.

FUEL SYSTEM: Two barrel down-draught carburettor with automatic choke, accelerating pump and fast idle mechanism. Dry element air cleaner, silencer and flame arrester. Fuel mixture heated (Thermostatic Control). Tank capacity 16.06 imp. gallons.

COOLING SYSTEM: Capacity 14.59 imp. quarts. Self adjusting permanently lubricated water pump with by-pass.

ELECTRICAL SYSTEM: Delco-Remy Ignition system, centrifugal and vacuum spark advance control. Ignition coil — high intensity spark. Delco-Remy generator with voltage and current regulator, Delco-Remy starter, key turn starter switch.

TRANSMISSION: Powerglide automatic transmission with hydraulic torque converter and planetary gear system for reverse and low. Drive positions selected with selector lever mounted on steering column. Five positions available (left to right on selector panel), Low, Drive, Neutral, Reverse, and Park.

FRAME: X-design in box-section girder.

FRONT SUSPENSION: Independent coil springing with stabilizer. Direct double acting hydraulic shock absorbers.

REAR SUSPENSION: Independent coil springing with four point control linkage. Direct double acting hydraulic shock absorbers.

REAR AXLE: Semi-floating type with hypoid-drive gear of 3.08 to 1 ratio.

DRIVE SYSTEM: Hotchkiss drive. Two piece propeller shaft.

BRAKES: Four wheel self-energising hydraulic. Mechanical parking brake. Total braking surface 199.5 sq. ins.

STEERING GEAR: Recirculating ball, fully adjustable. Ratios — Gears 24 to 1, Overall 28 to 1. Relay type linkage.

WHEELS AND TYRES: Five — steel disc. 7.50-14 x 4 ply tubeless tyres on wide base rims.

WHEELBASE: 119 ins. Overall length 210.8 ins., width 80.8 ins., height (unloaded) 58.1 ins.

LIGHTS AND HORNS: Dual sealed beam headlamps. Parking lamps mounted beneath front bumper. Dual tail and stop lights. Rear licence plate light. Dome light. Dual matched horns. Flashing turn signal lamps front and rear. Glove compartment light. Courtesy light switches operated by front doors.

BATTERY: 12 volt, 9 plate, 50 amp. hr.

INSTRUMENTS: Speedometer, engine temperature and fuel gauges. Generator charge, oil pressure and high beam warning lights. Variable indirect instrument cluster lighting.

CONTROLS: Illuminated 4 position ignition lock with key turn starting. Light switch, air intake controls, and control for two speed self parking twin electric windshield wipers. Automatic windshield washer.

EXTERIOR: Stainless steel body side moulding. Curved panoramic windshield. Push button door handles. Same key operates front door locks, glove compartment lock and luggage compartment lock. Two tone colours available at no extra cost.

INTERIOR: Seat cushions and squabs upholstered in single tone leather. Plastic foam seat pads in both seat cushions. Carpet on front and rear floors. Individually controlled ventilators at either side of dash. Ventipanes on front doors, winder operated. Two extensible sun visors. Arm rests on all doors. Foot rest, rear seat. Assist straps with coat hooks on rear roof rails. Cigarette lighter in instrument panel. Ash trays front and rear. Rear view mirror.

Specifications and equipment subject to change without notice. Ask about the GMH warranty and protective owner service policy. Confidential hire purchase arrangements are available through GMAC, General Motors' own hire purchase company.

General Motors-Holden's Limited

THE V8 CHEVROLET

...takes you into a whole new
world of motoring pleasure

