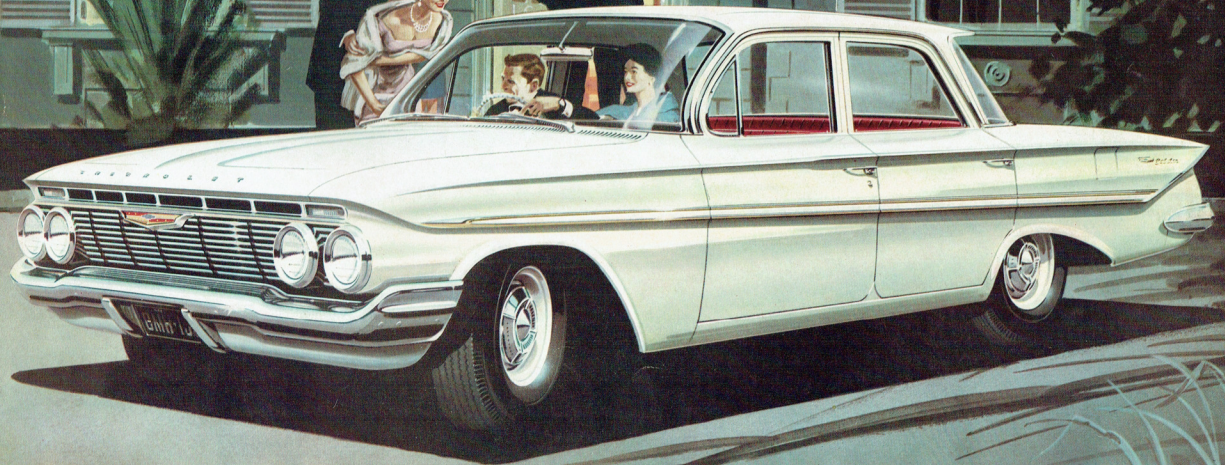


CHEVROLET

A new concept of grace and styling!



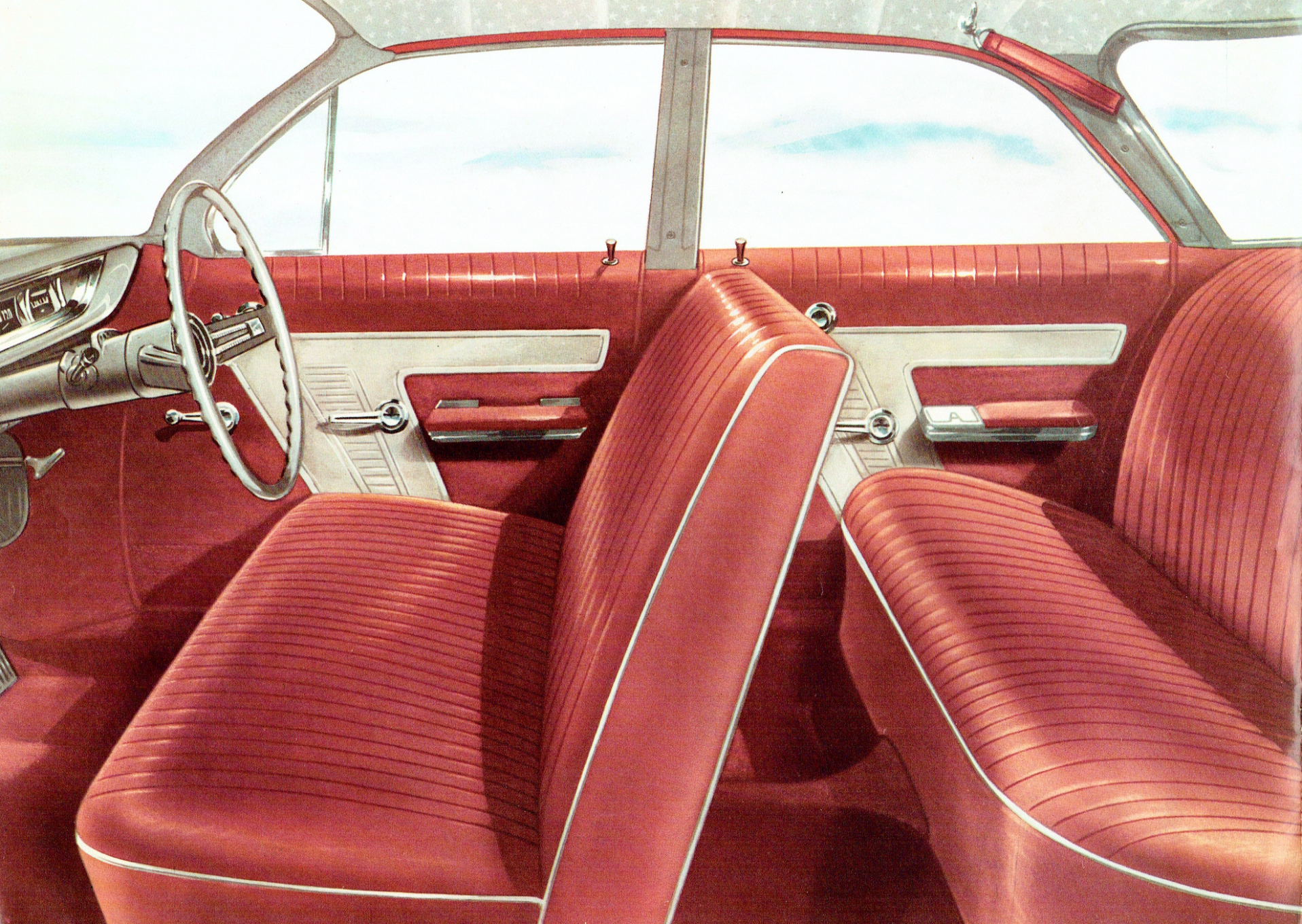
*Style setting
beauty...
in the new
Chevrolet V8*



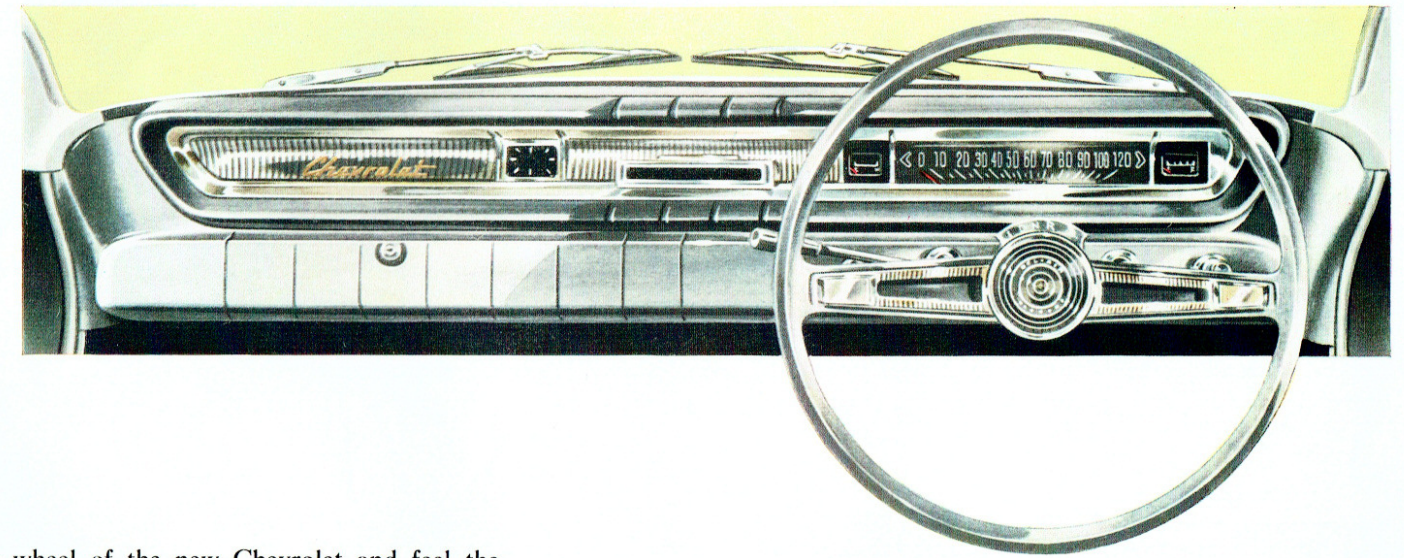
Here's the sleek new shape of Chevrolet. From crisp, trim radiator grille to low swept rear fenders, Chevrolet gives an impression of unerring good taste. There's a new lower roof line, yet the new Chevrolet gives more room inside in the dimensions that mean most to your comfort! There's more front seat head and leg room . . . more foot room in the rear compartment. Outside, exclusive fade-resistant GMH Magic-Mirror Acrylic Lacquer

Finish in a new range of colours keeps imported Fisher Body panels lustrous and new looking . . . requires no polishing for up to three years . . . resists chipping, cracking and staining. Chevrolet gives you all the spirited performance of the economical Turbo-Fire V8 engine, coupled with Powerglide Automatic Transmission. And Chevrolet's full coil suspension front and rear cradles you in comfort over the roughest roads.

The new Chevrolet—styled and planned for those who demand the best



Superb luxury on every hand...

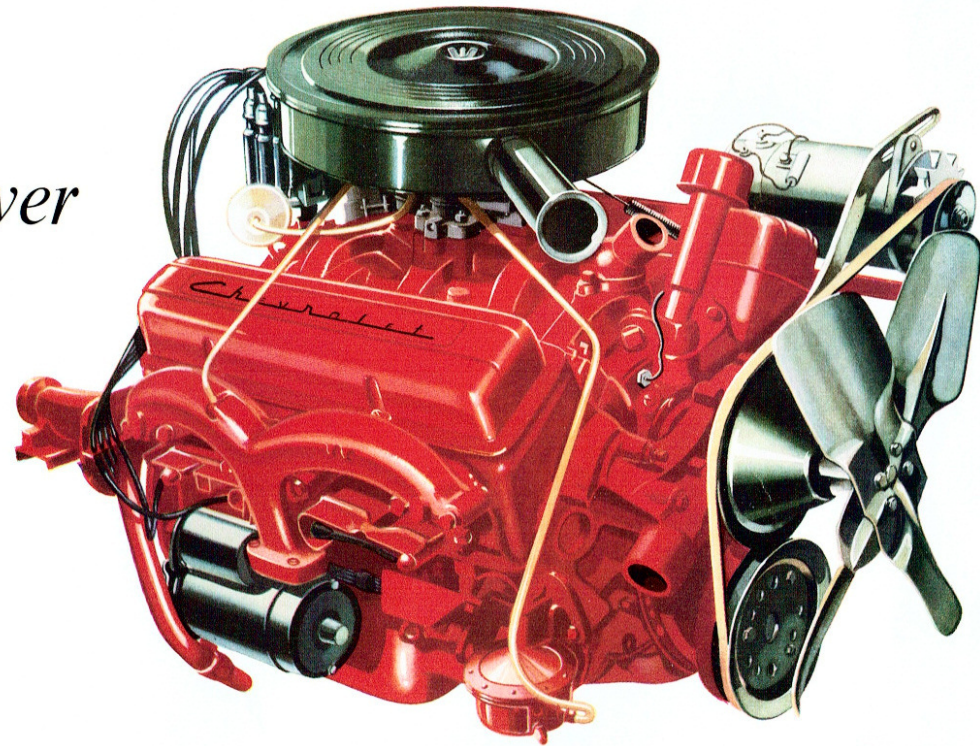


Slide in behind the wheel of the new Chevrolet and feel the incomparable luxury of glove-soft leather upholstery. Sink your feet in the deep pile carpet on the floor. Enjoy all the interior refinements that are the hallmark of Chevrolet quality and good taste. This all adds up to the kind of comfort that makes your ownership of Chevrolet so satisfying.

INSTRUMENT PANEL

Here is the graceful sweep of the new Chevrolet instrument panel, with new instrument grouping. All the instruments are positioned right in front of you — each control right at your fingertips. Horn buttons integrated with the new design steering wheel spokes eliminate the need for horn rings and introduce a completely new feature.

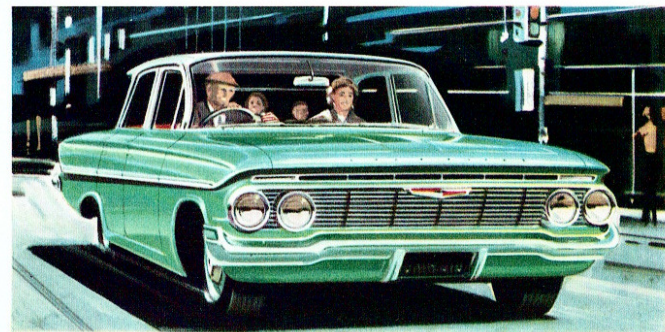
Action-packed V8 Turbo-Fire Power at your command...



POWERGLIDE...

smooth and positive automatic transmission

Powerglide Automatic Transmission keeps every gear change a secret—acceleration is smooth, silent and positive throughout the speed range. Press the accelerator to go, the brake to stop... that's all you do. Powerglide gives you a swift and smooth way of going with never a flutter of hesitation as gears are changed, automatically. More cars throughout the world have been sold with Powerglide than any other automatic transmission—sure proof of Powerglide dependability.



You'll hear only a quiet whisper from its V8 engine as the new Chevrolet responds to the spirited, exciting thrust of 170 b.h.p. It's an engine born with the urge to take you places, to team perfectly with its silent partner, Powerglide Automatic Transmission. You'll be excited by the flashing, silky smooth performance of Chevrolet—on the open road... through crowded city streets; delighted with its unexpected economy of operation.



Load this new luggage compartment—see for yourself how much easier its new design makes the job. Loading height is 10.5 inches lower and the compartment opening extends full width... means less lifting, makes bulky items easier to stow. There's an increase in compartment height for really tall luggage.

New Chevrolet seats are higher, so you sit more comfortably erect, your feet easily reaching the pedals. There's more front seat head room, greater leg room. A narrower drive-line tunnel gives more room for rear seat passengers.

And as you slip out of the spacious new Chevrolet you'll see how easily your head clears the top of the door opening... how simply you step from seat to ground because doors are wider and open wider than ever before and door sills are lower.

SPECIFICATIONS

ENGINE TYPE: 48 h.p. (R.A.C.) overhead valve, V8, 8.5 to 1 compression ratio, max. gross b.h.p. 170 @ 4,200 r.p.m., max. gross torque 275 lb./ft. @ 2,200 r.p.m. Cubic capacity 283 cu. ins., bore and stroke 3.875" x 3".
PISTONS: Aluminium alloy.

CRANKSHAFT: Counter balanced.

OILING SYSTEM: Full pressure.

FUEL SYSTEM: Two barrel down draught carburettor with automatic choke, accelerating pump and fast idle mechanism. Dry element air cleaner, silencer and flame arrestor. Fuel mixture heated (Thermostatic Control). Tank capacity 16.06 imperial gallons.

COOLING SYSTEM: Capacity 14.59 imp. pints. Self-adjusting permanently lubricated water pump with by-pass.

ELECTRICAL SYSTEM: Delco-Remy ignition system, centrifugal and vacuum spark advance control. Ignition coil high intensity spark. Delco-Remy generator with voltage and current regulator, Delco-Remy starter, key turn starter switch.

TRANSMISSION: Powerglide automatic transmission with hydraulic torque converter and planetary gear system for reverse and low. Drive position selected with selector lever mounted on steering column. Five positions available (left to right on selector panel), Low, Drive, Neutral, Reverse and Park.

FRAME: X-design in box section girder.
FRONT SUSPENSION: Independent coil springing with stabilizer. Direct double-acting hydraulic shock absorbers.

REAR SUSPENSION: Independent coil springing with four-point control linkage. Direct double-acting hydraulic shock absorbers.

REAR AXLE: Semi-floating type with hypoid drive gear. 3.08 to 1 ratio.
DRIVE SYSTEM: Hotchkiss drive. Two-piece propeller shaft.

BRAKES: Four-wheel self-energising hydraulic. Mechanical parking brake. Total braking surface 185.6 sq. ins.

STEERING GEAR: Recirculating ball type, fully adjustable. Ratios—Gears 24 to 1, overall 28 to 1. Relay type linkage.

WHEELS AND TYRES: Five—steel disc. 7.50—14 x 4 ply tubeless tyres on wide base rims.

WHEELBASE: 119 ins. Overall length 209.3 ins. Width 78.4 ins. Height (loaded) 55.5 ins.

LIGHTS AND HORNS: Dual sealed beam headlamps. Parking lamps mounted above radiator grille. Dual tail and stop lights. Rear licence plate light. Dome light. Dual matched horns. Flashing turn signal lamps front and rear. Glove compartment light. Courtesy light switches operated by front doors.

BATTERY: 12 volt, 9 plate, 60 amp. hr.

INSTRUMENTS: Speedometer, engine temperature and fuel gauges. Generator charge, oil pressure and high beam warning lights. Variable indirect instrument cluster illumination.

CONTROLS: Illuminated 5-position ignition lock with key turn starting. Light switch, air intake controls and control for two-speed self-parking twin electric windshield wipers. Automatic windshield washer.

EXTERIOR: Anodized aluminium body side moulding. Curved panoramic windshield. Push button door handles. Same key operates front door locks, glove compartment lock and luggage compartment lock. Two-tone colours available at no extra cost. Magic-Mirror Acrylic Lacquer finish.

INTERIOR: Seat cushions and squabs upholstered in single tone leather. Plastic foam seat pads in both seat cushions. Carpet on front and rear floors. Individually controlled ventilators at either side of dash. Ventipanes on front doors, winder operated. Two extensible sun-visors. Arm rests on all doors. Assist straps with coat hooks on rear roof rails. Cigarette lighter in instrument panel. Ash trays front and rear. Rear view mirror.

Confidential hire purchase arrangements are available through GMAC, General Motors own hire purchase company.

Ask about the 4,000 mile or 90 day GMH warranty and 1,000 and 2,000 mile free services.

Specifications and Equipment subject to change without notice.

GENERAL MOTORS-HOLDEN'S PTY. LIMITED

*The look of luxury ...
the feel of flight!*

