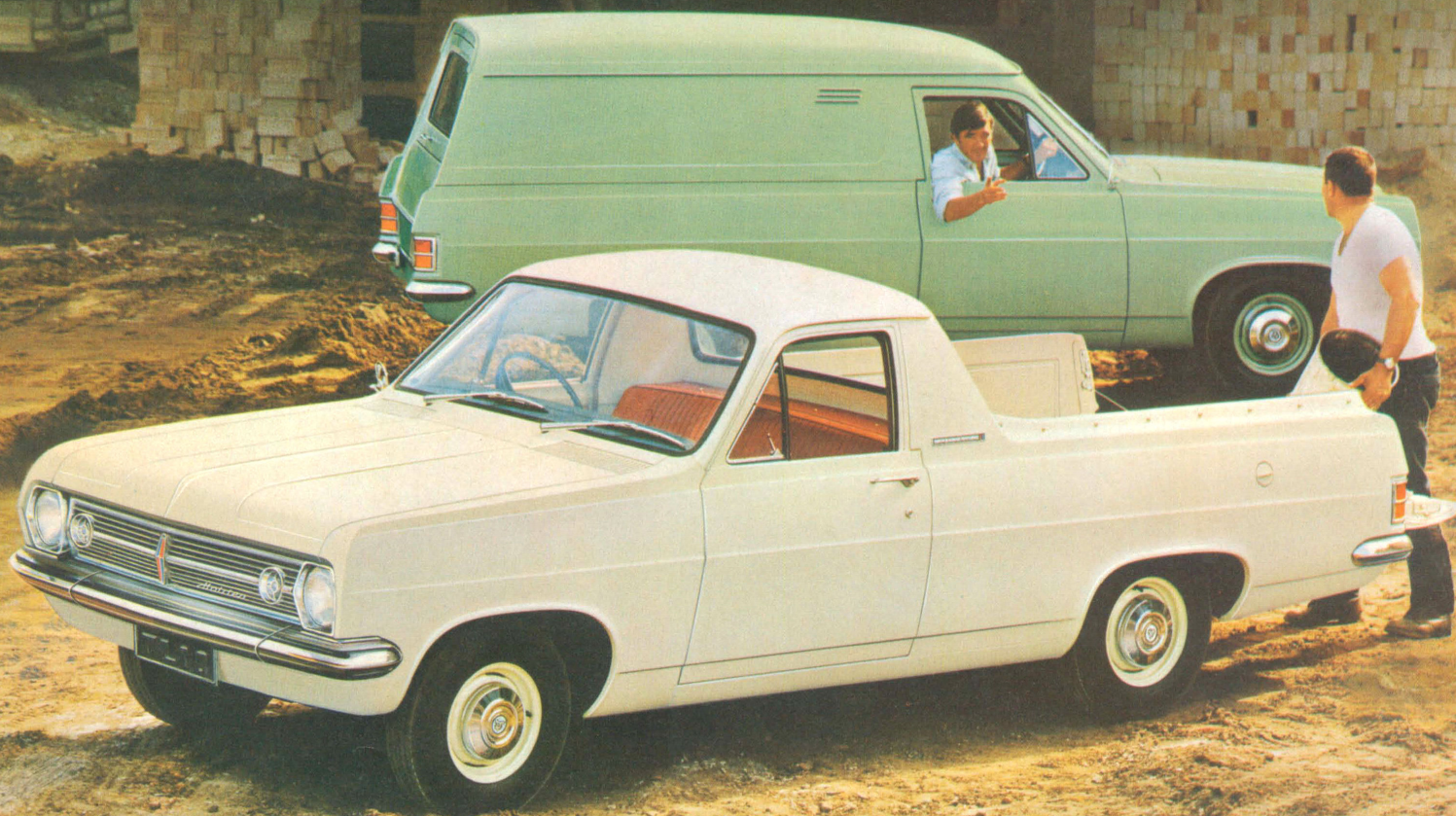


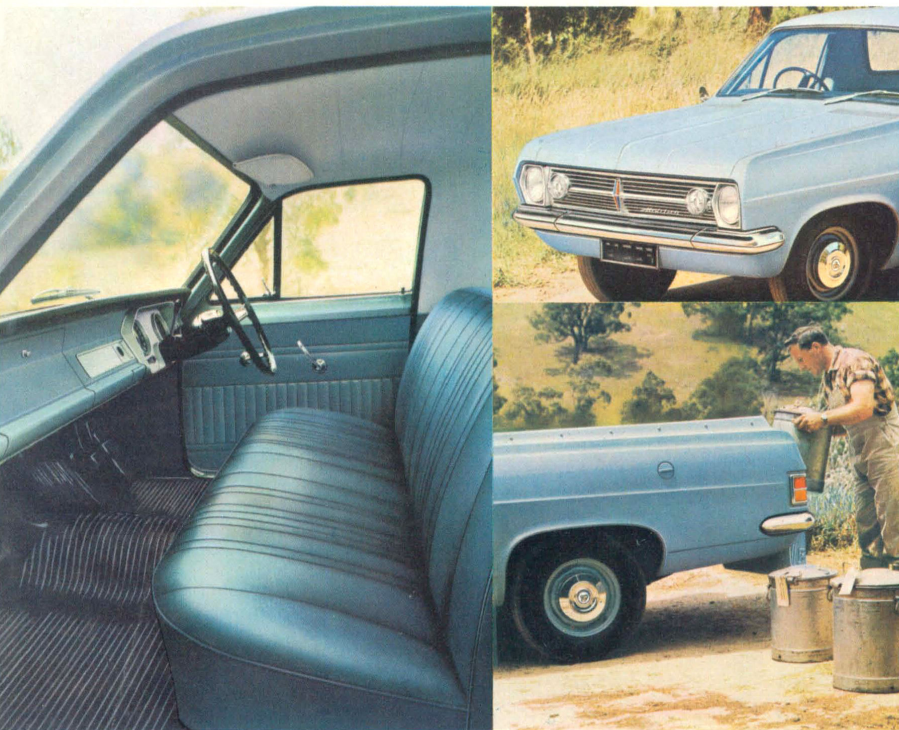
NEW HOLDEN

The Turbo-smooth profit pair!



HOLDEN 1/2 TON UTILITY

*New style...new Turbo-smooth performance
(three increased-horsepower engines)...new
luxury-soft comfort. It all adds up to new value!*



Turbo-smooth Holden Utility gives you a great combination of smart new styling, new comfort, new power. Plus all the practical features you need on the job. The look is unmistakably new . . . gleaming new grille, wrap-around bumpers, robust new front fenders, stylish new layout of headlamps and parking-turn lights. And there's an entirely new range of distinctive colours in exclusive GMH Magic-Mirror finish. All this brings brilliant new appeal to Holden—but wait till you see how much lies behind that air of distinction! Three mighty engines deliver more horsepower than ever before—power made **Turbo-smooth** by Holden's massive seven-bearing crankshaft, superbly quiet hydraulic valve lifters, and a free-flowing exhaust system that gives a new standard of quiet running. A combination no other utility near the price can match! The Holden range of engines offers you a choice for every need—the high-performance 114-hp '161', the husky 126-hp '186' or the twin-carburettor 'X2', packing 145-hp.

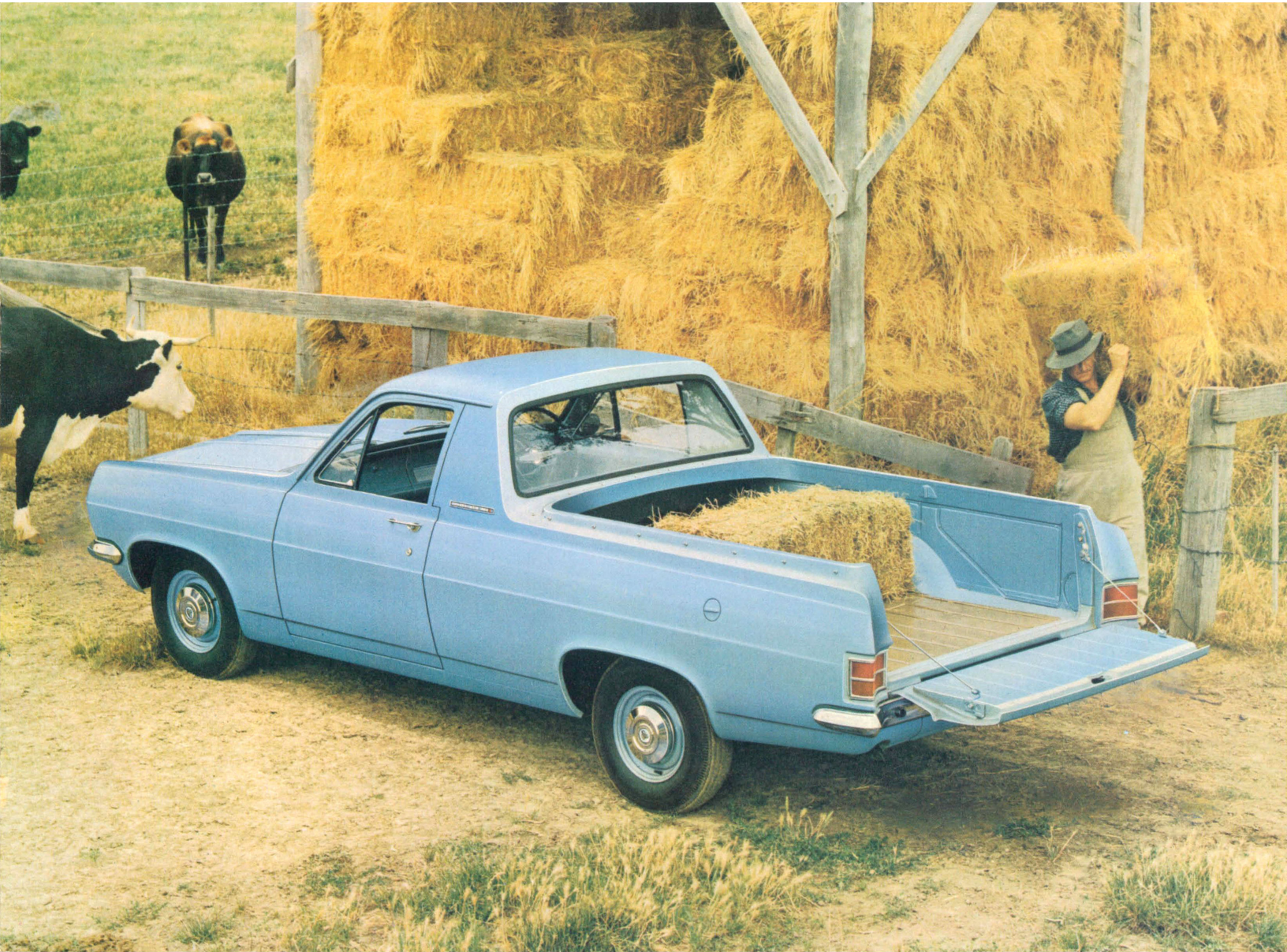
Ready to handle the power you choose is Holden's easy-shift manual transmission or liquid-smooth Powerglide automatic. And if you work in heavy conditions, there's a new positive traction rear axle available as an option. Other options include power steering, and power disc brakes—which take much of the effort out of stopping, are fade-resistant in all conditions and give smooth, straight line stops with the lightest of pedal pressures.

Inside, Holden Utility has more passenger comfort than ever! The sofa-wide seat welcomes you with a new, form-hugging softness, a new look of fine-car quality. Exclusive new Sadlon upholstery combines elegance and toughness, makes a trip in Holden Utility just like driving in your favourite armchair! A new feature is a magnified section in the dome light to floodlight the instrument panel and make map reading easier.

As for room, Holden gives you more than any other coupe utility! Look at the hip and shoulder room, the stretch-out room for your legs—great when you're carrying men to the job with you, or going off on a social trip. You'll find plenty of room for three big people.

And check out that impressive load space! (Capacity, including driver: half a ton.) Even the tailgate opening has been designed to give maximum profit-space. You can carry materials up to 4 ft. wide. Lower the tailgate, and Holden has a clear 8 ft. 3 ins. for long loads—with the strength required to cope with them. In fact, Holden has strength everywhere you need it. 'Double Life' body construction gives you a double floor in the cargo area—an all-steel panel topped by a replaceable floor of composite hardboard and plywood, protected by steel skid-strips. Add Holden's rugged suspension, the specially-contoured front fender inner panels to help prevent corrosion through excess mud build-up—and you've got Australia's toughest coupe utility.

Maintenance? Holden cuts it to a minimum! Lubrication at 12,000 miles, oil changes at 6,000 miles; tappet adjustments eliminated by hydraulic valve lifters; battery life extended by the standard-equipment alternator. All this and the celebrated dependability and trouble-free running of Holden's rugged engines! No wonder Holden utility's such a great proposition, now and at resale time!



HOLDEN PANEL VAN

A stylish new worker...with new Turbo-smooth power...new comfort up front. (And just look at that load space!)



The stylish new Holden Panel Van combines sedan-type comfort for three big people with the practicality of 84½ cubic feet of load space. Its new rugged front end styling adds a fresh touch of distinction to a van that is already an asset to any business.

And to get all this working for you, Holden turns on new Turbo-smooth power from three mighty engines! The 114-hp '161' is a great performer. And you've got the choice of 126-hp '186' or the twin-carburettor 'X2' (145-hp) to provide additional performance if you need it. All three increased-horsepower engines have Holden's rugged seven-bearing crankshaft for smoothness and long engine life; hydraulic valve lifters for quietness and elimination of tappet adjustments. If you drive in traffic a lot, there's the optional Powerglide automatic transmission to do all your gear-changing. And power steering, too, if you wish.

Another option is power disc brakes, with their extra margin of stopping power and resistance to fading in all conditions. Holden's standard drum brakes have 140 sq. ins. of lining area and are self-adjusting (one of many Holden money-savers). They adjust themselves as the brakes are applied when reversing.

The new optional positive traction rear axle also offers great possibilities in panel van work. Ask your Holden dealer about this.

Inside the passenger compartment, Holden Panel Van has a new air of fine-car distinction. See the amount of room you get—all ways. Try the soft comfort of Holden's new bench seat, the luxury 'feel' of the new, exclusive upholstery material, Sadlon. Trim design is new—so is the satin silver finish to the fascia of the padded instrument panel.

And talking of distinction, there's an entirely new range of exterior colours in exclusive GMH Magic-Mirror acrylic lacquer. This gem-hard finish keeps its showroom gloss longer—looks good and protects your investment at the same time (a big thing when you're reselling!).

Load space? Just open the back and see for yourself. You can load materials up to 4 ft. wide. With the tailgate down, you have a flat deck 8 ft. 4 ins. long. Just detach the flexible steel cables that hold the tailgate, drop the gate all the way down, and you can back up against any loading bay.

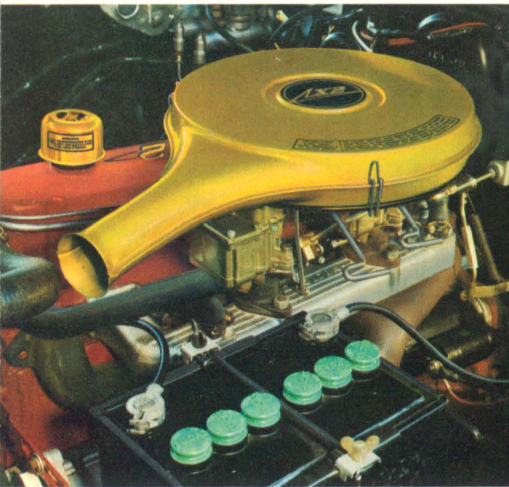
The exclusive 'Double Life' body construction of Holden Utility is also standard with the panel van—including a double floor, with its protective steel skid-strips. You'll find the same practical ruggedness in Holden's famous built-for-Australia suspension; in the big front coil springs and massive cross-member, and the long, tough rear springs . . . all proved by millions of miles of driving.

When you're checking back over all those Holden money-savers, start the list with 12,000-mile lubrications, 6,000-mile oil changes. They're a big profit-factor for a business man with a lot of work waiting to be done.

Everything about Holden is like that—designed to keep your van out on the road, where it belongs!



*New engine power, wider choice
of options...make Holden
a better proposition than ever!*



Three Turbo-smooth engines . . . now packing 114, 126 and 145 hp. These powerful increased-horsepower engines are available on both Holden Utility and Panel Van—the standard 114-hp '161' and optional '186' (126-hp) or 'X2' (145-hp). Holden's 'oversquare' engines, with a new, increased compression ratio of 9.2 to 1, are specially designed for Australian conditions. They combine the performance you need in work vehicles with great fuel economy. Holden's exclusive seven-

bearing crankshaft gives both smoother running and longer engine life; hydraulic valve lifters eliminate tappet noise and periodic adjustment; an alternator saves your battery; a full-flow oil filter gives you the economy of oil-change intervals of 6000 miles or 60 days.

The big '186' and twin-carburettor 'X2' engines, available at moderate extra cost, give you an extra margin of high performance when you need it.

Positive traction rear axle (limited-slip differential): Holden now offers you as an optional extra a limited-slip differential designed to give greater traction on corners, rough ground, in sand or other loose surfaces. So long as one wheel can get a grip, this positive traction axle keeps you going. Ask your Holden Dealer to demonstrate it for you as soon as possible.

GMH Guardian Maintenance Protection Plan: With your new Holden, you get a special booklet which provides you with tear-out coupons for service up to 50,000 miles. The first two services are free—but the coupon system is continuous to ensure that your vehicle is always maintained in top condition. The famous GMH Factory Warranty protects you against defective workmanship or materials for 12 months or 12,000 miles.

Low-cost parts always available: That's one of the great things about Holden—spare parts are always readily available, and at low cost. All parts are made to rigid GMH specifications for easy replacement and long service. Parts and service from factory-trained mechanics for Holden vehicles are available, through more than 600 Authorised Holden Dealers.



Sure, straight-line braking: You can rely on Holden's big, self-adjusting brakes. They give you 140 square inches of lining area for sure, straight-line stops and resistance to fading. Holden brakes are always at peak efficiency. They adjust automatically when applied while the vehicle is being reversed. Power-assisted disc brakes are available as an optional extra, and offer an even greater degree of stopping power. They're fade-resistant under all conditions, answer to the lightest of pedal pressures, with a full sense of control.



Choice of transmissions: Holden gives you a choice of two transmissions. You can have the standard column-shift or the optional Powerglide automatic transmission. Smooth Powerglide is the ultimate in fatigue-free driving, particularly if you spend a lot of time in stop-go traffic. Powerglide has a special 'Low' gear for extra punch and safe passing, and for engine braking on steep hills 'Low' can be selected manually with the steering-column selector. An inbuilt parking lock is incorporated. And with Powerglide you still get excellent fuel economy.



Tough body construction: Holden Utilities and Panel Vans have the strongest body construction in the business. The load compartment has a double floor. It's an all-steel panel topped by a replaceable floor of composite hardboard and plywood protected by steel skid-strips. The body is designed for even distribution of load stresses. Front fender inner panels are smoothly contoured to prevent excessive mud build-up and allow easy cleaning with a water hose. Panel insulation absorbs road noise.



Designed for Australian conditions!

Holden is the only utility or panel van designed to give maximum performance under Australian conditions. Whatever the job, Holden does it better because of this. Nine million torturing miles on the GMH Proving Ground and the motoring experience of nearly 1½ million Holden owners have established the reputation of Holden engines and suspension, its tough frame and transmission, its brakes and steering. When you buy Holden, you buy with confidence.

SPECIFICATIONS

Holden Utility and Panel Van

MECHANICAL — '161' Engine: Six cylinders. Bore, 3.375 ins. Stroke, 3.00 ins. Capacity, 161 cu. ins. Max. brake horsepower, 114 at 4,400 RPM. Max. torque, 157 lbs./ft. at 2,000 RPM. Compression ratio, 9.2:1. Also available with compression ratio 8.2:1. 108 horsepower at 4,400 RPM. Max. torque, 146 lbs./ft. at 2000 RPM. SAE or RAC rating, 27.34 hp.

'186' engine: Six cylinders. Bore, 3.625 ins. Stroke, 3.00 ins. Capacity, 186 cu. ins. Max. brake horsepower, 126 at 4,200 RPM. Max. torque, 181 lbs./ft. at 1,600 RPM. Compression ratio, 9.2:1. SAE or RAC rating, 31.54 hp.

'X2' engine: Six cylinders. Bore, 3.625 ins. Stroke, 3.00 ins. Capacity, 186 cu. ins. Max. brake horsepower, 145 at 4,600 RPM. Max. torque, 184 lbs./ft. at 2,200 RPM. Compression ratio, 9.2:1. SAE or RAC rating, 31.54 hp.

Engine features: OHV in line engine. Oversquare design. Modified wedge design combustion chambers. Seven-bearing crankshaft. Hydraulic valve lifters.

Fuel system: Bendix-Stromberg single barrel down-draft type carburettor ('X2' has twin carburettors). AC fluid-treated replaceable paper element air cleaner and silencer. Fuel tank capacity, 11.5 imp. gallons.

Lubrication: Full pressure lubrication system. AC full-flow disposable-type oil filter with oil non-return check valve.

Cooling: Pressured cooling system with full-length water jackets around each cylinder. Thermostat control. Centrifugal water pump.

Electrical system: 12-volt battery with 44 amp-hour capacity at 20-hour rating, 35 amps. alternator (generator). Integral centrifugal and vacuum automatic advance control.

Manual transmission: Three forward speeds and reverse. Synchromesh on second and top. Gears carburised and shot-peened.

Automatic transmission. Powerglide. Hydraulic torque converter with planetary gear system.

Brakes: Four-wheel hydraulic, duo servo, reverse self-adjusting. Total effective lining area of 140.76 sq. ins.

Suspension: Front: Independent, with front wheel coil springing with short and long arms. Stabiliser bar. Rear: Semi-elliptic rear springs, six leaves. Direct-acting shock absorbers front and rear.

Steering: Recirculating ball. Ratio, 16.8:1. 36½ ft. turning circle.

Wheels and tyres: Demountable disc wheels, 13 x 4.50J. Tubeless 6.50 x 13 x 6-ply medium low profile tyres. Safety rims.

Lighting: Sealed beam headlamps. Foot operating dimmer switch. Dual stop and tail lights. Rear licence plate lamp. Self-cancelling flashing turn indicator lights — front and rear. Parking lights combined with front turn indicator lights. Passenger compartment lamp. Indirect instrument panel lighting. Illuminated selector quadrant (automatic models). Back up lamps standard on automatic models.

BODY — body structure: All steel Aerobilt construction. Dimensions: Wheelbase, 106.0 ins. Track — front, 54.5 ins.; rear, 54.5 ins. Overall length, Utility and Panel Van, 179.8 ins. Overall width, 70.0 ins. Ground clearance, 7.0 ins. Overall height at kerb weight, Utility 59.3 ins.; Panel Van, 67.2 ins.

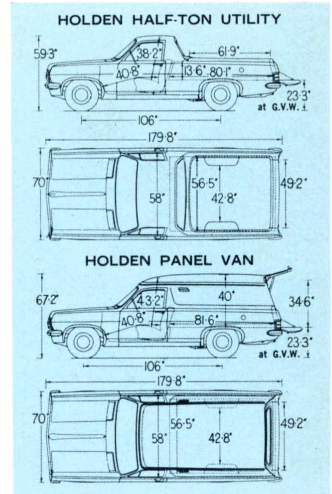
Instrument panel: Safety-padded. Speedometer. Petrol gauge. Water temperature light, oil pressure and generator charging tell-tale lamps. Turn indicator tell-tale lamps. High beam indicator lamp. Five-position ignition/starter switch. Main light switch. Windshield wiper switch. Choke control knob. Ash tray. Glove box with locking lid. Plenum chamber ventilation control lever. Engine hood lock control knob.

Models with 'X2' Engine: Oil pressure gauge, ammeter and water temperature gauge.

EQUIPMENT — both models: Electric two-speed dual windshield wipers. "Modified Zone" windshield. Provision for seat belt installation. Two-spoke dish-type steering wheel with horn actuating rocking bar recessed in spokes. Fully adjustable front seat. Seat fitted with "Z" type springs. Sadlon upholstery. No-draught ventilators with locks. Sun visor. Front door lock operating key also operates ignition/starter switch, lock-on glove box lid, load compartment, tailgate on the panel van. Hold-open door checks. Interior rear vision mirror. (Exterior mirror fitted where required by State law.) Inner front fenders. Door sill, scuff plates. Rubber mat floor covering in passenger compartment. Load compartment floor boards of composite hardboard/plywood board, with painted skid-strips. Counter-balanced engine hood. Estimated kerb weight: Utility, 2603 lb. Panel Van, 2679 lb. Add 39 lb. for auto. transmission.

Payload: Utility and Panel Van, 10 cwt.

Optional Equipment: Powerglide transmission. Power-assisted disc brakes. Positive traction rear axle. Tinted anti-sun windshields. '186' and 'X2' engines. Power steering. Specifications and equipment subject to change without notice.



GENERAL MOTORS-HOLDEN'S PTY. LIMITED: BRISBANE • SYDNEY • MELBOURNE • ADELAIDE • PERTH