

1985 Holden Commodore

Holden Commodore SL sedan and wagon
Holden Commodore Executive sedan and wagon
Holden Commodore Berlina sedan and wagon
Holden Commodore SS sedan

Holden: Australia's Driving Future. 



1985 Holden
Commodore



General Motors-Holden's is proud to present Australia's Driving Future ; the exciting Holden Commodore SL, Executive, Berlina and SS.

These are world class cars with even higher levels of performance, comfort, economy and Holden-bred technology than ever before. They bring a completely new standard of driving satisfaction to the Australian market.

You have a choice of dramatically improved 6-cylinder engines.

Standard on SL, Executive and Berlina is a powerful, Electronic Spark Timing controlled 3.3 litre 6 that's an outstanding 15 per cent more economical.*

An engine of remarkable smoothness that doesn't sacrifice performance thanks to Holden's latest advances in computerised engine management systems.

Optional on SL, Executive and Berlina sedans is a 27 per cent more powerful* ram-charge boosted electronic fuel injection 3.3 litre 6 that delivers startling performance with improved fuel efficiency.

And naturally, for those whose needs go beyond even fuel injected 6-cylinder performance, there is also Holden's potent V8 engine – the dynamic, race-proven 5 litre. The only V8 engine available on Australian cars ; optional on Holden Commodore SL and Berlina sedans and wagons.

The entire Holden Commodore range has undergone a world class upgrading that goes much further than simply cosmetic changes.

A whole series of detail and equipment improvements has made these Holden sedans and wagons the best value-for-money family cars ever produced.

Throughout this new range you'll find an enhanced, world class sense of style, spaciousness and performance that reflects Commodore's European heritage.

You'll also find that Commodore has retained and, in many cases, improved upon its inherent Holden strength and reliability – two great assets born of millions of kilometres of exhaustive testing and development throughout this country, all to make Commodore the ultimate family car for Australian conditions.

The advanced Commodore SL, Executive and Berlina have made true world class excellence an everyday and affordable reality.

Each Holden Commodore will reward you with its own individual level of excellence.

Holden Commodore – world class achievements for Australia.

*Results of GM-H laboratory tests compared to VH Commodore.

World class Value

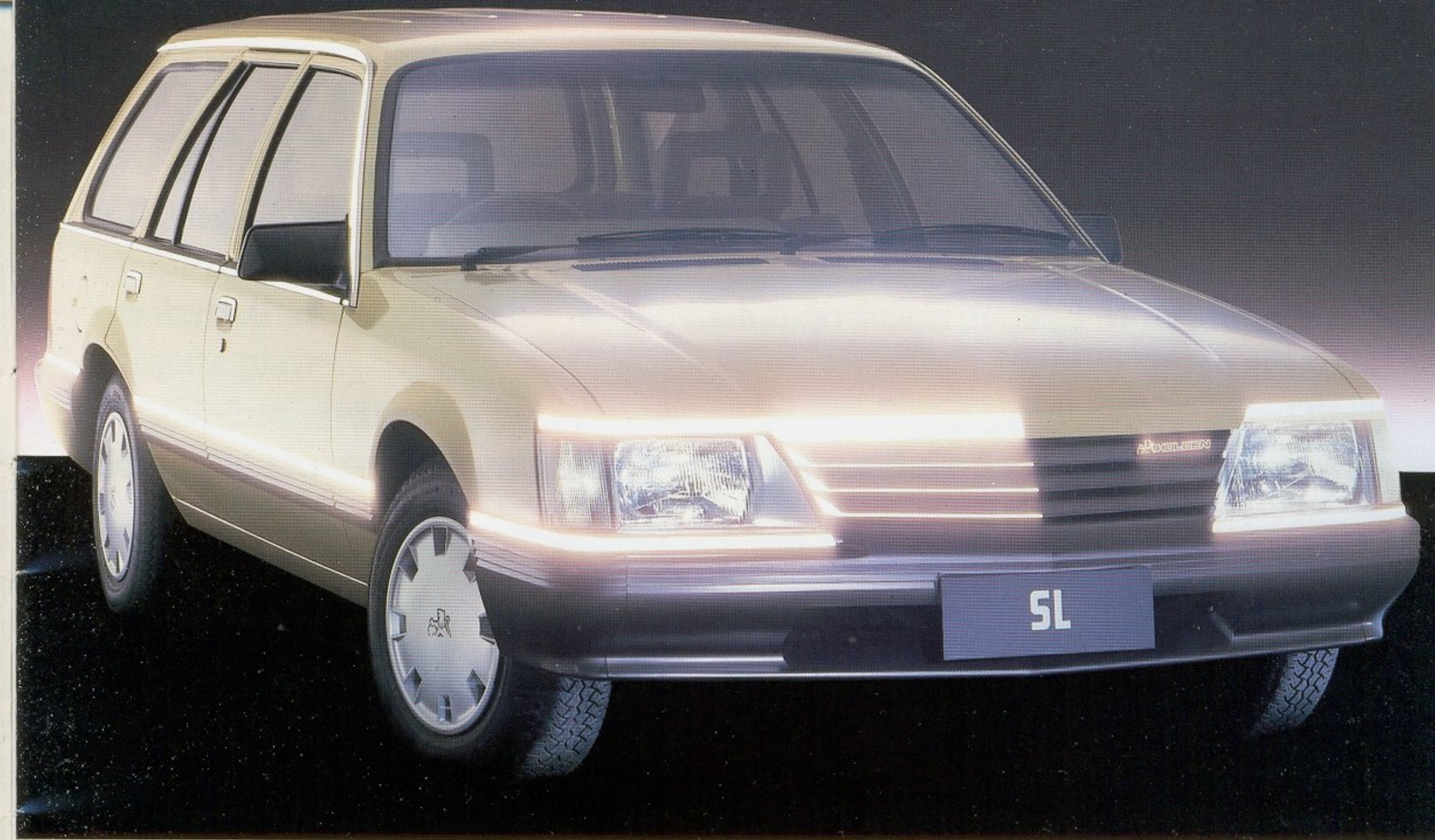
There has always been a need for an advanced family sized car, with a host of rewarding features, at a reasonable price.

Enter the Commodore SL, powered by its 15% more economical* EST (Electronic Spark Timing) 3.3 litre, 6-cylinder engine.

Commodore SL gives you the benefits of the latest technology with advanced new features like electronic touch dash controls and a high-fidelity AM/FM stereo radio cassette player.

Commodore SL sets new standards in comfort for an Australian value car, from its finely woven cloth-upholstered seating, a height adjustable, reclining bucket seat for the driver and thoughtful touches like an electric push-button boot release and day/night mirror.

Here is a car that gives you everything except compromise – never again will you need to sacrifice real power for great economy. In both sedan and wagon, Holden Commodore SL excels in every way, especially in value.



The Executive Choice

Today's Holden Commodore Executive – the sedan and wagon with all the fine features of Commodore SL and more for very little extra.

Commodore Executive is a complete package designed with Australian business needs in mind.

Order an Executive or a fleet of them and you get power assisted rack and pinion steering, floor-shift automatic transmission, 15% more economical*

EST 6-cylinder performance and an exceptional standard of appointments for the price.

Holden Commodore Executive is a special, prestige business vehicle filled with great features like a height adjustable, reclining driver's seat, a laminated, tinted-band windscreen, intermittent wipers, day/night interior mirror, full wheel covers and naturally a high-fidelity AM/FM stereo radio cassette player.

Make a world class business decision and step up to the comprehensively equipped Holden Commodore Executive.

*Results of GM-H laboratory tests compared to VH Commodore.



Holden Commodore Berlina

Imagine an Australian car that offers you loads of world class features; a car which redefines value in Australian family motoring.

This is the exciting Commodore Berlina, a family sized Holden that combines the excellent economy of Electronic Spark Timing (EST) engine control with 3.3 litre, 6-cylinder power.

Berlina has responsive power steering, floor shift, automatic transmission, a height adjustable, reclining bucket seat for the driver with 3-position lumbar support, and there are thoughtful luxuries like rear-passenger reading lamps.

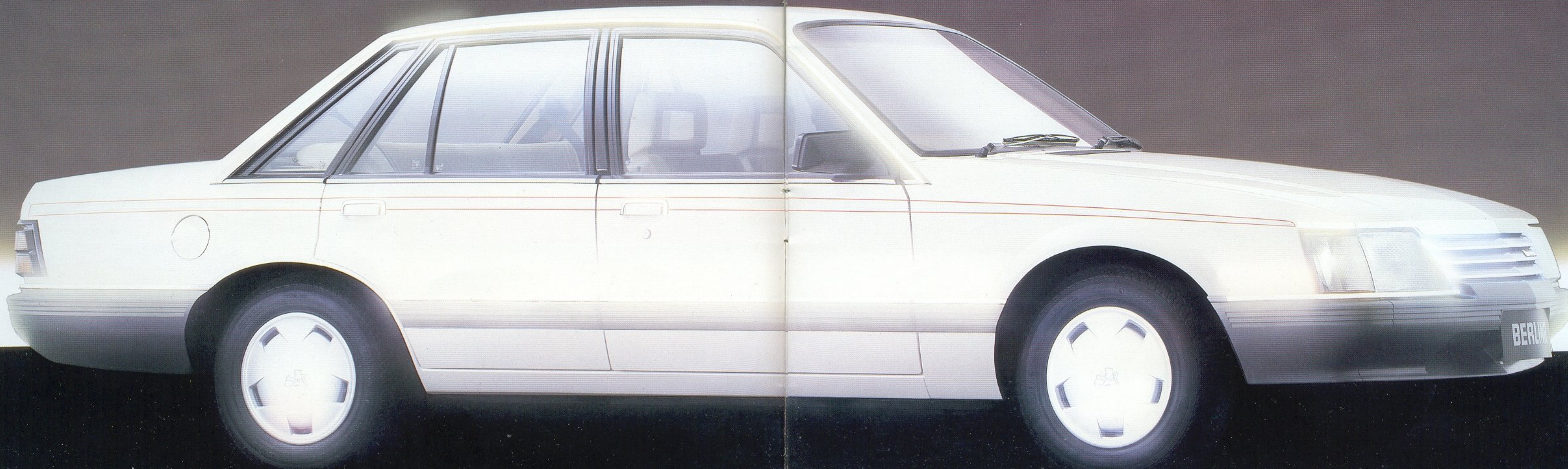
There's high-fidelity car sound like you've never heard before – a stereo,



auto-reverse cassette-radio with electronic touch-tuning, automatic station search and digital frequency read-out for both AM and FM, plus power antenna.

Berlina has the exceptional comfort of high quality ribbed cord-cloth upholstery, cut-pile carpet and your choice of a Berlina wagon with a roof-rack and a tailgate washer/wiper as standard.

If you've ever wanted a world class car with Holden reliability without paying imported prices, here it is – Holden Commodore Berlina.





Holden Commodore SS

With Australia's only V8 engine plus high performance brakes, suspension, transmission and steering, the Holden V8 Commodore SS offers power and comfort which no other car can match for the price.

With its exceptional performance and effortless power you could mistake the Holden V8 Commodore SS for a pure high performance car. But there's much more to it than that.

It will get you from 0-100k in around 6.7 seconds. But it will surround you in armchair luxury. It will get you to 400 metres in a mere 14.9 seconds. But there will be room for 5 passengers and their luggage.

It will tow just about anything you can hook up to it. But it will never run out of breath.

In short the Holden V8 Commodore is a gutsy performer with all the features, roominess and comfort you'd expect in any luxury sedan.



Optional side skirts and rear deck spoiler shown.

Explore Inner Space

Holden Commodore wagons have the largest rear carrying capacity of any Holden wagon ever built and the benefits of world class luxury.

Commodore SL, Executive and Berlina wagons share virtually all the great features of Commodore sedans and give you even more to boot. For example, standard tailgate washer wiper.

Outside, Commodore wagon's full height, one-piece tailgate can be swung gently into action, raised with the help of twin gas struts.

Inside, you'll find a folding rear seat that allows a flat, cavernous loading area undisturbed by the spare tyre, which nestles below the plush carpeting of the amazing 1.83 metre long floor. With the rear seat flat there's enough room for a good-sized mattress or room for holiday luggage – room for just about anything.

Even with the rear seat up to utilize Commodore wagon's exceptional passenger room and comfort, you still have abundant luggage space.

Here are wagons that share the renowned ride and handling of Commodore sedans – wagons that handle brilliantly even when laden to their high design-limits.

Today's Commodore wagons get the 15% more economical*, yet powerful EST 3.3 litre 6-cylinder engine – the same tight turning circle as Commodore sedans and, on Executive and Berlina, power steering and automatic transmission. Berlina wagon also benefits from a roof-rack as standard equipment.

From their illuminated load areas to their quartz-halogen headlamps Holden Commodore wagons are in the same world class as Commodore sedans, with the added bonus of a new dimension in space efficiency.

*Results of GM-H laboratory tests compared to VH Commodore.



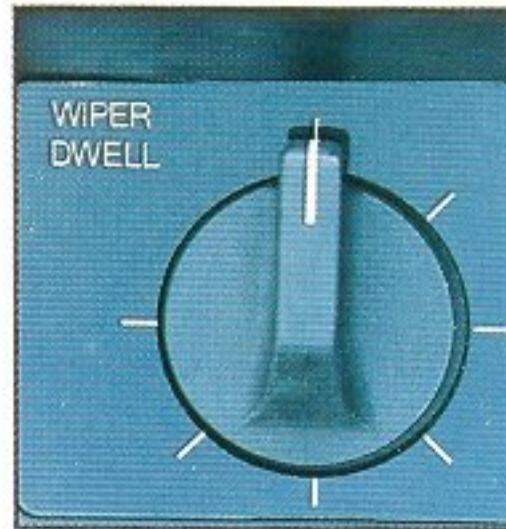
World Class Features

	SL Sedan	SL Wagon	Executive Sedan	Executive Wagon	Berlina Sedan	Berlina Wagon	SS
Exterior							
3.3 l. 6-cyl. engine — EST.	●	●	●	●	●	●	
3.3 l. 6-cyl. engine — Ei. (optional.)	●	●	●	●	●	●	
5.0 l. V8 engine. (optional.)	●	●			●	●	
5.0 l. SS V8 engine.							●
4-speed manual transmission.	●	●					●
3-speed trimatic auto. transmission.			●	●	●	●	●
Power brakes — front disc/rear drum.	●	●	●	●	●	●	
Power brakes — 4-wheel disc.							●
Manual rack and pinion steering.	●	●					
Power (rack and pinion) steering.			●	●	●	●	●
5.50 JJ x 14 steel wheels.	●		●				
BR 78 S14 steel belt radial tyres.	●		●				
6.00 JJ x 14 steel wheels.		●		●	●	●	
CR 78 S14 steel belt radial tyres.		●		●	●	●	
Full wheel covers.	●	●	●	●	●	●	
7.00 JJ x 15 styled cast alloy wheels.							●
ER 60 H 15 steel belt radials.							●
Radial Tuned Suspension.	●	●	●	●	●	●	
Holden Dealer Team suspension.							●
Comprehensive corrosion protection.	●	●	●	●	●	●	●
High-impact polycarbonate bumpers.	●	●	●	●	●	●	●
Bodyside mouldings.	●	●	●	●	●	●	
HDT "SS" styling and identification.							●
Quartz halogen headlights.	●	●	●	●	●	●	●
Tinted upper band laminated w/screen.	●	●	●	●	●	●	●
Tinted side and rear windows.					●	●	
Tailgate window wiper/washer.		●		●		●	
Roof luggage rack.						●	
Body pinstriping.					●	●	
Power antenna.					●	●	
Locking fuel cap.					●	●	●
Interior							
10-outlet, 4-speed heating/vent. system.	●	●	●	●	●	●	●
Electric rear window demister.	●	●	●	●	●	●	●
Manual remote exterior mirrors.	●	●	●	●	●	●	●
Dual horns.							●
Driver/passenger reading "spot" lamps.							●
Remote electric boot release.	●		●		●	●	●
Reclining front bucket seats.	●	●	●	●	●	●	●
Driver's seat height adjuster.	●	●	●	●	●	●	●
Driver's seat lumbar support.					●	●	
Sports Scheel seats.							●
Driver's footrest.							●
Retracting seat belts — front & rear.	●	●	●	●	●	●	●
Rear seat centre armrest.					●		

SL Features



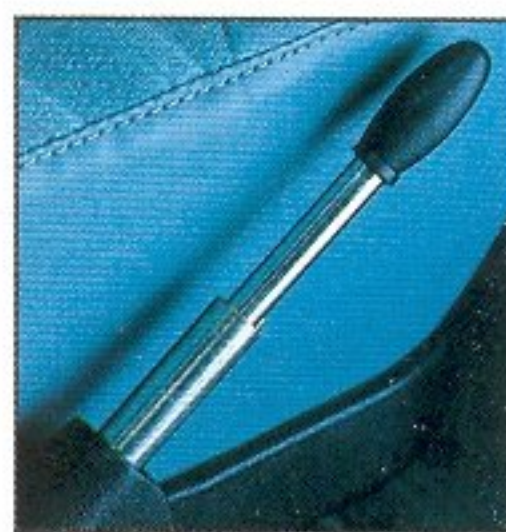
Soft yet durable fine-woven cloth upholstery.



Two-speed wipers with intermittent, variable dwell operation.



Push-button electric boot-lid release.



Telescopic lever actuated driver's seat height adjuster.



Wagon tailgate washer/wiper.

Berlina Features



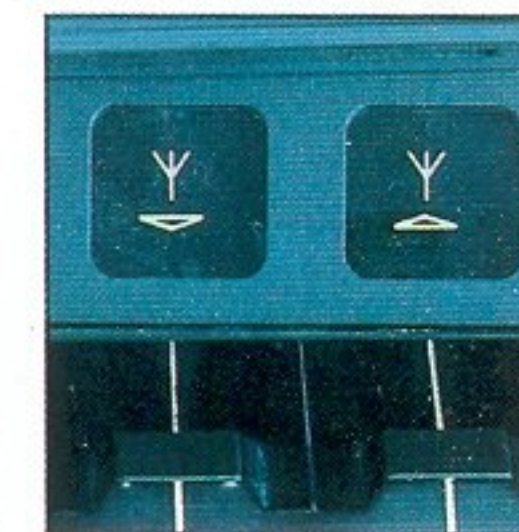
Power rack and pinion steering.



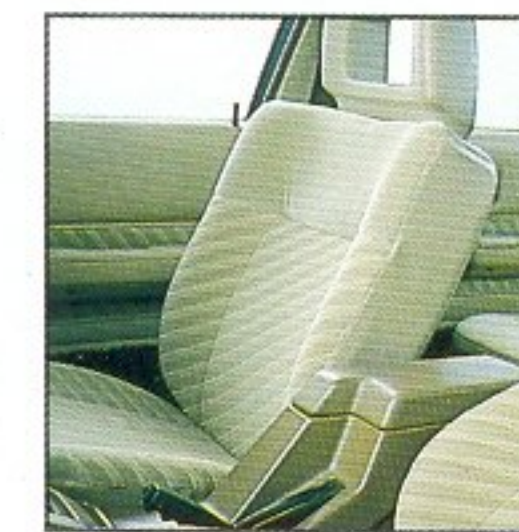
3-speed, floor-shift Trimatic automatic transmission.



High-fidelity, electronic touch-tune AM/FM stereo radio-cassette system.



Automatic power aerial with electronic touch-control height adjustment.



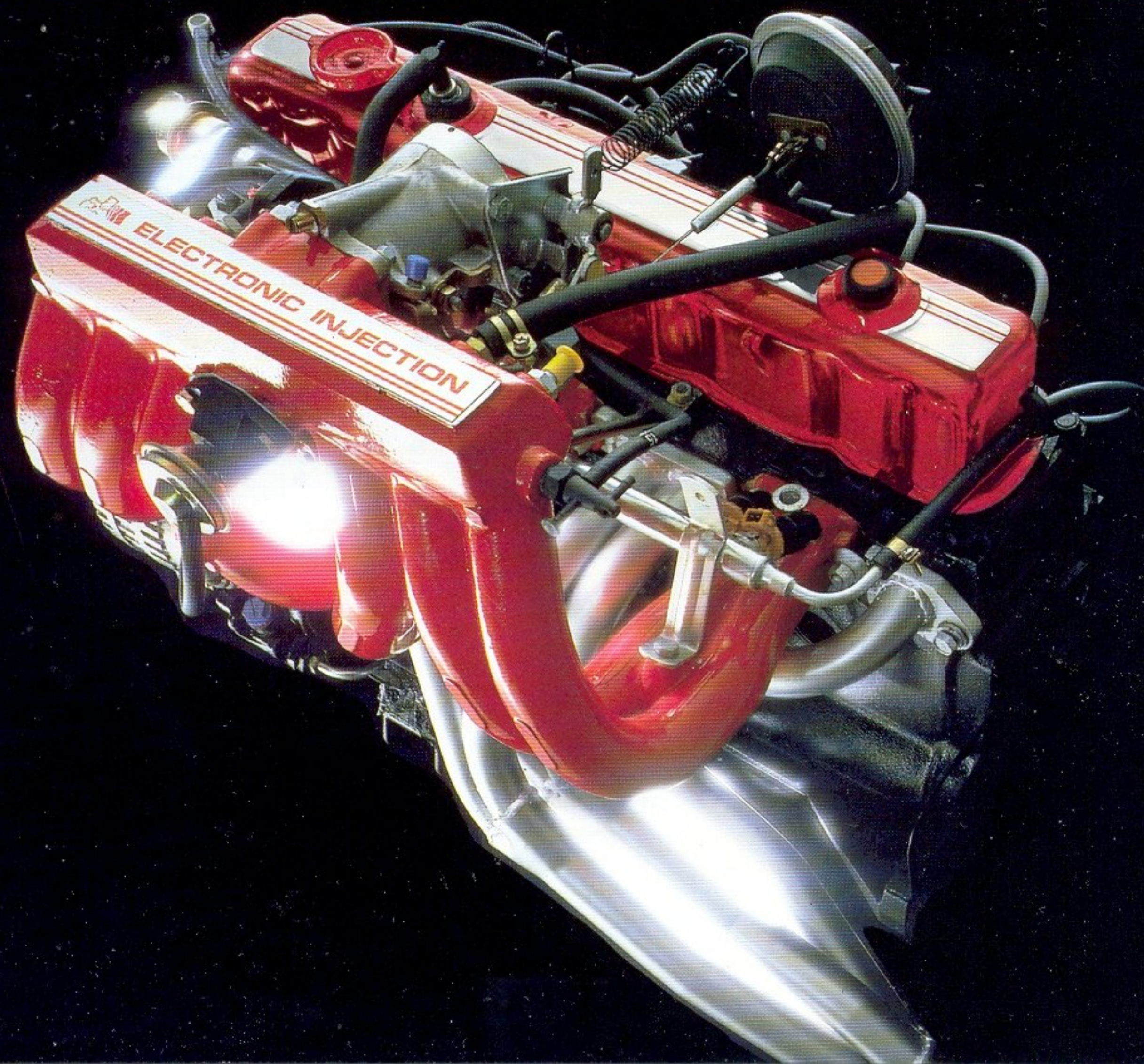
3-position lumbar support in driver's seat.

World Class Features

	SL Sedan	SL Wagon	Executive Sedan	Executive Wagon	Berlina Sedan	Berlina Wagon	SS
Interior							
Child-seat anchor points.	●	●	●	●	●	●	●
Map pockets behind front seats.					●	●	
Knitted cloth seat trim.	●	●	●	●			
Cord seat trim.					●	●	
Wool/tweed mix seat trim.							●
Passenger grab handles.					●	●	●
Front door storage bins.							●
Arm rests — front and rear doors.	●	●	●	●	●	●	●
Centre console with arm rest.					●	●	●
'Child-proof' rear door locks.	●	●	●	●	●	●	●
Twin spoke steering wheel.	●	●	●	●	●	●	
HDT — Momo leather-bound steering wheel.							●
Dash panel "SS" identification.							●
Loop pile carpet.	●	●	●	●			●
Cut pile carpet.					●	●	
Illuminated locking glove box.	●	●	●	●	●	●	●
Vanity mirror in glove box.					●	●	
Prismatic rear view mirror.	●	●	●	●	●	●	●
AM/FM stereo radio/cassette.	●	●	●	●			
AM/FM stereo electronic tune radio/cassette.					●	●	●
Rear seat passenger lamps.					●	●	
Luggage compartment lamp.	●		●		●		●
Cargo area lamp.		●		●		●	
Illuminated cigarette lighter/ashtray.	●	●	●	●	●	●	●
Rear ashtrays.	●	●	●	●	●	●	●
High density sound insulation.	●	●	●	●	●	●	●
Instruments							
Analogue Instrumentation:	●	●	●	●	●	●	●
Quartz clock.	●	●	●	●	●	●	●
Temperature gauge.	●	●	●	●	●	●	●
Fuel gauge.	●	●	●	●	●	●	●
Oil pressure gauge.	●	●	●	●	●	●	●
Voltmeter.	●	●	●	●	●	●	●
Tachometer.					●	●	●
Vacuum economy gauge.	●	●	●	●			
Speedometer/Odometer/trip meter.	●	●	●	●	●	●	●
Warning lights — brake failure.	●	●	●	●	●	●	●
— alternator.	●	●	●	●	●	●	●
— parking brake.	●	●	●	●	●	●	●
— oil-pressure.	●	●	●	●	●	●	●
— E.S.T.	●	●	●	●	●	●	●

For optional equipment available see your Holden dealer.

Proudly Australian



Holden Commodore is much more than a world class family car, it is an Australian car, developed and built in this country for our unique conditions.

It is, like every Holden (and quite unlike many imported cars and locally assembled imports), designed to easily cope with Australia's amazing extremes of heat and cold, dust and humidity. A great car built to take everything from our pot-holed city streets and rugged outback tracks to handling the tyranny of distance in its stride.

We know Commodore can take it because we've proved it through a comprehensive, national drive program and by consistently winning Australia's great endurance motor races and reliability trials against all comers.

There is no better developed Australian car than Commodore, thanks to many thousands of hours of testing at our extensive Fishermen's Bend laboratory facility and millions of kilometres of painstaking development work throughout Australia and at the Holden Lang Lang proving ground – the largest and most comprehensive in the Southern Hemisphere and one of the toughest in the world.

Commodore's sleek, aerodynamic lines were born of wind tunnel testing, and its inner beauty lies in its engineering excellence.

Commodore's high quality and unparalleled strength of construction plus a corrosion protection package that's second to none gives you exceptional safety with durability. All with the unique standard of reliability that comes from almost 40 years of Holden dedication to building better, more enjoyable cars for Australia.

[†]Registered Trade Mark.

Holden Commodore gives you something that no other make of car can offer you – World Class Australian excellence.

Holden Ei. Injecting new excitement into driving.

World Class technology has been brought to Commodore, in the form of Holden's electronic fuel injection Ei engine, optional on Commodore SL, Executive and Berlina sedans and wagons.

Holden's new Ei is much more than just fuel injection tacked-on to an existing engine. Commodore's reliable 3.3 litre, 6-cylinder power-plant has been comprehensively re-developed to take full advantage of its superb, German designed "Bosch LE Jetronic"[†] electronic injection system.

The Bosch-Jetronic[†], arguably the best injection system in the world, is used by many of Europe's finest high-performance vehicle makers, like BMW (on both cars and motorbikes), Mercedes-Benz, Porsche and leading Grand Prix race teams.



Port fuel injection.

With Commodore's new 3.3 litre Ei engine comes advantages that no carburettored six can offer you, plus many outstanding features.

■ A massive 27% improvement in maximum engine power, a

*Results of GM-H laboratory tests compared to VH Commodore.

15% increase in available torque* and a wider "power-band" suited to automatic transmissions.

■ Virtually instant cold starting, usually within half a second of turning the ignition key, plus immediate full power availability, even on frosty mornings.

■ Excellent response and full acceleration with the engine hot or cold. ■ Less fuel used for cold starting, acceleration and closed-throttle deceleration. In fact, no fuel at all is consumed during deceleration when the engine is running at more than 1800 rpm.

■ Absolutely ideal, metered distribution to each cylinder of fuel and air, resulting in ultra-smooth power delivery. ■ An electronic engine management system which controls the Ei.

■ Better engine "breathing" from a new, low-restriction, 65mm throttle body, plus an inlet manifold designed to handle only air – not fuel (which is separately injected) for uncompromising performance. ■ Significantly better fuel economy – or outstanding fuel efficiency for the performance obtained, depending upon your driving style. ■ Rapid engine response to throttle movement due to instantaneous, pressurised fuel injection.

■ Computer controlled accuracy of fuel distribution, even under hard cornering, braking, hill-climbing and full throttle acceleration. ■ Manifold ram-

charging of air into the cylinders via speed-of-sound pressure pulses, a system computer developed by Holden, which provides a substantial increase in mid-range torque. ■ A re-designed, gas-flowed cylinder head with modified ports and reshaped inlet valves. This creates a smooth transition of fuel/air vapour for greater efficiency and performance.

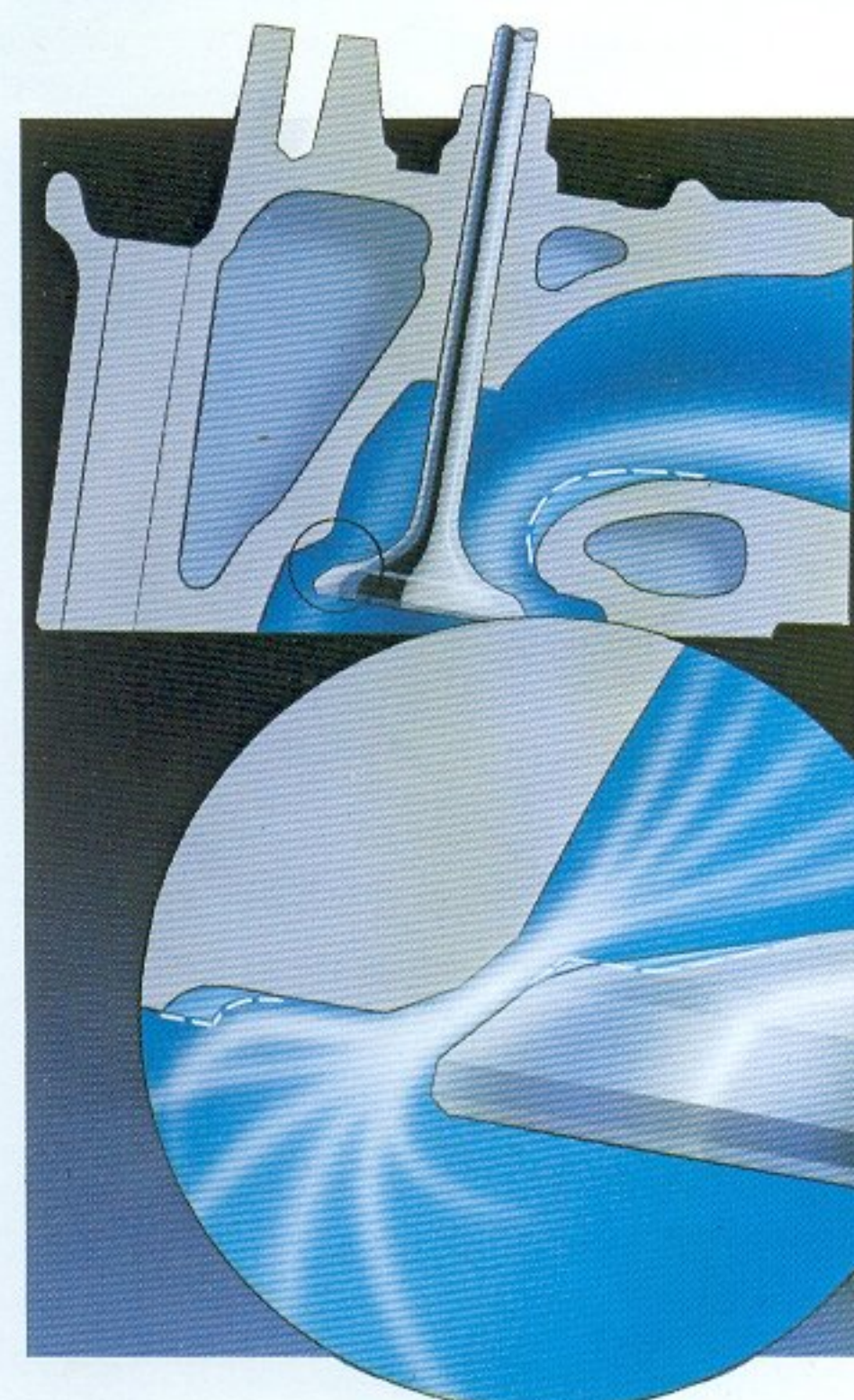
■ A computer-designed, high-lift camshaft which allows inlet



Manifold ram-charged pressure pulses boost torque.

valves to open wider and longer. This helps to obtain full benefit from manifold ram-charging into the combustion chambers as each piston returns to commence its firing stroke.

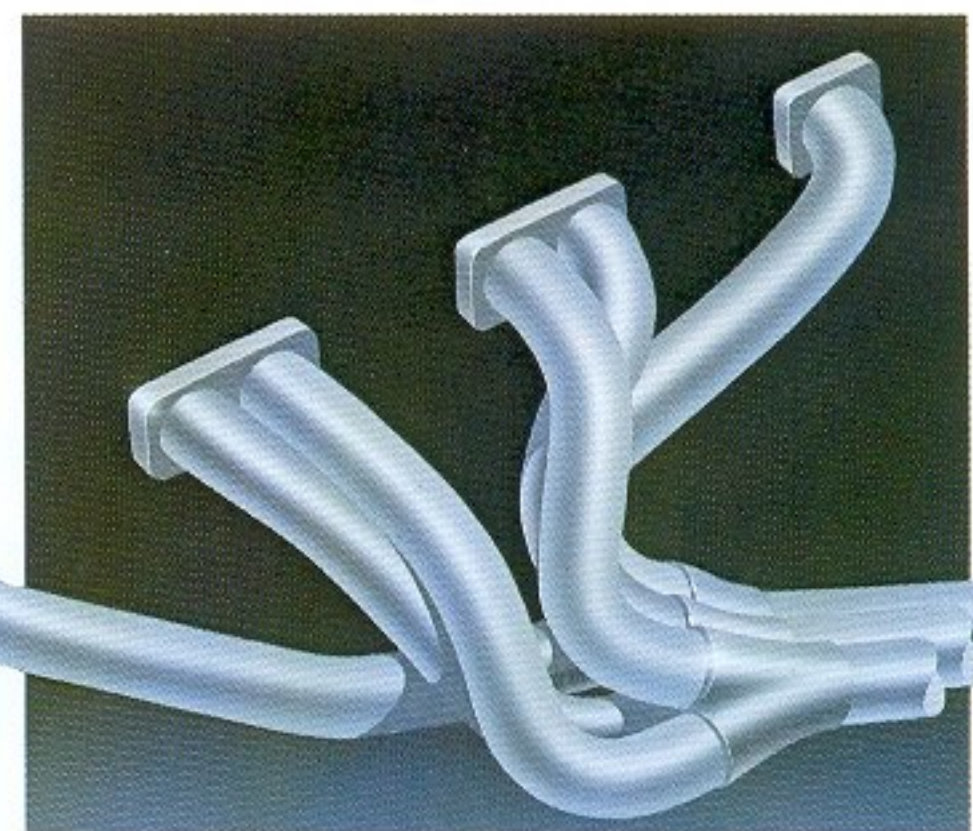
It also considerably improves inlet-gas swirl mixing, giving even fuel burning in the chamber, more power and lower emissions. ■ Hydraulic tappet adjustment for automatic zero-clearance under all engine conditions to make the engine run quieter and more reliably. No owner tappet-adjustment is required. ■ A new stainless steel exhaust extraction system. A world class, individually branched pipe system of the type used by exotic sports cars for more efficient exhaust gas flow.



Computer re-designed inlet valves.

This system offers outstanding life and excellent cooling to help reduce under-bonnet temperatures, a real advantage in Australia's hotter areas.

To suit Commodore Ei's great power, many drive-train components have been specially modified:



Stainless steel exhaust extraction system.

- The "Trimatic" automatic transmission is specially re-calibrated with new final drive ratios, for the optimum balance between performance and economy.
- Heavy-duty final drive universal joints are standard Ei equipment.
- So are shot-peened (surface toughened) differential pinion gears.

Commodore's Ei-6 is the most comprehensively developed and innovative 6-cylinder engine made in this country – a truly world class power source from Holden for Australia's world class cars.

The EST advantage

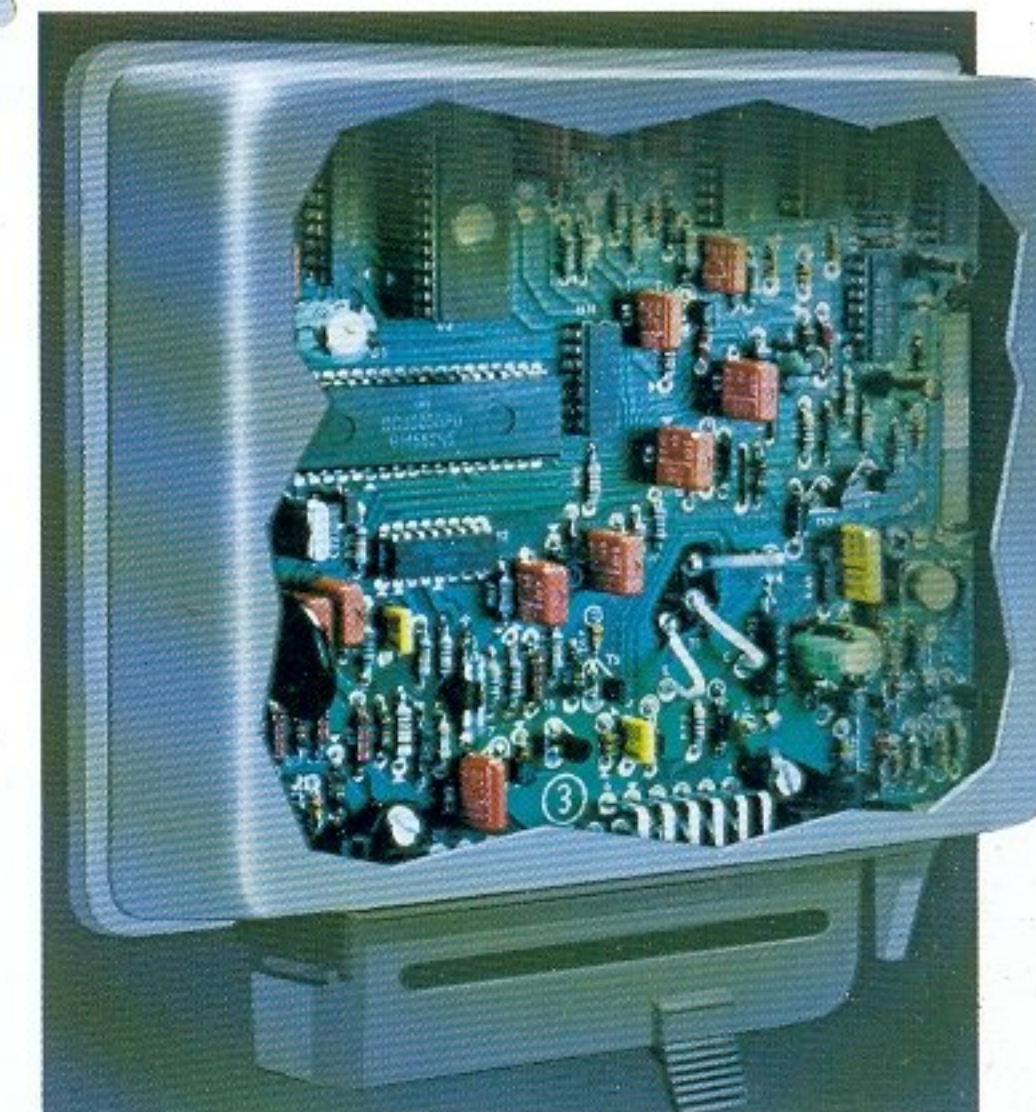
Electronic Spark Timing is a new and highly sophisticated, computerised engine management system, developed by the Holden team.

It has proven so successful, under rigorous testing throughout Australia, that it is now specified as standard equipment for Commodore SL, Executive and Berlina sedans and wagons.

GM-H laboratory tests have

shown that Commodore's EST helps provide up to a 15% improvement in fuel economy plus even better engine response and performance.

To achieve this, EST utilizes a variety of sensors linked to a central microcomputer which accurately determines crankshaft speed and position while evaluating several other engine operating parameters. These include: throttle position; engine coolant temperature; inlet-manifold vacuum; clutch rotation of an (optional) air-conditioning unit; plus engine speed and load data.



EST central microcomputer.

As the EST computer stores and analyses this stream of data, it automatically selects and adjusts primary coil current to achieve correct dwell and spark-timing settings. It performs this task for every firing sequence.

In other words, EST electronically times the engine perfectly while it is running.

This ensures the greatest possible energy is put to use in turning the crankshaft, rather than being dissipated as wasted engine heat.

The EST system is linked to Commodore's high energy ignition – an electronic system that eliminates the need for "points" which can foul and

wear. So EST is also virtually maintenance-free.

The EST microcomputer is so advanced it can even diagnose itself, to tell you when there is a problem. In the extremely unlikely event of a system fault an EST warning lamp will illuminate on the driver's instrument panel.

This warning lamp will provide a coded guide to fault location for your Holden Dealer's service technician for immediate diagnosis. However, even if a system fault occurs, your Commodore is protected by a "limp-home" back-up mode.

So EST reduces emissions and helps economy, starting and driveability under all conditions with one sophisticated and reliable package.

There's more to an EST engine than electronics. To complement the EST system, a number of other advanced features have been fitted:

- A new carburettor, for improved cold starting, rapid engine response and better performance along with dramatically improved economy, excellent high-ambient temperature operation and immediate hot engine re-starts.
- A new, high-mass electric choke for quicker warm-ups with the lowest possible engine speed. Reduces fuel wastage and helps extend engine life.
- An air injection pumping system which forces fresh air into the exhaust manifold (via the exhaust ports) to help in burning off emissions without detracting from engine performance.
- A new, back-pressure modulated, exhaust-gas recirculation system (on manual EST Commodores only) that provides excellent pollution control with minimal effect on driveability.

Together with EST, these features make the 1985 Holden

Commodore even better for fuel economy, the environment and your driving enjoyment.

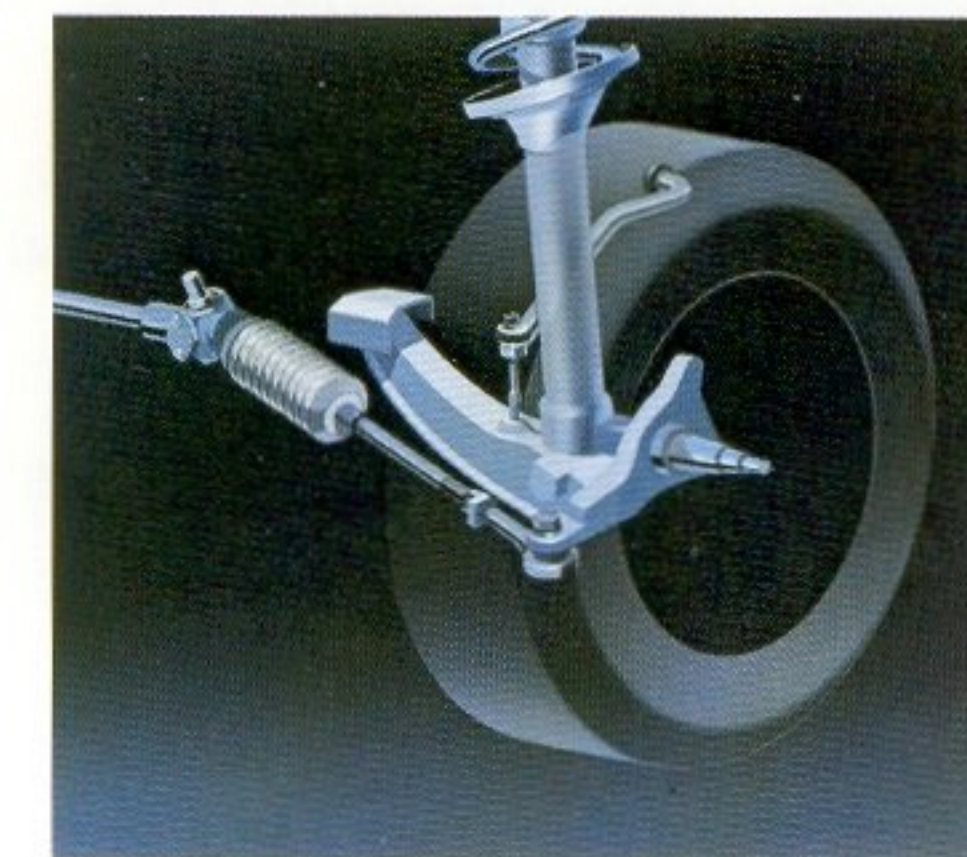
A world class suspension system.

Holden's objectives in designing Commodore's now renowned Radial Tuned Suspension system were to achieve handling the equal of many of Europe's finest cars, plus durability to survive the toughest of Australian roads.

The 1985 Commodore attains a new level of excellence with an even smoother, quieter ride quality that doesn't compromise handling sharpness and actually enhances road-holding.

This has been achieved by subtle re-valving changes in Commodore's suspension dampers.

A new type of valve has also been incorporated in each front strut for exceptional durability and a new front-lower control arm damping-bush helps reduce road surface vibrations and tyre noise transmission.



Revised Radial Tuned Suspension for improved ride.

Radial Tuned Suspension – the reason Holden Commodore can offer you great primary safety with world class comfort.

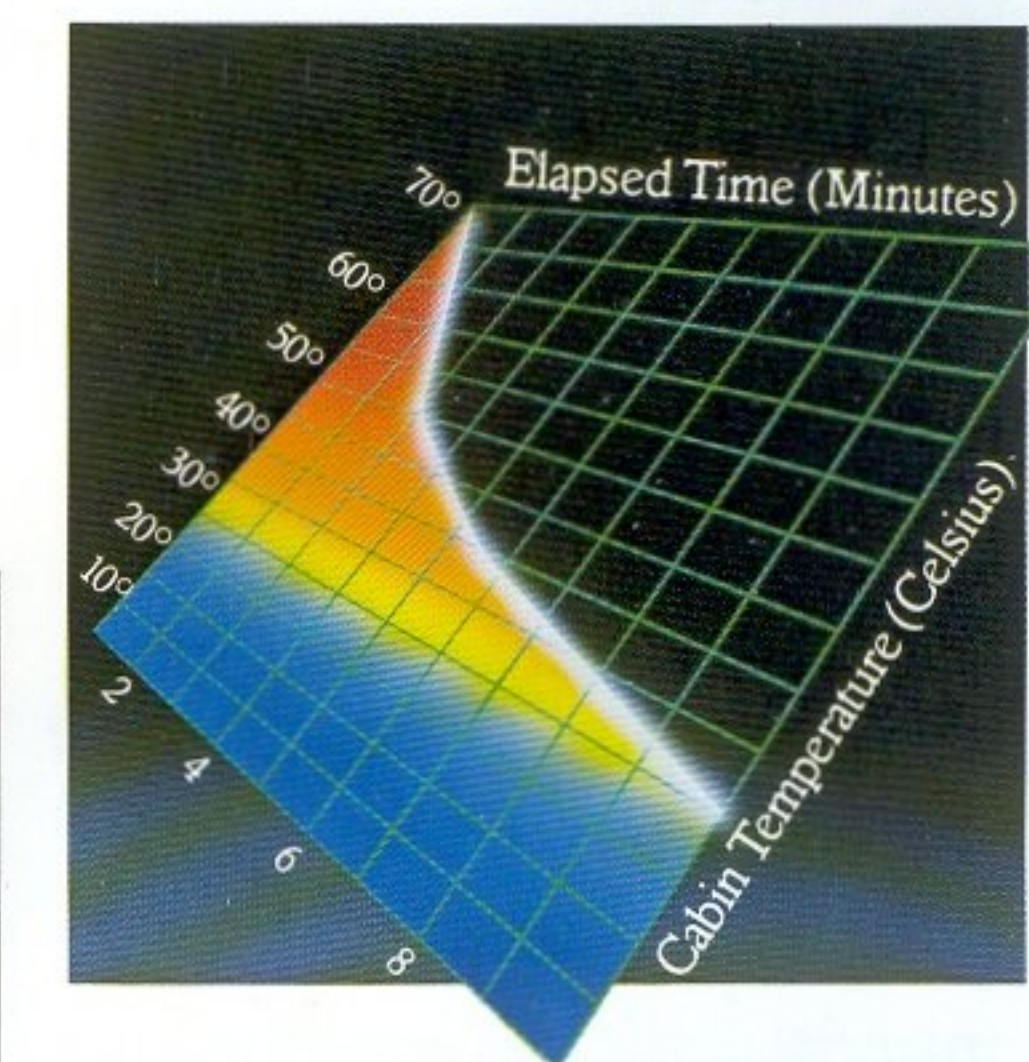
The 40% cooler change.

Commodore is built to cope with Australia's harshest climatic conditions but, unfortunately, such extremes are tough on people.

That's why Commodore's powerful, fan-boosted, 10 outlet ventilation system is designed to make the very best use of Holden's all-new integrated air-conditioning – optional on Commodore SL, Executive and Berlina sedans and wagons.

Commodore's air-conditioning has been developed for an amazing 40% improvement in cool-air flow over the air-conditioner on the previous Commodore model.

Here is a system that can "pull-down" cabin temperatures fast, from a searing 68° Celsius to a comfortable 25° in under 10 minutes. A system rated at a very high 1.5 tonnes – which means it could actually produce that much ice in 24 hours, under defined conditions.



Commodore's highly efficient air-conditioning can achieve outlet temperatures of around 7°C at a flow rate better than two complete cabin-volumes every minute, which makes for great comfort in extremely hot conditions.

This remarkable system is the product of the latest spiral compressor technology, which combines exceptional power, smoothness, reliability and quietness of operation to make Commodore's air-conditioning the most advanced one fitted to a family-sized Australian car.

Electronic touch controls.

Commodore also includes the most advanced switching system of any Australian car.

Ergonomically positioned, to the left of the driver's instrument cluster, is a row of ultra-low current switches. The simple touch of a finger is enough to actuate each switch, which then performs its individual function e.g.: radio aerial up/down, rear window demisting and the wagon's tailgate washer/wiper.

They offer excellent tactile response and eliminate the problem of switch-contact arcing, which can cause static interference to a vehicle's sound system.

Electronic touch controls; another great reason to switch to a Commodore.

Comprehensive body protection.

New advances in world plastics technology have been brought to Commodore in the form of an extensive impact protection system.

Ultra-tough and durable, injection-moulded polycarbonate front and rear bumpers provide a resilient barrier to even substantial low-speed knocks. This new material dissipates impact energy before it can reach Commodore's strong steel bodywork.

Polycarbonate body protection – another first in Australia for World Class Holden Commodore.

A world class driver's seat.

For absolute comfort you need a really well designed and upholstered driver's seat, the kind fitted to Holden Commodores.

This strong, steel framed seat has body-contoured foam cushioning. It also has the

comfort of cloth covering on SL and Executive, cord cloth on Berlina.



There is an extensive range of adjustments for fore and aft movement, recline and seat height.

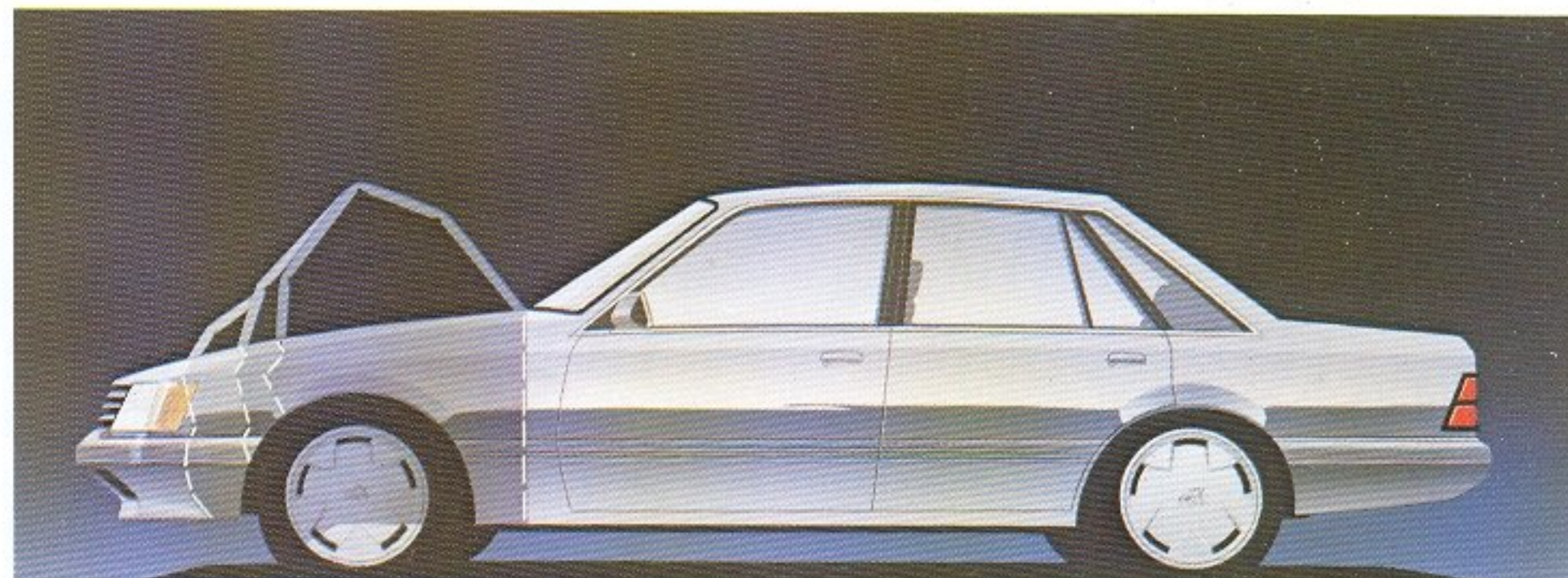
On Berlina, it even has a 3 position lumbar support.

And naturally it has a safety head-restraint, of a see through design, to give protection with improved all-round visibility.

Weatherproofed inside and out.

Zinc, plus primers, provides better protection against corrosion than primers alone, to virtually eliminate rusting from inside-out. So Holden Commodore uses zinc pre-coated steel for major panels.

During build, zinc-rich primer is sprayed onto localized areas. After assembly the body is zinc-phosphate treated, dipped into an epoxy primer, then sprayed with exterior primer.



Commodore's front body absorbs impact forces to improve passenger protection.

Also there's a coat of acrylic sealer, three coats of acrylic lacquer – finally an application of corrosion preventative wax.

Powerful protection for your world-class investment.

World Class Safety

Holden Commodore has built an enviable reputation as one of the world's safest cars.

In the 1985 Commodore, this tradition lives on.

Their exceptional primary safety (the ability to avoid accidents) comes from the fine handling of Radial Tuned Suspension, from responsive rack and pinion steering and from power assisted, dual circuit braking.

Great secondary safety (the ability to help occupants survive severe collisions) comes from amazing vehicle strength born of computer design, Australian built toughness and from seat belts for all occupants.

With progressive crumple impact deceleration, an energy absorbing steering column, steering wheel and dashboard padding, burst-resistant doorlocks with rear "child-proof" facilities, a laminated windscreen and much, much more – there is no safer car made today.

World Class Quietness.

The 1985 Holden Commodore now has a sound insulation package that's even

more efficient than the already excellent package on previous Commodores.

Highly effective sound deadening materials have been used extensively on the cabin side of the firewall and under the bonnet.

Noise sealing around the firewall has also been improved with the introduction of new sealing materials.

Not only does this new World Class insulation system cut engine and road noise to an absolute minimum, it also cuts weight by up to 18 kilograms overall, thanks to recently developed light-weight, high-efficiency materials.

Holden Commodore. Safety Features.

- Radial Tuned Suspension for responsive, predictable handling and excellent primary safety.
- Tubeless steel-belted radials on safety-rimmed wheels for vehicle stability in case of a puncture plus reduced likelihood of a blowout.
- Rack and pinion steering for precise control.
- Tinted-band laminated windscreen.
- Tandem brake cylinder with split hydraulic circuits. In the unlikely event that one circuit fails the other will still operate.
- Power boosted brakes for maximum response from minimal effort.
- Seat belts for five occupants.
- Energy absorbing steering column and steering wheel.
- Spring loaded knock-out type internal rear vision mirror mounting with shatter resistant mirror.
- Remote control external rear vision mirrors – glare reduced.
- Safety glass windows.
- Safety-padded instrument panel with glare-reduced instruments and controls.
- Recessed instruments and instrument panel controls.
- Sun visors – energy absorbing.

■ Flush fitting lift-up exterior door handles.

- "Child-proof" safety locks on rear doors.
- 2-jet electric windshield washer.
- 2-speed plus intermittent windshield wipers with glare reduced arms and blades (matt black).
- High intensity reversing lamps.
- Flow through ventilation.
- Fusible link in wiring harness.
- Fan assisted heater demister.
- Brake failure lamp.
- Front seat head restraints.
- Parking brake warning lamp.
- Hazard warning flasher.
- Child restraint anchorages for rear seat.
- Progressive crumple impact-deceleration zones, front and rear.
- Side door anti-intrusion reinforcements.
- High strength steel unitary construction.
- Quartz halogen headlamps.

Outback Pack.

Many Holden owners do extensive outback driving with their vehicles heavily laden with extra items like additional tyres, water, fuel, etc...

Recognising this, the Holden Team has developed a comprehensive Outback Pack, available through your Holden dealer at moderate extra cost for all new Commodores.

It offers a 13mm increase in ground clearance plus these heavy duty features:

- Front and rear springs.
- Front strut assembly.
- Sump guard.
- Gas-pressure rear shock absorbers (sedan)
- High-load rear shock absorbers (wagon).
- Air-cleaner.
- Rear stabilizer bar.

Ask your Holden dealer for all the details.

Optional Equipment.

Optional equipment to add even more convenience, comfort and performance to your Commodore is available at additional cost. This optional equipment is grouped into various Option-packs for each model. The availability and content of these Option-packs may change from time to time to reflect consumer demand. Please check with your Holden dealer for full details of content and pricing of Option-packs currently available.

SPECIFICATIONS FOR COMMODORE 6-CYLINDER SEDAN AND WAGON.

ENGINE	3.3 EST	3.3 Ei— OPTIONAL SL, BERLINA, EXECUTIVE.
	ELECTRONIC SPARK TIMING, 6-CYLINDER IN-LINE, OVERHEAD VALVE WITH HYDRAULIC TAPPET ADJUSTMENT PLUS HIGH ENERGY BREAKERLESS ELECTRONIC IGNITION AND AIR INJECTION.	ELECTRONIC INJECTION (FUEL INJECTED), 6-CYLINDER IN-LINE, OVERHEAD VALVE WITH HYDRAULIC TAPPET ADJUSTMENT PLUS MANIFOLD RAM-CHARGING AND HIGH ENERGY BREAKERLESS ELECTRONIC IGNITION.
BORE		92.1 MM
STROKE		82.5 MM
DISPLACEMENT		3.3 LITRES
COMPRESSION RATIO		8.8:1
POWER OUTPUT	86kW (DIN) @ 4200 RPM	106kW (DIN) @ 4400 RPM
TORQUE	232Nm (DIN) @ 2600 RPM	266 Nm (DIN) @ 3200 RPM
TRANSMISSION	4-SPEED MANUAL 3-SPEED AUTOMATIC	SL EXECUTIVE AND BERLINA
DRIVE		REAR, THROUGH SALISBURY TYPE DIFFERENTIAL.
REAR AXLE RATIO		3.23:1
RADIAL TUNED SUSPENSION	SEDAN: FRONT; MACPHERSON STRUT, COIL SPRINGS, WET SLEEVE SHOCK ABSORBERS, STABILIZER BAR. REAR; TRAILING ARM WITH 5-LINK LOCATION, PANHARD ROD, PROGRESSIVE RATE COIL SPRINGS, DOUBLE-ACTING SHOCK ABSORBERS AND STABILIZER BAR.	WAGON: FRONT; MACPHERSON STRUT, COIL SPRINGS, WET SLEEVE SHOCK ABSORBERS, STABILIZER BAR. REAR; TRAILING ARM WITH 5-LINK LOCATION, PANHARD ROD, PROGRESSIVE RATE COIL SPRINGS, AND DOUBLE-ACTING SHOCK ABSORBERS.
STEERING		RACK AND PINION (POWER ASSISTED ON EXECUTIVE AND BERLINA).
TURNING CIRCLE		10.2 METRES KERB TO KERB MANUAL 10.7 METRES KERB TO KERB, POWER.
BRAKES		POWER ASSISTED, DUAL CIRCUIT. FRONT DISC/REAR DRUM.
FUEL TANK CAPACITY	SEDAN: 63 LITRES.	WAGON: 68 LITRES.
FUEL ECONOMY	SEDAN AND WAGON: (SL) CITY CYCLE 13.0L/100 KM. HIGHWAY CYCLE 8.5L/100 KM. (EXECUTIVE AND BERLINA) CITY CYCLE 13.5L/100 KM. HIGHWAY CYCLE 9.5L/100 KM.	
FUEL CONSUMPTION FIGURES STATED ARE THE RESULTS OF GMH ADMINISTERED LABORATORY TESTS CONDUCTED ACCORDING TO AS 2077-1979 PROCEDURES "METHODS OF TEST FOR FUEL CONSUMPTION OF PASSENGER CARS AND THEIR DERIVATIVES." CITY AND HIGHWAY CYCLES.		
TOWING CAPACITY	SEDAN: 500 KG WITH STANDARD TOWBAR, 1200 KG WITH LOAD EQUALIZING TRAILER HITCH AND TOWBAR PACKAGE. 1590 KG WITH BODYSIDE BRACING PACKAGE, TRAILER BRAKES, HEAVY-DUTY TOWBAR AND EQUALIZER HITCH.	WAGON: 500 KG WITH STANDARD TOWBAR, 1200 KG WITH LOAD EQUALIZING TRAILER HITCH AND TOWBAR PACKAGE. 1590 KG WITH TRAILER BRAKES, HEAVY-DUTY TOWBAR AND EQUALIZER HITCH.
LUGGAGE CAPACITY	SEDAN: 398 LITRES.	WAGON: 2,152 LITRES (REAR SEAT FOLDED DOWN).
DIMENSIONS (MM)	SEDAN:	WAGON:
OVERALL LENGTH	4714	4717
WIDTH	1722	1722
HEIGHT	(SL AND EXECUTIVE) 1378, (BERLINA) 1373.	(SL AND EXECUTIVE) 1401, (BERLINA) 1465.
GROUND CLEARANCE (MM)	(SL AND EXECUTIVE) 144, (BERLINA) 143.	(SL AND EXECUTIVE) 142, (BERLINA) 141.
ESTIMATED KERB WEIGHTS (KG)	(SL) 1220, (EXECUTIVE) 1231, (BERLINA) 1265.	(SL) 1261, (EXECUTIVE) 1272, (BERLINA) 1303.
WHEELBASE (MM)		2668.
TRACK/FRONT AND REAR (MM)	SEDAN: 1451 AND 1416	WAGON: 1451 AND 1440
WHEELS AND TYRES	SEDAN: WHEELS (SL AND EXECUTIVE) 5.50JJx14 STEEL. (BERLINA) 6.00JJx14 STEEL. TYRES: (SL AND EXECUTIVE) BR 78 S 14/4-PLY RATING STEEL BELTED RADIALS. (BERLINA) CR 78 S 14/4-PLY RATING STEEL BELTED RADIALS.	WAGON: WHEELS (SL, EXECUTIVE AND BERLINA) 6.00JJx14 STEEL. TYRES: (SL, EXECUTIVE AND BERLINA) CR 78S 14/4-PLY RATING STEEL BELTED RADIALS.

SPECIFICATIONS. COMMODORE V8.

	V8— OPTIONAL SL, BERLINA.	SS V8
	OHV DESIGN WITH CROSSFLOW CYLINDER HEADS. ROCHESTER QUADRAJET CARBURETTOR. BREAKERLESS HIGH-ENERGY ELECTRONIC IGNITION SYSTEM.	HOLDEN V8, OVERHEAD VALVE DESIGN WITH HOLDEN DEALER TEAM HIGH PERFORMANCE CROSSFLOW CYLINDER HEADS. LARGER INLET AND EXHAUST VALVES, PLUS MACHINED COMBUSTION CHAMBERS. LIGHTENED FLYWHEEL. LOW RESTRICTION EXHAUST SYSTEM.
	101.6 MM	101.6 MM
	76.8 MM	76.8 MM
	4.979 LITRES	4.979 LITRES
	8.8:1	8.8:1
	126kW (DIN) @ 4400 RPM	177kW (GROSS) @ 4800 RPM
	361 Nm (DIN) @ 2800 RPM	419 Nm (GROSS) @ 3500 RPM
	V8/MANUAL AVAILABLE ON SL AND BERLINA. V8/AUTO AVAILABLE ON SL AND BERLINA.	HOLDEN M21 4-SPEED MANUAL FLOOR SHIFT. HEAVY DUTY CLUTCH PRESSURE PLATE DIAPHRAGM.
	REAR, THROUGH SALISBURY TYPE DIFFERENTIAL.	REAR, LIMITED SLIP DIFFERENTIAL.
	3.08:1	3.08:1
	SEDAN: FRONT; MACPHERSON STRUT, COIL SPRINGS, WET SLEEVE SHOCK ABSORBERS, STABILIZER BAR. REAR; TRAILING ARM WITH 5-LINK LOCATION, PANHARD ROD, PROGRESSIVE RATE COIL SPRINGS, DOUBLE-ACTING SHOCK ABSORBERS AND A STABILIZER BAR.	WAGON: FRONT; MACPHERSON STRUT, COIL SPRINGS, WET SLEEVE SHOCK ABSORBERS, STABILIZER BAR. REAR; TRAILING ARM WITH 5-LINK LOCATION, PANHARD ROD, PROGRESSIVE RATE COIL SPRINGS, AND DOUBLE-ACTING SHOCK ABSORBERS.
	RACK AND PINION (POWER ASSISTED.)	RACK AND PINION (POWER ASSISTED WITH VARIABLE ASSIST FEATURE). HDT - MOMO LEATHER-BOUND STEERING WHEEL.
	10.7 METRES KERB TO KERB, POWER.	10.7 METRES KERB TO KERB.
	POWER ASSISTED, DUAL CIRCUIT. FRONT AND REAR DISC	POWER ASSISTED 4-WHEEL DISC. HEAVY DUTY BRAKE MASTER CYLINDER.
	SEDAN: 63 LITRES.	WAGON: 68 LITRES
	SEDAN AND WAGON: (SL AND BERLINA) CITY CYCLE 19.0L/100 KM. HIGHWAY CYCLE 11.0L/100 KM.	63 LITRES.
	SEDAN: 500 KG WITH STANDARD TOWBAR, 1200 KG WITH LOAD EQUALIZING TRAILER HITCH AND TOWBAR PACKAGE. 1590 KG WITH BODYSIDE BRACING PACKAGE, TRAILER BRAKES, HEAVY-DUTY TOWBAR AND EQUALIZER HITCH.	WAGON: 500 KG WITH STANDARD TOWBAR, 1200 KG WITH LOAD EQUALIZING TRAILER HITCH AND TOWBAR PACKAGE. 1590 KG WITH TRAILER BRAKES, HEAVY-DUTY TOWBAR AND EQUALIZER HITCH.
	SEDAN: 398 LITRES.	WAGON: 2,152 LITRES (REAR SEAT FOLDED DOWN).
	SEDAN:	WAGON:
	4714	4717
	1722	1722
	(SL) 1378, (BERLINA) 1373.	(SL) 1401, (BERLINA) 1465.
	(SL) 144, (BERLINA) 143.	(SL) 142, (BERLINA) 141.
	(SL) 1220, 1231, (BERLINA) 1265.	(SL) 1261, 1272, (BERLINA) 1303.
		2668
	SEDAN: 1451 AND 1416	WAGON: 1451 AND 1440
	SEDAN: WHEELS (SL, BERLINA) 6.0JJx14 STEEL. TYRES (SL, BERLINA) CR 78S 14/4-PLY RATING STEEL BELTED RADIALS.	WHEELS HDT 7.00JJx15 ALLOY. TYRES UNIROYAL ER60H15.

Accessories for Australia's World Class Cars

When you buy from your Holden Dealer you can be sure of top quality accessories designed to personalize, protect and enhance your new

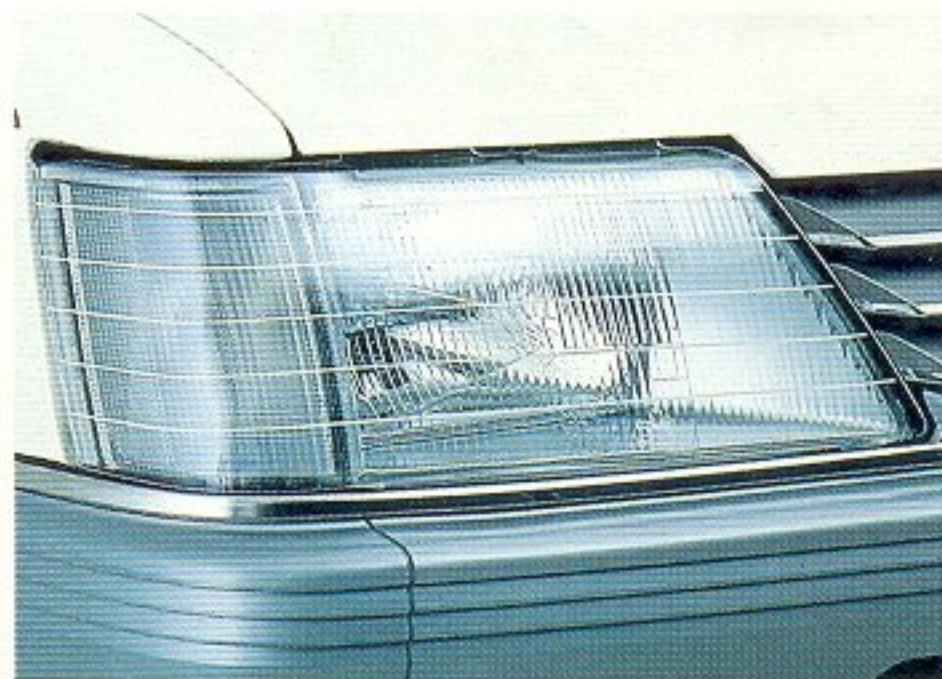
Commodore or Calais. And all GMH accessories are covered by the 12 months/20,000 km GMH Service Warranty.

Talk to your Holden

Dealer now about fitting GMH accessories for your Commodore or Calais and put your World Class Australian Car in a class of its own.



• Mud flaps



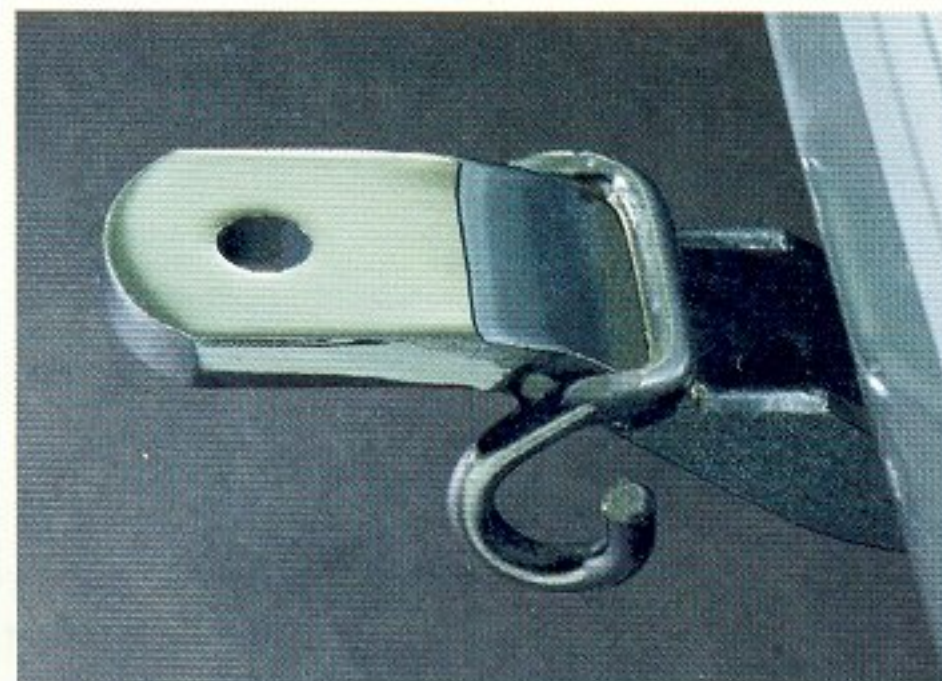
• Headlamp guards



• Sunshade and weathershield



• Roof rack, dust deflector and venetians, (wagon)



• Tow bar and tongue



• Air conditioning

GMH 12/20 WARRANTY.

Every Holden Commodore is covered by the GMH New Vehicle Warranty which covers your vehicle for the first 12 months or 20,000 kilometres, whichever occurs first.

A word about this catalogue. We have tried to make this catalogue as comprehensive and factual as possible. However, since the time of printing some of the information you'll find here may have been updated. Also, some of the equipment shown or described through this catalogue is available at extra cost. And the right is reserved to make changes at any time without notice, in prices, colours, materials, equipment, and models. Your Holden Dealer has details, and before ordering, you should ask him to bring you up to date.

No GMH Dealer or other person is authorised or permitted to give or make any statement assertion or undertaking in relation to the quality performance characteristics descriptions or fitness for any purpose of any GMH product which is at variance with any written statement assertion or undertaking on any of these subjects given or made by General Motors-Holden's Limited or General Motors-Holden's Sales Pty. Ltd. in its published sales literature, and neither company accepts any liability for any such unauthorised action. General Motors-Holden's Limited and General Motors-Holden's Sales Pty. Ltd. have franchised dealers in many parts of Australia for the sale of service parts and the provision of service to owners of GMH's products. Every endeavour is made to ensure that such dealers carry adequate stocks of service parts, but neither General Motors-Holden's Limited nor General Motors-Holden's Sales Pty. Ltd. makes any promise, other than that contained in the New Vehicle Warranty given by General Motors-Holden's Sales Pty. Ltd. that such parts or service facilities will be available at any specific location or at any particular time.

Copyright. General Motors-Holden's Sales Pty. Limited.