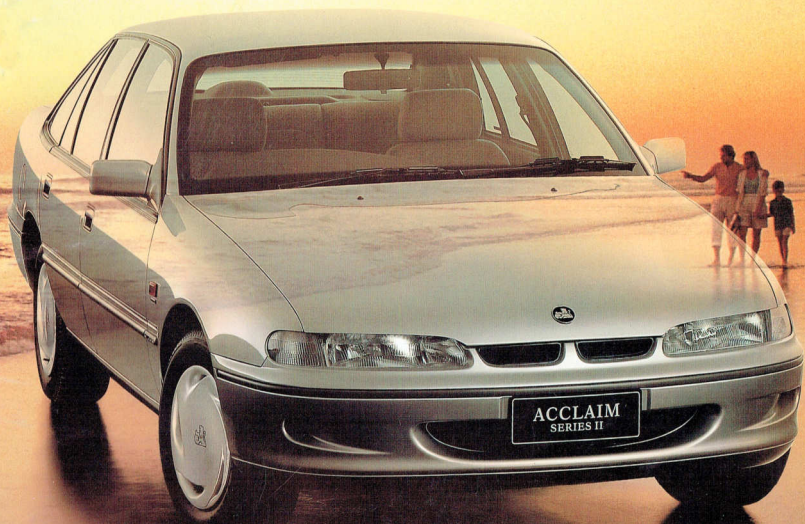
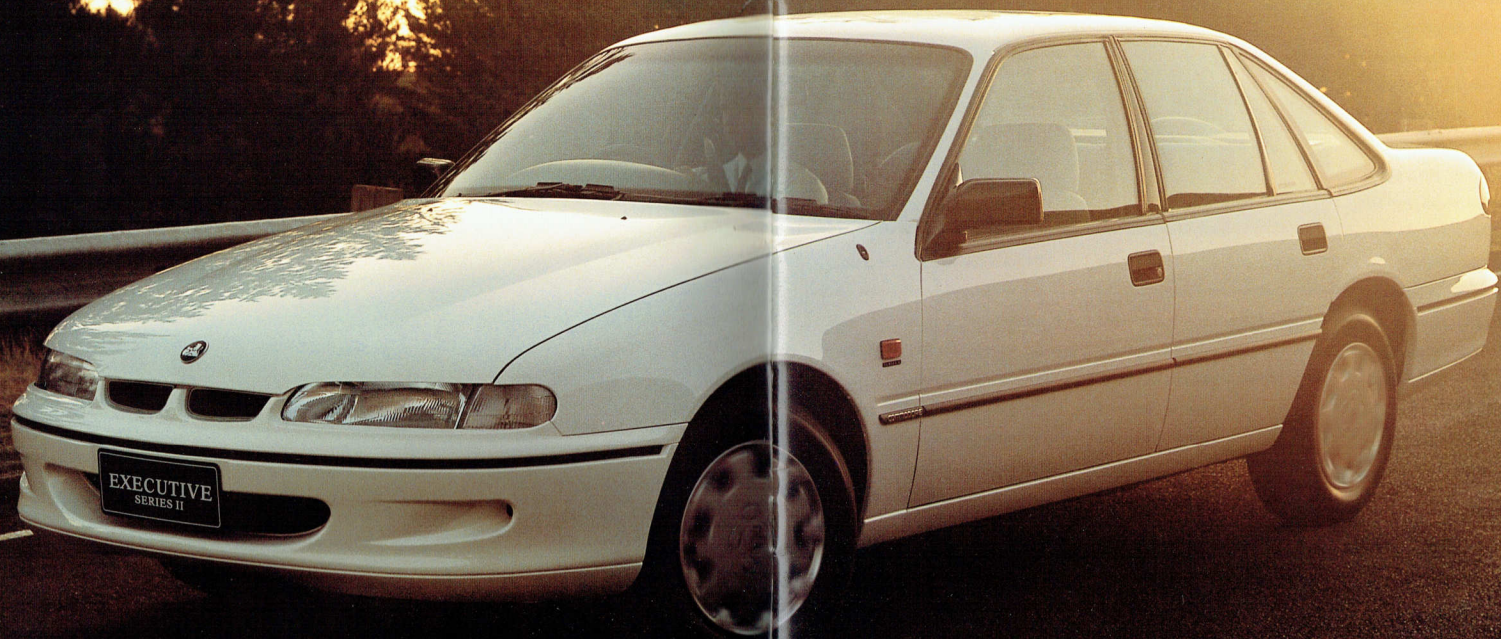


THE NEW HOLDEN COMMODORE SERIES II.  
EXECUTIVE, ACCLAIM, BERLINA, S AND SS.





THE NEW COMMODORE THAT WILL CONTINUE TO RESHAPE AUSTRALIAN MOTORING.

This is the Holden you've always wanted.

The new Commodore Series II.

It's obvious from just one look that Holden's huge investment in design and quality manufacturing has paid dividends.

With styling refinements this new, quieter Commodore has it all.

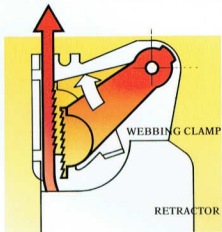
To help avoid an accident or survive one, Holden's Total Safety Systems (TSS) now incorporate over 60 safety and security features with the life saving technology of an airbag, a first for an Australian built family car.

New primary safety comes in the form of a speed alert warning system, a larger interior mirror for increased rear vision, and a convex left hand side exterior mirror that helps avoid any blind spot when changing traffic lanes, or reversing. And new twin jet windshield washers.

Feel secure with a combination of safety features never seen in an Australian built car before.

Admire the distinctive shape that reflects a classic, European style and feel the big V6 power.

Experience a standard of handling



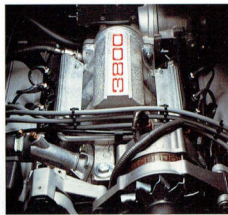
Seat belt webbing clamps standard on front seats.



that is offered by the availability of Independent Rear Suspension and Anti-lock Braking on Commodore.

A wide-track front suspension and new dual wall exhaust help reduce road and engine Noise Vibration Harshness (NVH) within the cabin, leaving a lot of big reputations struggling for breath as they attempt to catch up.

And relax with a sound system



Refined, quieter, powerful V6, that delivers 111/100km city and 71/100km highway economy. (AS2877 test.)

incorporating four six inch speakers, two in the front and two in the rear, for superb sound.

Complemented by stylish new trim in Executive and Acclaim.

The new Holden Commodore V6 Series II with its quieter dual wall exhaust continues to perform with over two-tonne towing capacity, outstanding fuel economy and low running costs.



The new speed alert system gives visual and audible warning if the car exceeds your pre-set speed limits. Also, new lamp and chime warning highlights low fuel and car moving with handbrake on.

The Federal Government's 1994-95 Fuel Consumption Guide shows that the manual V6 Holden Commodore Executive and S have the best AS2877 fuel economy of any passenger car on sale in Australia over 3.0 litres engine capacity. A lower fuel consumption also means a lower level of exhaust emissions, another high priority at Holden and



One of the world's most sophisticated security systems, conveniently located in the key, no longer making it a two piece security system.

something General Motors has pioneered. For example, Holden's catalytic converter has reduced hydrocarbons and carbon monoxide exhaust emissions by over 90%.

It goes without saying the new Holden Commodore Series II is a very tempting value packed choice, with 15" wheels, door deadlocks, auto headlamps off and the availability



Wider, rear view mirror that gives you increased, safer vision.

of electronic 4-speed automatic transmission with power/economy mode control.

And fortunately it has one of the most advanced security systems available anywhere in the world, that conveniently locates your own personal computer code within the key. Press the button on top of the Power Key and the code is transmitted. This code, which changes constantly, tells the central co-ordinating body computer to unlock the doors, which in turn, tells the engine control module to enable the ignition to operate.

While so much has changed, you'll appreciate some things haven't.

Holden Commodore's reputation for reliability, dependability and toughness goes on and on and on.

As does the biggest range of Commodore family sedans and wagons, with the availability of our own legendary Holden 5 litre V8.

So don't wait any longer, because how much longer can a family car continue to offer so much.

## SERIES II



A rear centre lap sash seat belt is standard in the sedan.

THE SAFEST AUSTRALIAN FAMILY CAR EVER.



At Holden, safety has never been relegated to second or third place.

It's very much safety first.

And no Holden Commodore demonstrates that commitment and focus more than the new Holden Commodore Acclaim Series II.

In fact, the Commodore Acclaim Series II is the safest Australian family car ever, with airbag, Anti-lock Braking (ABS), Independent Rear Suspension (IRS), electronic 4-speed automatic transmission and Cruise Control all standard.

With its 3.8 litre V6 and low running costs the new Acclaim also proves it's not necessary to sacrifice power and economy for safety.

Of course, the key to safe motoring is avoiding an accident.

That doesn't mean never venturing out onto the road.

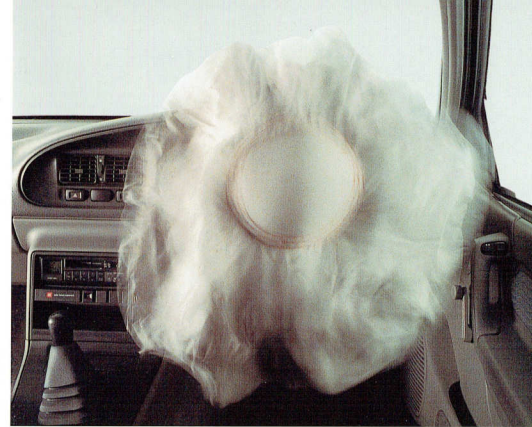
It means driving a car that's equipped with features to keep you out of harm's way.

## SERIES II

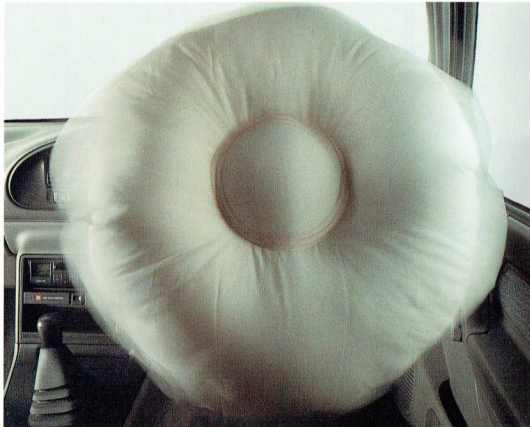
And in 99% of cases, that's the critical issue, which is where the combination of Anti-lock Braking and Independent Rear Suspension



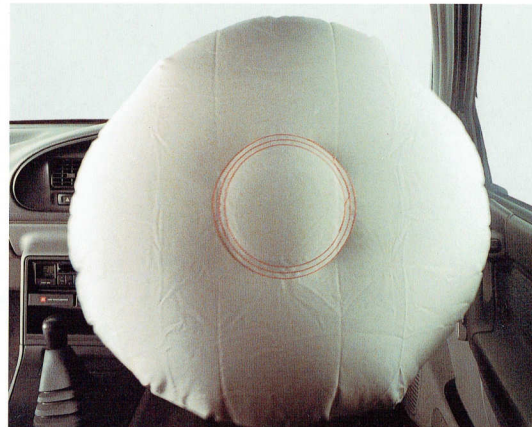
A. The airbag is triggered by a crash sensor, which is a self-contained, electronic sensing, microprocessor-controlled system.



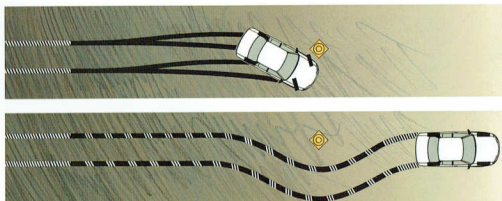
B. 25 Milliseconds. Burst out occurs. The airbag, housed in the centre of the steering wheel, splits its covering pad in predetermined places and inflates rapidly.



C. 35 Milliseconds. As the airbag inflates the unique tethers ensure correct positioning.



D. 45 Milliseconds. The airbag is fully inflated and waiting for the driver who has moved less than 50mm in the seat. Total preparation time is less than an eye blink.



Anti-lock Braking (ABS) assists the driver (bottom track) in an emergency situation by maintaining steering control, even under full braking.

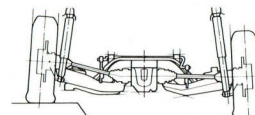
is so effective. In an emergency braking situation, the ABS helps you retain full steering control, so the car goes where you point it, even in adverse conditions.

While the IRS gives greater rear wheel traction, helping the vehicle to stay in contact with the road surface.

Remember, a few metres can

be the difference between a serious accident and one that never happens.

However, the reality is, some



Independent Rear Suspension (IRS) irons out corrugations, ensuring better traction.

accidents are simply unavoidable.

To keep you firmly in place, all Commodores incorporate front seat belt webbing clamps as standard, and in the sedans, a centre lap sash seat belt in the rear.

And for the first time in an Australian built family car, the life saving technology of Holden's

uniquely designed airbag is standard in the Acclaim.

Not an airbag designed for Americans, and not a European "face bag". But an airbag Holden has spent time and money perfecting for Australians. Part of that time has involved testing at Holden's Lang Lang safety test facilities, the best equipped in Australia.

Commodore uses the latest collision-sensing technology in its control module - technology shared only with Mercedes Benz. It distinguishes better between minor and serious accidents. The airbag is designed not to be triggered in a minor collision. But it certainly will in a frontal impact which puts your safety at risk.

Other safety features that make up Holden's Total Safety Systems, over 60 of them, include a safety cage that provides maximum protection during collisions and rollover accidents.



So when it comes to protecting Australians and their families, the development of the new Commodore Acclaim Series II has been no accident.



Smooth, electronic 4-speed automatic transmission is standard on Acclaim.

## THE FINAL CONQUEST OF SPACE.



Australia has a vast interior and so does the new Holden Commodore Series II.

The Commodore's expansive interior dimensions allow you to sit down and really stretch out, so long distances can be consumed effortlessly, with the minimum of fatigue.

While passengers are accommodated generously, drivers are spoilt

with the smooth, flowing lines of the wrap around dash, giving improved ventilation and an instrument panel that caters to almost every need.

Everyone may be talking about ergonomics and function, but the Holden Commodore Series II provides a brilliant, practical demonstration with a steering column that adjusts for height and reach.

Not just an ordinary adjustment that tilts at the head of the column, but one that tilts from a point at floor level, so that the steering wheel is maintained at a similar angle to the driver.

The new Holden Commodore Series II also includes a vertical seat adjustment and lumbar support for total driver comfort.

Nothing has been overlooked in the interior design of the Commodore. Everything is at your fingertips with a functional instrument panel.

Most switches are conveniently located on stalks, either side of the steering column.

For example, all wiper control functions for front and rear wipers, including intermittent, are located in

a single stalk on the left hand side.

While the Cruise Control switches are on the end of the turn signal stalk.

So your eyes don't have to leave the road and search for switches, all lamp controls, headlamp, park and dome are nestled together on the dash fascia.

It's also comforting to know the front seat cushions provide excellent

support with body hugging contours.

Finally, the stylish look of the interior is complemented by the sporty four spoke steering wheel available with airbag and a three spoke wheel, standard on Executive and Berlina.

The new Holden Commodore Series II. With so much space, it's light years ahead.



A security system designed to baffle and deter even the most determined thief.



The driver and front seat passenger in the Acclaim, Berlina, S and SS enjoy lumbar support that's adjustable for maximum comfort, ideal on longer trips.



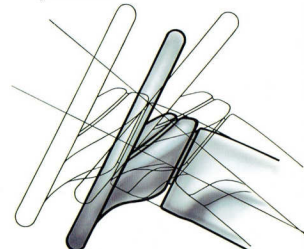
Electronics have created a revolution in transmission technology. In power mode, the driver has later upshifts for more engine power.



Instant relief from extreme heat from a powerful air conditioning system.



Convex left hand side rear vision mirror helps avoid any blind spots when changing lanes or reversing.



A steering column adjustable for height and reach allows every driver to find the perfect driving position.

DON'T DRIVE PAST THESE LITTLE LUXURIES.



For a little extra you can enjoy a lot of extra luxuries in a new Holden Commodore Berlina Series II.

They're immediately obvious, from the inviting, rich velour seat trim, to the superb sound system with a CD input jack that provides sound definition every music lover will applaud.

First impressions are enhanced by the stylish, big alloy wheels and

subtle bodyside mouldings. The level of sophistication continues the moment you enter the car and are welcomed by beautifully contoured seats, designed for long distances only Australians can appreciate.

Once you're comfortable, which will just take a second or two, you'll have time to admire the sweeping interior and superb

appointments that make driving the new Holden Commodore Berlina Series II a pleasure.

Like the Climate Control system which won't lose its cool unlike some Europeans, trying to cope with the extremes of the Australian climate.

It's also refreshing to know the Climate Control system doesn't rely on ozone depleting CFC gases.

Other creature comforts that

put the Berlina in a class of its own include Cruise Control, conveniently located at your fingertips, power windows front and rear, a power antenna, standard electronic 4-speed automatic transmission, a comprehensive trip computer and alarm.

Each key, which has the power of a small microprocessor, is programmed with the owner's personal computer security/alarm

code. The central body computer is not only security conscious, it's thoughtful.

For example, the moment the remote key unlocks the car doors the interior light comes on, perfect where there's no street light.

If you don't deserve the luxury of a new Holden Commodore Berlina Series II, who does?



The luxurious interior is enhanced with rich, velour seat trim.



Comprehensive trip computer calculates everything from average speed to distance to empty.



Set the Cruise Control, sit back and enjoy the open road. (On automatic transmissions only)



Power windows for both driver and passengers.



For summer or winter comfort, one of the country's most effective and environmentally friendly Climate Control systems with twin rear ducts as standard.

## SERIES II

If you want show and go, don't go past the Holden Commodore S Series II.

With its powerful V6 engine and

And when you do ask the engine to deliver, you'll appreciate the compression ratio, of 9:1, which translates into a real lift in power.

All this, and still one of the best engine warranties in the country.

suspension and sporty alloy wheels.

Inside there's a tachometer to keep in touch with your V6 and electronic Cruise Control, standard on the automatic for when you're humming along the open road.

From the front, the Commodore SS Series II looks like it means business with a bumper that extends down to create an air dam.

While the leading edges of the grille are distinctive 'fast' red.



*The hot looks aren't restricted to the outside. Inside the SS is all style, with its sports trim.*



### FOR THOSE WHO ENJOY POWER.

five speed gear box, hardly anyone else will go past you on the road.

Put the big V6 through its paces. It's not only gutsy, it's tougher than ever with stronger conrods, which were actually developed by General Motors for a supercharged engine in the U.S.A., so it's built to last.



*A big six with high torque for rapid acceleration, yet slow engine speeds while cruising.*

To match its impressive performance, power discs are fitted all round that'll cope with just about any emergency.

But since the Holden Commodore S Series II is a car you really want to straighten corners with, it's fitted with Holden's FE2 sports



*A choice in SS of two big V8's that literally cut up the kilometres, while delivering heaps of grunt.*

You'll hum to the high fidelity sound system and enjoy thoughtful touches like the new passenger vanity mirror.

On the outside, the red grille inserts will turn heads as will the red bodyside mouldings. If you want a real position of power, get behind the wheel of a Holden Commodore SS Series II.

SS doesn't mean Standing Still.

Holden's racing heritage is written all over it. And that's not just the special graphics on the side of this sports saloon. It starts at ground level, with its own individual 5 spoke, turbine style, 7" wide alloy wheels, matched with high performance rubber.



### AND THOSE WHO LIKE TO FLAUNT IT.

Nestled in the air dam are a stylish pair of fog lamps.

But to really get down to business, lift the bonnet and admire the formidable V8 engine.

The 165kW V8 demands respect, while the 185kW option delivers all the extra grunt you're likely to need, especially when towing.

As you would expect from a quality saloon with such enhanced performance, Anti-lock Braking and Independent Rear Suspension are standard on the Commodore SS Series II. Which means the wheels stay in constant contact with the road, so all the power gets to the

ground. A fact that will leave a lot of big European reputations struggling to keep up.

The SS also gets its share of good looks with a rear body colour decor panel and a wing spoiler that looks like you're flying when you're idling.

Inside, the deeply contoured front seats which now include lumbar adjustment, provide all the necessary support even on the tightest hairpin corner, and extra comfort on long trips.

And in a car created for drivers, passengers are also looked after with serious amounts of leg room.

There's also the availability of a

driver's side airbag on both the S and SS models. What final point needs to be made about the exciting and stylish Holden Commodore SS Series II?

Only that, point to point, it takes an awful lot of beating.



*Unique sports alloys are standard on the SS.*



## A SECURITY SYSTEM THAT LEADS THE WORLD.

Designed and developed by Holden, Commodore's security system will challenge the best car thieves. Even Europeans are enquiring after the Holden one piece Power Key system, because the technology it contains leads the world.

For starters, the radio remote door lock/unlock control is contained in the head of the ignition key, which is more convenient than a two piece security system, and is powered



by a 5 year lithium battery. And the system is waterproof.

Each owner has their electronic code. But the key does not stay with the code it is given on day one.

Each time the power key is used the code changes. So if a waiting thief records a code and re-transmits it when you are away, it's already out of date and fails.

The code unlocks the power door locks, turns on the interior lighting,

activates the ignition circuits, mobilises the car and disarms the alarm where standard. All before you reach for the door handle.

The Commodore also memorises the last code, so if the car has a flat battery, the anti-theft unit never forgets that code.

And thanks to the coded communication between the ignition key and the engine control module, hot wiring is just an unpleasant memory.



## SMART FINANCE OPTIONS.

Among Commodore's many luxuries is a new and very smart one. The luxury of choice with finance as well. Now you can choose smart, factory-backed finance that can be tailored exactly to your needs. For example, Holden's SMARTDRIVE Lease Plan from General Motors Acceptance Corporation A.R.B.N. 007 480 382 offers approved buyers a smart way to save money. With SMARTDRIVE you only pay for the years that you drive your new

Commodore Series II instead of being obliged to pay for the whole vehicle. There's no deposit, payments are less during the term and a maintenance option is available. Ownership remains with GMAC at all times. When you return your Commodore Series II, to your Holden Dealer at the end of the lease term you have no obligations, other than excess charges that may apply. With SMARTBUY, approved buyers can enjoy flexible payment terms tailored to meet your needs.



At the end of your SMARTBUY contract you have three choices. You can pay out your final balloon payment, re-finance this amount (subject to credit approval at the time and the current terms and conditions) or simply return your Commodore Series II to GMAC, via your Holden Dealer, with a disposal fee of \$350, plus excess charges which may apply.

Your Holden Dealer has all the details.

## SMART FUEL OPTIONS.

Yet another option. The option of running your new Commodore Series II on LPG gas and saving over 45% on your fuel bill\*. Holden's LPG system is factory developed, tested and guaranteed, so your Commodore stays genuine. All warranties remain including

Holden's superior Powertrain Warranty of 3 years or 100,000 kms. The expert view is you're getting the best LPG technology in the world. When you flick from petrol to LPG, it's almost impossible to notice a difference in performance. The high quality installation means the LPG

system is fully integrated into your new Commodore Series II and does not affect Holden's world class anti-theft system. Reliability, durability and safety are assured with features such as steel fuel lines, upgraded rear suspension and a specially designed LPG tank.

## SOME OF THE BEST WARRANTIES IN THE COUNTRY.



### 2 Year or 50,000km New Vehicle Warranty.

Like all Holden's passenger and commercial vehicles, every Holden Commodore Series II is now covered by a 2 Year or 50,000km Warranty whichever comes first. So peace of mind is now standard with every new Holden Commodore Series II.

### 3 Year or 100,000km Powertrain Warranty.

To give you even more protection and added security, your new Commodore Series II will also be covered by a 3 Year or 100,000km (whichever comes first) Powertrain Warranty on the engine, transmission, clutch, axles and safety restraints.

### 3 Year/24 Hour Holdenwise Roadside Service.

Holdenwise Roadside Service covers you in your driveway or on the road, as far as you can drive, all day, all night, on weekends, in fact, the whole year through.

You are covered for 3 years complimentary service, so in case of an emergency, you simply phone our central Holdenwise 24 hour toll free number 008 817 100.

It's all part of Holden's commitment to offering you the best motor vehicles and customer care in Australia.



Many other fleet companies have the use or support of a dealer network. But Holden Dealers have put their money where their mouth is by investing in their own fleet leasing company.

By dealing direct, Holden National Leasing is best placed to offer the most flexible fleet financing deals available for new Commodore Series II and other Holden products.

HNL can even build a new Commodore Series II to your specifications (to approved fleets only).

What's more, your fleet can be delivered through any one of over 350 Holden dealerships nationwide.

Unlike other fleet companies, you get to choose.

Most importantly, wherever you do choose to go, all service and maintenance work is charged to HNL at pre-negotiated rates.

They would gladly welcome a chance to submit a proposition for your consideration.

So if you'd like to deal direct and cut out the middleman, consult your Holden Dealer or contact Holden National Leasing toll free on 008 226 772.



Factory backed finance from General Motors Acceptance Corporation can be tailored to suit the individual needs of the buyer.



At HSV, through various aesthetic and engineering modifications, Commodore's world class design is enhanced to build some rather special vehicles, as their name suggests.

It's an organisation dedicated to producing, in very limited numbers, a range of Holdens with an indelible sporting character.



When it comes to properly maintaining your Holden, you have the technical expertise and convenience of HoldenWise service at your nearest Holden Dealer.

So when it comes to servicing your new Commodore Series II, it pays to be HoldenWise.

At participating Holden Dealers, they offer the assurance of dealer fixed prices on scheduled services, so you can plan your routine maintenance costs.

And with extensively trained technicians they stand behind their workmanship with a 6 month/10,000km Warranty.

Naturally when fitted by a dealer, there's also a Holden Parts Warranty of 2 years or 50,000km.

With HoldenWise, you're always in safe hands.



## COMMODORE SERIES II. THE PERFECT FINISH.

The new Commodore's bold, smooth-flowing styling reflects ever increasing quality with a special high gloss enamel finish, the equal of any car in the world.

The technology of Holden's \$150 million paint system



ALASKAN



STRATOS



DIABLO



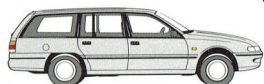
TORQUAY



SATIN



GENESIS



SILVER

This colour chart illustrates the exterior colours. As these are printed colours and not actual paint samples, variations between those illustrated and actual paint colours may occur. See your local Holden Dealer for colour and trim combinations.

## PERSONALISE YOUR COMMODORE SERIES II WITH HOLDEN ACCESSORIES.

No other Australian built car says so much about you as the new Holden Commodore Series II. It says you have style, a concern for safe motoring and a desire for real space and comfort. But if you really want to stamp your personality on a new Commodore Series II, consider the great range of Holden Accessories.

No matter which accessory you choose, it will reflect your individual flair and driving needs. It will also reflect your desire for quality. Each accessory has been developed to complement your new VR Commodore Series II and is manufactured to the highest engineering standards. And each is covered by Holden's 2 Year or 50,000km Dealer Fitted Parts and Accessories Warranty.

What's more, they meet stringent Australian Design Rule standards, which is particularly important with towing accessories.

So, arrange for accessories to be fitted as part of your personalised Commodore package.

includes automatic application that ensures consistent depth and finish. A polyester basecoat and acrylic clear coat make the new Commodore Series II gleam with an extraordinary lustre and sheer depth of colour.



KIRA



SHERBROOKE



MASAI



DARK AMETHYST



Holden Tow Bars specifically for Commodore have towing capacities up to 2100kg.



Hood and headlamp guards prevent stone chips and stop headlamp damage.



Venetian shades for sedan or wagon to reduce glare and heat.



Front and rear styled mudflaps protect paintwork and reduce spray to following vehicles.



Weathershield for driver or passenger door keeps rain out and reduces wind in the cabin.



"Plus 2" seat for kids up to 8 years.

## COMMODORE SERIES II SPECIFICATIONS

	V6	V8	185kW V8
Engine:	"V" configuration, OHV design with cross flow cylinder heads. Multipoint, grouped fuel injection. Engine Control Module, or Powertrain Control Module (with auto trans). Computer diagnostics. 91 octane fuel.		
	Low friction technology. High energy distributorless, ignition fired by magnetic pulse from crankshaft, via computer. Triple coils. Electric cooling fan.	Breakerless high energy electronic ignition system.	Large air intake. High flow air cleaner. Extractor, and low-restriction dual exhaust. Recalibrated engine management. Knock sensor.
Bore x Stroke (mm):	97 x 86	102 x 77	
Capacity (cm <sup>3</sup> ):	3791	4987	
Compression Ratio:	9.0:1	8.4:1	
Power Din (kW):	130@4800 rpm	165@4400	185@4600
Torque Din (Nm):	295@3200 rpm	385@3600	400@3800
Transmission Ratios:	5-Speed Manual: First: 3.25 Second: 1.99 Third: 1.29 Fourth: 1.00 Fifth: 0.72	First: 2.95 Second: 1.94 Third: 1.34 Fourth: 1.00 Fifth: 0.73	
4-Speed auto:	First: 3.06	Second: 1.63	Third: 1.00
Fourth: 0.70			
Drive:	Rear. Ratio 3.08:1		
Fuel Economy (Litres/100km AS2877 test) <sup>1</sup>	Executive Sedan & Wagon. 5-Speed manual: City cycle: 11.0 (26mpg) Hwy cycle: 7.0 (40mpg) 4-Speed auto: City cycle: 12.0 (24mpg) Hwy cycle: 7.6 (37mpg)	Executive Sedan & Wagon. 5-Speed manual: City cycle: 14.0 (20mpg) Hwy cycle: 8.5 (33mpg) 4-Speed auto: City cycle: 15.0 (19mpg) Hwy cycle sed: 9.0 (31mpg) Hwy cycle wag: 9.5 (30mpg)	
Fuel tank Capacity (litres)	Sedan: 63 Wagon: 68	Sedan: 80 Wagon: 68	
Brakes:	Four wheel disc. Ventilated front disc & finned caliper. Anti-lock Braking System (ABS) (Avail: see feature list). When wheel speed sensors & computer detect imminent lock-up, brake cylinder pressure is adjusted front & rear to prevent braking skid.		

	V6	V8	185kW V8
Suspension:	5-link suspension: Front: MacPherson Strut, incorporating wear sleeve shock absorbers. Direct acting stabiliser bar. Progressive rate coil springs. Rear: Trailing arm with 5-link location. Panhard rod. Progressive rate coil springs. Double acting shock absorbers. Stabiliser bar. Country Pack: (Avail: 5-link, excluding Sports sup.) Front: Revised spring & shock absorber rate. Revised stabiliser bar diameter. Increased ground clearance. Engine sump guard. Rear: Revised spring rate. Larger shock absorbers. Revised stabiliser bar diameter. Increased ground clearance. Fuel tank guard on sedan. Independent Rear Suspension (IRS), sedan: (Avail: see feature list). Independent, semi-trailing arm. Progressive rate miniblock coil springs. Double-acting shock absorbers. Stabiliser bar. Sports Suspension: (Avail: 5-link or IRS, excluding Country Pack. See feature list). Front: Firmer spring rate. Revised stabiliser bar diameter. Reduced ride height. Rear: Firmer spring rate. Revised stabiliser bar diameter. Gas pressure shock absorbers. Fuel tank guard on sedan.		
Steering:	Variable ratio rack & pinion. Power assisted with variable assist.		
Track (mm)	Sedan: Front & Rear: 1491 Wagon: Front/Rear: 1491/1478		
Turn Circle (kerb/kerb, m)	Sedan: 11.0 Wagon: 11.1		
Wheelbase (mm)	Sedan: 2731 Wagon: 2822		
Wheels & Tyres	Executive: 6.0x15 & P205/65 R15 95H		
Dimensions (mm)	Executive: 4861	Length: 1794	Width: 1448
	Wagon: 4903	1794	1478
Ground Clearance (mm)	143		
Towing Capacity (kg)	Holden approved 1200kg, 1590kg & 2100kg towing equipment is available. See your Holden Dealer for details.		
Luggage Capacity (litres)	Sedan: 443 Wagon: 2491 (Rear seat folded down).		
Kerb Weight (kg)	Executive sedan: 1362 Executive wagon: 1398		
Routine Service Intervals (km)	1500km, 10,000km, then every 10,000km.		



Recycled

A word about this catalogue. We have tried to make this catalogue as comprehensive and factual as possible. However, since the time of printing some of the information you'll find here may have been updated. Also, some of the equipment shown or described through this catalogue may have been changed and/or is available at extra cost. And the right is reserved to make changes at any time without notice, in prices, colours, materials, equipment and models. Your Holden Dealer has details, and before ordering, you should ask him to bring you up to date. No Holden Dealer or other person is authorised or permitted to give or make any statement, assertion or undertaking in relation to the quality, performance characteristics, descriptions or fitness for any purpose of any Holden product which is at variance with any written statement, assertion or undertaking on any of these subjects given or made by General Motors-Holden's Automotive Ltd. A.C.N. 006 893 232 or General Motors-Holden's Sales Pty. Ltd. A.C.N. 004 668 831 in its published sales literature, and neither company accepts any liability for any such unauthorised action. General Motors-Holden's Automotive Ltd and General Motors-Holden's Sales Pty. Ltd. have franchised dealers in many parts of Australia for the sale of service parts and the provision of service to owners of Holden's products. Every end-user is made to ensure that such dealers carry adequate stocks of service parts, but neither General Motors-Holden's Automotive Ltd. nor General Motors-Holden's Sales Pty. Ltd. makes any promise other than that contained in the New Vehicle Warranty given by General Motors-Holden's Automotive Ltd. that such parts or service facilities will be available at any specific location or at any particular time. <sup>1</sup> Calculated using AS2877 city cycle and national average capital city cost of LPG (27.4c) and petrol (68.19c), May 1994. Informed Sources Pty. Ltd. AS2877 figures are provided to assist you in comparing the fuel consumption of Commodore Series II with other vehicles. The actual fuel consumption will depend, however, on many factors, including your driving habits, the prevailing conditions and your vehicle's equipment, condition and use. Copyright General Motors-Holden's Automotive Limited. Printed by: Incolour Printing Pty. Ltd., 195 Chesterville Road, Moorabbin, Vic. 3189, September 1994. AD10548.





**HOLDEN**  
Commodore

*There's nothing quite like a Holden.*