

Monaro



HOLDEN
DRIVE ON



holden.com.au



— Monaro CV8 in Quicksilver

Can we make you a car that redefines style? This is the car that inspired the rebirth of the mighty Pontiac GTO. The car that got Australia talking. It's the car that redefined motoring: the car that captured the imagination of every driver who ever wanted to get behind the wheel of a vehicle that combines award-winning automotive design with exhilarating power. Sleek curves, a low profile, all captured in shimmering colour. Everything we love. Everything we know. Everything we believe, built into the one car we always wanted to build. The car many have dreamt about, driving forward the spirit of Holden.



Can we make you a car with unparalleled luxury? Why don't you be the judge. Stop. Look. Take it all in. Goosebumps? Hardly surprising. For this is a special kind of car. The kind of car you've always wanted. The kind of car that makes you look twice. The way the body seems to wrap around the cabin, the smooth curves of the nose and tail. The subtle styling of the front and rear skirts. The expansive bonnet that gives you a sense of restrained power. And as for the inside. True luxury. The only goosebumps that you'll ever feel here are those of sheer indulgence.



Can we make you a car with breathtaking performance? This is a car designed with the driver in mind. Everything we've learned in over fifty years has been integrated into the Holden Monaro. Whether you choose the manual or automatic, Monaro's awesome new High Output Generation III V8, with the throaty dual exhaust, simply demands to be driven. You'll feel it the moment you sit behind the wheel. Take a seat in a vehicle created for the future and rediscover the joy of driving a car that delivers an exhilarating level of performance.



Can we make you one of the lucky ones? Many dream of owning a Monaro, but few will ever own one. To make your Monaro more exclusive, it can be built to specific order, to the preferences and requirements of the individual. Choice of colour, a range of features and accessories, and a choice of complementing colour interiors. Which is why each Monaro on the road has such a stylish presence. But then, our vision was to create the most eye-catching, unique sports coupe on our roads. You could be one of the lucky ones to own one.



Now, can we make you one? The first thing you'll need to do is talk to your Holden Retailer. After all, there is much you need to discuss. Even after you've chosen a colour, you'll find there are a whole host of tough decisions yet to be made. You'll have to choose which accessories you would like, which interior trim you want, (this of course must complement the exterior colour). The end result is a unique Holden Monaro. Yours! A vehicle that not only performs like no other car you've ever driven, but also looks like no other car on the road.



We can make it ergonomic Seat yourself in this true driver's cockpit and look around. Everything has been designed with you in mind. The dash is positioned to ensure an optimal view of the road, laid out with the style and sophistication befitting one of the world's truly great sports cars. There are fingertip controls within easy reach and instruments that are colour co-ordinated with the exterior plus climate control that keeps you comfortable in all driving conditions. Put your hands on the wheel and you'll know at once. This is the car you've always wanted to drive.



We can make it luxurious Open the door and breathe deeply. Every Holden Monaro is upholstered in stunning soft leather. The electric seat controls help you find your ideal driving position, and return to it at the touch of a button. Nestle into the wide, well-supported leather seats. Notice the ample head and legroom in the rear. You see, the Monaro is a genuine 2 + 2, offering the performance and handling of a sports coupe with the comfort and luxury normally associated with a European Marque. It's a vehicle designed to get your heart racing, well before you even start the engine.



Cosmo Metallic



Devil



Barbados Metallic



Redhot








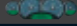

Impulse Metallic



Phantom Mica



Quicksilver Metallic

CV8 Exteriors	CV8 Interior Options	CV8 Instruments	Stitching*
Redhot	Redhot or Anthracite		Redhot
Cosmo	Cosmo		Silver Grey
Devil	Anthracite		Devil
Quicksilver	Bermuda or Anthracite		Bermuda
Impulse	Bermuda		Bermuda
Barbados	Anthracite		Silver Grey
Phantom Mica	Redhot or Anthracite		Redhot

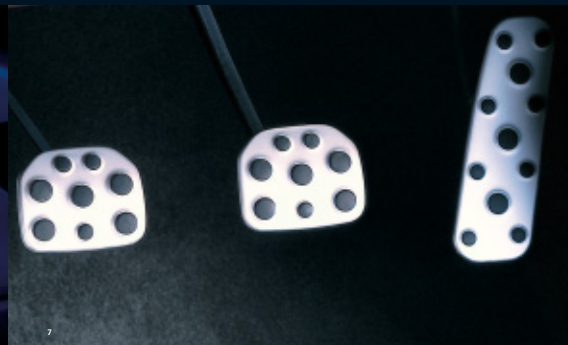
Variations between the colours shown and actual paint colours/interior trim colours may occur due to the printing process. Actual vehicle colours may appear different under certain light conditions. *Steering wheel, handbrake and gear selector only.

We can make it colourful The Monaro is available in a stunning range of exterior colours.

Depending on the exterior colour you choose, co-ordinated leather interiors include: 1_Anthracite leather interior 2_Cosmo leather interior 3_Redhot leather interior 4_Bermuda leather interior



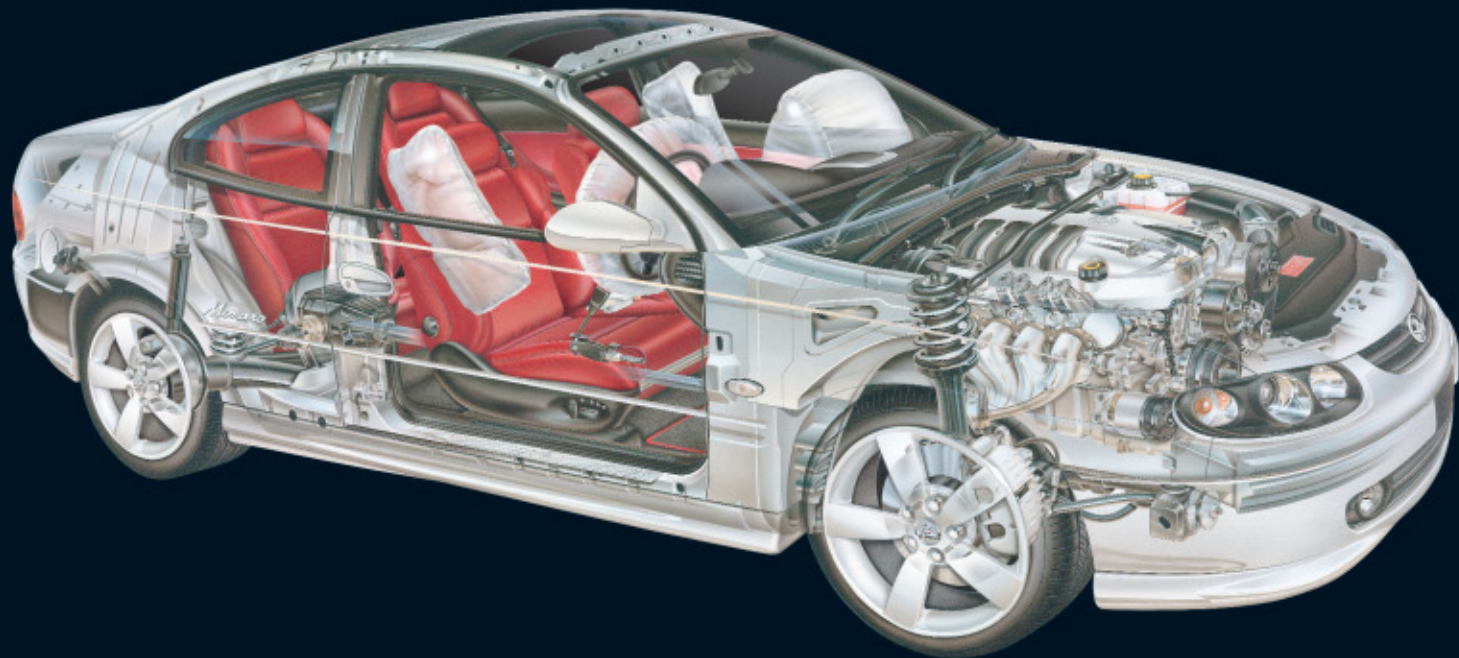
We can make it powerful After all this is the stunning Holden Monaro CV8. We wouldn't call it one of the greatest Australian performance cars ever built if we didn't mean it. The new High Output Generation III V8 generates a scintillating 245kW of power and a massive 465Nm of torque. And to control all that power we give you the option of a 6-speed manual gearbox, or 4-speed automatic transmission. This is a vehicle for those who truly love to drive.



We can make it very different The Monaro CV8 offers you:

- 1_Rear Park Assist
- 2_Electro-chromatic rear view mirror
- 3_Sports style steering wheel with illuminated switches
- 4_Plus the Monaro is fitted with powerful projector lamps for added visibility

- 5_An 8-way electric driver's seat with memory settings for three drivers
- 6_260 watt, 6-stack, in-dash CD stereo including 10 speakers and 5 preset equaliser
- 7_Racing inspired aluminium pedals
- 8_18" sports alloy wheels*



We will make it without compromise The Monaro offers both driver and passengers alike a full suite of active and passive safety systems that deliver total confidence to the driver in all road conditions.

- Pyrotechnic front seat belt pre-tensioners minimise forward movements in certain moderate to severe frontal collision
- Control-Link Independent Rear Suspension (IRS) for added safety when cornering
- Traction Control (TC) for stable acceleration on difficult road surfaces
- Front bumper side beams share an offset frontal impact over both sides of the car
- Bosch 5.3 Anti-lock Braking System (ABS) to help maintain full steering, even under braking
- Crash Pulse Optimization allows front end to crush progressively for less severe impact
- Integrated safety cell engineered to withstand high energy loads
- Front and rear anti-submarining ramps reduce risk of sliding under seat belt in a collision
- Driver and front passenger airbags have low pressure inflators designed to reduce risk of injury from airbag inflation¹
- Driver and front passenger side impact airbags reduce risk of head, neck and chest injury in certain severe side collisions²
- Strengthened upper B pillar is computer modelled to reduce side impact velocity to head, neck and chest
- Frontal Offset Enhancement package helps prevent the front wheel intruding into the footwell in a frontal collision
- Strut brace is designed to handle the additional energy loads associated with pure sports performance
- In a rear end collision, active head restraints move upwards and forwards to meet the head helping reduce whiplash

1. Front airbags will only inflate if car is struck hard in certain severe frontal collisions. Airbags form part of the Supplemental Restraint System (SRS) as they assist, but do not replace safety offered by seatbelts.
2. Side impact airbags will deploy and offer protection in some, but not all, severe side impacts.



1



2



3



4



5



6

The smartest way to own a new Holden

SmartChoices A smart way to get into a new Holden is by talking to Holden Financial Services. A wide range of finance options is on offer and you can select the product, term and payment structure to best suit your lifestyle. The SmartChoices range offers you flexibility to select from a choice of monthly repayments¹ and the option of the security of a guaranteed minimum buyback price.² For more information contact your Holden Retailer or call Holden Customer Assistance on 1800 033 349.

SmartCare Holden offers a range of competitively priced insurance products that provide tailor-made protection. The SmartCare comprehensive motor vehicle policy offers new car replacement, agreed value and a genuine Holden Approved parts guarantee plus a range of additional premium benefits.³ For more information see your local Holden Retailer or call the Holden SmartCare hotline on 1800 060 094.

Holden Leasing Holden Leasing is a vehicle fleet leasing specialist, offering a wide range of leasing and management products and services. Whatever your fleet size, Holden Leasing can provide the best in flexible, value driven and specialist fleet leasing products and services to suit your needs. Our Holden focus means we can provide the very best fleet leasing and management solutions for any business running, or wanting to run, a predominantly Holden fleet. For more information about your leasing options, please call Holden Leasing on 03 9696 7400.

The Holden MasterCard With the Holden MasterCard, 5% of every dollar you spend on credit purchases goes toward your rebate on a new Holden.⁴ You can redeem a maximum core rebate of \$3000 on any new Holden.⁴ Use your Holden MasterCard at exclusive Holden MasterCard Bonus Partners and you'll receive an extra 1% bonus rebate. Holden Retailers are Bonus Partners. When you make a Holden MasterCard purchase at a Holden Retailer you'll earn a 2% bonus rebate.⁵ You'll also pay no annual card fee in the first year, get up to 45 days interest free on credit card purchases, and a competitive rate of interest.⁶ To apply, visit any Westpac/Challenge Bank/Bank of Melbourne branch, your local Holden Retailer or call the Holden MasterCard 24-hour customer line on 1300 650 696.

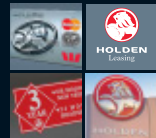
The package wouldn't be complete without extra peace of mind.

We're with you all the way Holden drivers are backed by one of the most comprehensive customer care packages on the road. With over 300 retailers and 900 Roadside Assistance centres nationwide, few other cars in Australia are supported with the level of customer care offered to Holden owners.

3 year or 100,000km New Vehicle Warranty Your peace of mind, guaranteed. Every Holden comes with a 3 year or 100,000km New Vehicle Warranty,⁷ whichever comes first. This factory backed warranty covers items including the engine, transmission, interior and exterior components. A Holden Extended Warranty is able to be purchased. For more details contact Holden Customer Assistance on 1800 033 349 or your Holden Retailer.

3 year/24 hour Roadside Assistance Go anywhere, anytime, with complete confidence. Holden Roadside Assistance, one of Australia's most comprehensive assistance packages, is complimentary for 3 years.⁸ In the event of the unexpected happening, from your keys being locked in the car to mechanical and accident advice, you can get in touch with our 24 hour hotline, 365 days of the year, by calling the toll-free number 1800 817 100. Holden Monaro owners receive the added benefits of Holden Roadside Ultra Assistance which includes accommodation, alternative transport, rental car, assistance in case of accident, theft and medical emergency and Australia-wide vehicle recovery if you are further than 100km from home. This service is delivered by Assist Australia and the combined resources of the Australian motoring organisations.

A decidedly different level of service Retailer support when you need it, where you need it. With retailers strategically located nationwide, the Holden Service Network is one of the largest in the country. Our service centres are staffed by trained technicians who have access to regular factory training, bringing them up to speed on the latest technology. If you want to know more about the extensive benefits of Holden ownership, contact Holden Customer Assistance on 1800 033 349, Monday – Friday, 8am – 7pm, Saturday 9am – 1pm EST. or visit www.holden.com.au



We can tailor your Monaro For our complete range of quality Holden accessories see your Holden Retailer 1_One of the world's most advanced satellite navigation systems, this option provides detailed route maps for just about any destination in Australia 2_Holden By Design rear wing 3_Holden By Design 'J' series alloy wheel 4_Holden approved 1600kg towing package 5_For the first time, Holden now offers a Holden By Design electronic sunroof 6_Holden Assist, an interactive car safety and security system utilising satellite and global positioning technology

1 Fees and charges apply. For the annual percentage rate applicable to you contact your local Holden Retailer. 2 Conditions apply. A disposal fee of \$385 (inc' GST) applies plus charges for excess wear and tear or excess kilometres may also apply, exclusive to SmartBuy contracts only. 3 Refer to the policy wording for specific terms, conditions and exclusions. 4 Earning and redemption of rebate is subject to the Holden MasterCard Rebate Program Rules. A maximum of \$3000 in the form of Holden MasterCard 'core' rebate (plus any additional 'bonus' rebate accumulated via the partner program) accrued over a maximum of 5 years may be applied per eligible vehicle purchased. Vehicle sales for which a fleet allowance is paid are not eligible for Holden MasterCard rebate. 5 At participating Retailers only. Credit card purchases of new or used vehicles are not eligible for the 2% Bonus Rebate at Holden Retailers. 6 The interest-free period applies where the card account is fully paid by the due date each month. 7 Refer to your owner's handbook or see your Holden Retailer for full terms, conditions and exclusions. 8 In remote or sparsely populated areas you may experience delays in obtaining Roadside Assistance owing to your location. Refer to the Holden Roadside Assistance in the glovebox wallet for more details.

FEATURES	CV8
S. Standard feature. O: Option.	
H: Option from Holden By Design. A: Accessory.	
POWERTRAIN	
245kW High Output 5.7 litre Generation III Alloy V8 engine	
with Performance exhaust & Strut Brace.	S
6-speed manual transmission.	S
Electronic control 4-speed automatic transmission. Power or economy mode.	O
Limited slip differential.	S
MECHANICAL	
Control-Link Independent Rear Suspension.	S
Monaro FE2 Sports Suspension. (Inc. gas pressure front and rear dampers).	S
Anti-lock Braking System (ABS).	S
Traction Control (TC). Off switch.	S
WHEELS (steel space saver spare wheel)	
18" x 8" alloy wheels. 235/40 R18 91W tyres.	S
18" x 8" 'M' series five-spoke alloy wheels. 235/40 R18 tyres (4)	H
18" x 8" 'J' series multi-spoke alloy wheels. 235/40 R18 tyres (4)	H
Alloy wheel lock nuts. Set of four.	H/A
EXTERIOR	
Projector headlamps.	S
Front foglamps. Black bezel.	S
Headlamp guards.	A
Bonnet protector.	A
Radiator insect screen.	A
Mudflaps (moulded).	A
Electric remote control exterior mirrors in body colour.	S
Towing mirrors.	A
Front, side & rear skirts.	S
Sports wing. High-mount stop lamp.	H
Chrome twin tips.	S
Quick response LED centre stop lamp.	S
License plate frames, standard height or slimline.	A
Full immersion body corrosion protection.	S
Stainless steel long life exhaust system.	S
DRIVER	
Steering wheel height & reach adjust.	S
Satin chrome spokes on steering wheel.	O
Sports profile leather wrap steering wheel, in Anthracite.	S
Sports profile leather wrap steering wheel, in Red, Bermuda Blue or Cosmo.	H
Leather wrap satin chrome gear selector & handbrake handle. Anthracite.	S
Leather wrap satin chrome gear selector & handbrake handle.	
Red, Bermuda Blue or Cosmo.	H
Leather covered front armrest.	S
Cruise control.	S

Electrochromatic interior rear vision mirror reduces headlamp glare automatically.	S
Variable intermittent road speed sensitive wipers.	S
Rear Park Assist.	S
Automatic headlamps. Switch on at twilight or low light.	
Off in normal daylight. Manual override.	S
Headlamps auto off after leaving parked car. Variable delay.	S
Trip computer includes: Average speed. Odometer. Average economy on trip.	
Elapsed trip time. Trip distance. Fuel used on trip. Audible & visual speed warning (4 adjustable settings). Distance to empty. Instant economy.	
Trip distance to go. Time to go. Remaining fuel. Stop watch.	S
Service reminder. Appears 1,000km before service is due.	S
Satellite navigation. (Global Positioning System).	H
Auto transmission 'gear selected' indicator in multi function display.	S
Chrome accent rings around instruments.	S
Colour coded instruments:	
Redhot, Bermuda Blue, Cosmo, Yellow Devil, Barbados.	S
Tachometer.	S
Warning lamps include rear lamp failure.	S
Warning & chime: Parking brake on while vehicle moving.	
Low fuel. High engine temperature.	S
Mobile phone power socket in console.	S
Mobile phone holder.	A
Sound system able to accommodate cellular phone.	
Auto mute when phone is in use.	S
SOUND SYSTEM	
Blaupunkt AM/FM stereo electronic tune radio.	
Local/distant selector switch. Automatic station store memory.	S
Radio display repeats in multi function display.	S
Sound system controls on steering wheel. Illuminated switches.	S
Speed dependent volume control.	S
Compact disc in-dash changer (6 disc).	S
5 preset graphic equalizer: vox, pop, with boost function.	S
10 speaker elements, including subwoofers. Total 260 watts.	S
Antenna on rear glass.	S
SEATING	
Seat & upper door trim in Anthracite leather.	S
Seat & upper door trim in coloured leather.	O
Bucket seats. High rise centre console armrest.	S
Sheepskin seat inserts.	A
Sports seats with high side support wings on cushion & seat back.	S
Active front seat head restraints & seatbacks to help reduce risk of injury in collision from behind. Height adjust.	S
8-way electric adjustment of front seats: Slide. Cushion tilt. Height. Recline.	S
Driver's seat has memory settings for 3 drivers.	S

Electric front seat slide for rear seat access.	S
Driver & front passenger seat adjustable lumbar support.	S
Driver & front passenger airbag (full size).	S
Driver & front passenger side impact airbag.	S
Front lap/ash seat belts have webbing clamps & pyrotechnic pre-tensioners.	
Buckle mounted to seat for consistent fit when seat moved forward or back.	S
Front seat belt force limiter, controls maximum force on chest.	S
Front seat belt ash height adjust.	S
Anti-submarining ramps in seats reduce risk of sliding under seat belt in a collision.	S
Lap/ash seatbelts for all seats.	S
Rear seat child restraint anchor points.	S
CABIN COMFORT	
Dual temperature zone climate control: driver & front passenger.	S
Priority Key for 2 people automatically restores when unlocking car, settings for: Climate control. Sound system. Trip computer. Speed alert. Transmission power/economy mode. Instrument dimmer. Headlamps-off time delay.	S
Power front windows. Express down driver & passenger window.	
Remain powered on time delay after engine switched off.	S
Electric sunroof. Tilt & slide. Can slide fully or to 2 preset positions.	
Auto close when vehicle switched off, unless overridden. Anti-jam facility.	
Auto close when vehicle immobilised.	H
Alloy pedal cluster.	S
Cigarette lighter & ashtray, front & rear.	A
Vanity mirror, driver & passenger side. Illuminated, with cover.	S
Interior lighting, time delay on entry.	
Automatic illumination when ignition is turned off. Auto off after 1 hour.	S
Courtesy lamps on doors.	S
Footwell lamps, front.	S
Front reading spotlamps.	S
Suede finish on lower door trim.	S
"Steel" finish dash fascia.	S
5 preset graphic equalizer: vox, pop, with boost function.	S
10 speaker elements, including subwoofers. Total 260 watts.	S
Satin chrome interior door handles.	S
Stainless steel sill plates.	S
Carpeted floor mats, tailored.	S
STORAGE, CARGO	
Twin fold-out cup holders in instrument panel.	S
Mobile phone concealed storage compartment.	S
Centre console compartment, with liner.	S
Door storage bins.	S
Storage pocket rear of driver & passenger seat.	S
Cargo protective liner.	A
Carpeted boot floor & spare wheel cover.	S
Towing equipment (see specifications).	A

SECURITY	CV8
Key operates interior lighting.	S
- Operates exterior lamps, to show location of car at night.	S
- Engages door deadlocks when pressed twice.	S
- Releases deadlocks.	S
- Operates central locking for keyless entry through driver's door only.	S
- Operates both doors when button kept pressed.	S
- Enables/disables alarm system.	S
- Opens boot.	S
- Disables remote boot release button in glovebox (when locking).	S
Key has rolling security code.	S
Horn chirps if door is ajar when remote locking.	S
Flashing red interior warning lamp shows vehicle is protected.	S
Engine disabled to immobilise vehicle when key removed from ignition.	S
Unique code for each vehicle.	S
Door lock in driver's door only.	
Lock cylinder 'freewheels' if anything other than correct key is inserted.	S
Slip-type steering lock. If steering wheel is forced, front wheels will not turn.	S
Sound system security will operate only in original vehicle, to deter theft.	S
ROAD SAFETY	
Emergency mode after seat belt pre-tensioners are triggered. On-board computer turns engine & fuel pump off. Unlocks doors. Turns dome lamp on.	S
Warning triangle for roadway.	A
Holden Assist. Includes: Roadside assistance: call operator on system. SOS button: calls operator, who locates you for emergency services. Airbag deployment or seatbelt pre-tensioners activated: location found automatically & services notified. Keys locked in: operator unlocks.	
Unauthorised entry: police alerted. Car stolen: tracking & immobilisation.	
Battery low: operator contacts driver.	O

SPECIFICATIONS				
	245kW 5.7 LITRE HIGH OUTPUT GEN III V8			
Engine	Aluminium alloy block & cylinder heads. 'V' configuration. Cross-bolted main bearings. 6-bolt. Cold air intake. High flow air cleaner. OHV design with cross flow cylinder heads. Sequential fuel injection. High energy, Distributorless ignition, with coil-per-cylinder. Twin knock control sensors. Computer diagnostics. Electric cooling fan. Stainless steel exhaust. High Performance dual exhaust system.			
Bore x Stroke (mm)	99 x 92			
Capacity (cc)	5667			
Compression ratio (1:1)	10.1			
Recommended fuel octane rating	91 (ULP)			
Power (ECE, kW)	245 @ 5600rpm			
Torque (ECE, Nm)	465 @ 4000rpm			
Gear ratios (1:1)	Manual	Auto		
	1st	3.06		
	2nd	1.78		
	3rd	1.30		
	4th	1.00	0.70	
	5th	0.74		
	6th	0.50		
	3.46	3.08		
Final drive ratio				
Petrol tank (L)	75			
Brakes	Four wheel disc. Ventilated front disc & finned caliper.			
Anti-lock braking system (ABS)	4-channel			

Traction control (TC)	When sensors detect imminent rear wheel spin, engine torque is reduced. If one wheel is about to spin, braking is applied to transfer torque to wheel with better traction.			
Suspension	Front	MacPherson strut. Direct acting stabiliser bar.		
	Rear	Progressive rate coil springs. Control-Link Independent Rear Suspension (IRS). Semi-trailing arm. Progressive rate miniblock coil springs. Stabiliser bar.		
Monaro FE2 sports suspension	Front	Sports springs. Stabiliser bar. Sports springs. Gas pressure dampers. Stabiliser bar.		
Steering	Variable ratio rack & pinion.			
Track (mm)	Front	1559		
	Rear	1577		
Turn circle (kerb to kerb, m)	11.0			
Wheelbase (mm)	2788			
Exterior dimensions (mm)	Length	Width	Height	
	4789	1841	1397	
Interior dimensions (mm)	Leg	Shoulder	Head	Hip
	1072	1515	946	1472
	942	1312	848	1275
Cargo (L)	370			
Kerb weight (Est. kg)	Manual	Auto		
	1658	1664		
Towing	Holden approved 1600kg towing equipment is available. See your Holden Retailer for details.			
Service	1500 (at no cost) inspection. 10,000km then every 10,000km or 6 months, whichever comes first. Maintenance-free, long life, accessory drive belt with automatic tensioner. Dual belt. Holden Retailer 'Tech 2' computerised analysis available for engine management system.			

Vehicle weights based on pre-production data. All fluid levels at their nominated capacity

A word about this catalogue. We have tried to make this catalogue as comprehensive and factual as possible. However, since the time of printing some of the information you'll find here may have been updated. Also, some of the equipment shown or described through this catalogue may have been changed and/or is available at extra cost. Further, Holden Ltd. reserves the right to make changes at any time without notice, in prices, colours, materials, equipment and models. Your Holden Retailer has details, and before ordering, you should ask them to bring you up to date. No Holden Retailer or other person is authorised or permitted to give or make any statement, assertion or undertaking in relation to the quality, performance characteristics, descriptions or fitness for any purpose of any Holden product which is at variance with any written statement, assertion or undertaking on any of these subjects given or made by Holden Ltd. A.B.N. 84 006 893 232 or General Motors-Holden's Sales Pty. Ltd. A.B.N. 80 004 688 831 in its published sales literature, and neither company accepts any liability for any such unauthorised action. Holden Ltd. and General Motors-Holden's Sales Pty. Ltd. have authorised retailers in many parts of Australia for the sale of service parts and the provision of service to owners of Holden's products. Every endeavour is made to ensure that such retailers carry adequate stocks of service parts, but neither Holden Ltd. nor General Motors-Holden's Sales Pty. Ltd. makes any promise other than that contained in the New Vehicle Warranty given by Holden Ltd. that such parts or service facilities will be available at any specific location or at any particular time. Express warranties offered for Holden products are subject to the conditions set out in all vehicle handbooks. Details also available from Holden on request. Copyright Holden Ltd. September 2003. MONA0603 AD11297