

HOLDEN BARINA



HOLDEN
DRIVE ON

holden.com.au



A heap of great features like air conditioning, dual airbags, front power windows, CD/MP3 player and a steering wheel with mounted sound system remote controls means you're going to love driving the new Holden Barina. Whilst a cool, stylish and athletic design ensures you'll look just great doing it. Engineered and manufactured in Europe, the compact Barina might look like a small car but you can be absolutely sure it's big on quality, safety and performance.



a new level of safety

The new Barina range maintains a strong focus on safety with full size driver and front passenger airbags that are designed to deploy in severe frontal collisions standard on all models. Furthermore, every Barina is built with a central survival cell, front and rear crumple zones and side impact protection beams. You'll find additional safety features like strengthened front seats, energy absorbing padding inside the front doors and use of high strength steel in key areas.

The Barina's pedal release system helps reduce the risk of injury to the feet and lower legs in the event of a major frontal collision by releasing the clutch and brake pedals from their anchor points. While front seat belt height adjusters, pre-tensioners and force limiters all assist to reduce impact on the body.

Barina's high level of safety is further enhanced by the Brake Assist system which is standard across the range. This system senses urgency when the brake pedal is pressed and increases braking pressure, promoting shorter emergency stopping distance.



park yourself in the 3 Door Barina

You'll be zipping in and out of car parks with ease in the new 3 Door Barina. Its German engineered 1.4 litre DOHC 16 valve engine makes it an extremely lively vehicle. And its sequential fuel injection means you get great engine performance and efficiency.

Based on the latest engineering advancements, the 3 Door has driver-oriented suspension for a more refined driving experience and its rigid body structure offers more dynamic handling and control.


There's even an on board diagnostic system to alert you to potential engine problems if they ever occur.

Other standard features include speed sensitive electric power steering for easy parking and more precise driving, while the fully galvanised body offers thorough rust protection.

The new 3 Door Barina is as stylish on the inside as it is out. Standard features include air conditioning, front power windows, rear head restraints, multi function display showing time, temperature and audio information and programmable intermittent windscreen wipers for safer driving in all weather conditions.

Keyless remote central locking deadlocks the doors and locks the tailgate and fuel flap. While the premium six speaker, Blaupunkt PIN coded CD stereo with MP3 capabilities offers superior sound and comes complete with mounted sound system remote controls on the steering wheel.





make space for the 5 Door Barina

Driving around looking for a car park is an absolute pleasure in the new 5 Door Barina. With dynamic handling and control, the only annoying thing about parking will be actually having to stop.

With all the great features of the 3 Door model and plenty of room to move, make space in your garage for the Barina 5 Door.

we've made plenty of space for you

From the sculpted console, to the design and positioning of the gear shift, instruments and controls, it's obvious that every detail has been carefully thought out in the 5 Door Barina.

Standard features include a height adjustable steering column and driver's seat, two rear head restraints, air conditioning and power front windows and mirrors.

The 4 doors on this model means getting in and out is easy. Whilst 60/40 split folding back seats that flatten, together with ergonomic front seats, means you get more room for packages.

Every Barina has storage compartments for everything from coins to cappuccinos. A steering lock, protected door locks, as well as childproof rear door locks ensure you feel more secure in the Barina, whilst keyless remote central locking deadlocks the doors and locks the tailgate and fuel cap. It also lets you unlock all doors simultaneously, or for your safety, the driver's door only.





there's nothing reserved about the Barina SRI

If you love to drive then you'll love the Barina SRI. It takes the standard features of the 3 and 5 Door models and adds a sportier appearance together with a more athletic performance.

With a 1.8 litre engine and five speed manual transmission, the SRI is a finely tuned vehicle that comes with an incredible balance of power and control.

16 inch alloy wheels (with a steel spare), front fog lamps, side skirts, chrome exhaust tip, modified lower grille, red brake calipers, a front spoiler lip and rear roof spoiler add to the athletic appeal of the SRI exterior. While body colour door handles, power front windows and mirrors complete the image.



it's perfect for control freaks

The cool, sporty styling is continued inside the Barina SRi. You'll find a leather wrap steering wheel with mounted stereo controls, sports seats, three rear head restraints, matt chrome centre console surround and a stylish dash with white instrument dials, and an alloy finish pedal cluster.

The SRi also comes with sports suspension, electronic cruise control and an Anti-lock Braking System (ABS) which prevents the wheels locking up, allowing you to steer while braking heavily.



Barina Genuine Accessories

there are rewards to buying a Holden that go beyond the joy of driving one

For more information contact
 Holden Customer Assistance on 1800 033 349
 Monday to Friday 8am to 7pm or Saturday 9am to 1pm EST
 or visit www.holden.com.au



1 Rear sunguard 2 Weathershield
 3 Headlamp guard 4 Floor mats 5 Roof sports bars
 6 14" x 5.5" 5-spoke 4 stud alloy wheel* 7 15" x 6" 7-spoke 4 stud alloy wheel – sports*
 8 15" x 6" 7-spoke 4 stud alloy wheel – luxury*

*Wheel sold separately. Tyre not included

Easy Purchase Options	
Finance	SmartChoices Provided by GMAC Financial Services is an array of automotive finance products designed to help the dream of driving a new Holden become a reality. Just select the product, term and payment structure that best suits your lifestyle and your Holden Dealer can provide more information.
Insurance	Holden SmartCare Insurance provided by GMAC Financial Services offers a range of competitively priced insurance products, providing tailor-made protection, at whatever level of cover you need. For more information, call the SmartCare hotline on 1800 060 094.
Leasing	Holden Leasing Whatever the size of your fleet, Holden Leasing offers a range of flexible, value driven, specialist fleet leasing products. Years of experience means they can provide the best solution for you. Call Holden Leasing on 03 9696 7400 for more information.
Holden MasterCard	Holden MasterCard can assist you to get into a new Holden sooner. 10% of credit purchases on this card goes towards a Rebate of up to \$3,000 on your new Holden. ¹ That's a \$1 saving towards a new Holden for every \$10 spent. There are a range of extra features including up to 45 days interest free ² on credit purchases and a competitive interest rate. Apply ³ online at www.holden.com.au/mastercard or call Holden MasterCard's 24 hour help line 1300 650 696.
Ownership Benefits	
Service	Holden Service With over 300 Holden Dealers, Holden can supply an enviable level of customer care. Our Service Network is one of the largest in the country. Only Holden Dealership technicians have access to regular Holden factory training.
Warranty	Holden Warranty Every new Holden comes with a New Vehicle Warranty, covering your Holden for 3 years or 100,000 kilometres, whichever comes first. This factory backed warranty covers items including the engine, transmission, interior and exterior components. For support after that, a Holden Extended Warranty can be purchased for vehicles that have travelled less than 100,000 kilometres and prior to the vehicle being registered for 3 years from date of first registration. Refer to your owner's handbook or see your Holden Dealer for full terms, conditions and exclusions.
Roadside Assistance	24 Hour Roadside Assistance Provided for the first 3 years of your new Holden's life ⁴ , Holden Roadside Assistance is one of Australia's most comprehensive assistance packages with over 3000 Roadside Assistance patrols nationwide. ⁵ There to help with even the smallest service, the toll-free Roadside Assistance hotline is always open, 1800 817 100.
Club Holden	Owning a Holden has another great benefit – Club Holden. It's a free online service that provides exclusive vehicle and owner information tailored to your Holden. Register today at www.club.holden.com.au . ⁶

¹ A total of \$3000 in the form of Holden Card 'Core' Rebate (plus additional 'Bonus Rebate' accumulated via the Partner Program) accrued over a maximum of five years may be applied per eligible vehicle purchased. Vehicle sales for which a fleet allowance is paid are not eligible for Holden MasterCard Rebate. Earning and redemption of Rebate towards a new Holden is subject to the Holden Card Rebate Program Rules. ² The interest-free period applies where the card account is fully paid by the due date each month. ³ Applications are subject to Westpac's normal lending criteria. ⁴ From date of first registration. ⁵ In remote or sparsely populated areas you may experience delay in obtaining Roadside Assistance. Refer to the Roadside Assistance brochure in your glove box for full terms and conditions of this service. ⁶ Most Holden vehicles from 1997 can be registered for Club Holden.

features

	3Dr/5Dr	SRI		3Dr/5Dr	SRI		3Dr/5Dr	SRI
Powertrain			- Chrome-look oval tail pipe		S	- Driver and front passenger airbag (full size)	S	S
- 1.4 litre, Twinport, DOHC 16 valve ECOTEC 4 cylinder engine	S		- Anti-corrosion: Fully zinc-galvanised body and panels.			- Two padded rear seat head restraints. Height adjust	S	
- 1.4 litre, DOHC 16 valve ECOTEC 4 cylinder engine (auto only)	O		- Bodyside dip-primed electrostatically	S	S	- Three padded rear seat head restraints. Height adjust		S
- 1.8 litre, DOHC 16 valve ECOTEC 4 cylinder engine		S				- Rear seat child restraint anchor points	S	S
- 5-speed close ratio manual transmission	S	S				- Childproof rear door locks**	S	
- 4-speed automatic electronic control transmission with Economy, Sport and Winter mode		O						
Mechanical			Driver			Cabin comfort		
- Speed sensitive power steering. Electric assist	S	S	- Steering wheel height adjust	S	S	- Heating/ventilation system. 4 face-level vents. Side window demist. Pollen filter	S	S
- Front ventilated disc brakes and rear drum brakes	S		- Sports steering wheel with perforated leather-wrap rim		S	- Tinted front, side and rear windows	S	S
- 4-wheel disc brakes. Front ventilated		S	- Electronic cruise control		S	- Air conditioning	S	S
- Anti-lock Braking System (ABS)		S	- Internally adjustable exterior mirrors		S	- Alloy finish pedal cluster		S
- Brake Assist (BA)	S	S	- Power mirrors. Heated glass with auto off		S	- Power windows, front. Express up/down	S	S
- Sports suspension		S	- Electric headlamp level adjust	S	S	- Carpeted front and rear floor mats	A	S
			- Programmable intermittent wipers	S	S			
			- Multi function display: Time. Date. Outside temperature. Audio display. Ice warning – visual	S	S			
			- Variable dimming of instruments	S	S			
			- Warning lamps inc: low fuel, check engine, emissions	S	S	Storage, Cargo		
			- Audible warning if headlamps left on	S	S	- Cup holder in centre console and glove box door	S	S
						- Tray at side of each front seat	S	S
Wheels, Tyres			Sound system			- 60/40 split fold rear seatback	S	S
- 14" x 5.5" steel wheel. 175/65 R14 82T tyres (with 14" steel spare wheel)		S	- Blaupunkt AM/FM stereo electronic tune radio. Seek. Preset station scan. 18 FM/12 AM preset stations. Blaupunkt compact disc player (single disc) with MP3 function	S	S	- Carpeted cargo area	S	S
- 16" x 6" 5-spoke alloy wheels. 195/45 R16 84V tyres (with 15" steel spare wheel – tyre 185/55 R15 82H)		S	- Multi function display includes: Radio band. Preset station number. Frequency. CD/MP3 functions	S	S	- Roof sports bars	A	A
- 14" x 5.5" 5-spoke 4 stud alloy wheel	A		- Sound system remote controls on steering wheel	S	S	- Trunk liner	A	A
- 15" x 6" 7-spoke 4 stud alloy wheel – sports	A		- Six premium quality speakers. Total 80 watts. Tuned for CD sound. Extended frequency response. Enhanced bass performance	S	S			
- 15" x 6" 7-spoke 4 stud alloy wheel – luxury	A					Security		
						- Radio frequency remote control key operates: interior lighting, central locking for keyless entry, door deadlocks, tailgate, fuel filler door	S	S
						- Engine immobilised automatically when key removed from ignition	S	S
Exterior			Seating			- Key can selectively unlock driver's door only	S	S
- Body colour bumpers	S	S	- Full face cloth seat trim	S	S	- Audible warning if key left in ignition	S	S
- Body kit: Irmischer front and side skirts. Rear roof spoiler		S	- Sports front seats		S	- Door lock in driver's door only. Lock cylinder 'freewheels' if anything other than correct key is inserted	S	S
- Red brake calipers		S	- Padded front seat head restraints. Height adjust	S	S	- Audio display in multi function display separate from sound system unit to deter theft. Security PIN coding	S	S
- Foglamps, front		S	- Brake and clutch pedals release in severe frontal collision*	S	S			
- Foglamp, rear	S	S	- Driver's seat height adjust	S	S			
- Headlamp guards	A	A	- Automatic front seat belt pre-tensioners.	S	S	Road safety		
- Bonnet protector	A	A	- Front seat belt force limiters	S	S	- Warning triangle for roadway	A	A
- Mudflaps (front only)	A	A	- Seat belt sash height adjust, front seats	S	S	- First aid kit	A	A
- Black bodyside mouldings		S	- All seat belts retracting lap / sash	S	S			
- Body colour bodyside mouldings		S	- Anti-submarining ramps in all seats reduce risk of sliding under seat belt in a collision	S	S			
- Body colour exterior mirrors		S						
- Body colour door handles		S						
- Metallic paint	O	O						
- Tail lamps tinted dark		S						

A word about this catalogue. We have tried to make this catalogue as comprehensive and factual as possible. However, since the time of printing some of the information you'll find here may have been updated. Also, some of the equipment shown or described through this catalogue may have been changed and/or is available at extra cost. Further, Holden Ltd. reserves the right to make changes at any time without notice, in prices, colours, materials, equipment and models. Your Holden Dealer has details, and before ordering, you should ask them to bring you up to date. No Holden Dealer or other person is authorised or permitted to give or make any statement, assertion or undertaking in relation to the quality, performance characteristics, descriptions or fitness for any purpose of any Holden product which is at variance with any written statement, assertion or undertaking on any of these subjects given or made by Holden Ltd. A.B.N. 84 006 893 232 or General Motors-Holden's Sales Pty. Ltd. A.B.N. 80 004 688 831 in its published sales literature, and neither company accepts any liability for any such unauthorised action. Holden Ltd. and General Motors-Holden's Sales Pty. Ltd. have authorised dealers in many parts of Australia for the sale of service parts and the provision of service to owners of Holden's products. Every endeavour is made to ensure that such dealers carry adequate stocks of service parts, but neither Holden Ltd. nor General Motors-Holden's Sales Pty. Ltd. makes any promise other than that contained in the New Vehicle Warranty given by Holden Ltd. that such parts or service facilities will be available at any specific location or at any particular time. Express warranties offered for Holden products are subject to the conditions set out in all vehicle handbooks. Details also available from Holden on request. Copyright Holden Ltd. November 2004. BAR1004 AD11559

specifications

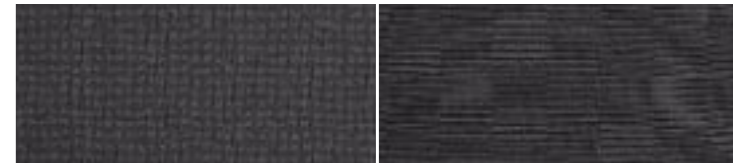
	1.4 ECOTEC Twinport engine (Manual only)	1.4 ECOTEC engine (Auto only)	1.8 ECOTEC engine (Manual only)
Engine	Variable intake control and high exhaust gas recirculation levels. Four cylinders. Alloy cylinder head. Double overhead camshafts operate four valves per cylinder. Sequential multipoint fuel injection. Distributorless direct ignition system. Coil-at-plug ignition. Cylinder selective knock control. Electronic throttle control. Electric cooling fan. 120 amp alternator	Four cylinders. Alloy cylinder head. Double overhead camshafts operate four valves per cylinder. Sequential multipoint fuel injection. Distributorless direct ignition system. Coil-at-plug ignition. Cylinder selective knock control. Electronic throttle control. Electric cooling fan. 120 amp alternator	
Bore x Stroke (mm)	73.4 x 80.6	77.6 x 73.4	80.5 x 88.2
Capacity (cc)	1364	1389	1796
Compression ratio (:1)	10.5		
Power (ECE, kW)	66 @ 5600rpm	66 @ 6000rpm	92 @ 6000rpm
Torque (ECE, Nm)	125 @ 4000rpm	125 @ 4000rpm	165 @ 4600rpm
Gear ratios (:1)	Manual 1st 3.73 2nd 2.14 3rd 1.41 4th 1.12 5th 0.89 Axle 3.74	Automatic 2.81 1.48 1.00 0.74 4.12	Manual 3.73 2.14 1.41 1.12 0.89 3.74
Recommended petrol octane	91 (ULP) or 95 (PULP) for slightly higher performance		
Fuel economy (L/100 km*)	Manual 5.9	Automatic 7.6	Manual 7.7
Petrol tank (L)	44		
Brakes	Front ventilated disc brakes. Rear drum brakes		4-wheel disc brakes. Front ventilated
Anti-lock Braking System (ABS)			4-sensor, 4-channel
Suspension	Front: MacPherson strut. Wishbones. Gas pressure dampers. Stabiliser bar. Rear: Torsion beam and trailing arms. Progressive rate miniblock coil springs. Gas pressure dampers. Stabiliser bar		
Steering	Rack and pinion. Speed sensitive, electric assist power steering		
Turn circle (m) (kerb to kerb)	9.9		
Track (mm)	Front: 1417 Rear: 1408		
Wheelbase (mm)	2491		
Dimensions (mm)	Length 3839	Width 1646 1955 (mirrors)	Height 1440
Interior dimensions (mm)	Leg 981 896	Shoulder 1344 1348	Head 982 972
	3 Door Front		Hip 1257
	Rear		1230
	5 Door Front		1257
	Rear		1246
Cargo volume (L)	Rear seat up, (under cargo cover): 260. Rear seat down, (to roof): 1060		
Kerb weight (kg) (Est. inc. A/C and all fluids)	Manual 993 1018	Automatic 1033 1058	Manual 1088
Service	1500km (at no cost) inspection, then every 15,000km or 12 months, whichever comes first. Holden Dealer 'Tech 2' computerised analysis available for engine management system. Oil filter module with change of paper insert only. Maintenance-free drive belt for accessories. 60,000km/4 year air cleaner. 30,000km/2 year cabin clean-air filter and fuel filter. Audible brake disc pad replacement warning		

* Fuel consumption figures based on ADR 81/01 tests. These figures are provided to assist you in comparing the fuel consumption of Barina with other vehicles. The actual fuel consumption will depend, however, on many factors, including your driving habits, the prevailing conditions and your vehicle's equipment, condition and use.

This colour chart illustrates the available exterior colours of Holden Barina. As these are printed colours and not actual samples, variations between those illustrated and actual paint/trim may occur. Metallic paints are an extra cost item and certain colours may not be available from time to time.

colour and trim

	3 Door	5 Door	SRI
Fabric	Orleans	Orleans	Duke
Trim Colour	Dark Charcoal	Dark Charcoal	Dark Charcoal
Casablanca White	•	•	
Magma Red	•	•	•
Star Silver (metallic)	•	•	•
Black Sapphire (metallic)	•	•	•
Atlantis Blue (metallic)	•	•	
Spearmint Silver (metallic)	•	•	
Lilac Grey (metallic)	•	•	



Orleans

Duke



Casablanca White



Magma Red



Black Sapphire (metallic)



Atlantis Blue (metallic)



Star Silver (metallic)



Spearmint Silver (metallic)



Lilac Grey (metallic)