



**HOLDEN**  
DRIVE ON

[holden.com.au](http://holden.com.au)

COMMODORE

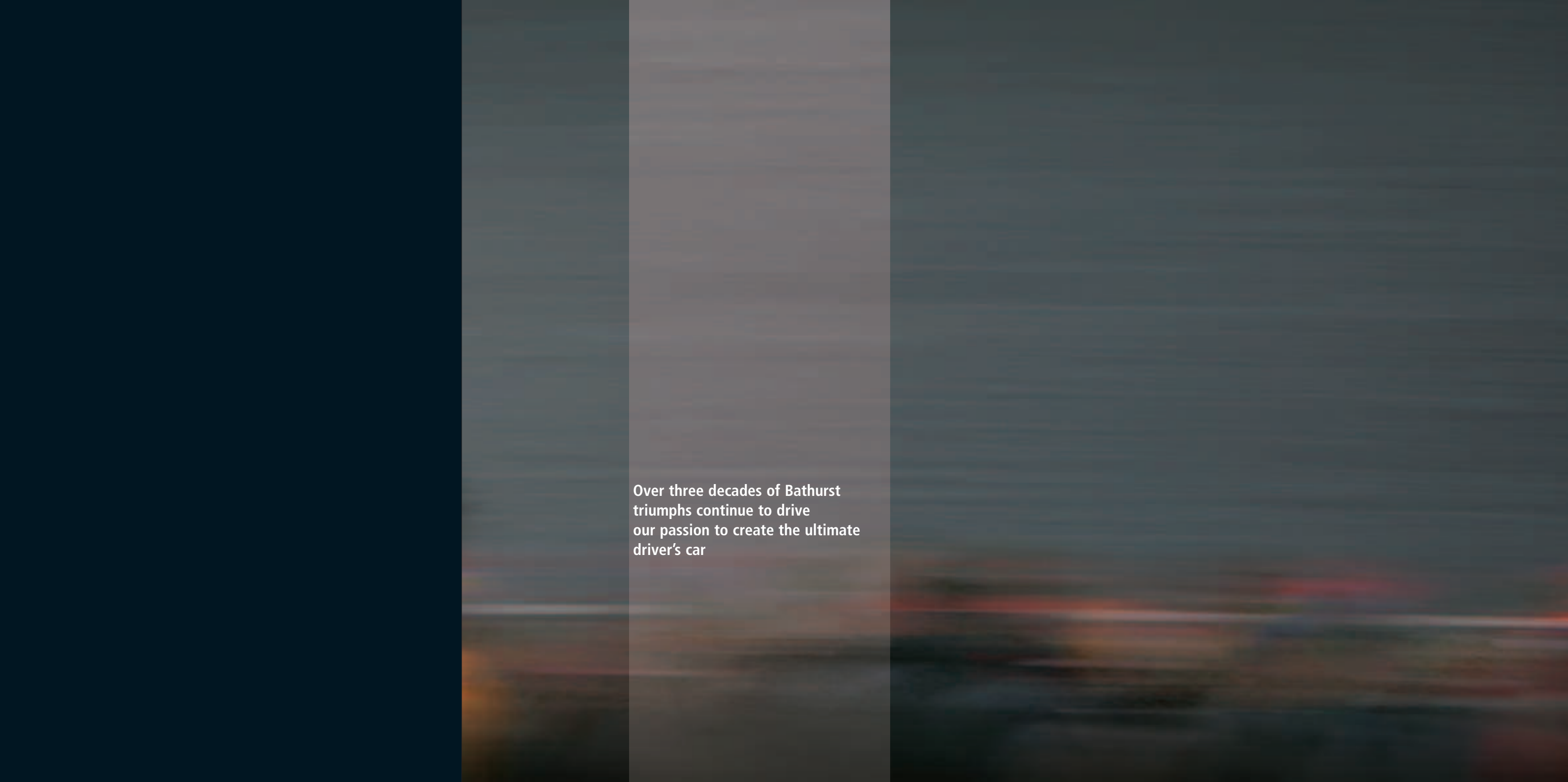


**The new Commodore is here.  
The heart of the Lion beats stronger.  
Drive it with passion.**

The new Commodore takes Holden's passion for high performance to an all new level. Driving dynamics that set Commodore apart are now even more finely-tuned to the driver. At the heart of the new Commodore is the sensational all new high performance Alloytec V6 engine.



The Lion roars loudest on the racetrack



Over three decades of Bathurst triumphs continue to drive our passion to create the ultimate driver's car

Enter a new world of performance.  
It all starts with the new Commodore Executive.  
Sharp styling. Smooth responsive handling.  
Class-redefining, all new Alloytec V6 performance.  
Driven by the demands of the driver in every sense.

Supremely responsive new Alloytec V6 engine technology with 175kW effortlessly answers the demands the road places on you.

Interactive trip computer featuring audible speed warnings, distance travelled, distance to empty and average fuel consumption helps to add certainty to your journey.

Cruise Control at your fingertips enhances fast and accurate speed adjustment and economy on long distance touring.

Dual front airbags are one of the many leading safety features that ensure your safety is a priority and provide added protection in certain severe frontal impacts.



EXECUTIVE



Superior safety. Inspired performance. Your family comes first. So must their safety. Both the Acclaim sedan and wagon provide protection against the unexpected, fully integrating an array of advanced safety features.



The new Acclaim boasts the sensational new Alloytec V6 engine.

Rear Parking Sensors (sedan only) help remove the guesswork when reverse parking.

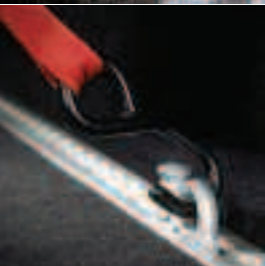
Active front seat head restraints and seatbacks are designed to reduce the risk of neck injuries or whiplash in the event of a low velocity rear impact collision.

Electronic Stability Program (sedan only) helps control under-steer and over-steer, maintain grip and safely stabilise the vehicle.

Electronic Brake Assist (sedan only) uses sensors to detect a panic brake situation and immediately add braking pressure to all wheels so that the ABS system engages to help reduce stopping distances.

New 15 inch alloy wheels add to Acclaim's stylish looks. (Steel spare)

Load tie-down rails and cargo blind on Acclaim wagon make carrying loads easy.



ACCLAIM



New generation sports technology that's born to perform. Powered by the all new high performance Alloytec 190 V6 engine, the new SV6 goes way beyond the excitement of conventional sports performance. This is performance that surpasses all expectations.

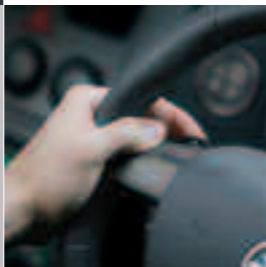


New five speed automatic transmission with Active Select assures drivers enjoy smooth, crisp almost seamless gearshifts. With paddle shift controls on the steering wheel, go from auto to manual mode shift at a touch.

Spirited driving also gains an exciting new dimension, with the addition of a six speed manual with a shorter shift throw for improved feel.

New 17 inch sports styled alloy wheels complement the aggressive looks of the SV6. (Steel spare)

Electronic Brakeforce Distribution regulates the force between the front and rear brakes to provide improved braking balance.



SV6



Awesome power. Awe-inspiring handling. The experience of SV8 power is a sensation all of its own. This goes beyond the simple thrill of V8 driving. This is the understated power of knowing that the absolute authority of 250kW is growling under the bonnet.

The high output 5.7 litre Generation III Alloy V8 engine delivers 250kW of free-flowing power.

New Electronic Throttle Control co-ordinates the driver's intentions with actions of various powertrain control components, for improved launch feel and to help maximise performance.

Six speed manual transmission enhances responsiveness in all gears for all road scenarios.

New 17 inch alloy wheels complete the powertrain package. (Steel spare)

Fingertip Cruise Control reduces effort and enhances economy on long distance touring.

The convenience of power windows, front and rear.



SV8







High output 250kW 5.7 litre Generation III Alloy V8 engine.

New striking fender vents add impact and create the ultimate performance signature for SS.

Huge 18 inch alloy wheels enhance the awesome sports presence and help get more power to the ground. (Steel spare)

Twin exhaust system complements both the blistering performance and sharp, aggressive sports styling.

Alloy faced pedals, yet another sign of Commodore's racing heritage.

New projector headlamps brightly illuminate the road improving visibility and driving confidence.

Sports Suspension completes the performance package by delivering extra agility and dynamic handling.



Pure undiluted excitement reigns supreme. This is where Commodore's heart beats loudest. This is the ultimate. Outstanding performance. Menacing power. Supreme handling. The new Commodore SS.

SS





SV6 model interior shown

Electronic driver's seat height adjust with front and rear cushion tilt for effortless achievement of your ideal driving position.

Compact disc player ensures you enjoy pure CD sound.

Sound system remote controls located on the steering wheel place the right radio station or CD track at your fingertips.

Multi function display positioned close to eye level features audio system status, gear selected and trip computer information.

Power windows and air conditioning further enhance your comfort and the pure pleasure of driving.

Feel the road in every sense. You can tell a true driver's car by the design of its interior. Once again, Commodore comes into its own. The vast array of driver-oriented instrumentation and comfort features have been designed with just one single thought in mind. To help you fully focus on the road ahead.





V6

Alloytec V6 Alloytec 190 V6 Gen III V8

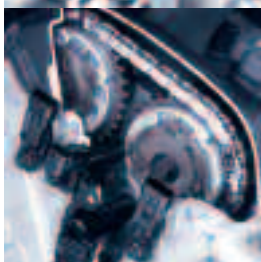
The pure sensation of driving. Revolutionary engine technology, new transmissions and more advanced safety features are all seamlessly integrated to work in perfect harmony. All of which makes the new Commodore even more finely tuned to you – the driver.

V8





**Double Overhead Camshaft** improves valve positioning and creates better fuel and air mixture flow, which in turn leads to better performance. Four valves per cylinder, two inlet and two outlet, help the engine breathe better, for greater performance. Towing and acceleration is enhanced, delivering better overall driveability.



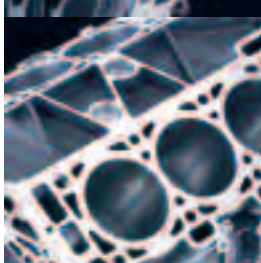
**Continuously variable valve timing.** On the Alloytec 190, continuously variable cam phasing is an active system that determines when the valves open and close. Whether it's accelerating or towing, the valves are continuously adjusted to best meet the driver requirements at that moment. On the Alloytec 175 the camshaft phasing is on the intake valve.



**New variable intake manifold for outstanding performance and driveability.** On the Alloytec 190, the variable intake manifold changes the plenum volume to assist resonance tuning of the inlet flow. At lower engine speeds cylinder charging is boosted to provide maximum torque. At higher engine speeds ram air cylinder charging occurs for increased power.



**Electronic Throttle Control** co-ordinates the driver's intentions with actions of various powertrain control components, helping maximise performance and optimise fuel consumption.



**New alloy construction for performance and strength.** The alloy construction means that not only is the engine lighter, but it can also withstand higher combustion temperatures and that means efficiency and lower exhaust emissions\*.



**Alloytec 190**

3.6 litres  
Lightweight, alloy construction  
190kW of power at 6500rpm  
340Nm of torque at 3200rpm

**Alloytec 175**

3.6 litres  
Lightweight, alloy construction  
175kW of power at 6000rpm  
320Nm of torque at 2800rpm

# V6

# ALLOYTEC



The passion of driving has found a new expression. One of the most sophisticated and advanced production engines ever manufactured in Australia, the all new Alloytec V6 delivers exhilarating performance. It is a world-class engine and Commodore drivers will be able to enjoy the responsiveness and outstanding driveability of this new automotive technology for years to come. Available in two high performance variants, both the Alloytec 175 and the Alloytec 190 bring new levels of power and torque.\*

\*Compared with the ECOTEC 3.8 litre V6

**V6 Transmissions**  
Commodore drivers now have some great choices to make the most of the all new high performance Alloytec V6 engine. Designed for Australian conditions this is the latest transmission technology, fully attuned to the driver. The Alloytec 190 is available with a new five speed automatic transmission with Active Select. Exclusive to the new SV6 is a new six speed manual. The Alloytec 175 is teamed with a refined four speed automatic.

**Five speed automatic transmission with Active Select**  
The all new high performance Alloytec 190 V6 engine is available with a new five speed automatic transmission with Active Select on the new SV6. This assures drivers enjoy smooth, crisp and almost seamless gear shifts. Active Select is activated by pressing the 'AS' button in the centre console. It provides the option of automatic or manual transmission shift modes. Paddle shift controls on the steering wheel then allow drivers to change from automatic to manual at a touch.

**New six speed manual transmission**  
The new six speed manual transmission is available on the new SV6. Designed with a shorter throw for improved feel, spirited driving gains a new dimension. With new ratios that give an ideal first gear launch feel and lower cruising revs in sixth, this is the choice for those who prefer a 'hands-on' experience.

**Four speed automatic transmission**  
The Holden four speed automatic transmission has new software and a new control module which allows the transmission and engine to communicate at a faster rate. This gives drivers new levels of refinement, with consistent shifts and enhanced smoothness.

**V8 Transmissions**  
Choose from either a 4 speed automatic transmission or 6 speed manual with your V8 engine. Four speed automatic transmission provides improved gear shift feel. Six speed manual now provides a new final drive ratio for an improved launch feel.

# GEN III ALLOY V8

The power of Commodore's driving passion culminates in Holden's high output 5.7 litre Generation III Alloy V8. Supremely powerful, yet surprisingly lightweight, this V8 engine completely dominates the road, delivering free-flowing power whenever it is demanded.

250kW of power and 470Nm of torque produce exceptional performance and towing capabilities.

New Electronic Throttle Control co-ordinates the driver's intentions with actions of various powertrain control components, for improved launch feel and to help maximise performance.

Aluminum alloy construction creates a light weight engine for a smoother ride.

Less weight in the front end allows more precise steering response, which translates to more agile handling.

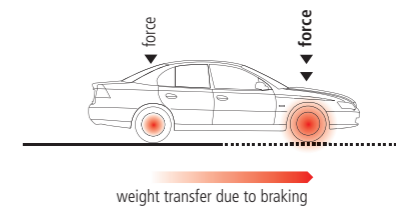
One piece induction system made from composite materials for smooth airflow and superior breathing.



# SAFETY

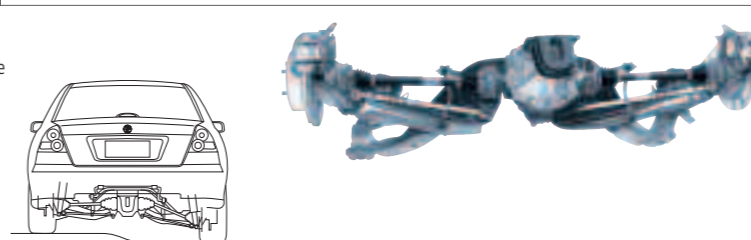
Performance demands uncompromising safety. Ultimately safety is always a priority. Along with enhancements to performance, more than ever, Commodore puts peace of mind and safety first. So you can drive on with added confidence.

Electronic Brakeforce Distribution (EBD) regulates the force between the front and rear brakes to provide improved braking balance. EBD is standard across the Commodore range.

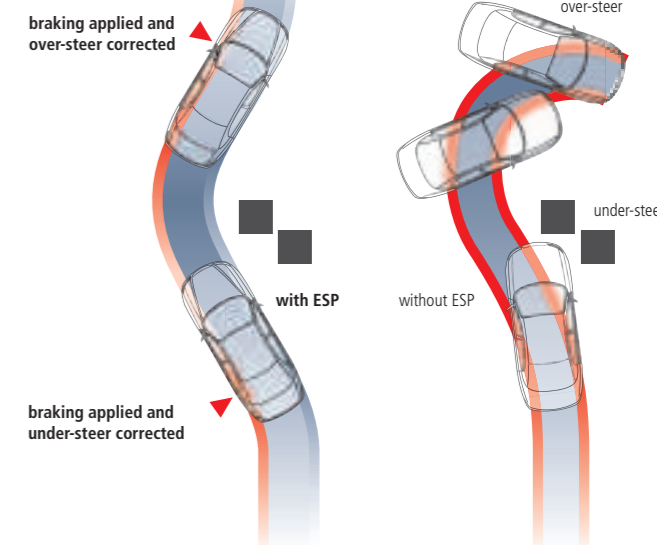


Full-size driver and passenger airbags\* for improved protection in a frontal impact, and driver and front passenger side impact airbags\* help protect head, neck and chest in a side collision.

Control Link Independent Rear Suspension, with dual control arms, helps keep Commodore stable on the road at all times. This is particularly useful in challenging cornering situations.



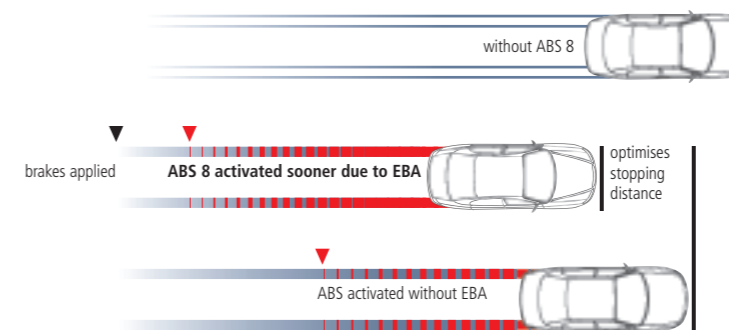
On selected Alloytec models, Electronic Stability Program (ESP) helps control under-steer and over-steer, to maintain grip and safely stabilise the vehicle.



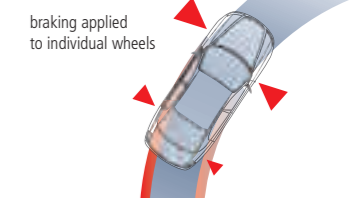
ABS 8 (on Alloytec models) technology helps to optimise stopping distances. Improved Traction Control reduces slip of driven wheels by using engine and brake control. This helps maintain grip in difficult driving conditions.

On selected models, Electronic Brake Assist uses sensors to detect a panic situation and immediately add braking pressure to all wheels so the ABS system reduces stopping distances.

Featured on Executive, SV6, SS and SV8, the Brake Assist system provides additional braking assistance by allowing the driver to reach the ABS threshold sooner and therefore help reduce stopping distances.



Corner Brake Control (CBC) During heavy braking on corners the CBC function is activated on Alloytec models with ESP. CBC senses different wheel rotational speeds and co-ordinates the brakes as they are applied to individual wheels. This helps to ensure vehicle stability is maintained.



\* Driver and passenger front airbags will inflate only if car is involved in certain severe frontal collisions. Airbags form part of the Supplemental Restraint System (SRS) as they assist, but do not replace, safety offered by seatbelts.  
 # Side impact airbags will deploy and offer protection in some, but not all, severe side impacts. Side impact airbags are available on selected models.

## ClubSport



01



02



03



04

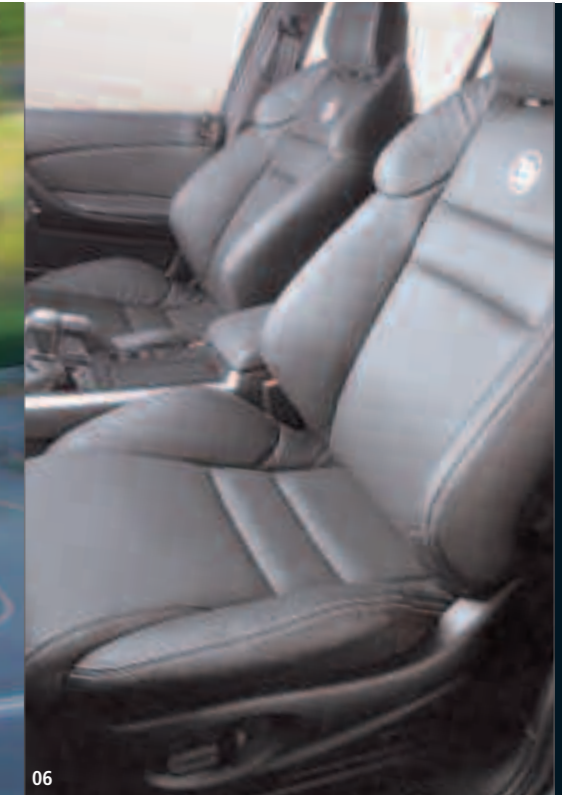
- 01 HSV ClubSport
- 02 The HSV exclusive LS2 6 Litre 297kW 530Nm Power Plant
- 03 Exclusive HSV steering wheel and instrumentation with single-zone electronic climate control. Dual front and side impact airbags. Dual front cup holders
- 04 Unique HSV styling with 297kW badge
- 05 HSV ClubSport R8
- 06 Full leather performance seats in Anthracite with micro-perforated inserts and silver stitching
- 07 HSV ClubSport R8 19" x 8" alloy wheel in Chrome Shadow. Shown with optional AP Braking System
- 08 HSV ClubSport R8 style front fascia including deep, wide-set, black driving light surrounds which flow from the outer headlamp line to create a typically aggressive HSV appearance
- 09 HSV-unique fender vents add to the aggression factor and are finished in body colour with black mesh and an inbuilt repeater lamp
- 10 Sports-style centre instrument Binnacle with oil gauge and volt meter. Eight-way electrically adjustable seat. The driver cockpit – everything at your fingertips including electronic climate control and short shifter (manual)

**HSV ClubSport** Now with the exclusive 6.0Litre LS2 297kW Corvette inspired power plant, Touring Suspension, Performance Brakes, 19" Alloy Wheels in Billet Silver. Imagine walking up to it. Dry mouth. Sweaty Palms. And you haven't even turned it on yet. **HSV ClubSport R8** The Adonis of track-inspired performance. Premium 4 piston brake package, Performance Leather Seats and Performance Suspension. And that's just the beginning of the powerful story. Insert the key. Sit back, take a deep breath. Pause. Now turn it on.

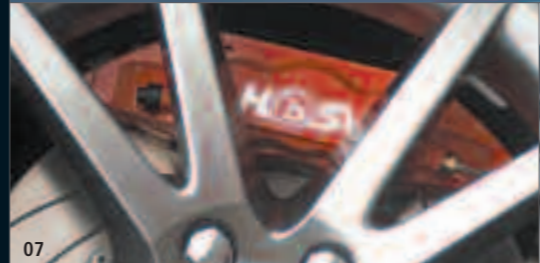
## ClubSport R8



05



06



07



08



09



10

Leave the every day behind with Holden By Design. Individualise your Commodore with an extensive range of enhancements and accessories designed to express your sense of style and pride. Explore all the possibilities at [www.holden.com.au/holdenbydesign](http://www.holden.com.au/holdenbydesign) and [www.holden.com.au/genuineaccessories](http://www.holden.com.au/genuineaccessories)



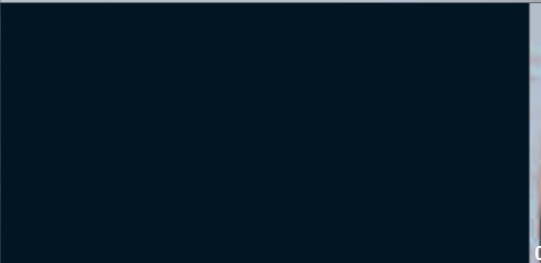
01



03



02



04

- 01 HBD SS type spoiler with rear mounted stop lamp
- 02 HBD front spoiler (available with HBD lower bodykit only)
- 03 HBD lower bodykit, S type spoiler, and exhaust extension
- 04 Protection up front with stylish, practical bonnet and headlight protectors
- 05 16" x 7" S series alloy wheel
- 06 17" x 8" W series alloy wheel
- 07 17" x 8" I series alloy wheel
- 08 17" x 8" Y series alloy wheel
- 09 18" x 8" N series alloy wheel
- 10 18" x 8" J series alloy wheel
- 11 18" x 8" L series premium machined face alloy wheel
- 12 Brakes for drivers who enjoy their driving and demand more. HBD performance brakes feature larger 320mm, 10 slot front rotors with eye-catching, Holden branded red calipers and ventilated rear discs (for V8 models with 17" or larger wheels only)
- 13 Red leather-wrapped sports steering wheel, gear selector and handbrake (also available in Anthracite – Silver Foil)
- 14 HBD DVD Player with 7" high resolution, LCD screen. DVD, CD and MP3 compatible. Includes remote control, infra-red headphones and games console input

- 15 HBD upgraded audio system from Blaupunkt, comprising power amplifier (4 x 50W RMS), 4 x ultraflat 2 way component speakers (70W RMS) and optional powered sub woofer (140W)
- 16 31 litre, 12V/240V portable refrigerator boasting 41 can capacity and quick chill function
- 17 Organise your belongings on the move. A practical, good looking and collapsible storage solution
- 18 Stylish, practical floor mats complement and protect your new Holden
- 19 Stylish and sporty floor mats for the enthusiast in you
- 20 Expand your new Holden's cargo carrying capacity with a genuine Holden Roof Rack
- 21 Fully integrated, hands-free 'Bluetooth' connectivity for your compatible mobile phone allows you to make and answer calls at the touch of a button (subject to mobile phone capability)



05



09



10



06



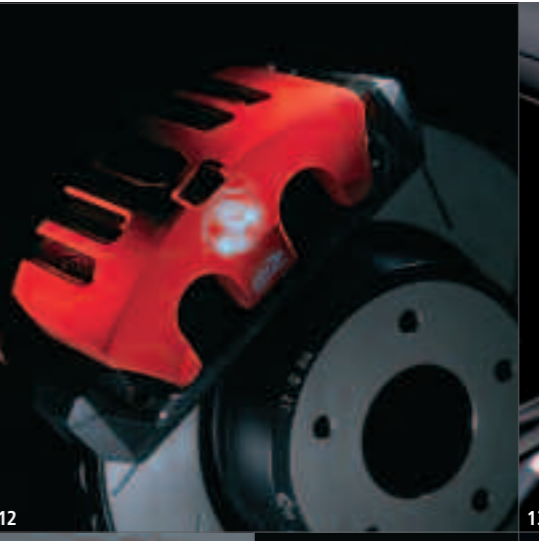
11



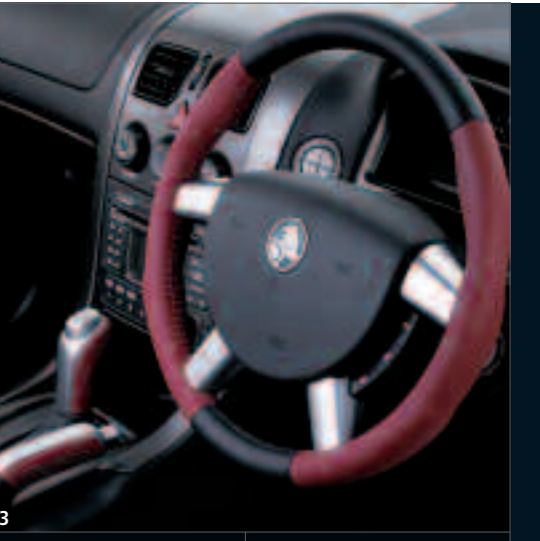
07



08



12



13



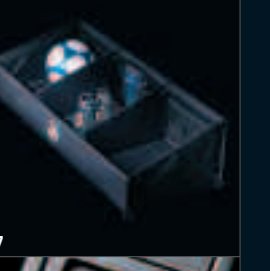
14



15



16



17



18



19



20



21





## Specifications

	175kW, 3.6 litre high performance Alloytec V6 engine	190kW, 3.6 litre high performance Alloytec190 V6 engine	250kW, 5.7 Litre high output Generation III Alloy V8 engine		
<b>Engine</b>	3.6L 60-degree Double Overhead Cam V6 with 4 valves per cylinder. Sequential fuel injection. High energy, distributorless ignition. Twin knock control sensors with individual cylinder adaptive control. Onboard diagnostics. Electric cooling fan. Stainless steel exhaust		'V' Configuration. High flow, low restriction air intake. OHV design with cross flow cylinder heads. Sequential fuel injection. High energy, distributorless, ignition. Twin knock control sensors. Onboard diagnostics. Electric cooling fan. Stainless steel exhaust		
	Electronic throttle control. Aluminium alloy block and cylinder heads. Aluminium oil pan. Cross-bolted main bearings. 6-bolt				
	Low restriction cold air intake	Low restriction air intake with acoustic dampening chambers	High flow, low restriction air intake		
	Continuously variable camshaft phasing for inlet cams	Continuously variable camshaft phasing for inlet and exhaust cams. Variable intake manifold			
			High Performance dual exhaust		
	Coil-on-plug		Coil-per-cylinder		
<b>Capacity (cc)</b>	3565		5665		
<b>Compression ratio (:1)</b>	10.2		10.1		
<b>Power (ECE, kW)</b>	175 @ 6000rpm		250 @ 5600rpm		
<b>Torque (ECE, Nm)</b>	320 @ 2800rpm		470 @ 4800rpm		
<b>Gear ratios (:1)</b>	4sp Auto	6sp Man	5sp AS	6sp Man	4sp Auto
	1st	3.06	4.48	3.42	2.66
	2nd	1.63	2.58	2.21	1.78
	3rd	1.00	1.63	1.60	1.30
	4th	0.70	1.19	1.00	1.00
	5th		1.00	0.75	0.74
	6th		0.75		0.50
	Final drive ratio	3.08	2.87	2.87	3.73
					3.07
<b>Recommended petrol octane rating</b>	91 (ULP) Petrol tank capacity (L) 75				
<b>Brakes</b>	Four wheel disc. Ventilated front disc and finned caliper				
<b>Anti-lock Braking System (ABS)</b>	4 wheel speed sensors, 3 channel				
<b>Traction Control (TCS)</b>	(Available: see feature list) 4 wheel speed sensors, 4 channel. When sensors detect imminent rear wheel spin, engine torque is reduced. If one wheel is about to spin, braking is applied to transfer torque to wheel with better traction				
<b>Electronic Stability Program (ESP)</b>	(Available: see feature list) 4 wheel speed sensors, 1 steering angle sensor, 1 yaw sensor, 1 lateral g-sensor, 4 channel. ESP assists the driver in emergency situations by providing correction to the intended vehicle path, which may help the driver to avoid obstacles and reduce slides. This is accomplished via individual brake application and engine torque management control				
<b>Suspension</b>	Front: MacPherson strut. Direct acting stabiliser bar. Progressive rate coil springs Rear: Control-Link Independent Rear Suspension (IRS). Semi-trailing arm. Progressive rate miniblock coil springs. Stabiliser bar				
<b>Sports suspension</b>	Front: Firmer spring rate. Revised stabiliser bar diameter. Reduced ride height Rear: Firmer spring rate. Gas pressure dampers				
<b>Steering</b>	Variable ratio rack and pinion				
<b>Track (mm)</b>	Front: 1569		Rear: 1577		
<b>Turn circle (kerb to kerb, m)</b>	Sedan: 11.0		Wagon: 11.5		
<b>Wheelbase (mm)</b>	Sedan: 2789		Wagon: 2939		
<b>Exterior dimensions (mm)</b>	Length	Width (excl mirrors)	Height	Ground clearance	
	Executive Sedan	4876	1842	1440	114
	Wagon	5033	1847	1527	117
<b>Interior dimensions (mm)</b>	Leg	Shoulder	Head	Hip	
	Front	1071	1515	992 (Sedan)	1440
				1007 (Wagon)	
	Rear	986	1522	966 (Sedan)	1515
				1071 (Wagon)	
<b>Cargo volume (L)</b>	Sedan: 465 Rear seat up (to top of seat back). Wagon: 2752 Rear seat folded down				
<b>Kerb weight (kg) Man/Auto</b> (Est. inc. A/C and all fluids)	Executive*(V6, Auto)	Acclaim (V6, Auto)	SV8 (V8, Man)	SV6 (V6, Man)	SS (V8, Man)
	Sedan	1568	1574	1639	1602
	Wagon	1640 (V6, Auto)	1647 (V6, Auto)		1654
<b>Towing (kg)</b>	Holden approved 1200, 1600 and 2100 towing equipment is available. See your Holden Dealer for details				
<b>Service</b>	V6 - 3000km (at no cost) inspection, 15,000km then every 15,000km or 12 months, whichever comes first V8 - 3000km (at no cost) inspection. 10,000km then every 10,000km or 6 months, whichever comes first. Maintenance-free, long life, accessory drive belt with automatic tensioner. Dual belt on V8. Holden Dealer 'Tech 2' computerised analysis available for engine management system				

Vehicle Weights based on pre-production data. All fluid levels at their nominated capacity. \*Includes optional A/C

## There are rewards to buying a Holden that go beyond the joy of driving one

### Easy Purchase Options

#### Finance

**SmartChoices** Provided by GMAC Financial Services is an array of automotive finance products designed to help the dream of driving a new Holden become a reality. Just select the product, term and payment structure that best suits your lifestyle and your Holden Dealer can provide more information.

#### Insurance

Holden **SmartCare** Insurance provided by GMAC Financial Services offers a range of competitively priced insurance products, providing tailor-made protection, at whatever level of cover you need. For more information, call the SmartCare hotline on 1800 060 094.

#### Leasing

**Holden Leasing** Whatever the size of your fleet, Holden Leasing offers a range of flexible, value driven, specialist fleet leasing products. Years of experience means they can provide the best solution for you. Call Holden Leasing on 03 9696 7400 for more information.

#### Holden MasterCard

**Holden MasterCard** can assist you to get into a new Holden sooner. 10% of credit purchases on this card goes towards a Rebate of up to \$3,000 on your new Holden.<sup>1</sup> That's a \$1 saving towards a new Holden for every \$10 spent. There are a range of extra features including up to 45 days interest free<sup>2</sup> on credit purchases and a competitive interest rate. Apply<sup>3</sup> online at [www.holden.com.au/mastercard](http://www.holden.com.au/mastercard) or call Holden MasterCard's 24 hour help line 1300 650 696.

### Ownership Benefits

#### Service

**Holden Service** With over 300 Holden Dealers, Holden can supply an enviable level of customer care. Our Service Network is one of the largest in the country. Only Holden Dealership technicians have access to regular Holden factory training.

#### Warranty

**Holden Warranty** Every new Holden comes with a New Vehicle Warranty, covering your Holden for 3 years or 100,000 kilometres, whichever comes first. This factory backed warranty covers items including the engine, transmission, interior and exterior components. For support after that, a Holden Extended Warranty can be purchased for vehicles that have travelled less than 100,000 kilometres and prior to the vehicle being registered for 3 years from date of first registration. Refer to your owner's handbook or see your Holden Dealer for full terms, conditions and exclusions.

#### Roadside Assistance

**24 Hour Roadside Assistance** Provided for the first 3 years of your new Holden's life<sup>4</sup>, Holden Roadside Assistance is one of Australia's most comprehensive assistance packages with over 3000 Roadside Assistance patrols nationwide.<sup>5</sup> There to help with even the smallest service, the toll-free Roadside Assistance hotline is always open, 1800 817 100.

**Roadside Ultra Assistance** Available as an optional upgrade for a period of 3 years from the first date of registration for an additional fee. Roadside Ultra provides additional benefits, over and above those supplied by our standard Roadside Assistance program. In certain circumstances it covers accommodation, alternative transport, rental car, accident assistance, Australia-wide vehicle recovery and more.<sup>6</sup> For more information call 1800 645 668, 8am to 8pm EST.

#### Club Holden

Owning a Holden has another great benefit – Club Holden. It's a free online service that provides exclusive vehicle and owner information tailored to your Holden. Register today at [www.club.holden.com.au](http://www.club.holden.com.au).<sup>7</sup>

**For more information contact  
Holden Customer Assistance on 1800 033 349  
Monday to Friday 8am to 7pm or Saturday 9am to 1pm EST  
or visit [www.holden.com.au](http://www.holden.com.au)**

<sup>1</sup> A total of \$3000 in the form of Holden Card 'Core' Rebate (plus additional 'Bonus Rebate' accumulated via the Partner Program) accrued over a maximum of five years may be applied per eligible vehicle purchased. Vehicle sales for which a fleet allowance is paid are not eligible for Holden MasterCard Rebate. Earning and redemption of Rebate towards a new Holden is subject to the Holden Card Rebate Program Rules. <sup>2</sup> The interest-free period applies where the card account is fully paid by the due date each month. <sup>3</sup> Applications are subject to Westpac's normal lending criteria. <sup>4</sup> From date of first registration. <sup>5</sup> In remote or sparsely populated areas you may experience delay in obtaining Roadside Assistance. Refer to the Roadside Assistance brochure in your glove box for full terms and conditions of this service. <sup>6</sup> See the Roadside Assistance brochure in your glove box for full terms and conditions of this service. <sup>7</sup> Most Holden vehicles from 1997 can be registered for Club Holden.

## Exterior colours



Heron White



Redhot



Glaze Metallic  
(available September 2005)



Quicksilver Metallic



Vespers Mica



Barbados Metallic



Martini Mica



Shanghai Mica



Odyssey Metallic



Phantom Mica



Impulse Metallic



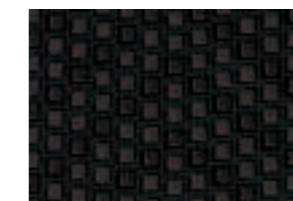
Turismo Mica

## Interior trims

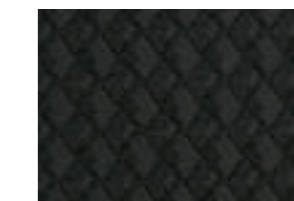
		Exterior colours											
		Heron White	Redhot	Glaze Metallic	Quicksilver Metallic	Barbados Metallic	Martini Mica	Shanghai Mica	Vespers Mica	Odyssey Metallic	Phantom Mica	Impulse Metallic	Turismo Mica
Model	Trim												
Executive	Executive Neutral Pewter cloth	•	•	•	•	•	•	•	•	•			
Acclaim	Acclaim Neutral Pewter cloth	•	•	•	•	•	•	•	•	•			
SV6	Anthracite Black cloth	•			•								•
	Redhot cloth		•									•	
	Bermuda cloth											•	
SV8	Anthracite Black leather	•	•		•						•	•	•
	Redhot cloth		•								•		
	Bermuda cloth										•		
	Anthracite Black leather	•	•		•						•	•	•

### SS interior trim options

	Exterior colour	Leather trim	Cloth trim	Dials
	Quicksilver	Anthracite Black	Anthracite Black	Silver Grey
		Redhot	Anthracite Black	Redhot
	Heron White	Anthracite Black	Anthracite Black	Silver Grey
		Bermuda Blue		Bermuda Blue
	Redhot	Redhot	Redhot	Redhot
		Anthracite Black		Redhot
	Phantom	Redhot	Redhot	Redhot
		Anthracite Black		Redhot
	Impulse	Bermuda Blue	Bermuda Blue	Bermuda Blue
		Anthracite Black		Bermuda Blue
	Turismo	Anthracite Black	Anthracite Black	Silver Grey



Neutral Pewter cloth (Executive)



Neutral Pewter cloth (Acclaim)



Bermuda Blue cloth (SV6, SV8 and SS)



Redhot cloth (SV6, SV8 and SS)



Anthracite Black cloth (SV6, SV8 and SS)



Bermuda leather (SS)



Redhot leather (SS)



Anthracite Black leather (SV6, SV8 and SS)  
(SS stitching not applicable to SV6 or SV8 models)

A word about this catalogue. We have tried to make this catalogue as comprehensive and factual as possible. However, since the time of printing some of the information you'll find here may have been updated. Also, some of the equipment shown or described through this catalogue may have been changed and / or is available at extra cost. Further, GM Holden Ltd, reserves the right to make changes at any time without notice, in prices, colours, materials, equipment and models. Your Holden Dealer has details, and before ordering, you should ask them to bring you up to date. No Holden Dealer or other person is authorised or permitted to give or make any statement, assertion or undertaking in relation to the quality, performance characteristics, descriptions or fitness for any purpose of any Holden product which is at variance with any written statement, assertion or undertaking on any of these subjects given or made by GM Holden Ltd ABN 84 006 893 232 in its published sales literature, and GM Holden Ltd does not accept any liability for any such unauthorised action. GM Holden Ltd has authorised dealers in many parts of Australia for the sale of service parts and the provision of service to owners of Holden's products. Every endeavour is made to ensure that such dealers carry adequate stocks of service parts, but GM Holden Ltd doesn't make any promise other than that contained in the New Vehicle Warranty given by GM Holden Ltd that such parts or service facilities will be available at any specific location or at any particular time. Express warranties offered for Holden products are subject to the conditions set out in all vehicle handbooks. Details also available from GM Holden Ltd on request. Copyright GM Holden Ltd. August 2005. emeryfrost COMHSV0605 AD11739

Anthracite leather trim is optional at an additional cost on Commodore SV6, SV8 and Commodore SS. Redhot and Bermuda leather trim available as an option on SS at an additional cost. Side impact airbag mandatory with leather trim. Variations between the colours shown and actual paint colours/interior trim colours may occur due to the printing process. Actual vehicle colours may appear different under certain light conditions. Metallic or Mica paints are available at an additional cost. Trim patterns are not to scale. Indicative only.