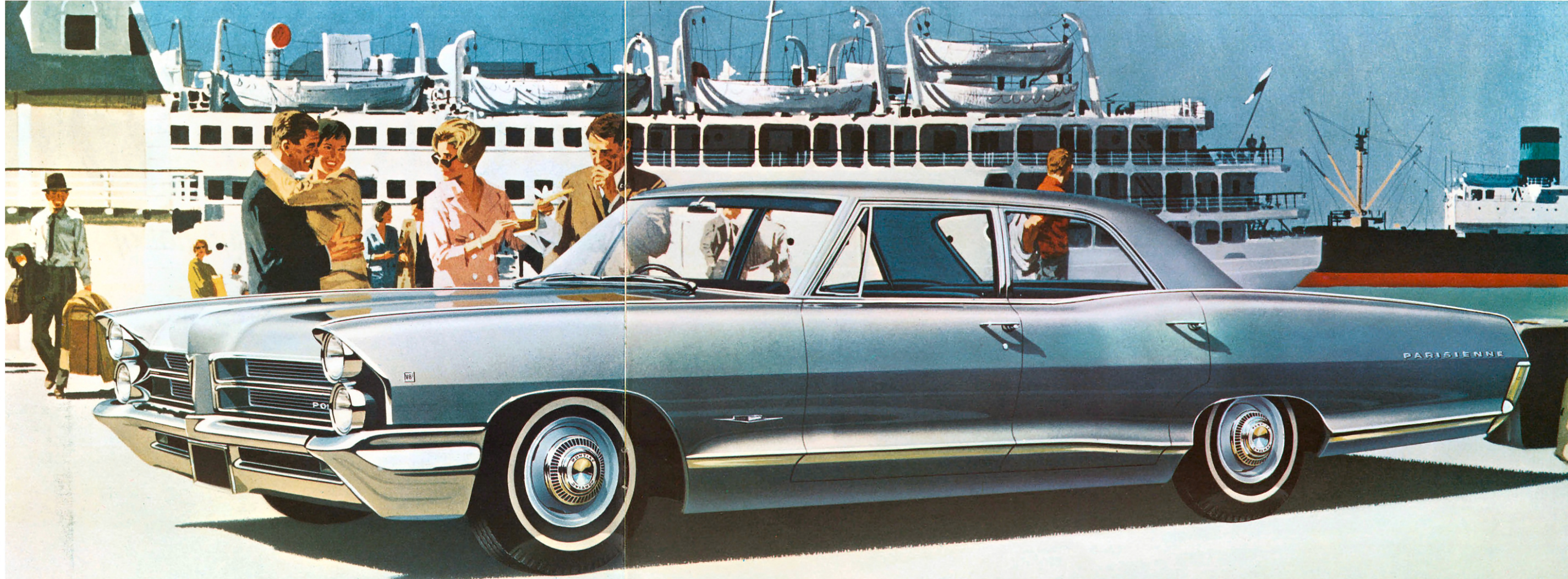


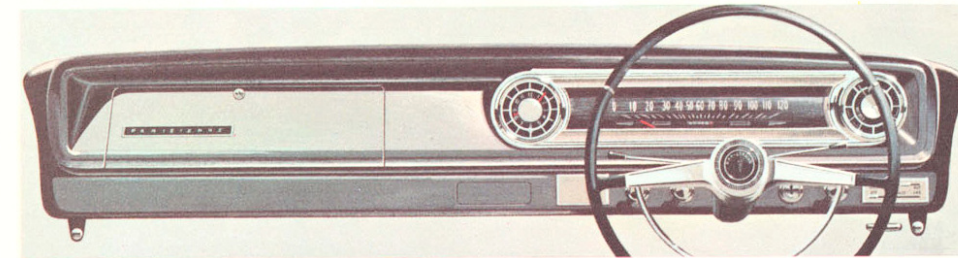
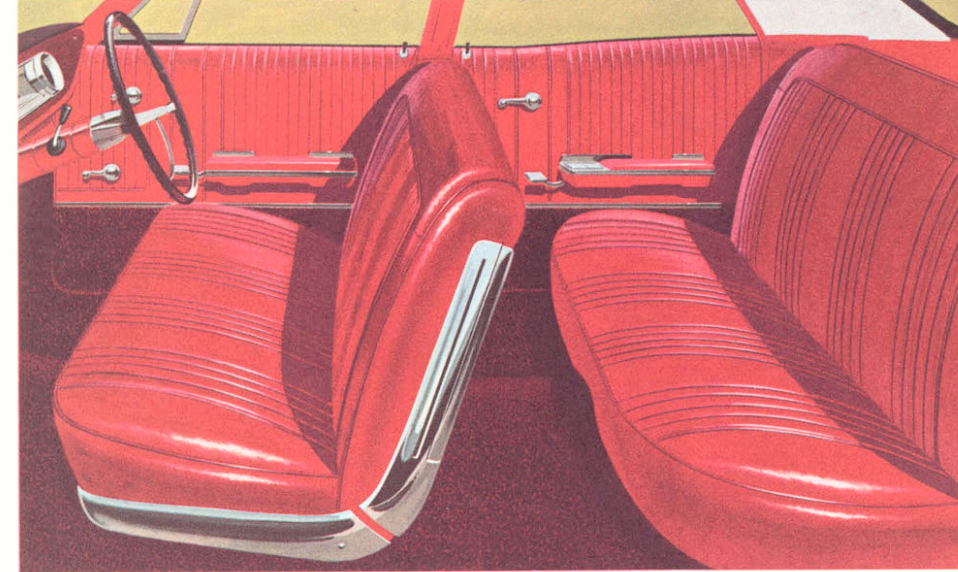
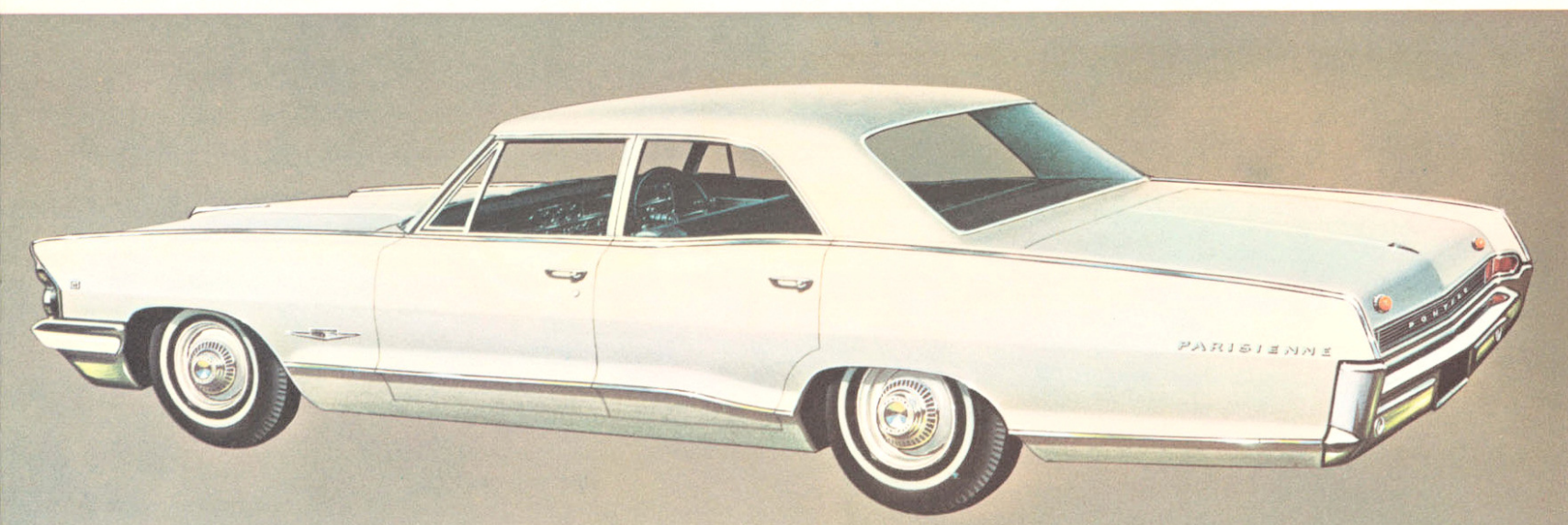
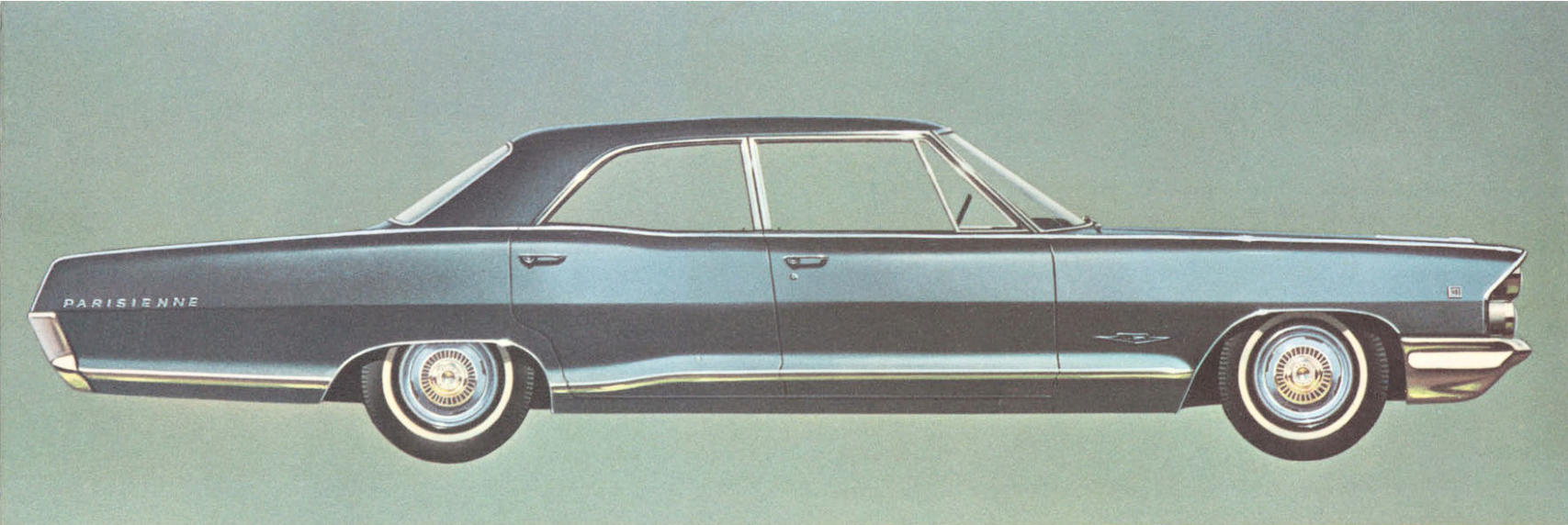
Pontiac

symbol of success...hallmark of quality

This is the year luxury motoring takes a big leap forward. This is the year that Pontiac, for the first time in Australia, introduces not one, but two magnificent new models: the superb Parisienne Sedan and its classic companion, the brilliant performing Parisienne Sports Sedan. Both carry the Pontiac tradition of superior styling, luxurious comfort and matchless performance to a new pinnacle of excellence. They whisper prestige and distinction with every sleek curve of their striking new design. Their peerless quality is also reflected in their many exciting new engineering features. Outstanding among these is the Pontiac 'Wide-Track': a wider-than-ever wheel track, which provides exceptional roadholding and handling. This is just one reason why in these two new models you enjoy smoother, more satisfying performance than even Pontiac has offered before.



New Parisienne Sedan



New Parisienne Sedan

Sheer beauty of styling alone is sufficient to put the new Pontiac Parisienne Sedan in a class of its own. Its design is totally new with distinction that turns heads wherever you go. The sleek body is longer, lower, wider: elegant authority in every line. The commanding profile is unbroken from the massive wraparound bumper to the dashing rear end flair, save for a sweeping accent of stainless steel. Note the graceful curve of the doors and windows: a new design refinement that adds considerably to the spaciousness you enjoy in the Parisienne.

The doors are wider and sills lower to make entering and leaving even easier than before. Crisp new grille styling and slimmer windshield pillars contribute to the overall impression of exceptional grace and power. A lustrous finish to the Parisienne Sedan's flawless styling is provided by Magic-Mirror acrylic lacquer, in a wide range of rich metallic colours. It retains its sheen with next to no care.

Even those accustomed to Pontiac's high standard of luxury will be pleasantly surprised by the superb interior of the new Parisienne Sedan. The curved doors and side windows, and a flatter, wider floor, mean there is more room than ever for six people to spread themselves in plush comfort on soft foam padded seats, impeccably tailored in genuine leather. And the cavernous luggage compartment will take all their luggage with plenty of room to spare. Deep-pile 'wall-to-wall' carpet cushions your feet.

The completely new instrument panel is the ultimate in clarity, convenience, and modern design. Appointments include an electric clock, cigar lighter, and lock-up glove box. Heater, demister, windscreen washers, crank-operated ventipanes, and armrests on all doors are among the abundance of other refinements that make Pontiac motoring such a uniquely satisfying and relaxing experience.

The new Parisienne Sedan further enhances Pontiac's reputation for effortless handling and masterly performance. At the wheel you command the very finest engineering achievements. The Pontiac Strato-Flash 195 h.p. V8 engine to instantly meet any demand for power with ample in reserve. Powerglide automatic transmission so quick, silky-smooth, and immediately responsive. Power steering that responds to the lightest touch, yet still gives you that positive 'feel' of the road. And power brakes, to give safe, sure braking the second you need it. They're self-adjusting, which saves you on maintenance. A serenely smooth, stable ride on any surface, at any speed, results from Pontiac's new 'Wide-Track' (2 in. wider at the front, 3 ins. at the rear) and improved suspension. Four husky coil springs soak up bumps like a sponge . . . never squeak, never wear out. This Parisienne proves in performance, as well as appearance and comfort, that Pontiac has once again created a new definition of luxury motoring.



New Parisienne Sports Sedan

For those who seek really scintillating performance, brilliant pillarless styling, as well as luxurious and large passenger space, Pontiac offers the Parisienne Sports Sedan. For the first time it is being assembled in Australia, resulting in a greatly reduced price. It is powered by Pontiac's potent Astro-Flash 230 h.p. V8 engine. Teamed with Powerglide automatic transmission, its surging power gives this aristocrat of sedans acceleration that even the cream of sportscars find hard to match. Yet in the soothing calm of the Pontiac interior you can barely hear the purr of this dynamic engine. Exterior styling, too, has a sporting touch. A sharper curve to the roofline, the absence of central side pillars, add a dashing flair to the Parisienne Sports Sedan's design. The interior is upholstered in high quality imported fabric of outstanding comfort and durability. Floor covering is in tasteful imported carpet. In addition to its many striking individual features the Sports Sedan has all the interior luxury, spaciousness and refinement of its graceful companion, the Parisienne Sedan. Whichever of these two unusually fine cars you choose, one thing is certain: you will enjoy motoring of unsurpassed ease and pleasure and a degree of distinction that only another Pontiac owner can equal.

Engines

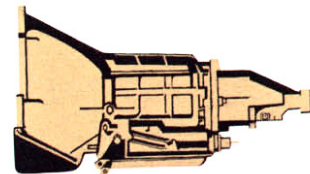
1. Strato-Flash 195 h.p. 283 cu. in. V8. This rugged power-unit of the Parisienne Sedan has many outstanding engineering refinements. A 2-barrel carburettor ensures excellent performance with the utmost economy: a heavy-duty 5-bearing crankshaft adds to the engine's smoothness and long life: hydraulic valve lifters ensure engine quietness: and precision cast cylinder block and heads assist high cooling efficiency and engine rigidity. Full-flow oil filter and a new oil-wetted paper element-type air cleaner also contribute to maximum engine efficiency.



2. Astro-Flame 230 h.p. 327 cu. in. V8. This is the source of the majestic power of the Pontiac Parisienne Sports Sedan. It obtains its ultra-high performance from special cylinder heads, 4-barrel carburettor, aluminium alloy main and connecting rod bearings, special alloy machined fly wheel, heavy-duty 5-bearing crankshaft, thermostatically-controlled fan. The Astro-Flame features a full-flow oil filter, new oil-wetted paper element-type air cleaner, and hydraulic valve lifters.

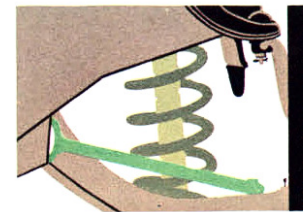
Transmission

Pontiac's Powerglide is renowned for its exceptional smoothness, quietness and dependability, and its ability to effortlessly handle any driving situation. Selector sequence in L-D-N-R-PARK. The selector quadrant is illuminated to permit instant operation at night. The new Pontiacs gain extra quietness and efficiency from a new strong, but light in weight, rear axle.



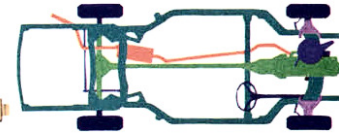
Suspension

Pontiac's great stability and smooth ride are a revelation thanks to an improved suspension system and Pontiac's new 'Wide-Track'. The increase in wheel track to 62.5" front and 62.4" rear makes Pontiac sure-footed on any surface and around corners at any speed. The massive full coil suspension helps provide the quietest, smoothest ride you could wish for.



Chassis

The new Pontiac perimeter frame has great strength and inbuilt rigidity yet is surprisingly light. It extends to the edges of the body, giving more room for passengers and allowing a much flatter floor with reduced transmission 'hump', providing more leg room than ever. Large rubber mountings insulate Pontiac's body from road shocks.



Body by Fisher

The Body-by-Fisher nameplate on the imported body panels is your absolute assurance of the finest automobile body design and construction. Longer, wider and lower, the body is a particularly rugged structure with reinforced



side rocker panels. It has a sturdy one-piece floor pan for extra strength. Extensive body insulation eliminates road noise and winter weather draughts. Seat belt anchor points are standard equipment on both models.

Specifications

Engines

Strato-Flash V8. Bore 3.875 ins. Stroke 3 ins. Capacity 283 cu. ins. Compression ratio 9.25:1. Max. horsepower, 195 @ 4,800 R.P.M. Max. torque 285 lb. ft. @ 2,400 R.P.M. RAC rating 48 h.p. Astro-Flame V8. Bore 4.001 ins. Stroke 3.250 ins. Capacity 327 cu. ins. Compression ratio 8.75:1. Max. horsepower, 230 @ 4,400 R.P.M. Max. torque 330 lb. ft. @ 2,800 R.P.M. RAC rating 51 h.p.

Engine Features

90°-V8 o.h.v. engine. 5-bearing crankshaft. Hydraulic valve lifters. Aluminium pistons. Positive crankcase ventilation. Full-pressure lubrication system. Full-flow oil filter. Automatic choke.

Extra features: Astro-Flame 327.

Special cylinder heads. Aluminium main and connecting rod bearings. Special machined flywheel. Thermostatically controlled fan.

Fuel System

Fuel tank capacity 16.6 imp. gallons. 283 engine features 2-barrel carburettor. 327 engine, a 4-barrel carburettor. Oil-wetted paper element air cleaner.

Cooling System

Pressurised. Thermostat control for quick warm up.

Electrical

12 volt system. 60 amp. hour capacity battery. Delcotron generator. Centrifugal and vacuum control of distributor spark advance.

Transmission

Powerglide automatic transmission. Two-speed, 3-element torque converter with hydraulically controlled planetary gears.

Suspension

Full coil suspension. Direct double acting shock absorbers.

Rear Axle

Salisbury, semi-floating type. Ratio 3.55:1.

Brakes

Four-wheel hydraulic, self-adjusting, vacuum power brakes. 11" dia. drums. Bonded linings. Handbrake operates rear brakes.

Steering

Hydraulic power steering. Gear ratio 17.5:1.

Wheels and Tyres

Steel disc wheels. 7.50 x 14—4 ply tubeless whitewall tyres.

Chassis/Frame

Perimeter type, all welded construction.

Dimensions

Overall length 214. 6 ins. Overall width 79.4 ins. Overall height 55.4 ins. (Sedan), 54.5 (Sports Sedan). Wheelbase 119 ins. Track — front 62.5 ins., rear 62.4 ins.

Lights and Horns

Four sealed beam headlamps. Parking lamps. Tail and stop lamps. Self-cancelling flashing turn signals, front and rear. Rear licence plate lamp. Reversing lamps. Courtesy switches opera-

ted by front doors. Dome lamp: Sedan. Side dome lamps: Sports Sedan. Luggage compartment lamp: Sports Sedan. Illuminated transmission indicator quadrant. Variable indirect instrument cluster illumination. Dual matched horns.

Instruments

Speedometer. Engine temperature and fuel gauges. Generator charge, oil pressure, and high beam warning lights.

Equipment and Features

'Modified Zone' windshield. 2-speed electric windshield wipers. Electric windshield washers. Metallic Magic-Mirror Acrylic Lacquer finish. 2-key locking system—one key for ignition and door locks, other for glove box and luggage compartment lock. Foam seat cushion pads. Genuine leather trim: Sedan; imported fabric trim: Sports Sedan. Carpet on front and rear floors. Armrests on all doors. Assist straps and coat hooks.

Heater-demister. Glove box lock. Two sun visors. Cigarette lighter. Electric clock. One ashtray in instrument panel, one ashtray in each of rear seat armrests. Crank-operated ventipanes. Safety belt anchorages. Specifications subject to change without notice.

*General Motors-Holden's Pty. Limited
Brisbane, Sydney, Melbourne, Adelaide, Perth. Copyright. All rights reserved. Printed in Australia.*



