



Aus Liebe zum Automobil

Volkswagen Passat





Overseas specification vehicles are shown in this brochure.
Some features and options may not be available.



The Passat philosophy.

This elegant new Passat intends to increase the pulse rate of every driver. Not only with its distinctively dynamic appearance and promise of inspired driving delight, but with innovative technology, surprising value and advanced German engineering.

The new Volkswagen Passat is setting a new benchmark in its class with greater performance, safety and fuel efficiency plus a wealth of intelligent, carefully considered details and luxurious features that will surprise. The balance of aesthetics and functional innovation is impressive and so too is its ambition to stay always one step ahead.



Full of unexpected pleasures.

First impressions are – there's a lot to love about the new Passat, starting with the **innovative key and key ignition**. Starting and parking has never been easier than with this simple, push-button electronic ignition switch. This key



also accesses an automatic boot release on the sedan – great when you're loaded up and don't have a spare hand. The smart thinking continues with creative utilisation of space, such as the practical **umbrella holder** with drainage

inside the driver's door; a large glove box that is chillable and numerous storage compartments. Interior lighting includes reading lights front and rear together with soft ambient illumination and distinctive blue instruments.





Full of unexpected pleasures.

Also stunning is the generous use of **polished chrome trim** throughout. Intelligent solutions like the 'set and forget' automatic function that turns headlights and wipers on and off as needed, and the clever '**coming home/leaving home**' illumination are truly pleasant surprises.

Other little touches – such as the high quality paint finish that extends to the engine bay and the tail lights with LED technology – emphasise the fact that Passat is an incredibly well thought-out vehicle.





The Passat range.

Both sedan and wagon offer a choice of the very latest petrol and diesel engines that deliver excellent fuel efficiency without compromising power. The Passat 2.0T FSI is impressive value with an outstanding list of standard inclusions, comfort and amazing space.

2.0 TDI, like the rest of the Passat range is full of striking details, safety and convenience features and is bound to excite drivers and passengers alike, while the flagship of the range, the 3.2 V6 FSI measures up with extensive examples of luxurious thinking.



The Passat range.

The new Passat sedan and wagon are both crafted to exacting standards of quality, performance, safety and style. They're much more spacious with distinctively elegant lines, dynamic form and a unique blend of function, innovative technology and luxurious little details. Take a look at the luggage space in the sedan.

It's impressively large and equipped with hooks for hanging bags and securing luggage. There's an ingenious 'load-through' feature that works simply by folding down the centre rear armrest to allow you to easily carry long items such as skis or golf bags.



With additional space in the cabin, driver and passengers can stretch out, relax and enjoy the elegant finish and driving pleasure. Thanks to the transversely positioned engine, all Passat models are blessed with additional space, which is something the designers have utilised

brilliantly. The wagon with the flexibility of a 60/40 split-fold rear seat and backrest adds a vast dimension to the carrying capacity of up to 1,731 litres. Additional touches in the wagon include retractable luggage cover, net partition and elegant chrome roof rails.



12

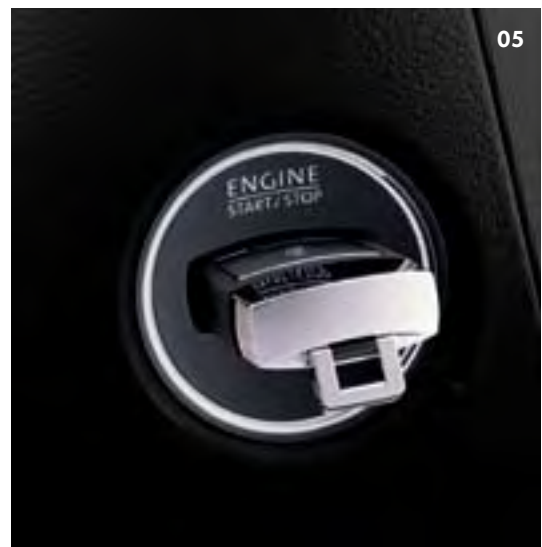
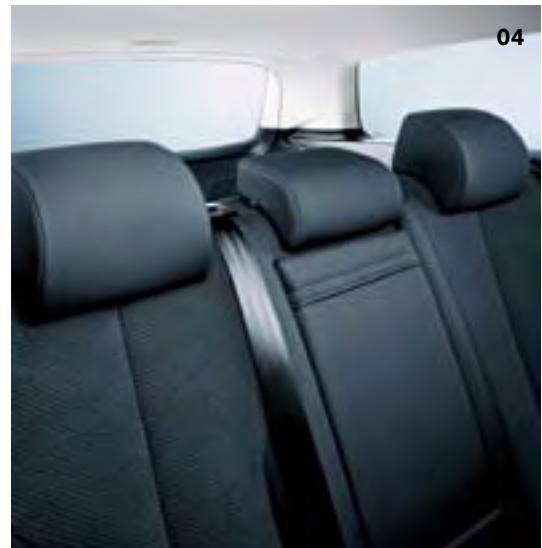
Interior.

The promise of the elegant exterior matches the innovative interior concept. This is where functionality and intelligent solutions continue with many pleasant surprises. For instance, the user-friendly parking brake is operated by the touch of a button on the dashboard – and holds the vehicle safely. It releases automatically once you're driving again.

As soon as you sit inside you're aware of the reassuringly solid ambience. **Superb materials** and **ergonomic design** embody the detailed planning and luxurious touches. Cast your eyes over the **chrome finishes** around doors, windows and the fine instrument surrounds on the dashboard. It's all class – as is the leather-clad gearshift. Breathe easy in the comfort of the **dual zone climate control air-conditioning** with two rear outlets for back seat passengers.

Appreciate the subtle convenience of the auto dimming interior rear view mirror. There's a low light sensor that activates the headlights while an additional 'set and forget' automatic function operates the windscreen wipers.

- 01 The Passat 3.2 V6 FSI is equipped with leather upholstery and individually heated front seats.
- 02 The Passat Wagon offers asymmetrical split-folding rear seats and backrest with a load-through provision for a cavernous boot volume.
- 03 The centre console with armrest offers a convenient storage box.
- 04 The Passat 2.0T FSI and 2.0 TDI are standard with black cloth comfort seats.
- 05 Starting the engine has never been easier with the innovative electronic ignition switch.





Interior.

Both Passat sedan and wagon boast luxuriously **large luggage compartments** with many carefully considered surprises designed to add even more impact to an already astounding space. And for convenience the front centre armrest is height adjustable whilst the glove compartment provides chillable storage space.

Passat's clearly arranged cockpit is more than elegant; it focuses on optimum driving comfort and ease. From the fully adjustable, lumbar supporting comfort seats to **ergonomically designed controls**, every driver's need has been pre-empted. The electronic ignition switch and illuminated instrument panel is directly in sight allowing quick access to all major driving data and intuitive operation. The stylish **three-spoke, leather-rimmed steering wheel** offers touch-button audio and trip computer functions as well as height and reach adjustment. A standard **premium CD in-car entertainment system** features a six disc changer in the dash and eight speakers front and rear for quality sound all around.

- 01** The Passat features a three-spoke leather-covered multi-function steering wheel with audio and trip computer functions.
- 02** Superb in-car entertainment is ensured by a standard six disc CD changer sound system with eight speakers.
- 03** The driver's door incorporates a practical umbrella compartment.
- 04** The Passat range is equipped with standard cruise control.





Safety.

It's reassuring when you feel safe in all conditions and at all times; and that's the promise of Passat. A galvanised steel body, intelligent technology and protective measures (such as laser welding, rigid body construction and impact-resisting passenger safety cell) promise the Passat driver and all occupants additional peace of mind. With the Passat being covered by a **12-year anti-corrosion perforation warranty**, there's even more evidence of how

seriously Volkswagen regards safety. Volkswagen's active safety concept features **Electronic Stabilisation Program (ESP)** that detects critical situations and acts quickly by braking individual wheels, reducing the engine's power output and giving more control back to the driver. ESP is supported by an **Anti-Lock Braking System (ABS)** and **Brake Assist** to recognise an emergency braking situation and increase the braking effect automatically. **Electronic**



01



02



- 01 The passenger safety cell is formed from steel panels with optimised strengths utilising the most advanced manufacturing techniques and materials.
- 02 With the innovative auto-hold function, the brakes are activated automatically when the vehicle comes to a standstill on a slope.

Brake-Pressure Distribution (EBD) regulates the ratio of front/rear brake pressure to ensure the Passat is braked optimally while **Anti-Slip Regulation (ASR)** offers terrific traction control. The **Auto Hold** function makes driving and stopping on steep inclines easy by automatically activating the electronic parking brake. The combination of all these features assures the driver of greater control and/or maximised braking efficiency when needed.



*Award source: 2005 Volkswagen Passat awarded "5 stars" by independent European motor vehicle safety assessment organisation Euro NCAP (European New Car Assessment Programme) during Euro NCAP Spring testing, May 2005.



Safety.

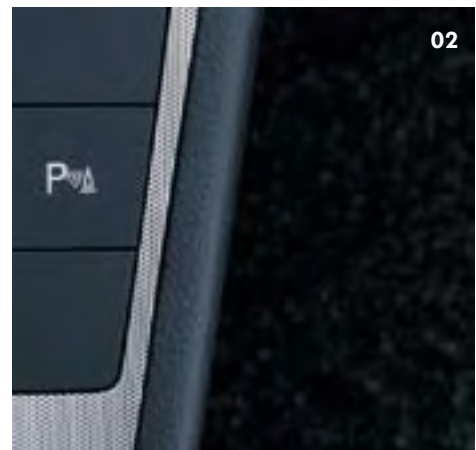
The Passat also excels in passive safety measures. It's fitted with standard **three-point, inertia reel seat belts** with front and outer rear seat belt pretensioners and front belt force limiters. There is a total of eight airbags: Driver and passenger **front and side airbags**, rear seat passenger **side airbags** and **full length curtain airbags**

to help protect both front and rear passengers in a side impact. Additionally, the Passat offers **front and rear parking sensors** to help with parking and dashboard warning symbols that will advise any deviation in tyre pressure in plenty of time to adjust. A very thoughtful feature is the 'coming home/leaving home' function



01

19



02

that illuminates the area around your Passat making it easier for you to get out of the car. And in the interests of cyclist and pedestrian safety, there are special protective zones at the front and bumpers. No wonder Volkswagen Passat was awarded the impressive **5 star safety rating** from Euro NCAP.

- 01** The Passat is equipped with a total of eight airbags, providing optimum protection for all passengers.
- 02** Front and rear parking distance sensors with acoustic warning help you when parking.



2.0T FSI.

The new Passat 2.0 turbo-charged FSI is an awesome performer with 147kW and 280Nm of torque. This outstanding engine with direct petrol injection is exceptionally economical with a dynamic development of thrust resulting in terrific acceleration (0 to 100km/h in 7.8 seconds for both sedan and wagon). Its dramatic pulling power and smooth running is further enhanced by the **6-speed Tiptronic transmission**.

Outstanding comfort and style features are standard in the new Passat models, such as the individual comfort

provided by **dual zone climate control air conditioning** for driver and front passenger. In addition, there are electrically heated and adjustable mirrors with integrated indicators and tail lights with LED technology. The **three-spoke leather steering wheel** with trip computer and audio functions emphasises the sporty character of the Passat while another smart feature is the **automatically dimming rear view mirror**. The many automatic features include an integral rain sensor that activates the windscreen wipers, a low tyre pressure indicator, low light sensor that



turns the headlights on and the very convenient **'coming home-leaving home'** function that illuminates the ground around the Passat. Of course, the Passat also offers cruise control, power windows, front and rear parking sensors and the premium CD sound system with a standard six disc CD changer in the dash and eight speakers. Stylish 17" **Le Mans alloy wheels** are also standard.

- 01** The distinctive tail and curved trailing edge, together with the chrome body side and rear bumper mouldings, emphasise the sporty character of the new Passat.
- 02** The Passat range offers dual zone climate control with a dust and pollen filter for maximum comfort. (Illustration shows optional brushed aluminium trim).
- 03** Turn indicators are integrated into the door mirrors as an added safety feature. The side mirrors are electrically heated and adjustable.



2.0 TDI

Of course the TDI shares all the features of the 2.0T FSI, but the main point of difference lies in the advanced **Turbo Diesel Injection (TDI)** engine. Volkswagen's cutting-edge **Pumpe-Düse** technology injects fuel with great speed and precision under incredibly high pressure. This produces an even more powerful, efficient and clean burning engine

that produces 103kW of power and 320 Nm of torque from only 1,750 rpm. The flexibility is remarkable while fuel consumption (6.6 litres per 100 km – combined cycle Sedan) adds even more appeal to the new Passat. With its **6-speed Direct Shift Gearbox (DSG)** transmission you'll find your love of driving is fast becoming a passion.



01 Distinctive chrome roof rails are an exterior highlight of the Passat Wagon.

02 The stylish 17" Le Mans alloy wheels are standard on the Passat 2.0T FSI and 2.0 TDI.

As with all Passat models the 2.0 TDI has responsive electro-mechanical power assisted steering. This, together with running gear that features a compact MacPherson strut front axle and a 4-link independent rear axle means there's plenty of compensation for any unevenness in the road. And that's another reassuring safety feature.

Direct Shift Gearbox (DSG)

DSG is an advanced 6-speed gearbox in which the clutch and gearshift are controlled electronically. What makes DSG unique is that the next gear is already pre-selected and awaiting power to be transferred, resulting in a gear change that takes only 3-4 hundredths of a second. The benefit is virtually no interruption to power, traction or acceleration and because it ensures optimum transmission of engine power, DSG provides excellent fuel consumption and driving satisfaction.



3.2 V6 FSI.

The outstanding Passat 3.2 V6 FSI takes its place as the flagship of the range and the epitome of advanced German engineering. From its sporty rear end to its distinctive downward sloping nose, gleaming radiator grille and stylish headlights, the new Passat 3.2 V6 FSI is a dynamic work of art. It produces 184 kW of power and an impressive 330Nm of torque, whisking you from 0 to 100 km/h in only 6.9 seconds for the sedan (7.2 seconds for the wagon), and thanks to DSG, there's no interruption to pulling power. In addition to the standard features shared with 2.0T FSI

and 2.0 TDI, this top of the range model offers 4MOTION all wheel drive. Choose from standard beige or black leather upholstery, with individually heated front seats. Also heated are the windscreen wiper washers. The Passat 3.2 V6 FSI is super safety conscious with low tyre pressure safety sensors, plus an **anti-theft alarm system with interior monitoring and tilt sensor**. Also standard are **front fog lights** mounted in the lower bumper and stylish **17" Solitude alloy wheels**.



4MOTION.

The Passat 3.2 V6 FSI features this advanced all wheel drive system. With variable torque distribution to all four wheels, 4MOTION provides the ultimate in enhanced road safety and superior handling. This innovative Volkswagen technology provides the best possible traction at all road speeds and conditions, regardless of the weather. The system uses an electronic Haldex clutch that responds to traction losses at the front and rear axles, and directs torque to the axle with the best traction.

- 01** The Passat 3.2 V6 FSI offers front fog lights, mounted in the lower bumper, adding a sporty element and safety feature to the Passat.
- 02** The stylish 17" Solitude alloy wheels are standard on the 3.2 V6 FSI.
- 03** The Passat 3.2 V6 FSI is equipped with 4MOTION all wheel drive.



01

26



02



03

Optional Equipment.

- 01 The Passat range offers an optional leather upholstery package with individually heated front seats (standard on 3.2 V6 FSI).
- 02 Optional child booster seats are fully integrated into the rear seat of the Passat and provide optimum safety and comfort for your child.
- 03 The option of a fully automatic opening and closing tailgate is available for the Passat Wagon.
- 04 The optional electric sunroof with sunblind offers both slide and tilt opening functions.
- 05 Optional Bi-xenon headlights produce a much clearer, brighter light, giving you a better view of-the road ahead and helping you drive more safely.
- 06 A comprehensive satellite navigation system is another piece of optional equipment.
- 07 Volkswagen Individual offers attractively styled 18" Chicago alloy wheels to add your personal touch to your new Passat.

The new Passat is available with a great list of extras that can make your choice even more individual. The **Bi-xenon headlights** are stunning; the **dynamic cornering light system** swivels horizontally to allow better illumination of the cornering path. It's a brilliant piece of inspired thinking. While **satellite navigation** could keep you heading in the right direction. A-touch of real luxury comes in the combination of **walnut wood** and **brushed aluminium inserts** in the dashboard and centre console. Or an **electric glass sunroof** that's slide and tilt adjustable with sunblind. The option of an **automatic tailgate** for Passat Wagon models offers fully automatic opening and closing of the tailgate. Perfect for the family are **child booster seats** which are fully integrated into the rear seat of the Passat Sedan or Wagon. The booster seat cushions are bolstered to provide excellent lateral support in conjunction with the removable lateral head restraint. For greater individuality and flexibility of your vehicle, Volkswagen Individual offers you attractively styled **18" Chicago alloy wheels** with a 15mm lowered sports suspension package. Special options for 2.0T FSI and 2.0 TDI models include **leather upholstery** and the **anti-theft alarm system**.



Specifications

2.0T FSI
Sedan & Wagon
2.0T TDI
Sedan & Wagon
3.2 V6 FSI
Sedan & Wagon

Safety and Security

Airbags				
Driver and front passenger airbags	S	S	S	S
Driver and front passenger side airbags	S	S	S	S
Outer rear seat passenger side airbags	S	S	S	S
Curtain airbags, front and rear	S	S	S	S
Anti-theft				
Alarm system with interior monitoring and tilt sensor	O	O	S	S
Electronic engine immobiliser	S	S	S	S
Electronic ignition lock	S	S	S	S
Body				
Fully galvanised with 12 year anti-corrosion perforation warranty	S	S	S	S
Door side impact protection	S	S	S	S
Rigid safety cell with front and rear crumple zones	S	S	S	S
Brakes				
Anti-lock Braking System (ABS)	S	S	S	S
Electronic Brake-pressure Distribution (EBD)	S	S	S	S
Brake Assist	S	S	S	S
Electronic parking brake	S	S	S	S
Auto hold function	S	S	S	S
Hazard warning system triggered in emergency braking situation	S	S	S	S
Child restraint				
3 child seat anchor points	S	S	S	S
Fog lights				
Front fog lights, mounted in lower bumper	O	O	S	S
Rear fog lamp	S	S	S	S
Head restraints				
Front head restraints, height adjustable	S	S	S	S
Rear head restraints height adjustable (3)	S	S	S	S
Locking				
Remote central locking with deadlock mechanism	S	S	S	S
2 stage unlocking (programmable)	S	S	S	S
Automatic locking after takeoff (programmable)	S	S	S	S
One touch lock/unlock for driver	S	S	S	S
Child safety locks on rear doors	S	S	S	S
Seat belts				
Front height adjustable with pre-tensioners and belt force limiters	S	S	S	S
Outer rear seat belt pre-tensioners	S	S	S	S
3 point seat belts for all passengers	S	S	S	S
Traction control				
Anti-Slip Regulation (ASR)	S	S	S	S
Electronic Stabilisation Program (ESP)	S	S	S	S
4MOTION all wheel drive	-	-	S	S

Exterior Equipment/Styling

Body highlights				
Chrome radiator grille surround	S	S	S	S
Chrome trim around side window frames	S	S	S	S
Chrome body side and rear bumper mouldings	S	S	S	S
Colour coding				
Bumper bars	S	S	S	S
Door handles	S	S	S	S
Outer rear view mirrors	S	S	S	S
Roof rails, Chrome (Wagon)	S	S	S	S
Tail lights with LED technology	S	S	S	S
Tinted glass				
Heat insulating tinted glass	S	S	S	S

Specifications continued

	2.0T FSI Sedan & Wagon	2.0T TDI Sedan & Wagon	3.2 V6 FSI Sedan & Wagon
Wheels			
Alloy wheels (Le Mans) 17 x 7 ¹ / ₂ " with 235/45 R17 tyres and anti-theft wheel bolts	S	S	-
Alloy wheels (Solitude) 17 x 7 ¹ / ₂ " with 235/45 R17 tyres and anti-theft wheel bolts	-	-	S
Full size alloy spare wheel	S	S	S
Low tyre pressure indicator	S	S	-
Tyre pressure monitoring system	-	-	S
Comfort and convenience			
Armrest			
Front centre armrest with storage box and 2 rear air outlets	S	S	S
Rear seat centre armrest with cup holders and load through provision	S	S	S
Air conditioning			
Dual zone climate control with indirect ventilation mode, CFC free	S	S	S
Dust and pollen filter	S	S	S
Automatic dimming rear-view mirror	S	S	S
Carpet mats			
Front and rear	P	P	S
Cruise control	S	S	S
Cup holders			
Front x 2 with cover	S	S	S
Rear x 2 in rear centre armrest	S	S	S
Bottle holders in front door pockets	S	S	S
Entry/warning reflectors in front and rear doors	S	S	S
Fuel filler flap			
Electrically operated via switch on driver's door	S	S	S
Grab handles			
Soft fold away grab handles x 4	S	S	S
Headlights			
Halogen headlights with clear polycarbonate lens	S	S	S
Headlight-on warning buzzer	S	S	S
Low light sensor with automatic headlight function	S	S	S
Coming/leaving home function	S	S	S
Combined headlight and fog light switch, internal angle adjustment	S	S	S
In car entertainment			
AM/FM stereo with security coding	S	S	S
Audio functions mounted on steering wheel	S	S	S
6 disc CD changer, in dash	S	S	S
8 speakers, front and rear	S	S	S
Instrumentation			
Speedometer and tachometer, electronic odometer and tripmeter, digital clock, fuel and coolant gauges, outside temperature display, transmission gear indicator and blue adjustable illumination	S	S	S
Interior highlights			
'Black Point' inserts in dashboard	S	S	S
'Soft Silver' inserts in centre console	S	S	S
Chrome trim on instrument cluster and gearshift lever surround	S	S	S
Leather rimmed steering wheel and gearshift knob	S	S	S
Interior lighting			
With time delay, front and rear	S	S	S
Reading lights, front and rear with chrome rings	S	S	S
Luggage compartment			
Automatic boot lid release (Sedan)	S	S	S
Chrome plated load restraining hooks	S	S	S
Luggage compartment light	S	S	S
Extendable net partition and luggage cover (Wagon)	S	S	S
Shopping bag hooks (Sedan)	S	S	S
Stainless steel sill protection strip (Wagon)	-	-	S
Storage box in side lining	S	S	S
12 volt socket	S	S	S
Mirrors			
Electrically heated and adjustable	S	S	S
Turn indicators with LED technology integrated in exterior mirrors	S	S	S

Key S Standard

O Optional

P Package

- Not available

Specifications continued

	2.0T FSI Sedan & Wagon	2.0T TDI Sedan & Wagon	3.2 V6 FSI Sedan & Wagon
Comfort and convenience <small>continued</small>			
Parking distance sensors, front and rear with acoustic warning	S	S	S
Power steering			
Electro-mechanical, vehicle speed and steering input sensitive	S	S	S
Seating			
Comfort front seats	S	S	S
Height adjustment for front seats	S	S	S
Individually heated front seats	P	P	S
Driver's seat with 6-way electric adjustment for backrest and lumbar	S	S	S
Split folding rear seat backrest (60/40), lockable with armrest and load through provision	S	S	S
Steering wheel			
3 spoke leather rimmed steering wheel	S	S	S
Audio and trip computer functions	S	S	S
Height and reach adjustable steering wheel	S	S	S
Storage			
Chillable and lockable glove box with illumination	S	S	S
Centre console storage compartment	S	S	S
Coin tray and 12 volt socket in console	S	S	S
Door pockets, front and rear	S	S	S
Front seat backrest storage pockets	S	S	S
Rear centre armrest with storage box and 2 cup holders	S	S	S
Compartment with lid in roof console	S	S	S
Trays in dashboard (2)	S	S	S
Umbrella holder in driver's door	S	S	S
Trip computer			
Multi-function trip computer – driving time, trip length, average speed, average and current fuel consumption, distance till empty, speed warning function, audio and convenience display	S	S	S
Upholstery			
Verona cloth seats	S	S	–
Vienna perforated leather	P	P	S
Vanity mirrors			
Driver's and passenger's side vanity mirrors	S	S	S
Illuminated on driver's and passenger's side	S	S	S
Wipers			
2 speed aero wipers with wash/wipe and vehicle speed sensitive intermittent wipe	S	S	S
Heated washer jets	P	P	S
Rain sensor	S	S	S
Windows			
Power front/rear, with roll-back function, with one-touch up-down	S	S	S
Remote operated convenience close and open feature	S	S	S
12V socket			
Centre console	S	S	S
Rear seat area	S	S	S
Luggage compartment	S	S	S
Optional Equipment			
Alloy wheels			
Volkswagen Individual (Chicago) 18 x 8" with 235/40 R18 tyres (5), sports suspension (15mm lowered) and anti-theft wheel bolts	O	O	O
Audio			
DYNAUDIO 600W premium audio system with 10 channel amplifier and 10 speakers	O	O	O
Anti-theft alarm system with interior monitoring and tilt sensor	O	O	S
Automatic tailgate			
Automatic opening and closing of the tailgate via remote or button on tailgate (Wagon)	O	O	O
Bi-Xenon headlights			
Xenon headlights for high and low beam with static and dynamic cornering lights	O	O	O
Automatic self levelling and headlight cleaning system			

Specifications continued

	2.0T FSI Sedan & Wagon	2.0T TDI Sedan & Wagon	3.2 V6 FSI Sedan & Wagon
Child booster seats (2) Integrated into outer rear seats with lateral cushion support and removable lateral head restraint Not available with pure beige leather upholstery	○	○	○
Electric seats with memory Front seats with 12-way electric adjustment, driver's seat with 3 position memory Electrically heated and adjustable door mirrors, foldable with memory	○	○	○
Electric glass sunroof, slide and tilt adjustable with sunblind	○	○	○
Front fog lights, mounted in lower bumper	○	○	S
Leather upholstery with individually heated front seats	P	P	S
Metallic/Pearl Effect paint	○	○	○
Satellite navigation Large format 6 ¹ / ₂ " colour map screen with audible driving recommendations Multi-function trip computer with additional Satellite navigation display 6 disc CD changer mounted in glove box	○	○	○
Walnut wood interior inserts in dashboard combined with aluminium insert in centre console	○	○	○

Technical Specifications

Engine	2.0T FSI	2.0 TDI	3.2 V6 FSI
Type	4 cylinder inline turbo petrol	4 cylinder inline turbo diesel	6 cylinder 'V' petrol
Installation	Front transverse	Front transverse	Front transverse
Cubic capacity, litres/cc	2.0/1984	2.0/1968	3.2/3168
Bore/stroke, mm	82.5/92.8	81.0/95.5	86.0/90.9
Max power, kW@rpm	147@5100-6600	103@4000	184@6250
Max torque, Nm@rpm	280@1800-4700	320@1750-2500	330@2750-3750
Compression ratio	10.5:1	18:1	12.0:1
Fuel system	Bosch Motronic MED 9.1	Simos PPD1	Bosch Motronic ME 7.1.1
Ignition system	Electronic	Compression	Electronic
Exhaust emission control	Two three-way catalytic converters with Lambda control;	Exhaust gas recirculation Exhaust gas recirculation and oxidising catalytic converter	Three-way catalyst with lambda control; Exhaust gas recirculation
Emission level	EU IV	EU IV	EU IV
Fuel type (Recommended)	Premium unleaded 98 RON	Diesel 51CZ	Premium unleaded 98 RON
Transmission	6 Speed Auto	6 Speed DSG	6 Speed DSG
Driven wheels	Front wheel drive	Front wheel drive	4MOTION all wheel drive
Performance			
0-100km/h, seconds	7.8 Both Variants	9.8 (Sedan) 10.1 (Wagon)	6.9 (Sedan) 7.2 (Wagon)
Top speed, km/h	230 (Sedan) 227 (Wagon)	206 (Sedan) 203 (Wagon)	246 (Sedan) 243 (Wagon)
Fuel consumption*			
Combined, L/100km	8.7 (Sedan) 8.9 (Wagon)	6.6 (Sedan) 6.7 (Wagon)	10.0 (Sedan) 10.1 (Wagon)
CO ₂ emission g/km	216 (Sedan) 221 (Wagon)	178 (Sedan) 181 (Wagon)	240 (Sedan) 242 (Wagon)
Fuel tank capacity, litres	70	70	70

*Fuel consumption figures according to Australian Design Rule (ADR) 81/01.

The driving style, road and traffic conditions, environmental influences and vehicle condition can in practice lead to consumption figures which may differ from those calculated with these standards.

Key S Standard

○ Optional

P Package

– Not available

Technical Specifications continued

Running gear	2.0T FSI	2.0 TDI	3.2 V6 FSI
Suspension	Front axle	Independent, MacPherson struts with lower wishbones and coil springs. Anti-roll bar.	
	Rear axle	Independent, four-link with coil springs. Anti-roll bar.	
Steering	Electro-mechanical power assisted rack & pinion steering		
Brake systems	Anti-lock Braking System (ABS) with Electronic Brake-pressure Distribution (EBD), Brake Assist and Electronic Stabilisation Program (ESP)		
Brakes	Front	Ventilated Discs	
	Rear	Discs (Ventilated Discs V6 Only)	
Turning circle, metres	11.4		

Weights	2.0T FSI	2.0 TDI	3.2 V6 FSI
Tare Mass Kg	1506 (Sedan) 1567 (Wagon)	1526 (Sedan) 1587 (Wagon)	1606 (Sedan) 1667 (Wagon)
Towing Capacity kg	Braked	1500	1500
	Unbraked	740 (Sedan) 750 (Wagon)	740 (Sedan) 750 (Wagon)

Exterior Dimensions[^]

Overall length mm	4765 (4774)	
Width mm	1820	
Height mm	1472 (1517)	
Wheelbase mm	2709	
Track mm	Front	1552
	Rear	1551

Luggage Area Dimensions [^]	2.0T FSI	2.0 TDI	3.2 V6 FSI
Volume (Rear seat upright) L	565 (603)	565 (603)	541 (588)
(Rear seat folded) L	(1731)	(1731)	(1641)
Floor length	1164 (1132)	1164 (1132)	1164 (1132)
(Rear seat upright) mm			
(Rear seat folded) mm	1974 (1956)	1974 (1956)	1974 (1956)
Maximum width mm	1412 (1428)	1412 (1428)	1412 (1428)
Width between wheel arches mm	1014 (1000)	1014 (1000)	1014 (1000)
Height mm	409 (463)	409 (463)	409 (442)

[^] (Wagon figures in brackets)

Colours and Upholstery

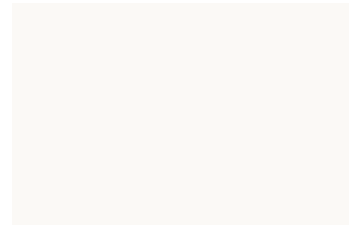
Colours



Deep Black Pearl Effect



Arctic Blue Silver Metallic



Candy White



Shadow Blue Metallic



Reflex Silver Metallic



Wheat Beige Metallic



Granite Metallic

Please note: Metallic and Pearl Effect paint are optional at extra cost. The print process does not allow for exact reproduction of the exterior or the upholstery colours. For further details, please contact your Volkswagen Dealer.

Please contact your Volkswagen Dealer for further information on colours and upholstery combinations.

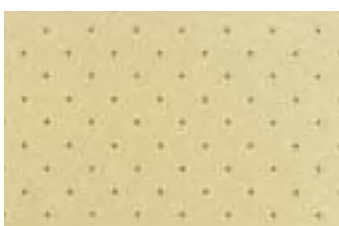
Upholstery

Standard Cloth – 2.0T FSI and 2.0 TDI Passat



Black Cloth

Leathers – Passat*



Pure Beige Leather (black carpet)#



Black Leather

Key

#Pure Beige Leather is not available with following exterior paint colours: Arctic Blue Silver Metallic, Candy White and Reflex Silver Metallic.

*Leather is optional for 2.0T FSI, 2.0 TDI models and standard for the 3.2 V6 FSI.

Owning a Volkswagen

Volkswagen New Vehicle Warranty

Every new Volkswagen passenger vehicle is covered by a 3-year/100,000km (whichever occurs first) manufacturer's warranty, which includes Volkswagen Assist (24hr roadside assistance). Every new Volkswagen passenger vehicle is also covered by a 3-year paintwork and 12 year anti-corrosion perforation warranty.

Volkswagen Assist – Premium

As a customer you can be assured that wherever you travel in Australia you will have access to roadside assistance 24 hours a day, 365 days a year. You will receive help in the event of a breakdown or accident and if required, your vehicle will be mobilised or transported to a Volkswagen authorised workshop. As a Volkswagen owner you will also have access to the additional benefits of accommodation and car rental if your vehicle cannot be mobilised within 24 hours when you are travelling away from home. Furthermore, you can enjoy the benefits of Volkswagen Assist's concierge service for Australia-wide travel booking.

Volkswagen Extended Warranty

Why not continue the confidence of a Volkswagen Warranty by purchasing Volkswagen Confidence Plus – an Insurance Policy designed to provide cover for the repair or replacement of a failed mechanical or electrical part, after the expiration of the Volkswagen standard new vehicle warranty. Volkswagen Confidence Plus is available for an additional period of 12 or 24 months unlimited kms. In addition, Volkswagen Confidence Plus includes the continuation of your Volkswagen Assist, our 24-hour roadside assistance program. You can purchase Volkswagen Confidence Plus at any time within your Volkswagen standard new vehicle warranty (3-year/100,000km). For more information contact your participating local dealer or visit volkswagen.com.au

Volkswagen Service

Your Authorised Volkswagen Service Centre is part of Volkswagen's global Quality Management System, ensuring all dealers are certified to ISO 9001:2000 – an internationally recognised Quality Standard. Authorised Volkswagen Service Centres have factory trained Technicians equipped with the very latest diagnostic equipment, specialist tooling and Volkswagen Genuine Parts. An Authorised Volkswagen Service Centre undertakes work in accordance to factory specified guidelines and maintenance schedules.

Volkswagen Genuine Parts®

Volkswagen Genuine Parts® are designed for your vehicle and approved by Volkswagen, with particular regard to safety. The workmanship, dimensional accuracy and materials used in these parts comply with factory specifications. To ensure safety and reliability, Volkswagen recommends the use of Volkswagen Genuine Parts®. Volkswagen Authorised Dealers offer a 2-year warranty on Genuine Parts from the date of purchase.

Volkswagen Finance

Buying, Borrowing or Leasing, Volkswagen Finance will certainly make you think differently about financing and insuring your new Volkswagen. Committed to meeting the needs of Volkswagen drivers, across Australia, we offer a range of leasing, financing and insurance products, each with distinct advantages depending on your specific circumstances. Our packages are personalised to suit your individual requirements. You design your plan so that it meets your budgeting needs and can rest assured that there will be no surprises along the way. Speak to your local participating Volkswagen Dealer today to put together a financial solution that best suits your lifestyle.

Glossary

4MOTION

An all-wheel-drive system that provides the best possible traction at all road speeds, in all weather and road conditions. An electronic Haldex clutch responds to traction losses at the front and rear axles and directs torque to the axle with the best traction.

Anti-lock Braking System (ABS)

When braking, wheel speed sensors measure the road wheel speed and should one or more wheels start to lock the ABS system reduces brake pressure to that wheel. This prevents the wheels from locking during heavy or emergency braking, enabling the vehicle to remain steerable.

Anti-Slip Regulation (ASR)

ASR improves driving and steering characteristics by preventing the front wheels from spinning under acceleration. When a difference in driving wheel speed is detected (i.e. when one wheel starts to spin due to differences in road surfaces, e.g. due to water or dirt) the system automatically reduces engine torque. ASR is a switchable traction control system.

Auto Hold function

As soon as the vehicle comes to a standstill on a slope, the electronics activate the electronic parking brake automatically so that you can take your foot off the brake pedal. This function is released automatically when you drive off again.

Brake Assist

During emergency braking, Brake Assist aids the driver by increasing the brake pressure automatically to a level exceeding the locking limit. The ABS is thus quickly brought into the operating range, which enables maximum vehicle deceleration to be achieved.

Direct Shift Gearbox (DSG)

DSG is a manual gearbox in which the gearshifts are controlled electronically. What makes the DSG unique is that it has 2 separate gear sets operated by 2 wet multi-plate clutches. The benefit of 2 gear sets and 2 multi-plate wet clutches is that one gear set and clutch is engaged driving the vehicle with the second clutch having already pre-selected the next gear awaiting for power to be transferred. As the next gear has already been pre-selected prior to power being applied, the gear change only takes 3–4 100ths of a second. There is virtually no interruption to power, traction or acceleration. The DSG also offers Tiptronic gear selection and sports mode.

Electronic Brake-pressure Distribution (EBD)

Electronic, more sophisticated means of regulating the ratio of front/rear brake pressure. Settings are varied according to driving and load conditions to ensure each wheel is braked to the optimum extent.

Electronic Stabilisation Program (ESP)

ABS and ASR traction control systems are integrated into the Electronic Stabilisation Program (ESP). In short, ESP helps ensure that the vehicle goes where you steer it even in extreme driving conditions. The ESP system constantly compares the actual movement of the vehicle with pre-determined values and should a situation arise where the vehicle starts to skid, ESP will apply the brakes to individual wheels and automatically adjust the engine's power output to correct the problem. ESP prevents the vehicle from losing control when trying to avoid an accident, for example. It also prevents spinning off on a curve due to either understeer or oversteer.

Volkswagen is distributed by Volkswagen Group Australia Pty Ltd, The Lakes Business Park, 6 Lord St, Botany, NSW 2019. ABN 14 093 117 876. Specifications are as planned at February 2007 for model year 2007 and are subject to change without notice or obligation. Cars and accessories are shown for illustrative purposes only and may not depict Australian specifications. All Volkswagen approved parts and accessories are warranted for 2 years/ unlimited kilometres. All warranties implied by legislation or otherwise, are excluded to the maximum extent permitted by law. The liability of Volkswagen shall, subject to the law, be limited at Volkswagen's discretion: 1. In the case of the goods, the repair or the cost of repair, or the replacement or the cost of replacement; and 2. In the case of services, the re-supply of the services or the cost of re-supply of the services. All information in this brochure is correct at time of publication, however variations may occur from time to time and Volkswagen, in so far as it is permitted by law to do so, shall not be liable in any way as a result of any reliance by any person on anything contained in this brochure. The colours shown in the brochure are indicative only and may vary from actual items owing to the printing process. Authorised Volkswagen dealers will provide up-to-date information on model application, design feature, prices and availability on request.

Volkswagen Insurance & Volkswagen Extended Warranty are provided by Allianz Australia Insurance Limited (Allianz), AFS Licence No. 234708, ABN 15 000 122 850. In arranging this insurance Volkswagen Financial Services Australia Limited, ABN 20 097 071 460 & Volkswagen Group Australia Pty Ltd, ABN 14 093 117 876 and the authorised dealers act as agents of Allianz and not as your agent. Volkswagen Finance is a trading name of Volkswagen Financial Services Australia Limited. Locked Bag 5009, Alexandria NSW 2015. Tel: 02 9695 6311.



Aus Liebe zum Automobil

Volkswagen Passat

Publication: VGA4050C

Internet: www.volkswagen.com.au