



Das Auto.

Volkswagen Jetta





Overseas specification vehicles are shown in this brochure. Some features and options may not be available in Australia.

The Jetta – defining values.

The Volkswagen Jetta combines elegant design with remarkable performance and the most advanced German engineering. The spacious interior and impressive attention to detail define the distinctive European cabin. Beneath its sleek surface, the Jetta range delivers high performance with superior fuel economy thanks to

Volkswagen's cutting edge TSI Petrol and turbo diesel (TDI) engine technology. Inside and out the Jetta is a brilliant example of form that meets function to provide an exhilarating driving experience.



Attention to detail.

The Jetta is constructed with **precision laser welding** techniques – increasing body rigidity for more precise handling, tight panel gaps and a quiet interior.

It is backed by a **12-year anti-corrosion perforation warranty**. The solid ‘thunk’ of the door closing reassures you of the build quality and Volkswagen’s commitment to safety.

The **‘coming home’** function illuminates the area around the car at night, when activated. The **central locking is programmable** for added convenience – allowing automatic locking when the car starts moving and one-touch unlocking for the driver’s door.



The Jetta range.

Each model combines comprehensive safety features, and class-leading petrol or turbo diesel engines. The sophisticated independent rear suspension offers greater agility and a comfortable ride. The **Jetta 118TSI** is a demonstration of technological innovation with it's

impressive twin-charged **TSI** engine and the option of a new 7 speed Direct Shift Gearbox (DSG). The **103TDI** offers incredible fuel efficiency, responsiveness, quietness and environmental friendliness. At the top of the range, the outstanding **Jetta 147TSI** delivers brilliant dynamics



with increased performance. When leaving your Jetta, the coming home function allows you to choose to activate the coming home function manually by adjusting the position of the indicator stalk. The duration of illumination can be preset via the large format Multi-function Display Plus.



Interior.

The Jetta interior represents the very best in **ergonomic design** utilising the **highest quality materials** and finishes. The interior cabin space is outstanding with plenty of legroom and headroom. There are also cup holders for front and rear passengers and **dual zone climate control** with air quality sensor and innovative vents in the rear of the cabin for the added comfort of rear seat passengers. Front height adjustable seats offer variable lumbar support to provide a more comfortable seating position. Driving comfort is enhanced by superb cabin insulation. Another nice touch is the leather-covered **multi-function steering wheel** that lets the driver adjust the audio volume or scroll through the trip computer display – while keeping both hands on the wheel. On top of ample interior space the Jetta features a **cavernous boot volume** of 527 litres that offers the flexibility of a 60/40 split-fold rear seat and load-through feature.

- 01 The Jetta 118TSI and 103TDI are equipped with comfortable anthracite velour seats.
- 02 The Jetta features a three-spoke leather rimmed steering wheel and multi-function trip computer.
- 03 The RCD310 CD sound system is mp3/wma compatible.
- 04 A rear centre armrest with load-through provision is standard on the Jetta range. Leather upholstery is an optional extra.
- 05 The Jetta impresses with generous boot dimensions and a massive volume of 527 litres.

RCD310 Entertainment System.

The new RCD310 in-car entertainment system features a large display, a single disc CD player with mp3/wma compatibility, as well as an AUX-IN interface for connecting a mobile audio player. This is standard for 118TSI and 103TDI.





Safety.

Jetta's front and rear crumple zones absorb an impact and divert resulting forces around the **passenger safety cell**. Driver and passenger **front and side airbags** and **full length curtain air bags** help protect all occupants in a side impact. There are three rear head restraints, safety optimised head restraints for front seats, and **3-point seat belts** for all occupants. Thoughtful safety features include door mirrors with integrated indicators and low tyre pressure monitoring. Jetta's 'active' safety features include **Electronic Stabilisation Program (ESP)**,

which brakes individual wheels and reduces engine power, helping to keep the vehicle under control. ESP is supported by an **Anti-Lock Braking System (ABS)** and **Brake Assist** which recognises an emergency braking situation and increases the braking effort automatically. **Electronic Brake-pressure Distribution (EBD)** regulates the ratio of front/rear brake pressure to ensure each wheel is braked optimally. When combined, these active safety features enable the driver to maintain steering control and/or maximise braking efficiency in an emergency situation.



- 01** The standard safety equipment offers driver and front passenger airbags, front side airbags for driver and passenger and curtain airbags, front and rear. Leather upholstery is an optional extra.
- 02** The Jetta is equipped with a class-leading safety package including ABS, ESP and a total of six airbags.

Hill-Start Assist – Available with a Direct Shift Gearbox (DSG)

Hill-start assist holds the vehicle stationary for 1.5 seconds on hills with an incline greater than 5 degrees, when the foot brake is released, by temporarily locking the brake pressure. This intelligent feature provides a comfortable hill start, which importantly avoids any rolling back.



118TSI.

The powerful 118TSI delivers an exceptional drive with 118kW of power and 240Nm of torque driving through a 6-speed manual or an optional 7-speed DSG transmission. Enjoy the convenience of rain sensing wipers, an automatically dimming rear view mirror, dual zone air-conditioning and height adjustable front seats. The Jetta 118TSI includes as standard, 16" Atlanta alloy wheels and rear parking sensors. It also boasts advanced front and rear suspension for greater agility, tighter manoeuvring and less body roll during cornering.

7 Speed Direct Shift Gearbox (DSG).

7 speed DSG is a completely new and advanced 7-speed gearbox in which the clutch and gearshift are controlled electronically. What makes DSG unique is that the next gear is already pre-selected and awaiting power to be transferred, resulting in a gear change that takes only 3-4 hundredths of a second. The benefits are virtually no interruption to power, traction or acceleration, and additional flexibility. Furthermore, because it ensures optimum transmission of the engine power, DSG provides excellent fuel consumption and driving satisfaction.



- 01** Standard rear parking distance sensors reduce the audio volume to ensure clearly audible warnings.
- 02** The stylish 16" Atlanta alloy wheels are standard on the 118TSI and 103TDI.

TSI Technology. A miracle of performance.

TSI technology is Volkswagen's twin or single-charged petrol engines with forced induction and direct injection. This technology results in engines boasting **excellent torque and power output at low revolutions**, combined with **lower fuel consumption and emissions**.

The Jetta 118TSI engine is an innovative twin-charged 1.4 litre unit that saves petrol while delivering impressive power and performance. From the driver's seat, all you feel

is one continuous, exhilarating surge as it produces high torque at low revs and an abundance of power.

You can continue driving all day because, if there's one thing the TSI engine hates, it's petrol stations. It's as economical as many engines with half as much power.



103TDI.

The Jetta 103TDI features an advanced turbo diesel (TDI) engine with common rail technology and a Diesel Particulate Filter. The result is a powerful, efficient and clean burning engine that produces 103kW of power and 320Nm of torque from only 1,750rpm creating incredible flexibility, with fuel consumption of only 5.8L/100kms* (combined cycle 103TDI manual). It features a 6-speed manual transmission as standard or the option of a 6-speed Direct Shift Gearbox (DSG).

Dual zone air-conditioning is provided for individual driver and passenger comfort, as is electronic power steering and a height and reach adjustable steering column. For your safety, the central locking is programmable and the key allows remote opening of the boot.

*Combined city/highway driving as per Australian standard ADR81/01.



- 01** Turn indicators are integrated into the door mirrors as an added safety feature. The side mirrors are electrically heated and adjustable.
- 02** The Jetta range offers dual zone climate control with a dust and pollen filter for maximum comfort.
- 03** Front seat drawers provide a handy storage solution. Leather upholstery is an optional extra.



147TSI.

Sporty and elegant, the Jetta 147TSI is equipped with the 6-speed Direct Shift Gearbox (DSG) as standard, accelerating from 0 to 100 km/h in just 7.2 seconds. The advanced TSI petrol engine produces 147kW of power at 5,100–6,000rpm and 280Nm of torque for greater flexibility. 17" Classix alloy wheels and 15mm lowered sports suspension, front fog lights and dual chrome exhausts complete the performance package. The spacious interior boasts quality appointments that include front sports seats and brushed aluminium highlights.

RCD510 Entertainment System

The new RCD510 in-car entertainment system features a high resolution large colour TFT display with touch screen operation, a six disc CD changer with mp3/wma functions, AUX-IN interface for connecting a mobile audio player, as well as SD/MMC memory card slots.



- 01** The latest technology in-car entertainment is available with the new RCD510 system, featuring a high resolution large colour TFT display with touch screen operation and a six disc CD changer with mp3/wma functions.
- 02** The Jetta 147TSI offers front fog lights, mounted in the lower bumper, adding a sporty element and an additional safety feature to the Jetta.
- 03** The stylish 17" Classixs alloy wheels are standard on the 147TSI. Main picture shows the optional 18" Charleston alloy wheels.



Optional equipment.

Life is all about choices and creating your own individual style. The Jetta offers you several ways to add a personal touch to your new car. Choose from an optional leather upholstery package with individually heated front sports seats or electric glass sunroof that has slide and tilt opening plus a retractable sunblind.

Volkswagen Individual offers you attractively styled 18" Charleston alloy wheels with a 15mm lowered sports suspension package and anti-theft wheel bolts. Turn night into day with bi-xenon headlights incorporating automatic self levelling and a headlight cleaning system. For added security, an anti-theft alarm system with interior monitoring and tilt sensor is available.

RNS510 Satellite Navigation System.

The RNS510 Satellite Navigation System operates via a user-friendly touch sensitive screen with a high resolution widescreen display that shows 3D maps, pictures and video in brilliant clarity. With a generous 30GB hard drive and built-in DVD drive, your music library and navigation data is always at your fingertips. For advanced flexibility, your favourite music can also be accessed via an Auxiliary input audio socket for MP3 players or SD memory card slot.

- 01** The Jetta range offers an optional leather upholstery package with individually heated front sport seats.
- 02** Bi-xenon headlights with a cleaning system are optional on the Jetta range.
- 03** The optional sunroof with sunblind offers both slide and tilt opening functions.
- 04** Volkswagen Individual offers attractively styled 18" Charleston alloy wheels to add a more powerful stance to your Jetta.
- 05** The RNS510 Satellite Navigation System features a high resolution touch screen display capable of 3D map views, with a 30GB hard drive and DVD drive for audio and video playback.



Volkswagen Genuine Accessories.

Movement fascinates. In fact, there are few subjects that excite people more, that's because movement is synonymous with freedom. Our comprehensive range of genuine accessories give you the freedom to customise the look and feel of your vehicle to reflect your own personality and individual sense of style.

The product philosophy is simple – to deliver innovative technologies and premium design – right down to the finest detail. Each and every genuine accessory has been designed specifically with the Jetta in mind and has been engineered and rigorously tested to ensure that it meets the same high standards of quality as the vehicle itself.

No matter what you choose you can have peace of mind knowing that any genuine accessory fitted by your local Volkswagen Dealer, at the time of your vehicle purchase will be covered by the same warranty as the vehicle itself.

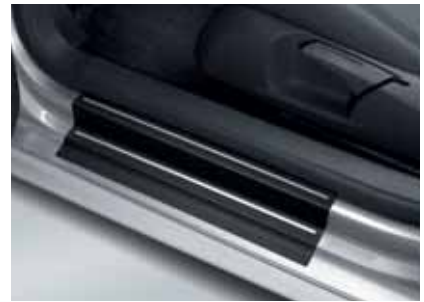
For more information or to experience the full range of genuine accessories designed to suit the Jetta, visit your local Volkswagen Dealer.



Roof Bar Set and Bicycle Holder



Kayak Holder



Door Sill Protective Strip



Front and Rear Mudflaps



Luggage Net



Rear Window Sunblind



Tow Bar



Boot Mat, Moulded Foam



Rubber Floor Mats



Body Kit, Front



Satellite Navigation System



Body Kit, Rear



Bluetooth Phone Kit



Boot Lip Spoiler & Rear Chrome Trim



iPod Adaptor



Stainless Steel Pedal Set



16" Contur Alloy Wheel



16" Namib Alloy Wheel



17" Activa Alloy Wheel
(brilliant silver or chrome silver)



17" Exis STP Alloy Wheel



17" Vision Alloy Wheel
18" Vision Alloy Wheel



18" Karthoum Alloy Wheel
(brilliant silver or titanium silver)

Specifications

	118TSI	103TDI	147TSI
Safety and Security			
Airbags			
Driver and front passenger airbags	S	S	S
Driver and front passenger side airbags	S	S	S
Curtain airbags, front and rear	S	S	S
Anti-theft			
Electronic engine immobiliser	S	S	S
Body			
Fully galvanised with 12 year anti-corrosion perforation warranty	S	S	S
Door side impact protection	S	S	S
Rigid safety cell with front and rear crumple zones	S	S	S
Brakes			
Anti-lock Braking System (ABS)	S	S	S
Electronic Brake-pressure Distribution (EBD)	S	S	S
Brake Assist	S	S	S
Hazard warning system triggered in emergency braking situation	S	S	S
Hill Start Assist (HSA) (with DSG)	S	S	S
Child restraint			
Child seat anchor points mounted on rear parcel shelf (3)	S	S	S
Fog lights			
Front fog lights, mounted in lower bumper	O	O	S
Rear fog lamp	S	S	S
Head restraints			
Front safety optimised head restraints, height adjustable	S	S	S
Rear head restraints height adjustable (3)	S	S	S
Locking			
Remote central locking with deadlock mechanism	S	S	S
2 stage unlocking (programmable)	S	S	S
Automatic locking after takeoff (programmable)	S	S	S
One touch lock/unlock for driver	S	S	S
Child safety locks on rear doors	S	S	S
Seat belts			
Front height adjustable with pre-tensioners and belt force limiters	S	S	S
3 point seat belts for all passengers	S	S	S
Traction control			
Anti-Slip Regulation (ASR)	S	S	S
Electronic Stabilisation Program (ESP)	S	S	S
Exterior Equipment/Styling			
Body Enhancements			
Body coloured bumper bars, door handles and exterior mirrors	S	S	S
Body coloured lower front and rear bumper trim	–	–	S
Chrome inserts in front bumper and radiator grille	S	S	S
Chrome radiator grille surround	S	S	S
Chrome trim around window frames	S	S	S
Chrome trim on lower boot lid	A	A	A
Sports body kit	A	A	A
Protection			
Bonnet protector	A	A	A
Headlight protectors	A	A	A
Loading sill protection	A	A	A
Mudflaps, front and rear	A	A	A
Slimline weather shields	A	A	A
Roof			
Bicycle, kayak, ski, surfboard and snowboard holders	A	A	A
Luggage rack	A	A	A
Roof bars	A	A	A
Ski and luggage box	A	A	A
Sports suspension with 15mm lowered ride height	–	–	S
Tail lights and turn indicators integrated in exterior mirrors with LED technology	S	S	S
Tinted glass			
Heat insulating tinted glass	S	S	S

Specifications continued

	118TSI	103TDI	147TSI
Exterior Equipment/Styling (continued)			
Towbar			
Towbar with 7-pin flat trailer connector and removable tongue	A	A	A
Wheels			
Alloy wheels (Atlanta) 16 x 6½" with 205/55 R16 tyres	S	S	–
Alloy Wheels (Contour) 16 x 7"	A	A	–
Alloy Wheels (Namib) 16 x 7"	A	A	–
Alloy Wheels (Tangis) 16 x 7"	A	A	–
Alloy wheels (Classixs) 17 x 7" with 225/45 R17 tyres	–	–	S
Alloy Wheels (Activa) 17 x 7"	A	A	A
Alloy Wheels (Exis STP) 17 x 7½"	A	A	A
Alloy Wheels (Vision) 17 X 7"	A	A	A
Alloy Wheels (Karthoum) 18 x 8"	A	A	A
Alloy Wheels (Vision) 18 x 8"	A	A	A
Anti-theft wheel bolts	S	S	S
Steel spare wheel 16 x 6½" with 205/55 R16 tyre*	S	S	S
*Please note: The 147TSI spare wheel and tyre is speed restricted.			
Low tyre pressure indicator	S	S	S
Comfort and Convenience			
Armrest			
Front centre armrest with storage box, rear air outlets (2) and rear cup holders (2)	S	S	S
Rear seat centre armrest with load through provision	S	S	S
Air conditioning			
Dual zone climate control	S	S	S
Air quality sensor with automatic air recirculation	S	S	S
Dust and pollen filter	S	S	S
Cruise control	S	S	S
Cup holders			
Front (2), with bottle opener	S	S	S
Rear (2)	S	S	S
One litre bottle holders in front door pockets	S	S	S
Entry/warning reflectors in front and rear doors	S	S	S
Floor mats			
Front and rear, carpet	S	S	S
Front and rear, rubber	A	A	A
Fuel filler flap			
Electrically operated via switch on driver's door	S	S	S
Grab handles			
Soft fold away grab handles (4)	S	S	S
Headlights			
Halogen headlights with clear polycarbonate lens	S	S	S
Headlight-on warning buzzer	S	S	S
Internal headlight range adjustment	S	S	S
Low light sensor with automatic headlight function	S	S	S
Coming/leaving home function	S	S	S
Combined headlight and fog light switch	S	S	S
In car entertainment			
AM/FM security coded radio (RCD310) with MP3 compatible CD player	S	S	–
AM/FM security coded radio (RCD510) with 6½" touch screen display, SD card slot and MP3 compatible 6 disc CD changer, in dash	–	–	S
Audio functions mounted on steering wheel	S	S	S
Auxiliary input socket for external audio source in front centre console	S	S	S
Bluetooth® integrated hands free phone kit	A	A	A
iPod® adaptor	A	A	A
(replaces auxiliary input socket function & not available with optional CD changer)			
Speakers, front and rear (8)	S	S	–
Speakers, front and rear (10)	–	–	S
Instrumentation			
Speedometer & tachometer, electronic odometer and tripmeter, service interval display, digital clock, fuel & coolant gauges, low fuel warning light, and blue adjustable illumination	S	S	S

Specifications continued

	118TSI	103TDI	147TSI
Comfort and Convenience (continued)			
Interior highlights			
Charcoal inserts in dashboard and doors	S	S	–
Aluminium inserts in dashboard and doors	–	–	S
Chrome trim on instrument cluster and gearshift lever surround	S	S	S
Door sill scuff plates	A	A	A
Gearshift knob, gearshift gaiter and handbrake grip in leather	S	S	S
Stainless-steel sports pedal set	A	A	A
Interior lighting			
With time delay	S	S	S
Foot well illumination, driver and front passenger	S	S	S
Front reading lights	S	S	S
Rear passenger reading lights	S	S	S
Luggage compartment			
Automatic boot lid release	S	S	S
Luggage compartment light	S	S	S
Luggage compartment protection, moulded foam, moulded rubber	A	A	A
Shopping bag hooks	S	S	S
12 volt socket	S	S	S
Mirrors			
Automatic dimming interior rear-view mirror	S	S	S
Electrically heated and adjustable exterior mirrors	S	S	S
Automatic kerb function when reversing, passenger's side exterior mirror	S	S	S
Turn indicators with LED technology integrated in exterior mirrors	S	S	S
Parking distance sensors			
Audio volume level reduction when warning is activated	S	S	S
Rear parking distance sensors with audible warning	S	S	S
Power steering			
Electro-mechanical, vehicle speed and steering input sensitive	S	S	S
Seating			
Comfort front seats	S	S	–
Sports front seats	–	–	S
Height adjustment for front seats	S	S	S
Lumbar adjustment for front seats	S	S	S
Split folding rear seat backrest (60/40) with centre armrest and load through provision	S	S	S
Steering wheel			
3 spoke leather rimmed steering wheel	S	S	S
Audio and Multi-Function Display controls	S	S	S
Gear shift paddles (DSG only)	A	A	A
Height and reach adjustable steering wheel	S	S	S
Storage			
Chillable glove box with illumination	S	S	S
Centre console storage compartment (without CD changer)	S	S	S
Coin tray and 12 volt socket in console	S	S	S
Drawers under front seats	S	S	S
Front seat backrest storage pockets	S	S	S
Front door pockets with one litre bottle holders and rubber mats	S	S	S
Sunglass compartment in roof console	S	S	S
Trip computer			
Multi-Function Display (MFD Plus) – trip time, trip length, average speed, average and current fuel consumption, distance till empty and outside temperature, audio and convenience menus	S	S	S
Upholstery			
Comfort velour seats	S	S	–
Sports cloth seats	–	–	S
Vanity mirrors			
Driver's and passenger's side vanity mirrors	S	S	S
Illuminated on driver's and passenger's side	S	S	S
Wipers			
2 speed aero wipers with wash/wipe and vehicle speed sensitive intermittent wipe	S	S	S
Rain sensor	S	S	S

Specifications continued

	118TSI	103TDI	147TSI
Comfort and Convenience (continued)			
Windows			
Power front/rear, with roll-back function, driver with one-touch up-down	S	S	S
Remote operated convenience close and open feature	S	S	S
Sunblind for rear window	A	A	A
12V socket			
Centre console	S	S	S
Luggage compartment	S	S	S
Optional Equipment			
Alloy wheels			
Charleston 18 x 7½" with 225/40 R18 tyres (4) and sports suspension (lowered 15mm) from Volkswagen Individual	O	O	O
Please note: The spare wheel is speed restricted in combination with this option.			
Anti-theft alarm system with interior monitoring and tilt sensor	O	O	O
Automatic transmission			
6 speed Direct Shift Gearbox (DSG)	–	O	S
7 speed Direct Shift Gearbox (DSG)	O	–	–
Bi-Xenon headlights with automatic self levelling and headlight cleaning system	O	O	O
Electric glass sunroof, slide and tilt adjustable with sunblind	O	O	O
Front fog lights, mounted in lower bumper	O	O	S
Leather upholstery with individually heated front sports seats and electric lumbar adjustment	O	O	O
Leather upholstery with individually heated front sports seats and electric adjustment for driver's seat	O	O	O
Electric seat adjustment replaces storage drawer under driver's seat.			
Metallic/Pearl Effect paint	O	O	O
Satellite navigation system (RNS510)			
High-resolution touch screen display in 16:9 format, 3D map views, integrated 30 GB hard drive and SD card slot, DVD drive for the playback of audio CD/MP3 and video DVD and 10 speakers	O	O	O
6 disc CD changer mounted in centre console	O	O	O
Available only in conjunction with Satellite Navigation. This CD changer is not MP3 compatible.			

Technical Specifications

Engine	118TSI 1.4 litre TSI	103TDI 2.0 litre TDI	147TSI 2.0 litre TSI
Type	4 cylinder inline Twincharger petrol	4 cyl inline turbo charged diesel	4 cyl inline turbo charged petrol
Installation	Front transverse	Front transverse	Front transverse
Cubic capacity, litres/cc	1.4/1390	2.0/1968	2.0/1984
Bore/stroke, mm	76.5/75.6	81.0/95.5	82.5/92.8
Max power, kW @ rpm	118 @ 5800	103 @ 4200	147 @ 5100 - 6000
Max torque, Nm @ rpm	240 @ 1500 - 4500	320 @ 1750 - 2500	280 @ 1800 - 5000
Compression ratio	10:1	16.5:1	10.5:1
Fuel system	Bosch Motronic MED 9.5.10 FSI direct injection system	Bosch EDC 17 with common rail injection	Bosch Motronic MED 9.1 FSI injection system
Ignition system	Electronic	Compression	Electronic
Exhaust emission control	Exhaust gas recirculation, catalytic converter and lambda probes	Exhaust gas recirculation with oxidising catalytic converter and diesel particulate filter	Exhaust gas recirculation, Two 3 way Catalytic Converter with Lambda Probe
Emission level	EU IV	EU IV	EU IV
Fuel type (Recommended)	Premium unleaded 98 RON	Diesel 51CZ	Premium unleaded 98 RON

Technical Specifications (continued)

Engine	118TSI 1.4 litre TSI		103TDI 2.0 litre TDI		147TSI 2.0 litre TSI
Transmission	6 Spd Man	7 Spd DSG	6 Spd Man	6 Spd DSG	6 Spd DSG
Driven wheels	Front wheel drive		Front wheel drive		Front wheel drive
Performance					
0 – 100km/h, seconds	8.5	8.5	9.7	9.7	7.2
Fuel consumption*					
Combined, L/100km	6.8	6.6	5.9	6.0	8.0
CO ₂ emission g/km	159	153	153	165	192
Fuel tank capacity, litres	55	55	55	55	55

* Fuel consumption figures according to Australian Design Rule (ADR) 81/01.

The driving style, road and traffic conditions, environmental influences and vehicle condition can in practice lead to consumption figures which may differ from those calculated with these standards.

Running Gear	118TSI 1.4 litre TSI		103TDI 2.0 litre TDI		147TSI 2.0 litre TSI
Suspension					
Front axle	Independent, MacPherson struts with lower A-arms. Anti-roll bar. Sports Suspension (147TSI)				
Rear axle	Independent, four-link with coil springs. Anti-roll bar. Sports Suspension (147TSI)				
Steering					
Electro-mechanical power assisted rack & pinion steering					
Brake systems					
Anti-lock Braking System (ABS) with Electronic Brake-pressure Distribution (EBD), Brake Assist and Electronic Stabilisation Program (ESP)					
Brakes					
Front	Ventilated Discs				
Rear	Discs				
Turning Circle (m)					
10.9					
Weights					
	6 Spd Man	7 Spd DSG	6 Spd Man	6 Spd DSG	6 Spd DSG
Tare Mass kg	1375	1405	1435	1455	1430
Towing Capacity kg					
Braked	1400	1400	1400	1400	1400
Unbraked	690	690	690	690	690
Exterior Dimensions					
Overall length mm					
4554					
Width mm					
1781					
Height mm					
1459					
Wheelbase mm					
2578					
Track mm					
Front	1534				
Rear	1512				
Luggage Area Dimensions					
Volume (Rear seat upright) L					
527					
Floor length (Rear seat upright) mm					
1160					
Maximum width mm					
1364					
Width between wheel arches mm					
1009					
Height mm					
505					

Colours and Upholstery

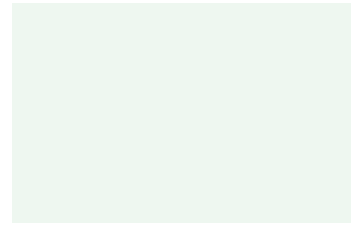
Colours



Deep Black Pearl Effect



Salsa Red



Candy White



Platinum Grey Metallic



Reflex Silver Metallic



Silver Leaf Metallic



Blue Graphite Pearl Effect

Please note: Metallic and Pearl Effect paint are optional at extra cost. The print process does not allow for exact reproduction of the exterior or the upholstery colours. For further details, please contact your Volkswagen Dealer.

Please contact your Volkswagen Dealer for further information on colours and upholstery combinations.

Upholstery

Standard Cloths



Anthracite Velour
Available on 118TSI and 103TDI

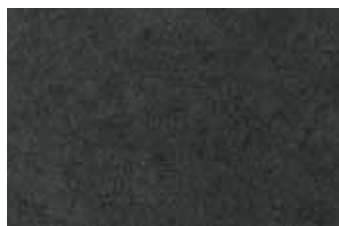


Anthracite Cloth
Available only on 147TSI

Optional Leathers



Pure Beige Leather #



Anthracite Leather

Optional Pure Beige Leather is not available in combination with Silver Leaf Metallic.

Owning a Volkswagen

Volkswagen New Vehicle Warranty

Every new Volkswagen passenger vehicle is covered by a 3-year/100,000km (whichever occurs first) manufacturer's warranty, which includes Volkswagen Assist (24hr roadside assistance). Every new Volkswagen passenger vehicle is also covered by a 3-year paintwork and 12-year anti-corrosion perforation warranty.

Volkswagen Assist – 24 Hour Roadside Assistance

As a valued customer, you can be assured that wherever you travel within Australia, you will have access to roadside assistance, 24 hours a day, 365 days a year. This is complimentary for the duration of the vehicle's original Volkswagen warranty period. You will receive help in the event of a breakdown or accident and if required, your vehicle will be mobilised or transported to an Authorised Volkswagen Repair Centre.

As a Volkswagen owner you will also have access to the additional benefits of accommodation and car rental if your vehicle cannot be mobilised within 24 hours, when you are over 100kms away from home. Volkswagen Roadside Assist can also be renewed at the expiry of the original warranty, ensuring ongoing coverage for your vehicle.

Volkswagen Extended Warranty

To give you added peace of mind and the assurance of added security, you have the option to extend the factory warranty to suit your ownership cycle. If your Volkswagen was purchased new by you, we can offer you a 36 month/60,000km extension on your already existing Volkswagen manufacturers Warranty. Alternatively if your vehicle is already outside the Volkswagen manufacturers warranty period we can also offer you an extension of your factory warranty. Have the assurance that your Volkswagen remains a Volkswagen. For further information regarding warranty and extending your vehicles factory warranty, please consult your local Volkswagen dealer, refer to your owner's handbook or visit www.volkswagen.com.au.

Volkswagen Service

Your Authorised Volkswagen Service Centre is part of Volkswagen's global Quality Management System, ensuring all dealers are certified to ISO 9001:2000 – an internationally recognised Quality Standard. Authorised Volkswagen Service Centres have factory trained Technicians equipped with the very latest diagnostic equipment, specialist tooling and Volkswagen Genuine Parts. An Authorised Volkswagen Service Centre undertakes work in accordance to factory specified guidelines and maintenance schedules.

Volkswagen Genuine Parts®

Volkswagen Genuine Parts® are designed for your vehicle and approved by Volkswagen, with particular regard to safety. The workmanship, dimensional accuracy and materials used in these parts comply with factory specifications. To ensure safety and reliability, Volkswagen recommends the use of Volkswagen Genuine Parts®. Volkswagen Authorised Dealers offer a 2-year warranty on Genuine Parts from the date of purchase.

Volkswagen Finance

Buying, Borrowing or Leasing, Volkswagen Finance will certainly make you think differently about financing and insuring your new Volkswagen. Committed to meeting the needs of Volkswagen drivers, across Australia, we offer a range of leasing, financing and insurance products, each with distinct advantages depending on your specific circumstances. Our packages are personalised to suit your individual requirements. You design your plan so that it meets your budgeting needs and can rest assured that there will be no surprises along the way. Speak to your local participating Volkswagen Dealer today to put together a financial solution that best suits your lifestyle.

Glossary

Anti-lock Braking System (ABS)

When braking, wheel speed sensors measure the road wheel speed and should one or more wheels start to lock the ABS system reduces brake pressure to that wheel. This prevents the wheels from locking during heavy or emergency braking, enabling the vehicle to remain steerable.

Anti-Slip Regulation (ASR)

ASR improves driving and steering characteristics by preventing the front wheels from spinning under acceleration. When a difference in driving wheel speed is detected (i.e. when one wheel starts to spin due to differences in road surfaces, e.g. due to water or dirt) the system automatically reduces engine torque. ASR is a switchable traction control system.

Brake Assist

During emergency braking, Brake Assist aids the driver by increasing the brake pressure automatically to a level exceeding the locking limit. The ABS is thus quickly brought into the operating range, which enables maximum vehicle deceleration to be achieved.

Direct Shift Gearbox (DSG)

DSG is a manual gearbox in which the gearshifts are controlled electronically. What makes the DSG unique is that it has 2 separate gear sets operated by 2 wet multi-plate clutches. The benefit of 2 gear sets and 2 multi-plate wet clutches is that one gear set and clutch is engaged driving the vehicle with the second clutch having already pre-selected the next gear awaiting for power to be transferred. As the next gear has already been pre-selected prior to power being applied, the gear change only takes 3-4 100ths of a second. There is virtually no interruption to power, traction or acceleration. The DSG also offers Tiptronic gear selection and sports mode.

Electronic Brake-pressure Distribution (EBD)

Electronic, more sophisticated means of regulating the ratio of front/rear brake pressure. Settings are varied according to driving and load conditions to ensure each wheel is braked to the optimum extent.

Electronic Stabilisation Program (ESP)

ABS and ASR traction control systems are integrated into the Electronic Stabilisation Program (ESP). In short, ESP helps ensure that the vehicle goes where you steer it even in extreme driving conditions. The ESP system constantly compares the actual movement of the vehicle with pre-determined values and should a situation arise where the vehicle starts to skid, ESP will apply the brakes to individual wheels and automatically adjust the engine's power output to correct the problem. ESP prevents the vehicle from losing control when trying to avoid an accident, for example. It also prevents spinning off on a curve due to either understeer or oversteer.

Hill Start Assist (HSA)

Hill Start Assist (HSA) holds the vehicle when the foot brake is released by temporarily locking the brake pressure (for a maximum of 1.5 seconds) to provide comfortable starting-off without rolling back. Hill Start Assist (HSA) operates on inclines greater than 5% and is fitted in combination with the Direct Shift Gearbox (DSG).

Volkswagen is distributed by Volkswagen Group Australia Pty Ltd, The Lakes Business Park, 6 Lord Street, Botany, NSW 2019. ABN 14 093 117 876. Specifications are as planned at May 2008, for Model Year 2009 and are subject to change without notice or obligation. Cars and accessories shown may not depict Australian specifications. Fuel consumption figures according to Australian Design Rules (ADR) 81/01. All Volkswagen approved parts and accessories are warranted for 2 years/unlimited kilometres. All information in this brochure is correct at the time of publication, however variations may occur from time to time and Volkswagen, in so far as it is permitted by law to do so, shall not be liable in any way as a result of any reliance by any person on anything contained in this brochure. The colours shown in this brochure are indicative only and may vary from actual items owing to the printing process. Authorised Volkswagen dealers will provide up-to-date information on model application, design feature, prices and availability on request.

Volkswagen Insurance & Volkswagen Extended Warranty are provided by Allianz Australia Insurance Limited (Allianz), AFS Licence No. 234708, ABN 15 000 122 580. In arranging this insurance Volkswagen Financial Services Australia Limited, ABN 20 097 071 460 & Volkswagen Group Australia Pty Ltd, ABN 14 093 117 896 and the authorised dealers act as agents of Allianz and not as your agent. Volkswagen Finance is a trading name of Volkswagen Financial Services Australia Limited. Locked Bag 5009, Alexandria NSW 2015. Tel: 02 9695 6311.



Das Auto.

Volkswagen Jetta

Publication: VGA4010E

Internet: www.volkswagen.com.au