

Jimmy **SIERRA**



Way of Life!

THE ORIGINAL RUGGED 4X4



*Optional spare wheel disc shown.

It's not where you go that matters, it's how you get there that counts. The original rugged Jimny Sierra will take you where you want to go and get you into places the others just can't. Whether it's around town or your favourite secluded beach, campsite or fishing ground.

HANDLE ANYTHING, GO ANYWHERE

Got plans to go somewhere? Jimny Sierra can take you there. It's got room for 4 adults or if you're going solo, fold down the seats and toss all your gear in the back.

Its 16 valve 1.3L VVT engine has plenty to power you through the bush and the city. And its high performance braking system will pull you up sharp.

Make no mistake, the Jimny Sierra is a true 4x4. Built on a sturdy, 3 section, ladder-frame chassis, means you can push it further and harder than those "soft-roaders" you see around town. The live front and rear axles combined with 3-link coil suspension and separate shockers, give you better ground clearance in any environment. And like any true 4x4, its wheels are set at the extreme corners of the vehicle, giving you the approach and departure angles you need to tackle hills and extreme slopes with ease.

Add to this Suzuki's renowned Drive Action 4WD system that lets you switch from 2WD to 4WD while in motion and there's almost nothing the Jimny Sierra can't tackle.



Jimny Sierra's 16 valve, 1.3 litre VVT engine has a thirst for adventure, not fuel.



40 YEARS OF 4X4

In 1968, Suzuki introduced the world to rugged lightweight 4x4s that could go anywhere and do anything.

1968

Suzuki launches the LJ10, Japan's first mass-produced 4x4. It has only 3 seats - the spare tyre sits behind the passenger's seat.

1974

The LJ50 arrives. It has a 550cc three cylinder, water-cooled engine that gives better power than the LJ10.

1977

The final LJ model, the LJ80, has a 797cc four cylinder engine. It's available in 3 variants - hard top, soft top and utility.

1982

The SJ410 is launched with a bigger engine and sportier features - soon earning a reputation as the off-road giant killer.

1984

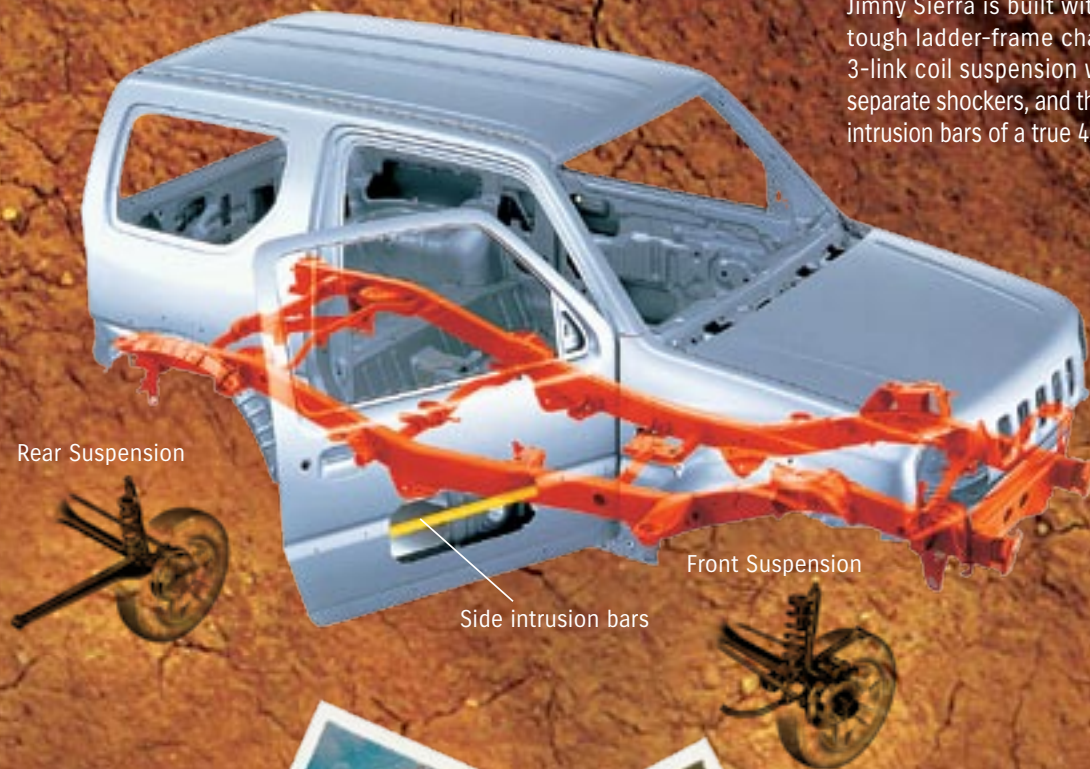
The Sierra is released in Australia ('Samurai' in the US). It becomes the top-selling convertible 4x4 in the US.

1998

Suzuki releases the first Jimny in Australia. It features greater off-road stability and even better traction.

2008

The Jimny Sierra becomes the perfect go anywhere performer - great for zipping around town before heading off to your favourite camping spot.



Jimny Sierra is built with a tough ladder-frame chassis, 3-link coil suspension with separate shockers, and the side intrusion bars of a true 4x4.





■ Reclining and folding rear seat



■ Dual SRS airbags



■ Power windows

■ Air conditioning

■ CD player

■ Push button 4WD selector

■ 12v accessory socket

■ Power mirrors

Enhance Your Original, Rugged 4x4

Genuine 4x4 accessories will add to your Jimny Sierra adventures.



Rear Upper Spoiler



Roof Racks



Front Mud Flap Moulded



Rear Mud Flap Moulded



Side Steps



Spare Wheel Cover

JIMNY SIERRA ACCESSORIES

DESCRIPTION		PART NUMBER
EXTERIOR		
Fog lamps		990E0-84A02
Headlamp protectors (Front)		990AA-00109-001
Weathershields	RHS	990AA-00209-006
Weathershields	LHS	990AA-00209-007
Bonnet protector		990AA-00309-001
Dust deflector	Rear	990AA-00409-001
Side step		99000-990YB-784
Mud flap flat	Front	990E0-76J20
Mud flap flat	Rear	990E0-76J30
Exhaust tip	Chrome	99000-99069-402
Spoiler	Upper rear	99000-990YC-582
Mud flap moulded	Front	99000-99056-JBR
Mud flap moulded	Rear	99000-99004-Z60
Tow bar	1100kg Braked, 350kg Unbraked	99000-990YV-A12
Spare tyre wheel disc		72820-65D80-Z2S
Spare wheel cover	Locking full cover	990AA-01309-002
INTERIOR		
Floor mat	MT	990AA-00809-001
Floor mat	AT	99000-00809-002
First aid kit	Small	990AA-02010-006
First aid kit	Large	990AA-02010-003
Door lock knob	Chrome (set of 2)	99000-99079-200

JIMNY SIERRA ACCESSORIES

DESCRIPTION	PART NUMBER
AUDIO ENTERTAINMENT	
iPOD Interface	990AA-01216-125
SATELLITE NAVIGATION UNITS	
Garmin NUVI 260	990AA-01216-260
Garmin NUVI 260W	990AA-01216-26W
Garmin NUVI 310	990AA-01216-310
Garmin ZUMO 550	990AA-01210-550
ROOF	
Roof Racks	99000-990YT-J01
Aerial Mounting Kit	990AA-00715-AMK
Bike Carrier Fork Mount	990AA-00715-BC2
Ski clips 1 pair	990AA- 00715-SC1
Locking Arm (2 pair skis)	990AA- 00715-LA2
Locking Arm (3 pair skis)	990AA-00715-LA3
Locking Arm (4 pair skis)	990AA-00715-LA4
Locking Arm (6 pair skis)	990AA-00715-LA6
Tie Down Attachments	990AA-00715-TDA
Tie Down Straps Cam Lock (1 pair)	990AA-00715-TDC
Tie Down - Ratchet (1 item)	990AA-00715-TDR
Tie Down Slides (1 pair)	990AA-00715-TDS
Carrier - Water Craft	990AA-00715-WCC
Holder - Water Craft	990AA-00715-WCU
Luggage Tray - Small (1180x920x95)	990AA-00715-LTC
Luggage Box - 360 Litre, LH Open	990AA-00716-360

SPECIFICATIONS

JIMNY SIERRA SPECIFICATIONS

Transmission	5 speed manual	4 speed automatic
--------------	----------------	-------------------

DIMENSIONS

Overall length	mm	3,645
Overall width	mm	1,600
Overall height	mm	1,705
Wheelbase	mm	2,250
Track	Front mm	1,355
	Rear mm	1,365
Ground clearance	mm	190

WEIGHTS**

Kerb weight (min)	kg	1,060	1,075
Gross vehicle mass	kg	1,420	1,420
Towing capacity	braked (kg)	1,100	
	unbraked (kg)	350	
Tow ball download	kg	75	

ENGINE

Type	M13A VVT
Number of cylinders	4
Number of valves	16
Piston displacement	1,328cc
Bore stroke	78.0 x 69.5
Compression ratio	9.5:1
Maximum output	62.5kW / 6,000rpm
Maximum torque	110Nm / 4,100rpm
Fuel distribution	Multipoint injection

FUEL CONSUMPTION

Combined litres / 100km	7.3	7.8
CO ₂ emissions grams / km	174	184

TRANSMISSION

Gear ratio	1st	4.425	2.875
	2nd	2.304	1.568
	3rd	1.674	1.000
	4th	1.190	0.696
	5th	1.000	-
	Reverse	5.151	2.300
Final gear ratio		4.300	4.090
Transfer	High	1.000	1.320
	Low	2.002	2.643

CHASSIS

Steering	Ball & nut	
Brakes	Front	Discs
	Rear	Drums
Suspension	Front	3-Link rigid with coil spring
	Rear	3-Link rigid with coil spring
Tyres	205 / 70R15	
Minimum turning radius	4.9m	
Seating capacity	4	
Fuel tank capacity	40L	

ADR81/01 Test Results

**Weights are nominal and will vary depending on options and accessories

JIMNY SIERRA EQUIPMENT

COMFORT

Air conditioning	•
Radio / CD player	•
Power steering	•
Power windows	•
Remote keyless entry	•
Central door locking	•
Electrically adjustable outside mirrors	•

INSTRUMENT PANEL

Tachometer	•
Tripmeter	•
Digital clock	•
Push button 4WD selector	•

INTERIOR

Interior lights (3 positions)	•
Sun visors with vanity mirrors (passenger's side)	•
12 volt accessory socket	•
Day / night rearview mirror	•
Sliding and fully reclining front seats	•
Adjustable front / rear seat head restraints	•
Walk-in sliding seat system (passenger side)	•
Reclining and folding rear seats	•
Moulded, cloth accented door trim	•
Moulded rear quarter trim with pocket / cup holder	•
Door pockets	•
Centre console with cup holder	•
Internal fuel lid opener	•

SAFETY AND SECURITY

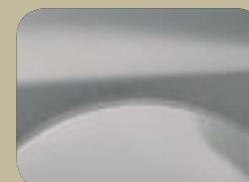
Driver & Passenger front SRS airbags	•
3-point ELR seatbelts (x4)	•
Height adjustable front seatbelt anchorage	•
Side impact protection beams	•
Engine immobiliser	•
ABS	•

JIMNY SIERRA EQUIPMENT

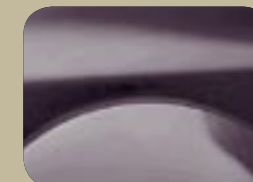
EXTERIOR

Halogen headlights	•
2 speed intermittent front wiper	•
Intermittent rear wiper and washer	•
Rear window demister	•
Green tinted glass window	•
Coloured bumper / body side moulding	•
Alloy wheels	•
Roof rails	•
Free wheel hubs (vacuum hubs)	•
- : Standard	

COLOUR SPECIFICATIONS



Silky Silver Metallic*



Twilight Purple*



Superior White



Phoenix Red*



Bluish Black Pearl*

*Additional premium/metallic paint charge.



Way of Life!



All care is taken to ensure the accuracy of this brochure at the time of publication approval. Specifications, features, prices and model availability may vary from State to State and may change without notice. Always consult your authorised Suzuki Dealer or refer to www.suzuki.com.au for the latest details on all models. SUZUKI AUSTRALIA will not be held liable for any loss as a result of reliance on the content of this brochure, whether in negligence or otherwise. Vehicles are shown for illustrative purposes only and may not depict exact Australian specifications. Published October 2008. SZA2952

www.suzuki.com.au



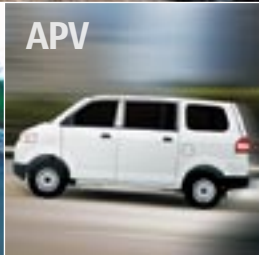
SX4



GRAND VITARA



SWIFT



APV