



Das Auto.

# Golf BlueMotion



---

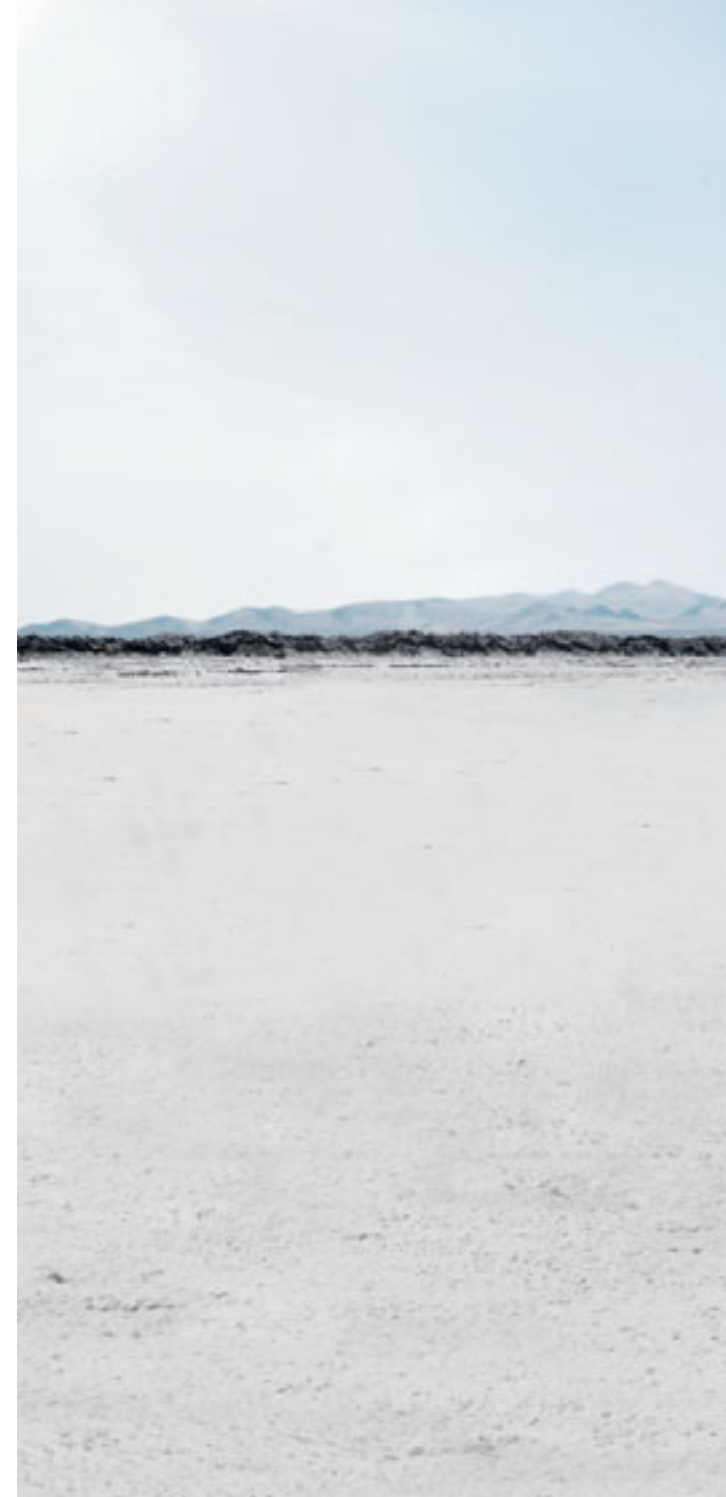
# Introducing the Golf BlueMotion.

The good news is, the Golf BlueMotion is first and foremost a Golf. World Car of the Year in 2009, the Golf is a genuine automotive icon. The addition of BlueMotion Technologies only makes the package more compelling, adding advanced systems to minimise fuel consumption and emissions without sacrificing performance, looks or driving enjoyment.

So just what is the Golf BlueMotion? Powered by a four-cylinder, 1.6-litre turbocharged diesel engine that delivers 77kW of power and a generous 250Nm of torque, the Golf BlueMotion is a car for drivers who enjoy getting from A to B. And with fuel consumption of just 3.8L/100 km and emissions of just 99g/km, it's also a car for drivers who care about the planet.

It's also a no-compromise car when it comes to the details. From its unique interior fit-out and exclusive paint option to its lowered suspension and optimised aerodynamics, it looks like a sporty Golf variant. The MFD (Multi-Function Display) and MP3-compatible radio/CD player, air conditioning, height adjustable driver seat and safety package ensure every trip is as comfortable as the last. Rounding out the package are the BlueMotion Technologies themselves. From the optimised gear ratios to the innovative Start/Stop system, it's a car that sips rather than slurps its fuel.

The Golf BlueMotion demonstrates Volkswagen's commitment to ecological sustainability, fuel efficiency and low emission motoring. It is a car that combines consumption-reducing technology, incredible efficiency and low emissions with the fun-to-drive spirit of Volkswagen.







# BlueMotion.

BlueMotion expresses Volkswagen's deep commitment to sustainability. Blue represents Volkswagen and also the elements that need to be protected: water and air. Motion represents the need to keep moving towards the future and to protect the earth's resources for coming generations. Bringing these together into the BlueMotion concept was a simple, logical and elegant solution.

But of course BlueMotion is more than just an abstract concept; it's also a set of practical, real-world technologies, available today, that help to reduce the Golf BlueMotion's fuel consumption and emissions.

There are six key technologies that define the Golf BlueMotion: Gear recommendation, optimized gear ratios, optimised aerodynamics, the Brake Energy Recuperation system, the Start/Stop System, and tyres with optimised rolling resistance.

It works because it looks, drives and feels like any other car. The day-to-day driving experience is what you'd expect from any Volkswagen. But beneath the skin all its technologies are working hand-in-hand to keep your fuel consumption and emissions low.

## BlueMotion Technologies

### 01. Gear recommendation

A vehicle's fuel consumption doesn't just depend on its technology, but also on the driver's style. The gear recommendation system monitors the vehicle and suggests the most appropriate gear on the multi-function display with an arrow pointing up or down.

### 02. Optimised gear ratios

Allowing a car's engine to rev too hard wastes fuel. The Golf BlueMotion's 5-speed manual transmission features higher gear ratios that reduce revs at any given speed.

### 03. Optimised aerodynamics

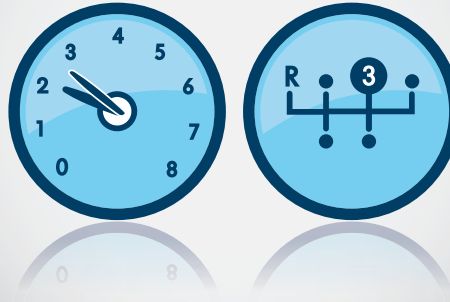
Any car expends a lot of energy (and burns a lot of fuel) pushing its way through the air. Volkswagen's engineers have optimised the Golf BlueMotion's shape to minimise drag. This includes aerodynamic bodyside sills and the shape of the rear roof spoiler. The radiator grille has also been re-designed, to improve airflow and reduce drag.

### Gear Recommendation



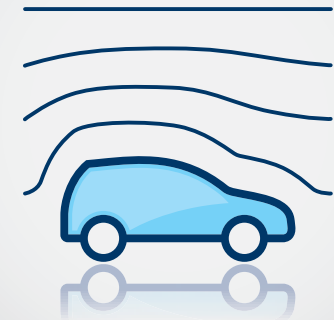
01

### Optimised Gear Ratio



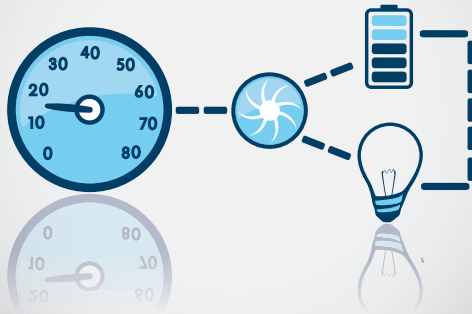
02

### Optimised Aerodynamics



03

### Brake Energy Recovery (Recuperation)



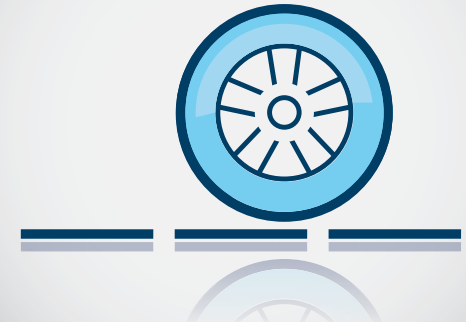
04

### Start / Stop System



05

### Tyres With Optimised Rolling Resistance



06

#### 04. Brake Energy Recuperation System

Brake energy recuperation (recovery) means the battery is charged when the engine is under minimal or no load. So when coasting or braking, the battery is supplied with plenty of power, but on accelerating, almost none at all.

#### 05. Start/Stop System

The Start/Stop System automatically stops the engine when the car is stationary, and the (manual) gearbox is in neutral. It starts the engine when the clutch is depressed. It can be turned on or

off and automatically ceases operation when the battery is low on charge or if there are other pre-conditioned requirements that have not been met.

#### 06. Tyres with optimised rolling resistance

Volkswagen has equipped the Golf BlueMotion with Low Rolling resistance tyres with a silica compound. Low-rolling resistance tyres minimize wasted energy as a tyre rolls, thereby decreasing required rolling effort.



# Exterior.

## Form, meet function.

What do you think a fuel-efficient car should look like? At Volkswagen, we think it should look like the other cars in our range – aerodynamic, stylish and a design statement in its own right. But its design should also be functional, contributing to the vehicle's design goal of minimising fuel consumption.

Any good designer will tell you that to be successful, form must follow function. With the Golf BlueMotion, the two work in perfect harmony, producing a vehicle that looks great while meeting every design and usability challenge we could throw at it.



### 01. Optimised aerodynamics

The Golf BlueMotion looks good, but that's only half of the story. Not only is a stylish car, it's also a slippery one. Good aerodynamics help a car to reduce drag, making it easier for it to push its way through the air. The Golf BlueMotion has received attention all over, but particular improvements have been made to the nose (with its airflow-optimised grille), the roofline (including the spoiler) and the sides (with more aerodynamic sills).

### 02. Wellington 15" alloy wheel

Stylish 'Wellington' 15-inch alloy wheels, fitted with low rolling resistance tyres.

### 03. Gloss black and chrome radiator grille

Stylish black and chrome grille that helps direct and optimise airflow.

### 04. Optional paint finishes

The Golf BlueMotion is also available with metallic or pearl effect paint finishes, to match your preferences. Exclusive to the Golf BlueMotion is the new Glacier Blue metallic colour.

### 05. Daytime driving lights and dark tinted taillights

Daytime driving lights and dark tinted taillights will keep other drivers aware of your every move.

### 06. Front and rear BlueMotion badging

The stylish BlueMotion badge is a subtle reminder that this is a car like no other.





# Interior.

## Maybe you really can have it all.

There's no need for an ecologically responsible car to be uncomfortable. At Volkswagen, we believe that every car we offer has to meet certain standards of fit and comfort, and to exceed our customers' expectations of quality and presentation. With the Golf BlueMotion, we had the chance to demonstrate that we could be as uncompromising with occupants' comfort and amenity as we were with technology and fuel efficiency.



### 01. Unique BlueMotion cloth upholstery

The first thing you'll notice when you open the doors is the unique BlueMotion cloth upholstery. It's a subtle statement, but one we think was well worth making. Hard-wearing and durable, the seats are designed to provide ergonomic support and maximum comfort. The driver seat is height-adjustable to ensure you're ready for the road ahead, no matter how long (or short) the drive.

### 02. RCD310 radio with MP3 compatible CD player and auxiliary input socket

The console includes an RCD310 audio system, with MP3 compatible CD player and auxiliary input socket, so you can enjoy your favourite tunes no matter what media they're on.

### 03. Multi-function leather steering wheel

Drivers will also enjoy the leather-bound, height and reach adjustable, multi-function steering wheel. The option our designers chose has combined usability with user comfort. The most-used controls are literally at your fingertips so you can concentrate on the road ahead, meaning you'll arrive safe, relaxed and feeling great.

### 04. Multi-function Display Plus (MFD Plus) including, gear shift indicator and Start/Stop system

The innovative Multi-Function Display Plus puts critical information at your fingertips. This information system includes the gear shift indicator, which further helps you to keep your fuel consumption to a minimum. It also displays the Stop/Start System's current status.

### 05. Decorative highlights

Detail touches, like the titanium decorative trim and chrome highlights emphasise its quality and provide the finishing touches to an interior that's stylish as well as safe and comfortable.



# Safety.

## Safety first, last and always.

There's nothing more important than the safety of you and your passengers. And you'll find when you drive a Golf BlueMotion, safety has been considered from almost every angle. A broad range of passive and active safety systems have been included to help avoid accidents, as well as protecting you if one happens. These help ensure every drive you take is a safe one.

### Active Safety.

#### 01. Traction Control

Traction control helps you maintain control of your vehicle even in difficult driving situations. The Golf BlueMotion has three key technologies in this area: Electronic Stabilisation Program (ESP), Electronic Differential Lock (EDL) and Anti Slip Regulation (ASR). These systems work in concert to improve grip, help prevent wheel spin and adjust engine power automatically as road conditions and your driving situation require.

#### 02. Braking Control (Brake Assist, ABS and EBD)

Of course, it's also important to be able to bring your car to a stop with safety and confidence. To assist in this area, the Golf BlueMotion includes a trio of braking control systems – Anti-lock Braking System (ABS), Brake Assist and Electronic Brake-pressure Distribution (EBD) – that together help protect driver and passengers in all conditions.



Image shown is of a Golf (not Golf BlueMotion) and is shown for illustrative purposes only in order to illustrate some of the safety features found within the Golf BlueMotion.

## **Passive Safety – Design measures taken to protect the occupants of vehicles from injury, or to reduce the risk of injury.**

### **03. Airbags**

The Golf BlueMotion features seven airbags – front, front side and front and rear curtain. An airbag is dedicated to protect the driver's knees so that in the event of a crash, the resulting forces are distributed more evenly and less stress is transferred to the body.

### **04. Safety optimised head restraints**

Specially contoured front seat head restraints work in conjunction with the seatbacks to control head and upper body movements in the event of a collision, reducing whiplash injuries.

### **05. Seatbelts**

All seats feature three-point seatbelts, while the front seats also have belt pre-tensioners (which tighten the belt on impact) and belt force limiters (which reduce forces on passengers). These help position the body so as to minimise injuries in the event of a crash.

### **06. Crumple zones**

Crumple zones provide an additional method of protection against sudden impacts. In the event of a collision, the bodywork and chassis will progressively deform, absorbing the impact's energy and reducing cabin intrusions.

## Specifications.

### Safety and Security

	Golf BlueMotion
<b>Airbags</b>	
Driver and front passenger airbags	S
Driver's knee airbag	S
Driver and front passenger side airbags	S
Curtain airbags, front and rear	S
<b>Anti-theft</b>	
Electronic engine immobiliser	S
<b>Body</b>	
Fully galvanised with 12 year anti-corrosion perforation warranty	S
Door side impact protection	S
Rigid safety cell with front and rear crumple zones	S
<b>Brakes</b>	
Anti-lock Braking System (ABS)	S
Brake Assist	S
Electronic Brake-pressure Distribution (EBD)	S
Hill Start Assist (HSA)	S
Entry/warning reflectors in front and rear doors	S
First aid kit	A
<b>Head restraints</b>	
Front safety optimised head restraints, height adjustable	S
Rear head restraints height adjustable and removable (3)	S
<b>Lighting</b>	
Daytime driving lights, halogen light integrated in headlight housing	S
Fog lamp, rear	S
<b>Locking</b>	
Remote central locking with deadlock mechanism	S
2 stage unlocking (programmable)	S
Automatic locking after takeoff (programmable)	S
One touch lock / unlock for driver	S
Child safety locks on rear doors	S
Fuel filler flap lock / unlock by remote, push to open	S

### Safety and Security cont.

	Golf BlueMotion
<b>Seat belts</b>	
Front height adjustable with pre-tensioners and belt force limiters	S
Visual and acoustic warning for driver and front seat passenger seat belts not fastened	S
3 point seat belts for all passengers	S
Child seat anchor points mounted on back of rear seat (3)	S
<b>Traction control</b>	
Anti-Slip Regulation (ASR)	S
Electronic Differential Lock (EDL)	S
Electronic Stabilisation Program (ESP)	S
<b>Exterior Equipment / Styling</b>	
<b>Body enhancements</b>	
Body coloured bumper bars and door handles	S
Body coloured outer rear view mirrors	S
Body coloured lower front spoiler and rear roof spoiler	S
B pillar decorative strip, carbon look	A
Exposed exhaust tail pipe	S
Radiator grille highlights in chrome	S
Widened side sill panels in body colour	S
Rear hatch trim, chrome or carbon look	A
<b>Paint</b>	
Metallic or Pearl Effect paint finish	O
<b>Protection</b>	
Bonnet protector	A
Headlight protectors	A
Loading sill protection, clear or stainless-steel look	A
Mudflaps, rear	A
Slimline weather shields	A
<b>Roof</b>	
Roof bars	A
Bicycle, kayak, ski, surfboard and snowboard holders	A
Luggage rack	A
Ski and luggage box	A

## Exterior Equipment / Styling cont.

	Golf BlueMotion
<b>Suspension</b>	
Lowered sports suspension	S
<b>Tinted glass</b>	
Darkened rear tail light clusters	S
Heat insulating tinted glass	S
<b>Towbar</b>	
Towbar vertical hitch with 7-pin flat trailer connector and removable tongue	A
<b>Wheels</b>	
Alloy wheels (Wellington) 15 x 6½" with 195/65R15 tyres	S
Alloy wheels (various designs) 15", 16", 17" and 18"	A
Please consult your Volkswagen Dealer for correct wheel and tyre fitment by model	
Anti-theft wheel bolts	S
Low tyre pressure indicator	S
Low rolling resistance tyres (4)	S
Tyre mobility set, 12-volt compressor and tyre sealant	S
Weight and space saving spare wheel	
The weight and space saving spare wheel Volkswagen Genuine Accessory is supplied with a vehicle jack and wheel brace	A
<b>Comfort and Convenience</b>	
<b>Armrest</b>	
Front centre armrest with storage box, rear air outlets (2) and rear cup holders (2)	S
<b>Air conditioning</b>	
Air conditioning, manual control	S
Dust and pollen filter	S
<b>Cruise control</b>	
	S
<b>Cup holders</b>	
Front (2), with bottle opener	S
Rear (2)	S
Bottle holders in front door pockets	S
<b>Driver assistance systems</b>	
Parking distance sensors, rear	A
<b>Floor mats</b>	
Front and rear, carpet	A
Front and rear, rubber	A

## Comfort and Convenience cont.

	Golf BlueMotion
<b>Grab handles</b>	
Soft fold away grab handles, front and rear	S
<b>Headlights</b>	
Combined headlight and fog light switch	S
Halogen twin headlights with daytime driving lights and clear polycarbonate lens	S
Headlight-on warning buzzer	S
Internal headlight range adjustment	S
<b>In car entertainment and technology</b>	
AM/FM security coded radio (RCD310) with MP3 compatible CD player	S
AM/FM security coded radio (RCD510) with 6½" touch screen display, MP3 compatible SD card slot and 6 disc CD changer (in dash)	A
Audio functions mounted on steering wheel	S
Auxiliary input audio socket in front centre console	S
Bluetooth® phone connectivity	
There is a variety of Volkswagen Genuine Accessory Bluetooth® solutions available. Please consult your Volkswagen Dealer for further information	A
<b>Speakers, front and rear (8)</b>	
Satellite navigation system (RNS510)	
High-resolution touch screen display in 16:9 format, 2D, topographical and 3D (bird's eye) map views, voice control for navigation and radio functions, integrated 30 GB hard drive for storing music and navigation data, SD card slot and single DVD drive for the playback of audio CD/MP3	A
<b>Instrumentation</b>	
Speedometer & tachometer, electronic odometer and tripmeter, service interval display, digital clock, fuel and coolant gauges, low fuel warning light, brake pad wear indicator, white adjustable illumination with red needles	S
<b>Interior highlights</b>	
'Titanium' inserts in dashboard and doors	S
Brushed chrome trim on instrument cluster, vent surrounds and gearshift lever surround	S
Chrome highlight trim to headlight, mirror adjustment and power window switches	S
Door sill scuff plates	A
Gearshift knob in leather	S
Sports gearshift knob	A
Stainless-steel pedal set	A
<b>Interior lighting</b>	
With time delay	S
Front reading lights (2)	S
Rear passenger reading light	S

## Specifications.

### Comfort and Convenience cont.

	Golf BlueMotion
<b>Luggage compartment</b>	
Cargo organiser, luggage area tub storage with internal dividers and lid	A
Load restraining hooks	S
Luggage compartment light	S
Luggage compartment protection: moulded foam, rubber or plastic tub	A
Luggage net	A
<b>Mirrors</b>	
Electrically heated and adjustable exterior mirrors	S
LED turn indicators integrated in exterior mirrors	S
<b>Power steering</b>	
Electro-mechanical, vehicle speed and steering input sensitive	S
<b>Seating</b>	
Height adjustment for driver seat	S
Split folding rear seat backrest (60/40)	S
<b>Steering wheel</b>	
3 spoke leather rimmed steering wheel	S
Audio and multi-function display controls	S
Height and reach adjustable steering wheel	S
<b>Storage</b>	
Centre console storage compartment	S
Chillable glove box with illumination, lockable	S
Coin tray and 12 volt socket in console	S
Compartment in roof console	S
Driver's side dashboard compartment with lid	S
Front door pockets with bottle holders	S
<b>Transmission</b>	
Gearshift recommendation indicator	S
<b>Trip computer</b>	
Multi-Function Display (MFD Plus) – driving time, trip length, average and digital speed, average and current fuel consumption, distance till empty, speed warning function, vehicle status, audio and convenience displays	S
<b>Upholstery</b>	
Cloth seats	S

### Comfort and Convenience cont.

	Golf BlueMotion
<b>Vanity mirrors</b>	
Driver's and passenger's side vanity mirrors	S
<b>Wipers</b>	
2 speed aero wipers with wash / wipe and vehicle speed sensitive intermittent wipe	S
Rear window with wash/wipe and intermittent wipe	S
<b>Windows</b>	
Power front / rear, with roll-back function, driver with one-touch up-down	S
Remote operated convenience close and open feature	S
Sunblind for rear window	A
Sunblind for rear side window	A
<b>12V socket</b>	
Centre console	S

### Technical Specifications

Engine	1.6 litre TDI
Type	4 cylinder inline turbo direct injection diesel with engine Start / Stop system*
Installation	Front transverse
Cubic capacity, litres/cc	1.6 / 1598
Bore / stroke, mm	79.5 / 80.5
Max power, kW @ rpm	77 @ 4400
Max torque, Nm @ rpm	250 @ 1500 – 2500
Compression ratio	16.5:1
Fuel system	Simos common rail
Ignition system	Compression
Exhaust emission control	Exhaust gas recirculation with oxidising catalytic converter and diesel particulate filter
Emission level <sup>^</sup>	EU 5 <sup>^</sup>
Fuel type (Recommended)	Diesel 51CZ

## Technical Specifications cont.

	Golf BlueMotion
<b>Transmission</b>	5 Speed manual
Driven wheels	Front wheel drive
<b>Performance#</b>	
0 – 100 km/h, seconds	11.3
<b>Fuel consumption**</b>	
Combined, L/100km	3.8
Urban, L/100km	4.7
Extra Urban, L/100km	3.4
CO <sub>2</sub> emission g/km	99
Fuel tank capacity litres	55
<b>Running Gear</b>	
Suspension	
Front axle	Independent, MacPherson struts with lower A-arms. Anti-roll bar. Sports suspension lowered approximately 15mm
Rear axle	Independent, four-link with coil springs. Anti-roll bar. Sports suspension lowered approximately 15mm
Steering	Electro-mechanical power assisted rack & pinion steering
Brake systems	Anti-lock Braking System (ABS) with Electronic Brake-pressure Distribution (EBD), Brake Assist and Electronic Stabilisation Program (ESP). Brake energy recuperation
Brakes	
Front	Ventilated Discs
Rear	Discs
Turning circle (m)	10.9
<b>Weights</b>	
Tare Mass, Kg	1234

## Technical Specifications cont.

	Golf BlueMotion
Towing Capacity, Kg	
Braked†	1200
Unbraked	640
Towbar load limit, Kg	75
<b>Exterior Dimensions</b>	
Overall length, mm	4199
Width, mm	1785
Height, mm	1479
Wheelbase, mm	2574
Track mm	
Front	1540
Rear	1513
<b>Luggage Area Dimensions#</b>	
Luggage area volume L	
Rear seat upright	350
Rear seat folded	1305
Luggage area floor length	
Rear seat upright	828
Rear seat folded	1581
Luggage area width mm	
At widest point	1044
At narrowest point	1006
Luggage load height mm	
To luggage cover	556
To roof lining	927

^ Emission level according to European Regulation (EC) No. 715/2007 and Regulation (EC) No. 692/2008.

\*The Start/Stop system is designed to reduce fuel consumption and CO<sub>2</sub> emissions. It achieves this by automatically switching off the engine while the vehicle is stationary and then starting it again automatically when the driver wants to drive off. There are certain operating conditions where the Start/Stop system is deactivated (e.g. during engine warm-up), please refer to the owner's manual for full operating information.

# Please note figures are sourced from overseas data where equipment levels by model variant may vary.

\*\* Fuel consumption figures according to Australian Design Rule (ADR) 81/02.

The driving style, road and traffic conditions, environmental influences, the fitment of accessories and vehicle condition can in practice lead to consumption figures which may differ from those calculated with these standards.

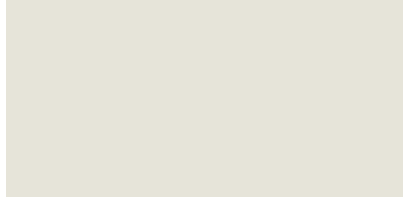
† With trailer brakes up to a gradient of 12%.



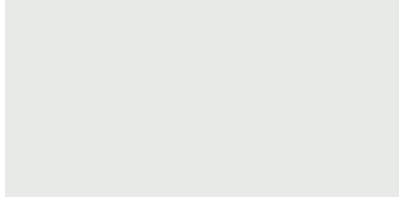


---

# Colours.



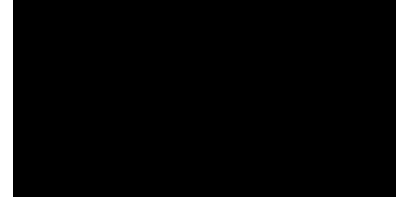
Candy White



Reflex Silver Metallic



United Grey Metallic



Deep Black Pearl Effect



Glacier Blue Metallic

# Upholstery.



Black / Blue cloth seat upholstery



Please note Metallic and Pearl Effect paint are optional at additional cost. The print process does not allow for exact reproduction of the exterior or the upholstery colours. Please contact your Volkswagen Dealer for further information on colours and upholstery combinations.

---

# Glossary.

## **Anti-lock Braking System (ABS)**

When braking, wheel speed sensors measure the road wheel speed and should one or more wheels start to lock the ABS system reduces brake pressure to that wheel. This prevents the wheels from locking during heavy or emergency braking, enabling the vehicle to remain steerable.

## **Anti-Slip Regulation (ASR)**

ASR is a switchable traction control system that prevents the wheels from spinning under acceleration by reducing engine torque.

## **Brake Assist**

During emergency braking, Brake Assist aids the driver by increasing the brake pressure automatically to a level exceeding the locking limit. The ABS is thus quickly brought into the operating range, which enables maximum vehicle deceleration to be achieved.

## **Electronic Brake-pressure Distribution (EBD)**

Electronic, more sophisticated means of regulating the ratio of front/rear brake pressure. Settings are varied according to driving and load conditions to ensure each wheel is braked to the optimum extent.

## **Electronic Differential Lock (EDL)**

EDL improves driving and steering characteristics when accelerating on road surfaces where each wheel has a different degree of traction. The system operates automatically and is combined with the ABS system. Using the ABS wheel sensors, EDL monitors the speed of the individual driving wheels. When a difference in driving wheel speed is detected (i.e. when one wheel starts to spin due to differences in road surfaces, e.g. due to water or dirt) the system brakes the spinning wheel, transferring engine power to the wheel with the best traction.

## **Electronic Stabilisation Program (ESP)**

ABS and ASR traction control systems are integrated into the Electronic Stabilisation Program (ESP). In short, ESP helps ensure that the vehicle goes where you steer it even in extreme driving conditions. The ESP system constantly compares the actual movement of the vehicle with pre-determined values and should a situation arise where the vehicle starts to skid, ESP will apply the brakes to individual wheels and automatically adjust the engine's power output to correct the problem. ESP prevents the vehicle from losing control when trying to avoid an accident, for example. It also prevents spinning off on a curve due to either understeer or oversteer.

## **Hill Start Assist (HSA)**

Hill Start Assist (HSA) holds the vehicle when the foot brake is released by temporarily locking the brake pressure (for a maximum of 1.5 seconds) to provide comfortable starting-off without rolling back. Hill Start Assist (HSA) operates on inclines greater than 5% and is fitted in combination with both the manual transmission and the Direct Shift Gearbox (DSG).

# Owning a Volkswagen.

## Volkswagen New Vehicle Warranty

Every new Volkswagen passenger vehicle is covered by a 3-year unlimited kilometers manufacturer's warranty, which includes Volkswagen Assist (24hr roadside assistance). Every new Volkswagen passenger vehicle is also covered by a 3-year paintwork and 12-year anti-corrosion perforation warranty.

## Volkswagen Assist – 24 Hour Roadside Assistance

As a valued customer, you can be assured that wherever you travel within Australia, you will have access to roadside assistance, 24 hours a day, 365 days a year. This is complimentary for the duration of the vehicle's original Volkswagen warranty period. You will receive help in the event of a breakdown or accident and if required, your vehicle will be mobilised or transported to an Authorised Volkswagen dealer.

As a Volkswagen owner you will also have access to the additional benefits of accommodation and car rental if your vehicle cannot be mobilised within 24 hours, when you are over 100kms away from home. Volkswagen Roadside Assist can also be renewed at the expiry of the original warranty, ensuring ongoing coverage for your vehicle.

## Volkswagen New Vehicle Extended Warranty\*

To give you added peace of mind and the assurance of added security, you have the option to extend the warranty period to suit your ownership cycle. If your Volkswagen is still covered by its New Vehicle Warranty, we can offer you a 36 month/60,000km extension on the original warranty period already existing with your Volkswagen manufacturer's Warranty. You then have the assurance that your Volkswagen remains a Volkswagen. For further information regarding warranty and extending your vehicles warranty period, please consult your local Volkswagen dealer, refer to your owner's handbook or visit [volkswagen.com.au](http://volkswagen.com.au).

\*Volkswagen New Vehicle Extended Warranty product is provided by Allianz Australia Insurance Limited (Allianz) ABN 15 000 122 850, AFSL Licence No. 234708. In arranging this cover, Volkswagen Group Australia Pty Ltd, ABN 14 093 117 876 and the authorised dealers act as agents of Allianz and not as your agent. Limits apply to the benefits you can claim. For full terms and conditions of cover, please refer to the relevant Volkswagen New Vehicle Extended Warranty policy document, available to you from your Volkswagen authorised motor dealer.

## Volkswagen Service

Your Authorised Volkswagen Service Centre is part of Volkswagen's global Quality Management System, ensuring all dealers are certified to ISO 9001:2000 – an internationally recognised Quality Standard. Authorised Volkswagen Service Centres have factory trained Technicians equipped with the very latest diagnostic equipment, specialist tooling and Volkswagen Genuine Parts. An Authorised Volkswagen Service Centre is able to undertake work in accordance to factory specified guidelines and maintenance schedules.

## Volkswagen Genuine Accessories®

Volkswagen Genuine Accessories® are designed for your vehicle and approved by Volkswagen, with particular regard to safety. The workmanship, dimensional accuracy and materials used in these parts comply with factory specifications. To ensure safety and reliability, Volkswagen recommends the use of Volkswagen Genuine Accessories®. Volkswagen Authorised Dealers offer a 3-years/ unlimited kilometres warranty on genuine accessories if fitted prior to vehicle purchase, or a 2-years/unlimited kilometres warranty if fitted after purchase.

## Volkswagen Finance

Whether you are buying, borrowing or leasing, Volkswagen Finance will certainly make you think differently about financing and insuring your new Volkswagen. Committed to meeting the needs of Volkswagen drivers across Australia, we offer a range of leasing, financing and insurance products, each with distinct advantages depending on your specific circumstances. Our packages are designed to suit your individual requirements and budgeting needs with fast approval times.

Speak to your participating local Volkswagen Dealer today for the best financial solution and ultimate insurance protection for your vehicle or visit [volkswagenfinance.com.au](http://volkswagenfinance.com.au).

**VOLKSWAGEN FINANCE**



# Fuel Saving Tips.

## We can all Think Blue.

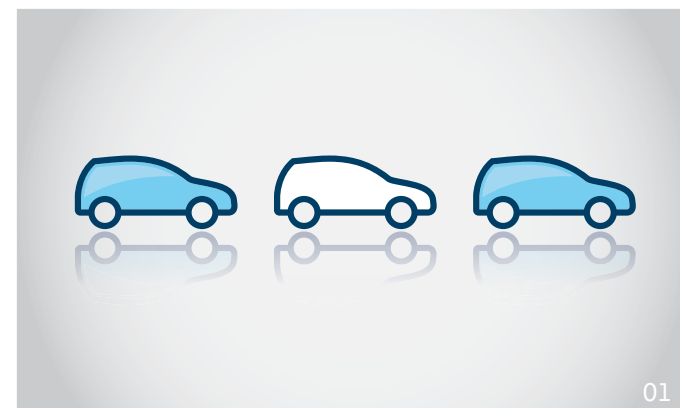
Now it's your turn to help. At Volkswagen, we believe we have a responsibility to produce the most fuel efficient, environmentally sustainable vehicles possible. But the good news is that all of us can Think Blue. By driving more responsibly, we can reduce fuel consumption even further.

How much difference can just one person make? Rather a big difference, we think. It's not just about individual actions and the savings they make. It's also about the effect they have on the wider world. Your decision to consume less fuel and limit your carbon emissions sends a clear message about your commitment to sustainability and your determination to act accordingly. As individuals, the difference we make to global emissions is modest. As part of a global movement to act responsibly and take better care of our planet, the difference we make is huge.

Fossil fuels are a limited resource, just like clean air and clean water. They won't last forever, so the less we use now, the longer our supplies will last and the longer we'll have to find better alternatives.

There are also benefits that are real and noticeable right here, right now. Reducing your consumption will put money back in your pocket as you enjoy low-emission motoring – and it couldn't be simpler.

We believe that to 'Think Blue' about your driving style isn't difficult, and its practical benefits go far beyond just saving money and reducing emissions. Here are nine tips on how to drive more efficiently.



## Be aware and save fuel. Think Blue.

### 01. Take it easy and save

#### Drive the modern way and think ahead.

Aggressive driving – hard braking and acceleration, sudden lane changes and unpredictable behaviour – is also fuel-inefficient driving. Instead, take a modern approach: predictive driving. Drive smoothly, watching as far ahead as you can to anticipate hazards and other events; cruise with the traffic and use your momentum to help you arrive safe and relaxed.

### 02. Change up early and fill up later

#### Drive in the highest gear possible.

If you have a manual transmission, work your way up through the gears as quickly as you can. Change into second gear once you've moved forward a car length, and cruise in the highest gear that's practical. It's like riding a bike – cruising at low revs uses far less energy than pedaling hard all the time. If you have an automatic, take your foot off the accelerator to avoid a kick down; the transmission will shift up to the next higher gear.

### 03. Just let it roll

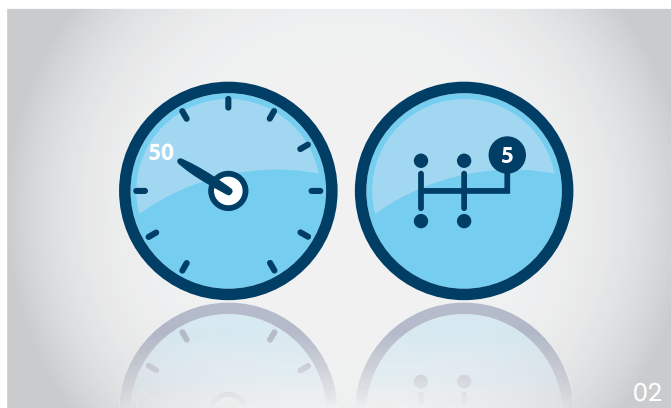
#### Use overrun fuel cutoff.

When you're coasting down a hill, or towards a set of traffic lights, there's no need to keep feeding fuel to your engine. Use your overrun cutoff and you won't use any fuel at all.

### 04. Comfort high, fuel consumption low

#### Use auxiliary equipment in moderation.

We all love our sound systems, air conditioning and other creature comforts, but they all use energy, which ultimately means that they all consume fuel. Turn off seat heaters and de-misters once they've done their job. Open your windows for a moment or two as you



drive off in summer to let the hot air circulate out before reaching for the air conditioning. Check your journey and the equipment you're using – if you don't need it, consider turning it off.

#### **05. Savings are in the air Check your tyre pressures.**

Checking your tyre pressures before driving off can pay big dividends when it comes to cutting fuel consumption. Under-inflated tyres massively increase rolling resistance, forcing your car to work harder (and burn more fuel) just to move down the road. If you're buying new tyres, look out for those with lower

rolling resistance. Keeping your tyres in good order can help you save fuel before you've even driven off!

#### **06. A warm engine – a cool way to save Avoid short trips.**

Many short trips means higher fuel consumption. Why? Because cold engines run less efficiently, and lots of short trips means your engine will spend much more time running cold. Plan your errands to minimise the number of trips you need to make and you'll save yourself time and stress as well as fuel and emissions. (It's also a bad idea to let an engine run just to warm it up – it doesn't reduce fuel consumption and is technically unnecessary.)



07



08



09

**07. Well-oiled for impressive savings**  
**Use Volkswagen approved engine oils.**

A well-lubricated engine produces less emissions than a poorly lubricated engine, especially when the weather is cold or the trip is short. Volkswagen Approved engine oils circulate easily, helping reduce fuel consumption and emissions. Their slightly higher purchase price will soon be justified by lower fuel bills. So make sure you use Volkswagen Approved engine oils and make sure you stick to your car's recommended oil change intervals.

**08. Keep it sleek**  
**Cut aerodynamic drag.**

Aerodynamics can have a significant impact on fuel consumption, especially on longer trips. So make sure you take your roof racks, bike racks, roof boxes and other attachments off your car when they're not in use. And keep windows up (and sunroofs closed) when cruising, as the air turbulence they create increases drag and hence, fuel consumption. You'll feel the difference as you drive and you'll see the difference at the fuel bowser.

**09. Lightly does it**  
**Avoid unnecessary weight.**

Every kilogram you load into your car takes energy to move – energy that will be supplied by burning fuel. You don't want to be caught short of items you need, but there's no point in lugging around your golf clubs, tent, portable barbecue and full tool box 'just in case'. Pare your regular load down to the minimum and enjoy the space as well as the fuel savings.

---

# Environmental

## Creating a sustainable future.

Volkswagen is committed to sustainability. For us this means taking responsibility for the environment by getting involved in initiatives that contribute to a sustainable future through our products and our behaviour. We call this attitude 'Think Blue'.

Our goal is to become the world's leading manufacturer of economical, environmentally responsible vehicles, making efficient, sustainable transport available to everyone. We want to inspire and motivate people to get involved in ecological sustainability, on the road and everywhere else.

Our approach is based on the principles of good design. We've taken what works – diesel engines, emissions management systems, automotive engineering principles – and used them to create a vehicle that's the ultimate expression of our Think Blue philosophy.





**Das Auto.**

**[www.volkswagen.com.au](http://www.volkswagen.com.au)**

Volkswagen Group Australia Pty Ltd  
The Lakes Business Park  
6 Lord Street  
Botany NSW 2019

ABN 14 093 117 876

**Printed in Australia  
August 2011**

Publication: VGA7744B

Volkswagen is distributed by Volkswagen Group Australia Pty Ltd, The Lakes Business Park, 6 Lord Street, Botany, NSW 2019. ABN 14 093 117 876. Specifications are as planned at August 2011, for Model Year 2012 and are subject to change without notice or obligation. Cars and accessories shown may be overseas models. Fuel consumption figures according to Australian Design Rules (ADR) 81/02. All Volkswagen approved parts and accessories are warranted for 3 years/unlimited kilometres if fitted prior to vehicle purchase, or for 2 years/unlimited kilometres if fitted after purchase. All information in this brochure is correct at the time of publication, however variations may occur from time to time and Volkswagen, in so far as it is permitted by law to do so, shall not be liable in any way as a result of any reliance by any person on anything contained in this brochure. The colours shown in this brochure are indicative only and may vary from actual items owing to the printing process. Authorised Volkswagen dealers will provide up-to-date information on model application, design feature, prices and availability on request.

Volkswagen Insurance & Volkswagen Extended Warranty are provided by Allianz Australia Insurance Limited (Allianz) Pty, AFS Licence No. 234708, ABN 15 000 122 580. In arranging this insurance Volkswagen Financial Services Australia Limited, ABN 20 097 071 460 & Volkswagen Group Australia Pty Ltd, ABN 14 093 117 896 and the authorised dealers act as agents of Allianz and not as your agent. Volkswagen Finance is a trading name of Volkswagen Financial Services Australia Pty Limited. Locked Bag 5009, Alexandria NSW 2015. Tel: 02 9695 6311.