



Commercial  
Vehicles

# The Transporter



---

# The Transporter.

Professional from every angle.

---

## LOW FUEL CONSUMPTION.

Thanks to BlueMotion Technology across the range.

## MOST OFF-ROAD READY VEHICLE IN ITS CLASS.

Thanks to the combination of 4MOTION all-wheel drive and mechanical rear differential lock.

## LARGE LOAD COMPARTMENT.

Up to 9.3m<sup>3</sup> load compartment volume.

**LARGEST NUMBER OF VARIANTS IN ITS CLASS.** Roof heights, wheelbases, and seating packages.

**CLEVERLY THOUGHT OUT STORAGE SYSTEM.** Large variety of storage options in the cockpit.

**PROVEN VOLKSWAGEN QUALITY.** Durable materials and high-quality workmanship.

When the design for a compact delivery van first emerged in 1947, Volkswagen Commercial Vehicles succeeded in precisely capturing the needs of professionals with the "Bulli". Since then, this concept has grown in versatility with each new Transporter generation. On the one hand, this has been achieved through technological advancements. But above all, because for over 65 years the Transporter has been putting into practice exactly that which professionals in a variety of different industries require.

The new Transporter is packed full of innovations, which offer solutions to important everyday problems.





Transporter Van shown with optional alloy wheels and second sliding door.

### Standard for all Transporter Van model variants.



#### Exterior

- Halogen headlights
- Daytime running lights (DRL)
- Sliding door, left
- Lifting rear tailgate with window and wiper/washer
- 16-inch or 17-inch steel wheels
- Full sized steel spare wheel

#### Interior

- Height-adjustable driver's seat with lumbar support
- Leather-wrapped steering wheel, height and reach adjustable
- Cleverly thought out storage system
- Rubber flooring in the driver's compartment
- "Austin" cloth seat upholstery

#### Function

- Stop/start system
- Bluetooth® phone and audio streaming compatibility
- "Composition Colour" radio system with USB/AUX/SD input
- Steering wheel audio controls
- Cruise control
- Electronic immobiliser
- Central locking with remote control
- Power windows and exterior mirrors
- Manually controlled air conditioning

#### Safety

- Driver alert system (fatigue detection)\*
- Hill-start assist
- Multi-collision brake (MCB)
- Electronic stabilisation programme (ESP)
- Traction control system (TCS)
- Anti-lock braking system and brake assist
- Driver and front passenger front and side/head airbags
- Reverse parking sensors\*
- Six lashing eyes (eight for Long Wheelbase)

\* Safety technologies are not a substitute for the driver's responsibility of the vehicle.

### Additional standard equipment on the Transporter Crewvan.



#### Exterior

- Sliding door, right
- Slide-opening windows in left and right sliding doors

#### Interior

- 3-seater bench seat in second row, folding and tipping, removable
- Rubber floor in rear

### Standard equipment on the Transporter Single Cab Chassis.



- 2-seater front passenger bench seat

### Standard equipment on the Transporter Dual Cab Chassis.



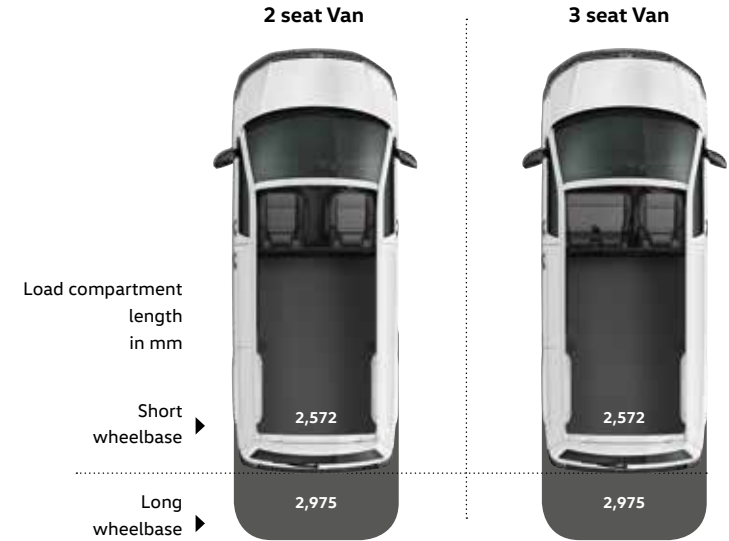
- 3-seater bench seat in the second row
- Two passenger compartment doors with fixed windows






# The Transporter Van.

The greatest range of possibilities – for both large and difficult jobs.

The new Transporter adapts perfectly to every transport task.

Two wheelbases and three roof variants allow a load compartment volume ranging from 5.8m<sup>3</sup> to 9.3m<sup>3</sup>. The payload can be up to 1.2 t\*, while an optional second sliding door simplifies loading and unloading. The driver's compartment can also be equipped to meet the driver's needs. Possible options include seating combinations with two single seats or a front passenger bench seat.



Short wheelbase	Load compartment volume
	<b>5.8 m<sup>3</sup></b> Normal roof
	<b>6.7 m<sup>3</sup></b> Medium roof
Long wheelbase	Load compartment volume
	<b>6.7 m<sup>3</sup></b> Normal roof
	<b>7.8 m<sup>3</sup></b> Medium roof
	<b>9.3 m<sup>3</sup></b> High roof



\*Payload is defined as the Gross Vehicle Mass (GVM) minus the Unladen Weight. Payload is the maximum combined weight of occupants, cargo, added structures and tow ball down weight (when towing). GVM must not be exceeded.



01

Overseas models shown.



03



04



05



02

5 seat Crewvan

Load  
compartment  
length in mmShort  
wheelbaseLong  
wheelbase

1,600

1,967

## The Transporter Crewvan.

Plenty of space for up to 5 people. And all of their equipment.

Putting your business on the road – all in a day's work for the Transporter Crewvan. It provides space for up to five people, along with plenty of load space, proving its worth day in and day out. The sound-absorbing rubber flooring in the passenger compartment is easy to wash. Plus, dual sliding doors makes it easy for rear passengers to get in and out of the vehicle.



- 01 Lifting tailgate.** The tailgate is a standard feature for all Transporter models with normal and medium roofs. The tailgate's large opening height makes the vehicle easy to load and unload. It also serves as a shelter in wet weather.
- 02 Rear wing doors.** The Transporter with a normal or medium roof can also be fitted with rear wing doors. For long wheelbase vehicles, these are also available with an opening angle of 250 degrees, and locks to secure the doors in the open position. For the high roof version, high rear wing doors come as standard.
- 03 Rubber floor covering.** The load or passenger compartment is available with a washable rubber floor covering, a practical loading edge protective trim, and step lighting.
- 04 Lashing eyes.** Depending on the wheelbase, the load compartment is fitted with six or eight adjustable lashing eyes as standard to secure goods using tensioning straps.
- Universal floor covering.** The load compartment of the Transporter van can be fitted with a robust wooden floor with non-slip surface and cut-outs with flush coverings.
- 05 Partition.** A full height partition with window is available.
- Hardboard side panel trim.** The hardboard trim in the passenger and load compartments is especially robust. The hardboard panels are fitted full-height from the floor to the roof frame or half-height in vehicles with window openings.

# The Transporter Chassis.

Single and Dual Cab.

The basis on which everything is built.

The Transporter is the only vehicle in its class to offer a chassis with a payload of up to 1,415kg\* for a variety of different bodies. The special body of your choice can be secured easily and safely to the extremely robust hat-shaped profile frame with the help of standardised mounting points.

Long wheelbase	Gross Vehicle Weight
	Up to <b>3.0 t</b> Single cab version
	Up to <b>3.0 t</b> Dual cab



\*Payload is defined as the Gross Vehicle Mass (GVM) minus the Unladen Weight. Payload is the maximum combined weight of occupants, cargo, added structures and tow ball down weight (when towing). GVM must not be exceeded.

# Dropside Tray.

Optimally prepared for every challenge.

More heavy machinery, more equipment, more manpower. Transporter chassis models are available with a dropside tray, direct from the factory. With a robust load surface, aluminium tray, rear step and retaining cables, it makes the Transporter perfect for any number of tough jobs.



**Lashing eyes.**  
Lashing eyes for securing the load are recessed into the platform, and can be folded flush with the surface.

Overseas models shown.



---

## Interior.

The perfect equipment. Perfectly fitted.

---

The Transporter has been precisely designed to impress during daily use. The cabin offers numerous storage options to help with the perfect planning of a long working day. The intelligent arrangement of the various storage options, compartments, and holders makes the interior a workplace where everything is in perfect order. Valuables can be stored safely in the lockable glove compartment, documents can be tidily filed away in the A4-size middle compartment, and glasses are readily accessible in the roof compartment. Multiple drinks are held securely in the bottle and cup holders.

And if your job is even more demanding than all that: the medium and high roof model variants also provide additional storage space in the roof. Everything is on hand: when you need it, and the way you need it.

**Seats.** The driver's seat features height and lumbar adjustment for all-day comfort.

**Leather-covered multi-function steering wheel.** Adjustable height and reach provide excellent grip. It is also extremely user-friendly. The radio or navigation system (if fitted), your mobile phone or the cruise control can be controlled using buttons on the steering wheel.

**Light & Sight package.** Designed to improve visibility, this package consists of an automatically dimming rear view mirror, which protects against dazzling from traffic to the rear, and a rain sensor, which activates the windscreen wipers. The driving light assistant illuminates the path to the vehicle, providing safety at night.



**"Climatic" air conditioning.** This semi-automatic air conditioning has an interior sensor, and constantly compares the interior temperature with the desired temperature in the cab. It also provides optimal air distribution in the passenger compartment.





App-Connect featuring Apple CarPlay®

## The innovative infotainment systems.

Thanks to up-to-the-minute technology, you can stay connected while out on the road in your Transporter.

**01 Multi-function display.** It shows current information such as the time, remaining range outside temperature and average consumption. In conjunction with the optional navigation system, it also shows directional arrows for convenient navigation for all-day comfort.

**Mobile phone interface.** The Bluetooth® interface enables you to make phone calls safely and conveniently during the journey. It can be controlled via the multi-function display or the radio touch-screen.

**02 "Composition Colour" radio system.** The system consists of a 12.7 cm (5 inch) TFT colour display with touch screen function, an MP3- and WMA-compatible CD drive, a 4 x 20 watt output with four loudspeakers, an SD-card slot, an AUX-IN interface, a USB port, a Bluetooth® connection for mobile telephones, and a dual tuner with Phase Diversity for optimal radio reception.

**03 "Composition Media" radio system.** This optional system consists of a 16.5 cm (6.33 inch) TFT colour display, a touch screen with proximity sensor, an MP3- and WMA-compatible CD drive, a 4 x 20 watt output with four loudspeakers, an SD-card slot, an AUX-IN interface, and interface, a USB port, a Bluetooth® connection for mobile telephones, and a dual tuner with Phase Diversity for optimal radio reception. App-Connect\* is fitted on all vehicles with this system.

**04 "Discover Media" navigation system.** In addition to functions of the "Composition Media" radio system, there is a second integrated SD-card slot which is compatible with the SD-card with the map data. Optionally available.

**05 App-Connect.** Fitted with "Composition Media" and "Discover Media" systems, App-Connect\* lets you integrate your smartphone via a USB port. Compatible with Apple CarPlay®, Android Auto™ and MirrorLink®.

# Cutting-edge safety systems.

Prepared to handle almost any situation.

To ensure that every drive ends as stress-free as it begins, the Transporter is equipped with various safety systems, which are activated in critical situations as a preventative measure. New to the onboard standard equipment is the Multi-collision Braking System. Moments after an accident, the vehicle begins a phased braking action down to 10 km/h in order to prevent secondary collisions. Should an impact nonetheless result, driver, front passenger, and for the first time as standard, side/head airbags provide optimal protection to occupants.



#### Airbags.

Driver, front passenger, and for the first time as standard, side/head airbags offer occupants the best possible protection in the event of head-on and side impacts.



#### Driver Alert System.

Uses visual and acoustic warning signals to recommend that the driver takes a break as soon as it registers driving behaviour that indicates tiredness.



#### Anti-lock braking system (ABS).

Prevents wheel lock and maintains manoeuvrability.



#### Brake assist system.

Registers the speed at which the brake pedal is pressed. During a reflexive or emergency braking action, it ensures that full brake pressure is built up more quickly.



#### Electronic Stabilisation Programme.

Prevent under- or over-steering via targeted braking of individual wheels.



#### Traction control system (TCS).

Prevents wheelspin.



#### Electronic differential lock (EDL).

Distributes the engine torque to the tyres without slippage.



#### Hill Start Assist.

Prevents the vehicle from rolling back on inclines and makes handling easier when starting up on uphill slopes.



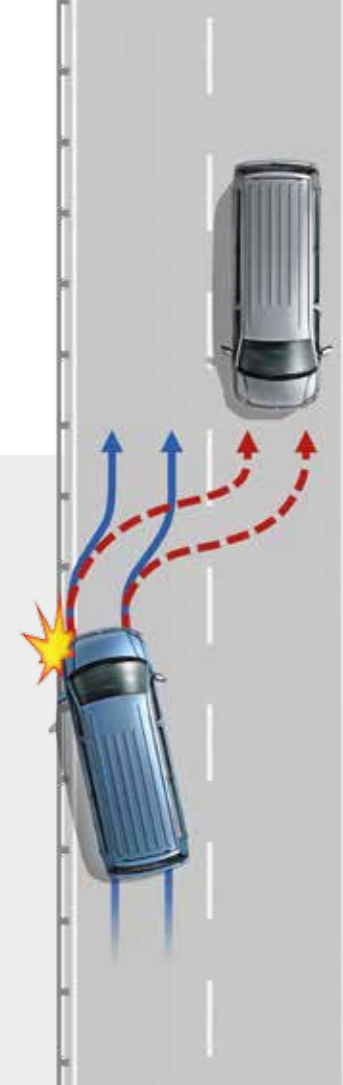
#### Daytime running lights.

Switch on automatically when the ignition is activated and lower the risk of an accident in daylight.



#### Cruise control.

As of a speed of 30 km/h, it maintains the set speed depending on uphill and downhill inclines.



**Multi-collision Braking System.** Triggers braking after a collision, with the aim of preventing secondary collisions.

The Multi-collision Braking System activates when two independent sensors detect an accident. After a short delay, the vehicle begins a phased braking action down to 10 km/h, during which the driver can take over at any time.



**Rear Park Distance Control.** Emits audible warnings when obstacles are detected behind the vehicle when parking, and also provides a visual display of the vehicle's distance from the obstacles.



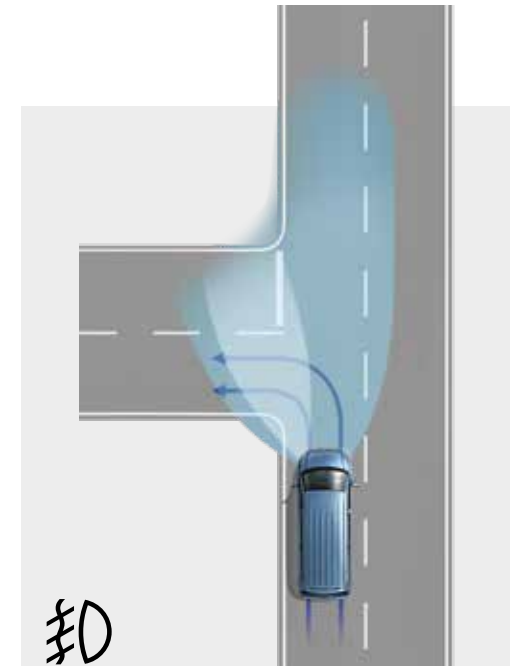
**Rear View Camera (RVC).** Simplifies parking by showing a limited view of the area behind the vehicle on the display of the radio or navigation system. Additional static guidelines facilitate the parking process. Optional reversing camera only available in conjunction with lifting tailgate.

# Driver assistance systems.

The Transporter can be fitted with a range of innovative driver assistance systems on request.



**Lane change assist "Side Assist".** Displays a warning signal in the door mirror if one of the system's sensors registers a vehicle in the blind spot when changing lanes. Available on Short Wheelbase Van and Crewvan only.



**Fog lights with integrated static cornering light.** Ensures optimal visibility in poor weather conditions. The headlight nearest to the corner illuminates the roadside when turning. Optional extra.

# Efficient turbo-diesel engines.

The 2.0L turbo-diesel engine is available in two output levels.

**2.0L TDI340 (103kW, 340Nm)**  
Average fuel consumption from 7.2L/100km\*

**Bi-turbo  
2.0L TDI400 (132kW, 400Nm)**  
Average fuel consumption from 7.3L/100km\*

The Transporter achieves impressive fuel consumption thanks to the standard BlueMotion Technology (BMT) system.



**Start/stop system.** After shifting into neutral and releasing the clutch, the engine is switched off automatically, e.g. at red traffic lights. To start the engine again, it is enough to step on the clutch. The stop/start function happens automatically for vehicles with the dual clutch gearbox (DSG).

**Regenerative braking (not illustrated).** This recharges the vehicle battery during overrun and braking phases, thereby relieving strain on the engine, and reducing fuel consumption.

\* Fuel consumption figures according to Australian Design Rule (ADR) 81/02.



Overseas model shown.

**Dual clutch gearbox DSG.** The 7-speed dual clutch gearbox DSG permits fully automatic, almost imperceptible gear changing with no interruption in power flow, which results in significantly increased driving comfort. You can choose between normal and sport mode.

---

# The most off-road ready vehicle in its class.

---

The new Transporter has various innovative features that ensure excellent traction, optimal handling and steering response even in difficult driving conditions.



**The new generation 4MOTION all-wheel drive.** Models with 4MOTION are equipped with the latest generation all-wheel-drive coupling. Advantages include reduced weight, and further enhancement of vehicle handling and dynamics. Available for TDI400 models only.

**Mechanical differential lock.** The mechanical differential lock is optionally available for the rear axle together with the 4MOTION all-wheel drive. This makes starting up in adverse, off-road conditions much easier.

**Suspension upgrades.** Rough road and heavy duty suspension packages are available for front wheel drive and 4MOTION Transporter models.



# Specifications

Engine	2.0 litre TDI340 BlueMotion Technology		2.0 litre TDI400 BlueMotion Technology					
Type	4 cylinder inline turbocharged direct injection diesel with engine Start/Stop system <sup>^</sup>		4 cylinder inline bi-turbo direct injection diesel with engine Start/Stop system <sup>^</sup>					
Max power, kW @ rpm	103 @ 3,500		132 @ 4,000					
Max torque, Nm @ rpm	340 @ 1,750-2,500		400 @ 1,500-2,000					
Cubic capacity, litres/cc	1,968		1,968					
Fuel type (recommended)	Diesel DIN EN 590		Diesel DIN EN 590					
Fuel tank capacity, L	80		80					
<b>Transmission</b>	6 speed manual	7 Speed Direct Shift Gearbox (DSG) with sport mode and Tiptronic function	6 speed manual	7 Speed Direct Shift Gearbox (DSG) with sport mode and Tiptronic function				
Driven wheels	Front Wheel Drive	Front Wheel Drive	Front Wheel Drive	All Wheel Drive	Front Wheel Drive	All Wheel Drive		
<b>Fuel Consumption ** - Van / Crewvan</b>								
Combined, L/100km	7.2	7.7	7.3	7.9	7.6	8.3		
<b>Fuel Consumption ** - Cab Chassis</b>								
Combined, L/100km		<b>Single Cab</b> 7.2	<b>Dual Cab</b> 7.6	<b>Dual Cab</b> 8.2	<b>Dual Cab</b> 7.9			

# Weights and Capacities

Weights - Van / Crewvan	SWB Van TDI340	SWB Van TDI400	TDI400 4MOTION	LWB Van TDI340	LWB Van TDI400	TDI400 4MOTION	SWB Crewvan TDI340	LWB Crewvan TDI340
Gross Vehicle Weight (GVM), kg	3,000	3,000	3,000	3,000	3,000	3,000	3,000	3,000
Unladen Mass <sup>1</sup> for Standard roof, kg - Manual	1,764	1,801	1,910	1,820	1,857	1,966	-	-
Payload <sup>2</sup> maximum for Standard roof, kg - Manual	1,236	1,199	1,090	1,180	1,143	1,034	-	-
Unladen Mass <sup>1</sup> for Standard roof, kg - DSG	1,784	1,820	1,932	1,840	1,876	1,986	1,918	1,981
Payload <sup>2</sup> maximum for Standard roof, kg - DSG	1,216	1,180	1,068	1,160	1,124	1,014	1,082	1,019
Towing Capacity, kg								
Braked <sup>‡</sup>	2,500	2,500	2,500	2,500	2,500	2,500	2,500	2,500
Unbraked	750	750	750	750	750	750	750	750
Towbar Load Limit, kg	100	100	100	100	100	100	100	100

Weights - Cab Chassis	LWB Single Cab TDI340	LWB Dual Cab TDI400	TDI400 4MOTION
Gross Vehicle Weight (GVM), kg	3,000	3,000	3,000
Unladen Mass <sup>1</sup> , kg - Manual	-	1,719	1,828
Payload <sup>2</sup> maximum, kg - Manual	-	1,281	1,172
Unladen Mass <sup>1</sup> , kg - DSG	1,584	1,738	-
Payload <sup>2</sup> maximum, kg - DSG	1,416	1,262	-

Full vehicle specifications are available at <http://content.volkswagen-commercial.com.au/transporter>

<sup>^</sup>The Start/Stop system is designed to reduce fuel consumption and CO2 emissions. It achieves this by automatically switching off the engine while the vehicle is stationary and then starting it again automatically when the driver wants to drive off. There are certain operating conditions where the Start/Stop system is deactivated (e.g. during engine warm-up), please refer to the owner's manual for full operating information.

\*\* Fuel consumption figures according to Australian Design Rule (ADR) 81/02. The driving style, road and traffic conditions, environmental influences, the fitment of accessories and vehicle condition can in practice lead to consumption figures which may differ from those calculated with these standards.

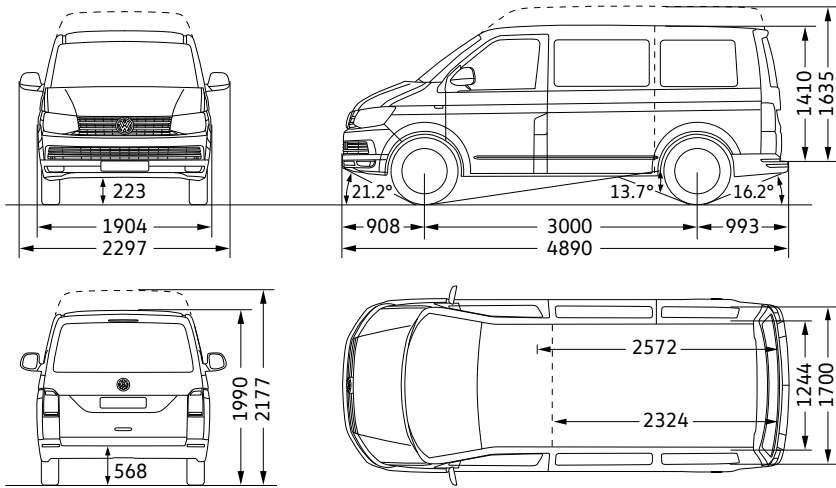
1. The Unladen Mass (UM) includes 10L of fuel, vehicle fluids and no occupants. Figures quoted are for base model vehicles only.

2. Payload figures determined by subtracting 'Unladen Weight' from total 'Gross Vehicle Mass' (GVM). A vehicle's final payload, given the different configurations, can only be determined by weighing the individual vehicle and comparing to the known GVM. Figures quoted are for base model vehicles only.

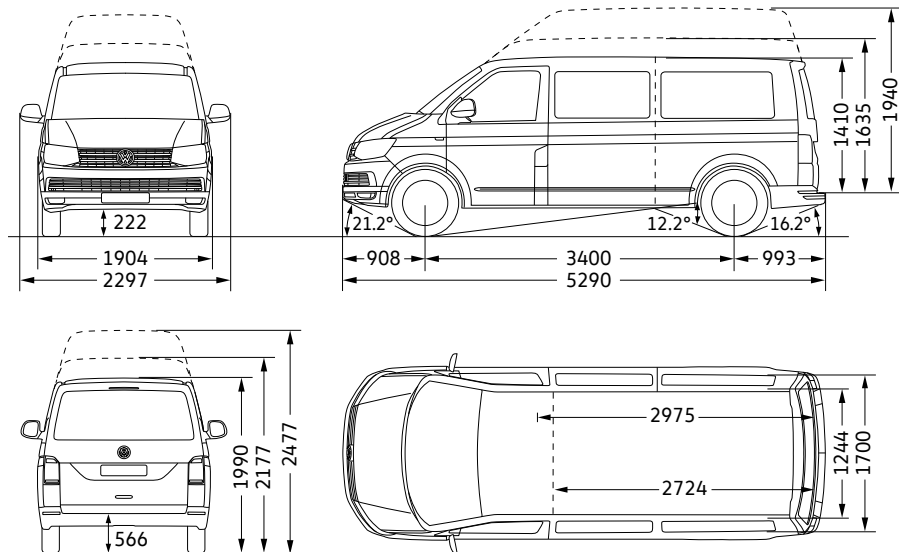
‡ Please note, Volkswagen Group Australia does not endorse or will not be held liable for any claim, loss or damage arising from the use or fitment of electronic trailer brakes.

# Dimensions

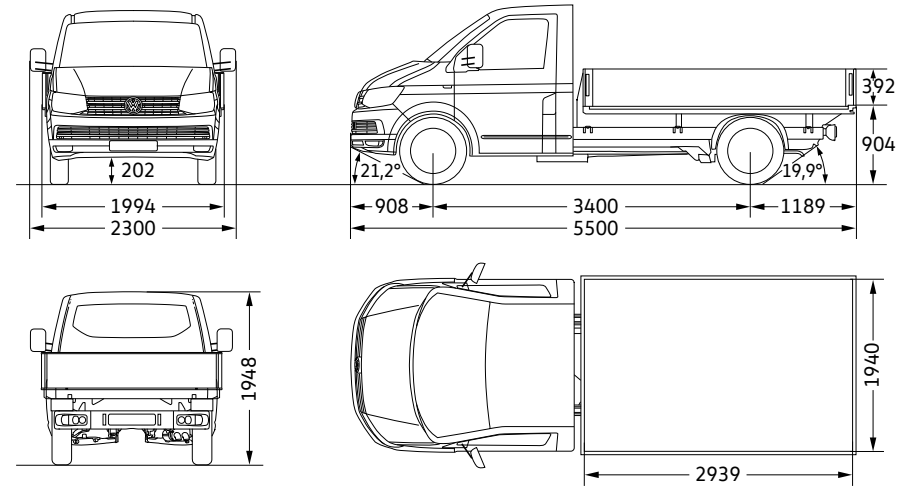
## SWB Van



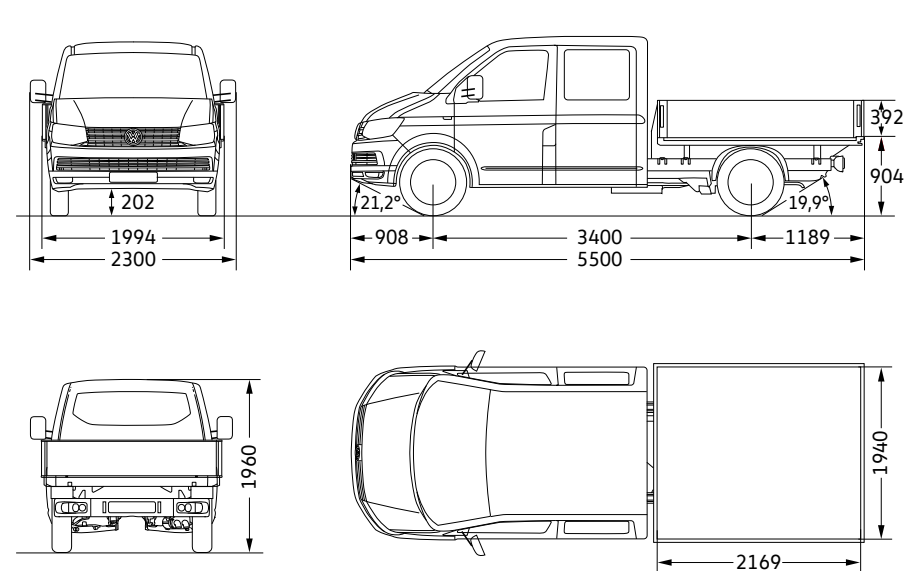
## LWB Van\*



## Single Cab with Optional Tray



## Dual Cab with Optional Tray



\*High roof not available in conjunction with long wheelbase 4MOTION models. Full vehicle specifications and dimensions are available at <http://content.volkswagen-commercial.com.au/transporter>

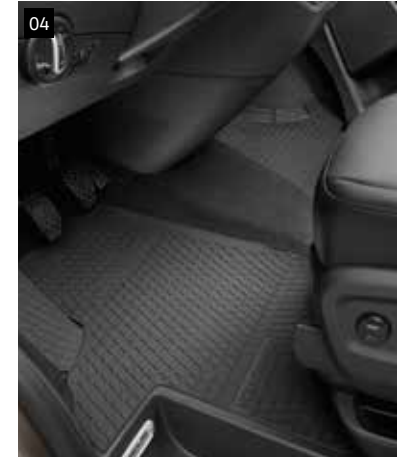
Vehicle dimensions shown in mm.

# Volkswagen Accessories.

The Transporter is a highly versatile vehicle that leaves nothing to be desired. If you would like to have a few extras, Volkswagen Accessories offers interesting additional equipment options. These have been developed in cooperation with our Development and Design department, provide top quality, and are only available at your Volkswagen dealer. So everything fits together nicely.

- 01 Cargo Barrier
- 02 Rear Cargo Mat
- 03 Roof Bars

- 04 Rubber Floor Mats
- 05 Slimline Weathershields





## Solid paint finishes



**Candy White** | Solid paint finish | B4B4



**Pure Grey** | Solid paint finish | J2J2



**Deep Ocean** | Solid paint finish | OPOP



**Luminous Orange** | Solid paint finish | E3E3



**Grape Yellow** | Solid paint finish | 1C1C



**Cherry Red** | Solid paint finish | 4B4B

## Metallic and Pearlescent paint finishes



**Reflex Silver** | Metallic paint finish | 8E8E



**Indium Grey** | Metallic paint finish | X3X3



**Deep Black** | Pearl effect paint finish | 2T2T



**Bamboo Green** | Metallic paint finish | 3T3T

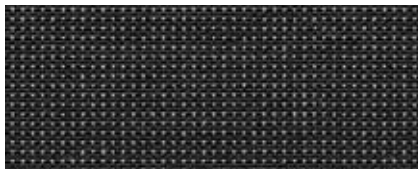


**Starlight Blue** | Metallic paint finish | 3S3S



**Acapulco Blue** | Metallic paint finish | 2W2W

## Seat upholstery



**Austin**  
Cloth seat upholstery | Titanium Black / Moon Rock Grey

## Volkswagen Choice: Protecting your investment.

Enjoy a flexible finance solution that provides you with the assurance of knowing exactly what the minimum value<sup>#</sup> of your vehicle will be at the end of your term.

- ✓ Personally tailored solutions, based on your term and kilometre usage
- ✓ Opportunity to upgrade your Volkswagen to the latest model more often, enjoying the best innovations and new technologies
- ✓ Peace of mind knowing the minimum future value of your Volkswagen right from the start, so you know it will retain its value over time<sup>^</sup>

### At the end of your term, you can simply choose to:

#### TRADE-IN

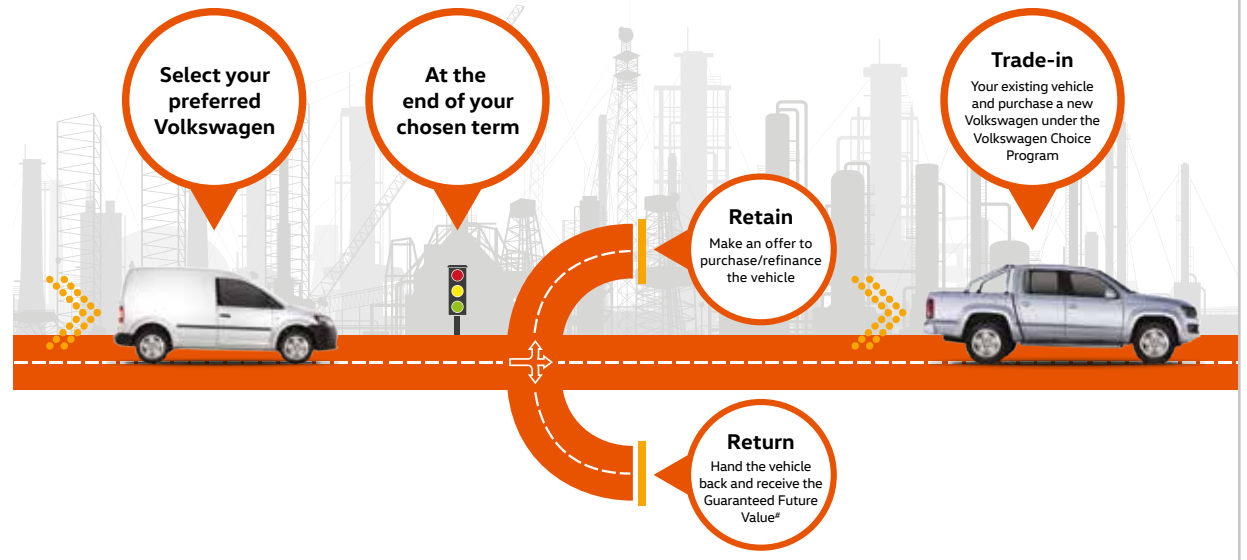
If you wish to trade-in your Volkswagen for a new vehicle, all you need to do is return it to the dealership. If the trade-in value is higher than the Guaranteed Future Value, you can use this equity towards your new vehicle.

#### RETAIN

If you prefer to retain your Volkswagen, simply let us know. Provided that you also meet the relevant payment obligations under your contract, if we agree, you can purchase your vehicle outright for the Guaranteed Future Value price locked in at the start of the contract.<sup>#</sup> Then your Volkswagen is yours to keep. Or you can choose to refinance your residual at the end of the term.

#### RETURN

Simply return your vehicle to your Volkswagen dealership at the end of the term. If the vehicle meets the agreed requirements,<sup>#</sup> we will give you the benefit of the full Guaranteed Future Value amount.



To find out more, go to <http://content.volkswagen-commercial.com.au/volkswagenchoice>

To learn more about further finance and insurance options, go to [www.vwfinancialservices.com.au](http://www.vwfinancialservices.com.au)

<sup>#</sup>The Volkswagen Choice Program consists of an option to require Volkswagen Financial Services to purchase your vehicle at the end of your Volkswagen Financial Services Chattel Mortgage, Consumer Loan or Hire Purchase for a value (known as the Guaranteed Future Value) determined by Volkswagen Financial Services and set out in your contract. The Guaranteed Future Value is not a representation by Volkswagen Financial Services as to the likely market value of your vehicle as at the end of your contract. The option is available on new and demonstrator Volkswagen vehicles for selected models only. Please verify with your dealership vehicles that are eligible for the program. <sup>#</sup>If vehicles are not returned in an acceptable condition, as defined in the terms and conditions or exceed kilometre restrictions the Guaranteed Future Value will be reduced. See the Volkswagen Choice Fair Wear and Tear Guide for more information on the required conditions and circumstances. The cost of the Volkswagen Choice Program is incorporated into the applicable interest rate. Please read the full terms and conditions. Please consider whether these products and services are appropriate for your circumstances. Before acting on any of the information on this page, please seek independent financial and tax advice. Full terms and conditions are available upon application. Available only to approved applicants of Volkswagen Financial Services. Subject to credit assessment. Fees and charges apply. Fleet, government, rental buyers, hire car and chauffeur companies are excluded. Available at participating Volkswagen dealers. Volkswagen Financial Services is a trading name of Volkswagen Financial Services Australia Pty Limited ABN 20 097 071 460. Australian Credit Licence 389344.

# General information

## Owning a Volkswagen

### **Volkswagen New Vehicle Warranty**

Every new Volkswagen vehicle is covered by a three-year unlimited kilometre manufacturer's warranty, which includes Volkswagen Assist (24-hour roadside assistance). Every new Volkswagen vehicle is also covered by a 3 year paintwork and 12-year anticorrosion perforation warranty. For further information regarding this New Vehicle Warranty, including pricing and terms and conditions, please consult your local Volkswagen dealer or visit [www.volkswagen-commercial.com.au](http://www.volkswagen-commercial.com.au)

### **Capped Price Servicing Every Calendar Year**

The Transporter comes with peace of mind included, with Capped Price Servicing Every Calendar Year now available at participating Volkswagen dealers. Authorised Volkswagen Service Centres have factory trained technicians equipped with the very latest diagnostic equipment, specialist tooling and Volkswagen Genuine Parts®. For further information regarding Capped Price Servicing program, including pricing and terms and conditions, please consult your local Volkswagen dealer or visit [www.volkswagen-commercial.com.au](http://www.volkswagen-commercial.com.au)

### **Volkswagen Assist – 24-Hour Roadside Assistance**

As a valued customer, you can be assured that wherever you travel within Australia, you will have access to roadside assistance, 24 hours a day, 365 days a year. This is complimentary for the duration of the vehicle's original Volkswagen warranty period. You will receive help in the event of a breakdown or accident and, if required, your vehicle will be mobilised or transported to an Authorised Volkswagen Workshop. As a Volkswagen owner you will also have access to the additional benefits of accommodation and car rental if your vehicle cannot be mobilised within 24 hours, when you are over 100km away from home.

### **Volkswagen Genuine Parts®**

Volkswagen Genuine Parts® are designed for your vehicle and approved by Volkswagen, with particular regard to safety. The workmanship, dimensional accuracy and materials used in these parts comply with factory specifications. To ensure safety and reliability, Volkswagen recommends the use of Volkswagen Genuine Parts®. Volkswagen Authorised Dealers offer a two-year unlimited kilometre warranty on Genuine Parts from the date of purchase.

### **Volkswagen Financial Services**

Buying, borrowing or leasing, Volkswagen Financial Services will certainly make you think differently about financing and insuring your new Volkswagen. Committed to meeting the needs of Volkswagen drivers across Australia, we offer a range of leasing, financing and insurance products, each with distinct advantages depending on your specific circumstances. We can tailor a solution to suit your individual requirements, so you can rest assured that there will be no surprises along the way. Speak to your local participating authorised Volkswagen Dealer today to put together a solution that best suits your lifestyle.

### **Volkswagen Choice Guaranteed Future Value^**

Volkswagen Choice is a finance program available to approved applicants of Volkswagen Financial Services only which provides Volkswagen owners protection around your Volkswagen's future value, whilst offering a simple monthly instalment financing option. Enjoy the peace of mind of knowing the minimum value you can receive for your vehicle at the end of your contracted term. You can choose to either trade-in, return or retain your Volkswagen – it's your choice. Learn more about how to protect your investment by visiting [www.vwfinancialservices.com.au](http://www.vwfinancialservices.com.au) today.

# The Transporter

Volkswagen Group Australia Pty Ltd  
24 Muir Road Chullora NSW 2190  
ABN 14 093 117 876

Printed in Australia  
May 2016

[www.volkswagen-commercial.com.au](http://www.volkswagen-commercial.com.au)

Publication: VWCTRANBROMY16.5

Your Volkswagen dealer.

#### **Important information**

Apple CarPlay® is a registered trademark of Apple Inc. Android Auto™ is a registered trademark of Google Inc. MirrorLink® is a registered trademark of Car Connectivity Consortium LLC. Bluetooth® is a registered trademark of Bluetooth SIG Inc.

Volkswagen is distributed by Volkswagen Group Australia Pty Ltd, 24 Muir Road, Chullora, NSW 2190, ABN 14 093 117 876. Specifications are as planned at May 2016, for Model Year 2016 and are subject to change without notice or obligation. All information in this brochure is correct at the time of publication, however variations may occur from time to time and Volkswagen, in so far as it is permitted by law to do so, shall not be liable in any way as a result of any reliance by any person on anything contained in this brochure. Authorised Volkswagen dealers will provide up-to-date information on model application, design feature, prices and availability on request. All colours are a general guide only, as the printing process cannot reproduce the actual exterior colour appearance. See your dealer to confirm colour/model availability.