



Volkswagen

The Multivan

Specifications



Features and Specifications

Safety and security	Comfortline (Short and Long Wheelbase)	Highline (Short Wheelbase)	Executive (Long Wheelbase)
Airbags			
Front airbag for driver and front passenger	●	●	●
Side/head airbags for driver and front passenger	●	●	●
Curtain airbags for outer seats in 2nd and 3rd rows	Short Wheelbase only	●	—
Seat belts			
3-point seat belts with height adjustment and belt tensioners for driver and front passenger	●	●	●
3-point seat belts for all rear seats	●	●	●
Seat belt warning light and buzzer for driver's seat	●	●	●
Child Restraints			
Child seat top tether anchorage points (for 2nd row Captain's chairs and all seats in 3rd row)	●	●	●
ISOFIX child seat anchorage points (for 2nd row Captain's chairs and outer seats in 3rd row)	●	●	●
Brakes and Traction Control			
Multi-Collision Brake (MCB)	●	●	●
Electronic Stabilisation Programme (ESP)	●	●	●
Anti-lock Braking System (ABS)	●	●	●
Brake Assist System (BA)	●	●	●
Traction Control System (TCS)	●	●	●
Electronic Differential Lock (EDL)	●	●	●
Hill Hold Control	●	●	●
Mechanical rear differential lock	—	Option for 4Motion	—
Hill Descent Control	—	Option for 4Motion	—
Driver Assistance Technology*			
Driver Alert (Fatigue Detection System)	●	●	●
Front and rear park distance control with rear view camera system	●	●	●
Lane Change Assist "Side Assist" (blind spot monitoring)	Option for SWB only	●	—
Forward Collision Warning "Front Assist" with City Emergency Braking (City EB)	—	●	●
Lighting			
Dual halogen headlights (H7)	●	—	—
Daytime running lights (DRL)	●	—	—
LED headlamps with separate LED daytime running lights and LED tail lights	—	●	●
Front fog lights with static cornering function	○	●	●

*Safety technologies are not a substitute for the driver's responsibility of the vehicle.

● Standard ○ Optional Extra — Not available

Safety and security

Comfortline

Highline

Executive

Lighting continued

Automatic headlight activation with separate daytime running lights, "Leaving Home" and manual "Coming Home" function

●

●

●

Headlight range adjustment (manual)

●

—

—

Headlight range adjustment (automatic)

—

●

●

High stop light

●

●

●

Rear fog light

●

●

●

Locking

Engine immobiliser (electronic)

●

●

●

Central locking system with radio remote control and interior release mechanism

●

●

●

SAFELOCK deadlock function

—

●

●

Anti-theft alarm with interior monitoring, backup horn, and towing protection

—

●

●

Two (2) remote control folding keys and one (1) rigid key

●

●

●

Child safety locks on rear sliding doors

●

●

●

Head Restraints

Front safety head restraints, height adjustable

●

●

●

Rear head restraints, height adjustable for all seating positions

●

●

●

Exterior Equipment / Styling

Doors

Electric sliding side doors

●

●

●

Power latching tailgate with window and wiper/washer

●

—

—

Electric opening and closing rear tailgate with window and wiper/washer

—

●

●

Windows

Heat-insulating windshield made of laminated glass

●

●

●

Heat-insulating glass (green)

●

—

—

Rear privacy glass

—

●

●

Side windows (opening) in sliding doors

●

●

●

Side windows (fixed) in rear of passenger compartment

●

●

●

Windscreen wiper intermittent control and rain sensor

●

●

●

Heated rear window with wiper/washer system

●

●

●

Power windows with comfort operation and circuit breaker (front)

●

●

●

Exterior Equipment / Styling

Comfortline

Highline

Executive

Body Enhancements

Body coloured bumpers	●	●	●
Body coloured door handles and sliding door covers	●	●	●
Body coloured exterior mirror housings	●	—	●
Body coloured exterior mirror housings with high-gloss black base	—	●	—
High-gloss black radiator grille with 3 decorative chrome strips	●	—	—
High-gloss black radiator grille with 3 decorative chrome strips and additional chrome strip on lower grille	—	●	●
Chrome base on side turn signals	●	—	—
Chrome on vehicle side, tailgate, lower air intake and side turn signals	—	●	●
Stainless steel protection strip for tailgate opening	—	●	—
Sliding / pop-up sunroof in cab (operated electrically) with sunblind	—	○	○
Roof rack preparation rails	●	●	●
Front and rear mud guards	●	●	●
Trailer hitch preparation	●	●	●

Wheels and Tyres

4 x 16" alloy wheels - CLAYTON - 215/65 R16 C106/104T tyres	Standard for SWB	—	—
4 x 17" alloy wheels - DEVONPORT - 235/55 R17 103H rf tyres	Standard for LWB	●	●
4 x 18" alloy wheels - SPRINGFIELD - 255/45 R18 103H xl tyres - Full size spare wheel and jack replaced with tyre repair kit	—	○	○
Steel spare wheel - full size, OE tyre	SWB only	—	—
Alloy spare wheel - full size, OE tyre	—	●	—
Tyre repair kit	—	—	●
Tool kit with vehicle jack	●	●	●

Comfort & Convenience

Comfortline

Highline

Executive

Air Conditioning

Climatronic air conditioning system, with dual front temperature control and rear controls

●

●

●

Air recirculation vents in headliner for rear passenger compartment

●

●

●

Fresh air intake system with activated charcoal canister

●

●

●

Cruise Control

Cruise Control

●

●

●

Adaptive Cruise Control (ACC)*

—

●

●

Luggage Area

Lashing rings for load restraint

●

●

●

Luggage compartment cover (retractable, removable)

SWB only

●

—

In-Car Entertainment and Technology

Composition Media audio system

6.33" colour touch screen display with proximity sensor, AM/FM radio, CD player (MP3/WMA compatible), SD card slot, external AUX and USB inputs, and six (6) speakers. Car menu with convenience and service settings. Includes display for park distance control. App-Connect ~ USB interface for Apple CarPlay®, Android Auto™ and MirrorLink® in front centre console.

●

—

—

Discover Media audio and satellite navigation system

6.33" colour touch screen display with proximity sensor, AM/FM radio, CD player (MP3/WMA compatible), 2 x SD card slots for music and navigation data, external AUX and USB inputs, and six (6) speakers. 2D and 3D (bird's eye) map views. Car menu with convenience and service settings. Includes display for park distance control. App-Connect~ USB interface for Apple CarPlay®, Android Auto™ and MirrorLink® in front centre console. Volkswagen Media Control.

○

●

●

Voice Control (available with Digital Voice Enhancer only)

○

●

●

Digital Voice Enhancer (Available with Voice Control only)

○

●

●

Bluetooth® phone connectivity with contacts display and Bluetooth® audio streaming, operation via touch screen audio unit or Multi-Function Display

●

●

●

Audio, telephone, cruise control and Multi-Function Display controls mounted on steering wheel

●

●

●

12 volt socket in storage box beside gear lever, passenger compartment and luggage area

●

●

●

Instrumentation

Speedometer & tachometer, electronic odometer and trip meter, service interval display, fuel and coolant gauges, low fuel warning light, adjustable illumination

●

●

●

Multi-Function Display (MFD Plus) - trip time, trip length, average and current speed, average and current fuel consumption, display until empty and ambient temperature, digital clock, vehicle status, audio, telephone and navigation (if fitted) menus

●

—

—

Premium Multi-Function Display (MFD Premium) with TFT colour screen - trip time, trip length, average and current speed, average and current fuel consumption, display until empty and ambient temperature, digital clock, vehicle status, audio, telephone and navigation menus

—

●

●

*Safety technologies are not a substitute for the driver's responsibility for the vehicle.

~App-Connect is compatible for selected apps with the latest smartphone versions of iOS and Android.

Comfort & Convenience

	Comfortline	Highline	Executive
Interior Lighting			
Reading lights, front	●	●	●
Convenience lighting in rear	●	●	●
Roof lights in passenger compartment	●	●	●
Step lighting at doors in cab and sliding doors in passenger compartment	●	●	●
Interior Trims			
Decorative inserts, "Dark Silver Brushed" and "Paviano Black"	●	—	—
Decorative inserts, "Structural X" and "Black Glossy"	—	●	—
Decorative inserts, "Linearus" and "Paviano Black"	—	—	●
"MULTIVAN" nameplate on front and rear step inserts	●	—	●
"HIGHLINE" nameplate on front and rear step inserts	—	●	—
Leather-wrapped gearshift knob	●	●	●
Sunshades for side windows in passenger compartment	●	●	●
Moulded headlining in passenger area	●	●	●
Carpet floor covering in cab and passenger compartment	●	●	●
Floor mats in cab (cut pile)	●	●	●
Chrome accents on air vents	●	●	●
Mirrors			
Exterior mirrors (left: convex, right: aspherical)	●	●	●
Exterior mirrors, power adjustable and heated	●	—	—
Exterior mirrors, power adjustable, power folding and heated	—	●	●
Auto dimming breakaway interior rear view mirror	●	●	●
Power Steering			
Rack and pinion power steering	●	—	—
Servotronic (speed-sensitive power steering)	—	●	●
Seating			
Height adjustment for driver's and front passenger's seat	●	—	—
Lumbar support (manually adjustable) for both front seats	●	—	—
Front seats with 12-way power adjustment (slide, seat cushion angle, seat height, recline and 4-way lumbar functions), driver's seat with memory function (3 settings)	—	●	●
Front seat heaters, left and right, separately controllable	○	●	●
Front seat armrests	●	●	●

● Standard ○ Optional Extra — Not available

Comfort & Convenience

	Comfortline	Highline	Executive
Rear seat rail system, allowing longitudinal adjustment	●	●	●
2 x Captain's seats with swivel function and armrests, in 2nd row	●	●	●
3-seater bench with reclining seat mechanism and storage compartment, movable, in 3rd row	●	●	●
Centre armrest for 3-seater bench seat	—	●	●
Child booster seats in 2nd row swivel chairs	○	○	○
Cloth seat covering "Pandu"	●	—	—
Nappa leather appointed seat upholstery*	—	●	●
Overhead grab handles for driver and front passenger	●	●	●
Overhead grab handles for rear seat passengers	●	●	●
A-pillar grab handles for driver and front passenger	●	●	●
B-pillar grab handles for rear seat passengers	●	●	●
Steering Wheel			
3 spoke leather steering wheel	●	●	●
Audio, telephone, cruise control and Multi-Function Display controls mounted on steering wheel	●	●	●
Steering wheel height and tilt adjustment	●	●	●
Storage			
Multi-function table mounted on rail system (includes drink holder, magazine pocket and drawer)	○	●	●
Cooling/warming box (32L capacity)	○	○	○
Front door pockets	●	●	●
Glove compartment with lockable lid	●	●	●
Upper glove compartment with lid	●	●	●
Dash-mounted cup holder (2) with additional storage	●	●	●
Dash-mounted bottle holder	●	●	●
Storage box beside gear lever, with 12 volt socket	●	●	●
Upper storage tray with lid	●	●	●
Storage compartments on side of front seats	●	●	●
Coat hooks throughout passenger area	●	●	●
Front sunvisors with ticket holder and illuminated vanity mirror	●	●	●
Waste bins in the door pockets	●	●	●

Body Builder Items

Electrical interface (terminal block under driver's seat)	○	○	○
---	---	---	---

*Leather appointed seats have a combination of genuine and artificial leather, but are not wholly leather.

Optional Packages

Comfortline

Highline

Executive

Goodnight Package

Multi-flex board bed extension (replaces retractable luggage compartment cover)

Fabric blinds for windows

Reading lamp

Washable bed cover

Three (3) drawers underneath 3-seater bench

Option for SWB only

○

—

*Leather appointed seats have a combination of genuine and artificial leather, but are not wholly leather.

● Standard ○ Optional Extra — Not available

Technical Specification

Engine	2.0 litre TDI340 BlueMotion Technology		2.0 litre TDI450 BlueMotion Technology		
Type	4 cylinder inline turbocharged direct injection diesel with engine Start/Stop system^		4 cylinder inline turbocharged direct injection diesel with engine Start/Stop system^		
Max power, kW @ rpm	103 @ 3,500		150 @ 4,000		
Max torque, Nm @ rpm	340 @ 1,750-2,500		450 @ 1,400-2,400		
Cubic capacity, litres/cc	1,968		1,968		
Bore/stroke, mm	81.0 x 95.5		81.0 x 95.5		
Compression ratio	16.5:1		15.5:1		
Fuel type (recommended)	Diesel DIN EN 590		Diesel DIN EN 590		
	Comfortline (Short Wheelbase)	Comforline (Long Wheelbase)	Highline (Short Wheelbase)	Highline 4MOTION (Short Wheelbase)	Executive (Long Wheelbase)
Transmission	7 Speed Direct Shift Gearbox (DSG) with sport mode and Tiptronic function) includes coasting feature.				
Driven wheels	Front Wheel Drive	Front Wheel Drive	Front Wheel Drive	All Wheel Drive	Front Wheel Drive
Fuel Consumption **					
Combined, L/100km	7.7	7.7	6.5	6.8	6.5
Urban, L/100km	9.5	9.5	7.5	7.7	7.5
Extra Urban, L/100km	6.7	6.7	5.9	6.3	5.9
Fuel tank capacity, L	80	80	80	80	80
Running Gear					
Suspension	Independent McPherson struts, sub-frame with coil springs and gas filled dampers				
Front Axle	Independent McPherson struts, sub-frame with coil springs and gas filled dampers				
Rear Axle	Semi-trailing independent rear axle with coil springs and anti-roll bar				
Adaptive Chassis Control with Normal / Sport / Comfort modes	—	—	○	○	—
Steering	Rack and pinion power steering		Servotronic (speed-sensitive power steering)		
Brake systems	Anti-lock Braking System (ABS) with Electronic Brake-pressure Distribution (EBD), Brake Assist and Electronic Stabilisation Program (ESP). Brake energy recuperation.				
Brakes	Power assisted Hydraulic				
Front	Ventilated disc 340mm				
Rear	Ventilated disc 294mm				

^The Start/Stop system is designed to reduce fuel consumption and CO2 emissions. It achieves this by automatically switching off the engine while the vehicle is stationary and then starting it again automatically when the driver wants to drive off. There are certain operating conditions where the Start/Stop system is deactivated (e.g. during engine warm-up), please refer to the owner's manual for full operating information.

**Fuel consumption figures according to ADR 81/02 derived from laboratory testing. Factors including but not limited to driving style, road and traffic conditions, environmental influences, vehicle condition and accessories fitted, will in practice in the real world lead to figures which generally differ from those advertised. Advertised figures are meant for comparison amongst vehicles only.

Weights and Capacity

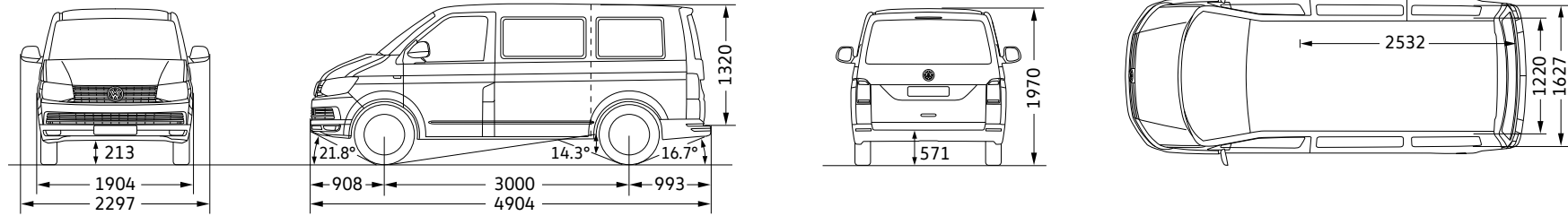
Weights	Comfortline (Short Wheelbase)	Comforline (Long Wheelbase)	Highline (Short Wheelbase)	Highline 4MOTION (Short Wheelbase)	Executive (Long Wheelbase)
Gross Vehicle Weight (GVM, kg)	3,000	3,080	3,080	3,080	3,080
Unladen Mass ¹ (kg)	2,191	2,254	2,302	2,412	2,331
Roof Load (kg)	100	100	100	100	100
Exterior Dimensions					
Wheelbase (mm)	3,000	3,400	3,000	3,000	3,400
Vehicle Length (mm)	4,904	5,304	4,904	4,904	5,304
Vehicle Width (mm) excluding mirrors	1,904	1,904	1,904	1,904	1,904
Vehicle Width (mm) including mirrors	2,297	2,297	2,297	2,297	2,297
Vehicle Height (mm)	1,970	1,990	1,970	1,970	1,990
Front Overhang (mm)	908	908	908	908	908
Rear Overhang (mm)	993	993	993	993	993
Ground Clearance (mm)	213	222	213	213	222
Slope Angle - Front (degrees)	21.8	21.2	21.8	21.8	21.2
Slope Angle - Rear (degrees)	16.7	16.2	17.0	17.0	16.2
Ramp Angle (degrees)	14.3	12.2	13.7	13.7	12.2
Turning Circle (m)	11.9	13.2	11.9	11.9	13.2
Interior					
Seating capacity	7 (2 + 2 + 3)	7 (2 + 2 + 3)	7 (2 + 2 + 3)	7 (2 + 2 + 3)	7 (2 + 2 + 3)
Load Compartment Length (mm) - without rear seats	2,532	2,932	2,532	2,532	2,932
Load Compartment Width (mm) - maximum	1,627	1,627	1,691	1,691	1,627
Load Compartment Width (mm) - at wheel arches	1,220	1,220	1,220	1,220	1,220
Load Compartment Height (mm)	1,320	1,332	1,320	1,320	1,332
Sliding Door Width (mm)	1,011	1,011	1,011	1,011	1,011
Sliding Door Height (mm)	1,247	1,247	1,247	1,247	1,247
Tailgate Width (mm)	1,438	1,438	1,438	1,438	1,438
Tailgate Height (mm)	1,262	1,262	1,262	1,262	1,262
Load Sill Height (mm)	571	574	551	551	574
Towing Capacity (kg)					
Braked [‡]	2,500	2,500	2,500	2,500	2,500
Unbraked	750	750	750	750	750
Towbar Load Limit (kg)	100	100	100	100	100

1. The Unladen Mass (UM) includes 10L of fuel, vehicle fluids and no occupants. Figures quoted are for base model vehicles only.

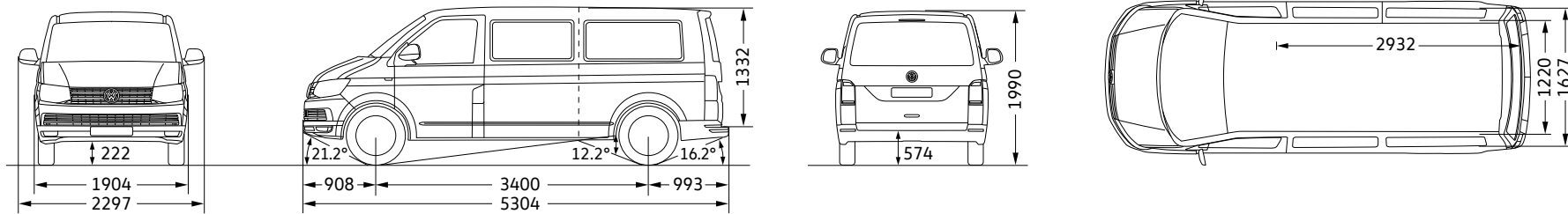
‡ Please note, Volkswagen Group Australia does not endorse or will not be held liable for any claim, loss or damage arising from the use or fitment of electronic trailer brakes.

Dimensions

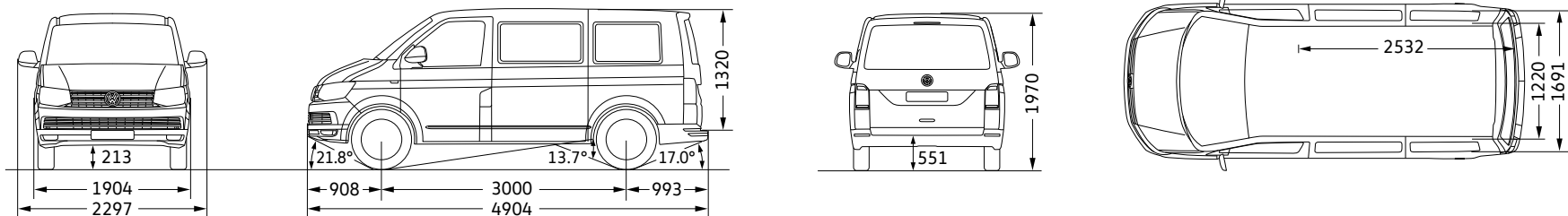
Multivan Comfortline



Multivan Comfortline LWB / Multivan Executive



Multivan Highline



Colour & Trim

Solid paint finishes



Candy White | Solid paint finish | B4B4



Cherry Red | Solid paint finish | 4B4B

Metallic and Pearlescent paint finishes



Reflex Silver | Metallic paint finish | 8E8E



Indium Grey | Metallic paint finish | X3X3



Starlight Blue | Metallic paint finish | 3S3S



Acapulco Blue | Metallic paint finish | 2W2W



Bamboo Green | Metallic paint finish | 3T3T



Mojave Beige | Metallic paint finish | 1B1B



Chestnut Brown | Metallic paint finish | H4H4

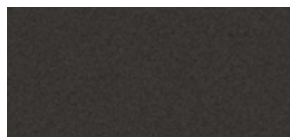


Oryx White Pearl | Pearl effect paint finish | 0R0R

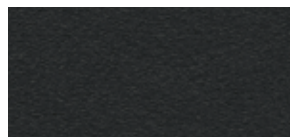


Deep Black | Pearl effect paint finish | 2T2T

Seat upholstery



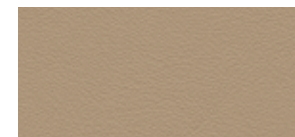
Pandu | Cloth seat upholstery | Titanium Black | CL



Alcantara® leather appointed seat upholstery | Titanium Black | CL



"Nappa" leather appointed seat upholstery | Titanium Black | HL | EX |



"Nappa" leather appointed seat upholstery | Desert Beige | HL | EX |



"Nappa" leather appointed seat upholstery | Moon Rock Grey | HL | EX |

Please note that Metallic and Pearl Effect paint are optional at extra cost. The print process does not allow for exact reproduction of the exterior or the upholstery colours. Please contact your Volkswagen Dealer for further information on colours and upholstery combinations. ~Leather appointed seats have a combination of genuine and artificial leather, but are not wholly leather.

Volkswagen Choice: Protecting your investment.

Volkswagen Choice

Guaranteed Future Value

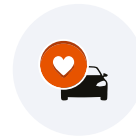
We're out to prove that there still are some guarantees in life. We've developed Volkswagen Choice[^] - a flexible finance solution that provides you with the assurance of knowing exactly what the minimum value of your vehicle will be down the track. With Volkswagen Choice[^], you can enjoy your car without worrying about what the future will bring, providing peace of mind.

At the end of your term,
you can simply choose to:



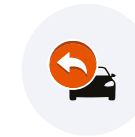
Trade-in

Your existing vehicle and purchase a new Volkswagen under the Volkswagen Choice Program



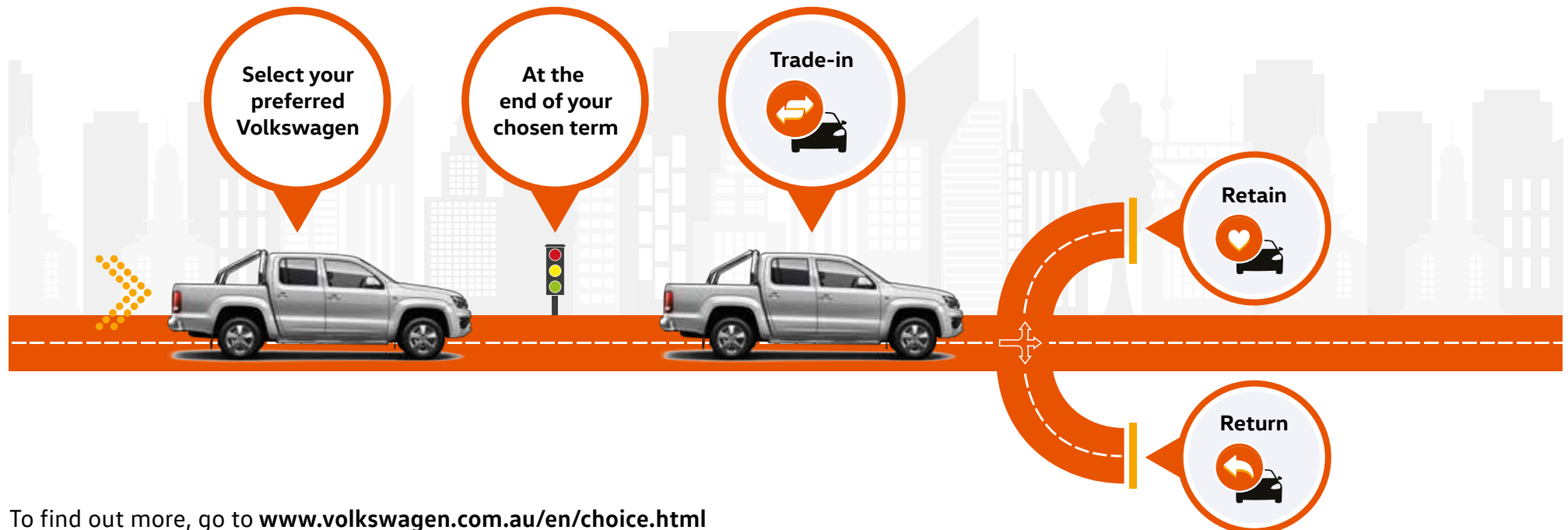
Retain

Make an offer to purchase/ refinance the vehicle



Return

Hand the vehicle back and receive the Guaranteed Future Value[#]



To find out more, go to www.volkswagen.com.au/en/choice.html

[^]The Volkswagen Choice Program consists of an option to require Volkswagen Financial Services to purchase your vehicle at the end of your Volkswagen Financial Services Chattel Mortgage or Consumer Loan for a value (known as the Guaranteed Future Value) determined by Volkswagen Financial Services and set out in your contract. [#]The Guaranteed Future Value is not a representation by Volkswagen Financial Services as to the likely market value of your vehicle as at the end of your contract. The option is available on new and demonstrator Volkswagen vehicles for selected models only. Please verify with your dealership vehicles that are eligible for the program. If vehicles are not returned in an acceptable condition, as defined in the terms and conditions or exceed kilometre restrictions the Guaranteed Future Value will be reduced. See the Volkswagen Choice Fair Wear and Tear Guide for more information on the required conditions and circumstances. The cost of the Volkswagen Choice Program is incorporated into the applicable interest rate. Please read the full terms and conditions. Please consider whether these products and services are appropriate for your circumstances. Before acting on any of the information on this page, please seek independent financial and tax advice. Full terms and conditions are available upon application. Available only to approved applicants of Volkswagen Financial Services. Subject to credit assessment. Fees and charges apply. Fleet, government, rental buyers, hire car and chauffeur companies are excluded. Available at participating Volkswagen dealers. Volkswagen Financial Services is a trading name of Volkswagen Financial Services Australia Pty Limited ABN 20 097 071 460. Australian Credit Licence 389344

General information

Owning a Volkswagen

Volkswagen New Vehicle Warranty

Every new Volkswagen vehicle is covered by a three-year unlimited kilometre manufacturer's warranty, which includes Volkswagen Assist (24-hour roadside assistance). Every new Volkswagen vehicle is also covered by a 3 year paintwork and 12-year anticorrosion perforation warranty. For further information regarding this New Vehicle Warranty, including pricing and terms and conditions, please consult your local Volkswagen dealer or visit www.volkswagen.com.au

Volkswagen Assist – 24-Hour Roadside Assistance

As a valued customer, you can be assured that wherever you travel within Australia, you will have access to roadside assistance, 24 hours a day, 365 days a year. This is complimentary for the duration of the vehicle's original Volkswagen warranty period. You will receive help in the event of a breakdown or accident and, if required, your vehicle will be mobilised or transported to an Authorised Volkswagen Workshop. As a Volkswagen owner you will also have access to the additional benefits of accommodation and car rental if your vehicle cannot be mobilised within 24 hours, when you are over 100km away from home.

Volkswagen Genuine Parts®

Volkswagen Genuine Parts® are designed for your vehicle and approved by Volkswagen, with particular regard to safety. The workmanship, dimensional accuracy and materials used in these parts comply with factory specifications. To ensure safety and reliability, Volkswagen recommends the use of Volkswagen Genuine Parts®. Volkswagen Authorised Dealers offer a two-year unlimited kilometre warranty on Genuine Parts from the date of purchase.

Volkswagen Financial Services

Buying, borrowing or leasing, Volkswagen Financial Services will certainly make you think differently about financing and insuring your new Volkswagen. Committed to meeting the needs of Volkswagen drivers across Australia, we offer a range of leasing, financing and insurance products, each with distinct advantages depending on your specific circumstances. We can tailor a solution to suit your individual requirements, so you can rest assured that there will be no surprises along the way. Speak to your local participating authorised Volkswagen Dealer today to put together a solution that best suits your lifestyle.

Volkswagen Choice Guaranteed Future Value^

Volkswagen Choice is a finance program available to approved applicants of Volkswagen Financial Services only, which provides Volkswagen owners protection around your Volkswagen's future value#, whilst offering a simple monthly instalment financing option. Enjoy the peace of mind of knowing the minimum value you can receive for your vehicle at the end of your contracted term. You can choose to either trade-in, return or retain your Volkswagen – it's your choice. Learn more about how to protect your investment by visiting www.volkswagen.com.au/en/choice.html today.

Volkswagen Assured Service

What you can expect as standard when servicing through our authorised Volkswagen dealer network is an expert team, trained by Volkswagen utilising specialist Volkswagen diagnostic equipment ensuring they're able to cater for all of your Volkswagen's servicing and repair needs. They also have access to the full Volkswagen Genuine Parts catalogue making sure any part replaced during a service or repair is replaced with a Volkswagen Genuine Part. What's more, your Volkswagen will be returned in immaculate condition, cleaned and vacuumed. Add these together and you can rest assured there's no better place to keep your Volkswagen running like a Volkswagen.

^The Volkswagen Choice Program consists of an option to require Volkswagen Financial Services to purchase your vehicle at the end of your Volkswagen Financial Services Chattel Mortgage, Consumer Loan or Hire Purchase for a value (known as the Guaranteed Future Value) determined by Volkswagen Financial Services and set out in your contract. The Guaranteed Future Value is not a representation by Volkswagen Financial Services as to the likely market value of your vehicle as at the end of your contract. The option is available on new and demonstrator Volkswagen vehicles for selected models only. Please verify with your dealership vehicles that are eligible for the program. #If vehicles are not returned in an acceptable condition, as defined in the terms and conditions or exceed kilometre restrictions the Guaranteed Future Value will be reduced. See the Volkswagen Choice Fair Wear and Tear Guide for more information on the required conditions and circumstances. The cost of the Volkswagen Choice Program is incorporated into the applicable interest rate. Please read the full terms and conditions. Please consider whether these products and services are appropriate for your circumstances. Before acting on any of the information on this page, please seek independent financial and tax advice. Full terms and conditions are available upon application. Available only to approved applicants of Volkswagen Financial Services. Subject to credit assessment. Fees and charges apply. Fleet, government, rental buyers, hire car and chauffeur companies are excluded. Available at participating Volkswagen dealers. Volkswagen Financial Services is a trading name of Volkswagen Financial Services Australia Pty Limited ABN 20 097 071 460. Australian Credit Licence 389344.

The Multivan

Volkswagen Group Australia Pty Ltd
24 Muir Road Chullora NSW 2190
ABN 14 093 117 876

Printed in Australia
August 2017
www.volkswagen.com.au

Publication: VWCMULSPECMY18

Your Volkswagen dealer.

Important information

Apple CarPlay® is a registered trademark of Apple Inc. Android Auto™ is a registered trademark of Google Inc. MirrorLink® is a registered trademark of Car Connectivity Consortium LLC. Bluetooth® is a registered trademark of Bluetooth SIG Inc. Alcantara® is a registered trademark of Alcantara S.p.A.

Volkswagen is distributed by Volkswagen Group Australia Pty Ltd, 24 Muir Road, Chullora, NSW 2190, ABN 14 093 117 876. Specifications are as planned at August 2017, for Model Year 18 and are subject to change without notice or obligation. All information in this brochure is correct at the time of publication, however variations may occur from time to time and Volkswagen, in so far as it is permitted by law to do so, shall not be liable in any way as a result of any reliance by any person on anything contained in this brochure. Authorised Volkswagen dealers will provide up-to-date information on model application, design feature, prices and availability on request. All colours are a general guide only, as the printing process cannot reproduce the actual exterior colour appearance. See your dealer to confirm colour/model availability.