



Commercial
Vehicles



The Amarok

Pretty, Rugged

Uncompromising off-road. Spirited on the asphalt

The Amarok combines everything that you expect from an exclusive, premium, class leading vehicle.

Unique drive combination

The enhanced grip of the Permanent 4x4 (4MOTION) system paired with an 8-speed automatic gearbox. Selectable 4x4 system with high and low range available with variants fitted with the 6 speed manual gearbox

Powerful Diesel engines

Choice of three engines - a responsive 2.0L 4-cylinder engine with 132kW of power and up to 420Nm of torque (400Nm for manual transmission) and two V6 3.0L engines - 165kW with 550Nm of torque (500Nm for manual transmission) or 190kW and 580Nm of torque

Overboost

Unique to Amarok V6 models you can have more overtaking power on tap with a quick burst delivering up to 180kW for TDI500 and TDI550 variants or 200kW for TDI580

Striking exterior design

An aggressive exterior look, combined with alloy wheels, makes the Amarok range everything you expect from a premium, class leading vehicle

Modern interior design

Redesigned dash panel, including air-vents and upper dash storage space

Advanced infotainment systems

New audio and navigation system, along with App-Connect™ and voice recognition

Multi-Collision Braking System*

This new system triggers braking post collision to help prevent secondary collisions

Largest tray in its class

With a load area over 2.5m² in area and able to fit a pallet between the wheel arches

Stopping Power

Unique to the Amarok V6 models are 332mm disc brakes up front and 300mm disc brakes in the rear

High level of grip on every terrain

Outstanding off-road ABS and Hill Descent Assist



~App-Connect is compatible for selected apps with the latest smartphone versions of iOS and Android, active data service, and connection cable (sold separately).
*Safety technologies are designed to assist the driver, but should not be used as a substitute for safe driving practices.

Core V6 model shown

Amarok V6 Range

Standard equipment Amarok Core 4x4

Exterior

- 16-inch 'Korama' alloy wheels
- Halogen headlights with daytime running lights
- Park distance control rear with reverse camera*
- Black rear bumper with step

Interior

- Austin cloth seat upholstery
- Instrument cluster with multi-function Plus display
- Leather-covered multi-function steering wheel
- Cruise control
- Single zone air conditioning system
- Composition Media audio system
- App-Connect™ USB interface
- Rear parking sensors with Rear View Camera*
- Multi-Collision Braking system*

Standard equipment Amarok Core V6

Exterior

- 17-inch Posadas alloy wheels
- Radiator grille with chrome element
- Extended wheel arches
- Front fog lights

Interior

- Austin cloth seat upholstery
- Instrument cluster with multi-function Plus display
- Leather-covered multi-function steering wheel
- Cruise control
- Single zone air conditioning system
- Composition Media audio system
- App-Connect™ USB interface
- Rear parking sensors with Rear View Camera*
- Multi-Collision Braking system*

Standard equipment Amarok Sportline V6

Core V6, plus:

Exterior

- 18-inch Manaus alloy wheels
- Radiator grille with chrome elements
- Comfort closing lockable rear tailgate
- Colour-coated exterior mirrors, partially chromed
- Rear privacy glass
- Rear bumper, chromed, with integrated step
- Tinted tail lights

Interior

- Salipra cloth seat upholstery
- Dash panel with decorative inserts in bright silver
- Dual-zone Climatronic air conditioning system
- Four 12V sockets, (three in cabin and one in tray)
- Front and rear parking sensors with Rear View Camera*

Standard Equipment Amarok Highline V6 TDI580

Sportline V6, plus:

Exterior

- 18-inch Rawson alloy wheels
- Bi-xenon headlights with LED daytime running lights
- Stainless steel styling bar
- Stainless steel side steps
- Front fog lights with cornering function

Interior

- Discover Media navigation system
- Alarm with interior monitoring
- Safelock (deadlocking) system

Standard equipment Amarok Aventura V6 TDI580

Highline V6 580, plus:

Exterior

- Silver 20-inch Talca alloy wheels
- Moulded styling bar (body coloured)
- Stainless steel side steps with illumination
- Special cargo area coating

Interior

- Nappa leather appointed upholstery# in black
- ergoComfort seats for driver and front passenger (14-way electric, 2-way manual)
- Instrument cluster with Premium Colour multi-function display
- Leather-covered multi-function steering wheel with paddle shifters
- Stainless steel pedals
- Tailored carpet mats



When Power Is Everything **V6**

The legendary Volkswagen 2.0L TDI engine The 2.0L TDI 4-cylinder engine

With up to 132kW of power and 420Nm of torque, the 2.0 TDI has proven itself as worksite and bush trail ready. With not one but two turbo-chargers, this Bi-turbo unit delivers power and torque from super low revs ensuring a smoother and more enjoyable driving experience.

2.0L TDI400 (132kW, 400Nm)

Fuel consumption (combined) 8.4L / 100km**
CO₂ emissions: 220 g/km

2.0L TDI420 (132kW, 420Nm)

Fuel consumption (combined) 8.9L / 100km**
CO₂ emissions: 234 g/km



3.0L TDI500 (165kW, 500Nm) Overboost function up to 180kW

Fuel consumption (combined) 9.7L / 100km**
CO₂ emissions: 254 g/km

3.0L TDI550 (165kW, 550Nm) overboost function up to 180kW

Fuel consumption (combined) 9.1L / 100km**
CO₂ emissions: 240 g/km

3.0L TDI580 (190kW, 580Nm) overboost function up to 200kW

Fuel consumption (combined) 9.5L / 100km**
CO₂ emissions: 250 g/km

Powerful like no other The V6 3.0L TDI engine

Available in three power outputs producing 165kW and 550Nm of torque (500Nm for manual transmissions) or 190kW and 580Nm of torque. The V6 turbodiesel engine has more than enough power reserves even in the most demanding situations. With Overboost, you can ramp up the power even more when you need it most with a quick burst of either up to 180kW or 200kW, depending on your engine, while also prolonging maximum torque delivery. Optimised in 3rd and 4th gear, the Overboost function increases the engine's output for up to ten seconds, making it ideal for overtaking.

Permanent 4MOTION



01

8-speed automatic gearbox



03

Selectable 4MOTION



02

01 Permanent 4x4. This always-on 4x4 system with Torsen differential excels on all surfaces. Torque is mechanically distributed from front to rear (40:60) with the ability to drive distribution to each wheel optimised by traction control intervention (available with automatic transmission only).

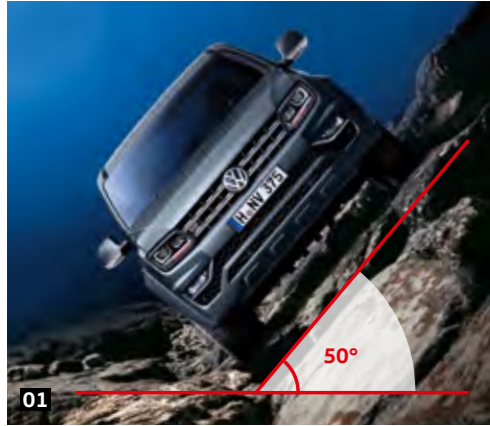
02 Selectable 4x4. The 4x4 drive system with a transfer case enables the front wheels to be electrically engaged and disengaged while driving. On steep inclines or longer stretches of challenging terrain an additional reduction gear set can also be engaged (available with manual transmission only).

03 8-speed automatic gearbox. The Amarok is the only vehicle in its class that offers the flexibility and performance of the 8-speed automatic transmission. The 1st gear is designed for off-road driving, whereas the 8th gear is optimised for economy driving at highway speeds.

04 6-speed manual gearbox and Selectable 4x4 4MOTION (not illustrated). The robust 6-speed manual gearbox offers responsive and smooth gear changes for all driving conditions. The manual transmission is combined with the dual range Selectable 4x4 system (available on Core models only).

**Fuel consumption figures according to Australian Design Rule (ADR) 81/02 derived from laboratory testing. Factors including but not limited to driving style, road and traffic conditions, environmental influences, vehicle condition and accessories fitted, will in practice in the real world lead to figures which generally differ from those advertised. Advertised figures are meant for comparison amongst vehicles only.

King Of The Hill



01



03



02



04

01 Side slope angle. The broad track of the Amarok provides enormous stability even when driving along slopes with up to a 50° incline.¹

02 High-climbing ability. The Amarok handles 100% (45°) grades with up to maximum payload.¹

03 Off-road ABS. Once activated, the wheels lock when braking on loose surfaces with a larger interval, essentially creating a wedge which significantly reduces the braking distance. This noticeably increases the driving safety.

04 Approach/departure angle and wading depth. The maximum slope angle for the Amarok is 28.0° at the front and 23.6° at the rear. It can handle pools with a wading depth of 500 mm.

100% incline, 50° gradient
and off-road ABS
**Outstanding all terrain
performance**

Asphalt, dirt, gravel. In the Amarok you will experience the ultimate in driving capability on almost any terrain. It combines high ground clearance with rigid body stability along with the proven 4MOTION all-wheel drive system. This vehicle also comes into its own on the road, with the Torsen® differential significantly increasing traction while cornering.



Highline model shown

¹ Figures may vary depending on the equipment line and engine type. Please note that these are statically calculated figures.



Premium equipment
The only vehicle in its class with ergoComfort seats

The Amarok Aventura (shown) offers a premium leather appointed upholstery seats#, rear grab handles and individual map lamps. In addition, the Amarok Aventura offers a leather-wrapped multi-function steering wheel with shift paddles as well as front 14-way adjustable ergoComfort seats.

Leather appointed seats have a combination of genuine and artificial leather, but are not wholly leather.



01 Composition Media system
The crystal clear 6.33" colour touch screen is packed with the latest multimedia functions, including App-Connect™ and Bluetooth®. For added convenience the telephone functions can be voice activated.
| CE | CE6 | SL |



02 App-Connect™
With this function, compatible apps are mirrored from your smart phone to the touch screen of the radio or navigation system display via the USB port and controlled using the touchscreen.
| CE | CE6 | SL | HL | AV |



03 Discover Media navigation system.
In addition to the functions of the Composition Media radio system with six loud speakers, there is a second integrated SD-card slot which is compatible with the SD-card with the map data.
| HL | AV |



04 Voice Control.
You are free to operate the telephone and audio functions without taking your hands off the steering wheel. Furthermore, you can call up virtually all menus and notifications on the radio using voice control.
| CE | CE | CE6 | SL | HL | AV |



05 Climatronic air conditioning. This system offers 2-zone temperature control for the driver and front passenger. Depending on the intensity of the sun's rays and the outside temperature, the air conditioning adds more or less cool air accordingly.
| SL | HL | AV |

*App-Connect is compatible for selected apps with the latest smartphone versions of iOS and Android, active data service, and connection cable (sold separately).



01 Cargo area coating. The UV-resistant special coating in anthracite provides excellent protection against mechanical and chemical wear. | AV |



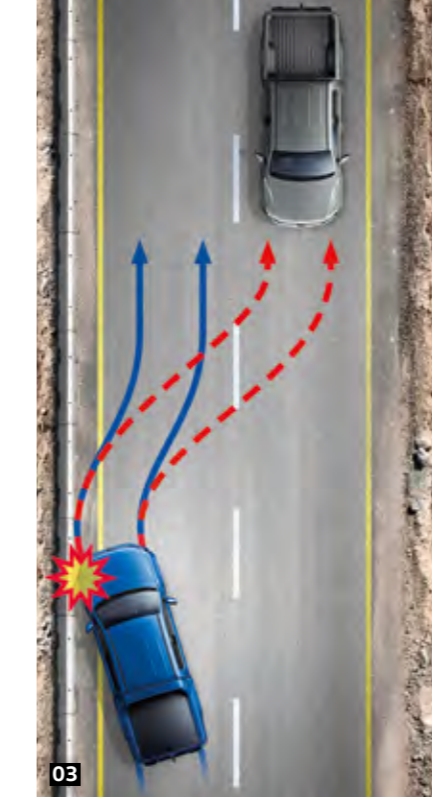
02 Load light. The exterior load light helps illuminate the tray, ideal for early starts or late finishes. | CE | CE6 | SL |

The smoothest moving tailgate. The comfort feature makes opening and closing the tailgate a breeze, while still rated to carry up to 200kg. | SL | HL | AV |

12V socket (not illustrated). A 12V socket is fitted on the inside of the left side panel. | SL | HL | AV |

Packs a pallet The widest tray in its class

No other pickup provides so much space between the wheel arches: the loading width of 1,222 mm even enables Euro pallets to be loaded crosswise. The spacious cargo box with a 2.52 m² load surface features convincing dimensions – such as the 508 mm high side panels and the low loading sill height of 780 mm.



Safety systems*

03 Automatic Post-Collision Braking System (MCB). Triggers braking after a collision, with the aim of preventing secondary collisions. After a short delay, the vehicle begins phased braking action down to 10 km/h. | CE | CE6 | SL | HL | AV |

Electronic Stability Programme (not illustrated). Prevents under or over-steering via targeted braking of individual wheels. | CE | CE6 | SL | HL | AV |

Front and head/thorax airbags (not illustrated) for the driver and front passenger. | CE | CE6 | SL | HL | AV |

Height-adjustable head restraints (not illustrated) and 3-point seatbelts are featured throughout, with pretensioners on the front seats. | CE | CE6 | SL | HL | AV |

332mm disc brakes in the front, 300mm disc brakes in the rear (not illustrated). Offer an optimum performance during high brake loads. | CE6 | SL | HL | AV |

Trailer Stabilisation (not illustrated). Configured for the Genuine Volkswagen tow bar wiring to compliment the Electronic Stability Programme, helping to reduce trailer sway. | CE | CE6 | SL | HL | AV |



Driver assistance systems*

04 Static cornering light. Ensures optimal visibility in poor weather conditions. The fog light nearest to the corner illuminates the roadside when turning. | HL | AV |

05 Rear View Camera. Simplifies reversing by showing a limited view of the area behind the vehicle on the display. Static guidelines facilitate the parking process. | CE | CE6 | SL | HL | AV |

Hill Start Assist (not illustrated). Prevents the vehicle from rolling back on inclines and makes it easier to start off on uphill slopes. | CE | CE6 | SL | HL | AV |

Hill Descent Assist (not illustrated). Allows you to drive down slopes in a safe, controlled way by governing the engine speed and applying the brakes, if necessary. | CE | CE6 | SL | HL | AV |

Park Pilot (not illustrated). Emits audible warnings when obstacles are detected behind the vehicle when parking. | CE | CE6 | Emits audible warnings at the front and rear of the vehicle when parking. | SL | HL | AV |

Cruise control (not illustrated). As of a speed of 30 km/h, it maintains the set speed depending on uphill and downhill inclines. | CE | CE6 | SL | HL | AV |

Tyre Pressure Monitoring System (not illustrated). Warns when there is a deviation in tyre pressure and indicates the driver to check tyre pressure as soon as possible. | HL | AV |

Mechanical rear differential lock (not illustrated). When activated ensures both rear wheels receive the same amount of power and rotations. This offers optimal traction on sandy or slippery surfaces. | CE | CE6 | SL | HL | AV |

Tough Not Rough

Sporty and distinctive
Create a strong impression

With its stainless steel styling bar and side steps, striking front design and 18-inch Rawson alloy wheels, the Amarok Highline model creates a strong impression.

The frontal design features two double chrome strips, honeycomb grille highlights and a more aggressive fog light design.



V6

Highline model shown

Technical Specifications - 4 Cylinder Range

Engine	TDI400 4x4	TDI420 4x4
Type	4 cylinder Bi-turbo diesel, DOHC, 16 valve	
Cubic capacity, litres/cc	2.0 / 1,968	
Max power, kW @ rpm	132 @ 4,000	132 @ 4,000
Max torque, Nm @ rpm	400 @ 1,500 - 2,250	420 @ 1,750
Compression ratio	16.01:1	
Fuel system	Common Rail Direct Injection	
Exhaust emission control	Water-cooled exhaust gas recirculation (EGR), catalytic converter and diesel particulate filter (DPF)	
Fuel type (Recommended)	Diesel EN 590	
Transmission	6 Speed Manual	8 Speed Automatic
Driven wheels	4x4 (4MOTION) Selectable	4x4 (4MOTION) Permanent
Gear Ratios	Final Drive: 4.10 1st Gear: 3.583 2nd Gear: 1.889 3rd Gear: 1.114 4th Gear: 1.00 5th Gear: 0.564 6th Gear: 0.473	Final Drive: 3.70 1st Gear: 4.714 2nd Gear: 3.143 3rd Gear: 2.106 4th Gear: 1.667 5th Gear: 1.285 6th Gear: 1.00 7th Gear: 0.839 8th Gear: 0.667 Reverse Gear: 3.300
Fuel consumption**		
Combined, L/100km	8.4	8.9
Urban, L/100km	10.1	11.0
Extra Urban, L/100km	7.4	7.7
CO ₂ emissions, g/km	220	234
Fuel tank capacity, litres	80	80
Towbar Capacity#		
Braked, kg	3000	
Unbraked, kg	750	
Towball load limit, kg	300	

**Fuel consumption figures according to Australian Design Rules (ADR) 81/02 derived from laboratory testing. Factors including but not limited to driving style, road and traffic conditions, environmental influences, vehicle condition and accessories fitted, will in practice in the real world lead to figures which generally differ from those advertised. Advertised figures are meant for comparison amongst vehicles only.

#When fitted with Volkswagen Genuine Tow Bar. Towing capacities are applicable to Volkswagen Genuine Accessory Tow Bar. Towing capacity figures are maximum figures and actual towing capacity depends on factors including the laden mass of the vehicle, driving conditions and fitment of any accessories. Volkswagen Group Australia does not endorse or will not be held liable for any claim, loss or damage arising from the use or fitment of electronic trailer brakes.

Technical Specifications - 4 Cylinder Range

Running Gear	2.0 litre, 4 cylinder TDI	
Suspension	Transverse link with A-frame arm double wishbone and anti-roll bar	
Front axle	Multi-layer rigid axle with leaf spring and stabiliser bar	
Rear axle	Multi-layer rigid axle with leaf spring and stabiliser bar	
Steering	Power assisted rack & pinion steering	
Brake systems	Anti-lock Braking System (ABS) with Electronic Brake-pressure Distribution (EBD), Brake Assist and Electronic Stabilisation Program (ESP)	
Brakes	303, Ventilated Discs / 295, Drum	
Front / Rear, mm	303, Ventilated Discs / 295, Drum	
Brake systems	ESP, off-road ABS, ASR, EDL, Hill Holder, Brake Assist, Traction Control and Off-Road ABS including Hill Descent	
Turning circle, m	12.95	
Weights	TDI400 4x4 Core	TDI420 4x4 Core
Unladen Mass, kg	2,007	2,022
Payload, kg	1,033	1,018
Gross Vehicle Mass (GVM) kg	3,040	3,040
Gross Combined Mass (GCM) kg	5,550	5,550
Roof load, kg	100	100

Dimensions

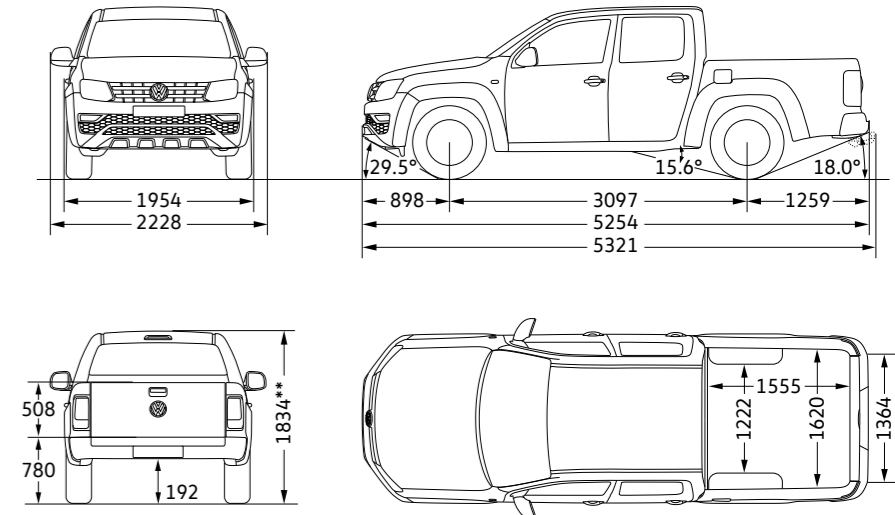
Exterior Dimensions	TDI400 Core 4x4	TDI420 Core 4x4
Overall length mm	5,254	5,254
Width mm	1,944	1,954
Width incl. mirrors mm	2,228	2,228
Height mm	1,834	1,878 [^]
Wheelbase mm	3,097	3,097
Ground clearance mm	226	226
Entry angle	28.0	28.0
Departure angle	23.6	23.6
Ramp angle	23.0	23.0
Wading depth, mm	500	500
Tray Dimensions		
Length, mm	1,555	
Width, mm (Max.)	1,620	
Width, mm (between wheel arches)	1,222	
Tailgate opening, mm (Max.)	1,364	
Height (tailgate), mm	508	
Height from ground, mm	780	

[^]Including sports bar

[‡]Payload is defined as the Gross Vehicle Mass (GVM) minus the Kerb Mass. Payload is the maximum combined weight of occupants, cargo, added structures and tow ball down weight (when towing). GVM must not be exceeded.

**Height shown without sports bar.

Amarok Dual Cab



Technical Specifications - 6 Cylinder Range

Engine	3.0 litre V6 TDI500	3.0 litre V6 TDI550	3.0 litre V6 TDI580
Type	6 cylinder turbo diesel, 24 valve	6 cylinder turbo diesel, 24 valve	6 cylinder turbo diesel, 24 valve
Cubic capacity, litres/cc	3.0 / 2,967	3.0 / 2,967	3.0 / 2,967
Max power, kW @ rpm	165 @ 3,250 - 4,500	165 @ 2,500 - 4,500	190 @ 3,250 - 4,500
Max torque, Nm @ rpm	500 @ 1,250 - 3,000	550 @ 1,500 - 2,500	580 @ 1,400 - 3,000
Compression ratio	17.0:1	17.0:1	17.0:1
Fuel system	Bosch EDC17 electronic engine control unit	Bosch EDC17 electronic engine control unit	Bosch EDC17 electronic engine control unit
Exhaust emission control	Water-cooled exhaust gas recirculation (EGR), catalytic converter and diesel particulate filter (DPF)	Water-cooled exhaust gas recirculation (EGR), catalytic converter and diesel particulate filter (DPF)	Water-cooled exhaust gas recirculation (EGR), catalytic converter and diesel particulate filter (DPF)
Fuel type (Recommended)	Diesel EN 590	Diesel EN 590	Diesel EN 590

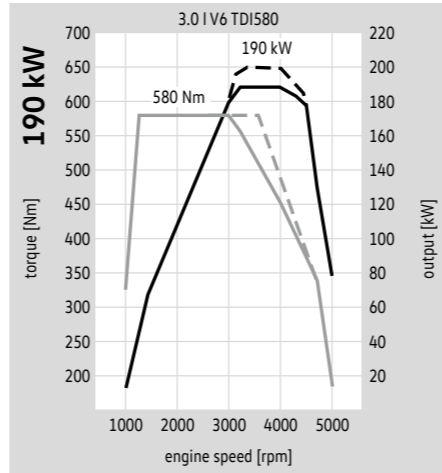
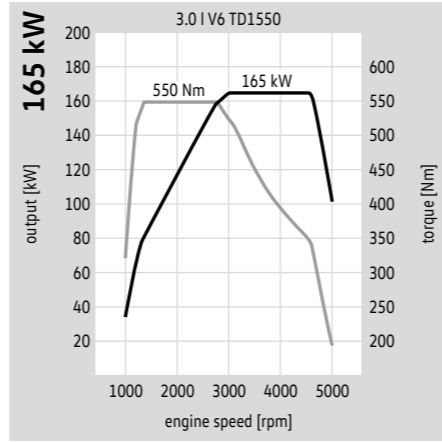
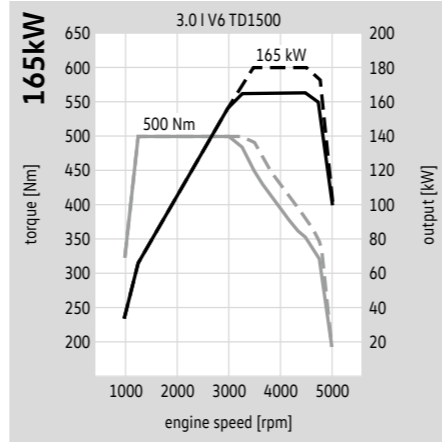
Transmission	6 Speed Manual	8 Speed Automatic	8 Speed Automatic
Driven wheels	4x4 (4MOTION) Selectable	4x4 (4MOTION) Permanent	4x4 (4MOTION) Permanent
Gear Ratios	1st Gear: 5.070 2nd Gear: 2.614 3rd Gear: 1.524 4th Gear: 1.000 5th Gear: 0.770 6th Gear: 0.657 Reverse Gear: 4.823	1st Gear: 4.714 2nd Gear: 3.143 3rd Gear: 2.106 4th Gear: 1.667 5th Gear: 1.285 6th Gear: 1.00 7th Gear: 0.839 8th Gear: 0.667 Reverse Gear: 3.317	1st Gear: 4.714 2nd Gear: 3.143 3rd Gear: 2.106 4th Gear: 1.667 5th Gear: 1.285 6th Gear: 1.00 7th Gear: 0.839 8th Gear: 0.667 Reverse Gear: 3.317

Performance#			
0 - 100km/h, seconds	xx	7.9	7.3

Fuel consumption**			
Combined, L/100km	9.7	9.1	9.5
Urban, L/100km	11.4	10.6	11.4
Extra Urban, L/100km	8.6	8.3	8.4
CO ₂ emissions, g/km	254	240	250
Fuel tank capacity, litres	80	80	80

Towbar Capacity#	Core V6 Manual	Core V6	Sportline V6	Highline V6	Aventura V6
Braked kg	3,000	3,500	3,500	3,500	3,500
Unbraked, kg	750	750	750	750	750
Towball load limit, kg	300	300	300	300	300

#Please note figures are sourced from overseas data where equipment levels by model variant may vary.
 **Fuel consumption figures according to Australian Design Rules (ADR) 81/02 derived from laboratory testing. Factors including but not limited to driving style, road and traffic conditions, environmental influences, vehicle condition and accessories fitted, will in practice in the real world lead to figures which generally differ from those advertised. Advertised figures are meant for comparison amongst vehicles only.
 #When fitted with Volkswagen Genuine Tow Bar. Towing capacities are applicable to Volkswagen Genuine Accessory Tow Bar. Towing capacity figures are maximum figures and actual towing capacity depends on factors including the laden mass of the vehicle, driving conditions and fitment of any accessories. Volkswagen Group Australia does not endorse or will not be held liable for any claim, loss or damage arising from the use or fitment of electronic trailer brakes.



Technical Specifications - 6 Cylinder Range

Running Gear	3.0 litre V6 TDI500	3.0 litre V6 TDI550	3.0 litre V6 TDI580
Suspension	Transverse link with A-frame arm, double wishbone and anti-roll bar	Transverse link with A-frame arm, double wishbone and anti-roll bar	Transverse link with A-frame arm, double wishbone and anti-roll bar
Front axle	Multi-layer rigid axle with leaf spring and stabiliser bar	Multi-layer rigid axle with leaf spring and stabiliser bar	Multi-layer rigid axle with leaf spring and stabiliser bar
Rear axle	Power assisted rack & pinion steering	Power assisted rack & pinion steering	Power assisted rack & pinion steering
Steering			
Brakes			
Front / Rear, mm	Ventilated, 332 / Ventilated, 300	Ventilated, 332 / Ventilated, 300	Ventilated, 332 / Ventilated, 300
Brake systems	ESP, ABS, ASR, EDL, Hill Holder, Brake Assist, Traction Control and Off-Road ABS including Hill Descent	ESP, ABS, ASR, EDL, Hill Holder, Brake Assist, Traction Control and Off-Road ABS including Hill Descent	ESP, ABS, ASR, EDL, Hill Holder, Brake Assist, Traction Control and Off-Road ABS including Hill Descent
Turning circle, m	12.95	12.95	12.95

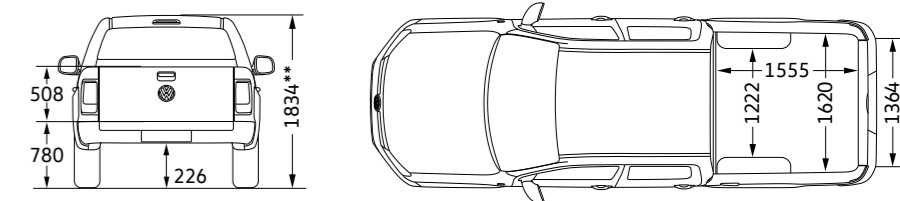
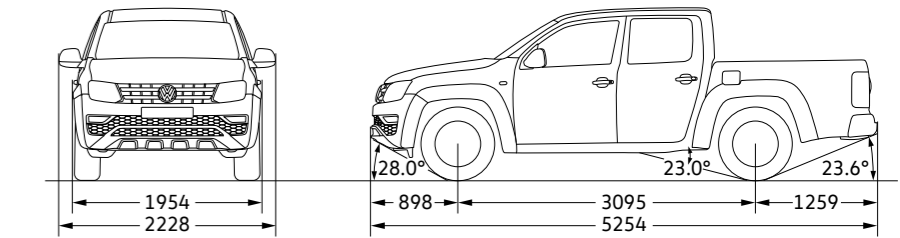
Weights	Core V6 Manual	Core V6	Sportline V6	Highline V6	Aventura V6
Unladen Mass, kg	2,076	2,091	2,104	2,147	2,244
Payload, kg †	1,004	989	976	933	836
Gross Vehicle Mass (GVM), kg	3,080	3,080	3,080	3,080	3,080
Gross Combined Mass (GCM), kg	5,550	6,000	6,000	6,000	6,000
Roof load, kg	100	100	100	100	100

Dimensions

Exterior Dimensions	3.0 litre V6 TDI500	3.0 litre V6 TDI550	3.0 litre V6 TDI580
Overall length, mm	5,254	5,254	5,254
Width, mm	1,954	1,954	1,954
Width incl. mirrors, mm	2,228	2,228	2,228
Height, mm (HL)	1,878	1,878	1,878
Height, mm (UL)	1,834	1,834	1,834
Wheelbase, mm	3,097	3,097	3,097
Ground clearance, mm	192	192	192
Entry angle	28.0°	28.0°	28.0°
Departure angle	23.6°	23.6°	23.6°
Ramp angle	23.0°	23.0°	23.0°
Wading depth, mm	500	500	500
Track Front/Rear, mm	1,654 / 1,658	1,654 / 1,658	1,654 / 1,658

Tray Dimensions			
Length, mm	1,555	1,555	1,555
Width, mm (Max.)	1,620	1,620	1,620
Width, mm (between wheel arches)	1,222	1,222	1,222
Tailgate opening, mm (Max.)	1,364	1,364	1,364
Height (tailgate), mm	508	508	508
Height from ground, mm	780	780	780

Amarok Dual Cab (with wheel arch flares and rear step bumper)



* Track figures are based on rim off-set of 45
 † Payload is defined as the Gross Vehicle Mass (GVM) minus the Kerb Mass. Payload is the maximum combined weight of occupants, cargo, added structures and tow ball down weight (when towing). GVM must not be exceeded.
 **Height shown without sports bar.

Volkswagen Accessories

Volkswagen Genuine Accessories ensures your Amarok remains 100% Volkswagen. The extensive range of Amarok Genuine Accessories provides you with the opportunity to adapt your Amarok even more precisely to your individual needs. From interior to exterior solutions, styling options, Volkswagen Genuine Accessories perfectly compliments your Amarok. For the full range, please visit www.volkswagen.com.au



01 17" Rocadura black edition wheel
Part.no 2H0071497AZ98 (matte black)



02 18" Durban alloy wheel
Part.no 2H6071498Z98 (matte black)



03 17" Rocadura alloy wheel
Part.no 2H0071497AFZZ (gloss machined)



04 Black bodyside moulding
Part.no 2H6071328041



05 Black wheel arch moulding
Part.no 2H6071680041



06 Amarok electronic trailer brake controller kit
Part.no VGA2HETBAMK



07 Roof bars

Part.no VGA071126AM17 (Flush mount, load rating 100Kg)
 Part.no VGA071126AM17C (Commercial, load rating 100Kg)



10 Towbar

Part.no 2H6092134 (3.5 Tonne towbar for Amarok V6 auto only - MY18 onwards)
 Part.no 2H0092134A (3.0 Tonne towbar for Amarok with bumper)
 Part.no 2H0092134B (3.0 Tonne towbar for Amarok without bumper)



11 Amarok platform system

Part.no VGA2H6421AM17 (Load rating 75Kg)



08 Black side steps with integrated LED lighting

Part.no 2H6071691041 (wiring harness also required Part no. 2H6071970)



09 Black styling bar

Part.no 2H0071000ENP1



12 Amarok bonnet protector

Part.no VGA82301M (matte black)
 Part.no VGA823010 (clear)



13 Slimline weathershields (tinted)

Part.no VGA845015S



14 Premium roll Cover

Part.no 2H7071774GNP1
 Part.no 2H7071774ENP1 (Aventura model only)
 Part.no VGACCVW80B02 (Roof racks to suit premium roll cover)
 Part.no VWCCF090B02 (Roof racks to suit Aventura roll cover)



15 Amarok bed divider system

Only in conjunction with the premium roll over
 Not compatible with Aventura/sports bar equipped models
 Part.no VGABDVW80A01



18 Front body underbody styling element (black/silver)

Part.no 2H6071003



19 Amarok self-lowering tailgate system

Part.no VGA2H00ED0800 (with torsion bar)
 Part.no VGA2H00ED0300 (without torsion bar)



16 Premium canopy



17 Amarok alloy tray range



20 Amarok modular tub liner

Part.no VGA2H7061164



21 Tonneau cover range

Part.no VGA2H7071778 (to suit without sports bars)
 Part.no VGA2H7071778A (to suit with highline sports bars)

Seat upholstery



01 Austin cloth seat upholstery in Titanium Black and Moon Rock Grey | CE | CE6 |

02 Salipra cloth seat upholstery in Palladium | SL | HL |

03 Art velour seat upholstery in black | HL |

04 Vienna leather seat upholstery* in Palladium | HL |

05 Nappa leather seat upholstery* in Black with seams in Ceramique | AV |

Wheels



06 Korama alloy wheel, 6.5 J x 16. With 245/70 R 16 tyres. | CE |

07 Posadas alloy wheel, 8.0 J x 17. With 245/65 R 17 tyres. | CE6 |

08 Manaus alloy wheel, 7.5 J x 18. With 255/60 R 18 tyres. | SL |

09 Rawson alloy wheel 7.5 J x 18 with 255/60 R 18 tyres. | HL |

10 Talca alloy wheel, 8.0 J x 20. With 255/50 R 20 tyres. | AV |

*Leather appointed seats have a combination of genuine and artificial leather, but are not wholly leather.

| CE | Core | CE6 | Core V6 | SL | Sportline | HL | Highline | AV | Aventura

Standard Option Optional extra

Paint finishes



01 Candy White Solid | B4B4 | | CE | CE6 | SL | HL | AV |

02 Mojave Beige Metallic | 1B1B | | CE | CE6 | SL | HL |

03 Atlantic Blue Metallic | H7H7 | | CE | CE6 | SL | HL | AV |

04 Indium Grey Metallic | X3X3 | | CE | CE6 | SL | HL | AV |

05 Deep Black Pearl Effect | 2T2T | | CE | CE6 | SL | HL | AV |

06 Pyrit Silver Metallic | K2K2 | | CE | CE6 | SL | HL | AV |

Please note that Metallic and Pearl effect paint are optional at additional cost. The print process does not allow for exact reproduction of the exterior or the upholstery colours. Not all colours are available with optional body coloured bumpers and/or roof height increases. Please contact your Volkswagen Dealer for further information on colours and upholstery combinations.

| CE | Core | CE6 | Core V6 | SL | Sportline | HL | Highline | AV | Aventura

Standard Option Optional extra



5 years Unlimited Kilometre Warranty

At Volkswagen, we pride ourselves on the highest quality standards that come with German engineering.

We back this commitment with a 5 year unlimited kilometre warranty on all new Volkswagen vehicles¹.



1 year Roadside Assist

Every new Volkswagen comes with a 1 year Roadside Assist membership².

That's 24 hour roadside assistance, emergency accommodation, car rental and towing as well as property and other assistance, all included for added peace of mind.



Volkswagen Care Plans

Volkswagen Care Plans³ have you covered for your first 3 or 5 scheduled services, providing you savings off the total Assured Service Pricing RRP. It's convenient, hassle-free scheduled servicing easily available for purchase at your local Volkswagen Dealer.



Assured Service Pricing

Assured Service Pricing⁴ gives you the transparency of knowing how much your service will cost up front.

Our Volkswagen Dealers have access to the latest diagnostic equipment and tools. Plus, they use Volkswagen Genuine Parts[®] to ensure your Volkswagen stays a Volkswagen.

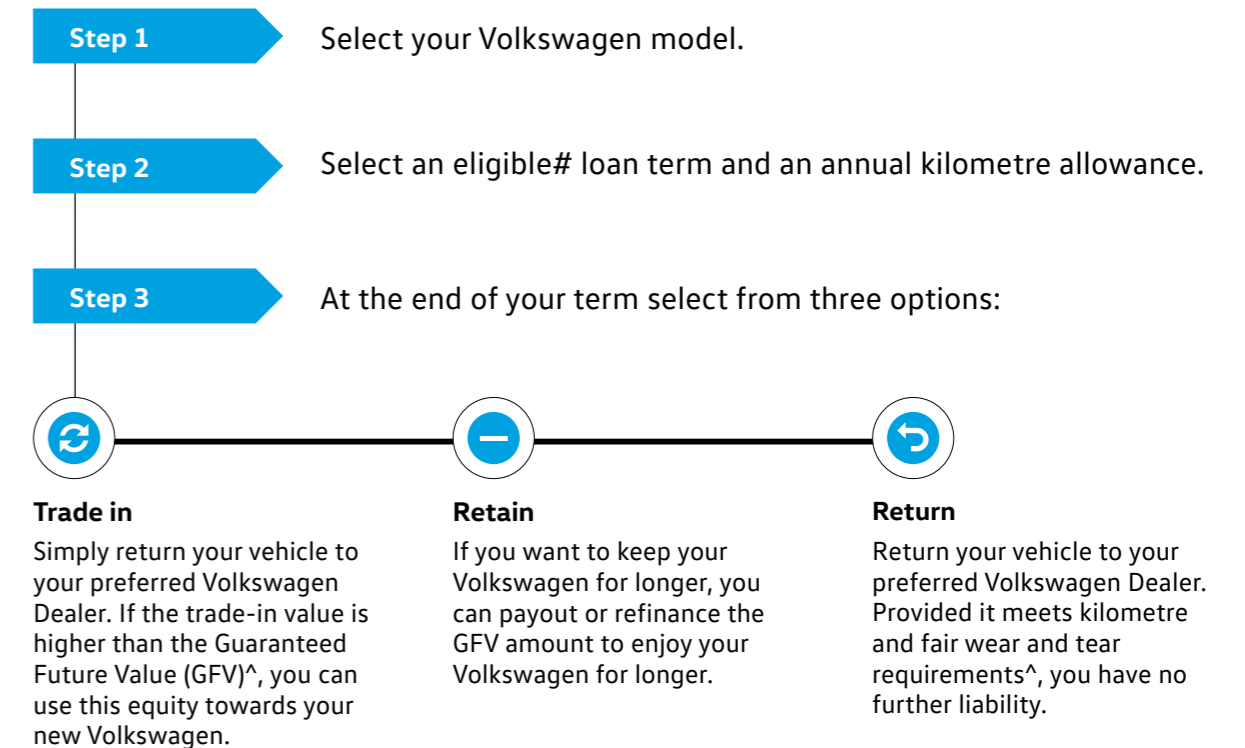
You're in safe hands at your Volkswagen Dealer when it comes to servicing.

Volkswagen Choice[^]

Guarantee the minimum future value of your Volkswagen

Naturally we understand that your Volkswagen represents a valuable investment, so we understand that you want to maintain it in premium condition. Volkswagen Choice[^] is a finance program tailored to the requirements of Volkswagen owners by providing assurance around your Volkswagen's future value[^], whilst offering simple monthly instalment financing options.

Whether you are selecting your new Volkswagen for business or personal use, you can choose the contract term that best suits your requirements. Enjoy the confidence that comes from having locked in a minimum value up front to be attributed to your vehicle at the end of your contract[^]. There are also no account keeping fees with a fixed interest rate.



1. Conditions and exclusions apply, see <https://www.volkswagen.com.au/en/owners-service/warranty.html>. Your rights under this warranty are provided in addition to, and in some cases overlap with, consumer guarantees under the Australian Consumer Law and do not limit or replace them.

2. Volkswagen Roadside Assist membership is provided by AWP Australia Pty Ltd ABN 52 097 227 177 trading as Allianz Global Assistance. Whenever you request roadside vehicle assistance under your membership, you will be making that request to Allianz Global Assistance, who will provide the services under an arrangement with Volkswagen Group Australia Pty Limited ABN 14 093 117 876. The terms and conditions contain exclusions and limitations, please visit <https://www.volkswagen.com.au/en/owners-service/roadside-assist.html>.

3. Volkswagen Care Plans are available for purchase at <https://www.volkswagen.com.au/en/owners-service/care-plans.html> or from participating authorised Volkswagen Dealers for Eligible Vehicles and covers standard items as contained in each scheduled service interval only. The service intervals occur every 15,000 KM/12 months (whichever occurs first) for all models except MY18 to current Crafter vehicles and MY21 onwards Amarok vehicles, which are scheduled to occur every 20,000 km/12 months (whichever occurs first). These Care Plans can only be purchased prior to the first scheduled service and up to 22,500 km/15 months (whichever occurs first) for all models except MY18 to current Crafter vehicles and MY21 onwards Amarok vehicles which is 30,000 km/15 months (whichever occurs first). The timeframe takes effect from when the vehicle is first reported in our system as 'sold'. Discount structure varies by model. For details of what is not included in a scheduled service, please refer to the program terms and conditions.

4. Assured Service Pricing applies to the first 5 standard scheduled services of your vehicle which are scheduled to occur at every 15,000 km/12 month interval (whichever occurs first) or for MY18 to current Crafter vehicles and MY21 onwards Amarok vehicles only, 20,000kms/ 12 month interval (whoever occurs first). Volkswagen will publish the maximum price for a specified Scheduled Service on 1st February each year (or first business day after this date), and pricing will remain fixed for 12 months only. For more details on the Eligible Model's, pricing, items not included and for full terms and condition, please see <https://www.volkswagen.com.au/app/locals/service-pricing-guide>.

[^]Volkswagen Guaranteed Future Value consists of an option to return your vehicle to Volkswagen Financial Services (VFS) ABN 20 097 071 460, Australian Credit Licence 389344, at the end of the term and requires VFS to purchase the vehicle at an agreed price determined by VFS, known as the Guaranteed Future Value (GFV). [#]Eligible loan terms include 12-60 months, vary by model and are subject to change, ask dealer for more information. At the end of the term, you can elect to: (1) trade-in; (2) return; or (3) retain the vehicle by paying the GFV, which is a lump sum owed to VFS at the end of the loan term after all repayments have been made. You will be liable for any loan contract deficit and additional charges if you exceed the nominated kilometre allowance and/or the vehicle is not in an acceptable condition. Available on new and demonstrator Volkswagen vehicles for selected models. Contact your Official Volkswagen Dealer to verify eligible vehicles for this program. Fleet, government, rental buyers, hire car and chauffeur companies excluded.

The Amarok

Volkswagen Group Australia Pty Ltd
24 Muir Road Chullora NSW 2190
ABN 14 093 117 876

Printed in Australia
September 2021
www.volkswagen.com.au

Publication: VWCAMARMY22

Your Volkswagen Dealer.

Important information

Apple CarPlay® is a registered trade mark of Apple Inc. Android Auto™ is a registered trade mark of Google Inc. MirrorLink® is a registered trade mark of Car Connectivity Consortium LLC. Bluetooth® is a registered trade mark of Bluetooth SIG Inc.

Volkswagen distributed by Volkswagen Group Australia Pty Ltd (ABN 14 093 117 876) of 24 Muir Road Chullora, NSW 2190. Specifications are as planned at September 2021, for Model Year 2022 and are subject to change without notice or obligation. All information in this brochure are correct at the time of publication, however variations may occur from time to time and Volkswagen, in so far as it is permitted by law to do so, shall not be liable in any way as a result of any reliance by any person on anything contained in this brochure. Authorised Volkswagen Dealers will provide up-to-date information on model application, design feature, prices, and availability on request.