

THE TURBINE DRIVE BUICK INVICTA... *the most spirited Buick*

1960 BUICK INVICTA 2-DOOR HARDTOP IN MAGIC-MIRROR TITIAN RED



BUICK INVICTA SERIES

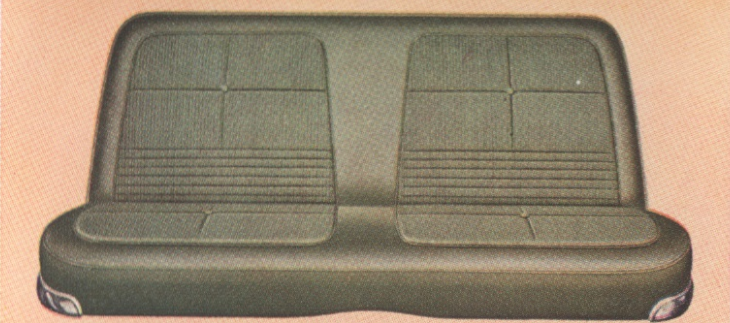
Great from the word "Go!"... the whirlwind performance of the high-spirited, high-styled 1960 Buick INVICTAS.

Take the wheel and feel the way Buick's deep-chested Wildcat 445 V8 engine (standard on Invicta) takes hold in steep hills... digs in for passing or emergency... cruises so beautifully and effortlessly on the straightaway.

Experience the liquid smoothness of Buick's Turbine Drive: acceleration is a swift build-up of power unmarked by the hesitations of gear-shifting you experience with so many automatics.



INVICTA 4-DOOR SEDAN

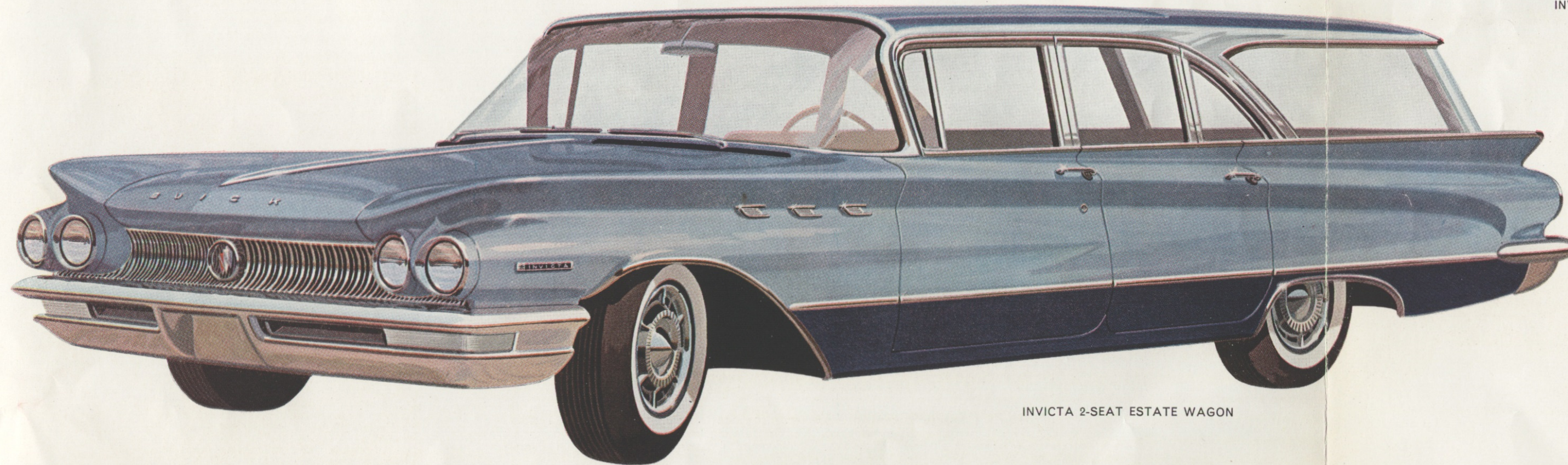


Open the door of an INVICTA and you enter a world of luxurious comfort and styling. The interiors of the 4-door sedan and the 2-door and 4-door hardtops boast the most fashionable Calais Bedford Cords and Cordaveens. Choose from a selection of five harmonious colors.

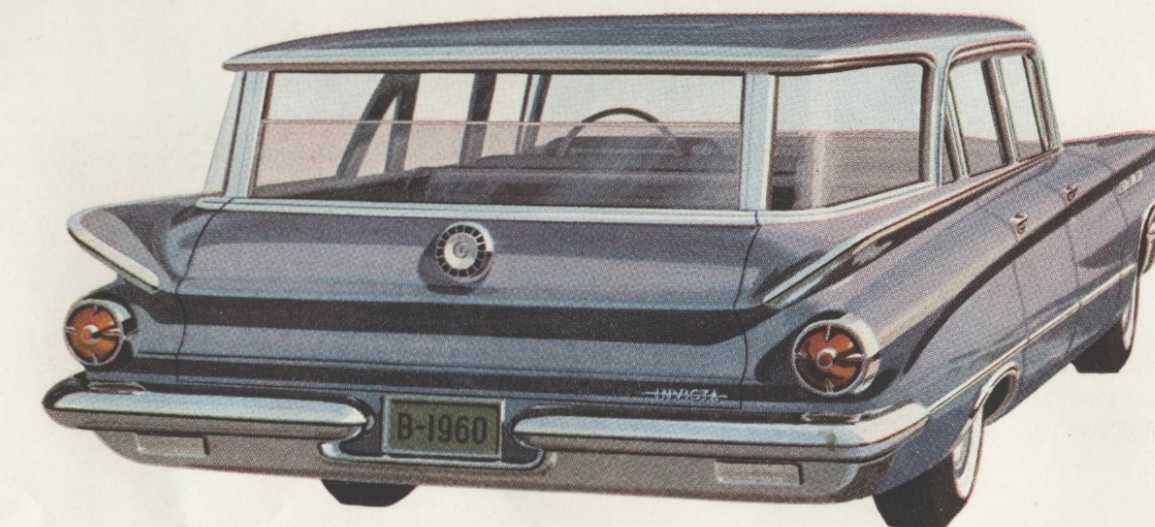
On INVICTA—the most spirited of all Buicks—the famous Wildcat 445 engine is standard equipment. And this year it moves still closer to perfection. Every component has been re-examined; many are of new design.

A new system of engine mountings means smoother operation with less vibration. New finer calibration of carburetor and distributor promotes greater fuel economy. New air and fuel filtration methods make for cleaner, more efficient operation. And a completely new single-muffler exhaust system hushes the Wildcat 445 to a purr.

The Wildcat 445 is a truly great engine, built to satisfy the driver who puts performance near the top of the list of things he requires in an automobile... the driver who has a real appreciation of beautiful machinery.



INVICTA 2-SEAT ESTATE WAGON

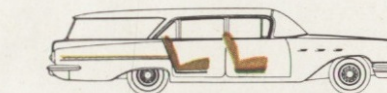


INVICTA 3-SEAT ESTATE WAGON

The gang's all here. With all seats up a 3-seat Estate Wagon will accommodate as many as nine passengers. Optional roof luggage rack provides cargo space.



Family Outing. With third seat down and second seat up six passengers ride in comfort, you still have plenty of easily accessible cargo space.

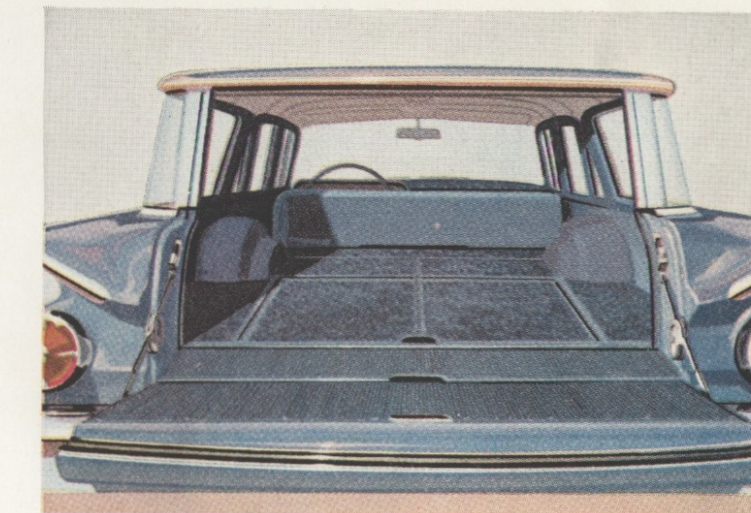


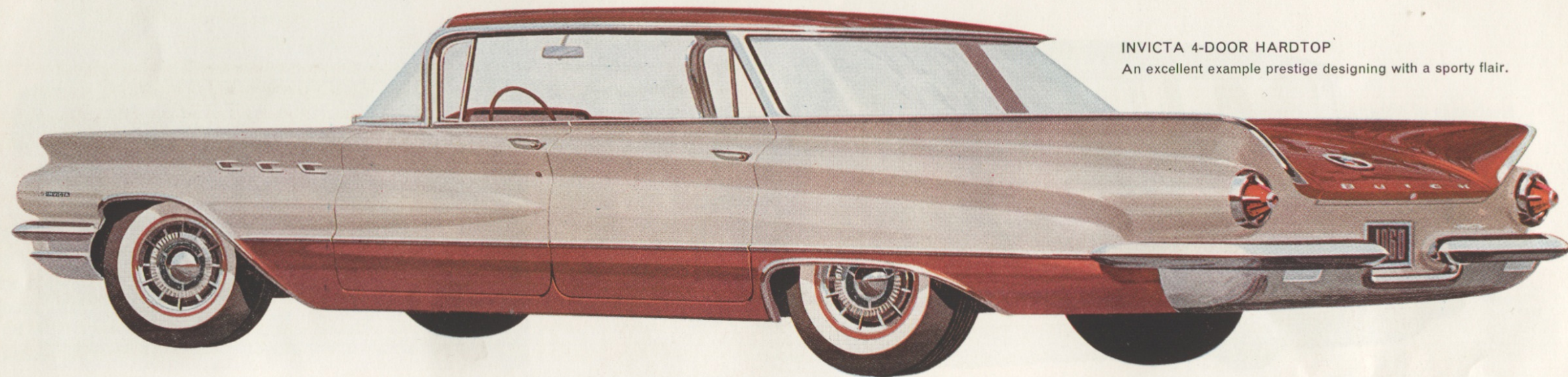
Big Load. With third and second seats folded down, you get a clear load area more than 10 feet long from front seat to the tip of the tailgate.



INVICTA Estate Wagon standard features... Turbine Drive transmission, Foamtex cushions, Electric clock, Deluxe steering wheel, License plate frame, Mirromag instrument panel, Direction signals, Air-flo aluminum brake drums, Full-flow oil filter, Electric windshield wipers, Automatic glove compartment light, Trip-mileage indicator, Cigarette lighter, Dual sliding sunshades, Step-on parking brake, Magic-Mirror finish, Crank-operated front window vents, Safety plate glass in every window, Dual horns, Built-in carburetor de-icer, Single-key locking system, Full 15-inch wheels, Instrument panel safety padding.

INVICTA Estate Wagon interiors have the practicality you need for daytime chores plus the dressy look you like for evening occasions. Styled in six smart color combinations of Cordaveen and woven all-Saran Balmoral cloth. It cleans like Cordaveen, yet breathes like cloth.

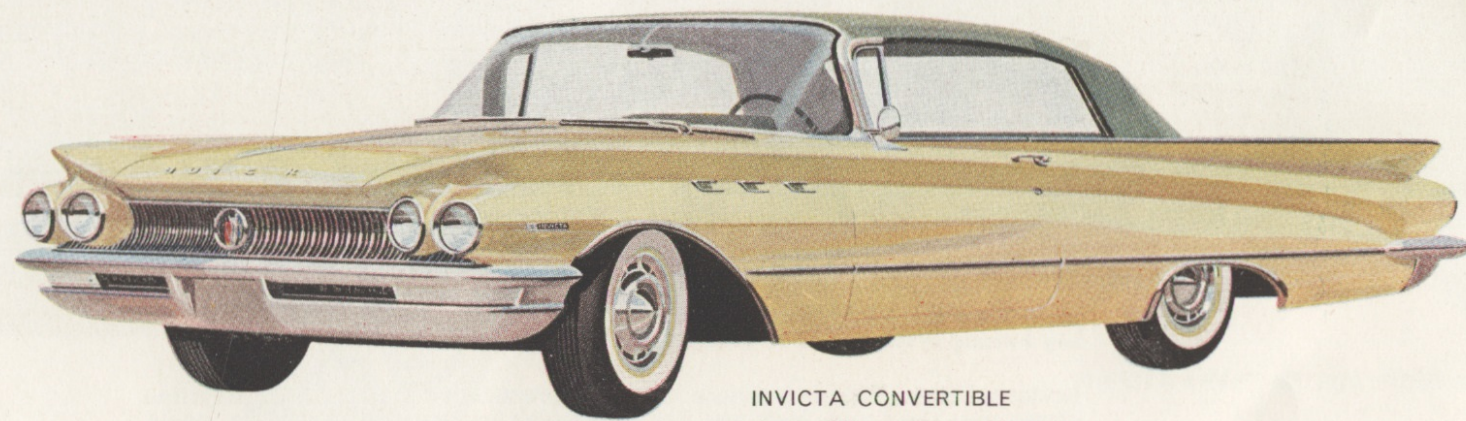




INVICTA 4-DOOR HARDTOP
An excellent example prestige designing with a sporty flair.



Skillfully blended Cordaveens make an exciting interior color combination in this INVICTA convertible, one of six available in the Invicta series. Choice of five top colors.



INVICTA CONVERTIBLE
A graceful expression of luxury.

Know, too that spirit and safety go hand in hand in the Buick INVICTAS. For 1960 Buick's famous Air-flo aluminum brake drums are forced-air cooled to carry off wear-and fade-causing heat. They're standard on INVICTAS as well as all Buicks.

If you're the kind of driver who likes a lot of engine in a lot of car, INVICTA was made to order for you. See the "Road-Proven Engineering" folder in this portfolio for more information about the Invicta's flashing performance.

SPECIFICATIONS

INVICTA

ENGINE

Type.....	90° Buick V8
Displacement, cu. in.....	401
Horsepower.....	325 @ 4400 rpm.
Torque, ft.-lbs.....	445
Compression Ratio.....	10.25 to 1
Transmission.....	Turbine Drive
Carburetor.....	4-Barrel

CHASSIS and GENERAL

Transmission—Turbine Drive, torque converter type. Fully automatic, two turbines, variable-pitch stator and fixed-vane stator. Maximum torque ratio in Drive range at stall, 3.4 to 1. Total oil capacity (refill), 10 quarts.

Suspension—Ball-joint front suspension, coil springs front and rear, true-balance stabilizer, track bar, hydraulic shock absorbers front and rear.

Rear Axle—Buick Torque-Tube, semi-floating rear axle with hypoid gears. Gear ratio: 3.23 to 1.

Brakes—Hydraulic. Air-cooled, finned aluminum brake drums front; air-cooled, finned cast iron brake drums rear. Total lining area 218.03 square inches. Step-on parking brake. Power brakes optional.

Frame—Box-section side rails with "K" type crossmember.

Fuel System—Built-in carburetor de-icer, automatic choke and idling control standard on all models. Two-stage gasoline filtering system includes filter in fuel tank plus

extra-fine filter at the carburetor. New polyurethane air cleaner element provides far more efficient cleaning. 16 $\frac{3}{4}$ -gallon fuel tank.

Exhaust System—Single muffler for both banks of cylinders is mounted crosswise to the frame. Heavy zinc and aluminum coatings of muffler parts promote long life. Dual exhaust optional.

Cooling System—Pressure system. Capacity: with heater 15 $\frac{1}{2}$ quarts.

Steering—Standard recirculating ball-nut type. Ratio 29.3 to 1. Easy Power Steering optional.

Electrical System—12 volt. Delco-Remy system.

Wheels and Tires—Full 15-inch wheels 7.60 x 15, 4-ply Tyrex cord tires standard. Whitewall tires optional.

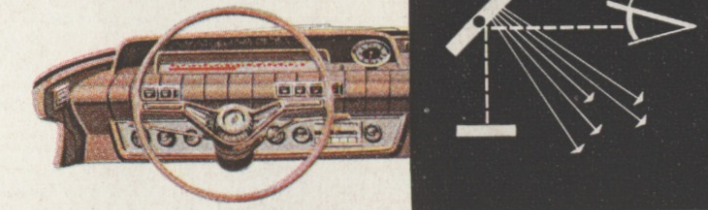
DIMENSIONS

	4-DOOR SEDAN	2-DOOR HARDTOP	4-DOOR HARDTOP	ESTATE WAGONS	CONVERT- IBLE
Over-all Length.....	217.9"	217.9"	217.9"	217.9"	217.9"
Over-all Width.....	80.0"	80.0"	80.0"	80.0"	80.0"
Over-all Height.....	57.2"	54.9"	55.4"	57.2"	55.4"
Wheelbase.....	123.0"	123.0"	123.0"	123.0"	123.0"
Tread, front.....	62.04"	62.04"	62.04"	62.04"	62.04"
Tread, rear.....	60.0"	60.0"	60.0"	60.0"	60.0"
Glass Area (sq. in.).....	5040.7	4880.8	4414.1	5556.8	4002.6*
Head Room, front.....	34.7"	32.3"	32.8"	34.7"	33.1"
Head Room, rear.....	33.9"	33.6"	34.3"	33.9"	34.0"
Head Room, third seat.....	—	—	—	36.7"	—
Shoulder Room, front.....	60.6"	60.6"	60.6"	60.6"	60.6"
Shoulder Room, rear.....	59.0"	59.0"	59.0"	59.0"	51.9"
Shoulder Room, third seat.....	—	—	—	58.5"	—
Hip Room, front.....	65.4"	65.9"	64.4"	65.4"	65.9"
Hip Room, rear.....	65.1"	67.0"	66.0"	65.1"	61.6"
Hip Room, third seat.....	—	—	—	34.6"	—
Leg Room, front.....	44.0"	44.0"	44.0"	44.2"	44.0"
Leg Room, rear.....	42.0"	36.7"	41.0"	42.2"	36.7"
Leg Room, third seat.....	—	—	—	33.2"	—

*Incl. Rear Window

INVICTA STANDARD EQUIPMENT

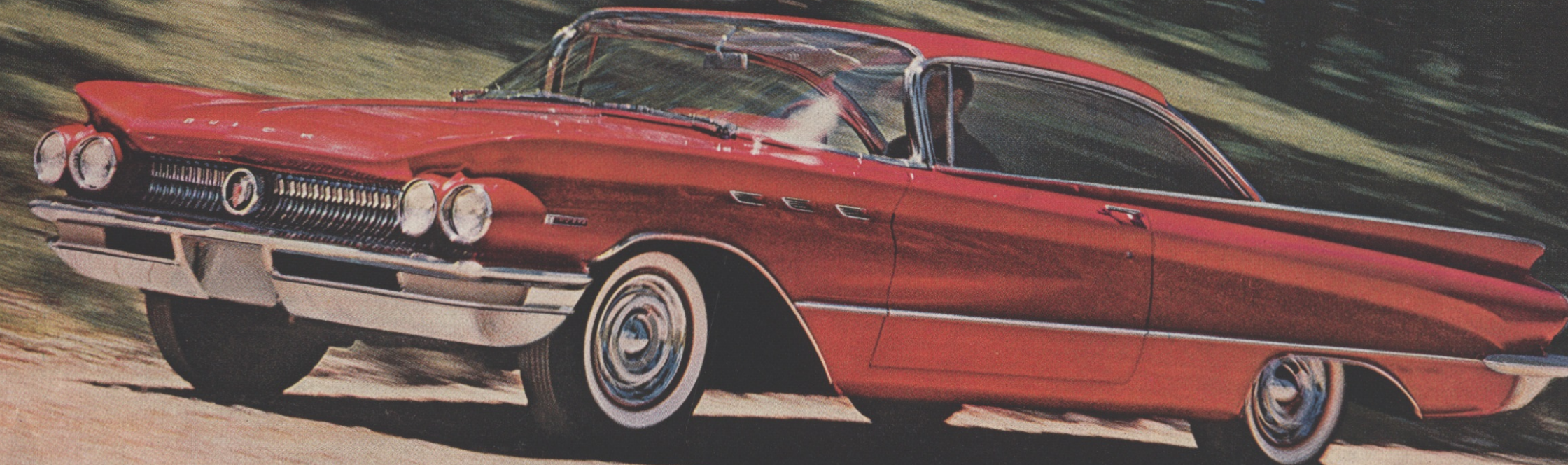
- Turbine Drive Transmission
- Foamtex cushions
- Electric clock
- Automatic trunk light
- Deluxe steering wheel
- Instrument panel padding
- License plate frame
- Deluxe wheel covers
- Mirromagic instrument panel
- Direction signals
- Air-flo aluminum brake drums
- Full-flow oil filter
- Electric windshield wipers
- Automatic glove compartment light
- Trip-mileage indicator
- Cigarette lighter
- Dual sliding sunshades
- Step-on parking brake
- Magic-Mirror finish
- Crank-operated front window vents
- Dual horns
- Built-in carburetor de-icer
- Single-key locking system
- Full 15-inch wheels



The handsome new Buick Mirromagic instrument panel for 1960 offers new glare-free instrument viewing. You look at instruments through an adjustable tilted mirror, at the viewing angle most suitable to you. Eye-straining reflections are directed out of your line of vision. Long reaches for vent and other controls are eliminated. Buick puts every control at your fingertips.

THE TURBINE DRIVE BUICK INVICTA... the most spirited Buick

1960 BUICK INVICTA 2-DOOR HARDTOP IN MAGIC-MIRROR TITIAN RED



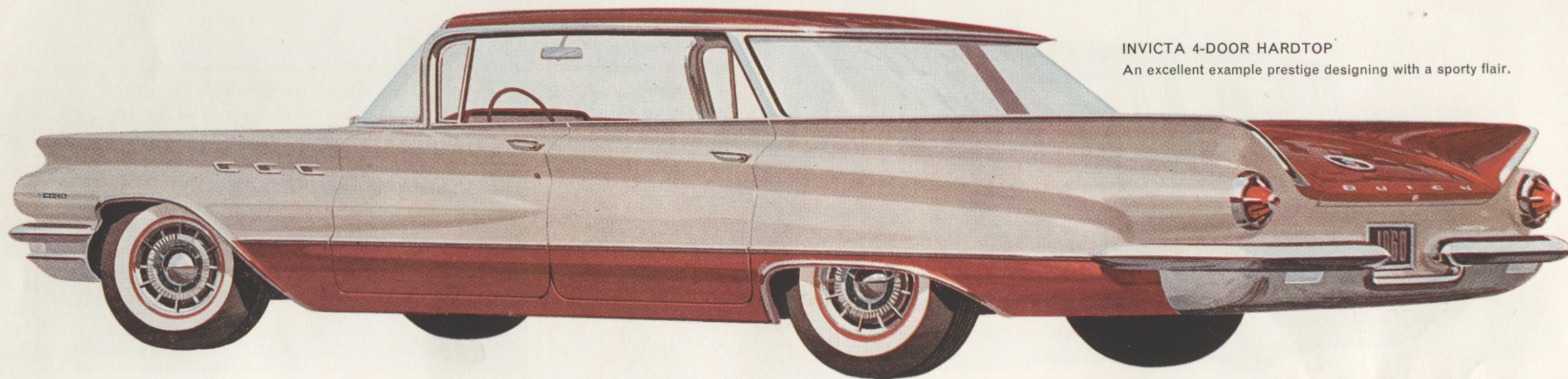
☆For description of options and accessories see "Road-Proven Engineering" folder

WHEN BETTER AUTOMOBILES ARE BUILT, BUICK WILL BUILD THEM

The illustrations in this catalogue do not necessarily show standard colors, materials and equipment. General Motors Products of Canada, Limited, reserves the right to make changes at any time, without notice, in prices, colors, materials, equipment, specifications and models, and also to discontinue models. This right may be exercised without incurring any responsibility with regard to cars previously sold.

GENERAL MOTORS PRODUCTS OF CANADA, LIMITED, OSHAWA, ONTARIO

Printed in Canada 9/59 D-706



INVICTA 4-DOOR HARDTOP

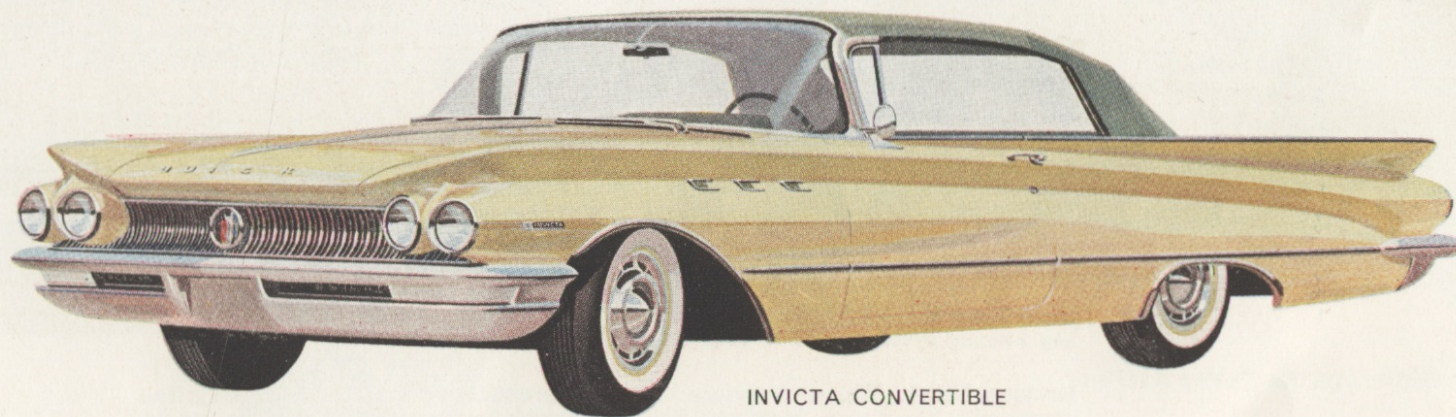
An excellent example prestige designing with a sporty flair.



Skillfully blended Cordaveens make an exciting interior color combination in this INVICTA convertible, one of six available in the Invicta series. Choice of five top colors.

Know, too that spirit and safety go hand in hand in the Buick INVICTAS. For 1960 Buick's famous Air-flo aluminum brake drums are forced-air cooled to carry off wear- and fade-causing heat. They're standard on INVICTAS as well as all Buicks.

If you're the kind of driver who likes a lot of engine in a lot of car, INVICTA was made to order for you. See the "Road-Proven Engineering" folder in this portfolio for more information about the Invicta's flashing performance.



INVICTA CONVERTIBLE

A graceful expression of luxury.

SPECIFICATIONS

INVICTA

ENGINE

Type.....	90° Buick V8
Displacement, cu. in.....	401
Horsepower.....	325 @ 4400 rpm.
Torque, ft.-lbs.....	445
Compression Ratio.....	10.25 to 1
Transmission.....	Turbine Drive
Carburetor.....	4-Barrel

CHASSIS and GENERAL

Transmission—Turbine Drive, torque converter type. Fully automatic, two turbines, variable-pitch stator and fixed-vane stator. Maximum torque ratio in Drive range at stall, 3.4 to 1. Total oil capacity (refill), 10 quarts.

Suspension—Ball-joint front suspension, coil springs front and rear, true-balance stabilizer, track bar, hydraulic shock absorbers front and rear.

Rear Axle—Buick Torque-Tube, semi-floating rear axle with hypoid gears. Gear ratio: 3.23 to 1.

Brakes—Hydraulic. Air-cooled, finned aluminum brake drums front; air-cooled, finned cast iron brake drums rear. Total lining area 218.03 square inches. Step-on parking brake. Power brakes optional.

Frame—Box-section side rails with "K" type crossmember.

Fuel System—Built-in carburetor de-icer, automatic choke and idling control standard on all models. Two-stage gasoline filtering system includes filter in fuel tank plus

extra-fine filter at the carburetor. New polyurethane air cleaner element provides far more efficient cleaning. 16 $\frac{3}{4}$ -gallon fuel tank.

Exhaust System—Single muffler for both banks of cylinders is mounted crosswise to the frame. Heavy zinc and aluminum coatings of muffler parts promote long life. Dual exhaust optional.

Cooling System—Pressure system. Capacity: with heater 15 $\frac{1}{2}$ quarts.

Steering—Standard recirculating ball-nut type. Ratio 29.3 to 1. Easy Power Steering optional.

Electrical System—12 volt. Delco-Remy system.

Wheels and Tires—Full 15-inch wheels 7.60 x 15, 4-ply Tyrex cord tires standard. Whitewall tires optional.

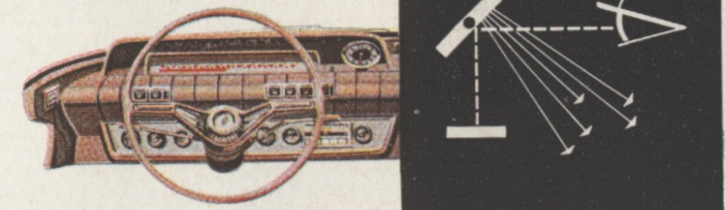
DIMENSIONS

	4-DOOR SEDAN	2-DOOR HARDTOP	4-DOOR HARDTOP	ESTATE WAGONS	CONVERT- IBLE
Over-all Length.....	217.9"	217.9"	217.9"	217.9"	217.9"
Over-all Width.....	80.0"	80.0"	80.0"	80.0"	80.0"
Over-all Height.....	57.2"	54.9"	55.4"	57.2"	55.4"
Wheelbase.....	120.3"	123.0"	123.0"	123.0"	123.0"
Tread, front.....	62.04"	62.04"	62.04"	62.04"	62.04"
Tread, rear.....	60.0"	60.0"	60.0"	60.0"	60.0"
Glass Area (sq. in.).....	5040.7	4880.8	4414.1	5556.8	4002.6*
Head Room, front.....	34.7"	32.3"	32.8"	34.7"	33.1"
Head Room, rear.....	33.9"	33.6"	34.3"	33.9"	34.0"
Head Room, third seat.....	—	—	—	36.7"	—
Shoulder Room, front.....	60.6"	60.6"	60.6"	60.6"	60.6"
Shoulder Room, rear.....	59.0"	59.0"	59.0"	59.0"	51.9"
Shoulder Room, third seat.....	—	—	—	58.5"	—
Hip Room, front.....	65.4"	65.9"	54.4"	65.4"	65.9"
Hip Room, rear.....	65.1"	57.0"	66.0"	65.1"	51.6"
Hip Room, third seat.....	—	—	—	34.6"	—
Leg Room, front.....	44.0"	44.0"	44.0"	44.2"	44.0"
Leg Room, rear.....	42.0"	36.7"	41.0"	42.2"	36.7"
Leg Room, third seat.....	—	—	—	33.2"	—

*Incl. Rear Window

INVICTA STANDARD EQUIPMENT

Turbine Drive Transmission
Foamtex cushions
Electric clock
Automatic trunk light
Deluxe steering wheel
Instrument panel padding
License plate frame
Deluxe wheel covers
Mirromagic instrument panel
Direction signals
Air-flo aluminum brake drums
Full-flow oil filter
Electric windshield wipers
Automatic glove compartment light
Trip-mileage indicator
Cigarette lighter
Dual sliding sunshades
Step-on parking brake
Magic-Mirror finish
Crank-operated front window vents
Dual horns
Built-in carburetor de-icer
Single-key locking system
Full 15-inch wheels



The handsome new Buick Mirromagic instrument panel for 1960 offers new glare-free instrument viewing. You look at instruments through an adjustable tilted mirror, at the viewing angle most suitable to you. Eye-straining reflections are directed out of your line of vision. Long reaches for vent and other controls are eliminated. Buick puts every control at your fingertips.

☆For description of options and accessories see "Road-Proven Engineering" folder

WHEN BETTER AUTOMOBILES ARE BUILT, BUICK WILL BUILD THEM

The illustrations in this catalogue do not necessarily show standard colors, materials and equipment. General Motors Products of Canada, Limited, reserves the right to make changes at any time, without notice, in prices, colors, materials, equipment, specifications and models, and also to discontinue models. This right may be exercised without incurring any responsibility with regard to cars previously sold.

GENERAL MOTORS PRODUCTS OF CANADA, LIMITED, OSHAWA, ONTARIO