

# '77 CONCOURS

by Chevrolet



A thoroughly capable luxury compact.

CHEVROLET



# Concours. It looks luxurious. It works beautifully.

Concours 4-Door Sedan, shown here and on front cover, with available Custom Appearance Group and white stripe tires.



Concours is a very special blending of classic style and good sense.

This elegant compact, finely styled and engineered, is now more luxurious than ever. Beneath those classic lines, though, and underneath that tasteful interior, Concours is all Chevy. All purpose. All value.

There's room for six plus touring-capacity trunk space, meaning 13 cubic feet of luggage room in coupe and sedan and a whopping 28.4 cubic feet in the hatchback (with rear seat folded down).

Three engines and four transmissions ensure a power-train combination well suited to your needs. Of course, Concours' design continues to reflect such traditional Chevy qualities as capable, all-round performance; manageable dimensions inside and out; convenience of service.

Styling changes this year are subtle

rather than extreme. A restyled grille, hood moulding; front and rear lamps and fender end caps lend a crispness to

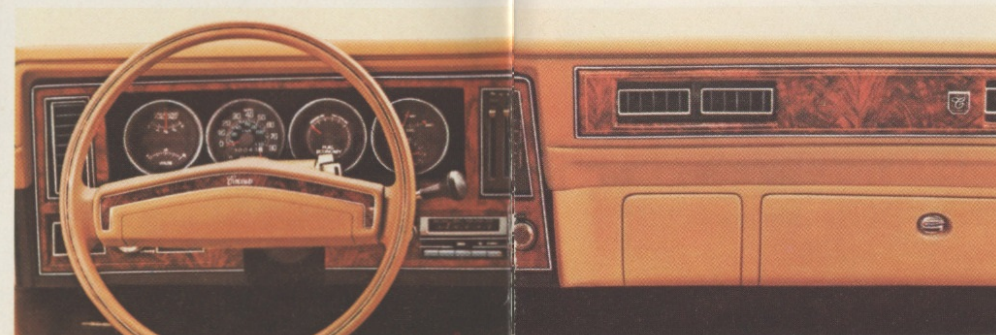


Concours' flowing lines.

All three models include newly designed full wheel covers, bright metal mouldings, a stylish, safety hood orna-

ment and distinctive identification. For 1977, nine of the 14 available colours and three of the seven vinyl roof colour choices are new.

Inside, durable and distinctive new materials are now fitted in one of the domestic compact field's rich interiors. A new instrument panel cluster,



and steering wheel significantly refine an already functional interior. There's a new available Special Instrumentation package, relocated to the dash for excellent visibility. It includes tachometer, voltmeter, temperature gauge and clock. Also for your convenience, an available intermittent windshield wiper

system can now be adjusted for desired timing of the wiper action.

Because this is Concours, special sound insulation and plush colour-keyed, cut-pile carpeting add to the feel of quiet and quality so prevalent throughout. The standard bench front seat is even fitted with a fold-down centre armrest.

But Concours is more than a luxury interior package. Concours is an attitude about driving.

Concours says ever so subtly that getting there can be satisfying. Fun. Without being ostentatious, or paying more than you need to.

Yes, Concours is a thoroughly luxurious compact. It looks right. It feels right. We think you'll become just as enthusiastic about how it acts. So we'd like to discuss Concours' performance for you on the following pages.



Many Options and Custom Features are available for Concours. Some are illustrated or described in this catalogue.



# Concours gets the job done. Anywhere.

The '77 Concours is not only a luxury compact but a thoroughly capable road car. We say this because it utilizes engineering elements that help make it responsive, satisfying and fun to drive.



Chevrolet engineers involved in Concours' development concentrated on making the car compatible in varied situations it was likely to encounter over a long period of ownership in this country.



Concours Coupe. Shown with available white stripe tires, Rally wheels, Cabriolet vinyl roof and body side mouldings.

For example, Concours' standard engineering features include front disc and finned rear drum brakes for sure stops. A High Energy Ignition system delivers to the plugs a spark that is up to 85% hotter than with conventional systems, for responsive ignition performance. There's a coolant recovery system to help prevent costly coolant loss. And for the handling characteristics they provide, steel-belted tires are standard.

Next, Concours' engine transmission power teams offer a range of available choices. There are three engines: the standard 250-cubic-inch 6-cylinder with one-barrel carburetor; the available 305-cubic-inch V8 with two-barrel carburetor; and the available 350-cubic-inch four-barrel V8.

Four transmissions complement engine selection: a standard 3-Speed manual transmission, available floor-shift 3-Speed, available 4-Speed and the



popular Turbo Hydra-matic. Available drive train equipment also includes a performance axle ratio and Positraction rear axle. (You'll find a complete power team chart on the back cover.)

Other engineering items that you can order from the extensive Concours' option list include a heavy-duty front and rear suspension—or Chevy's appealing F41 sport suspension, with special features for crisp driving characteristics.

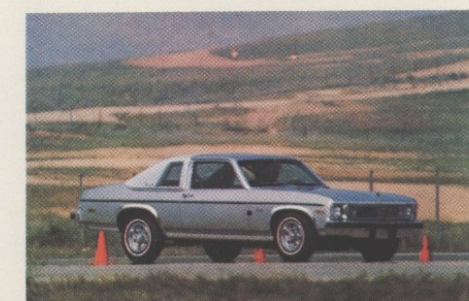
By now, you're getting the idea of Concours' dual personality. It was designed to be comfortable, luxurious, elegant, yet responsive. It's good to look at in a way that is conservative and lasting. All that's standard.

But the lines of the body were not developed exclusively for styling purposes. They're also functional.

The sloping hood styling offers good aerodynamics for highway driving. There's good wheel clearance under

those fenders for turning situations. The large window area offers a wide sweep of vision in all quarters.

Inside, standard items like moulded full foam seat construction and available



Comfortilt steering wheel can combine to surround a driver with the sort of atmosphere that makes for relaxed, long-trip pleasure. Available wide-back bucket seats enhance the enjoyable driving comfort that comes with Concours.

The supreme test of any car's

capability is, of course, in its performance. And here's where Concours comes into its own. This is one fine road car. It's also a reliable car because Concours is constructed of proven engineering



components—things like solid rear axles, front engine rear drive configuration. There are no engineering experiments here and, therefore, Concours' behaviour on the road is predictably familiar and right to most North American drivers.



# A thoroughly capable luxury compact. Make it your own

Concours Sedan interior with available knit cloth-and-vinyl upholstery.



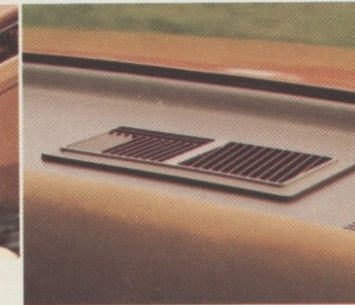
Comfortilt steering wheel.



Cruise-Master speed control.



Rear window defogger.



Power windows.



Even though Concours has a full complement of standard features, you may wish to personalize it with additional features from the wide selection listed here. Availability often depends on the model and other equipment selected. Your Chevrolet salesman can answer any questions.

## Comfort and convenience options.

- Choice of three knit cloth-and-vinyl interior trims: black, buckskin or firethorn.
- Wide-back front bucket seats. Driver's seat-back has 2-position adjustment; passenger seat has reclining back. Includes colour-keyed console when available Turbo Hydra-matic transmission is ordered.
- Power steering.
- Power brakes. Required on V8-equipped models.
- Power door lock system.
- Power windows.
- Four-Season air conditioning.
- Swing-out rear side windows. Not available on sedan, or on coupe with Cabriolet roof.
- Cruise-Master speed control. Automatically maintains the speed selected by driver. Stepping on brake disengages control. Available Turbo Hydra-matic transmission required.
- Econominder Gauge Package. Fuel economy gauge indicates when car is being driven in the most economical range. Includes voltmeter and temperature gauge.
- Special Instrumentation. Includes tachometer, voltmeter, temperature gauge and electric clock.
- Electric clock.
- Auxiliary lighting. Includes ashtray, courtesy luggage compartment and underhood lights, and headlight reminder buzzer.
- Rear window defogger.
- Tinted glass.

- Comfortilt steering wheel. Adjusts to six different positions.
- Dual horns.
- Remote-control outside mirror for left front door.
- Twin sport mirrors that match car's exterior colour. Left front door mirror is remote-control.
- Visor vanity mirror.
- Trailering mirrors.
- Radios and tape players are Delco-GM manufactured according to Chevrolet quality standards. Make sure the radio equipment in your Concours carries the "Delco-GM" trademark. Select from: AM radio, AM/FM radio, AM/FM stereo radio, stereo tape system with either the AM or AM/FM stereo radio. All stereo systems include an auxiliary speaker.
- Rear seat speaker.
- Space-saving Stowaway spare. Standard on hatchback.

## Appearance options.

- Custom Appearance Group. Includes deluxe body side moulding with colour-keyed vinyl insert and wide, bright moulding on lower edge of fenders.
- Two-tone exterior finish.
- Deluxe colour-keyed seat and shoulder belts.
- Colour-keyed floor mats.
- Soft padded vinyl roof cover.
- Deluxe body side moulding with colour-keyed vinyl insert.
- Door edge guards.
- White stripe or white lettered tires.
- Rally wheels. Colour-keyed to match car's exterior colour.

## Mechanical options.

- Turbo Hydra-matic transmission.
- Fully synchronized 4-Speed manual transmission. For available 350-4 V8 engine only.

- 3-Speed manual floor shift transmission.
- Positraction. For added rear wheel traction.
- Performance ratio rear axle.
- Intermittent windshield wiper system. Ideal when continued wiper operation is not required. Includes new mist control position and intermittent wiper memory setting that will vary the wiper cycle from 1/2 to 20 seconds.
- Heavy-duty suspension, front and rear. Particularly useful for trailering.
- F41 sport suspension for tight, firm driving feel. V8-equipped models only. Includes 14" x 7" wheels, larger diameter front stabilizer, added rear stabilizer, special front springs and shock absorbers.
- Class I (up to 2000 lbs.) load-distributing, platform-type trailer hitch. Also, trailer wiring harness.
- Heavy-duty battery.
- Heavy-duty radiator.

## Dimensions (in inches), outside and in.

	2-Door Coupe	2-Door Hatch-back	4-Door Sedan
Overall length	197.7	197.7	197.7
Overall width	72.2	72.2	72.2
Wheelbase	111.0	111.0	111.0
Tread, front	61.3	61.3	61.3
rear	59.0	59.0	59.0
Loaded height	53.6	53.6	53.6
Head room, front	38.2	38.2	39.1
rear	36.7	36.7	37.1
Leg room, front	41.7	41.7	41.7
rear	32.4	32.4	35.2
Shoulder room, front	56.6	56.6	56.6
rear	55.3	55.3	56.7
Hip room, front	53.3	53.3	53.3
rear	52.8	52.8	53.6
Usable luggage space	13.4	29.2	13.0
Rated fuel tank capacity	cu. ft. 17.5 gals.	cu. ft.* 17.5 gals.	cu. ft. 17.5 gals.

\*Rear seat folded.



Rally wheels.



Power door lock system.



Remote-control outside mirror.



Econominder Gauge Package.





Concoors Coupe, shown with available white stripe tires, Cabriolet vinyl roof and sport mirrors.

## Standard features for your comfort, convenience, security.

As we said at the beginning, the 1977 Concoors is one of those cars that looks luxurious, works beautifully. It's equipped with the kind of quality standard features that make this elegant car a pleasure to own and drive.

### Exterior/interior equipment.

- Concoors Cabriolet Coupe (shown above). Features deluxe Landau-style vinyl roof in choice of colours, distinctive opera windows and bright mouldings.
- Upright 3-dimensional crest on hood.
- Wide wheel opening moulding. Bright finish.
- Deluxe bumpers with black impact strips. Include bumper guards, front and rear.
- Full wheel covers.
- Luxurious interior. Front seat has fold-down centre armrest. Wood-grain vinyl accents on steering wheel and instrument panel.
- Special sound insulation.
- Front doors have map pocket, wood-grain vinyl accents and carpeted lower panel.
- Choice of three all-vinyl interiors: buckskin, firethorn or white.
- Cut-pile carpeting. Also, load-floor carpeting on hatchback.
- Full foam seats, front and rear.
- Acoustical headlining. New one-piece design features thick, soft, sound-deadening lining.
- Luggage compartment mat.
- Left- and right-front door dome light switch.
- Glove compartment light and lock.
- Cigarette lighter.
- Day-night inside rearview mirror.
- Computer-selected independent front coil springs and rear multi-leaf springs.
- Stowaway spare tire on hatchback.
- Steel-belted radial ply tires.
- Flow-through ventilation system.
- Built-in heater and defroster system.
- Exterior colour choices: aqua metallic, dark blue metallic, light blue metallic, medium green metallic, light buckskin, buckskin metallic, brown metallic, orange metallic, silver, firethorn metallic, bright yellow, antique white, light red, black.
- Protective inner fenders, front and rear.
- Double-panel door, hood, roof and deck lid construction.
- Self-cleaning rocker panels help prevent rust.
- Front disc/rear drum brake system. Disc brakes have audible wear sensors.

### Power teams.

Engine	250-1 barrel Six	305-2 barrel V8	350-4 barrel V8
Power Rating†	110	145	170
Engine Usage	Standard	Avail.	Avail.
3 Speed Manual Standard*	2.73 Standard 3.08 Avail.	2.73	NA
4 Speed Manual Available	NA	NA	3.08
Turbo Hydra-matic Available	2.73 Standard 3.08 Avail.	2.56	2.56 Standard 3.08 Avail.

\*3 Speed Manual Floor Shift Transmission available.  
†SAE net as installed rating. NA—Not available.

### Under the hood.

- **High Energy Ignition**—up to 85% hotter spark to the plugs than with conventional breaker points and condenser system; **Catalytic Converter**—takes over most of the emissions control so engines can be tuned for smooth, responsive performance.
- Long mileage or time intervals between recommended service help save you time and money. For example: spark plugs—22,500 miles; engine oil—12 months or 7500 miles (under normal driving conditions); oil filter—first 7500 miles, then every 15,000 miles (or every 12 months if time is the determining factor); chassis lubrication—12 months or 7500 miles; transmission fluid and filter change (under normal driv-

ing conditions)—60,000 miles. Check complete details in the Owner's Manual.

- Sealed side-terminal energizer-type battery helps prevent corrosion buildup on the terminals.
- Delcotron generator with built-in solid-state regulator.
- Coolant recovery system.

### For safety and security.

#### Occupant protection.

- Seat belts with pushbutton buckles for all passenger positions.
- Two combination seat and inertia reel shoulder belts for driver and right front passenger (with reminder light and buzzer).
- Energy-absorbing steering column.
- Safety steering wheel.
- Passenger-guard door locks.
- Safety door latches and hinges.
- Folding seat back latches.
- Energy-absorbing padded instrument panel.
- Contoured windshield header.
- Thick-laminate windshield.
- Safety armrests.

#### Accident prevention.

- Side marker lights and reflectors.
  - Parking lights that illuminate with headlights.
  - Four-way hazard warning flasher.
  - Lane-change feature in direction signal control.
  - Back up lights.
  - Windshield defroster, washers and dual-speed wipers.
  - Wide-view inside mirror (vinyl-edged, shatter-resistant glass and deflecting support).
  - Outside rearview mirror.
  - Dual master cylinder brake system with warning light.
  - Starter safety switch.
  - Dual-action safety hood latch.
- Anti-theft.
- Ignition key reminder buzzer.
  - Steering column lock.



The illustrations or descriptions in this catalogue do not necessarily show standard colours, materials and equipment. General Motors of Canada Limited reserves the right to make changes at any time without notice, in prices, colours, materials, equipment, specifications and models, and also to discontinue models. This right may be exercised without incurring any responsibility with regard to cars and trucks previously sold.

GENERAL MOTORS OF CANADA LIMITED  
OSHAWA, ONTARIO

September 1976

Printed in Canada

