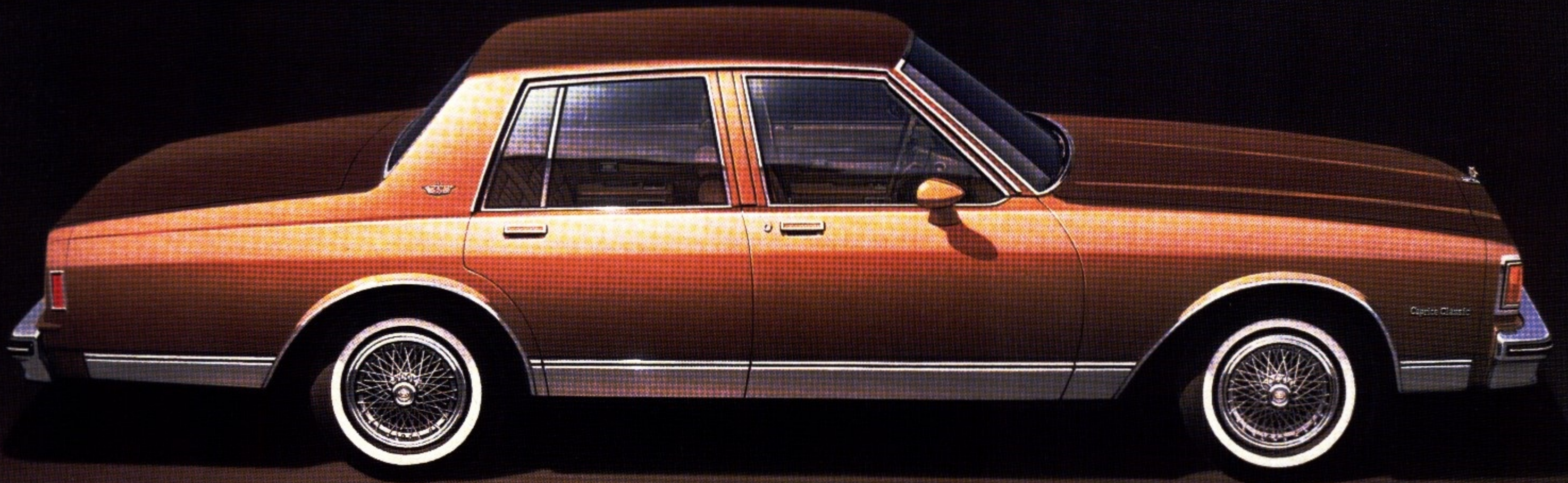


# 1982 CAPRICE CLASSIC & IMPALA

*Chevy makes good things happen for you.*



Caprice Classic 4-Door Sedan.

**Chevrolet**



# 1982 CAPRICE / IMPALA

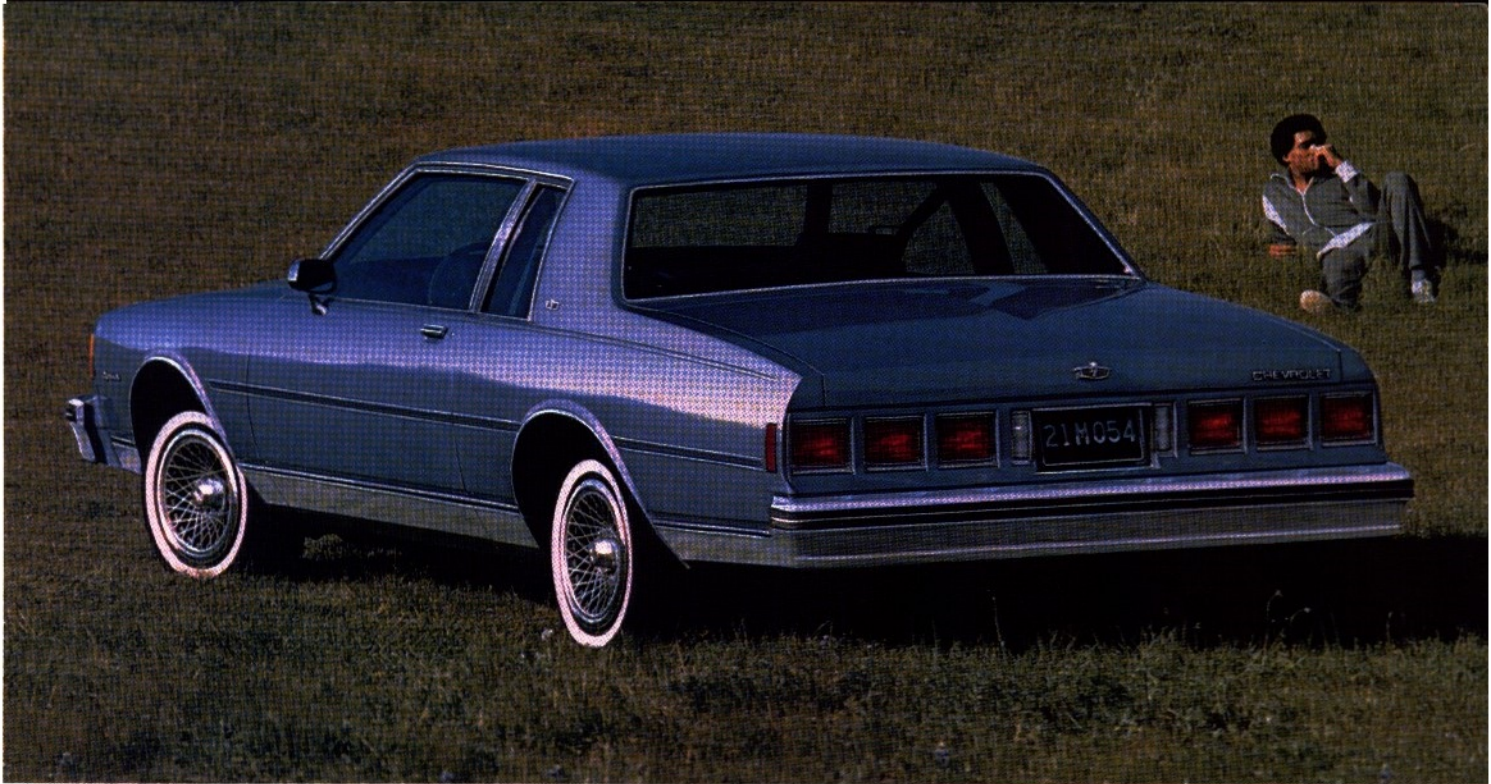
When you consider everything, you won't consider anything else.

That's why we ask you to put the 1982 Caprice Classic or Impala to the test. And when you do, remember to note all the things you consider important in a new car.

For example, room. Notice the full foam-cushioned comfort for six. The thick one-piece carpeting and cloth-and-polyfoam headliner to help make the interior inviting and quiet.

Slip behind the wheel for a drive. Automatic transmission, power steering and power front disc brakes are standard. Computer-selected coil springs, cushion body mounts, and a range of acoustical materials help to reduce road noise and vibrations.

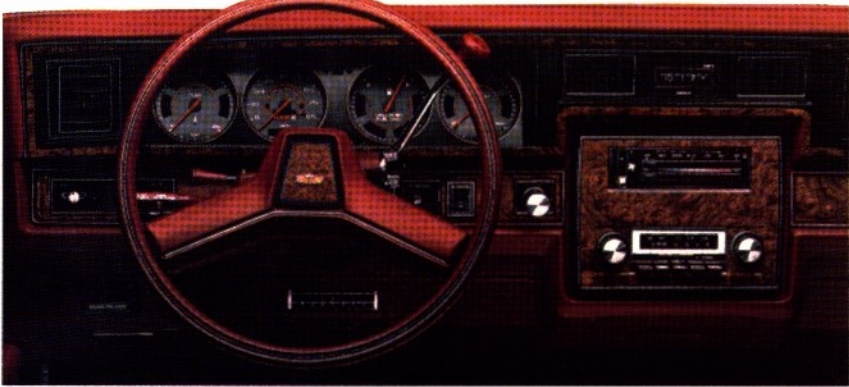
Caprice and Impala. Solid value. Comfort. And ride. The feel of a fine car. After all that's what you expect from Chevrolet.



Caprice Classic 2-Door Sport Coupe.



Caprice Classic Sedan interior with standard bench seat.



Caprice Classic Instrument Panel shown with many optional features including air conditioning, AM/FM stereo radio and Automatic Speed Control.



Caprice Classic Special Custom Interior available at extra cost.



Impala interior with standard bench seat.



Impala 4-Door Sedan.



Caprice Estate 3-Seat Station Wagon.



Impala 2-Seat Station Wagon.

## 1982 Chevrolet Model Availability

Caprice Classic: 2-Door Sport Coupe. 4-Door Sedan  
Caprice Estate: 4-Door Station Wagon (3-Seat)

Impala: 4-Door Sedan,  
4-Door Station Wagon (2-Seat).  
4-Door Station Wagon (3-Seat)

### Exterior Dimensions: Millimetres (Inches)

	COUPE	SEDAN	WAGON
Wheelbase	2945 (116.0)	2945 (116.0)	2945 (116.0)
Length (overall)	5386 (212.1)	5386 (212.1)	5463 (214.7)
Width (overall)	1913 (75.3)	1913 (75.3)	2014 (79.3)
Height	1387 (54.6)	1402 (55.2)	1450 (57.1)
Tread-Front	1568 (61.8)	1568 (61.8)	1578 (62.2)
Tread-Rear	1542 (60.8)	1542 (60.8)	1628 (64.1)
Fuel Tank Capacity: Litres (gals.)	95 (20.8)	95 (20.8)	83.2 (18.3)

### Interior Dimensions: Millimetres (Inches)

	COUPE	SEDAN	WAGON
Head Room-Front	985 (38.8)	1003 (39.5)	1007 (39.6)
Head Room-Rear	970 (38.2)	970 (38.2)	999 (39.3)
Leg Room-Front	1072 (42.2)	1072 (42.2)	1072 (42.2)
Leg Room-Rear	972 (38.3)	993 (39.1)	959 (37.8)
Hip Room-Front	1398 (55.0)	1398 (55.0)	1399 (55.1)
Hip Room-Rear	1472 (57.9)	1405 (55.3)	1398 (55.0)
Shoulder Room-Front	1534 (60.4)	1537 (60.5)	1537 (60.5)
Shoulder Room-Rear	1504 (59.2)	1537 (60.5)	1537 (60.5)
Usable Trunk Space: Litres (cu. ft.)	592 (20.9)	592 (20.9)	-

NOTE: Speedometers in Canada have major scale in km/h, secondary in MPH and odometer in kilometres.

## Wagon Cargo Compartment: Millimetres (Inches)

Load Floor Length Behind Front Seat	2290 (90.2)
Load Floor Width Between Wheelhouses	1224 (48.2)
Rear Entrance Opening:	
Height	729 (28.8)
Width at Belt	1224 (87.2)
Total Cargo Volume: Litres (cu. ft.)	2489 (87.2)

## Chevrolet Power Teams

Engine	Ordering Code	Displacement (cubic inches)	Engine Availability		Transmission Availability		Computer Command Control System Option NB1
			Sedans and Coupes	Station Wagons	Automatic Transmission	Automatic Transmission with Overdrive*	
3.8 Litre 2-Bbl. V6 (A)	LD5	231	Std.	N/A	Std.	N/A	N/A
4.4 Litre 2-Bbl. V8 (B)	L39	267	EC	Std.	Std.	EC	EC
5.0 Litre 4-Bbl. V8 (B)	LG4	305	EC	EC	Std.	EC	EC
5.7 Litre Diesel V8 (C)	LF9	350	EC	EC	Std.	N/A	N/A

Std. - Standard N/A - Not Available EC - Optional at Extra Cost

\*Optional Computer Command Control System must be ordered

(A) Produced by GM - Buick Motor Division, U.S.A.

(B) Produced by GM - Chevrolet Motor Division, U.S.A. and GM of Canada

(C) Produced by GM - Oldsmobile Motor Division, U.S.A.

Caution: Use of leaded fuel will cause the Computer Command Control System to malfunction.

See your Chevrolet salesperson for Transport Canada approved fuel consumption estimates for all Chevrolet models.

## A WORD ABOUT ENGINES

Chevrolets are equipped with GM-built engines produced by various divisions of General Motors Corporation and GM of Canada. Please refer to the Chevrolet Power Team Chart above or see your dealer for details.



## Caprice/Impala Major Standard Equipment

	Caprice Classic Coupe/Sedan	Caprice Classic Wagon	Impala Sedan	Impala Wagon
<b>EXTERIOR</b>				
Bright windshield reveal moulding	S	S	S	S
Quad rectangular headlamps	S	S	S	S
Chrome-plated grille	S	S	NA	NA
Argent grille	NA	NA	S	S
Chrome-plated headlamp bezels	S	S	S	S
Bright wide body sill mouldings	S	S	NA	NA
Bright roof drip moulding	S	S	S	S
Stand-up hood ornament	S	S	S	S
Full wheel covers	S	S	EC	EC
Wheel opening mouldings	S	S	EC	EC
Bright rear window reveal moulding	S	S	S	S
Bright window frame mouldings	S	NA	S	NA
Bright tail lamp trim	S	NA	S	NA
Triple-unit tail lamps	S	NA	S	NA
<b>INTERIOR</b>				
Full-width front seat with armrest	S*	S	NA	NA
Padded upper, moulded lower door panels with padded armrests	S	S	S	S
Carpeted lower door panels	S	S	NA	NA
Vinyl door pull straps	S	S	NA	NA
Day/night rearview mirror	S	S	S	S
Centre dome light	S	S	S	S
Colour-keyed steering wheel, column, and instrument panel	S	S	S	S
Colour-keyed seat and shoulder belts	S	S	S	S
Electric rear window defroster	S	S	S	S
Instrument panel courtesy,** ashtray,** and glove compartment lights	S	S	S	S
Headlamp-on warning signal	S	S	EC	EC
Dual horns	S	S	NA	NA
Cigarette lighter	S	S	S	S
One-piece cloth headlining over thick foam-padding	S	S	S	S
Full-width front seat	—	—	S	S
Colour-keyed one-piece carpeting	S	S	S	S
Luggage compartment mat	S	NA	S	NA
Power tailgate window	NA	S	NA	S
Lockable side compartment	NA	S	NA	S
Hinged panel in cargo floor over spare tire and concealed stowage	NA	S	NA	S

S—Standard EC—Optional at Extra Cost NA—Not Available \*Except Coupe \*\*Except Impala

	Caprice Classic Coupe/Sedan	Caprice Classic Wagon	Impala Sedan	Impala Wagon
<b>INTERIOR</b>				
Recessed stowage pockets in cargo area trim panels	NA	S	NA	S
<b>CHASSIS/MECHANICAL</b>				
Power steering	S	S	S	S
Power disc/rear drum brake system	S	S	S	S
Vented front disc brake rotors and finned rear brake drums	S	S	S	S
Disc brake audible wear sensors	S	S	S	S
P205/75R-15 steel-belted radial ply tires on 6" wheels	S	NA	S	NA
P225/75R-15 steel-belted radial ply tires on 7" wheels	NA	S	NA	S
Coolant recovery system	S	S	S	S
Inside hood release	S	S	S	S
Concealed dual-speed electric windshield wipers	S	S	S	S
Dual-mode flow-thru ventilation	S	S	S	S
Delco Freedom II battery with sealed side terminals	S	S	S	S
Delcotron generator with built-in solid-state regulator	S	S	S	S
Front stabilizer bar	S	S	S	S
Full Coil suspension system	S	S	S	S
High Energy Ignition system	S	S	S	S
Visible ball joint wear indicators on front suspension lower control arms	S	S	S	S
Double panel door, hood and deck lid or wagon tailgate	S	S	S	S
Counterbalanced hood, deck lid or tailgate	S	S	S	S
Bolt-on front-end sheet metal cushion-mounted to frame and radiator support assembly	S	S	S	S
Full perimeter frame	S	S	S	S
Sixteen-cushion body mounting	S	S	S	S
Steel bumpers with high-strength reinforcements	S	S	S	S
Front and rear inner fenders	S	S	S	S
Long recommended service intervals for oil change, oil filter, spark plugs, chassis lubrication and automatic transmission fluid	S	S	S	S

## Options

Listed below are some of the available equipment choices to help you customize your 1982 Chevrolet. For other optional equipment and their model availability, see your Chevrolet dealer.

• Air Conditioning • Heavy-Duty Battery • Roof Carrier • Digital or Quartz Electric Clocks • Gauge Packages • Tinted Glass • Power Door Lock System • Power Windows • Halogen Hi-Beam Headlamps • Cornering Lights • Quiet Sound Group • Body Side Mouldings • Power Tailgate Lock • Automatic Transmission with Overdrive • GM Delco Radios: AM, AM/FM, AM/FM Stereo • Power Antenna • Vinyl Roof Cover • Automatic Speed Control • Power Trunk Opener • Full Wheel Covers • Sport Wheel Covers • Wire Wheel Covers • Intermittent Windshield Wiper System

## Exterior Colours

Choose from 12 high-luster acrylic finishes or several available Two-Tone combinations. Colours: White, Silver Metallic, Light Blue Metallic, Dark Blue Metallic, Light Jade Metallic, Dark Jade Metallic, Beige, Light Brown Metallic, Light Redwood Metallic, Redwood Metallic, Silver Gray, Charcoal Metallic.

## Interiors

Both Impala and Caprice Classic are available in cloth or vinyl. Depending on exterior colour and trim material selected, six interior colour choices are offered; Beige, Dark Blue, Camel, Silver Gray, Jade, and Redwood.

## Safety Features

### OCCUPANT PROTECTION

Manual lap/shoulder belts with push-button buckles for driver and right front passenger (driver side includes visual & audible warning system) • Manual lap belts with push-button buckles for rear passenger positions also centre front (where applicable) • Energy-absorbing steering column • Passenger guard door locks • Safety door latches and stamped steel hinges • Folding seat back latches • Energy-absorbing padded instrument panel and front seat back tops • Laminated windshield/tempered side and rear glass • Safety armrests • Identification symbols for controls and displays.

### ACCIDENT AVOIDANCE

Side marker lights and reflectors • Parking lamps that illuminate with headlamps • Four-way hazard warning flasher • Backup lights • Lane change feature in direction signal control • Windshield defrosters, washer and dual-speed wipers • Vinyl-edged inside mirror • Outside rearview mirror • Dual master cylinder brake system with warning light • Starter safety switch • Dual-action safety hood latches.

### ANTI-THEFT

Audible anti-theft ignition key reminder • Anti-theft steering column lock • Inside hood release.

## A word about assembly, components and optional equipment in these vehicles.

The vehicles described in this brochure are assembled at various Divisions of General Motors Corporation. These vehicles incorporate thousands of different components produced by General Motors of Canada Limited and related companies and their suppliers. From time to time during the manufacturing process, it may be necessary, in order to meet public demand for particular vehicles or equipment, or to meet federally mandated emission and safety requirements or fuel economy guidelines, or for other reasons, to produce vehicles with different components or differently sourced components than initially scheduled. All such components have been approved for use in our products by General Motors of Canada Limited or related companies and will provide the quality performance associated with our name.

Please note that certain optional equipment can be ordered only in conjunction with other optional equipment. Also, upgrading from specified standard equipment may be necessary when certain optional equipment is ordered. Ask your sales representative for details.

With respect to extra cost optional equipment, make certain you specify the type of equipment you desire on your vehicle when ordering it from your dealer. Some options may be unavailable when your car is built. Your dealer receives advice regarding current availability of options. You may ask the dealer for this information. GM also requests the dealer to advise you if an option you ordered is unavailable. We suggest you verify that your car includes the optional equipment you ordered or, if there are changes, that they are acceptable to you.

All illustrations and specifications contained in this catalogue are based on the latest product information available at time of publication approval. The right is reserved to make changes at any time, without notice, in prices, colours, materials, equipment, specifications and models, and to discontinue models. Some of the equipment shown or described throughout this catalogue is available at extra cost. Check with your Chevrolet dealer for complete information.