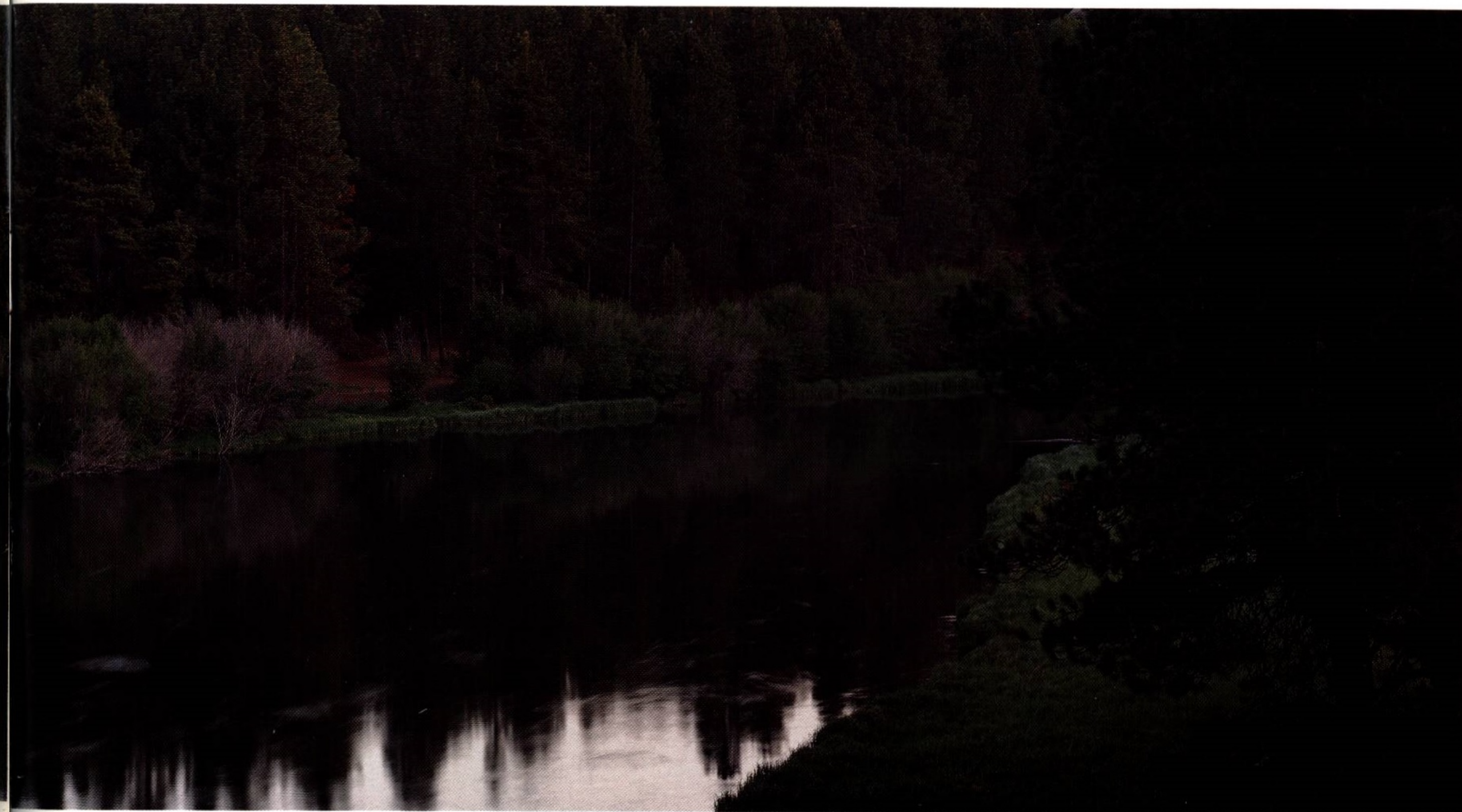


J E E P[®]
WAGONEERS
1988



From mountains and seashores and deserts and plains to all the highways and byways in between, as we have discovered the many splendors of this land, the Jeep legend has been with us. For nearly five decades, Jeep has been synonymous with our pursuit of adventure.

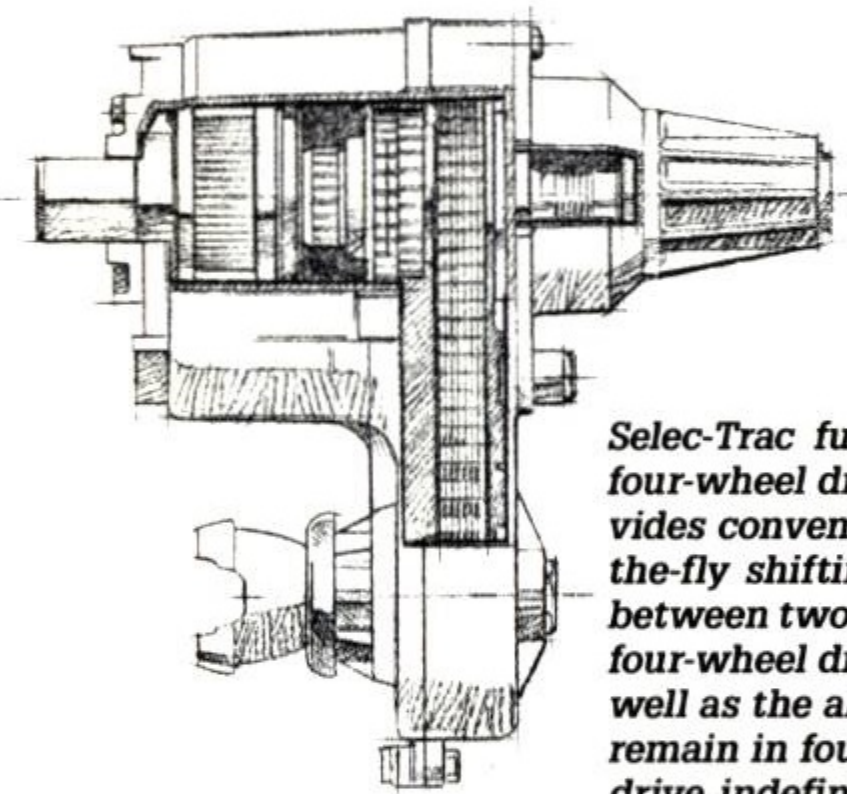
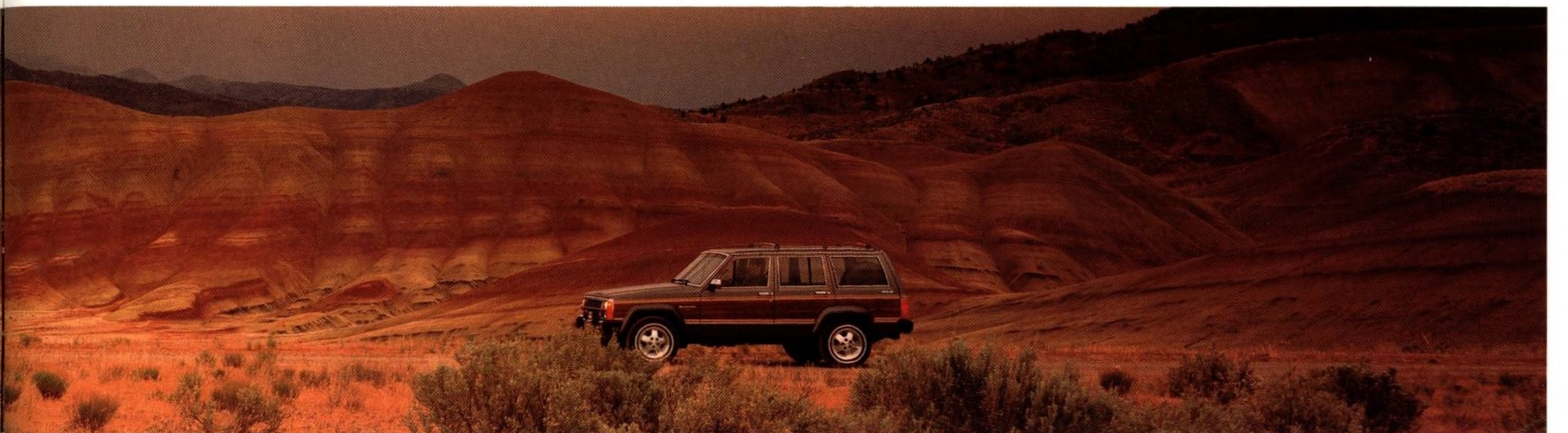
Like all legends, Jeep has more than stood the test of time—it has defied time. For although the Jeep name now takes many forms, each remains true to the spirit of its forebears.

In the pages that follow, you'll discover two Jeep vehicles that comprise a very special breed—a breed that combines four-wheel drive ruggedness and versatility with luxury and style as only Jeep can—Jeep Wagoneer Limited and Jeep Grand Wagoneer.

You'll learn why these vehicles have come to hold such a special place in our American heritage, but more important, you'll learn what the Jeep legend is all about.

J E E P
W A G O N E E R L I M I T E D



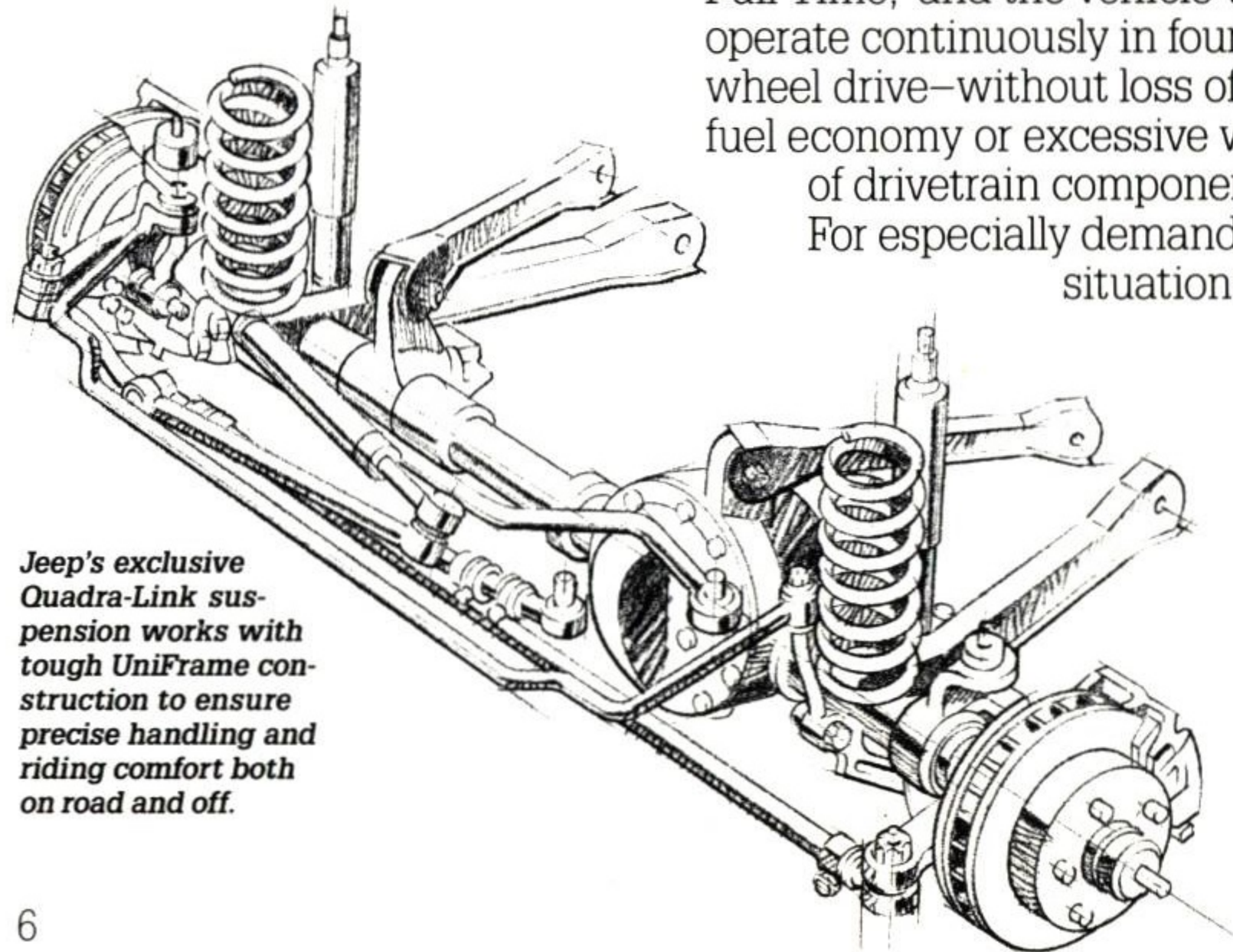


Selec-Trac full-time four-wheel drive provides convenient on-the-fly shifting between two- and four-wheel drive, as well as the ability to remain in four-wheel drive indefinitely without loss of fuel economy or excessive wear of drivetrain components.

Power Principles.

An exacting blend of style and comfort and ruggedness and performance—that's Wagoneer Limited. Backed by over 45 years of experience in four-wheel drive technology, Wagoneer Limited boasts that go-anywhere, do-anything attitude for which Jeep is famous—and it follows through with incomparable style.

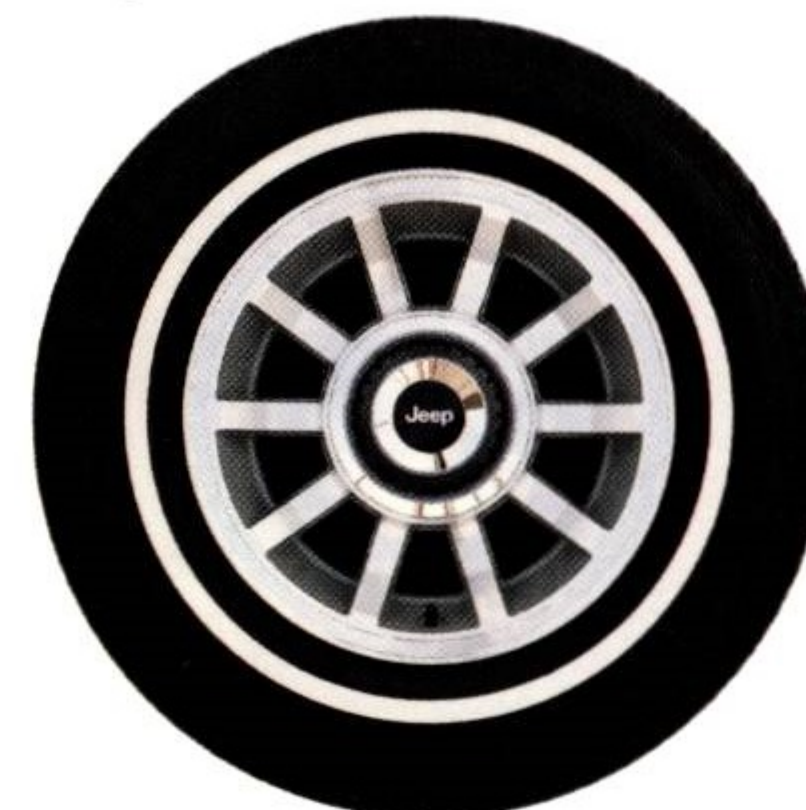
Standard on Wagoneer Limited is Selec-Trac® full-time four-wheel drive. Simply set the new five-position shifter to "4 Full Time," and the vehicle will operate continuously in four-wheel drive—without loss of fuel economy or excessive wear of drivetrain components. For especially demanding situations



Jeep's exclusive Quadra-Link suspension works with tough UniFrame construction to ensure precise handling and riding comfort both on road and off.



Wagoneer Limited's 4.0 litre 6-cylinder engine—the Power-Tech Six—provides 177 horsepower @ 4,500 rpm and 224 foot-pounds of torque @ 2,500 rpm.



Optional 10-spoke, cast aluminum wheels.

axles, thus ensuring the necessary traction. In addition, you'll find the convenience of on-the-fly shifting between two- and four-wheel drive.

both on road and off, a shift to "4 Lo" directs maximum power to front and rear axles.

Inside the transfer case itself, an open differential allows the automatic distribution of torque to the front and rear

The power behind this tough four-wheel drive system is Jeep's 4.0 litre I-6 engine, now standard on Wagoneer Limited. With 177 horsepower @ 4,500 rpm and 224 foot-pounds of torque @ 2,500 rpm, the Power-Tech Six is the most powerful engine in its class, and it gives you the power to get where you're going.

This engine is matched to a standard 4-speed automatic overdrive floor shift transmission with electronic shift control, a lock-up torque converter, and two driver-selected shift schedules—"Comfort" for

normal driving and "Power" for increased acceleration.

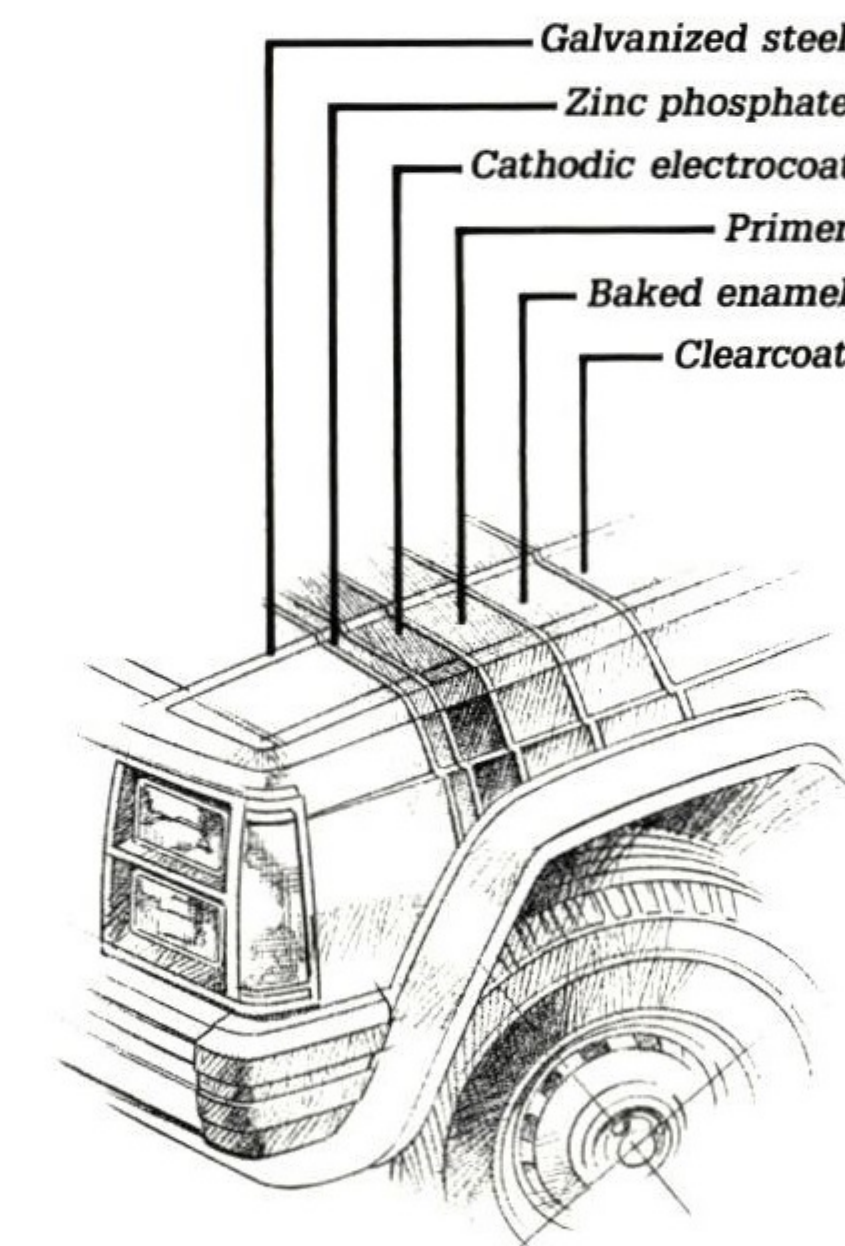
For further driving ease and safety, there are standard front disc/rear drum brakes, power steering, and Michelin® self-sealing radial tires—all to provide Wagoneer Limited with the ruggedness and durability you need.

Toughness of the body itself begins with UniFrame construction, an integrated frame and body unit designed to keep the vehicle lightweight as well as improve overall strength. This is joined by Quadra-Link® suspension, which features a unique solid axle with four locating arms, front track bar, coil springs, front and rear stabilizer bars, and dual-action shock absorbers. Together, Quadra-Link and



Newly designed shift bezel for Selec-Trac is convenient and easy to read.

UniFrame ensure agile on-road performance and precise handling, while providing the flexibility for off-road traction



Extensive anti-corrosion treatments ensure Wagoneer Limited's lasting toughness.

and riding comfort.

The same qualities that make Wagoneer Limited excel in performance, ride, and handling categories also enable it to provide Class III towing capacity—a maximum loaded trailer

weight of up to 5,000 pounds.

But toughness under the skin would be nothing without the toughness of the skin itself. From the use of galvanized steel on exterior panels to extensive cleaning of all body surfaces in a phosphate bath, the emphasis is on creating a vehicle that will last. To this end, Wagoneer Limited receives a primer coat that is electrostatically bonded to the

sheet metal and a urethane coating that is applied to the lower bodyside to protect against stone damage. A final coat of enamel and a top clearcoat are then applied—giving Wagoneer Limited a rich, durable finish.

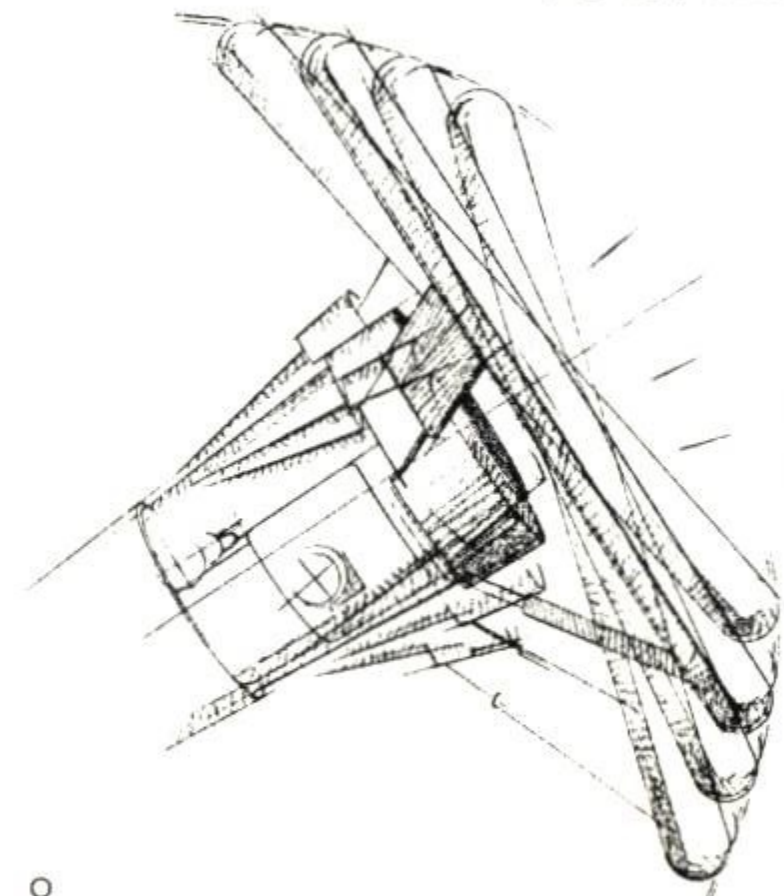
Wagoneer Limited is built to withstand the rigors of time and the elements, and that is, after all, what everyday driving is all about.



Wagoneer Limited's tough engineering systems and rugged Jeep character make it an exceptionally dependable vehicle.



Wagoneer Limited's attention to comfort, convenience, and function is enhanced by a standard roof rack and, for added enjoyment, an optional manual sunroof with pop-up, removable feature.



A standard tilt steering column provides even more comfort and convenience.



Wagoneer Limited's instrument panel features a full complement of gauges including new four-wheel drive indicator lights, voltmeter, oil pressure, engine temperature, low fuel indicator light, trip odometer, and liquid crystal display clock.

Unrivalled Comforts.

There's something very special about the luxury in Wagoneer Limited: It's Jeep luxury. And that means uncompromising attention to comfort and function—in classic Jeep style.

Wagoneer Limited's luxury begins with a spacious and accommodating environment for driver and passengers. Leather seats with six-way power adjusters in front, plus a folding rear bench, add up to luxurious seating for five.

The driver will find the Wagoneer Limited cabin as functional as it is comfortable.

A full complement of gauges keeps you well informed, and all controls are within easy reach. In addition, you'll find standard features such as a tilt steering column, cruise control, and intermittent wipers, plus a rear window defroster and wiper/washer. And for added safety and convenience, there are optional fog lamps, as well as remote-control locks.

Both driver and passengers will appreciate Wagoneer Limited's many standard features such as air conditioning, power door locks and windows, tinted glass, and carpeting throughout.



Luxurious leather seating, including six-way power adjusters in front and a folding rear bench, provides exceptional comfort and support.



With spacious seating for five and 35.7 cubic feet of cargo space (71.8 cubic feet with rear seat folded), both people and cargo will find Wagoneer Limited extremely accommodating.



Optional AM/FM electronically tuned high-output stereo cassette with Dolby.

Driving Pleasures.

One look inside Wagoneer Limited, and you'll quickly see that the focus is on comfort and convenience. With the longest wheelbase and more interior room than any domestic 4x4 vehicle in its class, Wagoneer Limited ensures riding comfort for both driver and passengers.

Rear seat passengers will find generous hiproom due to the placement of rear seats *in front* of the rear wheelhouses—a design that also offers seating for three in the rear. Further comfort in the rear is provided by a full console with rear heating and cooling ducts. And all passengers will enjoy the optional manual sunroof with pop-up, removable feature.

Once driver and passengers are in place, you'll find a generous 35.7 cubic feet of cargo space. Or, when you really have a load to carry, just fold down the rear seat for a cavernous 71.8 cubic feet of space—more than any domestic 4x4 in its class.

For even more hauling ease, there are standard features such as cargo tie-down hooks, a retractable cargo cover, and skid strips on the floor and rear seatback. Plus, the entire cargo area, rear seatback, and liftgate are carpeted. And for the ultimate in versatility, there's a standard adjustable roof rack.

Wherever you're going, the ride will be easier with one of Wagoneer Limited's premium sound systems. There's the standard AM/FM electronically tuned stereo radio, or you can choose the optional AM/FM electronically tuned high-output stereo cassette with Dolby® and eight optional premium Accusound by Jensen® speakers.

This is only part of a very impressive list of standard and optional features designed to enhance your driving comfort and convenience. They all add up to the ultimate in functional luxury. And that's what Wagoneer Limited is all about.



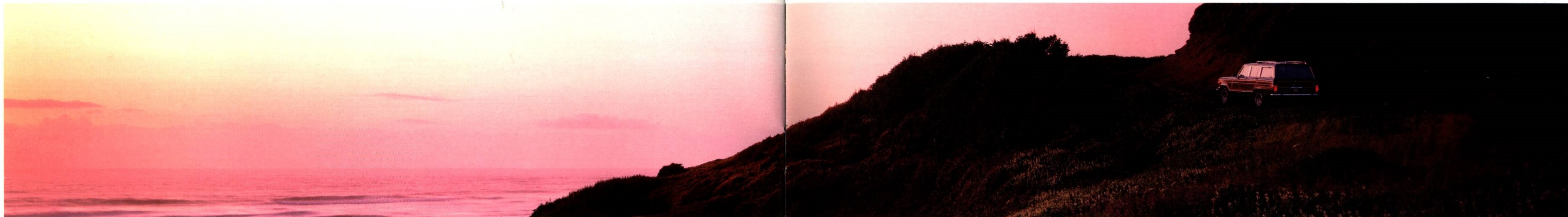
For added convenience and safety, there are standard features such as a rear window defroster and wiper/washer.



A standard full console with rear heating and cooling ducts assures rear seat passengers of riding comfort.

J E E P
G R A N D W A G O N E E R





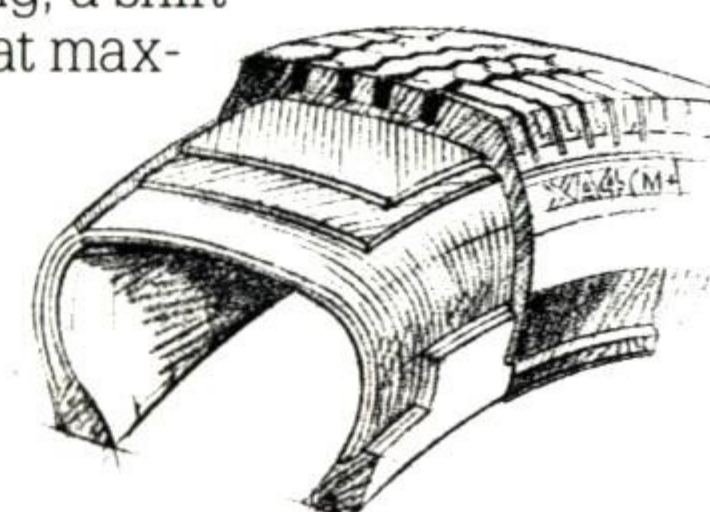
Both on road and off, Grand Wagoneer follows through with classic Jeep ruggedness and strength.

Operating Strength.

Legendary Jeep ruggedness and unrivaled Jeep luxury comprise Grand Wagoneer—the other member of this very special breed from Jeep.

The ruggedness begins with Grand Wagoneer's standard Selec-Trac full-time four-wheel drive system. With this system, the four-wheel drive mode can be engaged indefinitely—no matter what the weather or driving conditions—providing the utmost in versatility without causing excessive wear on the drive-train components or reducing fuel economy.

In addition, Grand Wagoneer features an exclusively designed viscous coupling-controlled slip differential that provides for the automatic delivery of power to the axle with the most traction. And when conditions are at their most demanding, a shift to "4 Lo" ensures that maximum power will go equally to both front and rear axles.



Standard Michelin® self-sealing tires actually seal off punctures that might result in a flat, thereby providing an added dimension of driving security.

Furthering Grand Wagoneer's abilities in classic Jeep style is a standard 5.9 litre V8 engine that delivers 144 horsepower @ 3,200 rpm and 280 foot-pounds of torque @ 1,500 rpm. All of this power and low-end torque make Grand Wagoneer especially practical for towing. Whatever you're hauling—from boat to trailer to camper—Grand Wagoneer's Class III towing capacity lets you do it with ease.

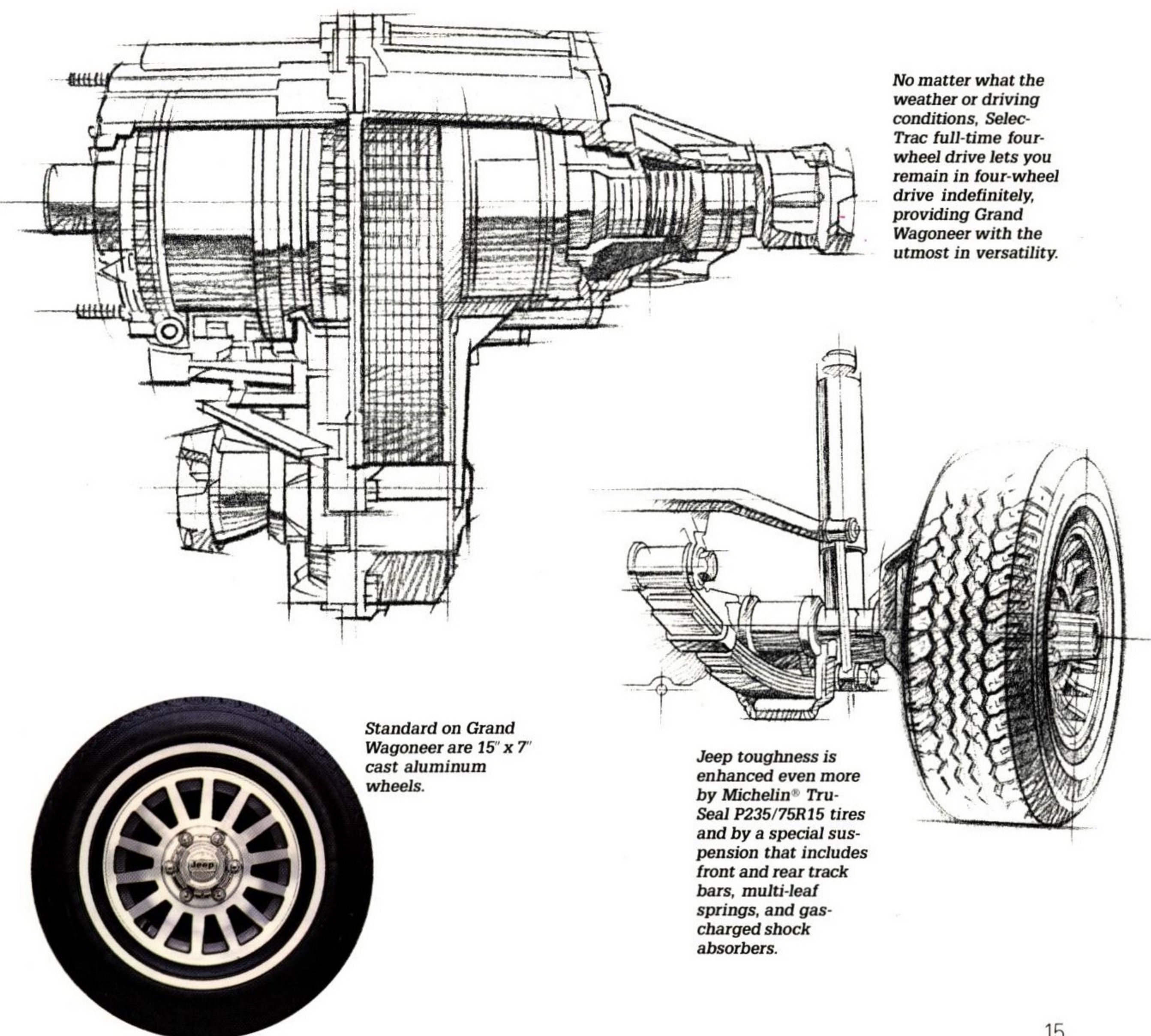
You'll find some very tough structures supporting all of this mechanical strength. Grand Wagoneer features durable body-on-frame construction—a design that provides exceptional stability. Heavy steel side railings increase the rigidity of this structure, while large rubber body mounts absorb the rigors of the road.

Grand Wagoneer's road-ability is enhanced even more

by a special suspension, which works specifically to meet the demands of this full-size vehicle and thus provide the best handling and smoothest possible ride. Included are multi-leaf springs for appropriate under-steer, a front stabilizer bar to control body sway, front and rear track bars to control lateral axle movement, and gas-charged shock absorbers to combat overheating.

This tough system joins standard front disc/rear drum brakes, power steering, and Michelin® self-sealing radial tires to create an exceptionally road-worthy vehicle, and one that transports people and cargo with the utmost ease.

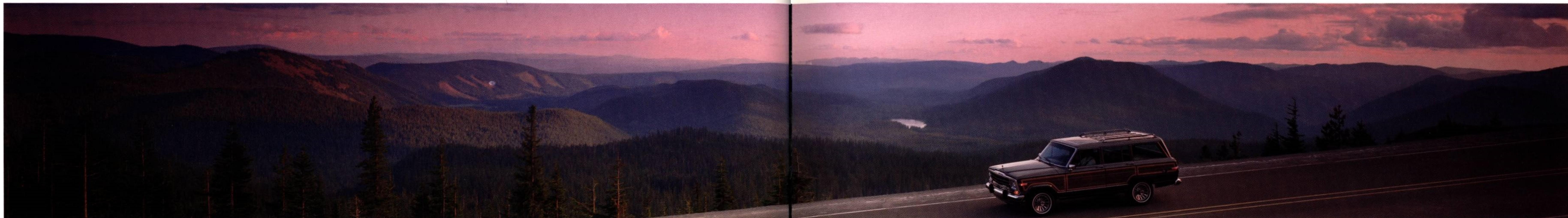
All of these road-going abilities would be nothing without toughness that extends to the body itself. Grand Wagoneer receives an electrocoat primer before robots apply the final coat of enamel, and it then undergoes a series of real-world tests—all to make sure it's ready for your world.



No matter what the weather or driving conditions, Selec-Trac full-time four-wheel drive lets you remain in four-wheel drive indefinitely, providing Grand Wagoneer with the utmost in versatility.

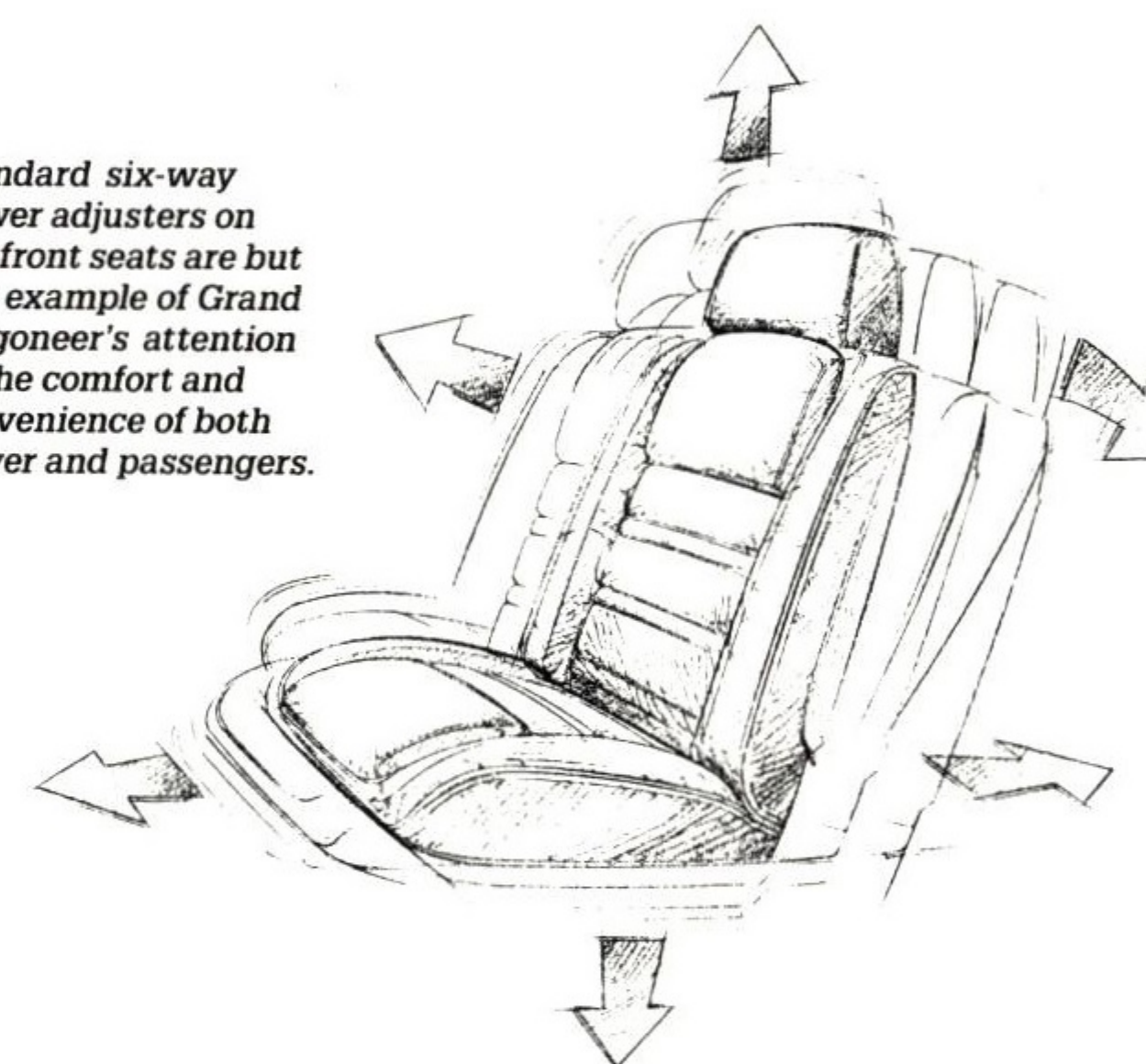
Standard on Grand Wagoneer are 15" x 7" cast aluminum wheels.

Jeep toughness is enhanced even more by Michelin® Tru-Seal P235/75R15 tires and by a special suspension that includes front and rear track bars, multi-leaf springs, and gas-charged shock absorbers.

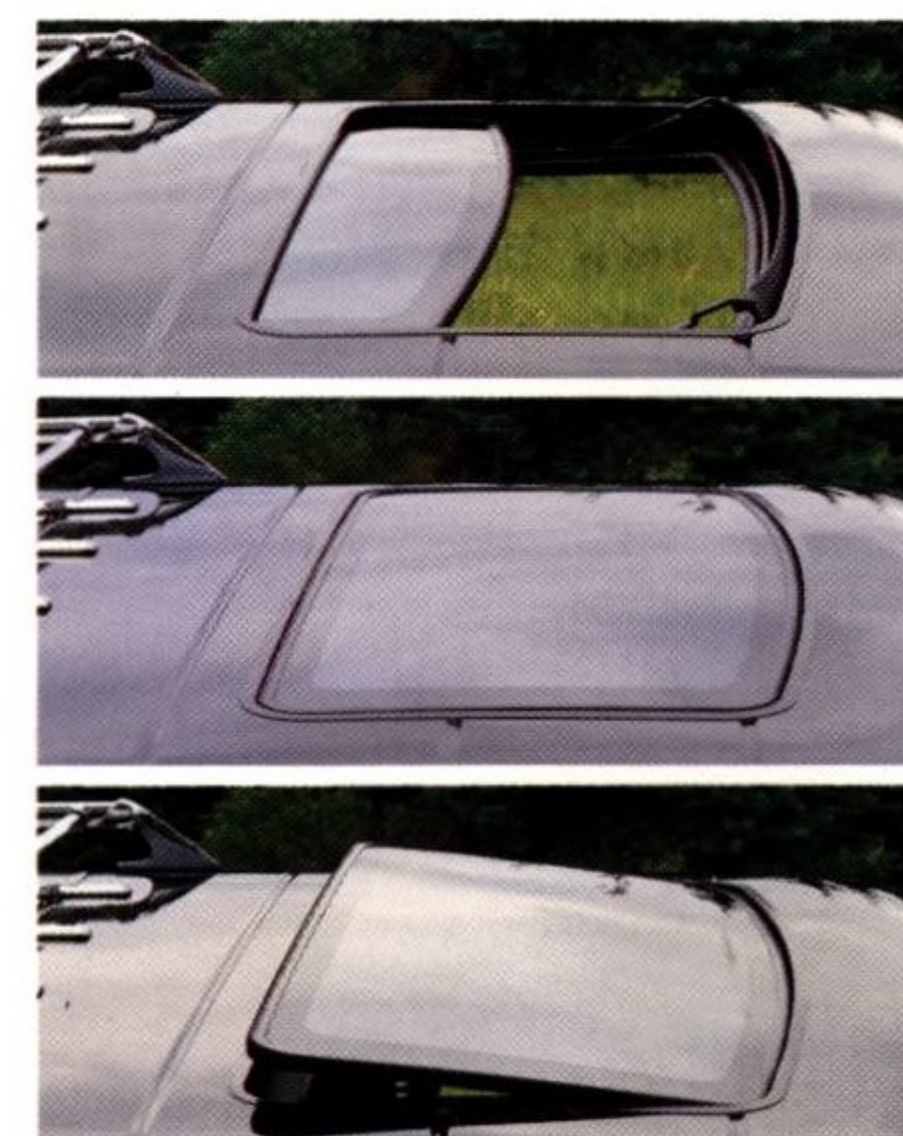


Leather seats with six-way power adjusters in front ensure luxurious and spacious seating for six.

Standard six-way power adjusters on the front seats are but one example of Grand Wagoneer's attention to the comfort and convenience of both driver and passengers.



A new optional electric sunroof, featuring an integral air deflector and venting capability, provides a hint of that classic open-air Jeep experience and makes Grand Wagoneer's luxury complete.



Luxury Accommodations.

Grand comfort and grand style—both a part of that very special category of Jeep luxury that belongs solely to Grand Wagoneer.

The Grand Wagoneer interior is dedicated to achieving maximum comfort and riding ease. To this end, you'll find an extensive list of standard features that work together to create an extremely luxurious environment.

To begin with, spacious and comfortable seating for six is provided by leather seats with six-way power adjusters in front. And you'll find more than 60 inches of hiproom in Grand Wagoneer—front and rear—assuring both driver and passengers of riding comfort.

Standard features for all to enjoy include air conditioning, tinted glass, and a new AM/FM electronically tuned stereo cassette with Dolby® and four

Accusound by Jensen® speakers. Plus, for a hint of that classic open-air Jeep experience, there's a new optional electric sunroof with integral air deflector and venting capability.

Grand Wagoneer provides a host of comfort and convenience features for the driver too. Like a leather-wrapped sport steering wheel, tilt steering column, and distinctive woodgrain-trimmed instrument panel that places all gauges and controls within a clear line of sight and easy reach.

And the list doesn't stop there. Other standard features include cruise control, intermittent wipers, dual electric remote-control mirrors, power rear window, and a rear window wiper/washer.



For premium sound and riding enjoyment, Grand Wagoneer features a standard AM/FM electronically tuned stereo cassette with Dolby® and four Accusound by Jensen® speakers.



Uncompromising luxury, style, and ruggedness—as only Jeep can provide—that's what you get with Grand Wagoneer.



You'll really appreciate the added safety and convenience of standard fog lamps.



With the rear seat in place, there's an impressive 43.1 cubic feet of cargo space—complete with carpeting, skid strips for easy loading and unloading, and a retractable cargo cover.

Sensible Functions.

In every way, Grand Wagoneer ensures that driver, passengers, and cargo receive the best possible treatment. To achieve this, it was necessary that all areas of the Grand Wagoneer interior be designed with them in mind.

In addition to spacious and luxurious six-passenger seating, there's a most impressive 43.1 cubic feet of cargo space. Or, fold the rear seat for 74.5 cubic feet of space—the largest cargo capacity of any Jeep sport utility vehicle available today. With a 4½ × 6-foot flat area for cargo, Grand

Wagoneer is ready to accommodate those extra-large loads—with ease.

For added luxury and convenience, the entire cargo area is carpeted—including the rear seatback and fold-down tailgate—and features skid strips for easy loading and unloading. To keep valuables out of sight, there's a retractable cargo cover. And when you're packing for the long haul, a standard roof rack provides just the versatility you need. No matter where you're going, you'll always have the safety and convenience of standard halogen fog lamps, rear window defroster, and power door locks and windows.

From an overwhelming list of standard luxury appointments to an unerring attention to detail, this vehicle is nothing short of grand. Uncompromising style and comfort and ruggedness and strength as only Jeep can provide—that's what you get with Grand Wagoneer.



With luxurious seating for six and 43.1 cubic feet of cargo space (74.5 cubic feet with rear seat folded), you can be sure that Grand Wagoneer looks out for people as well as cargo.

JEEP WAGONEERS SPECIFICATIONS



STANDARD & OPTIONAL FEATURES

Wagoneer Limited

S—Standard X—Optional

FUNCTIONAL

AIR CONDITIONING	Includes heavy-duty battery, belt-driven fan, and auxiliary electric fan	S
ALTERNATOR	12-volt, 61-amp	S
AXLE	Front—solid axle w/4 locating arms, single cardan outboard joints and live spindle hubs; standard axle ratio 3.55:1 Rear—solid axle, semi-floating open-end Hotchkiss design; standard axle ratio 3.55:1	S
BATTERY	Heavy-duty, 12-volt (58-475 cold crank amps)	S
BRAKES	Front—low-drag ventilated disc type with power assist Rear—drum type, self-adjusting with power assist Parking—hand lever-operated (center tunnel-mounted), operates on rear wheels	S
COLD CLIMATE GROUP	Heavy-duty alternator and engine block heater	X
COOLING	Heavy-duty—heavy-duty radiator and auxiliary transmission oil cooler	X
CRUISE CONTROL		S
ENGINE	4.0 litre (242 CID) I-6 with multi-port fuel injection; 9.2:1 compression ratio; 177 horsepower @ 4500 rpm, 224 lb.-ft of torque @ 2500 rpm	S
FUEL TANK	Standard-capacity, 13.5-gallon Extra-capacity, 20.2-gallon	S
HORNS	Dual—low and high note	S
REMOTE-CONTROL LOCKS	Operates all doors and liftgate	X
SKID PLATE PACKAGE	Transfer case, fuel tank, and front suspension skid plates	X
STEERING	Recirculating ball, variable ratio power assist, 14.1:1 ratio	S
SUNROOF	Manual, with pop-up, removable feature	X
SUSPENSION	Front—coil springs, stabilizer bar, steering damper, and dual-action shock absorbers Rear—multi-leaf springs, stabilizer bar, and dual-action staggered shock absorbers Heavy-duty—heavy-duty springs and gas-filled shocks, front and rear	S
TIRES	P205/75R15 WSW Michelin® Tru-Seal puncture-resistant radial with limited-duty spare P205/75R15 black steel radial (all-weather) Conventional full-size spare (replaces compact limited-duty spare)	S
TOW HOOKS	Front (2) and rear (1) (rear not included with Trailer Towing Packages)	X
TRAC-LOK REAR DIFFERENTIAL	Automatically distributes torque to the rear wheel with traction (requires full-size spare)	X

TRAILER TOWING	(See below)	X
TRANSFER CASE	Selec-Trac 2WD/4WD system, NP242 2-speed with shift-on-the-fly capability; includes low range (2.72:1)	S
TRANSMISSION	4-speed automatic overdrive floor shift with lock-up torque converter featuring driver-selected "Power" or "Comfort" shift schedules and shift-on-the-fly Selec-Trac 2WD/4WD system	S
WHEELS	15" x 7", 5-bolt, 5-spoke, cast aluminum (4) (optional fifth wheel) 15" x 7", 5-bolt, 10-spoke, cast aluminum (4 or 5)	S
WINDSHIELD WASHER/WIPER	Electric with intermittent wipers Rear window wiper/washer	S
EXTERIOR		
BUMPERS	Bright with bumper guards and black end caps	S
FENDER FLARES/AIR DAM	Color-keyed	S
FOG LAMPS	Halogen	X
GLASS	Tinted—all windows	S
GRAPHICS/APPEARANCE	Dual upper bodyside and liftgate striping; dual hood, grille opening panel and cowl striping Woodgrain on bodyside and liftgate	S
GRILLE/HEADLAMP BEZELS	Bright	S
HEADLAMPS	Quad rectangular—halogen	S
MIRRORS	Left/right manual remote-control rearview, bright Left/right electric remote-control rearview Left/right low-profile—large, trailer towing type	S
MOLDINGS	Bright—door window frames, drip rails, quarter window surround, windshield surround, liftgate window surround	S
PAINT	Metallic	X
ROOF RACK	Adjustable, with tie-down provision	X
VENT WINDOWS	Front door, swing-out type	S
INTERIOR		
ARMRESTS	Front door, color-keyed, hockey stick type Rear door, color-keyed	S
ASHTRAYS	Front, instrument panel; rear, console	S
CARGO AREA	Tie-down hooks (4) Retractable area cover—vinyl Skid strips on floor and rear seatback	S
CONSOLE	Full—includes armrest, storage box, rear ashtray, rear heating and cooling ducts	S
DOOR TRIM PANELS	Color-keyed Country Cord fabric with woodgrain upper garnish molding and nylon carpeting lower with map pocket	S

FLOOR COVERING	Color-keyed carpeting—passenger and cargo areas, rear seatback, and liftgate Protective floor mats	S
GRAB HANDLES	Roof rail-mounted—front passenger and rear left and right	S
HEADLINER & SUN VISORS	Fabric-covered with lighted visor vanity mirror (passenger side)	S
HEATER/DEFROSTER	Outside air climate control system with power ventilation and side window defrosters Rear window defroster	S
HOOD RELEASE	Inside	S
INSTRUMENT CLUSTER	Gauges—voltmeter, oil pressure and engine temperature, low fuel indicator light, trip odometer, liquid crystal display clock Indicator lights—direction/4-way hazard, high-beam, 4WD Speedometer and fuel gauge Tachometer Warning lights—seat belt, parking brake	S
INSTRUMENT PANEL	Ashtray—tip-out, center-located Cigar lighter Cluster overlay—woodgrain applique with bright surrounds on cluster bezel and vent louvers Energy-absorbing pad, color-keyed Glove box with lock and light Utility bin below glove box	S

Grand Wagoneer

S—Standard X—Optional

FUNCTIONAL

AIR CONDITIONING		S
ALTERNATOR	12-volt, 78-amp	S
AUXILIARY AUTOMATIC TRANSMISSION OIL COOLER	(Required with Trailer Towing Packages)	X
AXLE	Front—solid axle full-floating Hotchkiss design, single cardan outboard joints; standard axle ratio 2.73:1 Rear—solid axle semi-floating Hotchkiss design; standard axle ratio 2.73:1	S
BATTERY	12-volt (56-452 cold crank amps)	S
BRAKES	Front—low-drag ventilated disc type with power assist Rear—drum type, self-adjusting with power assist Parking—foot lever-operated (side of cowl-mounted), operates on rear wheels	S
COLD CLIMATE GROUP	Engine block heater	X
CRUISE CONTROL		S
ENGINE	5.9 litre (360 CID) V8, 2-barrel; 144 hp @ 3200 rpm, 280 lb.-ft of torque @ 1500 rpm	S
FUEL TANK	Standard-capacity, 20.3-gallon	S
HEAVY-DUTY SHOCK ABSORBERS		X
HORNS	Dual—low and high note	S
STEERING	Recirculating ball, variable ratio power assist 16:1 and 13:1	S
SUNROOF	Power with integral air deflector and venting capability	X
SUSPENSION	Front—multi-leaf low-friction springs, stabilizer bar, track bar, special suspension bushings, and gas-filled shock absorbers Rear—multi-leaf low-friction springs, track bar and gas-filled shock absorbers	S
TIRES	P235/75R15 WSW Michelin® Tru-Seal puncture-resistant radial with limited-duty spare Conventional full-size spare (replaces limited-duty spare)	S
TRAC-LOK REAR DIFFERENTIAL	(Includes 3.31 axle ratio; requires full-size spare)	X
TRAILER TOWING	(See below)	X
TRANSFER CASE	Selec-Trac 2WD/4WD system, NP229 with shift-on-the-fly capability; includes low range (2.6:1)	S

LIGHT GROUP	Ashtray light, dome/map light, cargo area light w/tailgate switch, courtesy lights, retractable underhood work light, door switches, visor mirror light, Sentinel headlamp switch	S
MIRROR	Inside, day/night rearview	S
POWER DOOR LOCKS AND WINDOWS	Includes liftgate and liftgate release	S
PROTECTION GROUP	Floor mats, door edge guards, cargo area skid strips	S
SEATS/SEATBELTS	Front six-way power recliner wingback bucket with adjustable headrest—leather/Country Cord fabric Rear folding with removable seat cushion Storage pocket—front seatbacks Lap and shoulder belt restraint system	S
SOUND SYSTEMS	AM/FM electronically tuned stereo radio (4-dual cone speakers) AM/FM electronically tuned AM/FM stereo cassette with Dolby® system (4-dual cone speakers) Eight premium Accusound by Jensen® speakers Power antenna—automatic actuating	S
SPARE TIRE COVER	Vinyl—color-keyed	S
STEERING WHEEL/COLUMN	Color-keyed, leather-wrapped sport, 3-spoke Energy-absorbing column with anti-theft ignition Tilt steering column	S

TRANSMISSION	3-speed automatic column shift with shift-on-the-fly Selec-Trac 2WD/4WD system	S
WHEELS	15" x 7", 5-bolt, cast aluminum (4)	S
WINDSHIELD WASHER/WIPER	Electric with intermittent wipers	S
EXTERIOR		
APPEARANCE	Woodgrain on bodyside and tailgate with wide moldings	S
BUMPERS	Bright with guards and nerf strips	S
FOG LAMPS	Halogen	S
GLASS	Tinted—all windows	S
GRILLE/HEADLAMP BEZELS	Bright	S
HEADLAMPS	Dual rectangular—halogen	S
MIRRORS	Left/right electric remote-control rearview, bright	S
MOLDINGS	Bright—door window frames, drip rails, quarter window surround, windshield surround and lower tailgate	S
PAINT	Metallic	S
ROOF RACK	Adjustable, with woodgrain inserts	S

INTERIOR

ARMRESTS	Front door, color-keyed with woodgrain overlay Rear door, color-keyed	S
CARGO AREA	Retractable area cover—vinyl Skid strips on floor and tailgate	S
DOOR TRIM PANELS	Color-keyed custom vinyl with lower nylon carpeting and wood-grain upper garnish molding	S
EXTRA-QUIET INSULATION PACKAGE	Cargo area silencer pad, and dash and hood insulation pads	S
FLOOR COVERING	Color-keyed 18 oz. carpeting—passenger and cargo areas, rear seatbacks and tailgate Protective floor mats	S
HEADLINER & SUN VISORS	Fabric covered	S
HEATER/DEFROSTER	Outside air climate control system with power ventilation Rear window defroster	S
HOOD INSULATION		S
HOOD RELEASE	Inside	S

Continued on next page

J E E P W A G O N E E R S
S P E C I F I C A T I O N S

INSTRUMENT CLUSTER	Gauges—voltmeter, oil pressure engine temperature, digital clock	S	POWER DOOR LOCKS AND WINDOWS		S
	Indicator lights—direction/4-way hazard, high beam, 4WD	S			
	Speedometer and fuel gauge	S			
	Warning lights—seat belt, parking brake	S			
INSTRUMENT PANEL	Ashtray, tip-out, left of center	S	POWER TAILGATE WINDOW	Interior and exterior operation	S
	Cigar lighter	S			
	Cluster overlay—woodgrain applique with bright surrounds on cluster bezel and vent louvers	S	SEATS/SEAT BELTS	Front six-way power bucket with headrest and folding center armrest—leather/Cumberland Cord fabric	S
	Energy-absorbing pad, color-keyed	S		Rear fold and tumble	S
	Glove box with lock and light	S		Lap and shoulder belt restraint system—front outboard	S
				Lap belts only, center front and rear (3)	S
LIGHT GROUP	Ashtray light, map light, cargo area light, courtesy lights, visor mirror light, glove box light, underhood work light, lights-on warning chime	S	SOUND SYSTEMS	AM/FM electronically tuned stereo cassette with 4 premium Accusound by Jensen® speakers	S
		S			
MIRROR	Inside, day/night rearview	S	STEERING WHEEL/COLUMN	Color-keyed, leather-wrapped, 2-spoke	S
				Energy-absorbing tilt column with anti-theft ignition	S

COLOR & TRIM

EXTERIOR COLORS (all paints are clearcoat) Pearl White, Classic Black, Buff Yellow, Sterling Silver Metallic* Dover Gray Metallic* Grenadine Metallic* Briarwood Metallic* Medium Bronze Metallic*	TRIM Wagoneer Limited —Leather/Country Cord Fabric, Cordovan or Tan
	Grand Wagoneer —Leather/Cumberland Cord Fabric, Cordovan or Tan

DIMENSIONS & CAPACITIES (inches unless otherwise specified)

Wagoneer Limited		WIDTH		GROUND CLEARANCE		INTERIOR	
EXTERIOR		Tread		Angle of Approach		FRONT COMPARTMENT	
LENGTH		Front		Angle of Departure		Headroom	
Wheelbase	101.4	Rear		Breakover Angle		Legroom	
Overall Length	165.3	Overall Width Maximum (at wheelip extensions)		Front Axle to Ground (at curb wt.)		Shoulder Room	
OVERHANG		HEIGHT		Rear Axle to Ground (at curb wt.)		Hiproom	
Front	27.5	Overall Height		Minimum Running Ground Clearance		REAR COMPARTMENT	
Rear	36.4			TURNING DIAMETER		Headroom	
				Curb to Curb (ft.)		Legroom	
						Shoulder Room	
						Hiproom	
						INTERIOR VOLUME	
						EPA Interior Volume Index (ft. ³)	
						Cargo Volume (ft. ³)	
						Rear Seat Up	
						Rear Seat Folded	
						Seating Capacity	
						WEIGHTS & PAYLOAD	
						Curb Weight	
						Payload	
						Gross Vehicle Weight	

Grand Wagoneer		WIDTH		GROUND CLEARANCE		INTERIOR	
EXTERIOR		Tread		Angle of Approach		FRONT COMPARTMENT	
LENGTH		Front		Angle of Departure		Headroom	
Wheelbase	108.7	Rear		Breakover Angle		Legroom	
Overall Length	186.4	Overall Width Maximum (at wheelip extensions)		Front Axle to Ground (at curb wt.)		Shoulder Room	
OVERHANG		HEIGHT		Rear Axle to Ground (at curb wt.)		Hiproom	
Front	31.3	Overall Height		Minimum Running Ground Clearance		REAR COMPARTMENT	
Rear	46.4			TURNING DIAMETER		Headroom	
				Curb to Curb (ft.)		Legroom	
						Shoulder Room	
						Hiproom	
						INTERIOR VOLUME	
						Cargo Volume (ft. ³)	
						Rear Seat Up	
						Rear Seat Folded	
						Seating Capacity	
						WEIGHTS & PAYLOAD	
						Curb Weight	
						Payload	
						Gross Vehicle Weight	



TRAILER TOWING

Wagoneer Limited	Trailer Package A	Trailer Package B	Grand Wagoneer	Trailer Package A	Trailer Package B
Maximum Gross Combined Vehicle & Trailer Weight Rating (GCWR)	6510 lbs.	9060 lbs.	Maximum Gross Combination Weight Rating (GCWR)	9175 lbs.	10,275 lbs.
Maximum Loaded Trailer Weight	2000 lbs.*	5000 lbs.*	Maximum Loaded Trailer Weight	3500 lbs.	5000 lbs.
Tongue Load Limit	250 lbs.	750 lbs.	Tongue Load Limit	350 lbs.	750 lbs.
PACKAGE INCLUDES:			PACKAGE INCLUDES:		
Hitch			Hitch		
Dead weight, frame-mounted			Dead weight, frame-mounted		
Load-equalizing hitch receptacle			Load-equalizing hitch square receptacle		
Wiring Harness			Wiring		
5-wire			Heavy-duty flasher & trailer-to-vehicle wiring connector		
7-wire with relays			7-wire w/relays & trailer-to-vehicle wiring connector		
Heavy-duty			REQUIRED EQUIPMENT:		
REQUIRED EQUIPMENT:			Auxiliary Auto. Transmission		
Engine Cooling			Oil Cooler		
Heavy-duty			Axle Ratio		
Full size			3.31		
RECOMMENDED EQUIPMENT:			RECOMMENDED EQUIPMENT:		
Outside Mirrors			Axle Ratio		
Low-profile			3.31		
Low-profile			Conventional Full-Size Spare		
Extra-capacity, 20.2 gals.					
25 square feet					
64 square feet with 5000-lb. trailer; maximum trailer length 25 ft.; trailer sway control required					

1988 JEEP® NEW VEHICLE LIMITED WARRANTY

All 1988 Jeep® vehicles are protected by the 1988 Jeep New Vehicle Limited Warranty. The Base Coverage portion of this warranty provides free repairs and service adjustments for 12 months/12,000 miles on most vehicle components. Upon expiration of the Base Coverage, a number of specific powertrain components receive warranty protection for an additional 24 months/24,000 miles. The Powertrain Coverage, under the New Vehicle Limited Warranty, requires the owner to pay the first \$100 per repair visit for the repair or replacement of any covered items. Ask your dealer about extended protection through factory-approved Jeep Service Contracts. For additional information on warranty coverage and exclusions, consult the Warranty Guide section of your Owner's Manual.

Vehicles illustrated in this catalog may vary slightly from actual production models. Consult your Jeep dealer for recent changes. This catalog does not constitute an offer or commitment to sell. In order that product improvements may be made at any time, specifications and other data are subject to change without notice. Jeep vehicles incorporate thousands of different components produced by Jeep Corporation, affiliated companies and various independent suppliers. From time to time during the manufacturing process, it may be necessary to produce Jeep vehicles with different components or differently sourced components than initially scheduled. All components must meet the standards of Jeep Corporation and will provide the performance expected from Jeep vehicles. Jeep vehicles meet or exceed all applicable Federal Motor Vehicle Safety Standards at the time of manufacture. Some of the Jeep vehicles shown and described in this brochure have

optional equipment displayed. Pictured items and equipment may be options or accessories available at extra cost. Certain equipment items and features may not be available for all models. This catalog contains information that is correct at time of printing; however, Jeep Corporation reserves the right to discontinue or change specifications, models, equipment or prices at any time without incurring obligation. JEEP, WAGONEER, GRAND WAGONEER, QUADRA-LINK, SELEC-TRAC, and COMMAND-TRAC are registered trademarks of Jeep Corporation. In Canada, American Motors (Canada) Inc. is a licensed user. In Puerto Rico and U.S. Virgin Islands, American Motors Pan American Corporation is a licensed user.

Grand Wagoneer is the Official Vehicle of the American Quarter Horse Association. Jeep vehicles are the Official Vehicles of the National Ski Patrol.

Buckle up for safety.

Litho in USA 8/87 Item No. 19904

Only in a Jeep®



Official Sponsor 1988 U.S. Olympic Team