

08 DODGE **NITRO**



GRAB LIFE



DODGE

IT TAKES TO THE STREETS LIKE A RAW SURGE OF ENERGY. ITS POWERFUL STANCE, COMMANDING PRESENCE AND BOLD GRILLE TURN HEADS AS IT TURNS CORNERS. THE PERFORMANCE RESPONDS LIKE A SHOT OF ADRENALINE AND PROPELS IT THROUGH THE STREETS LIKE A FULL-ON INFERNO. THE INTERIOR KEEPS UP WITH A COMBUSTIBLE COMBINATION OF TECH, STYLE AND COMFORT. THIS IS THE ENVY-INDUCING MID-SIZE SUV. THIS IS UNMISTAKABLE. THIS IS DODGE NITRO.



GET YOUR DAILY DOSE OF ADRENALINE

Nitro bolts onto the scene with a commanding presence, sporty performance and a flexible interior. Nitro R/T gets its bang from 260 horsepower and 265 lb-ft of torque and boasts standard 20-inch chrome-clad wheels, body-color grille with bright billets, chrome accent side vents and complete confidence.

Dodge Nitro R/T in Inferno Red Crystal Pearl.



Dodge Nitro SLT in Bright Silver Metallic.
Visit dodge.com/nitro/capability to see Nitro features in motion.

A PRESCRIPTION FOR POWER. Under Nitro's hood looms a powerful SOHC V6 engine. An authoritative 3.7-liter with 210 horsepower and 235 lb-ft of torque is standard on SXT and SLT models. This power plant is teamed to either a six-speed manual or available four-speed automatic transmission. Nitro R/T prescribes a bigger dose of power through a 4.0-liter V6 with 260 horsepower, 265 lb-ft of torque and a highly refined five-speed automatic transmission. **SUSPENSIONS.** A performance-tuned suspension works in tandem with class*-exclusive 20-inch chrome-clad wheels and tires for improved cornering and increased traction (available on SLT, standard on R/T). The sport suspension transfers the perfect blend of handling and control to the pavement through either 16- or 17-inch wheels. **4WD.** Nitro has the most available powertrain combinations in its class* and lets you choose between standard two-wheel drive or an available four-wheel-drive configuration. The part-time system offers the ability to change from 2WD mode to 4WD on the fly (4x4 models).

*Based on 2007 *Automotive News* classification. When properly equipped.



Visit dodge.com/nitro/interior to see Nitro features in motion.

EXCLUSIVE R/T SEATING. The two-tone Dark Slate Gray cloth seats are teamed with unique Red (shown), Orange or Blue cloth inserts, accent stitching and R/T logo. Available monotone Dark Slate Gray leather-trimmed seats feature color accent stitching and an R/T logo. **MYGIG**^{®*}. The available touch-screen MyGIG Multimedia Infotainment System with Navigation is nothing less than the greatest advance in vehicle audio since the CD player. MyGIG is a class¹-exclusive innovation that revolutionizes in-vehicle communications by bundling entertainment, information and communication. It combines navigation with real-time traffic updates via standard SIRIUS[®] Satellite Radio, UConnect[®] Hands-Free Communication System, multiple ways to save and play back music, and high-quality audio. MyGIG features a 20GB hard drive for storing photos and more than 1,000 digital music files, playlists, maps, points of interest and more. **UCONNECT AND SIRIUS.** Go high-tech with an available UConnect voice-activated, hands-free, in-vehicle communication system and standard SIRIUS Satellite Radio. SIRIUS is the exclusive satellite radio provider of Dodge and is available as a factory-installed feature that includes a one-year subscription! SIRIUS delivers over 130 channels of the best programming in all of radio including 100% commercial-free music plus world-class sports, news, talk, entertainment, traffic and weather. SIRIUS broadcasts live sports coverage of over 350 Pro & College teams — NFL, NASCAR,[®] NBA, college sports coverage of 150 schools and more. For more information, go to sirius.com.

*MyGIG in-dash DVD capability is not available in all states. See your dealer for details. ¹Based on 2007 *Automotive News* classification. When properly equipped. "SIRIUS" and the SIRIUS dog logo are registered trademarks of SIRIUS Satellite Radio Inc. "NFL" is a registered trademark of the National Football League. "NBA" is a registered trademark of NBA Properties, Inc. NASCAR[®] is a registered trademark of the National Association for Stock Car Auto Racing, Inc. All other trademarks, service marks and logos are the property of their respective owners. All rights reserved. For full terms and conditions, visit sirius.com. Prices and programming are subject to change. Not available in AK and HI.



1 LCD MONITOR. A 6.5-inch touch-screen LCD monitor with full-color enhanced graphics lets you move seamlessly through MyGIG® functions. **2 INTEGRATED MUSIC JUKEBOX SCREEN.** This function gives you the capability to rip and store music to MyGIG via CD or USB, a Voice Memo Recorder, support for Gracenote® Music File Management and more. **3 SCREEN SAVER.** From your uploaded pictures, choose your favorite and make it your MyGIG customized screen saver. This is pure personalization.



ELECTRONIC VEHICLE INFORMATION CENTER (EVIC). Nitro SLT and R/T models have a standard Electronic Vehicle Information Center that uses steering wheel-mounted switches to access compass, temperature and trip computer readings as well as personal settings, audio modes and system status messages, including a Tire Pressure Monitoring Display. **AUXILIARY AUDIO INPUT JACK.** Take your MP3 player and favorite tunes with you wherever you go because an auxiliary audio input jack is standard on every Nitro. **REMOTE START.** Get a head start at cooling or warming the cabin before even entering Nitro. A simple push of the key fob button will not only start the vehicle — but also the temperature control system if left on — from up to 300 feet away.



LOAD 'N GO®

The benefits of brilliant design are immense. Nitro's available class*-exclusive LOAD 'N GO is as helpful as an extra pair of outstretched hands. Standard on SLT and R/T models, the floor slides out 18 inches for easier loading of heavy or awkward items and keeps clothing away from a dirty bumper. With a 400-pound capacity and six cargo tie-downs, you can confidently carry it all. Nitro easily handles a heavy load, whether it's your newest purchase for home or your favorite friends using LOAD 'N GO as the perfect tailgating bench before the game.

*Based on 2007 *Automotive News* classification. Properly secure all cargo.



Dodge Nitro SLT in Modern Blue Pearl.
Visit dodge.com/nitro/loadngo.

AUTHENTIC DODGE ACCESSORIES

When you enhance your Nitro with Authentic Dodge Accessories by Mopar, you gain far more than substantial style, premium protection or extreme entertainment. You also benefit from the authentic difference found only in an original equipment accessory. It's a difference that demands tighter tolerances and envelope-pushing testing methods. And one backed by a superior warranty* serviced by Dodge dealerships nationwide. Choose the full line of Dodge Accessories that feature a fit, finish and functionality designed specifically for your Nitro. Check us out at mopar.com.

CHROME TUBULAR SIDE STEPS. When it's time to step it up, these side steps feature corrosion-resistant aluminum and skid-resistant surfaces for conveniently good-looking entry and exit. **CHROME BODYSIDE MOLDING.** Give a gleam to your doors while accenting your Nitro's strong body lines with this popular accessory. **CHROME FUEL FILLER DOOR.** This sculpted one-piece design replaces existing fuel door and brightly complements any body color. **CHROME FRONT AIR DEFLECTOR.** Say yes to rugged style and no to road spray, dirt and other debris scratching and damaging the hood of your new Nitro (also available in Smoke). **CHROME MIRROR COVERS.** Reflect your personal sense of style with these covers that meet Dodge standards for quality, fit and finish. **SUNROOF AIR DEFLECTOR.** Cutting out wind noise is a breeze with this acrylic, tinted air deflector, designed to follow the contours of your roof to reduce noise and turbulence when vehicle is moving.

*See your dealer for full details and a copy of the limited warranty.



Dodge Nitro SLT "G" interior shown with two-tone Slate Gray leather-trimmed seats.
Visit dodge.com/nitro/interior to see Nitro features in motion.

FLEXIBLE SEATING FOR FIVE. It starts with spacious seating for five adults and an available power six-way driver's seat. And because Nitro's attitude runs deeper than sheet metal and bulked-up tires, the standard interior is anything but ordinary. Choose between a mix of two-tone or monochromatic configurations and heated leather-trimmed seating choices. Two-tone color configurations reach from seats to the door trim to the instrument panel. Deluxe monochromatic packages up the ante with Satin Silver accents. **YES ESSENTIALS®* SEAT FABRIC.** Don't worry if all those extra passengers make a mess. Available YES Essentials stain resistant, odor resistant, antistatic cloth seat fabric employs a dual-action technology to help resist stains by beading spills for easy cleaning. **FOLD-FLAT SEATING.** Class¹-exclusive standard fold-flat front-passenger bucket and rear 65/35 split-folding seats provide the flexibility to create a flat surface for added cargo-carrying capacity. All seats, even the rear seats, recline for ultimate passenger comfort. **FRONT-PASSENGER MOLDED SEATBACK.** When there's no one to call shotgun, fold the low-back bucket front-passenger seat forward to expose the molded passenger seatback that can be used as a handy utility table for your laptop or other items.

*Not compatible with aftermarket fabric-protecting coatings. ¹Based on 2007 *Automotive News* classification.



Dodge Nitro R/T in Inferno Red Crystal Pearl.
Visit dodge.com/nitro/exterior to see Nitro features in motion.

PROCEED WITH CAUTION

Nitro was designed to be a big dose of boldness in the world of look-alike SUVs. It wears its signature Dodge crosshair grille like a badge of honor. Nitro's large headlamps attach to the grille for a custom fit and finish appearance. Chiseled lines, tough wheels-to-the-corner stance and standard side vent detailing, chrome accents and fender flares — Dark Slate Gray or body-color, depending on model — give Nitro an edge worthy of yours.



SAFETY AND SECURITY

1 STANDARD ELECTRONIC STABILITY PROGRAM (ESP).* ESP, which includes all-speed traction control, Brake Assist, Electronic Roll Mitigation and Trailer Sway Control, assists drivers in maintaining control of their vehicles during extreme steering maneuvers. ESP works to correct the vehicle's course by automatically controlling the throttle and applying the brakes at individual wheels. All-speed traction control reduces engine power, applies the brakes to spinning wheels and transfers torque to the appropriate wheel when slippage is detected. Brake Assist automatically increases braking pressure to its maximum force during emergency brake situations. Electronic Roll Mitigation senses when a rollover may occur and applies braking force to the correct wheel to reduce the likelihood of such an event. Trailer Sway Control detects "sway" unique to trailering and then engages Nitro's brakes to slow the vehicle and trailer down, reduces engine torque and then increases the brake force to only one side of the vehicle to help counteract the sway from the trailer. **2 ADVANCED MULTISTAGE DRIVER AND FRONT-PASSENGER AIR BAGS.**† Every Nitro model features standard advanced multistage driver and front-passenger air bags with Occupant Classification System (OCS) that provide nearly instantaneous occupant protection by matching air bag output to crash severity. **3 SUPPLEMENTAL SIDE-CURTAIN AIR BAGS.**‡ Standard supplemental side-curtain air bags with roll-sensing technology add additional protection to front and rear outboard passengers in the event of a side impact. **4 ANTILOCK BRAKE SYSTEM (ABS).** This standard four-wheel disc system helps prevent wheel lockup for improved steering under extreme braking or slippery conditions. **5 TIRE PRESSURE MONITOR.** Keep an eye on safe and proper tire pressure. A display alert comes through the Electronic Vehicle Information Center (EVIC) or a warning lamp (on SXT models) when low tire pressure is detected. **6 PARKSENSE.**® Available ParkSense Rear Park Assist System‡ gives you some added insight before you begin to back up. Thanks to four rear fascia-mounted sensors that emit ultrasonic sound waves to a distance of up to six feet and increase in frequency as objects get closer, you'll have a better determination of your distance from other objects while driving in reverse.

*No system, no matter how sophisticated, can repeal the laws of physics or overcome careless driving actions. Performance is limited by available traction, which snow, ice and other conditions can affect. When the ESP warning lamp in the speedometer flashes, the driver needs to use less throttle and adapt speed and driving behavior to prevailing road conditions. Always drive carefully, consistent with conditions. Always wear your seat belt. †Always sit properly in the seat with the seat belt fastened. Always observe the passenger air bag indicator lamp to determine if the OCS classification is appropriate. Children 12 and under should always be in a backseat correctly using an infant or child restraint system or the seat belt positioned correctly for the child's age and weight. ‡Always check entire surroundings before backing up.



NITRO R/T
IN INFERNO RED CRYSTAL PEARL

108.8"

NITRO SLT
IN BRILLIANT BLACK CRYSTAL PEARL

NITRO SXT
IN BRIGHT SILVER METALLIC



THE 2008 DODGE NITRO INCLUDES A LIFETIME POWERTRAIN LIMITED WARRANTY.
See dealer for a copy of limited warranty and details. No deductible. Non-Transferable. Not available on SRT, diesel and certain fleet vehicles.

NITRO TRIM LEVELS

NITRO R/T. R/T includes the standard gear of the SLT trim level except where additions are noted: 4.0-liter SOHC V6 with five-speed automatic transmission, monochromatic exterior (sill molding, air dam, and grille with bright billets), 20-inch chrome-clad wheels with performance-tuned suspension, deluxe monochromatic interior trim with bright bezels, R/T logo on seats, two-tone Dark Slate Gray cloth seats with unique Red, Blue or Orange inserts and color accent stitching or available monotone Dark Slate Gray leather-trimmed seats with color accent stitching.

NITRO SLT. SLT includes the standard gear of the SXT trim level except where additions are noted: 3.7-liter SOHC V6 with four-speed automatic transmission, body-color front/rear fascias/fender flares and bodyside moldings, fog lamps, 17-inch wheels with sport suspension, two-tone seats with YES Essentials® Seat Fabric, two-tone interior trim with bright bezels, LOAD 'N GO® slide-out rear cargo floor, heated power exterior mirrors, Electronic Vehicle Information Center (EVIC), steering wheel-mounted audio controls, overhead console, HomeLink® Universal Transceiver, auto-dimming rearview mirror, power six-way driver seat, Tire Pressure Monitor display.

NITRO SXT. All Nitro SXT models include these features: 3.7-liter SOHC V6 with either a six-speed manual or available four-speed automatic transmission, Dark Slate Gray front/rear fascias/fender flares, Black bodyside moldings, chrome grille, 16-inch wheels with sport suspension, two-tone cloth seats, reversible/removable cargo floor with shallow tray underneath for additional storage, AM/FM radio with CD player, MP3 auxiliary audio input jack, four speakers, SIRIUS® Satellite Radio, forward fold-flat front-passenger and rear seats, 65/35 rear split-folding reclining seats, 12-volt power outlet, four-wheel disc ABS, Electronic Stability Program with all-speed traction control, Brake Assist, Electronic Roll Mitigation and Trailer Sway Control, advanced multistage front air bags with Occupant Classification System (OCS), supplemental side-curtain air bags, LATCH, Tire Pressure Monitor warning lamp, independent front/five-link solid rear axle suspensions, Sentry Key®, power exterior mirrors/windows/locks.



MODERN BLUE PEARL

LIGHT GRAYSTONE PEARL

STONE WHITE

ELECTRIC BLUE PEARL

SUNBURST ORANGE PEARL

NITRO FABRICS

EXTERIOR COLOR

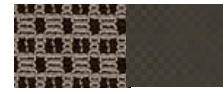
- Bright Silver Metallic
- Brilliant Black Crystal Pearl
- Electric Blue Pearl
- Inferno Red Crystal Pearl
- Light Graystone Pearl
- Modern Blue Pearl
- Stone White
- Sunburst Orange Pearl

R/T	SXT	SE
G, H, I (J)	C (E)	A
G, H, I (J)	C, D (E, F)	A, B
H (J)	C (E)	N/A
G (J)	C, D (E, F)	A, B
N/A	D (F)	B
N/A	C, D (E, F)	A, B
G, H, I (J)	C, D (E, F)	A, B
I (J)	C, D (E, F)	N/A

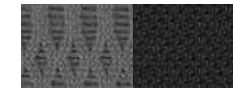
STANDARD ON ALL MODELS
standard (optional)



A Everest II/Wallace II cloth
Slate Gray Two-Tone



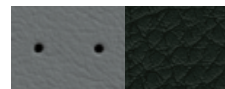
B Everest II/Wallace II cloth
Khaki Two-Tone



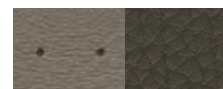
C Astor and Racine cloth w/ YES Essentials® Slate Gray
Two-Tone



D Astor and Racine cloth w/ YES Essentials® Khaki
Two-Tone



E Royal Radar Leather Trim/Sutton Vinyl
Slate Gray Two-Tone



F Royal Radar Leather Trim/Sutton Vinyl
Khaki Two-Tone



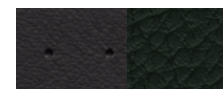
G Alias/Wallace II cloth
Red/Dk. Slate Gray Two-Tone



H Alias/Wallace II cloth
Blue/Dk. Slate Gray Two-Tone

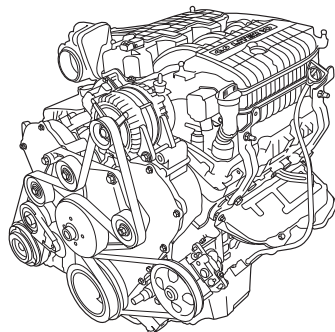


I Alias/Wallace II cloth
Orange/Dk. Slate Gray Two-Tone



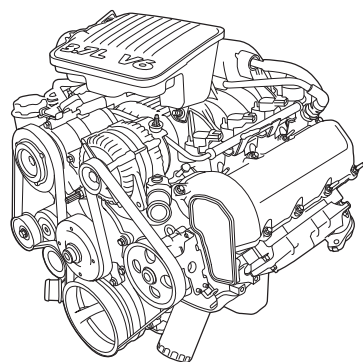
J Royal Radar Leather Trim/Sutton Vinyl
Dk. Slate Gray Monotone

NITRO ENGINES



4.0-LITER SOHC V6

Standard on Nitro R/T
260 horsepower @ 6,000 rpm
265 lb-ft of torque @ 4,200 rpm



3.7-LITER SOHC V6

Standard on Nitro SXT and SLT
210 horsepower @ 5,200 rpm
235 lb-ft of torque @ 4,000 rpm

NITRO WHEELS



Styled to enhance Nitro's abundant attitude, every wheel choice makes a brilliant statement all its own.

- 1 16-inch styled steel wheel (standard on SXT "B")
- 2 16-inch cast aluminum wheel (standard on SXT "C")
- 3 17-inch cast aluminum wheel (standard on SLT "F"/available on SXT "C")
- 4 17-inch chrome-clad cast aluminum wheel (standard on SLT "G")
- 5 20-inch chrome-clad cast aluminum wheel (standard on R/T/available on SLT)
- 6 20-inch five-spoke gloss Black cast aluminum wheel, with machined bright face (Dodge Accessory)

NITRO BUYER'S GUIDE

FEATURES COMMON ACROSS ALL TRIM LEVELS

AIR BAGS ⁽¹⁾ — Advanced multistage driver and front-passenger with Occupant Classification System (OCS) — Supplemental side-curtain air bags with roll-sensing technology offer additional protection to front and rear outboard occupants in the event of a collision
AIR CONDITIONING — Manual temperature control
AXLE — Front, 30/186 mm ⁽²⁾ — Rear, 8.25
BATTERY — 600-amp maintenance-free
BRAKES — 4-wheel disc with ABS
CONSOLE — Floor
COOLER — Auxiliary transmission oil
ELECTRONIC STABILITY PROGRAM ⁽³⁾ — ESP (includes all-speed traction control, Brake Assist, Electronic Roll Mitigation and Trailer Sway Control)
GLASS — Tinted windshield
KEYLESS ENTRY
LOCKS — Speed-sensitive power
POWER OUTLET — 12-volt (front)
RADIO — AM/FM radio with CD player and MP3 auxiliary input jack
SEATS — Front-passenger forward fold-flat — Rear 65/35 split-folding with recline
SENTRY KEY [®] — Antitheft engine immobilizer
SIRIUS [®] SATELLITE RADIO
SPEAKERS — 4 total
TIRES — Spare, compact-size
TRANSFER CASE ⁽²⁾ — Part-time 4WD system 143 GII New Venture

• = Standard. P = Available within package noted. O = Optional.

	SXT		SLT		R/T
	B	C	F	G	L
ENGINE AND TRANSMISSION					
3.7L Magnum V6/6-Speed Manual	•	•			
3.7L Magnum V6/4-Speed Automatic VLP	O	O	•	•	
4.0L SOHC V6/5-Speed Automatic					•
MECHANICAL					
AXLE RATIO — 3.21:1 (requires 6-speed manual transmission) — 3.55:1 (included with 4.0L V6 SOHC) — 3.73:1 (included with 4-speed automatic)	•	•			P
COOLER — Power steering (included with Heavy-Duty Engine Cooling)	P	P	P	P	P
ENGINE BLOCK HEATER	O	O	O	O	O
HEAVY-DUTY ENGINE COOLING — Includes power steering cooler (included with the Trailer Tow Group; not available with 6-speed manual)	P	P	P	P	P
REMOTE START SYSTEM — Included with Convenience Group			P	P	P
SUSPENSION — Sport — Performance-tuned (included with 20" wheels)	•	•	•	•	•
TIP START — Quick start, prevents double starts, preserves battery, ignition and gear life (included with automatic transmissions)	P	P	•	•	•
EXTERIOR FEATURES					
AIR DAM — Front, Dark Slate Gray (molded-in color) — Front, body-color	•	•	•	•	•
FASCIAS — Front and rear, Dark Slate Gray (molded-in color) — Front and rear, body-color	•		•	•	•
FENDER FLARES — Dark Slate Gray (molded-in color) — Body-color	•		•	•	•
FOG LAMPS — Two integrated in front fascia		•	•	•	•
GLASS — Solar-Control — Deep-tint sunscreen side and rear	•		•	•	•
GRILLE — Chrome with Black billets — Body-color with Chrome billets	•	•	•	•	•
LICENSE PLATE BROW — Black (molded-in color) — Chrome	•	•		•	•
MIRRORS, EXTERIOR — Dual power, folding — Dual heated, power	•	•		•	•

	SXT		SLT		R/T
	B	C	F	G	L
EXTERIOR FEATURES (CONTINUED)					
MOLDING — Black (molded-in color) bodyside — Bodyside, body-color	•				
ROCKER SILLS — Bodyside, Black (molded-in color) — Bodyside, body-color	•	•	•	•	•
TIRES — P225/75R16 BSW, all-season (requires 16" wheels) — P235/65R17 BSW, AS performance (requires 17" wheels) — P235/65R17 OWL performance (requires 17" wheels) — P245/50R20 VSB AS performance (included with 20" wheels) — Spare, full-size (included with Trailer Tow Group)	•	•			
WHEELS — 16x7-inch styled steel — 16x6.5-inch cast-aluminum — 17x7-inch cast-aluminum — 17x7-inch chrome-clad cast-aluminum — 20x7.5-inch chrome-clad cast-aluminum (includes performance-tuned suspension) — 20x7.5-inch five-spoke gloss Black cast-aluminum with machined bright face (Dodge Accessory), requires performance-tuned suspension	•	•			
INTERIOR FEATURES					
CONSOLE — Overhead (included with power sunroof)		P	•	•	•
DOOR TRIM PANEL — Base, monochromatic — Premium, two-tone — Deluxe, monochromatic	•	•			•
ELECTRONIC VEHICLE INFORMATION CENTER (EVIC)			•	•	•
FLOOR MATS — Two luxury front with Dodge logo and two rear		•	•	•	•
HOMELINK [®] UNIVERSAL TRANSCEIVER			•	•	•
INSTRUMENT CLUSTER — Includes speedometer, tachometer, oil temperature and fuel gauge — Includes speedometer, tachometer, oil temperature and fuel gauge with display screen	•	•			•
INSTRUMENT PANEL — Monotone — Two-tone — Monotone with Satin Silver bezel	•	•		•	•

	SXT		SLT		R/T
	B	C	F	G	L
INTERIOR FEATURES (CONTINUED)					
MIRRORS, INTERIOR	•	•			
— Rearview day/night					
— Rearview auto-dimming			•	•	•
— Rearview auto-dimming (included with UConnect®)			P	P	P
POWER OUTLETS — 115-volt AC inverter		•	•	•	•
REAR CARGO	•	•			
— Reversible and removable cargo floor					
— 6 cargo tie-downs			•	•	•
— LOAD 'N GO® slide-out floor			•	•	•
SPEED CONTROL		•	•	•	•
STEERING WHEEL	•	•			
— Four-spoke					
— Leather-wrapped four-spoke with integrated speed and audio controls			•	•	•
SUN VISORS	•				
— Sliding shaft					
— Dual with illuminated vanity mirror and slide feature		•	•	•	•
SUNROOF — Power with express-open and vent (includes overhead console)		O	O	O	O
WINDOWS	•	•			
— Power, driver express down					
— Power, driver express up and down and passenger express down			•	•	•
SEATING AND TRIM					
SEATS					
— Heated front bucket (included with leather-trimmed seats; requires Premium Sound System)				•	P
— Low-back two-tone cloth bucket	•	•			
— Premium low-back two-tone cloth bucket with YES Essentials® Seat Fabric ⁽⁴⁾			•		
— Low-back two-tone leather-trimmed bucket				•	
— Low-back two-tone cloth bucket with Red, Blue or Orange inserts, stitching and R/T logo					•
— Low-back monotone leather-trimmed heated bucket with Red accent stitching and R/T logo					O
— Manually adjustable	•	•			
— Power 6-way driver's			•	•	•
ENTERTAINMENT SYSTEMS					
GAMING SYSTEM — Audio/visual input jacks located on back of center console (included with Rear Seat Video System)			P	P	P
RADIO					
— AM/FM radio and integrated 6-disc CD/DVD changer with MP3 auxiliary input jack (included with Premium Sound Group)			P	P	P
— MyGIG® Multimedia Infotainment System ⁽⁵⁾ with Navigation includes AM/FM radio, DVD/CD/MP3-compatible player and 20GB hard drive (includes UConnect®)			O	O	O

ENTERTAINMENT SYSTEMS (CONTINUED)

REAR SEAT VIDEO™ SYSTEM — DVD system includes headliner-mounted 8-inch screen, remote control and 2 wireless headsets (includes Gaming System; requires Premium Sound Group)

SPEAKERS — Premium Sound System with 9 speakers including a subwoofer and 368 watts of power (requires AM/FM radio and integrated 6-disc CD/DVD changer with MP3 capability and auxiliary input jack; included with Convenience Group or Premium Sound)

SAFETY AND SECURITY

PARKSENSE® REAR PARK ASSIST SYSTEM⁽⁶⁾ — Included with Convenience Group

SECURITY ALARM — Integrated vehicle alarm system (included with Travel Convenience Group)

TIRE PRESSURE MONITOR DISPLAY

TIRE PRESSURE MONITOR WARNING LAMP

UCONNECT — Voice-activated hands-free communication system; includes auto-dimming rearview mirror (included with Convenience Group or MyGIG® Multimedia Infotainment System with Navigation; requires Premium Sound System)

PACKAGES

CONVENIENCE GROUP — Includes Remote Start system, Premium Sound System, UConnect and ParkSense® Rear Park Assist System

PREMIUM SOUND GROUP — Includes Premium Sound System and AM/FM radio and integrated 6-disc CD/DVD changer with MP3 capability and auxiliary input jack

SMOKER'S GROUP — Includes removable ashtray and cigar lighter

TRAILER TOW GROUP — Includes a Class III receiver hitch, 4-pin wiring harness and full-size spare tire and Heavy-Duty Engine Cooling with automatics (included with Travel Convenience Group)

TRAVEL CONVENIENCE GROUP — Includes Trailer Tow Group and Security Alarm

• = Standard. P = Available within package noted. O = Optional.

⁽¹⁾ Always sit properly in the seat with the seat belt fastened. Always observe the passenger air bag indicator lamp to determine if the OCS classification is appropriate. Children 12 and under should always be in a backseat correctly using an infant or child restraint system, or the seat belt positioned correctly for the child's age and weight. ⁽²⁾ 4x4 models only. ⁽³⁾ No system, no matter how sophisticated, can repeal the laws of physics or overcome careless driving actions. Performance is limited by available traction, which snow, ice and other conditions can affect. When the ESP warning lamp in the speedometer flashes, the driver needs to use less throttle and adapt speed and driving behavior to prevailing road conditions. Always drive carefully, consistent with conditions. Always wear your seat belt. ⁽⁴⁾ Not compatible with aftermarket fabric-protecting coatings. ⁽⁵⁾ MyGIG in-dash DVD capability is not available in all states. See your dealer for details. ⁽⁶⁾ Always check entire surroundings before backing up.

	SXT		SLT		R/T
	B	C	F	G	L
				O	O
				P	P
	P	P	P	P	P
			•	•	•
	•	•			
				P	P
				O	O
				O	O
	P	P	P	P	P
	O	O	O	O	O



With Chrysler Financial, you can get great finance options, competitive rates and flexible payment plans. Learn more about your financing benefits and even submit a credit application at chryslerfinancial.com.



With the Dodge Rewards Visa credit card, you earn points for every purchase you make which can be redeemed for anything at your Chrysler, Jeep or Dodge dealership — all with no annual fee! Visit dodgecreditcard.com for more information on how to apply!



The only insurance guaranteed to repair your vehicle using Authentic Dodge Collision Repair Parts by Mopar for as long as you own your Dodge vehicle, and up to \$100 off your deductible when those repairs are done at a Dodge dealership — all at rates that are tough to beat. For a free quote, visit www.dodgeautoinsurance.com or call 800-836-1598 and mention keycode QL9XXX.



If your business relies on vehicles, Dodge BusinessLink can save you time, money and hassles. For more, log on to dodge.com/businesslink or call us toll-free at 877-2THE LINK (877-284-3546).



Enhance your Dodge Nitro with Authentic Dodge Accessories by Mopar. They're designed specifically for your vehicle, for exceptional fit, finish and performance. Visit your dealership or mopar.com.



The Dodge Goods catalog is a handpicked collection of items bearing the powerful Dodge name — from Motorsports apparel and collectible die-cast models to the latest in work and ranch wear. It's all found at dodge.com/goods. Call 877-789-DODGE (3634) for a free catalog.



Your Dodge is one of the best performing vehicles on the road. Why not protect your investment with a Chrysler Service Contract or Maintenance Plan? For more information, see your Dodge dealer, call 1-800-442-2666 or visit servicecontracts.chrysler.com.



SIRIUS Satellite Radio delivers over 130 channels including 100% commercial-free music, sports, news, talk, entertainment, traffic and weather. Factory-installed SIRIUS Satellite Radio includes a one-year subscription. For more information, go to sirius.com.



∞Infinity Sound Systems is a high quality global audio brand, providing musical accuracy and legendary speaker innovation. An industry leader in Audio Technology, Performance, and Design.



The 2008 Dodge Nitro includes a Lifetime Powertrain Limited Warranty. See dealer for a copy of limited warranty and details. No deductible. Non-Transferable. Not available on SRT, diesel and certain fleet vehicles.

3/36 LIMITED WARRANTY

All Dodge vehicles are covered by the Chrysler LLC 3-year/36,000-mile Basic Limited Warranty. See dealer for a copy of this limited warranty. Excludes normal maintenance and wear items.

About this catalog: Since the time of printing, some of the information you'll find in this catalog may have been updated. Ask your dealer for details. Some of the equipment shown or described throughout this catalog is available at extra cost. Specifications, descriptions, illustrative materials, and all competitive comparisons contained herein are as accurate as known at the time this publication was approved for printing. Chrysler LLC reserves the right to discontinue models at any time or change specifications without notice or without incurring obligation. All options are required in combination with other options. For the price of the model with the equipment you desire, or verification of specifications contained here, see your Dodge dealer. Dodge, HomeLink, Load 'N Go, Mopar, MyGIG, Sentry Key and UConnect are registered trademarks of Chrysler LLC. DVD Rear Seat Video is a trademark of Chrysler LLC. "SIRIUS" and the SIRIUS dog logo are registered trademarks of SIRIUS Satellite Radio Inc. "NFL" is a registered trademark of the National Football League. "NBA" is a registered trademark of NBA Properties, Inc. NASCAR® is a registered trademark of the National Association for Stock Car Auto Racing, Inc. All other trademarks, service marks and logos are the property of their respective owners. All rights reserved. For full terms and conditions, visit sirius.com. Prices and programming are subject to change. Not available in AK and HI. Insurance is underwritten by member companies of American International Group, Inc. ∞Infinity is a registered trademark of Harmon International Industries, Inc. YES Essentials is a registered trademark of Milliken & Company. iPod and the iPod design are registered trademarks of Apple Computers Inc.

