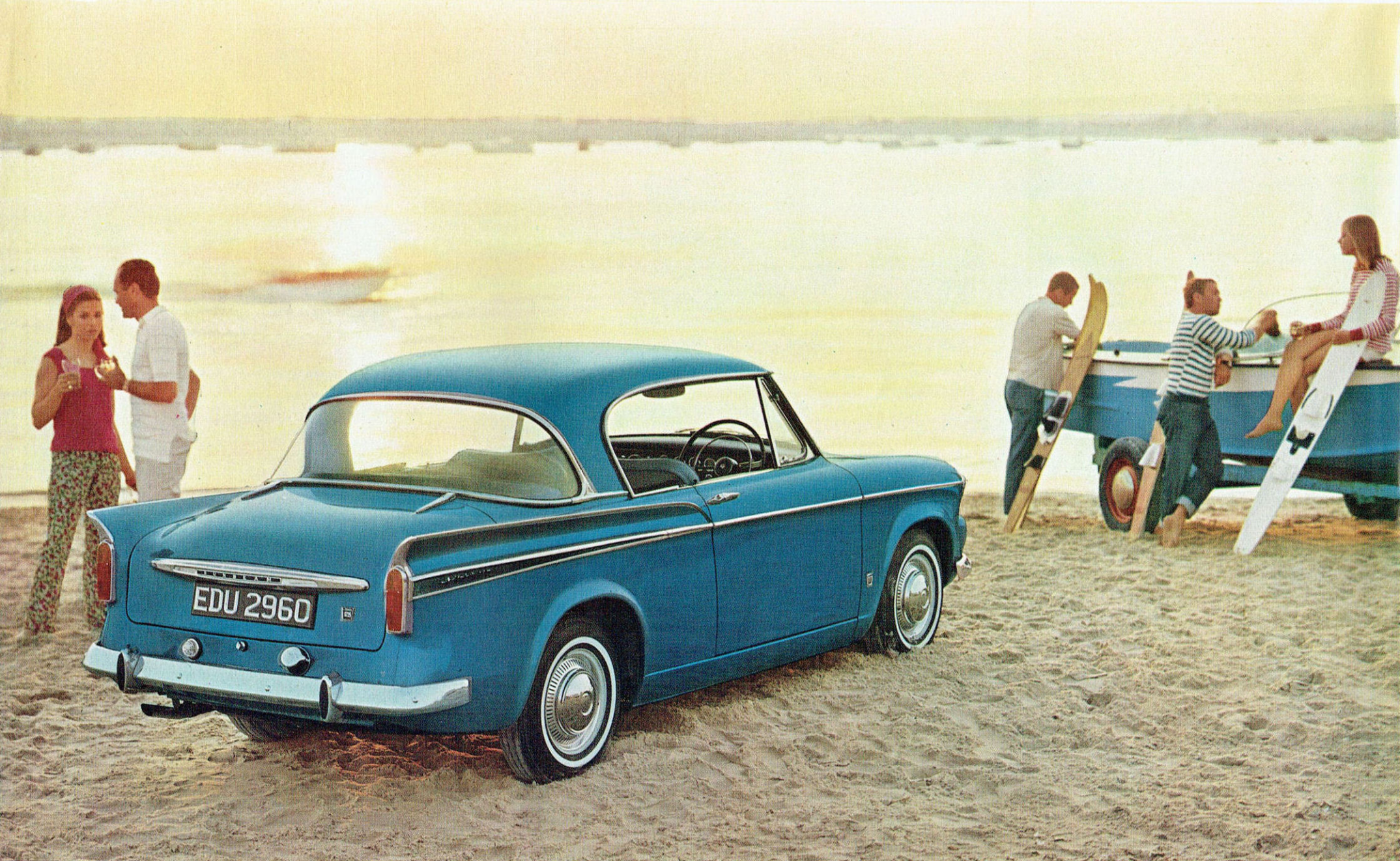




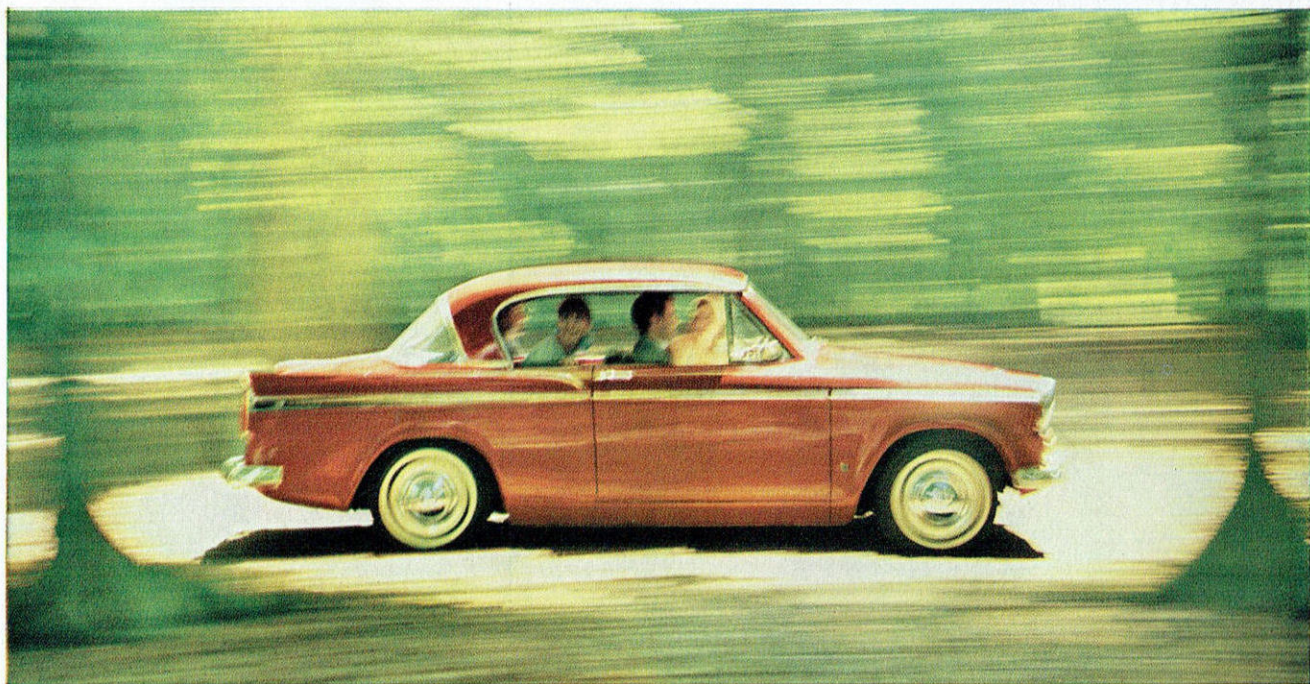
POWER... AND EXCITING PERFORMANCE  
**SUNBEAM RAPIER**





Overriders and rimfinishers are standard. White-wall tyres are available as an extra.





## SPORTS PERFORMANCE · LUXURY COMFORT

Sunbeam Rapier is the thrilling sports saloon with the exciting specification, famed for its outstanding successes in international trials and rallies. Designed and equipped to luxury standards, the Sunbeam Rapier brings the zest of keen sports performance to everyday motoring. It is an easy car to handle and control, highly responsive and manoeuvrable and docile in traffic. Rally-proved suspension gives firm road-grip and stability – servo-assisted braking and front disc brakes ensure safe, sure stopping power.

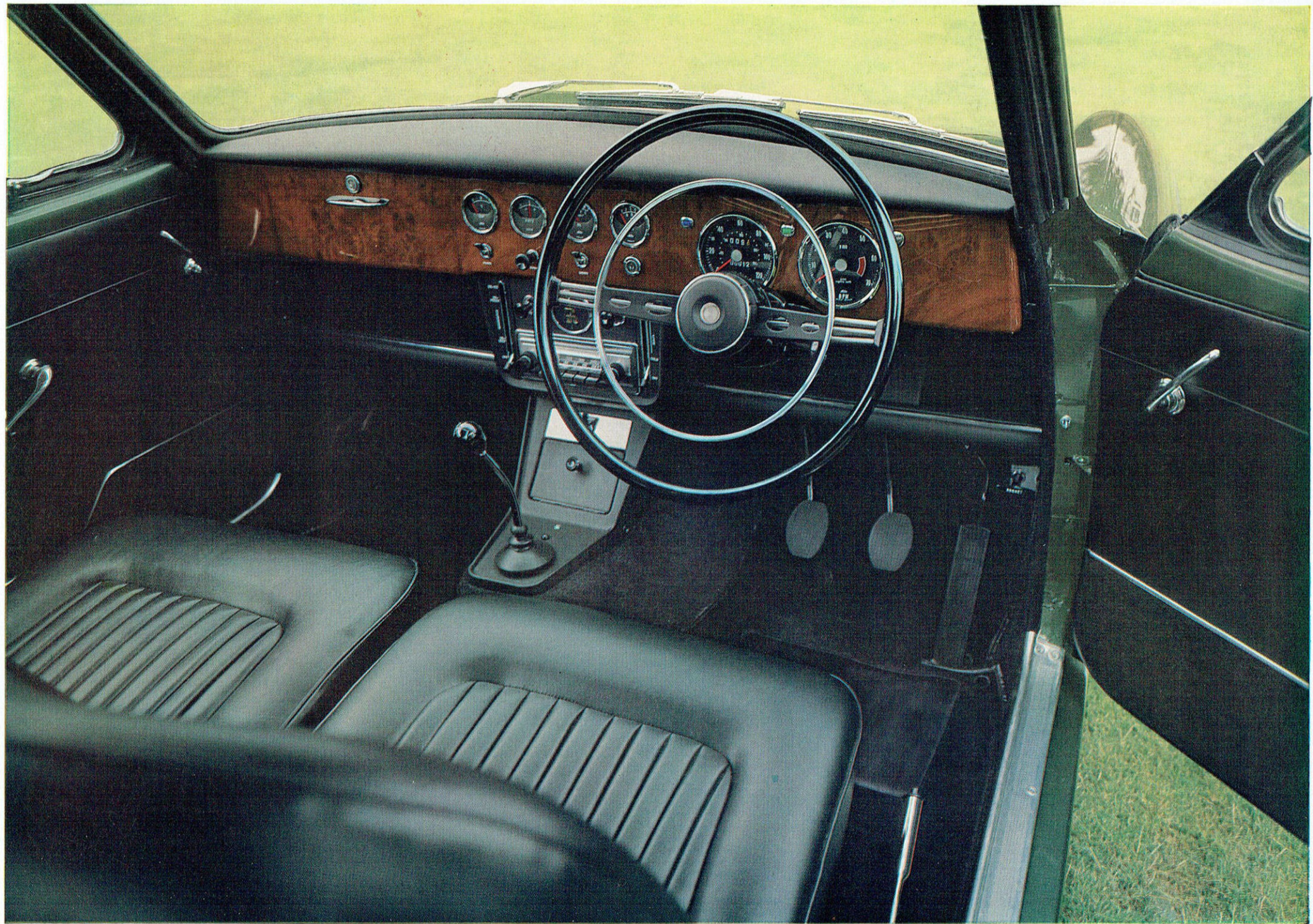
You also enjoy many other advantages with a Sunbeam Rapier. A roomy, comfortable interior, with fully adjustable front seats. Excellent all-round visibility. Windows and rear quarter-lights that wind down for 'open-air' travel. A steering wheel with telescopic adjustment. A full range of instruments, lavish equipment and amenities. And traditional Sunbeam quality engineering and finish.

For the most advanced and exclusive features, choose a Sunbeam Rapier!











## **Rally experts designed this driving position**

You drive relaxed, with steering wheel and seat adjustable for leg-room and reach. The steering unit is of high-efficiency design and a sports-type gear lever ensures swift, positive changes. All the controls are within easy reach. The stylish panel in walnut veneer and a console panel incorporate a full range of instruments, with clear vertical markings.

Standard equipment on the Sunbeam Rapier includes: revolution counter and speedometer; headlamp flasher incorporated in flashing indicator switch; gauges for ammeter, oil pressure, water temperature and fuel; toggle switches for lights and panel light; two-speed windscreen wipers, windscreen washers; choke control; latest-type pedal controls and cigarette lighter.

On the passenger side of the fascia, there is a lockable glove box. The parcels shelf, sun visors and driving mirror are all padded for safety. Provision is made for fitting a heater, radio and clock as extras. Overdrive is also available as an extra.

**To complete your enjoyment** you travel in an elegant, luxurious interior – a roomy 4/5 seater. Appointments and finish are of the highest quality. The deep, wide seats are extremely comfortable – they have foam rubber cushioning and stylish trim. The individual front seats have fore-and-aft adjustments of 5 inches and a rake adjustment of the squab. They tilt forward to give access to the rear compartment. The rear seats have comfortably shaped arm-rests.

The floor is fully carpeted. A ventilation system is built in and a heater is available as an extra. Seat belt anchorages are built in.

That's why the Sunbeam Rapier is so remarkably easy to handle and control, so safe and *comfortable*. Visibility is superb.













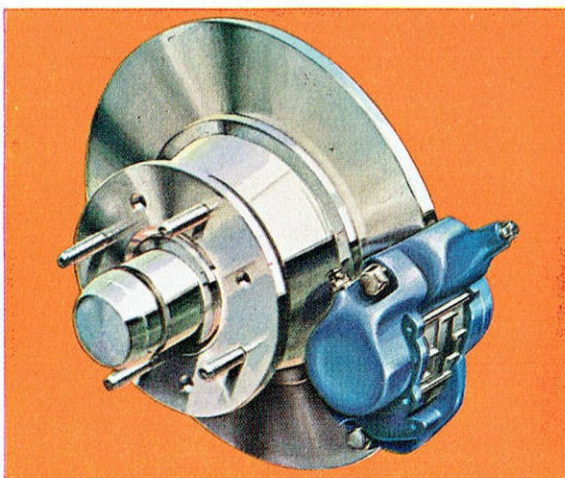


## The low sleek lines

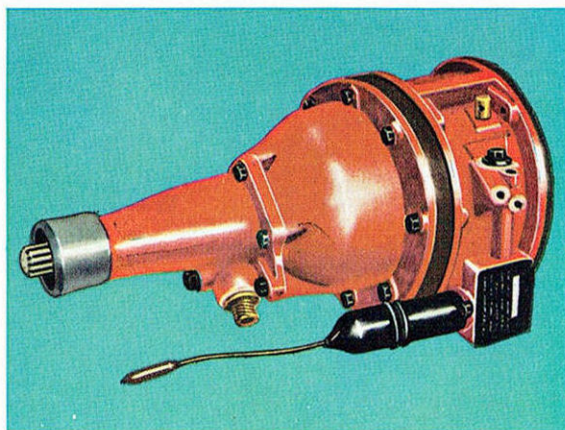
of the Sunbeam Rapier accentuate power and speed.

This is a car designed in the Sunbeam sports tradition – functional and elegant. Maximum visibility is assured by large-area windows, a deep front screen and a fully wrapped-round rear screen.

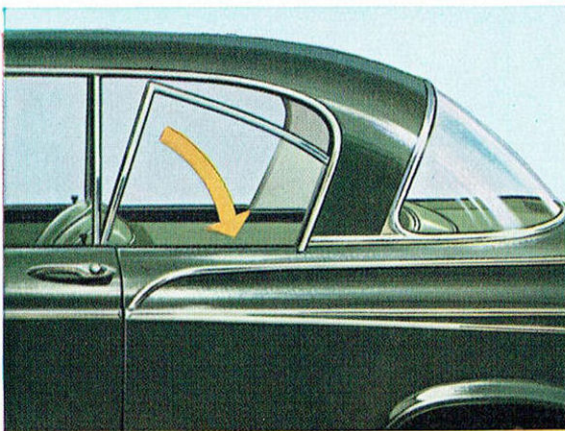
Sunbeam Rapier is the ideal car for long-distance touring. There's room for all your luggage in the spacious boot, weather-sealed for protection. The floor and sides of the compartment are fully covered to protect luggage from damage. The spare wheel, easily accessible, is held behind a matching trimmed cover.



The braking system is servo-assisted. Only light pedal pressure is needed for powerful, smooth, safe braking. The front wheels are fitted with fade-resistant disc brakes. These are matched with self-adjusting large-area drum brakes on the rear wheels. This is a perfect combination, proved for efficiency at all speeds.



Laycock-de Normanville overdrive is available as an extra. It operates on top and third gears and improves still further the excellent performance, whilst economizing on fuel. Overdrive is engaged by flicking a switch on the steering column.



With the side windows and rear quarter-lights right down you have almost an open car. With the windows closed, you travel in a comfortable, draughtproof saloon. The front no-draught quarter-lights are adjustable, and are now fitted with automatic anti-theft locks.



# Rally-bred 1725 c.c. O.H.V. engine

## Some advanced features

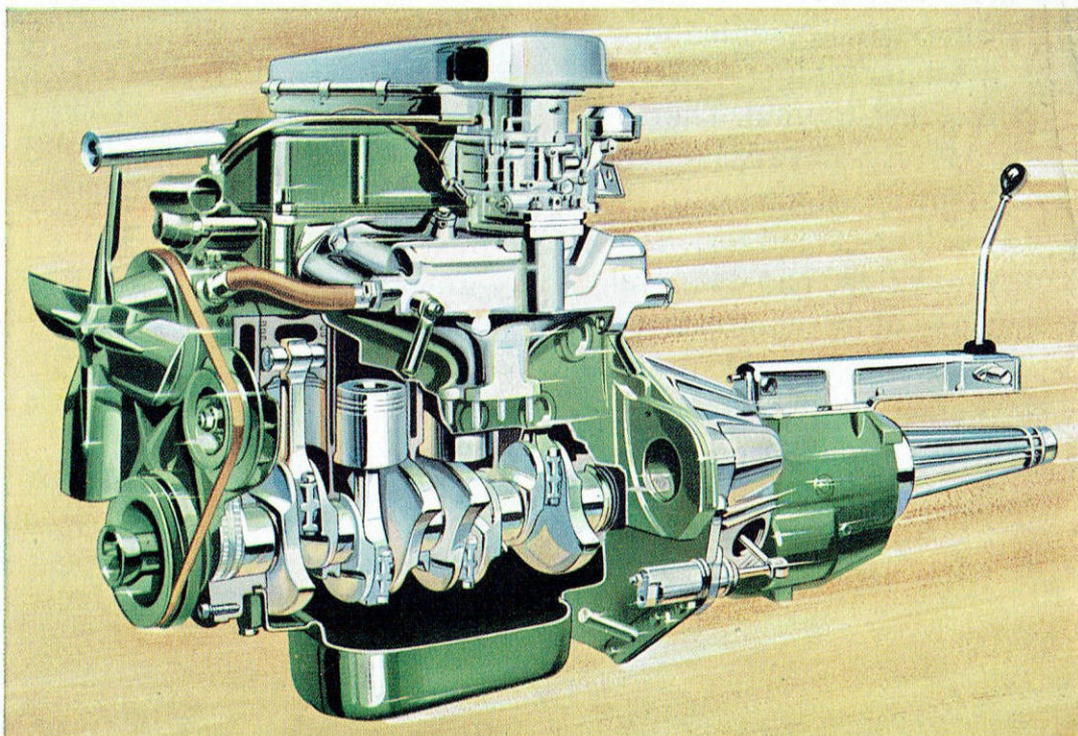
- *5-bearing crankshaft* for smooth, quiet running
- *Rigid cylinder block* for reliability and long life
- *Aluminium cylinder head* for maximum thermal efficiency
- *Large inlet and exhaust valves* for peak performance
- *Special water-heated aluminium cast inlet manifold*
- *Twin outlet exhaust manifold* and large resonator box to match power
- *Compound carburettor* giving twin carburettor performance with strangler operation for improved 'cold' starting
- *Air cleaner* with oil-impregnated element
- *35-amp alternator* (replacing dynamo) for higher charging rate at low revolutions
- *Fan and vertical flow radiator* for efficient cooling
- *Self-adjusting diaphragm clutch* that needs only light pedal pressure
- *Sports-type 4-speed all-synchromesh gearbox* for smooth, swift changes in all gears

The powerful Sunbeam Rapier engine was evolved from long experience in international sporting events. It is a compact, precision-built unit of advanced 'square' design and high efficiency, thoroughly proved for reliability and economy.

Performance is brilliant throughout the speed range, with swift acceleration in top and through the gears, thrusting power for climbs, and effortless power for sustained cruising. Top speeds are over 95 m.p.h.

B.h.p. is 91 at 5,500 r.p.m. Maximum torque is 105.9 lb.ft. at 3,500 r.p.m. Compression ratio is 9.2:1.

All greasing points are eliminated on the Sunbeam Rapier. Routine servicing is required only every 6,000 miles.





# Specification of the Sunbeam Rapier Sports Saloon

**Engine.** Four-cylinder five bearing crankshaft unit with aluminium cylinder head and push rod operated overhead valves. Twin-choke Solex compound carburettor.

Bore and Stroke: 3.21×3.25 in. (81.5×82.55 mm.).

Cubic Capacity 105.2 cu. in. (1,725 c.c.).

Engine develops maximum B.H.P. 91 at 5,500 r.p.m. with compression ratio of 9.2:1.

**Ignition.** Coil and distributor. Automatic advance and retard and vacuum control. Champion N9Y sparking plugs.

**Cooling System.** Centrifugal pump and four-bladed fan. Special selective cooling jets on hottest parts. Thermostatic control for quick warm-up.

**Clutch.** 7½ in. (191 mm.) Borg and Beck with diaphragm spring. Hydraulic operation from pendant pedal.

**Gearbox.** Proved four-speed gearbox. Control ring synchromesh on all forward gears and centre-floor gear change lever.

**Rear Axle.** Semi-floating design with Hypoid final drive. Ratio 3.89:1, Overall Ratios: Top 3.89:1, Third 5.413:1, Second 8.324:1, First 13.04:1, Reverse 13.88:1.

**Unitary Construction** of chassis and body gives exceptional strength and rigidity.

**Front Suspension.** Fully independent front wheel suspension employing silico-manganese coil springs and swinging links. All greasing points eliminated. Suspension control by means of high capacity telescopic shock absorbers housed neatly down the centre of each coil spring. A torsion bar sway eliminator is fitted between lower links of suspension.

**Rear Suspension.** Semi-elliptic leaf springs with automatic variation to suit load and road surface. Telescopic shock absorbers maintain complete control under all conditions.

**Wheels.** Five pressed steel wheels with wide base rims. Four wheels embellished with polished nave plates and wheel trim discs. Spare wheel held vertically in well on right-hand side of luggage compartment.

**Tyres.** Tubeless 6.00×13 in. Nylon cord.

**Brakes.** Lockheed hydraulic system with servo assistance. Front disc brakes 10.3 in. (261 mm.) diameter. Rear 9 in. (229 mm.) diameter brake drums. Total swept area: 298 sq. in. (19.23 dm<sup>2</sup>). Handbrake operates mechanically on rear wheels, the lever being in a horizontal position adjacent to the driver's seat.

**Steering.** Burman recirculating ball type. Three piece symmetrical track rod linkage with no greasing points. 15½ in. (394 mm.) diameter steering wheel with 2½ in. (64 mm.) telescopic adjustment is fitted with chromium-plated horn-ring.

Left or Right-hand drive available according to market requirements.

**Petrol Tank.** 10 gallon (45 litres) capacity positioned below luggage compartment floor.

**Instruments.** Speedometer including mileage and trip recorder; revolution counter, thermometer, oil pressure gauge, fuel gauge, ammeter and warning lights for headlamp beam, ignition and flashing indicators.

**Weight (approx.)**

Unladen (with petrol and water) 2,314 lb. (1,050 kg.).

Dry (without petrol and water) 2,223 lb. (1,008 kg.).

## COLOUR SCHEMES

### Single Tone

Royal Blue Metallic with Grey upholstery.

Laurel Green Metallic with Green upholstery.

### Two Tones

The first named colour is the predominant body colour and the second is the roof and side flash.

Autumn Gold Metallic/Embassy Black with Black upholstery.

Silver Grey Metallic/Embassy Black with Black upholstery.

The first named colour is the body and roof and the second is the side flash only.

Lagoon Blue Metallic/Embassy Black with Black upholstery.

Sherwood Green Metallic/Embassy Black with Black upholstery.

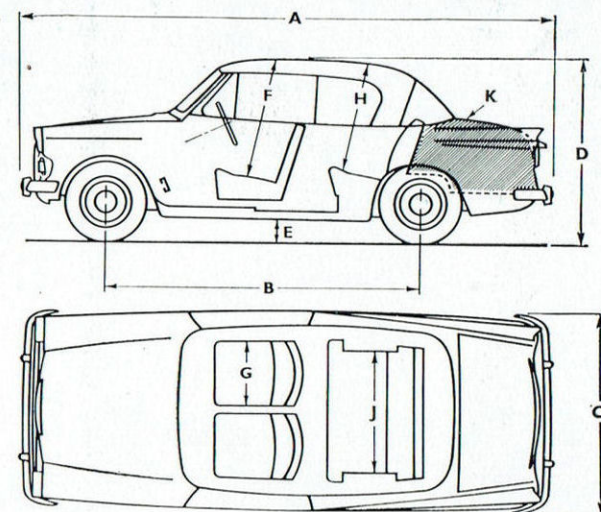
Silver Grey Metallic/Pippin Red with Red upholstery.

Pippin Red/Embassy Black with Black upholstery.

**Optional Extras.** The following extras are available ex factory at extra cost and can only be specified at the time of placing the order: Radio, heater, overdrive and white-wall tyres.

**Special Accessories** (available at extra cost). An attractive range of accessories is available. Full details may be obtained from your Rootes Dealer.

The Company reserves the right to alter the specification at any time, without notice, and all goods are sold subject to the Manufacturer's Conditions of Export Sale.



## DIMENSIONS

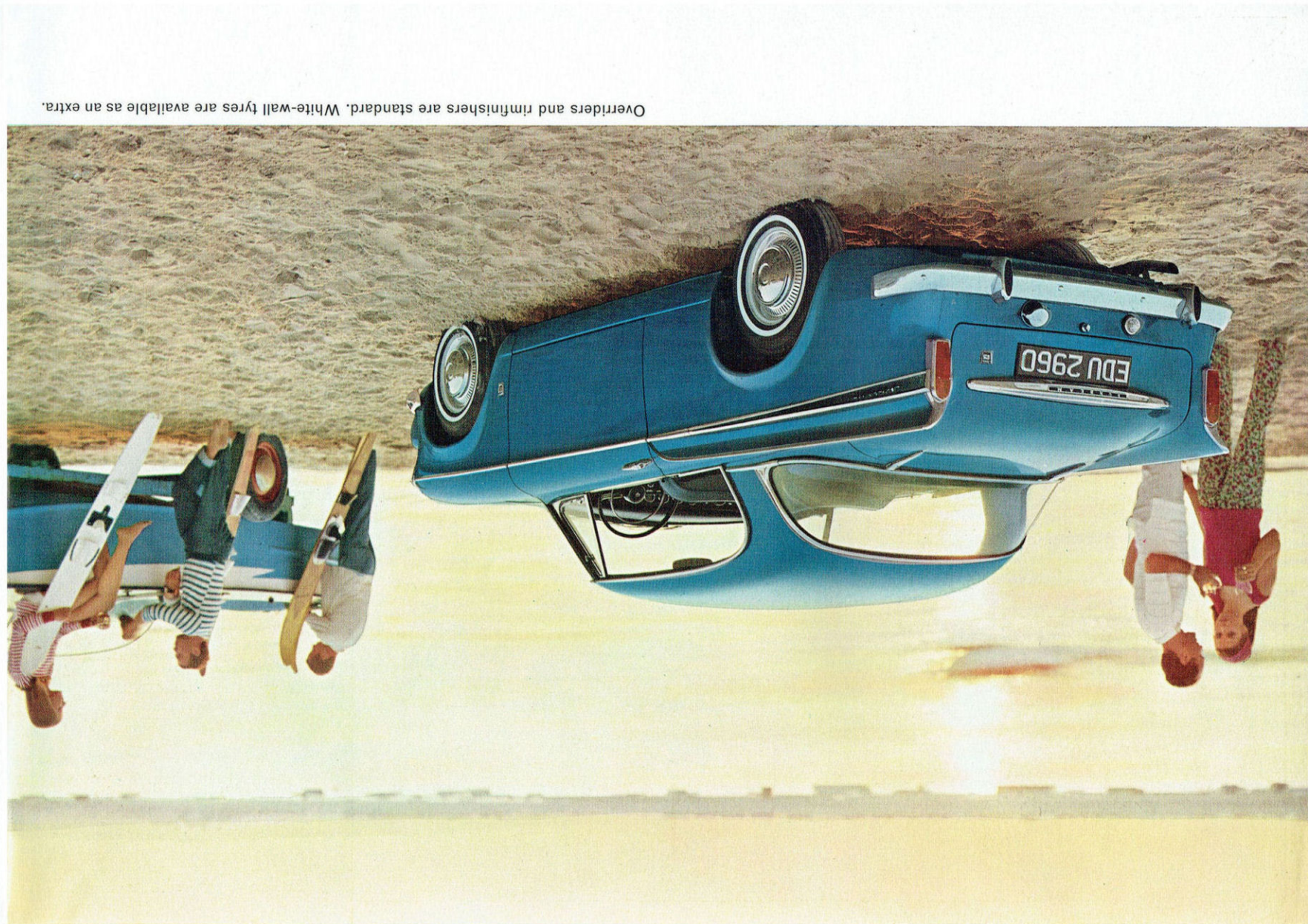
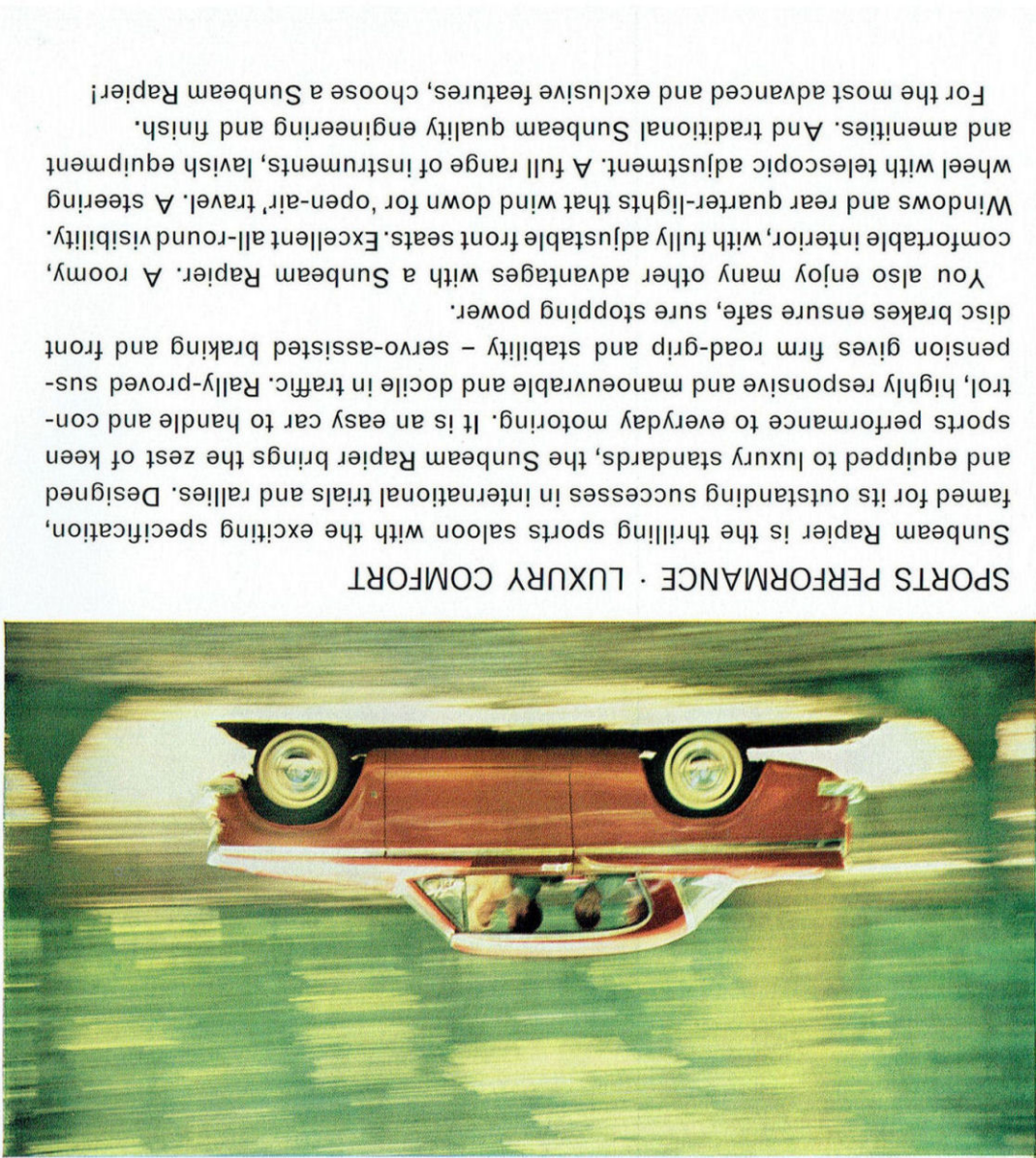
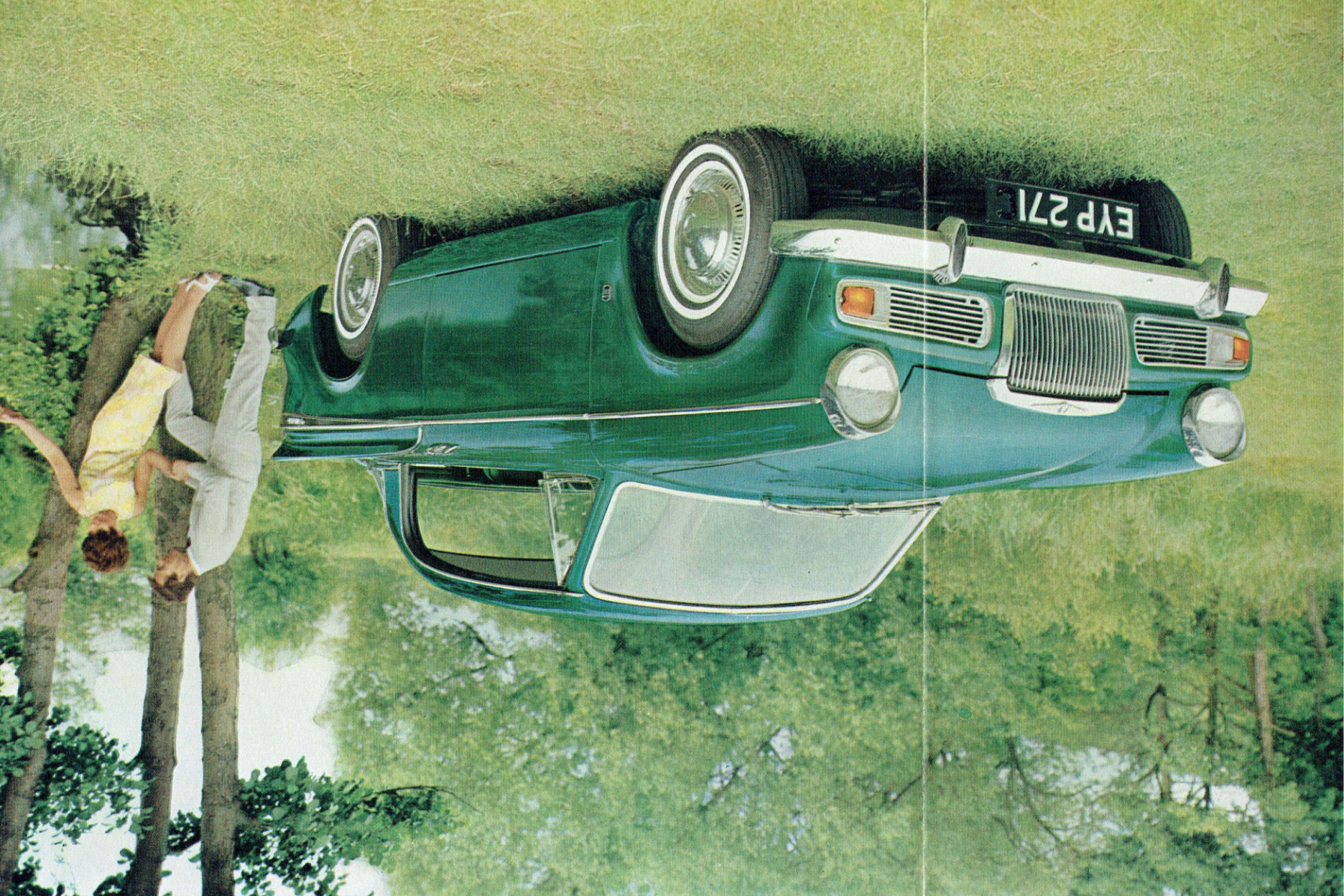
		in.	m.
<b>A</b>	Overall Length	163½	4.146
<b>B</b>	Wheelbase	96	2.438
<b>C</b>	Overall Width	60½	1.543
<b>D</b>	Overall Height	57¼	1.454
<b>E</b>	Ground Clearance		
	(Laden)	5½	0.140
<b>F*</b>	Front Seat Headroom (max)	40½	1.029
<b>G</b>	Front Seat Width	21	0.533
<b>H*</b>	Rear Seat Headroom	34½	0.876
<b>J</b>	Rear Seat Width	40½	1.035
<b>K</b>	Luggage Compartment		
	Capacity	13½ cu.ft.	0.382 cu.m.
	Front Track	51½	1.314
	Rear Track	48½	1.232
	Turning Circle	36 ft.	10.973

\* Dimensions **F** and **H** include approximately 2 in. (51 mm) for cushion compression.

ROOTES MOTORS OVERSEAS LTD. · P.O. BOX 2BU  
DEVONSHIRE HOUSE · PICCADILLY · LONDON · W1  
Sales and Service in 163 Countries







Overriders and rimfinishers are standard. White-wall tyres are available as an extra.

### SPORTS PERFORMANCE · LUXURY COMFORT

### Specification of the Sunbeam Rapier Sports Saloon

**Engine.** Four-cylinder five bearing crankshaft unit with aluminium cylinder head and push rod operated overhead valves. Twin-choke Solex compound carburettor.  
Bore and Stroke: 3·21×3·25 in. (81·5×82·55 mm.).  
Cubic Capacity 105·2 cu. in. (1,725 c.c.).  
Engine develops maximum B.H.P. 91 at 5,500 r.p.m. with compression ratio of 9·2:1.

**Ignition.** Coil and distributor. Automatic advance and retard and vacuum control. Champion N9Y sparking plugs.

**Cooling System.** Centrifugal pump and four-bladed fan. Special selective cooling jets on hottest parts. Thermostatic control for quick warm-up.

**Clutch.** 7½ in. (191 mm.) Borg and Beck with diaphragm spring. Hydraulic operation from pendant pedal.

**Gearbox.** Proved four-speed gearbox. Control ring synchromesh on all forward gears and centre-floor gear change lever.

**Rear Axle.** Semi-floating design with Hypoid final drive, Ratio 3·89:1, Overall Ratios: Top 3·89:1, Third 5·413:1, Second 8·324:1, First 13·04:1, Reverse 13·88:1.

**Unitary Construction** of chassis and body gives exceptional strength and rigidity.

**Front Suspension.** Fully independent front wheel suspension employing silico-manganese coil springs and swinging links. All greasing points eliminated. Suspension control by means of high capacity telescopic shock absorbers housed neatly down the centre of each coil spring. A torsion bar sway eliminator is fitted between lower links of suspension.

**Rear Suspension.** Semi-elliptic leaf springs with automatic variation to suit load and road surface. Telescopic shock absorbers maintain complete control under all conditions.

**Wheels.** Five pressed steel wheels with wide base rims. Four wheels embellished with polished nave plates and wheel trim discs. Spare wheel held vertically in well on right-hand side of luggage compartment.

**Tyres.** Tubeless 6·00×13 in. Nylon cord.

**Brakes.** Lockheed hydraulic system with servo assistance. Front disc brakes 10·3 in. (261 mm.) diameter. Rear 9 in. (229 mm.) diameter brake drums. Total swept area: 298 sq. in. (19·23 dm²). Handbrake operates mechanically on rear wheels, the lever being in a horizontal position adjacent to the driver's seat.

**Steering.** Burman recirculating ball type. Three piece symmetrical track rod linkage with no greasing points. 15½ in. (394 mm.) diameter steering wheel with 2½ in. (64 mm.) telescopic adjustment is fitted with chromium-plated horn-ring.  
Left or Right-hand drive available according to market requirements.

**Petrol Tank.** 10 gallon (45 litres) capacity positioned below luggage compartment floor.

**Instruments.** Speedometer including mileage and trip recorder; revolution counter, thermometer, oil pressure gauge, fuel gauge, ammeter and warning lights for headlamp beam, ignition and flashing indicators.

**Weight (approx.)**  
Unladen (with petrol and water) 2,314 lb. (1,050 kg.).  
Dry (without petrol and water) 2,223 lb. (1,008 kg.).

**COLOUR SCHEMES**  
**Single Tone**  
Royal Blue Metallic with Grey upholstery.  
Laurel Green Metallic with Green upholstery.

**Two Tones**  
The first named colour is the predominant body colour and the second is the roof and side flash.  
Autumn Gold Metallic/Embassy Black with Black upholstery.  
Silver Grey Metallic/Embassy Black with Black upholstery.

The first named colour is the body and roof and the second is the side flash only.  
Lagoon Blue Metallic/Embassy Black with Black upholstery.  
Shorwood Green Metallic/Embassy Black with Black upholstery.  
Silver Grey Metallic/Pippin Red with Red upholstery.  
Pippin Red/Embassy Black with Black upholstery.

**Optional Extras.** The following extras are available ex factory at extra cost and can only be specified at the time of placing the order: Radio, heater, overdrive and white-wall tyres.

**Special Accessories** (available at extra cost). An attractive range of accessories is available. Full details may be obtained from your Rootes Dealer.

DIMENSIONS			
		in.	m.
<b>A</b>	Overall Length	.. .. 163½	4·146
<b>B</b>	Wheelbase	.. .. 96	2·438
<b>C</b>	Overall Width	.. .. 60½	1·543
<b>D</b>	Overall Height	.. .. 57½	1·454
<b>E</b>	Ground Clearance		
	(Laden)	.. .. 5½	0·140
<b>F*</b>	Front Seat Headroom (max)	40½	1·029
<b>G</b>	Front Seat Width	.. .. 21	0·533
<b>H*</b>	Rear Seat Headroom	.. 34½	0·876
<b>J</b>	Rear Seat Width	.. .. 40½	1·035
<b>K</b>	Luggage Compartment		
	Capacity	.. .. 13½ cu.ft.	0·382 cu.m.
	Front Track	.. .. 51½	1·314
	Rear Track	.. .. 48½	1·232
	Turning Circle	.. .. 36 ft.	10·973

\* Dimensions **F** and **H** include approximately 2 in. (51 mm) for cushion compression.

ROOTES MOTORS OVERSEAS LTD. · P.O. BOX 28U  
DEVONSHIRE HOUSE · PICCADILLY · LONDON · W1  
Sales and Service in 163 Countries

### Rally-bred 1725 c.c. O.H.V. engine

### Some advanced features

- 5-bearing crankshaft for smooth, quiet running
- Rigid cylinder block for reliability and long life
- Aluminium cylinder head for maximum thermal efficiency
- Large inlet and exhaust valves for peak performance
- Special water-heated aluminium cast inlet manifold
- Twin outlet exhaust manifold and large resonator box to match power
- Compound carburettor giving twin carburettor performance with strangler operation for improved 'cold' starting
- Air cleaner with oil-impregnated element
- 35-amp alternator (replacing dynamo) for higher charging rate at low revolutions
- Fan and vertical flow radiator for efficient cooling
- Self-adjusting diaphragm clutch that needs only light pedal pressure
- Sports-type 4-speed all-synchromesh gearbox for smooth, swift changes in all gears

Ref. 7830R/EX/RHD, LHD  
Printed in England by Letterpress L.H.

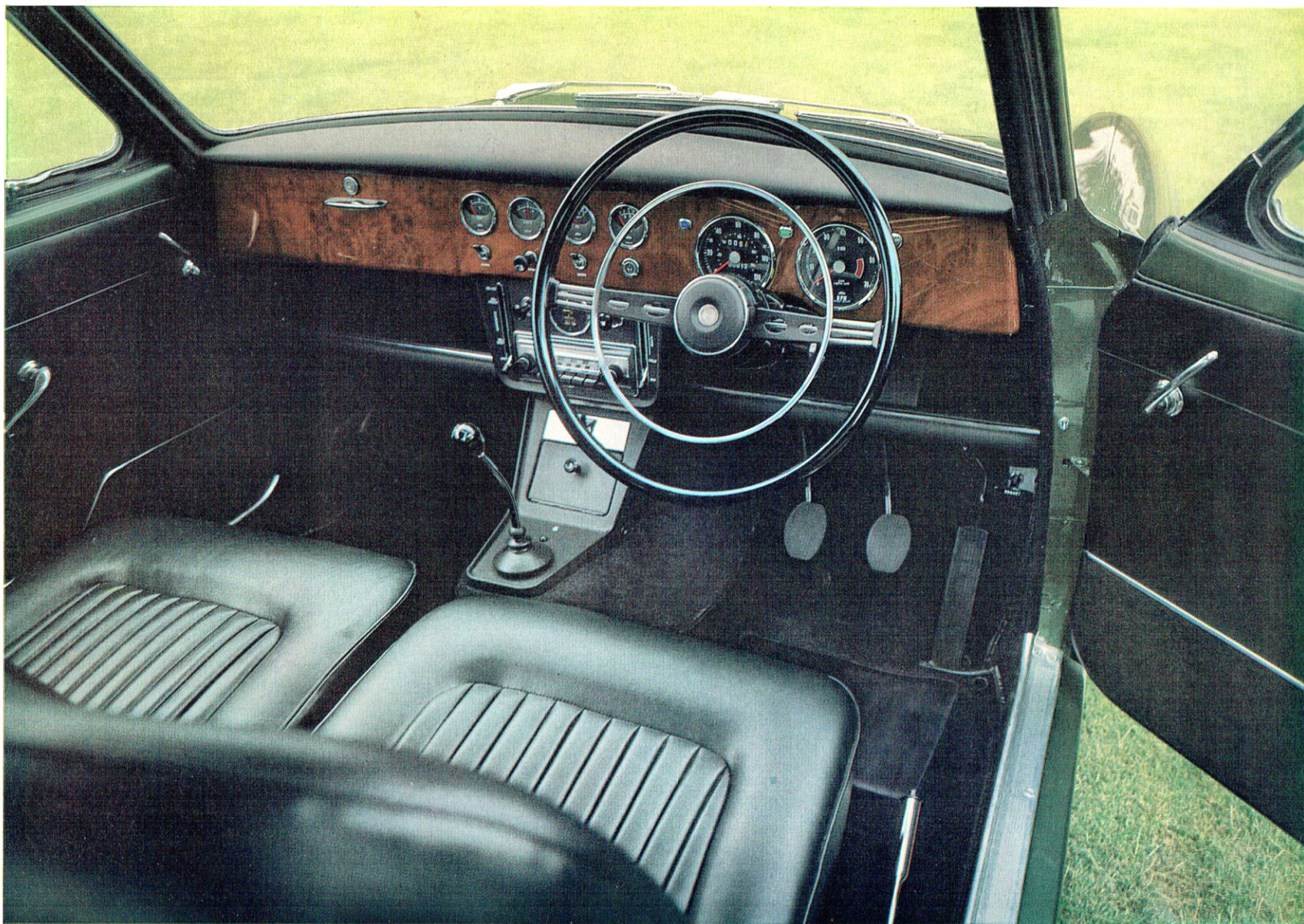
6/17/5

POWER... AND EXCITING PERFORMANCE

# SUNBEAM RAPIER







## Rally experts designed this driving position

You drive relaxed, with steering wheel and seat adjustable for leg-room and reach. The steering unit is of high-efficiency design and a sports-type gear lever ensures swift, positive changes. All the controls are within easy reach. The stylish panel in walnut veneer and a console panel incorporate a full range of instruments, with clear vertical markings.

Standard equipment on the Sunbeam Rapier includes: revolution counter and speedometer; headlamp flasher incorporated in flashing indicator switch; gauges for ammeter, oil pressure, water temperature and fuel; toggle switches for lights and panel light; two-speed windscreen wipers, windscreen washers; choke control; latest-type pedal controls and cigarette lighter.

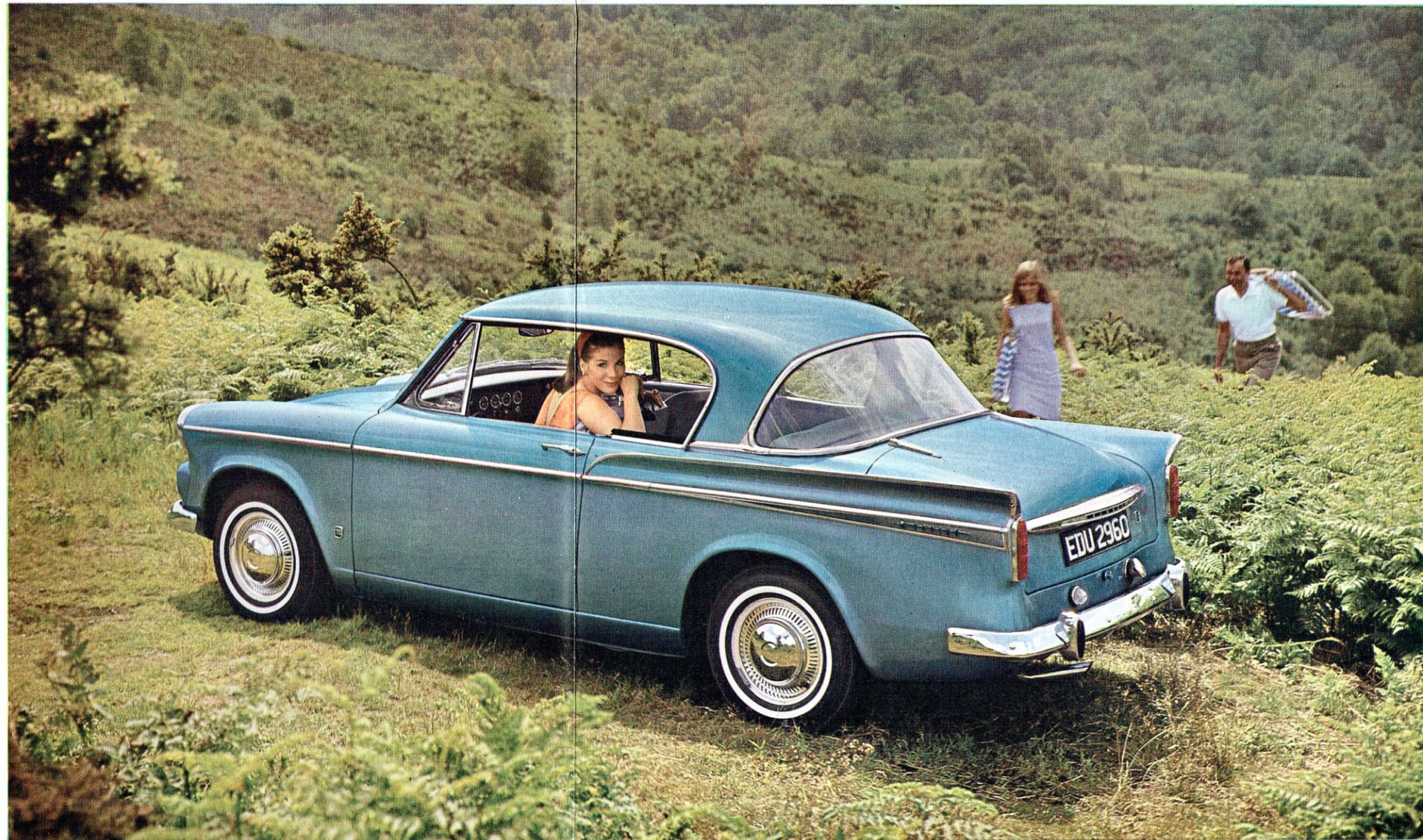
On the passenger side of the facia, there is a lockable glove box. The parcels shelf, sun visors and driving mirror are all padded for safety. Provision is made for fitting a heater, radio and clock as extras. Overdrive is also available as an extra.

That's why the Sunbeam Rapier is so remarkably easy to handle and control, so safe and comfortable. Visibility is superb.

## To complete your enjoyment

you travel in an elegant, luxurious interior – a roomy 4/5 seater. Appointments and finish are of the highest quality. The deep, wide seats are extremely comfortable – they have foam rubber cushioning and stylish trim. The individual front seats have fore-and-aft adjustments of 5 inches and a rake adjustment of the squab. They tilt forward to give access to the rear compartment. The rear seats have comfortably shaped arm-rests.

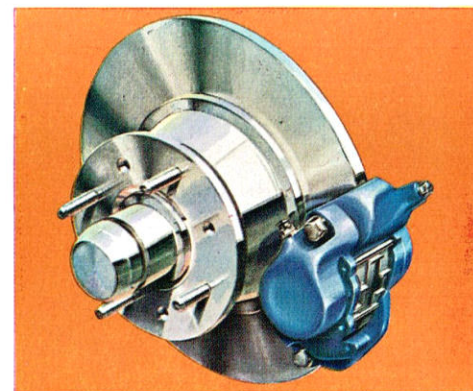
The floor is fully carpeted. A ventilation system is built in and a heater is available as an extra. Seat belt anchorages are built in.



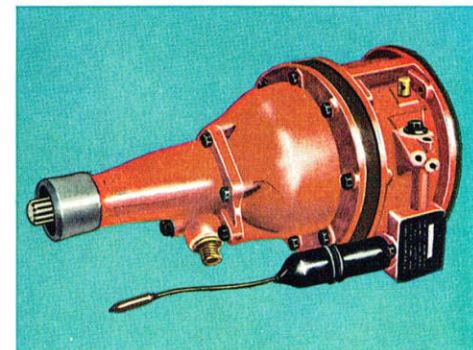
## The low sleek lines

of the Sunbeam Rapier accentuate power and speed.

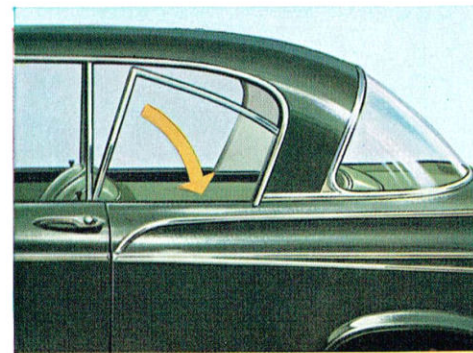
This is a car designed in the Sunbeam sports tradition – functional and elegant. Maximum visibility is assured by large-area windows, a deep front screen and a fully wrapped-round rear screen. Sunbeam Rapier is the ideal car for long-distance touring. There's room for all your luggage in the spacious boot, weather-sealed for protection. The floor and sides of the compartment are fully covered to protect luggage from damage. The spare wheel, easily accessible, is held behind a matching trimmed cover.



The braking system is servo-assisted. Only light pedal pressure is needed for powerful, smooth, safe braking. The front wheels are fitted with fade-resistant disc brakes. These are matched with self-adjusting large-area drum brakes on the rear wheels. This is a perfect combination, proved for efficiency at all speeds.



Laycock-de Normanville overdrive is available as an extra. It operates on top and third gears and improves still further the excellent performance, whilst economizing on fuel. Overdrive is engaged by flicking a switch on the steering column.



With the side windows and rear quarter-lights right down you have almost an open car. With the windows closed, you travel in a comfortable, draughtproof saloon. The front no-draught quarter-lights are adjustable, and are now fitted with automatic anti-theft locks.