



INTRODUCING THE ALL-NEW  
**2002 EXPLORER**  
THE NEXT TERRITORY



**NO BOUNDARIES**  
FORD OUTFITTERS 

## Introducing the All-New 2002 Explorer.

Today A Benchmark.

Tomorrow A Bandwagon.

The world's best-selling SUV is completely new.

This year, it's measurably quieter, smoother, stronger, larger, wider, more capable with more available power and yet...less expensive to maintain.

It's also designed to be the safest Explorer yet.

Optional Third Seat



Explorer can seat up to seven with the optional third row seat. If you don't order the third row seat, it boasts up to an impressive 88 cu. ft. of cargo space when the second row seats are folded forward.

### COMPARE FEATURES TO DISCOVER WHICH EXPLORER IS RIGHT FOR YOU:

EXPLORER XLS



#### EXPLORER XLS

- 4.0L SOHC V6 (5-speed manual O/D transmission)
- Independent Rear Suspension
- Electronic AM/FM Stereo/Clock/Cassette
- Cloth Captain's Chairs
- Remote Keyless Entry
- Air Conditioning
- Cargo Management System
- Power Equipment Group
- Speed Control/Tilt Steering
- Securilock™ Passive Anti-Theft System
- Rear Wiper/Washer/Defroster

XLS SPORT GROUP



#### EXPLORER XLS SPORT GROUP

Includes the standard features of Explorer XLS plus:

- Electronic AM/FM Stereo/Clock/Single Cd Player
- High Series Floor Console
- Floor Mats (front/rear)
- Side Step Bar
- Wheel Lip Moldings
- 16" Cast Aluminum Wheels

EXPLORER XLT



#### EXPLORER XLT

Includes the standard features of Explorer XLS plus:

- 4.0L SOHC V6 (5-speed automatic O/D transmission)
- Cloth Sport Bucket Seats
- Electronic AM/FM Stereo/Single CD Player
- High Series Floor Console
- Cargo Shade
- Keyless Entry Keypad/Autolock
- 16" Cast Aluminum Wheels
- Approach Lamps
- Roof Rails w/Crossbars
- Outside Temperature/Compass Display
- Illuminated Vanity Mirrors

EDDIE BAUER



#### EXPLORER EDDIE BAUER

Includes the standard features of Explorer XLT plus:

- Heated Luxury Leather-Trimmed Bucket Seats
- 16" Satin Nickel Cast Aluminum Wheels
- Fog Lamps
- HomeLink®
- 290-watt AM/FM Stereo Clock/6-disc In-Dash CD Player
- Adjustable Pedals w/Memory
- Dual Electronic Automatic Temperature Control
- Leather-Wrapped Tilt Steering Wheel
- Heated Exterior Mirrors
- Electrochromatic Rearview Mirror

LIMITED

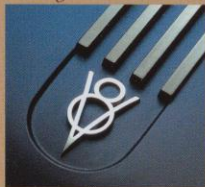


#### EXPLORER LIMITED

Includes the standard features of Explorer Eddie Bauer plus:

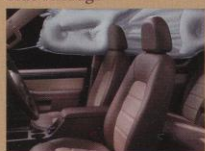
- 16" Limited Cast Aluminum Wheels
- Exclusive Color/Trim Combinations

#### V-8 Engine



Explorer's new available aluminum, 4.6-liter SOHC V-8 engine delivers enough power to pull up to 7300 pounds when properly equipped. The standard 4.0L SOHC V6 can haul up to 5940 pounds of boat and trailer. No slouches here.

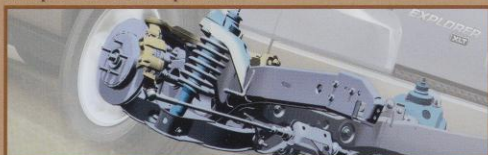
#### Side Airbags



Explorer raises safety to a new level—right about shoulder-level, in fact—with optional side curtain airbags. Deploying in selective conditions to help protect outboard passengers heads in side impact accidents, they cover about 63 percent of the side glass area. Remember to always wear your safety belt and secure children in the rear seat.

Vehicles shown may include optional equipment.

#### Independent Rear Suspension



#### THE 2002 EXPLORER. WHO SAYS ROUGHING IT SHOULD HAVE ANYTHING TO DO WITH DRIVING?

Explorer now has independent rear suspension rather than a solid rear axle. The new system helps soak up chunky road bumps to smooth out your ride. It helps optimize tire-to-pavement contact, and also communicates important steering feedback to the driver, which both improve controllability.

Following publication of the catalog, certain changes in standard equipment, options and the like, or product delays, may have occurred which would not be included on this page. Your Ford Dealer is your best source for up-to-date information. Ford Division reserves the right to change product specifications at any time without incurring obligations.

More Info? 800-392-FORD or visit [www.fordoutfitters.com](http://www.fordoutfitters.com)