



2002 Mercury



MERCURY

contents

03 cougar

04 grand marquis

07 mountaineer

08 sable

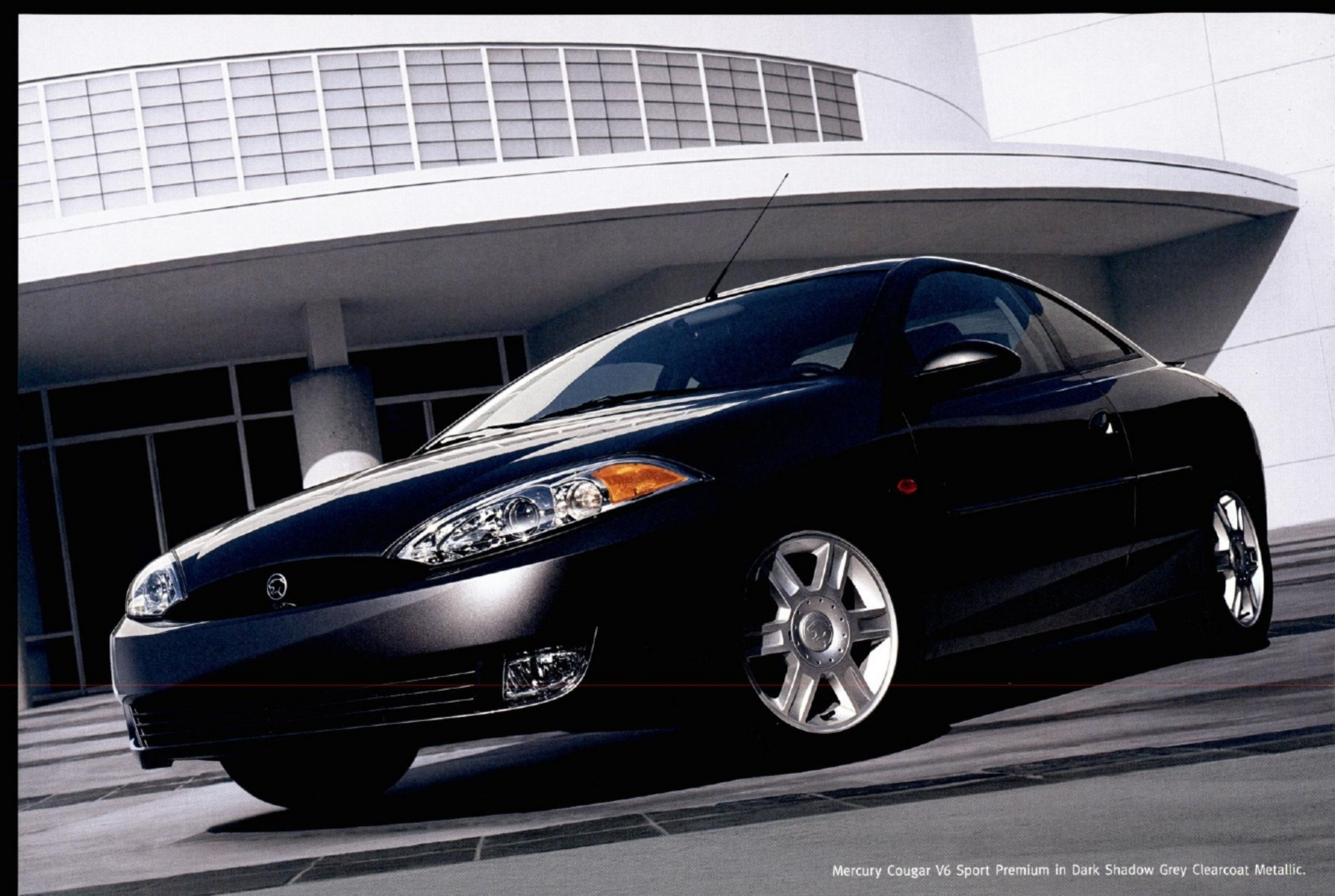
11 villager

You can see it in their precisely sculpted forms. And feel it when you engage them in a dynamic

drive over your favorite stretch of road. The five model lines of Mercury vehicles each express a spirit

of innovation that's been evident in every Mercury for more than 60 years. For 2002, what awaits is a

driving experience like no other, designed to satisfy an individual quite unlike anyone else: you.



Mercury Cougar V6 Sport Premium in Dark Shadow Grey Clearcoat Metallic.



Introducing the 2002 Mercury Cougar.
For the past 35 years, nothing's prowled
the streets with the combination of style,
comfort and performance like a Cougar.

- AM/FM stereo/single CD player
with premium sound system
- Available leather seating surfaces
- 50/50 split-fold rear seatback
- Available Anti-lock Brake System (ABS)
- Front independent MacPherson
compact strut and Quadralink
rear suspension systems
- Available aluminum footrest, clutch,
brake and accelerator pedal pads
- SecuriLock™ passive anti-theft system
- Available 170-horsepower 2.5-liter
DOHC 24-valve Duratec V6 engine
- Trip computer
- Wraparound projector and
reflector headlamps
- Available limited-edition Cougar XR
- Available limited-edition Cougar C2

Room to stretch out. Responsive V8 engine. Rear-wheel drive. Advanced safety features. Isn't it time you tasted the full-size luxury of Grand Marquis?

- Available leather seating surfaces;¹ 8-way power front seats, including rear center armrest with 2 cupholders
- All-Speed Traction Control and Anti-lock Brake System (ABS)
- Personal Safety System,² including dual-stage driver and right front passenger airbags²
- SecurilockTM passive anti-theft system
- Available power-adjustable foot pedals
- 220-horsepower 4.6-liter SOHC 16-valve V8 engine
- Earned the government's five-star rating for frontal crash performance since 1996
- Available Remote Keyless Entry system with keypad on driver's door
- Vacation-sized trunk
- Available 5-passenger seating

¹No charge option on LS models.

²Always wear your safety belt and secure children in the rear seat.



Mercury Grand Marquis LS Ultimate in Silver Frost Clearcoat Metallic. Shown with available equipment.



Mercury Mountaineer AWD in Silver Frost Clearcoat Metallic with Light Mineral Grey Clearcoat Metallic cladding. Shown with available equipment.



The impressive and sophisticated 2002 Mercury Mountaineer is a purposeful vehicle of agility and grace, and a very intelligent approach to modern life.

- 7-passenger seating with disappearing 3rd-row bench seat
- Available 239-horsepower 4.6-liter SOHC 16-valve V8 engine
- Available full-time All-Wheel Drive
- Independent front and rear suspension
- Available Dual-Zone Electronic Automatic Temperature Control
- Available running boards
- 4-wheel disc Anti-lock Brake System (ABS)
- Available power-adjustable foot pedals¹
- Fog lamps
- Available power moonroof
- SecuriLock™ passive anti-theft system
- Available side curtain airbags²

¹Late availability.

²Always wear your safety belt and secure children in the rear seat.

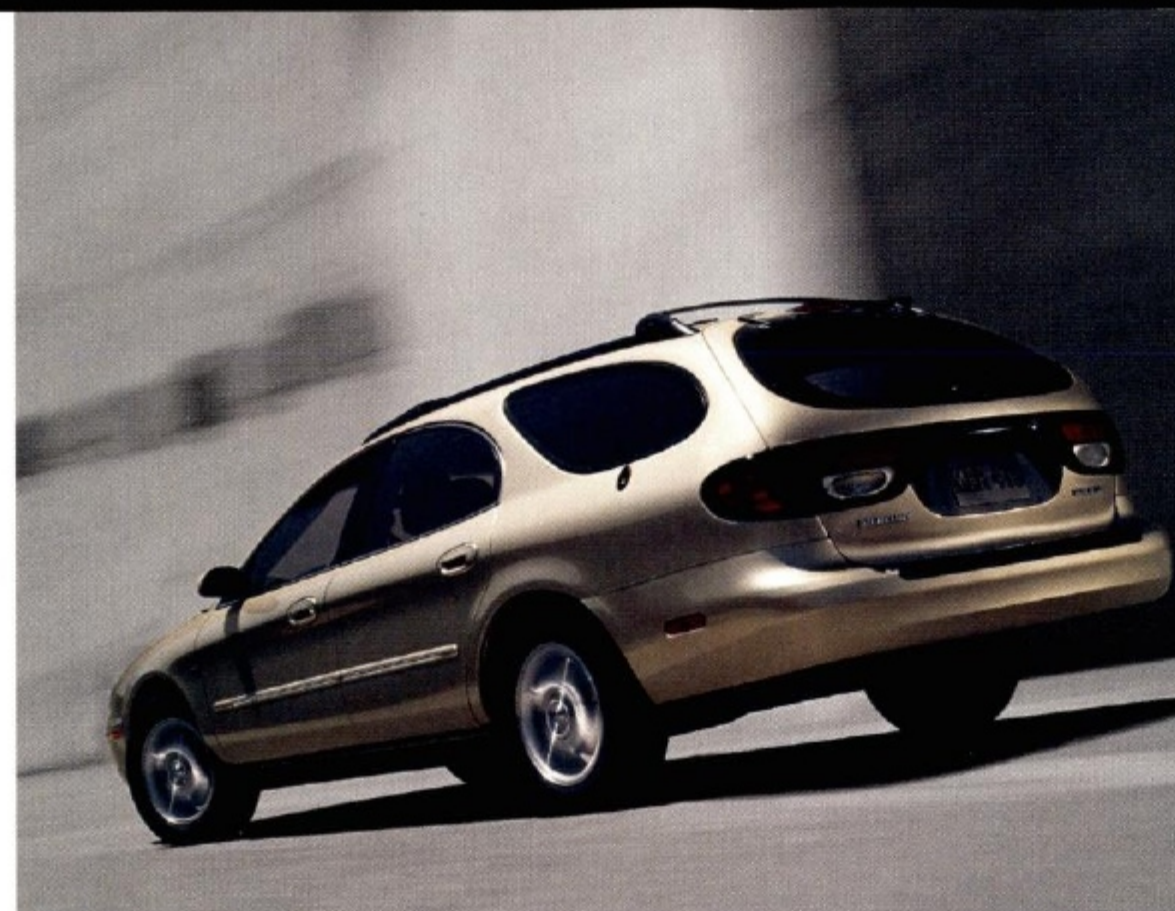
08 Mercury Sable

The 2002 Mercury Sable. For those discerning individuals who appreciate an automobile designed to express a more sophisticated sense of style.

- Available leather seating surfaces¹
- Personal Safety SystemTM including dual-stage driver and right front passenger airbags²
- Available 200-horsepower 3.0-liter DOHC 24-valve Duratec V6 engine
- With 3rd-row seating, the Mercury Sable Wagon can accommodate up to eight passengers
- Available 60/40 split-fold rear seatback
- Earned the government's five-star rating for frontal crash performance since 1999
- Available power-adjustable foot pedals
- SecuriLockTM passive anti-theft system
- Available side impact head/chest airbags²
- Anti-lock Brake System (ABS)

¹No charge option on LS Premium.

²Always wear your safety belt and secure children in the rear seat.



Mercury Sable LS Premium Sedan in Black Clearcoat. Shown with available equipment.



Mercury Villager Estate in Estate Green Clearcoat Metallic with Light Parchment Gold Clearcoat Metallic accent.



Versatile configurations for seating and cargo mean Villager is as active as you are. Yet its sleek style and car-like feel set it far apart from ordinary minivans.

- Earned the government's five-star rating for frontal crash performance
- Available quad bucket seats and two-tone leather seating surfaces
- Dual sliding doors
- Remote Keyless Entry system with 2 key fobs and panic alarm button
- Available Anti-lock Brake System (ABS)
- Power front windows, door locks and exterior mirrors
- Available 3-position parcel shelf with cargo net
- 170-horsepower 3.3-liter SOHC 12-valve V6 engine
- Available 3rd-row bodyside power window vents
- Rear liftgate with available flip-up window
- Available AutoVision® Entertainment System

As part of the Mercury Commitment®, your new vehicle is covered by the Mercury bumper-to-bumper limited warranty for three years or 36,000 miles, whichever occurs first. There is no deductible. The coverage includes 24-hour roadside assistance throughout the term, whether the problem is under warranty or not. And a corrosion-protection limited warranty provides coverage for five years. Please see your dealer for details.

Whether your individual needs are best met by a Mercury Cougar, Grand Marquis, Mountaineer, Sable or Villager, one thing is for sure: there is no substitute for a thorough test drive. With that in mind, we invite you to visit your authorized Mercury dealer today. We are confident the 2002 Mercury vehicles will impress you with their unique combination of expressive style, purposeful innovation and sheer driving pleasure.

Following publication of this brochure, certain changes in standard equipment, options, prices and the like, or product delays may have occurred which would not be included in these pages. Your Mercury dealer is your best source for up-to-date information. Lincoln Mercury reserves the right to change product specifications at any time without incurring obligations. To help minimize the impact of this brochure on the environment, Mercury prints on recycle-grade coated paper that contains a minimum of 10% post-consumer waste.



FIRST NAME _____ MIDDLE INITIAL _____ LAST NAME _____
ADDRESS _____

CITY _____ STATE _____ ZIP _____
E-MAIL ADDRESS _____
TELEPHONE _____



MERCURY

Complete and return this card to discover more about Mercury for 2002.

1. On which Mercury vehicle would you like more information?

- ☐ Mountaineer ☐ Sable ☐ Villager
☐ Grand Marquis ☐ Cougar

2. What vehicle do you currently drive?

YEAR (e.g., 2001) _____ MAKE (e.g., MERCURY) _____ MODEL (e.g., COUGAR) _____

3. How did you acquire your current vehicle?

- ☐ Purchase ☐ Lease, expiration date _____
MONTH (e.g., 10) _____ YEAR (e.g., 2001) _____

4. When are you thinking of acquiring a new vehicle?

- ☐ 0-30 days ☐ 2-3 months ☐ 4-6 months
☐ 7-12 months ☐ 1-2 years ☐ 2+ years
☐ No definite plans

5. How do you plan to acquire your next vehicle?

- ☐ Finance ☐ Lease ☐ Cash ☐ Undecided

6. How would you prefer to receive information from us?

- ☐ Posted mail ☐ E-mail ☐ Please do not contact me

MF2RC1



NO POSTAGE
NECESSARY IF
MAILED IN THE
UNITED STATES

BUSINESS REPLY MAIL

FIRST-CLASS MAIL

PERMIT NO. 199

BREA CA

POSTAGE WILL BE PAID BY ADDRESSEE

MERCURY

PO BOX 2349

BREA CA 92822-8716



Mercury Test Drive 888.566.8888

Customer Assistance 800.392.3673

Roadside Assistance 800.241.3673

mercuryvehicles.com



MERCURY

(600M) 8/01