

2002 INTRIGUE

2 0 0 2 I N T R I G U E



Oldsmobile





Intrigue GL shown in Sterling Metallic with available equipment.

A CAR DESIGNED FOR PERFECTIONISTS.

If you deliver nothing less than your best in all your chosen endeavours, you'll discover a very willing and eager partner in Intrigue. It transforms the tandem of car and driver into a harmonious unit. This automobile is built to react with the same grace and ease as its driver, with the enhanced control of the available Precision Control System and the security of the available OnStar in-vehicle communications and assistance service system. The performance is well balanced, supremely agile and very powerful – thanks to the Twin Cam V6 engine that produces 215 horsepower and 230 lb.-ft. of torque. The sophisticated sport sedan that invites you to strive for perfection. The 2002 Oldsmobile Intrigue.



The available rear spoiler accentuates Intrigue's refined exterior styling.



Reflector optic headlights are more than stylish; they also contribute to excellent nighttime visibility.



The available factory-installed power glass sunroof opens at a single touch.

YOU COULD SAY OUR ENGINEERS HAD A VISION.

In designing a car with the very latest in technology, it is easy to get lost in the details. But a successful automobile is much more than a combination of parts. The challenge is to ensure the original vision of the vehicle is integrated into every aspect of the design. Likely the first thing you'll notice about Intrigue is how all its lines flow together seamlessly. But as rewarding as Intrigue is to observe, the real gratification is in how form always follows function. With Intrigue, the vision has definitely been clearly realized.



Intrigue has all the angles covered, with a fluid design that is equally as pleasing from the front as it is in profile.



Crystalline lenses give Intrigue's tail lights a jewel-like appearance.



Intrigue GLS shown in Black Onyx.

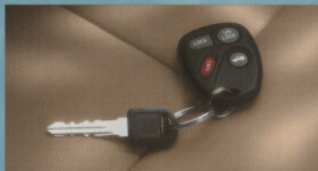
Intrigue GL interior with available leather seating surfaces in Neutral.



A handy driver's storage compartment is positioned to the left of the steering column.



GL and GLS models both feature the versatility of 60/40 split-folding rear seatbacks [available on GX].



The remote keyless entry system locks and unlocks the doors and can open the trunk at a single touch.

EVERYTHING AND EVERYONE HAS THEIR PLACE.

You belong in a car that responds to your commands with immediacy and precision. Intrigue's interior has its focus squarely on the driver. The lines are clean and the environment is exceedingly quiet, minimizing distractions and interruptions. The layout of the controls and the readability of the gauges further increase the sense of an intuitive connection between car and driver. Which is just as it should be when driving a premium touring sedan.



Highly legible analogue gauges and meticulously arranged controls heighten the driver's total sense of command.



Intrigue GL and GLS allow the driver and front passenger the comfort of individual temperature settings.



For excellent sound quality, an 8-speaker Bose sound system is available on GL and GLS models.

HIGH TECHNOLOGY. FOR A HEIGHTENED CONNECTION WITH THE ROAD.

The 21st century has brought with it a new generation of performance that can't be measured by 0-100 km times or horsepower ratings alone. Today's systems are complex and interrelated. The technology must be advanced, yet easy to use. The deeper you look into Intrigue, the more compelling its engineering story. The list of innovative automotive hardware includes everything from an adaptive transmission shift quality and coil-over-strut tri-link suspension to Teflon-coated steering rack bushing and standard full-function traction control. These features may sound dry and technical, but they translate into something much more tangible and immediate – a strong connection with the road.



Intrigue's fully independent touring suspension handles rough pavement and tricky curves with ease.



Braking performance and driver control are enhanced by 4-wheel disc brakes with ABS.

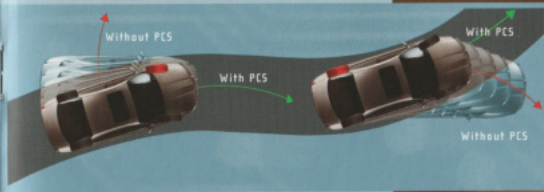


The standard 3.5L Twin Cam V6 produces 215 hp at 5600 rpm and 230 lb.-ft. of torque at 4400 rpm.

Intrigue's gas-charged front struts with 4-phase valving and a coil-over-strut tri-link rear suspension design contribute to an exceptionally smooth ride.

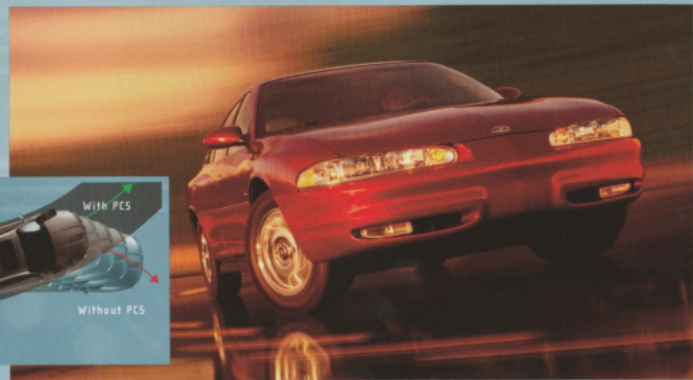


Intrigue's standard 4-wheel anti-lock braking system (ABS) helps you maintain steering control during hard braking, even on most slippery surfaces.



A CAR THAT KEEPS ITS COMPOSURE. SO YOU CAN TOO.

Nothing tests the nerve and skill of a driver like a firm avoidance manoeuvre. We sincerely hope you'll never have to discover how well Intrigue's available Precision Control System helps you maintain steering control in demanding situations. PCS gathers data from a series of sensors connected to the steering, anti-lock braking and traction control systems. It uses these inputs to identify any lateral skid and then takes corrective measures, applying pressure to one of Intrigue's four disc brakes. This helps to prevent the kind of sliding associated with either an oversteer or understeer condition. By keeping you on the straight and narrow, PCS represents one of the most significant driver control features since the introduction of anti-lock brakes. Intrigue helps you maintain control – and your composure, too.



TO SOME, THIS IS INTRIGUE'S MOST FLATTERING VIEW.

As much as Intrigue's exterior styling and interior refinements create a personality for this automobile, it is the underhood and underbody engineering that defines the driving and ownership experience. You don't need to be a car buff or a techie to appreciate Intrigue's advanced automotive technology.

TRI-LINK SUSPENSION

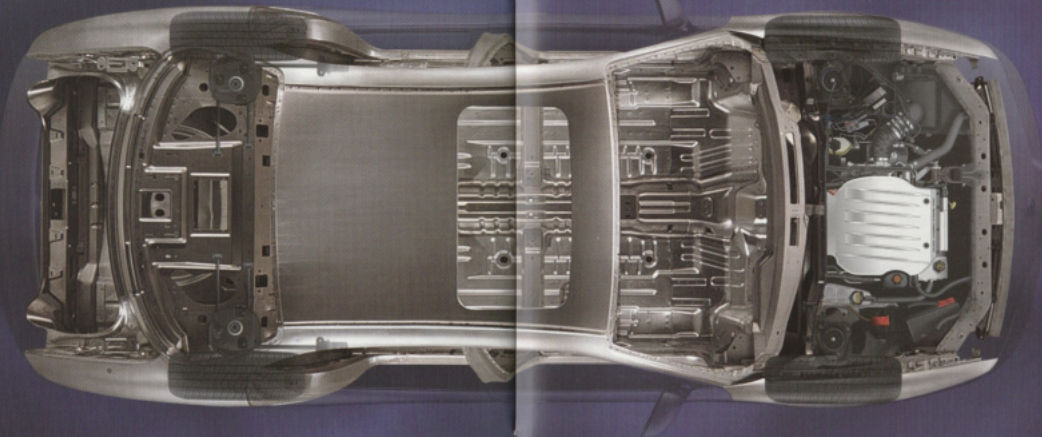
The tri-link rear suspension is designed to help the tires conform more precisely to the road surface, thereby enhancing control. Lightweight aluminum components reduce unsprung weight and help provide sharper responses.

RIGID BODY

Intrigue's impressively stiff unibody construction absorbs road shocks without bending or twisting. By letting the suspension do its job, Intrigue remains remarkably stable when manoeuvring, as well as driving on rough or uneven roads. A rigid body also helps to block out road noise and vibrations.

H-RATED HIGH-SPEED RADIAL TIRES

H-rated tires enhance high-speed directional stability as well as providing outstanding response to steering input, braking and quick manoeuvres. They are included with the available Precision Control System.



SPLINED INTERMEDIATE SHAFT

Rigidly mounted but well-damped to keep out road rumble and noise, the splined intermediate shaft enhances on-centre steering feel to help you stay in control.

REINFORCED STRUT TOWERS

The added rigidity at the top of the strut towers helps keep the struts under precise control. In turn, the firmly located struts exercise more precise control over wheel motion under dynamic conditions.

MAGNETIC POWER-ASSIST STEERING

The patented Magnasteer speed-sensitive variable-assist power steering provides just the right amount of assist. It eases parking and low speed manoeuvres but keeps you connected to the road at higher speeds.



OnStar® Oldsmobiles are known for the sophistication of their driving experience. OnStar takes that a step further. It is an innovative in-vehicle communications and assistance service system that's designed to give you greater safety, security and confidence while on the road.* OnStar uses existing Global Positioning System (GPS) technology and wireless communications to provide you with person-to-person assistance from Advisors standing by 24 hours a day – all at the touch of a button, so you're talking hands-free.

The OnStar Safety and Security Plan is included for one year on Intrigue GL and GL5 models equipped with the 1SB Preferred Equipment Group. At the touch of a button, an OnStar Advisor is available to contact emergency service providers or roadside assistance. If air bags are deployed in an accident, the OnStar Advisor contacts the vehicle to determine the assistance that is needed. If you cannot answer, the OnStar Advisor will contact emergency help. Your OnStar Advisor can also help track your vehicle if it is stolen and help guide authorities to its location. In addition, OnStar offers The Premium Services Plan of convenience and concierge-type services. See your dealer for more details about all the terms and plans available for your Oldsmobile.

OnStar. How Can We Help You?



*Service contract required. OnStar uses existing emergency service providers as well as cellular and satellite technologies and is subject to their limitations. Vehicle electrical system needs to be operating for features to function properly.

STANDARD AND OPTIONAL EQUIPMENT

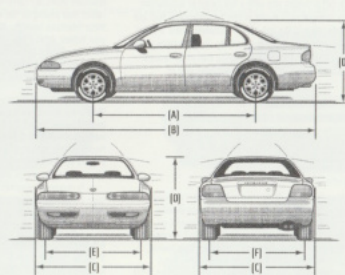
	GX	GL	GLS
SAFETY AND SECURITY			
Air bags – Next Generation, driver and front-passenger, frontal	S	S	S
Brake/transmission shift interlock	S	S	S
Door locks – automatic power, programmable	S	S	S
Door locks – rear door child-security	S	S	S
Headlights – Daytime Running Lights with automatic light control	S	S	S
Keyless entry system – remote (includes Panic feature)	0	S	S
Safety belts – front shoulder, height-adjustable	S	S	S
Safety belts – rear-seat child shoulder belt comfort guides	S	S	S
Safety restraints – LATCH (Lower Anchors and Top Tethers for Children), rear seats	S	S	S
Theft-deterrent system – PASSLock	S	S	S
Traction control – electronic, full-function, all-speed	S	S	S
Trunk – internal manual trunk entrapment release handle	S	S	S
MECHANICAL			
Battery – Delco Freedom II with run-down protection	S	S	S
Brakes – power, 4-wheel disc	S	S	S
Brakes – 4-wheel anti-lock braking system (ABS)	S	S	S
Drive – front-wheel	S	S	S
Engine – 3.5L Twin Cam V6 with SFI Horsepower – 215 @ 5600 rpm, Torque – 230 lb.-ft. @ 4400 rpm	S	S	S
Engine block heater	S	S	S
Exhaust system – aluminized stainless steel	S	S	S
Steering – power, Magnasteer magnetic speed variable-assist, rack-and-pinion	S	S	S
Suspension – 4-wheel independent, touring	S	S	S
Transmission – 4-speed automatic with overdrive	S	S	S
Precision Control System – includes Vehicle Dynamic Control, 3.29 final drive ratio and P225/60R16 H-rated all-season performance tires	0	0	0
EXTERIOR			
Antenna – rear-window integrated	S	S	S
Body panels – 2-sided galvanized steel (except roof)	S	S	S
Fog lights	–	S	S
Glass – Solar-Ray, tinted	S	S	S
Lights – front cornering	S	S	S
Mirrors – foldaway, power remote control	S	S	S
Moldings – bodyside, body-colour	S	S	S
Paint – base-coat/clear-coat	S	S	S
Spoiler – rear deck-lid	0	0	0
Sunroof – power, sliding glass panel with sunshade	–	0	5
Tires – P225/60R16 all-season touring	S	S	S
Wheels – 16"x6.5" silver-painted, aluminum [A]	S	S	S
Wheels – 16"x6.5" chrome-finish aluminum [B]	–	0	0
Windshield wipers – 2-speed with variable delay (intermittent)	S	S	S

	GX	GL	GLS
EXTERIOR [CONT.]			
Gold Accent Package – includes Gold accents on hood logo, wheel emblems and deck-lid nameplates	–	0	0
Sun and Sound Package – includes power sunroof, AM/FM stereo with cassette and CD players and Bose 8-speaker premium sound system	–	0	–
INTERIOR			
Air conditioning	S	–	–
Air conditioning – automatic, dual-zone	–	S	S
Air Filtration system	S	S	S
LATCH convenience net	–	S	S
Console – front floor with armrest, storage, cupholders	S	S	S
Cruise control – steering wheel-mounted, electronic with resume, coast, clear and decelerate/accelerate features	S	S	S
Defogger – electric rear-window	S	S	S
Floor mats – front and rear, carpeted	S	S	S
Garage door opener – 3-channel programmable	–	–	S
Instrumentation – analogue cluster (includes speedometer, tachometer, coolant temperature and fuel gauges – turn signal-on reminder, low oil, low coolant, low fuel, low washer fluid levels and oil change indicators)	S	S	S
Lights – instrument panel, glovebox, courtesy with delayed entry/exit, theatre dimming, front and rear reading and trunk	S	S	S
Leather Appointment Group – includes leather-wrapped steering wheel, shift knob and centre armrest	–	S	S
Mirror – rear-view, auto-dimming electrochromic with compass	–	–	S
Power outlet – auxiliary, 12-volt	S	S	S
Retained accessory power	S	S	S
Steering wheel – leather-wrapped	–	S	S
Steering wheel – sound system controls	–	S	S
Sunshades – LH and RH padded; covered vanity mirrors	S	–	–
Sunshades – LH and RH padded; illuminated vanity mirrors	–	S	S
Tilt-wheel adjustable steering column	S	S	S
Trunk – release, power remote	S	S	S
Windows – power, driver's express-down and passenger window lock-out features	S	S	S
Wood grain accents – front floor console and door panels	–	–	S
SEATS			
Cloth reclining front bucket seats	S	S	–
Reclining front bucket seats with leather seating areas	–	0*	–
Reclining front bucket seats with two-tone perforated leather seating areas	–	–	S
Power 6-way driver adjuster	0*	S	S
Power 6-way front passenger adjuster	–	0*	S
Heated, driver and front passenger	–	–	0*
Seatbacks – rear, 60/40 split-folding with centre folding armrest	0*	S	S

*Requires Preferred Equipment Group (PEG) 15B.

	GX	GL	GLS
SOUND SYSTEMS			
All Intrigue sound systems include an electronically tuned Delco AM/FM stereo with seek up/down, scan, Radio Data System [RDS], digital clock and TheftLock			
AM/FM stereo, CD player and auto tone control	S	S	–
AM/FM stereo, cassette tape and CD players and auto tone control	0	0	S
AM/FM stereo, cassette tape and CD players and Bose 8-speaker sound system with rear-shelf amplifier	–	–	0
4-speaker sound system	S	–	–
6-speaker dimensional sound system	0	S	S
PREFERRED EQUIPMENT GROUPS			
Shown below are the Preferred Equipment Groups (PEGs) available on all Intrigue models. PEGs are packages of popular options that have been assembled to add value and make ordering easier. PEGs are subject to change without notice. Please note that features included in PEGs are not always available as individual options. For more information on Preferred Equipment Groups, please see your Sales Consultant.			
Keyless entry system – remote (includes Panic feature)	X	S	S
Seat – power 6-way driver adjuster	X	S	S
Seatbacks – rear, 60/40 split-folding with centre folding armrest	X	S	S
Sound system – 6-speaker dimensional sound system	X	S	–
OnStar In-Vehicle Communications and Assistance Service – includes one year Safety and Security Plan and interior rear-view mirror with auto-dimming electrochromic feature	–	X	X
Spoiler – rear deck-lid	–	X	X
Seats – heated reclining front bucket seats with leather seating areas and power 6-way front passenger adjuster	–	X	–
Precision Control System – includes Vehicle Dynamic Control, 3.29 final drive ratio and P225/60R16 H-rated all-season performance tires	–	–	X
Sound system – AM/FM stereo, cassette tape and CD players and Bose 8-speaker sound system with rear-shelf amplifier	–	–	X
Wheels – 16"x6.5" chrome-finish aluminum [B]	–	–	X
S – Standard, 0 – Optional individually or in combination with other optional equipment, X – Included with Preferred Equipment Group.			
WHEELS			
			
A – 16" silver-painted aluminum	B – 16" chrome-finish aluminum		

DIMENSIONS



EXTERIOR, mm [in.]	SEDAN	
Wheelbase [A]	2769	[109.0]
Length [B]	4975	[195.9]
Width [C]	1869	[73.6]
Height [D]	1438	[56.6]
Front tread [E]	1577	[62.1]
Rear tread [F]	1567	[61.7]
INTERIOR, mm [in.] FRONT/REAR		
Headroom	999/951	[39.3/37.4]
Legroom	1077/937	[42.4/36.9]
Shoulder room	1472/1448	[58.0/57.0]
Hip room	1413/1392	[55.6/54.8]

CAPACITIES/WEIGHT

Trunk, L [cu. ft.]	462	[16.3]
Fuel tank, L [imp. gal.]	68	[15.0]
Curb weight [estimated], kg [lb.]	GX –	1539 [3393]
	GL –	1555 [3428]
	GLS –	1560 [3439]

TOWING

3.5L Twin Cam V6	3.05 final drive ratio 454 kg [1000 lb.] maximum gross trailer weight*
------------------	---

*Includes weight of trailer, cargo, passengers and equipment. All towing recommendations are subject to change. Trailer tongue load should be 10% of the maximum trailer weight but should not exceed the load rating specified for that vehicle, engine or hitch combination. See your dealer or refer to the Intrigue Owner's Manual for details.

When you select a 2002 Intrigue as your next vehicle, you also receive General Motors of Canada's commitment to your complete satisfaction with your new vehicle. GM provides you with a full range of acquisition options and backs every Intrigue with owner protection programs that are among the most comprehensive in the industry – including a new 5-year/100,000 km Oldsmobile Extended Powertrain Warranty. To learn more about these programs and about the features and benefits that make today's Oldsmobiles such attractive vehicles, visit our Web site at

gmcana.com

or call our

CUSTOMER COMMUNICATION MARKETING CENTRE AT

1-800-GM-DRIVE

or 1-800-463-7483 and

1-800-263-3830 for TDD users.

GM TOTAL™ WARRANTY

Every new GM car and light-duty truck is backed by the GM TOTAL™ Warranty, 3-year/60,000 km (whichever comes first) which covers complete vehicle repairs, including parts and labour, to correct any defects in material or workmanship occurring during the warranty period. The GM TOTAL™ Warranty requires no deductible. Taxes are included. Warranty features include towing, no-charge warranty transfer, 6-year/160,000 km (whichever comes first) corrosion perforation coverage and 8-year/130,000 km (whichever comes first) coverage on catalytic converters and powertrain control modules (PCM). Regular maintenance is not included. Application of additional rust-inhibiting materials is not required under the corrosion coverage and none is recommended. See your dealer for terms of this limited warranty.

OLDSMOBILE EXTENDED POWERTRAIN WARRANTY

In addition to the GM TOTAL™ Warranty, every 2002 Oldsmobile model is also covered by the new special Powertrain Warranty for 3 years or 100,000 km (whichever comes first) from the original in-service date of the vehicle. Towing, Roadside Service Allowance and Rental Allowance are also included in the special Powertrain Component Warranty. If more comprehensive coverage is desired, GM offers an available GM Protection Plan. See your dealer for details.

GM ROADSIDE ASSISTANCE

When you drive away in your new GM car or light-duty truck, the security and convenience of round-the-clock Roadside Assistance is available via a toll-free number usable anywhere in Canada or the United States. During the warranty period, whenever a problem may occur, your Roadside Service Advisor is just a phone call away. Whether it's lock-out assistance, a jump start, a flat tire change, fuel delivery or towing assistance, simply call 1-800-268-6800 and we'll be there to assist you without charge. See your dealer for details.

GM COURTESY TRANSPORTATION

Your GM dealer may offer courtesy transportation while your new GM vehicle is serviced at your GM dealership for repairs covered under the 3-year/60,000 km GM TOTAL™ Warranty. Certain restrictions apply. See your GM dealer for full details.

GMAC

General Motors Acceptance Corporation of Canada, Limited (GMAC) is a General Motors division that was created specifically to assist GM dealers in marketing new vehicles to qualified GM customers. You can arrange GMAC financing right in your GM dealer's showroom and the terms of your arrangement can be tailored to fit your particular needs. It's a convenient, flexible alternative to a conventional bank loan.

GM SMARTLEASE

GM SMARTLEASE is administered by GMAC as an alternative to traditional financing. Qualified SMARTLEASE customers pay for the portion of the vehicle that is used, rather than paying for the entire vehicle as with traditional financing. Consider these SMARTLEASE benefits: Affordable monthly payments, drive more vehicle for your money, drive a new vehicle more often, no resale risks or trade-in hassles and a guaranteed option-to-purchase price when your lease ends. Most importantly, there are no surprises with SMARTLEASE. See your GM dealer about the benefits of SMARTLEASE. Or call 1-800-GM-DRIVE.

THE GM CARD

Start your dream rolling with The GM Card®. With The GM Card, your dream of owning a new GM car, truck or van can quickly become a reality. Every time you make a purchase using The GM Card, you accumulate GM Card Earnings. Redeem them towards the Total Purchase Price or lease down payment of your next eligible new GM vehicle anytime you wish, up to \$3,500 on selected vehicles. What's more, there's no annual fee!

To receive an application or for full terms and conditions, please see your local GM dealer, TD Bank branch or call 1-800-461-3279.

*Registered Trade Mark of General Motors Corporation, TD Bank licensed user.

†See The GM Card Program Rules for details. See your dealer for vehicle eligibility.

GM GRADUATE PROGRAM

If you're a recent graduate from a recognized college or university, you may qualify for \$1,000 (all taxes included) off on the purchase or lease down payment of the new GM vehicle of your choice.* Anyone graduating from a 3-year university degree program, a 2-year college program or, in Quebec, a 3-year CEGEP D.E.C. (Technique) program between May 1, 1999 and December 31, 2002 can take part. To get credit for your degree, see your GM dealer for full details, or call toll-free 1-800-GM-DRIVE.

*Including Sales, Sable and Isuzu. Offer not to be used in conjunction with \$1,000 GM Card Student Bonus Offer.

GM MOBILITY PROGRAM

If you or your passenger[s] have a physical disability which prevents you from driving or riding in a factory-equipped vehicle, find out about the GM Mobility Program for Persons with Disabilities. You may be eligible for reimbursement of up to \$1,000 (all taxes included) for adaptive equipment you may require for your new GM vehicle. Your GM dealer can also set up complete GMAC financing for you. (SMARTLEASE not eligible.) Beyond that, your GM dealer can provide you with lists of qualified driver assessment centres and mobility equipment installers. Call this toll-free number for more information: 1-800-GM-DRIVE or TDD users, 1-800-263-3830.

GM PROTECTION PLAN

GMPP coverage provides you with "Peace of Mind" protection from repair costs (parts and labour), as well as many associated expenses that may occur to your vehicle beyond the GM TOTAL™ Warranty period. Whether you're purchasing or leasing your GM vehicle, there's a GMPP coverage level and plan term to suit your budget and driving needs. Be sure to ask your GM dealer about the many benefits you receive through your purchase of the General Motors Protection Plan, the only Extended Service Plan backed by the resources and commitment of General Motors.

GM ACCESSORIES

If you want to personalize your vehicle to make it your own, ask your Sales Consultant about genuine GM Accessories. Your GM dealer can supply and install quality GM Accessories specifically engineered for your GM vehicle. When installed at the time of purchase or lease, GM provides GM TOTAL™ Warranty coverage for all permanently dealer-installed GM Accessories.

GM GOODWRENCH SERVICE

Regular maintenance can help your new vehicle last longer, run better and be more fuel efficient. It can also enhance your resale or trade-in value.

At GM Goodwrench Service, we know your life is busy. So, when it's time for routine maintenance service, we promise to do everything we can to help you get on with your day and to get you back on the road where you want to be. Plus, nobody knows your GM vehicle better than GM Goodwrench Service factory-trained technicians. GM Goodwrench Service is available at select GM dealers.

GM CUSTOMER SATISFACTION

It's good to know, when you travel long distances, that there are hundreds of GM dealers in Canada, each one ready to provide you with professional service and genuine GM parts. You can phone the GM Customer Communication Marketing Centre toll-free at 1-800-GM-DRIVE or 1-800-463-7483 (TDD users, 1-800-263-3830) to talk with trained representatives regarding any General Motors product or service. The Centre is open Monday through Friday 7:30 a.m. to 11:30 p.m. (EST) and Saturday 7:30 a.m. to 6:00 p.m. (EST). You can also reach us at our Web site at gmcana.com.

A WORD ABOUT THIS BROCHURE

Some of the equipment shown or described throughout this brochure may be available at extra cost. This brochure is based on the latest information at the time of printing. General Motors of Canada Limited reserves the right to make changes at any time, without notice, to specifications, equipment, colours, models, availability, programs and services. Your Oldsmobile dealer is the best source for up-to-date information. General Motors of Canada Limited reserves the right to lengthen or shorten the model year for any product, for any reason or to start and end model years at different times.

A WORD ABOUT ASSEMBLY

Oldsmobiles are equipped with engines and components produced and assembled by different operating units of General Motors, its subsidiaries and suppliers and these engines and components may change or be obtained from different sources from time to time. All such engines and components are approved for use in Oldsmobiles. Certain equipment ordered may be unavailable at the time of assembly and we suggest that you verify that your vehicle includes the equipment you ordered or if there are changes, that they are acceptable to you.

General Motors, GM, the GM emblem, the GM Canada Web site address, Oldsmobile, the Oldsmobile emblem, Intrigue, Magnum, PASSLock, SMARTLEASE, Solar-Ray, Tilt-Wheel and the TOTAL Warranty are all trade marks of the General Motors Corporation and/or General Motors of Canada Limited.

GMAC is a registered trade mark of the General Motors Acceptance Corporation. OnStar is a registered trade mark and the OnStar button is a trade mark of the OnStar Corporation.

TheLock is a registered trade mark of Delphi Automotive Systems.

Bose is a registered trade mark of the Bose Corporation.

RDS is a trade mark of the U.S. National Association of Broadcasters.

Printed in Canada, July 2001.

© Copyright 2001 General Motors of Canada Limited



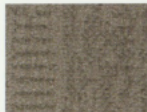
General Motors of Canada Limited

INTERIOR FABRICS

GX/GL CLOTH



Neutral

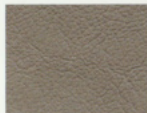


Pewter

GL LEATHER



Neutral



Pewter

GLS LEATHER



Neutral [two-tone]



Pewter [two-tone]

EXTERIOR COLOURS

Colours may not be exactly as illustrated due to restrictions of printing process. Please see your sales consultant for specific colour and model availability.



12 – Sterling Metallic*



40 – Ivory White



28 – Indigo Metallic



41 – Black Onyx



33 – Sandstone Metallic



72 – Ruby Red Metallic



37 – Tropic Teal Metallic



75 – Bronze Mist Metallic

EXTERIOR/INTERIOR COLOUR COMPATIBILITY

EXTERIOR	INTERIOR	NEUTRAL	PEWTER
12 – Sterling Metallic*		•	•
28 – Indigo Blue Metallic		•	•
33 – Sandstone Metallic		•	•
37 – Tropic Teal Metallic		•	•
40 – Ivory White		•	•
41 – Black Onyx		•	•
72 – Ruby Red Metallic		•	•
75 – Bronze Mist Metallic		•	•

*Not available with Gold Accent Package.

2 0 0 2
INTRIGUE



Oldsmobile

