

The New
05 FOCUS



Built for life in Canada

Built for Corners

The new 2005 Ford Focus is big on everything that matters: quality, performance, reliability, functionality and fun – especially fun. Available in three-door, five-door, sedan and wagon models, it comes with two all-new cleaner, meaner and quieter engines for 2005.



2005 Ford Focus



ZX4 Sedan

03

- New overhead console
- Award-winning and built to last
- New 151-hp ZX4 ST performance sedan

ZX3 Three-Door & ZX5 Five-Door

05

- European-tuned suspension
- New Sony® Sound option
- More storage space

ZXW Wagon

07

- New front-end design
- All-new 136-hp Duratec 20 i4 engine
- Carladan Winter Package

Interior & Safety Features

09

- New interior design features
- Advanced Personal Safety System™
- Side-impact air bags

Specifications, Series Features & Options

11

More Than You Expect From A Sedan

The 2005 Ford Focus is a new generation of car.



Award-Winning and Built to Last

Focus has been named one of Car and Driver magazine's 10Best cars for five years in a row (2000-2004) and a Consumer Guide® Best Buy for both 2003 and 2004. It's also built to last, with new quality- and durability-enhancing features that include a harder steel-alloy hood and larger front brakes.



Focus ZX4 ST shown in CD Silver Clearcoat Metallic

More Than You Expect From a Sedan

Focus ZX4 is easy on gas, just what you expect from a compact sedan. But ZX4 delivers much more. Like quick, confident acceleration and a smooth ride. And seating for five adults, all kinds of new storage spaces and an available Comfort Group that includes a segment-exclusive tilting/telescoping steering wheel. Bet that's more than you expected...



A Passion for the Road

The new ZX4 ST takes performance and passion to new levels. It features an all-new, 151-hp Duratec 23 engine, four-wheel disc brakes and rides on the same road-hugging suspension as the acclaimed European Focus ST170. Inside, a uniquely accented interior treatment, sport bucket seats, and body-colour door handles and side mirrors complete the package.



The Refined Look, Continued

The new Focus exterior refinements carry over to the rear, where new taillamps and a new bumper fascia frame a redesigned decklid on ZX4 models. Open the decklid and you'll find up to 396 litres (14.0 cu. ft.) of carpeted cargo space.



Convenient Storage, Close at Hand

No more fumbling around for your sunglasses or garage door opener. A new overhead console (standard on ZX4 SE, SES and ST models) includes storage for both. (Not available with optional moonroof)

Many of the features shown here are also available on Focus ZX3 and ZX5 models, and Focus ZXW wagons. See page 11 for more information.

Measure Your Speed in RPM – Reactions Per Minute

Is there an easier way to turn heads than with Focus ZX3 and ZX5? Their bold looks are matched by equally bold performance featuring the kind of kick-in-the-pants acceleration you love. And when you want to make a quick getaway with all your gear, there's that big cargo area in the back where you can pack up to 793 litres (28 cu. ft.)* of whatever you've got.

The Genuine Sound of Sony®

If you like your music loud and proud, check out the optional 460-watt (peak) Audiophile Sound System featuring an in-dash six-disc CD changer/MP3 player and five genuine Sony® speakers, including an 8-inch subwoofer. Available on Focus ZX3 SE and ZX5 SES models.



Say Hello to the Stars

If there's anything better than driving under the stars on a warm summer night, it could only be reaching up and touching them through the optional power moonroof on ZX3 SE and ZX5 SES models.



More Storage Spaces and Places

Focus provides a place for everything and helps keep everything in its place. New-for-2005 features include a six-CD storage bin next to the steering wheel and handy can/bottle holders moulded into the front door panels.

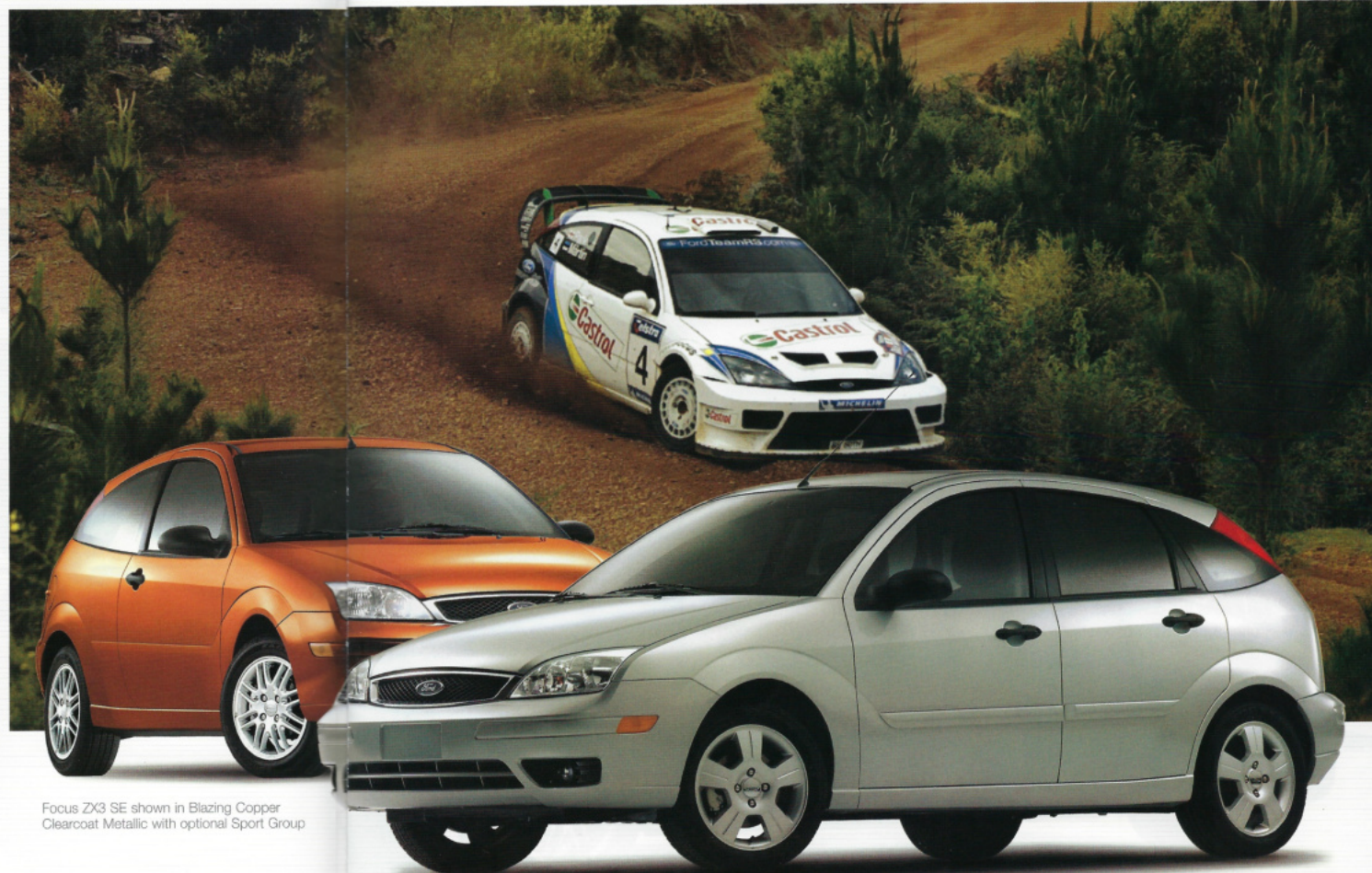
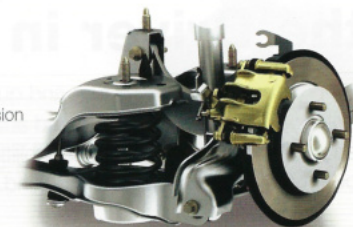


* Maximum capacity when rear seats folded down.

Many of the features shown here are also available on Focus ZXW wagons and Focus ZX4 sedans. See page 11 for more information.

Like Your Corners Sharp?

Focus has long been known for its riding-on-rails cornering and precise driving dynamics. For 2005, new European-tuned suspension settings and larger front disc brake rotors accentuate your driving experience. More corners, please!



Focus ZX3 SE shown in Blazing Copper Clearcoat Metallic with optional Sport Group

Focus ZX5 SES shown in CD Silver Clearcoat Metallic

A Wagon Engineered for the Driver in You

Fun and fast. Quick into a turn and quick out. Focus ZXW combines all the performance attributes of a German-engineered automobile with the warehouse-shopping, grocery-bag-carrying, sports-gear-hauling capabilities your life demands. Let it stir the soul of the driver in you – without leaving anything behind.

Room to Spare

Fold down the standard 60/40 split folding rear seatbacks and you open up all kinds of cargo-carrying possibilities. With up to 2067 litres (73.0 cu. ft.) of cargo room, Focus ZXW gives you minivan-like capacity in a fun-to-drive package.



Pleasing to the Eye

A new front-end – including new headlamps and new circular fog lamps (available on select models) – provides Focus with a new look of refinement. (ST fog lamp shown)



Winter Made Easier

Focus is the only car in its class to offer the comfort of heated front seats and heated power mirrors, included in the optional Canadian Winter Package on Focus ZXW SE. The Canadian Winter Package Plus (standard on ZXW SES models) adds the driving confidence of four-wheel anti-lock brakes and all-speed traction control.



Many of the features shown here are also available on Focus ZX3 and ZX5 models, and Focus ZX4 sedans. See page 11 for more information.

Cleaner, Meaner – and Quieter, Too

The all-new, 136-hp Duratec 20 engine pumps out 24% more power with lower emissions than last year's base engine. It also features chain-driven double overhead camshafts for greater durability and noise-reducing composite materials to help make it quieter, too.



Focus ZXW SES shown in Sonic Blue

Designed for Your Pleasure

Clean, functional design and exceptional comfort are at the forefront of the new interior upgrades in the 2005 Focus. A two-tone instrument panel, new seat fabrics and extensive use of sound insulation make the Focus cabin a very comfortable place for you and your passengers.



Focus ST interior shown in Charcoal. U.S. model shown.

Smart, Safe and Secure

Advanced engineering and sophisticated design come together in an expansive array of safety and security features on the 2005 Focus. These include a Safety Cell structure – designed to help absorb crash energy before it reaches the passenger compartment – and high-strength steel side-door beams to provide a protective environment in a variety of crash situations.



Billions of Security Codes

Focus' standard SecuriLock® anti-theft system encodes the ignition key with one of billions of security codes, every time you turn off the ignition. Without the right key and the right code, the engine will not start and would-be thieves are thwarted.



We've Got Your Side

Side-impact air bags add an extra degree of safety. Located in the outboard side of the front seatbacks, they're designed to help protect the driver and front passenger during certain side-impact collisions.*

(Optional on SE, SES and ST series)



Safe and Secure

All five seating positions in Focus are equipped with three-point safety belts – still the most effective safety system there is. In addition, LATCH anchor points in the rear seats help make attachment easier for the latest generation of child safety seats.



Tailor-Made Protection

Advanced Personal Safety System™ – Standard on every 2005 Focus, this system utilizes a network of smart sensors, customizing the deployment level of the dual-stage air bags based on: whether a front passenger is present and his/her weight range; the position of the driver's seat; whether the front safety belts are in use; and the overall severity of the crash. The system will also turn off the passenger air bag if there's something (or someone) small on the passenger seat or if the seat is unoccupied.

* Always wear your safety belt and secure children in the rear seat.

Many of the features shown here are also available on Focus ZX3 and ZX5 models, and Focus ZX4 sedans. See page 11 for more information.

Specifications

DIMENSIONS mm (in.)

	ZX3 3-Door Hatchback	ZX5 5-Door Hatchback	ZX4 4-Door Sedan	ZXW 4-Door Wagon
Wheelbase	2616 (103.0)	2616 (103.0)	2616 (103.0)	2616 (103.0)
Length	4280 (168.5)	4280 (168.5)	4450 (175.2)	4531 (178.4)
Height	1430 (56.3)	1430 (56.3)	1430 (56.3)	1430 (56.3)
Width	1699 (66.9)	1699 (66.9)	1699 (66.9)	1699 (66.9)
Tread - Front	1494 (58.8)	1494 (58.8)	1494 (58.8)	1494 (58.8)
- Rear	1486 (58.5)	1486 (58.5)	1486 (58.5)	1486 (58.5)
Head room - Front	993 (39.1)	993 (39.1)	993 (39.1)	993 (39.1)
- Rear	980 (38.6)	980 (38.6)	980 (38.6)	1011 (39.8)
Shoulder room - Front	1359 (53.5)	1359 (53.5)	1359 (53.5)	1359 (53.5)
- Rear	1361 (53.6)	1361 (53.6)	1361 (53.6)	1361 (53.6)
Hip room - Front	1255 (49.4)	1255 (49.4)	1255 (49.4)	1255 (49.4)
- Rear	1212 (47.7)	1288 (50.7)	1288 (50.7)	1288 (50.7)
Leg room - Front	1034 (40.7)	1034 (40.7)	1034 (40.7)	1034 (40.7)
- Rear	955 (37.6)	955 (37.6)	955 (37.6)	955 (37.6)

WEIGHTS/CAPACITIES

	ZX3 3-Door Hatchback	ZX5 5-Door Hatchback	ZX4 4-Door Sedan	ZXW 4-Door Wagon
Base model curb weight <small>kg (lb.)</small>	1204 (2654)	1238 (2729)	1214 (2677)	1256 (2768)
Cargo capacity <small>litres (cu. ft.)</small>				
- Rear seat up	538 (19.0)	538 (19.0)	396 (14.0)	991 (35.0)
- Rear seat down	801 (28.3)	801 (28.3)	—	1580 (55.8)
Fuel tank <small>litres (U.S. gal.)</small>	53 (14.1)	53 (14.1)	53 (14.1)	53 (14.1)
Passengers	5	5	5	5

POWERTRAINS

Engine	2.0L Duratec 20 I4	2.3L Duratec 23 I4
Valvetrain	16-valve DOHC	16-valve DOHC
Horsepower <small>SAE net</small>	136 @ 6000 rpm	151 @ 5750 rpm
Torque <small>SAE net lb.-ft.</small>	133 @ 4500 rpm	154 @ 4250 rpm
Fuel injection system	Sequential multi-port electronic	Sequential multi-port electronic
Standard transmission	5-speed manual	5-speed manual
Optional transmission	4-speed automatic	—

SERIES FEATURES

	S	ZX3 and ZX4
	SE	ZX3, ZX4 and ZXW
	SES	ZX4, ZX5 and ZXW
	ST	ZX4
		POWERTRAIN/DRIVETRAIN
• • • •	•	2.0L Duratec 20 DOHC engine
— — — •	•	2.3L Duratec 23 DOHC engine
• • • •	•	5-speed manual transmission
• • • •	•	4-speed automatic transmission
• • • •	•	Front-wheel drive
		CHASSIS
— — • •	•	All-speed traction control
		Brakes
• • • •	•	Power front disc/rear drum
— — — •	•	Power 4-wheel disc
• • • •	•	4-wheel anti-lock brake system (ABS)
		Steering
• • • •	•	Power rack-and-pinion
		Suspension
• • • •	•	Front - Independent MacPherson strut with stabilizer bar
• • • •	•	Rear - Independent Control Blade short- and long-arm (SLA)
— — — •	•	Rear stabilizer bar (Standard on all ZXW models)
— — — •	•	European sport-tuned suspension

S ZX3 and ZX4

SE ZX3, ZX4 and ZXW

SES ZX4, ZX5 and ZXW

ST ZX4

Tires

- • • • - P195/60R15 BSW all-season (Standard on all ZXW models)
- — • • - P205/50R16 BSW all-season (Not available on all ZXW models)
- • • • - Mini Spare

Wheels

- • • • - 15" steel with 9-spoke wheel cover
- • • • - 15" steel with 7-spoke wheel cover (Late availability)
- • • • - 15" multi-spoke alloy (Standard on ZXW SES)
- — • • - 16" 5-spoke alloy
- — • • - 16" 5-spoke machined alloy (Not available on ZX4)

EXTERIOR

- • • • - Alarm system - Perimeter (Not available on ZX3 models)
- — • • - Exhaust - Chrome-tipped
- • • • - Fog lamps
- • • • - Glass - Solar-tinted
- • • • - Mirrors
- • • • - Dual manual remote-control
- • • • - Dual power
- • • • - Dual power heated (Not available on ZX3 models)

- — • • - Mouldings - Bodyside
- • • • - Body-colour
- • • • - Remote keyless entry system

- • • • - Roof rails (No cross bars) (Standard on all ZXW models)

- • • • - Spoiler - Rear decklid

- (Included in SE Sport Group on ZX4 SE and standard on ZX4 SES)

Windshield wipers

- • • • - 2-speed, fixed intermittent
- • • • - 2-speed, variable intermittent
- • • • - Rear window wiper/washer (Standard on ZX3 and ZX5 only)

INTERIOR

Air bags

- • • • - Personal Safety System™ with dual-stage driver and front passenger air bags, Occupant Classification Technology
- • • • - Front side-impact air bags
- • • • - Air conditioning - Manual

Audio systems

- • • • - AM/FM stereo with single-disc CD player
- • • • - AM/FM stereo with in-dash 6-disc CD changer/MP3 player
- • • • - Audiophile AM/FM stereo with in-dash 6-disc CD changer/MP3 player and Sony® Sound (Not available on ZXW models)
- • • • - Duplicate steering column-mounted audio controls

Battery Saver

- • • • - Cargo area cover (Standard on all ZXW models)

Console

- • • • - Front floor with storage
- • • • - Front floor with storage and armrest
- • • • - Overhead with maplights and dual storage bins (Not available with moonroof)

Decklid/liftgate release

Door locks

- • • • - Power
- • • • - Childproof (rear) (Not available on ZX3 models)

Floor mats - Carpeted

- • • • - Front only (Standard on ZX3 SE)
- • • • - Front and rear (Not available on ZX3 SE)

Instrument panel

- • • • - Analog cluster with trip odometer
- • • • - Tachometer
- • • • - 12V powerpoint
- • • • - Storage bin and 6-CD holder

Lighting

- • • • - Front map/reading lamps
- • • • - Mirror - Rearview, day/night
- • • • - Moonroof - Power (Deletes overhead console)
- • • • - With overhead map/reading lights

S ZX3 and ZX4

SE ZX3, ZX4 and ZXW

SES ZX4, ZX5 and ZXW

ST ZX4

INTERIOR (cont'd)

Safety belts

- • • • - Front: 3-point height-adjustable
- • • • - Rear: 3-point

Speed control

- • • • - SecurLock® anti-theft system

Steering wheel

- • • • - 4-spoke soft feel (Not available on ZX3 SE)
- • • • - Leather-wrapped
- • • • - Tilt/telescoping

Visors

- • • • - With covered driver and front passenger vanity mirrors

Windows

- • • • - Power, with express-down driver window

SEATING

- • • • - Front cloth bucket seats with adjustable front head restraints
- — • • - Front sport cloth bucket seats with Black/Red fabric inserts and adjustable head restraints
- • • • - Height adjustable driver seat
- • • • - Heated front seats (Not available on ZX3)
- • • • - 60/40 split folding rear seatback with flip-up seat cushion
- • • • - Rear-seat head restraints
- • • • - Leather seating surfaces (Optional on ZX3 SE)
- — • • - Leather seating surfaces with suede trim

• = Standard ◯ = Optional — = Not Available | = Included In an Equipment Group or Package

S ZX3 and ZX4

SE ZX3, ZX4 and ZXW

SES ZX4, ZX5 and ZXW

ST ZX4

EQUIPMENT GROUPS AND PACKAGES

- ◯ — • - Canadian Winter Package (Not available on ZX3 SE)

- Heated front seats
- Heated power side mirrors

- • • • - Canadian Winter Package Plus

- Heated front seats
- Heated power side mirrors
- 4-wheel anti-lock brake system (ABS)
- All-speed traction control

- ◯ • • • - Comfort Group

- Tilt/telescoping steering wheel
- Speed control
- Duplicate steering column-mounted audio controls
- Rear seat head restraints

- ◯ • • • - Power Group

- Power windows
- Power side mirrors

- • • • - SE Sport Group

- 15" multi-spoke alloy wheels
- Fog lamps
- Rear decklid spoiler (ZX4 only)
- Tachometer
- Leather-wrapped steering wheel

- ◯ — — • - Security Group

- 4-wheel anti-lock braking system (ABS)
- Front side-impact air bags

† Includes Red contrast stitching

GENUINE FORD ACCESSORIES



Keyless Entry Keypad



Remote Starter



Ski Rack



Bike Carrier



Chrome Tip Exhaust

Features

INTERIOR COLOURS

Charcoal (upper) / Charcoal (lower)
Charcoal (upper) / Light Flint (lower)
Dark Flint (upper) / Light Flint (lower)
Dark Pebble (upper) / Light Pebble (lower)

EXTERIOR COLOURS ZX3 & ZX5

- CD Silver Clearcoat Metallic
- Cloud 9 White Clearcoat
- Egg Yolk Yellow Clearcoat
- Infra-Red Clearcoat
- Light Tundra Clearcoat Metallic
- Liquid Grey Clearcoat Metallic
- Blazing Copper Clearcoat Metallic
- Pitch Black Clearcoat
- Sangria Red Clearcoat Metallic
- Sonic Blue Clearcoat

ZX4 & ZXW (except ZX4 ST)

- Arizona Beige Clearcoat Metallic
- CD Silver Clearcoat Metallic
- Cloud 9 White Clearcoat
- French Blue Clearcoat Metallic
- Infra-Red Clearcoat
- Light Tundra Clearcoat Metallic
- Liquid Grey Clearcoat Metallic
- Pitch Black Clearcoat
- Sangria Red Clearcoat Metallic
- Sonic Blue Clearcoat

ZX4 ST

- CD Silver Clearcoat Metallic
- Infra-Red Clearcoat
- Light Tundra Clearcoat Metallic
- Pitch Black Clearcoat



Charcoal/Charcoal Cloth
(ZX3 & ZX5)



Charcoal with Sport Fabric Inserts/Charcoal Cloth
(ZX4 ST)



Charcoal/Charcoal Leather
(ZX5)



Charcoal/Charcoal with Suede Trim Leather
(ZX4 ST)



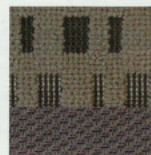
Light Flint/Charcoal Cloth
(ZX3 & ZX5)



Charcoal/Light Flint Leather
(ZX5)



Light Flint/Dark Flint Cloth
(ZX4 SES & SE, ZXW SE)



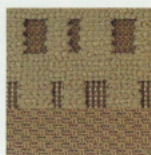
Light Flint/Dark Flint Cloth
(ZX4 SES & ZXW SES)



Dark Flint/Light Flint Leather
(ZX4 SES & ZXW SES)



Light Pebble/Dark Pebble Cloth
(ZX4 S & SE, ZXW SE)



Light Pebble/Dark Pebble Cloth
(ZX4 SES & ZXW SES)



Dark Pebble/Light Pebble Leather
(ZX4 SES & ZXW SES)

WHEELS



15" 9-spoke wheel cover
(ZX3 S & SE, ZX4 S & SE)



15" multi-spoke alloy
(Standard on ZXW SES, optional on SE Sport Package)



15" 7-spoke wheel cover
(optional on SE, later availability)



16" 5-spoke alloy
(Standard on ZX4 and ZX5 SES)



16" 5-spoke machined alloy
(ZX4 ST)

EXTERIOR COLOURS



Arizona Beige Clearcoat Metallic
(ZX4* & ZXW)



CD Silver Clearcoat Metallic
(All models)



Cloud 9 White Clearcoat
(ZX3, ZX5, ZX4* & ZXW)



Egg Yolk Yellow Clearcoat
(ZX3 & ZX5)



French Blue Clearcoat Metallic
(ZX4* & ZXW) (Not available on S series)



Infra-Red Clearcoat
(All models) (Not available on S series)



Light Tundra Clearcoat Metallic
(ZX3, ZX5, ZX4* & ZXW) (Not available on S series)



Liquid Grey Clearcoat Metallic
(All models) (Not available on S series)



Blazing Copper Clearcoat Metallic
(ZX3 & ZX5)



Pitch Black Clearcoat
(All models)



Sangria Red Clearcoat Metallic
(ZX3, ZX5, ZX4* & ZXW)



Sonic Blue Clearcoat
(ZX3, ZX5, ZX4* & ZXW) (Not available on S series)

* Except ZX4 ST

OUR COMMITMENT TO YOU

PEACE-OF-MIND PROTECTION FOR YOUR NEW 2005 FORD VEHICLE

New-Vehicle Limited Warranty
3 years / 60,000 km

Powertrain Warranty
5 years / 100,000 km

Corrosion Warranty
5 years / Unlimited distance

Roadside Assistance at No Additional Charge
3 years / 60,000 km

Certain conditions apply. Go to ford.ca or ask your local Ford of Canada Dealer for more information on these warranties and coverages.

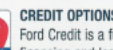
ford.ca

For more information about Ford of Canada and Ford products, visit our website.

PROMPT, COURTEOUS ANSWERS TO YOUR QUESTIONS

Please call our Customer Relationship Centre for any additional information you require on Ford vehicles, warranties, programs or other matters.

Ford Customer Relationship Centre: 1-800-565-FORD (3673)



CREDIT OPTIONS TO SUIT YOUR NEEDS

Ford Credit is a full-service automobile finance company offering a wide variety of financing and leasing programs to every qualified buyer.

Ford Credit Customer Service Centre: 1-877-636-7346

OUR COMMITMENT TO THE COMMUNITY

Ford of Canada and its Dealers are proud to support the following community initiatives across Canada.

Canadian Breast Cancer Foundation

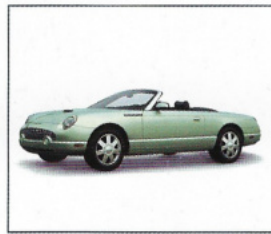
Juvenile Diabetes Research Foundation

SMARTRISK™

Competitive comparisons are based on publicly available information and Ford data at the time of printing. Some features discussed may be optional. Vehicles shown may contain optional equipment. Features shown may be offered only in combination with other options or subject to additional ordering requirements or limitations. Following publication of this catalogue, certain changes in standard equipment, options and the like, or product delays, may have occurred which would not be included in these pages. Your Ford of Canada Dealer is your best source for up-to-date information. Ford Motor Company of Canada, Limited, reserves the right to change product specifications at any time without incurring obligations. This catalogue is printed using vegetable inks on recycled paper containing 10% de-inked post-consumer materials. Colours may not be exactly as illustrated due to restrictions of the printing process. Please see your sales consultant for specific colour and model availability.



2005 Focus



2004 Thunderbird



2005 Mustang



2004 Marauder



2004 Taurus



2005 Five Hundred



2004 Grand Marquis



2004 Freestar



2005 Freestyle



2005 Escape



2004 Explorer Sport Trac



2004 Explorer 4-Door



2004 Expedition



2004 Excursion



2004 Ranger



2004 F-150



2004 F-Series Super Duty



2004 E-Series

THE MOMENTUM OF OUR PAST
PROPELS US INTO THE FUTURE



Ford Motor Company
100 YEARS IN CANADA ~ 100 ANS AU CANADA