



IMPORTANT!

This brochure has been compiled by Daimler AG of Germany or one of its Group Companies to provide a general indication only of the range of vehicles, optional extras (for example satellite navigation systems, interface and telecommunication kits), accessories, merchandise and/or products (together, the range is known as the “Products”) available in various countries. Some of the Products shown may not be available in Australia, or may only be available in a different specification. Additionally, some Products may only be available in combination with others. Colours may differ slightly from those shown in the brochure, owing to the limitations of the printing process. Products available while stocks last. Changes may have been made to the Products since this brochure was printed. The information in this brochure is therefore indicative, illustrative and provided only for guidance and should not be relied upon. For current information on the availability, design, features and prices of Products available in Australia you should contact your local authorised Mercedes-Benz Dealer.

Please note: changes may have been made to the products since this brochure went to press (01.09.2006). The manufacturer reserves the right to make changes to the design, form, colour and specification during the delivery period, provided these changes, while taking into account the interests of the vendor, can be deemed reasonable with respect to the purchaser. Where the vendor or the manufacturer uses symbols or numbers to describe an order or the subject of an order, no rights may be derived solely from these. The illustrations may show accessories and items of optional equipment which are not part of standard specification. Colours may differ slightly from those shown in the brochure, owing to the limitations of the printing process. This brochure has been compiled by DaimlerChrysler AG of Germany and is distributed internationally. It provides a general indication of the range of models, features, optional extras and/or colours available in various countries. Some of the models, features, optional extras and/or colours may not be available in your country or may only be available in a different specification. Additionally some models, features, optional extras and/or colours may only be available in combination with others. For current and more specific information in relation to the range of models, features, optional extras and/or colours available in your country, and their pricing, you should contact your nearest authorised Mercedes-Benz Passenger Car Dealer.

Mercedes-Benz Accessories GmbH, Stuttgart - A DaimlerChrysler AG company
3230 · 1220 · 02-01/0906 · Printed in the Federal Republic of Germany



Genuine accessories for the GL-Class

September 2006



Mercedes-Benz

TOP

20 - 31

Carrier systems
Load compartment accessories

INSIDE

10 - 19

Interior appointments
Telematics
Child safety
AMG accessories

BASE

04 - 09

Light-alloy wheels
Bodystyling accessories

32 - 35

COLLECTION



Genuine Mercedes-Benz accessories for your GL-Class

Get to know the Mercedes-Benz GL-Class and discover a whole new meaning for the word "impressive". Our new cross-country vehicle catapults everything you know and love about Mercedes-Benz into a new dimension. Comfort, innovation and reliability - in short, an exceptionally impressive vehicle - in large format.

But the GL-Class isn't just about size and stature - it's also particularly versatile. Genuine accessories from Mercedes-Benz make the most of its potential in an extremely effective and elegant way.

The new ► **crossbars**, for example, not only provide a basis for attaching the ► **Mercedes-Benz roof boxes** but serve as a stylish visual highlight too.

The highlights continue inside, where you can connect your personal jukebox to the audio system using the ► **iPod® Interface Kit** and select your favourite tracks via an exquisite ► **wood/leather steering wheel**.

And if grand designs are more your style, opt for one of the exclusive ► **incenzo designer wheels** in sizes up to 20".

Whichever way you look at it, you're only one step away from some big ideas - simply turn the page and start browsing.



1 ▶ Protective side bars with step plates [p 7] | 2 ▶ Tyndarides **incenio** designer wheel [p 6] | 3 ▶ Set of chrome-look indicators [p 9] |

4 ▶ Simulated underride protection, stainless steel [p 6]



▼ BASE

incenio

Mercedes-Benz designer wheels

▶ If you are interested in giving your imposing GL-Class an individual touch, you have come to the right place: add distinctive highlights with **incenio** designer wheels, in sizes up to a majestic 20", and perfectly coordinated accessories such as the chromed door handle recesses or the electropolished stainless steel protective side bars.

All of these products are designed to ensure you get even more pleasure out of your GL-Class before and after each journey. During goes without saying.



Simulated underride protection, front/rear

Attractive, eye-catching feature made from stainless steel. Powerfully underlines the SUV character of the vehicle. Available separately for front and rear

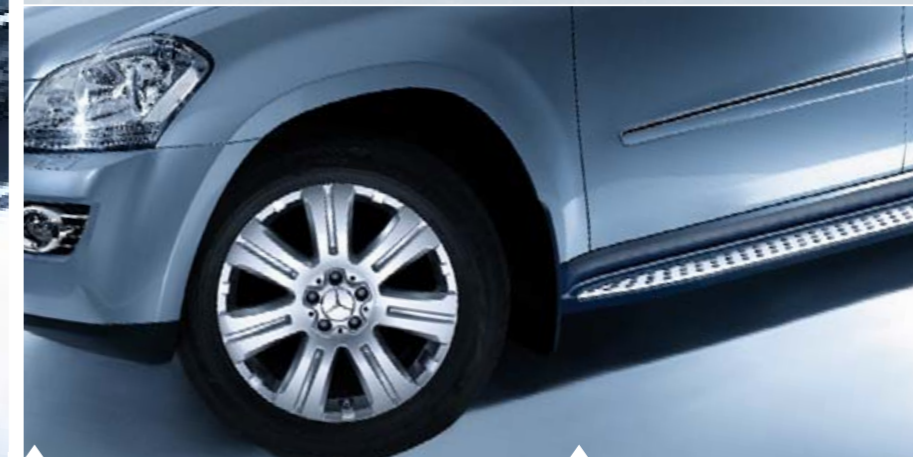


Tyndarides | 5-spoke wheel

incenio designer wheel
Finish: sterling silver
Wheel: 8.5 J x 20 ET 56
Tyre: 275/50 R20

Protective side bars with step plates

Made from electropolished stainless steel. Plastic step plates make getting in and out and loading the roof easier



Aldhanab | 7-spoke wheel

incenio designer wheel
Finish: sterling silver
Wheel: 8.5 J x 19 ET 56
Tyre: 275/55 R19 | M+S* 265/55 R19
*Winter tyre

Running board with rubber studs

An elegant addition to your GL-Class. Made from stainless steel with non-slip rubber studs

Chromed door handle recesses

Round off your GL-Class's chrome finish and protect the paintwork from scratches. Available as a 4-piece set



Mercedes-Benz light-alloy wheels

Standard and optional



5-twin-spoke wheel

Finish: titanium silver
 Wheel: 8.5 J x 19 ET 56
 Tyre: 275/55 R19 | M+S* 265/55 R19
 *Winter tyre

5-spoke wheel*

Finish: titanium silver
 Wheel: 8 J x 18 ET 53
 Tyre: 265/60 R18
 *Not for GL 320 CDI. Not in conjunction with electrically folding 3rd seat row (Code 845)

Mud flaps

Protect the underbody and the sides of the car from loose chippings and dirt. For front and rear axles



Rudmatic snow chain system with grip links

Quick and easy to fit | not pictured |



Hub caps

Protect the hub from dirt.
 Available in the following versions:
 [1] Classic Roadster design in blue
 [2] Sterling silver with chrome star
 [3] Titanium silver with chrome star



Rim locks

Set consisting of coded key and 1 lock per wheel



Valve caps

Wheel bolts | not pictured |



Set of chrome-look indicators

Mirrored indicator bulbs round off the chrome finish of your GL-Class to perfection | standard equipment pictured left |

5-spoke wheel

Finish: titanium silver
 Wheel: 8.5 J x 20 ET 56
 Tyre: 275/50 R20

BASE



1 ▶ Wood/leather steering wheel [p 12] | 2 ▶ COMAND APS [p 16] | 3 ▶ iPod® Interface Kit [p 18]

▶ INSIDE



If you've ever enjoyed the smooth feel of a steering wheel made from exquisite wood, you won't need any further convincing.

But did you know that you can now use this high-tech accessory to operate your iPod?

In the GL-Class individual charm and innovative functionality always go hand in hand.



Wood/leather steering wheel

Wood: burr walnut | Leather: alpaca grey

The wood/leather steering wheels are available in various colours and woods to match the interior



Illuminated door sill panel

High-quality, single-piece door sill panel made from ground stainless steel. The blue illuminated Mercedes-Benz lettering is activated every time you open the door to get in or out. Available as set of 2 for front doors



Rubber mats, rep mats, velour mats

Durable, hardwearing materials. Available in various colours to match the interior. Can be clip-fastened to the floor of the vehicle to prevent slipping



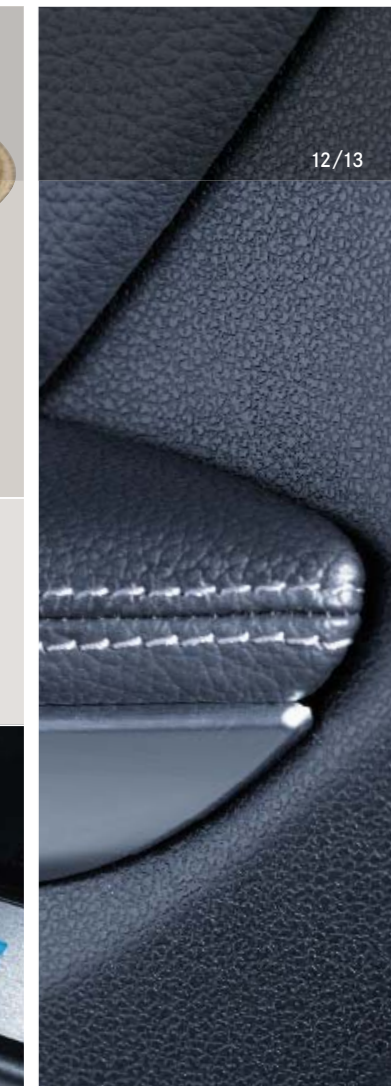
AMG floor mats

Embroidered with AMG lettering



AMG door sill panel, illuminated

Available in brushed stainless steel





“KID” child seat

Booster seat with height-adjustable backrest. The belt guides at the sides prevent the lap belt from sliding over the child's abdomen. Available with automatic child seat recognition as an option. For children between the ages of around 3.5 and 12 (approx. 15 to 36 kg). Removable, washable “DaimlerSquare” cover



Additional interior mirror

Designed to help you keep an eye on what's going on in the rear of the car. Made from shatterproof safety glass. Simple to snap into place – so screw connections

Mercedes-Benz child seats are available with automatic child seat recognition as an option. If your car also has automatic child seat recognition, the technology automatically deactivates the front passenger airbag when a child seat with automatic child seat recognition is installed on the front passenger seat. All child seats are also suitable for use in vehicles without ISOFIX attachment points.

For further information on the Mercedes-Benz child safety range, ask your Mercedes-Benz dealer for a copy of our separate brochure



“DUO plus” child seat

Optimum safety for children between the ages of around 8 months and 4 years (9 to 18 kg). Fitted as standard with top tether, an additional belt for securing the head section, a height-adjustable shoulder belt and ventilation channels. With automatic child seat recognition and ISOFIX attachment points. Adjustable tilt. Removable, washable “DaimlerSquare” cover



“BABY-SAFE plus” child seat

Deep, moulded seat design offers extra side-impact protection for optimum safety. Special padding, designed to protect particularly vulnerable body areas of small children up to around 15 months (13 kg). Removable, washable “DaimlerSquare” cover



Back cushion

Ergonomic, individually adjustable cushion, designed to support the back on long journeys. Available in anthracite

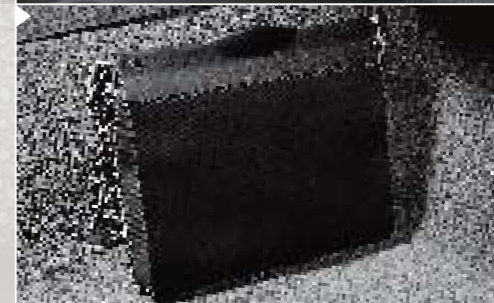
Spectacles box

Universal – adjusts to different sizes of spectacles/sunglasses



Cleanbag

The ideal way to keep the interior clean when you're on the move: the “Cleanbag” is simply attached to the net in the front passenger footwell or to the net pockets on the back of the front seats



Coat hanger

Robust coat hanger made from chromed metal and plastic. Easy to fit to the front head restraints. The ideal way to transport items of clothing without creasing them



Vario bag

Plenty of extra stowage space for the really important things in life. Available in three designs:
[1] “DaimlerSquare” fabric (see above)
[2] “Angel & Driver” fabric (not pictured)
[3] Alcantara, java (not pictured)



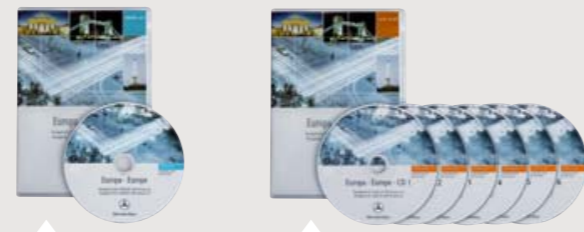
COMAND APS

Top-class car hi-fi combined with intelligent navigation technology. Can be operated using multifunction steering wheel. 6.5" TFT colour display, double tuner for FM, MW, LW and SW, 4-channel amplifier (4 x 50W) for outstanding sound quality, CD changer controls. The integral drive reads both audio CDs and navigation DVDs (for map-based navigation throughout Europe). Dynamic route guidance possible, taking into account traffic information supplied by radio



Audio 50 APS

Navigation system and car hi-fi combined in one unit. Dynamic route guidance using free traffic information via RDS/TMC. Navigation arrows shown on 4.9" TFT colour display. Audio part equipped with double-tuner receiver for FM, MW, LW and SW, 4-channel amplifier, CD slot for audio CDs or navigation CD plus CD changer controls. Can be operated via the multifunction steering wheel



Europe navigation DVD for COMAND APS

The whole of Europe on one DVD

Europe navigation CDs for Audio 50 APS

Six CD-ROMs for navigation throughout Europe

The data for the Mercedes-Benz navigation systems is regularly updated. Please contact your Mercedes-Benz dealer for the latest updates

For further information about using the phone while in your car, see our Telematics brochure. Ask your Mercedes-Benz dealer for a copy



Mobile-phone holders

When it comes to selecting a mobile for your Mercedes-Benz, you've never had so much choice. One "click" is all it takes to replace the system's intelligent mobile-phone holder. It takes a matter of seconds and is as straightforward a process as inserting the mobile into the holder itself. Changing your mobile and even alternating between different models of mobile no longer presents a problem. There are no compromises when it comes to convenience-enhancing technology either: the telephone can be operated via the multifunction steering wheel, and the telephone status and call information are displayed in the central multifunction display - as you would expect



Mercedes-Benz Bluetooth® (SAP¹) telephone module

Provides a wireless connection between your mobile phone and your Mercedes-Benz hands-free system. It couldn't be more convenient - simply leave your mobile in your jacket pocket. Two versions of the module are available: a handset version [A] which offers Privacy mode, bypassing the on-board loudspeakers, or a closed box version [B] | compatible with Bluetooth mobile phones |

To use a mobile-phone holder, your car must be factory-fitted with one of the two following optional extras:

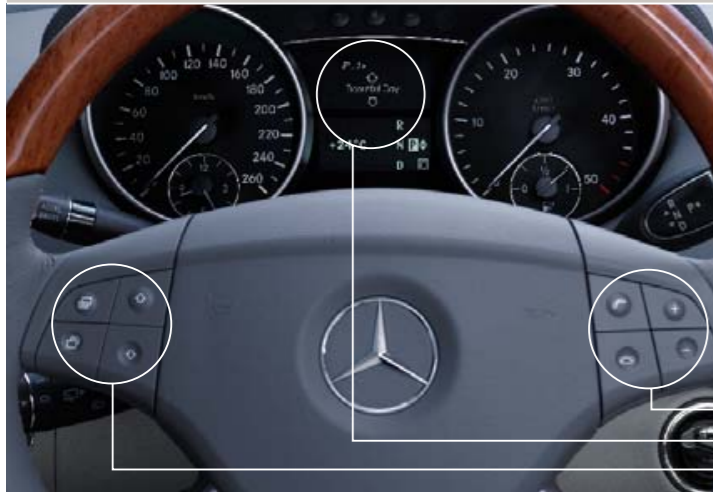
- ▶ Code 386 Pre-installation for mobile phone with universal interface
- ▶ Code 388 Mercedes-Benz mobile phone with universal interface

Holders are available for many popular Nokia, Sony Ericsson and Siemens mobile phones. The range of mobile-phone holders is constantly being extended. Please contact your Mercedes-Benz dealer for details



Siemens	S65, S75, SP65, SK65, SL75, CX65, CXT65, CX65V, CX70, CXT70, CX70V, CX75, M75, ME75
Nokia	6100, 6210, 6220, 6230, 6230i, 6310, 6310i, 6610, 6610i, 7250i, 6020, 6021, 6820, 6822, 3120
Sony Ericsson	T610, T630, W800i, K750i

¹ SAP (SIM Access Profile) allows the module to read your mobile phone's SIM card



Mercedes-Benz iPod® Interface Kit*

It's never been easier to take your favourite music with you when you're on the move. The Mercedes-Benz Interface Kit provides an elegant and functional way to integrate your iPod into your GL-Class's audio system. The iPod is connected to the system inside the glove compartment, where it is hidden from prying eyes. While you're on the move, you can scroll through the playlists, select songs and adjust the playback volume using the buttons on the multifunction steering wheel. Your iPod's battery is also recharged. The current status of your iPod appears in the central driver's display, helping you to keep your attention focused on the traffic.

- It's easy to control your iPod via the multifunction steering wheel:
- Adjust the volume, playback
- Display current artist/title
- Select the iPod menu and scroll through the options



Rear-seat entertainment system

Innovative rear-seat entertainment system, consisting of a DVD player, a high-resolution 7" LCD colour display and two sets of headphones. The system is easy to operate by remote control and is available in black, alpaca grey and cashmere beige



Remote control

Headphones



* The iPod Interface Kit and the iPod holder are compatible with the following models:

- iPod (from 3rd generation)
- iPod video
- iPod photo
- iPod U2
- iPod mini
- iPod nano



iPod (from 3rd generation), iPod video, iPod photo, iPod U2

iPod mini

iPod nano

iPod holder

Black plastic holder for the glove compartment. Holds your iPod in place. Soft, flock surface protects the player from scratches and prevents it sliding around



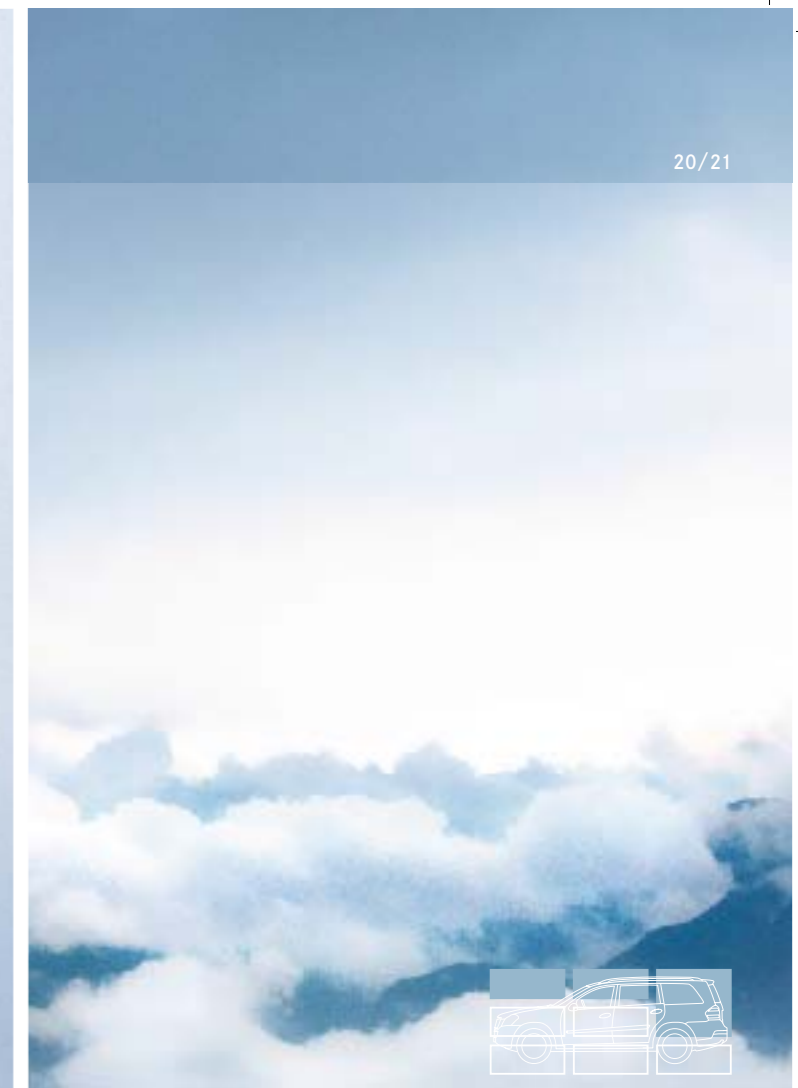
CD changer

Compact and convenient changer for up to 6 CDs. Plays conventional audio CDs and CDs of audio files in MP3 format

INSIDE



1 ▶ Mercedes-Benz roof box XL [p 26] | 2 ▶ Crossbars [p 22]



▲ TOP

To transport cycles on the roof,
please use New Alustyle basic carrier
bars (see page 24)

▶ The GL-Class's capacity to cater to an active lifestyle is virtually unrivalled. Pictured here are a few suggestions to help you make even more intensive use of the space it offers.

Like the new crossbars pictured here, our genuine accessories not only blend seamlessly with the vehicle but round off your GL-Class's styling to perfection.



Crossbars

Robust yet attractive: the new crossbars offer a secure hold for the New Alustyle ski and snowboard rack* and the Mercedes-Benz roof boxes. And even when unladen they accentuate the individual, sporty look of your GL-Class. The crossbars are available in black or with a high-shine chromed finish to match your roof rails

* Ski and snowboard rack "Comfort" in conjunction with adapter B6 687 0115. No adapter required for ski and snowboard rack "Standard"



Transport and stowage bag

for crossbars and New Alustyle basic carrier bars

Robust bag, made from a high-quality nylon fabric. Protects the basic carrier bars or crossbars and makes it easier to transport them



New Alustyle ski and snowboard rack "Comfort"* for crossbars and New Alustyle basic carrier bars

For up to six pairs of skis or four snowboards. Lockable.
Practical pull-out function makes loading and unloading easier



New Alustyle ski and snowboard rack "Standard" for crossbars and New Alustyle basic carrier bars

For up to four pairs of skis or two snowboards. Lockable



Transport and stowage bag

for crossbars and New Alustyle basic carrier bars

Robust bag, made from a high-quality nylon fabric. Protects the basic carrier bars or crossbars and makes it easier to transport them

New Alustyle basic carrier bars

suitable for all roof-mounted carriers

The New Alustyle system opens up a wealth of flexible options when it comes to transporting sports equipment and luggage. Simply combine the New Alustyle basic carrier bars with a variety of different roof-mounted carriers. The basic carrier bars ensure the highest degree of safety and optimum aerodynamics

Mountain Bike

High-end Mountain Bike, offering supreme roadholding and optimum climbing ability. Shimano Deore LX Dual Control gears and hydraulic disc brake, Suspa oil/elastomer damping.

Mercedes-Benz carrier available as an option

Automatic Bike

Safety and comfort on two wheels: innovative bike technology with intelligent light system plus Cyber NEXUS gear system by Shimano, controlled via onboard computer. This fully automatic system reliably takes care of the gear changes for you



The convenient design of the Mercedes-Benz bicycle rack allows the cycle to be attached at ground level. The cycle is simply mounted on the rail alongside the vehicle and both are then fitted to the basic carrier bars



Carbon Bike

Impressive technology on two wheels: high-end sports cycle made from materials tested in the aerospace industry. Ultra-lightweight monocoque frame made from carbon (8.3 kg), with Dura-Ace gear system by Shimano. Limited edition of 199. Not in conjunction with New Alustyle rear-mounted bicycle rack

New Alustyle bicycle rack

(can only be fitted to basic carrier bars)

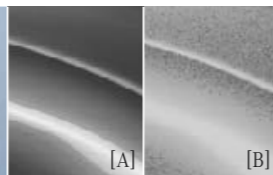
Up to four bicycle racks can be fitted per pair of basic carrier bars. Each bicycle rack can hold one bicycle with a max. frame diameter of 98 mm (tubular frames) or 110 x 70 mm (oval frames). The support frame folds down when not in use, reducing drag when travelling without cycles. The cycles can either be attached to the rack once it has been fitted to the roof or before it is fitted | also pictured above left |

Coil lock

Designed to prevent theft. Available as an option for the bicycle rack

For further details, please see our "Mercedes-Benz Bikes" brochure. For more bikes, see page 28

▲ TOP



Mercedes-Benz roof boxes

for crossbars and New Alustyle basic carrier bars

Elegant, aerodynamic design, made for your Mercedes-Benz. High-quality, extremely durable material. Available in two colours: titanium metallic [A] and matt silver [B]

[1] Mercedes-Benz roof box XL

| family box | Capacity: approx. 450 litres. Available with opening on right or left. Optionally available accessories: luggage set and ski rack insert | pictured below |

[2] Mercedes-Benz roof box L

| sports box | Capacity: approx. 330 litres. Available with opening on right or left. Optionally available accessories: luggage set and ski rack insert | pictured below |

[3] Mercedes-Benz roof box M

| weekend box | Capacity: approx. 400 litres. Available with opening on right or left



Ski rack insert

A secure hold for up to five pairs of skis | for Mercedes-Benz roof box XL, above | A secure hold for up to three pairs of skis | for Mercedes-Benz roof box L, not pictured |



Luggage set | for Mercedes-Benz roof box L |

Four bags made from hardwearing, water-repellent polyester. Tailored to the dimensions of the roof box L



Luggage set | for Mercedes-Benz roof box XL |

Four bags, designed to make perfect use of the space available in the roof box XL. Made from hardwearing, water-repellent polyester. Plus two matching ski bags, each designed to hold max. two pairs of skis. Ski bags also available separately



Ski bag for interior

For up to two pairs of skis. With carrying straps and elasticated straps for attaching to load-securing rings in the load compartment



Crossbars with roof box XL

| see left and page 22 |



The laden bicycle rack can be pivoted downwards, allowing the load compartment to be opened

When rack is unladen, simply fold down the vertical bar to gain access to the load compartment



New Alustyle rear-mounted bicycle rack for trailer coupling

The rear-mounted bicycle rack is easy to attach to the trailer coupling. A simple fold-down mechanism (above left) means that the load compartment can still be opened. Basic version for two cycles. Lockable
Optional extension for a third cycle available | not pictured |



Adapter
For trailer with 7-pin plug

Trailer coupling
Detachable.
Max. drawbar load: 140 kg
Towing capacity, braked: 3,500 kg, unbraked: 750 kg



Safety tow rod
2-piece steel rod with patented connector and cotter pin.
For trailer couplings and towing eyes. Approved for vehicles with a gross vehicle weight of up to 3.2 t



Fitness Bike, Sport | above left |
Fitness Bike, Comfort | above right |

These sporty and elegant Fitness Bikes, with their exclusive Mercedes-Benz design, are suitable for everyday all-round use and for touring. Extremely robust, trekking-design aluminium frame, RST suspension fork, Shimano Deore gears and disc brake



The range of genuine accessories features plenty of other useful aids, including jump leads and fire extinguisher mounting. See your Mercedes-Benz dealer for details

Box of replacement bulbs

Practical and readily at hand when needed.
All the right bulbs, supplied in protective packaging



Fluorescent jacket

Already compulsory in many countries, the bright orange and yellow fluorescent jackets with reflective stripes are conspicuous even in the dark. Pack of two



Charger with trickle charge function

With its cutting-edge technology, the Mercedes-Benz charger ensures the longest possible life for the battery

Shallow boot tub

Non-slip, suitable for transporting foodstuffs, precision fit



Deep boot tub

The boot tub helps keep the load compartment clean. Non-slip. Suitable for transporting foodstuffs

Stowage crate

Can be divided into four sections using the adjustable partitioning elements. Ideal for transporting objects you don't want to tip over or slide around. Only in conjunction with the shallow boot tub

Partition net

Separates the load compartment from the passenger compartment

Rectifier

Allows the Mercedes-Benz coolbox and the coolbag to be connected to 220V socket at home



Shopping crate

anthracite | Collapsible



Luggage-securing feature

Ingenious solution to the problem of luggage which slides around in the boot. Attaches securely around the object in question thanks to Velcro fastening



Non-slip mat

black | Non-slip, precision-fit mat made from oil and acid-resistant polyester



Reversible mat with load sill protection

This reversible mat features high-quality velour on one side and non-slip rubber on the other. It not only helps keep the original floor of the load compartment clean but also protects the load sill from scratches



Coolbag

black | Capacity: 12 litres. 12V connection for cigarette lighter or optional socket in load compartment



Coolbox

blue/white | Robust hard case. 16.5-litre capacity. 12V connection for cigarette lighter or optional socket in load compartment

Luggage nets

Available for the floor of the load compartment and the load sill. Prevent lightweight objects from sliding around during your journey



Tie-down strap

Even heavy objects can be secured in place easily using this strap



1 ▶ Key ring [p 35] | 2 ▶ Rollerball [p 35]

COLLECTION

▶ A distinctive car.
An undaunted lifestyle.
An exclusive range of choice accessories.
It's good to know your mind.



Calfskin handbag
Zipped pocket inside.
Available in two sizes



Trolley suitcases
Mercedes-Benz by Samsonite. Hardwearing. Combination lock, reinforced corners and integral side handle
Large trolley suitcase: approx. 48 x 75 x 30 cm | approx. 121.5 l
Medium trolley suitcase: approx. 41 x 63 x 27 cm | approx. 71.5 l



Suit carrier
Mercedes-Benz by Samsonite. Hardwearing. Suit carrier with two hangers. Second zip for expanding depth from 19 to 24 cm. With shoulder strap.
Size: 57 x 50/142 x 19/24 cm



Men's wallet
Made from black calfskin
Ten credit card slots



Men's and women's "tonneau" watches
Swiss made. Water-resistant to 5 ATM. With large date feature, silver-coloured dial and matt brushed stainless steel case with screw back. Scratch-resistant, convex sapphire crystal with non-reflective coating inside. Brown leather strap. Brushed stainless steel folding clasp. Engraved with Mercedes-Benz logo



Key ring
Brushed finish. Mercedes-Benz engraved around edge. Appliquéd Mercedes-Benz star. Available in sterling silver, yellow gold and platinum

"Executive" rollerball
Sterling silver with nappa leather trim

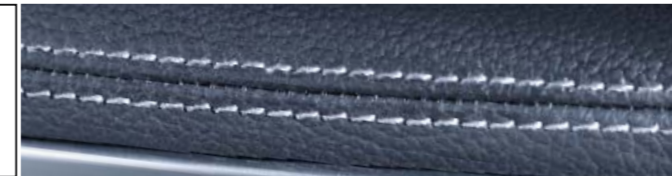
"Executive" fountain pen
Sterling silver with nappa leather trim



Rollerball
Black/silver. Carbon grip



COLLECTION



1) Finish: sterling silver

2) Finish: titanium silver

incenio designer wheels:		
B6 647 4335	Aldhanab¹ 7-spoke wheel 19"	7
B6 647 4210	Tyndarides¹ 5-spoke wheel 20"	6
Light-alloy wheels:		
B6 647 4312	5-spoke wheel² 18"	8
B6 647 0129	5-spoke wheel² 20"	9
B6 647 4211	5-twin-spoke wheel² 19"	8
B6 688 1238	Chromed door handle recesses (set of 2)	7
B6 688 1237	Chromed door handle recesses (set of 4)	7
B6 680 0040	Chrome-look indicators	9
B6 647 0120	Hub caps (Roadster design in blue)	8
B6 647 0206	Hub caps (sterling silver with chrome star)	8
B6 647 0202	Hub caps (titanium silver with chrome star)	8

B6 652 8236	Mud flaps (front set)	8
B6 652 8237	Mud flaps (rear set)	8
B6 680 0620	Protective side bars with step plates	7
B6 647 0145	Rim locks	8
on request	Rudmatic snow chain system with grip links	8
B6 680 0630	Running board with rubber studs	7
B6 688 0165	Simulated underride protection, front (not for models with M 629 engine)	6
B6 688 0167	Simulated underride protection, rear (for models with trailer coupling)	6
B6 688 0166	Simulated underride protection, rear (not for models with trailer coupling)	6
B6 647 2001	Valve caps	8
B6 647 0135	Wheel bolts	8

B6 681 8617	Additional interior mirror	14
B6 602 1031	AMG door sill panels, blue illumination (alpaca grey)	13
B6 602 1029	AMG door sill panels, blue illumination (black)	13
B6 602 1030	AMG door sill panels, blue illumination (cashmere beige)	13
on request	AMG driver's mat (LHD, anthracite)	13
on request	AMG floor mats (LHD, set of 4, anthracite)	13
on request	Audio 50 APS	16
B6 686 8212	"BABY-SAFE plus" child seat (with automatic child seat recognition)	14
B6 781 2370	Back cushion	15
B6 782 4025	CD changer (for up to 6 CDs, MP3-compatible)	19
B6 782 4020	CD changer installation kit	-
B6 781 2376	Cleanbag	15
B6 766 0046	Coat hanger	15
on request	COMAND APS	16
B6 686 8217	"DUO plus" child seat (with automatic child seat recognition)	14
on request	Europe navigation CDs	16
on request	Europe navigation DVD	16
B6 689 0143	Illuminated door sill panels (alpaca grey)	12
B6 689 0141	Illuminated door sill panels (black)	12
B6 689 0142	Illuminated door sill panels (cashmere beige)	12
B6 782 4229	iPod holder	18
B6 686 8303	"KID" child seat (with automatic child seat recognition)	14
B6 787 5840	Mercedes-Benz Bluetooth (SAP) telephone module	17
B6 782 4216	Mercedes-Benz iPod® Interface Kit (ECE)	18

on request	Mobile-phone holders	17
<small>Currently available for: Nokia 6100, 6210, 6220, 6230, 6230i, 6310, 6310i, 6610, 6610i, 7250i, 6020, 6021, 6820, 6822, 3120; Siemens S65, S75, SP65, SK65, SL75, CX65, CXT65, CX65V, CX70, CXT70, CX70V, CX75, M75, ME75; Sony Ericsson T610, T630, W800i, K750i The range is being extended all the time. Please contact your Mercedes-Benz dealer for details</small>		
on request	Rear-seat entertainment system (black)	19
on request	Rear-seat entertainment system installation kit (Region 2)	-
B6 636 0253	Rep floor mats (LHD, complete set, alpaca grey)	13
B6 636 0243	Rep floor mats (LHD, complete set, black)	13
B6 636 0248	Rep floor mats (LHD, complete set, cashmere beige)	13
B6 668 0218	Rubber floor mats (LHD, complete set, alpaca grey)	13
B6 668 0210	Rubber floor mats (LHD, complete set, black)	13
B6 668 0214	Rubber floor mats (LHD, complete set, cashmere beige)	13
B6 692 0112	Spectacles box	15
B6 642 1664	Vario bag (Alcantara, java)	15
B6 642 1663	Vario bag (Angel & Driver)	15
B6 642 1665	Vario bag (DaimlerSquare)	15
B6 629 0049	Velour floor mats (LHD, complete set, alpaca grey)	13
B6 629 0039	Velour floor mats (LHD, complete set, black)	13
B6 629 0044	Velour floor mats (LHD, complete set, cashmere beige)	13
B6 627 0889	Wood/leather steering wheel (wood: burr walnut leather: alpaca grey)	12
B6 627 0885	Wood/leather steering wheel (wood: burr walnut leather: black)	12
B6 627 0887	Wood/leather steering wheel (wood: burr walnut leather: dark java)	12

B6 685 0056	Adapter	29
B6 687 0115	Adapter for New Alustyle ski and snowboard rack "Comfort" on crossbars	23
B6 787 9015	Automatic Bike (frame height 46)	24
B6 681 0022	Box of replacement bulbs (ECE)	29
B6 787 4027	Carbon Bike (frame height 54)	24
B6 754 2023	Charger (ECE version)	29
B6 685 1706	Coil locks (for New Alustyle bicycle rack, 2, simultaneously locking)	25
B6 681 8725	Coolbag	30
B6 681 8721	Coolbox	30
B6 781 2128	Crossbars (black)	22
B6 781 2129	Crossbars (chromed)	22
B6 668 0079	Deep boot tub	30
B6 685 1113	Extension kit for New Alustyle rear-mounted bicycle rack (ECE)	28
B6 787 4011	Fitness Bike, Comfort (frame height 42)	28
B6 787 4013	Fitness Bike, Sport (frame height 48)	28
B6 658 8201	Fluorescent jacket, orange (pack of two)	29
B6 766 0097	Luggage net for floor of load compartment, long	31
B6 766 0098	Luggage net for floor of load compartment, short	31
B6 766 0111	Luggage net for load sill	31
B6 664 8220	Luggage-securing feature	31
B6 687 0095	Luggage set (for MB roof box L)	26
B6 687 0104	Luggage set (for MB roof box XL)	26
B6 687 0103	Mercedes-Benz roof box M (titanium metallic, opens on right)	26

B6 687 0093	Mercedes-Benz roof box L (titanium metallic, opens on right)	26
B6 687 0113	Mercedes-Benz roof box XL (titanium metallic, opens on right)	26
B6 787 9410	Mountain Bike (frame height 44)	24
B6 781 2125	New Alustyle basic carrier bars	24
B6 685 1711	New Alustyle bicycle rack	25
B6 685 1111	New Alustyle rear-mounted bicycle rack for trailer coupling (ECE)	28
B6 685 1703	New Alustyle ski and snowboard rack "Comfort"	23
B6 685 1702	New Alustyle ski and snowboard rack "Standard"	23
B6 768 0070	Non-slip mat, long	30
B6 768 0071	Non-slip mat, short	30
B6 766 0114	Partition net	30
B6 681 8722	Rectifier	30
B6 768 0064	Reversible mat with load sill protection, long	30
B6 768 0067	Reversible mat with load sill protection, short	30
B6 758 0001	Safety tow rod	29
B6 668 0060	Shallow boot tub	30
B6 647 0995	Shopping crate	31
B6 687 0114	Ski bag (single, for MB roof box L and XL)	26
B6 766 0022	Ski bag for interior	26
B6 687 0094	Ski rack insert (for MB roof box L)	26
B6 687 0105	Ski rack insert (for MB roof box XL)	26
B6 664 0002	Stowage crate	30
B6 647 2021	Tie-down strap	31
on request	Trailer coupling (fold-away design)	29
B6 781 2124	Transport and stowage bag	23

B6 606 0004	"Executive" fountain pen	35
B6 606 0003	"Executive" rollerball	35
B6 606 0127	Key ring	35
B6 606 2289	Large handbag	34
B6 606 0011	Large trolley suitcase (48 x 75 x 30 cm)	34
B6 606 0145	Men's "tonneau" watch	35
B6 606 2292	Men's wallet	34
B6 606 0005	Rollerball	35
B6 606 2288	Small handbag	34
B6 695 7049	Small trolley suitcase (41 x 63 x 27 cm)	34
B6 695 7047	Suit carrier	34
B6 606 0144	Women's "tonneau" watch	35