

 **TOYOTA HIACE**
oh what a *feeling!*

The Trademark of the Professional.





Long Wheel Base model shown.



Super Long Wheel Base model shown.



Trademark of the professional.

HiAce has been building its reputation for longer than most have been building their businesses. And as any professional knows, when you build a better product, people stick with you.

For over sixteen years in Australia, HiAce has been the most respected van in the trade with over 3.7 million vehicles sold. Toyota listened to what buyers wanted now and in the future, whether government, fleet or private operators and set out to build a van that would meet the high expectations of its operators.

HiAce will move you and your load with your choice of two reliable and tireless engines. Both perform with impressive efficiency, which is vital in today's competitive business world where reduced running costs add up to greater profitability. You have the choice of a twin cam Variable Valve Timing with intelligence (VVT-i) equipped 2.7 litre petrol engine or a hard-working 3.0 litre turbocharged intercooled common rail diesel.

With typical Toyota Quality, Durability and Reliability (QDR), this is the vehicle that is sure to get the job done. And wearing the HiAce badge, it projects a look of professionalism to your customers that will take your business to another level.



Commuter Bus model shown.

Three set-ups to suit your business.

Long Wheelbase (Van)

With a squared-off body, there's a large 6.0 cubic metres of cargo capacity making the Long Wheelbase a reliable and handy worker. You have seating for three, plus easier access with the larger sliding side door. You can also drive with peace-of-mind with driver and front passenger SRS airbags.

Super Long Wheelbase (Van)

A wide body and high roof helps give the Super Long Wheelbase the biggest capacity of any HiAce in history with a huge 9.8 cubic metres of cargo volume. Remote central locking* and dual sliding side door access means you'll get plenty in, easily and conveniently.

Commuter Bus

Supportive seating provides ride comfort and helps reduce fatigue. A rear cooler ventilation system with overhead air vents provide additional comfort for occupants in the 2nd, 3rd, 4th and 5th row seats, plus three-point seatbelts for all occupants provide increased safety. This 14-seater also includes fold up last row seats for increased storage on those long trips away.

*From September '07 production.

HiAce. Toyota Genuine Accessories.



Accessories make a good thing even better.

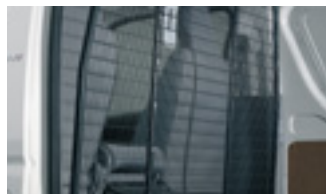
HiAce featured is accessorised with Full Technician Kit Roof Rack, Alloy Nudge Bar, Cargo Barrier, Front Weathershields, Headlamp Covers and All Weather Rubber Floor Mats.



THESE ARE JUST SOME OF THE ACCESSORIES AVAILABLE FOR YOUR HIACE. FOR A COMPLETE LIST AND FURTHER DETAILS, PLEASE SEE YOUR TOYOTA DEALER OR REFER TO ACCESSORIES.TOYOTA.COM.AU



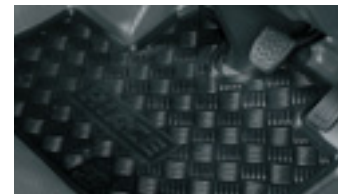
ALLOY NUDGE BAR & HEADLAMP COVERS
(Sold separately)



CARGO BARRIER
Available on LWB & SLWB



FRONT WEATHERSHIELDS



ALL WEATHER RUBBER FLOOR MATS



ROOF RACKS - FULL TECHNICIAN KIT
Available on LWB



ROOF RACKS - STANDARD KIT**
Available on LWB



TOWBAR WITH REAR CORNER PROTECTOR*



TOWBAR WITH REAR STEP AND PROTECTOR*



TOWBAR WITH TECHNICIAN STEP*
Available on LWB



PARKASSIST - REVERSE PARKING SENSORS**



AUDIO CABLE AND CAR CHARGER FOR IPOD***
Available for all vehicles with Auxiliary Input



ELECTROCHROMATIC MIRROR & REAR VIEW CAMERA* (SOLD SEPARATELY)

TOYOTA GENUINE ACCESSORIES COME WITH OUR TOYOTA WARRANTY[‡]

Some Toyota Genuine Accessories are not applicable to all HiAce models. See your Toyota dealer for advice regarding Toyota Genuine Accessories. Pictured Accessories are all sold separately. For a comprehensive guide on the entire range of Toyota Genuine Accessories, visit our website at accessories.toyota.com.au.

[‡]All Toyota Genuine Accessories purchased and fitted to a Toyota are warranted for the remainder of the New Vehicle Warranty or 12 months, whichever is greater. Toyota Genuine Accessories purchased from an authorised Toyota Dealer over the counter are warranted from the date of purchase for 12 months. Conditions apply. All warranties are additional to the implied warranties under the Trade Practices Act 1974.

*Towbar capacity subject to regulatory requirements, towbar design, vehicle design and towing equipment limitations.

**ParkAssist is designed as a driver assist device only and should not be used as a substitute for skilled driving and safe parking practices. The area into which the vehicle is to be reversed must be visually monitored by the driver while parking.

###Economy Ladder Holder Kit, Eye Bolts and Key Locking Security Cable (pictured) are sold separately as optional extras.

^^Available on selected models where AUX-In option is part of audio unit. Suits iPod® models that have a dock connector. Refer to your Apple iPod® Instruction Manual. iPod® is a registered trademark of Apple Inc. This accessory is not a Toyota Genuine Accessory (supplier branded) and is warranted for 12 months from the date of purchase. This warranty is additional to the implied warranties under the Trade Practices Act 1974.

+The rear view camera does not provide a comprehensive view of the entire rear area of vehicle and should only be used as an aid for viewing when reversing.



LWB model shown.

Comfort and storage.

Hard working days will no longer be hard labour. Air conditioning with a clean air filter^{^^} is fitted as standard, while the ease of power steering and supportive seats help reduce fatigue. The ergonomic three-dial instrumentation cluster has two electric trip meters for mileage checking and power front windows make paying tolls less taxing.

The centre seatback on Van models folds forward, offering a handy table with two cupholders for your lunch, or a foldout tray to hold order books or clipboards. If you get thirsty, retractable dual cupholders in the dash and bottle holders built into the front doors help keep your drinks secure. Additionally, drivers have a rear mounted reversing mirror across all models for added vision when reversing.

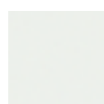
The HiAce's audio system with AM/FM radio and MP3 compatible CD player with Audio Input[^] comes with two door-mounted speakers (four speakers in the bus) and offers easy listening, while full length headlining reduces ambient noise.

The Audio Input[^] allows for easy connection of your iPod[®] or portable MP3 player to provide you with plenty of music choice for those long days on the road.

[^] From January '07 production

^{^^} From September '07 production

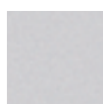
HiAce Exterior Colours.



French Vanilla
(058)



Manilla Yellow
(599)*



Quicksilver
(1E7)*



Cascade Blue
(8P4)*



Green Aspen
(6S3)*

TOYOTA SERVICE ADVANTAGE CUTS NEW CAR RUNNING COSTS

Toyota Service Advantage makes owning your HiAce[#] even more economical because you are entitled to low cost scheduled servicing. That's up to 6 standard services during the first three years or 60,000km, whichever occurs first. Terms and conditions apply. See your Toyota dealer or advantage.toyota.com.au for eligibility, pricing and more information. Toyota Service Advantage pricing represents the maximum amount payable for standard scheduled servicing which is as per 'maintenance for normal operating conditions' outlined in the Warranty & Service Handbook's service schedule. Service Advantage eligibility excludes Government and Rental vehicles and certain other exclusions apply.

[#] Toyota Service Advantage effective from April 2008 compliance plate vehicles and onwards.

Note: Toyota Australia reserves the right to vary and discontinue from time to time the interior and exterior colours, trims and colour/trim/model combinations currently available. Colours and trims displayed here are a guide only and may vary from actual colours due to printing / display process. See your Toyota dealer to confirm colour/trim/model availability when ordering your vehicle.

* Indicates mica, metallic or pearlescent paint which is available at extra cost.

 **ADVANTAGE**

The Trademark of the Professional.

HiAce technical specifications

Mechanical

- 2.7L Twin cam Petrol engine (LPG compatible)*
- 3.0L Turbo Diesel engine
- 5-Speed manual transmission
- 4-Speed (ECT) auto transmission (option)

Engine Specifications

- Petrol (P): 4 cylinder in-line DOHC with Variable Valve Timing with intelligence (VVT-i) on the intake valves.
- Turbo Diesel (T/D): 4 cylinder in-line DOHC with 4 valves per cylinder and intercooler
- Engine capacity (cc) – 2694 (P); 2982 (T/D)
- Maximum Power – 111kW / 4800rpm (P); 80kW / 3000rpm (T/D)
- Maximum Torque – 241Nm / 3800rpm (P); 286Nm / 1200–1600rpm (T/D)
- Bore & stroke (mm) – 95x95 (P); 96x103 (T/D)
- Compression ratio – 9.6:1 (P); 16.0:1 (T/D)
- Fuel system – Electronic Fuel Injection (P); Direct Injection (T/D)
- Fuel type – 91 RON ULP (P); Diesel (T/D)
- Fuel economy:** Manual (L/100km) – 11.6 (LWB P); 12.4 (SLWB, Commuter P); 8.6 (LWB T/D); 9.3 (SLWB, Commuter T/D)
- Fuel economy:** Automatic (L/100km) – 11.6 (LWB P); 12.6 (SLWB, Commuter P); 8.8 (LWB T/D); 9.6 (SLWB, Commuter T/D)
- Ignition system – Electronic Direct Ignition (P); Compression ignition (T/D)

Dimensions

- Overall length (mm) – 4695 (LWB); 5380 (SLWB, Commuter)
- Width (mm) – 1695 (LWB); 1880 (SLWB, Commuter)
- Height (mm) – 1980 (LWB); 2285 (SLWB, Commuter)
- Wheelbase (mm) – 2570 (LWB); 3110 (SLWB, Commuter)
- Track – front/rear (mm) – 1470/1465 (LWB); 1655/1650 (SLWB, Commuter)
- Ground clearance (mm) – 155 – 195
- Cargo volume (m³) – 6.0 (LWB); 9.8 (SLWB)
- Cargo area – floor length (mm) – 2930 (LWB); 3470 (SLWB)
- Maximum cargo width (mm) – 1545 (LWB); 1730 (SLWB)
- Maximum cargo height (mm) – 1335 (LWB); 1635 (SLWB)
- Maximum distance between wheel arches (mm) – 1120 (LWB); 1295 (SLWB)

Vehicle Weights & Capacities

- Kerb weight** – maximum (kg)
 - Manual/auto trans
 - 1715/1715 (LWB P)
 - 1820/1830 (LWB T/D)
 - 1895/1905 (SLWB P)
 - 1985/1995 (SLWB T/D)
 - 2065/2070 (Commuter P)
 - 2160/2170 (Commuter T/D)
 - Payload** (kg):
 - Manual/Auto trans
 - 1085/1085 (LWB P)
 - 980/970 (LWB T/D)
 - 1305/1295 (SLWB P)
 - 1215/1205 (SLWB T/D)
 - 1085/1080 (Commuter P)
 - 1040/1030 (Commuter T/D)
 - Gross Vehicle Mass (kg):
 - 2800 (LWB)
 - 3200 (SLWB)
 - 3150 (Commuter P)
 - 3200 (Commuter T/D)
 - Gross Combined Mass# (kg):
 - 4200 (LWB P)
 - 3800 (LWB T/D)
 - 4600 (SLWB P)
 - 4200 (SLWB T/D)
 - 4550 (Commuter P)
 - 4200 (Commuter T/D)
 - Towing capacity* with trailer brakes (kg) – 1400; without trailer brakes (kg) – 400
 - Seating capacity including driver – 3 (LWB, SLWB); 14 (Commuter)
 - Fuel tank capacity (litres) – 70

Drivetrain

- 5-Speed manual transmission with hydraulic operated clutch
- 4-Speed automatic Electronically Controlled Transmission with fuel saving lock-up torque converter (option)
- Differential ratio manual/auto trans – 4.300:1 / 4.556:1 (P); 3.909:1 / 4.100:1 (T/D)

Steering

- Power assisted rack and pinion
- Turns lock to lock – 4.1
- Turning circle (m) – 10.0 (LWB); 12.4 (SLWB & Commuter)

Brakes

- Vacuum boosted hydraulic system with load sensing proportioning and bypass valve (Note: Proportion valve and bypass valve is fitted with ABS.)

- Front – ventilated disc brakes with single piston callipers
- Rear – self adjusting drum
- Anti-skid Braking System (ABS) with Brake Assist (BA) (option)

Suspension

- Front – Independent double wishbone type with upper torsion bar, hydraulic dampers and stabiliser bar
- Rear – Semi elliptic leaf springs with hydraulic dampers

Wheels

- Tyres and rims – 195R15C 8PR tyres with 6.0Jx15 steel rims

LWB Van model features

Exterior

- Durable front and rear bumpers
- Multi-reflector headlights
- Laminated windscreen
- Tinted side windows
- Steel rims with full wheel caps
- Front and rear mudflaps
- Near side (kerb) rear sliding door
- Lift up tailgate with gas struts
- Tailgate mounted reversing mirror
- Colour/Metallic paint (option)

Interior

- Tone on tone interior trim
- Moulded front door trims
- Vinyl and cloth sun visors
- Durable vinyl floor covering (excludes cargo area)
- Headlining including cargo area
- Front passenger assist grip
- Front seat grab handles
- Tailgate pull-down strap^{††}

Seating

- Cloth fabric seat trim
- Driver's bucket seat
- Front bench passenger seat

Comfort

- Air conditioning
- Clean air filter^{††}
- Rotary type heater controls
- Power steering
- Power mirrors
- Power front windows

Instruments and controls

- Tilt adjustable steering column
- Dashboard mounted gear lever
- Driver's auto up/down window with anti-jam
- Day/Night interior mirror
- Intermittent windscreen wipers
- Intermittent rear wiper with washer
- Rear window demister
- Headlights on, audible warning
- Trip meter, dual setting
- Low fuel warning light
- Fuel system warning lamp (includes water in fuel) (diesel engine only)
- Digital clock in instrument cluster

Lighting

- Door operated dome and cargo lamps
- Illuminated ignition switch

Storage

- Large glovebox
- Centre seat back fold down storage tray
- Cupholders – dashboard mounted
- Drink/bottle holders – in front doors
- Front door pockets
- Centre dashboard storage pocket
- Under dashboard storage
- Driver's side storage pocket
- Coin holder
- Front ashtray and cigarette lighter

Sound System

- AM/FM radio with MP3 compatible single disc CD player and Audio Input[†]
- 2 speakers

Safety

- Driver and front passenger SRS airbags
- Driver's seatbelt warning lamp
- Driver's pre-tensioner and forcelimiter seatbelt
- Front passenger pre-tensioner and forcelimiter seatbelt
- Lap/Sash seatbelts^{##}
- Lap type front seatbelt for centre seat position
- Door and tailgate ajar warning light
- Cargo tie-down hooks
- High mount centre rear stop lamp
- Front door anti-intrusion beams

- Collapsible steering column
- Ventilated front disc brakes
- Anti-skid Braking System (ABS) with Brake Assist (BA) (option)

Security

- Remote central locking including tailgate^{††}
- Fuel cap holder and tether
- Remote fuel lid release
- Engine immobiliser

SLWB Van model features in addition* to LWB

Exterior

- Off side rear sliding door

Seating

- Front passenger's seat recline function (LWB and SLWB only)
- Front passenger's seat slide function^{††}

Storage

- Additional centre dashboard storage bin

Commuter Bus features in addition* to SLWB model

Exterior

- Tinted rear side windows

Interior

- Rear compartment grab handles and rails

Seating

- 14 Seat capacity
- Front passenger bucket seat
- 2nd row – 2 seater bench seat
- 3rd & 4th row – 2 seater bench & 1 bucket seat
- 5th row – 4 seater split-fold bench seat

Comfort

- Air conditioning with rear cooler
- Roof mounted air vents

Lighting

- Rear compartment dome lamps
- Courtesy lamp at rear sliding door

Storage

- Centre console

Sound System

- 4 speakers

Safety

- Two fire extinguishers

Key

- * Towbar capacity subject to regulatory requirements, towbar design, vehicle design and towing equipment limitations. Toyota Genuine Towbar = HiAce towing capacity.

- ^^ Kerb, Tare and Payload weights are nominal and vary depending on options and accessories.

- # Gross Combined Mass (GCM) is the total permissible combined weight of the vehicle and trailer/caravan being towed including occupants, fuel & cargo.

- † Except items that are upgraded.

- + LPG compatible petrol engine excludes LPG system costs and installation charges. Factory developed state-of-the-art sequential vapour injection system with under floor dual LPG tanks and spare wheel relocated to inside rear compartment. Refer to your local Toyota dealer for details.

- ## Not fitted to centre lap seatbelt on Van models.

- ** Fuel consumption will vary depending on driving conditions/style, vehicle condition and options/accessories. Source of fuel consumption data ADR81/01 combined (L/100km).

- ‡ From January 2007 Production.

- †† From September 2007 Production.

IMPORTANT NOTICE – PLEASE READ: Toyota Australia uses its best endeavours to ensure brochure information is correct when published. You must check with your authorised Toyota dealer when ordering to ensure the vehicle with your chosen specifications, equipment and colour is available and that the vehicle can be delivered within a timeframe suitable to you. When ordering accessories, you must check with your authorised Toyota dealer to ensure the accessory's design, features and colours are available and will fit your vehicle. Colours displayed in this brochure are a guide only and may vary from actual colours due to printing/display process. Toyota Australia reserves the right to change without notice, at any time, prices, colours, materials, equipment, specifications and discontinue colours/models. To the full extent allowed by law, Toyota Australia will not be liable for any damage, loss or expense incurred as a result of reliance on this brochure in any way. Distributed nationally by Toyota Motor Corporation Australia Limited. ABN 64 009 686 097. Cnr Gannons Rd & Captain Cook Drive Caringbah, NSW 2229. Part No. HIACE0609. Printed June 2009.