

 **TOYOTA HILUX**  
oh what a *feeling!*

HiLux 4x4.  
Action Utility Vehicle.





4x4 Xtra Cab SR5 model shown.

## Power and presence.

You already know the Toyota Hilux is a versatile ute. We say it's more than that. It's an Action Utility Vehicle (AUV). It's unbreakable workhorse meets off-road action lifestyle! Boasting impressive power across the range, inspiring performance and handling, comfort and fabled Hilux reliability and dependability. It's got the performance you want and the toughness you've come to expect.

## Work safe in Hilux.

Hilux is thankfully big on safety as well. It has been designed for outstanding crash performance to Toyota's tough standards. You'll breathe easier with dual SRS airbags and pretensioning seatbelts as standard and the added safety of front side and full length curtain SRS airbags\* available on the double cab SR5. The added safety of ABS brakes is also available (standard on SR5 models and optional on SR models). The Hilux also has an energy absorbing front body/chassis structure and a strong Safe-T-Cell, to help keep the cabin intact during a collision. It's just another way that Hilux will further strengthen its 'unbreakable' reputation.

THE WORLD'S FIRST  
**AUV**  
ACTION UTILITY VEHICLE

\* Available from August 2009 production.  
Front cover: 4x4 Double Cab SR5 model shown.

TECHNICAL SPECIFICATION HILUX 4x4	SINGLE CAB		XTRA CAB			DOUBLE CAB					
	SR		SR	SR5		SR	SR		SR5		
	Cab Chassis		Cab Chassis	Pickup		Cab Chassis	Pickup		Pickup		
	Petrol	Turbo Diesel	Turbo Diesel	Petrol	Turbo Diesel	Turbo Diesel	Petrol	Turbo Diesel	Petrol	Turbo Diesel	
						MT	AT				
<b>MECHANICAL</b>											
4.0L V6 Twin Cam VVT-i Petrol engine	S	–	–	S	–	–	S	–	S	–	
3.0L EDI Twin Cam Turbo Diesel engine	–	S	S	–	S	S	–	S	–	S	
5-Speed Manual Transmission	S	S	S	S	S	S	S	S	S	S	
4-Speed Auto Transmission	–	0	–	–	–	–	–	0	–	0	
5-Speed Auto Transmission with AI Shift Control	0	–	–	–	–	–	0	–	0	–	
<b>DIMENSIONS (*1)</b>											
Overall Length (mm)	4975		4975	5255		4975	5130		5255		
Overall Width (mm)	1760		1760	1835		1760		1835			
Overall Height (mm)	1795		1795		1810		1810		1810		
Wheelbase (mm)	3085					3085					
Track – Front / Rear (mm)	1510		1510	1540		1510		1540			
Ground Clearance (mm)	298		297		292	297	292	292	292		
Overhang – Front	885					885					
Overhang – Rear	1005		1005	1285		1005	1160		1285		
Angle of approach	30°					30°					
Angle of departure	26°	–	–	23°		–	26°		23°		
Tray Length (mm)	–		–		1805	–		1520			
Tray Width (mm)	–		–		1515	–		1515			
Tray Height (mm)	–		–		450	–		450			
<b>VEHICLE WEIGHTS &amp; CAPACITIES</b>											
Kerb Weight – Manual (kg) (*2)	1650 ~ 1700	1740~ 1820	1795 ~ 1860	1705 ~ 1750	1810 ~ 1865	1825 ~ 1865	1740 ~ 1785	1825 ~ 1875	1735 ~ 1780	1825 ~ 1875	
Kerb Weight – Automatic (kg) (*2)	1680 ~ 1725	1765 ~ 1825	–	–	–	–	1765 ~ 1810	1845 ~ 1900	1775 ~ 1820	1850 ~ 1905	
Gross Vehicle Mass (kg)	2750	2835	2710	2730	2710	2780	2810	2780	2810	2780	
Max. front axle capacity (kg)	1300					1300					
Max. rear axle capacity (kg)	1600					1600					
Gross Combined Mass (kg) (*3)	5000	5085	4960	4980	4960	5030	5060	5030	5060	5030	
Towing capacity – with trailer brakes (kg) (*4)	2250					2250					
Towing capacity – without trailer brakes (kg) (*4)	750					750					
Seating capacity – including driver – Manual trans	3	3	4	4	4	5	5	5	5	5	
Seating capacity – including driver – Auto trans	2	2	–	–	–	–	5	–	5	5	
Fuel tank capacity (litres)	76					76					
<b>STEERING</b>											
Type	Power Assisted Rack and Pinion					Power Assisted Rack and Pinion					
Turning Circle	12.4					12.4					
<b>BRAKES</b>											
System	Vacuum boosted hydraulic system					Vacuum boosted hydraulic system					
Front	Ventilated disc brakes					Ventilated disc brakes					
Rear	Self adjusting drum					Self adjusting drum					
Anti-skid Braking System (ABS)	Option		Standard		Option		Standard		Standard		
<b>SUSPENSION</b>											
Type	Double wishbone type with coil springs, gas filled shock absorbers and stabiliser bar					Double wishbone type with coil springs, gas filled shock absorbers and stabiliser bar					
Front	Leaf spring type rigid axle with gas filled shock absorbers					Leaf spring type rigid axle with gas filled shock absorbers					
Rear	Leaf spring type rigid axle with gas filled shock absorbers					Leaf spring type rigid axle with gas filled shock absorbers					
<b>WHEELS</b>											
Tyres	205R16C		255/70R15C		205R16C		255/70R15C		255/70R15C		
Wheels	6.0Jx16 steel		7.0Jx15 alloy (4)#		6.0Jx16 steel		7.0Jx15 alloy (4)#		7.0Jx15 alloy (4)#		
<b>ENGINE</b>											
	V6 PETROL					TURBO DIESEL					
Name	1GR-FE					1KD-FTV					
Type	V6 DOHC with 4 valves per cylinder with Variable Valve Timing with intelligence (VVT-i)					4 Cylinder in-line DOHC with 4 valves per cylinder, intercooler and electronic direct injection					
Fuel System	Electronic Fuel Injection					Electronic Direct Injection, Common Rail					
Fuel Type	Unleaded Petrol (*11)					Diesel					
Displacement (cc)	3956					2982					
Bore and Stroke (mm)	94.0 x 95.0					96.0 x 103.0					
Compression Ratio	10.0:1					17.9:1					
Max. Power (kW/rpm) (*5)	175/5200					126 / 3600					
Max. Torque (Nm/rpm) (*5)	376 / 3800 (auto) 343 / 2400-4800 (manual)					343 / 1400-3400					
<b>DRIVETRAIN</b>											
	5 Speed Manual			5 Speed Automatic		5 Speed Manual			4 Speed Automatic		
Gear Ratios	1st gear	3.830		3.520		4.313		2.804			
	2nd gear	2.062		2.042		2.330		1.531			
	3rd gear	1.436		1.400		1.436		1.000			
	4th gear	1.000		1.000		1.000		0.705			
	5th gear	0.838		0.716		0.838		–			
	Reverse gear	4.220		3.224		4.220		2.393			
Differential ratio – Front / Rear	3.583 / 3.583					3.727 / 3.727 (*15)					
Transfer Gear Ratio – H4 / L4	1.000 / 2.566					1.000 / 2.566					
<b>FUEL ECONOMY (*6)</b>											
	V6 PETROL			TURBO DIESEL		TURBO DIESEL		TURBO DIESEL		TURBO DIESEL	
	Single Cab	Xtra Cab	Double Cab	Single Cab	Xtra Cab	Double Cab	Single Cab	Xtra Cab	Double Cab	Single Cab	
	Cab Chassis	Pickup	Pickup	Cab Chassis	Cab Chassis	Pickup	Cab Chassis	Cab Chassis	Pickup	Pickup	
ADR 81/02 Combined (L/100km)	Manual	13.3	13.1	13.1	8.2	8.3	8.3	8.3	8.3	8.3	
	Automatic	13.0	–	13.0	9.3	–	–	–	–	9.3	

# Spare steel wheel

**IMPORTANT NOTICE - PLEASE READ**

Toyota Australia uses its best endeavours to ensure brochure information is correct when published. You must check with your authorised Toyota dealer when ordering to ensure the vehicle with your chosen specifications, equipment and colour is available and that the vehicle can be delivered within a timeframe suitable to you. When ordering accessories, you must check with your authorised Toyota dealer to ensure the accessory's design, features and colours are available and will fit your vehicle. Colours displayed in this brochure are a guide only and may vary from actual colours due to printing/display process. Toyota Australia reserves the right to change without notice, at any time, prices, colours, materials, equipment, specifications and discontinue colours/models. To the full extent allowed by law, Toyota Australia will not be liable for any damage, loss or expense incurred as a result of reliance on this brochure in any way. All Toyota Genuine Accessories purchased and fitted to a Toyota are warranted for the remainder of the New Vehicle Warranty or 12 months, whichever is greater. Toyota Genuine Accessories purchased from an authorised Toyota Dealer over the counter are warranted from the date of purchase for 12 months. Conditions apply. All warranties are additional to the implied warranties under the Trade Practices Act 1974. Distributed nationally (other than in Western Australia) by Toyota Motor Corporation Australia Limited. ABN 64 009 686 097. 155 Bertie Street, Port Melbourne, VIC 3207. Material distributed in Western Australia by or on behalf of Prestige Motors Pty Ltd (for vehicles) and by Eastpoint Pty Ltd (for parts/accessories). Toyota Australia makes no warranties regarding (and will not be liable for) the accuracy of materials distributed in Western Australia. PART NO. TYHILUX4WD0210SV. PRINTED FEBRUARY 2010.

FEATURES	SINGLE CAB			XTRA CAB		DOUBLE CAB	
	SR	SR	SR5	SR	SR5	SR	SR5
<b>EXTERIOR</b>							
Body Colour front bumper	S	S	S	S	S	S	S
Chrome step type rear bumper	-	-	S	-	-	S	S
Multi-reflector headlights	S	S	S	S	S	S	S
Front fog lamps	-	-	S	-	-	S	S
Laminated windscreen	S	S	S	S	S	S	S
Tinted side windows	S	S	S	S	S	S	S
16" Steel wheels with centre ornaments	S	S	-	S	-	-	-
15" Alloy wheels (4)	-	-	S	-	-	S	S
Spare steel wheel	S	S	S	S	S	S	S
Deck guard frame with stopper	-	-	-	Pickup	-	-	-
Alloy Sports bar	-	-	S	-	-	S	S
Side Steps	S	S	S	S	S	S	S
Chrome door handles & mirrors	-	-	S	-	-	S	S
Front only mudflaps	S	S	-	C/C	-	-	-
Front & Rear mudflaps	-	-	S	Pickup	S	S	S
Bonnet Scoop (*7)	S	S	S	S	S	S	S
Metallic paint	0	0	0	0	0	0	0
Touch-up paint	S	S	S	S	S	S	S
Rear doors and back window privacy glass (*12)	-	-	-	-	-	S(*12)	S(*12)
<b>INTERIOR</b>							
Cloth facing seat trim	S	S	-	S	-	-	-
Full cloth seat trim	-	-	S	-	-	S	S
Moulded front door trims with cloth inserts	S	S	S	S	S	S	S
Durable vinyl floor covering	S	S	-	S	-	-	-
Floor carpet	-	-	S	-	-	S	S
<b>Seating</b>							
Driver's bucket seat	S	S	S	S	-	-	-
Front bench passenger seat	S(*9)	-	-	-	-	-	-
Front passenger bucket seat	S(*8)	S	S	S	-	-	-
Driver and front passenger sport styled seats (*12)	-	-	-	-	-	S(*12)	S(*12)
2 person capacity rear jump seat	-	S	-	-	-	-	-
3 person capacity rear seat with headrests	-	-	-	S	S	-	-
<b>FEATURES</b>							
Air conditioning - single type	0	0	S	0	S	-	-
Rotary type heater controls	S	S	S	S	S	S	S
Power front windows	S	S	S	-	-	-	-
Power front and rear windows	-	-	-	S	S	-	-
Driver's auto down window	S	S	S	S	S	S	S
<b>Instruments and controls</b>							
Power steering	S	S	S	S	S	S	S
Tilt adjustable steering column	S	S	S	S	S	S	S
Cruise Control (*8)	S	-	S(*13)	S	S(*13)	-	-
Optitron combination meter	-	-	S	-	-	S	S
Multi Information Display including trip computer	-	-	S	-	-	S	S
Audio & Multi-Information Display steering wheel controls	-	-	S(*14)	-	-	S(*14)	S(*14)
Power mirrors	S	S	S	S	S	S	S
Steering wheel mounted audio controls	S(*12)	S(*12)	-	S(*12)	-	-	-
Day/night interior mirror	S	S	S	S	S	S	S
Power accessory socket	-	-	S	-	-	S	S
Variable intermittent windscreen wipers	-	S	S	S	S	-	-
Rear window demister	-	S	S	S	S	-	-
Automatic transmission indicator in dash	-	-	-	-	-	S(*8)	S(*8)
Automatic transmission shift interlock	S(*8)	-	-	S(*8)	S(*8)	S(*8)	S(*8)
Headlights on - audible warning	S	S	S	S	S	S	S
Trip meter	S	S	S	S	S	S	S
Low fuel warning light	S	S	S	S	S	S	S
Digital clock in dashboard	S	S	S	S	S	S	S
<b>Lighting</b>							
Door operated dome lamp	S	S	S	S	S	S	S
Illuminated ignition switch	S	S	S	S	S	S	S
Front personal lamp	-	-	S	-	-	S	S
<b>Storage</b>							
Glovebox	S	S	S	S	S	S	S
Front Cupholders - in dash	S	S	S	S	S	S	S
Front Cupholders - in centre console	S(*8)	S	S	S	S	S	S
Rear Cupholders - in centre console	-	-	-	S	S	-	-
Drink/bottle holders - in front doors	S	S	S	S	S	S	S
Drink/bottle holders - in rear doors	-	-	-	S	S	-	-
Front door pockets	S	S	S	S	S	S	S
Centre dashboard storage	S	S	S	S	S	S	S
Centre console box with lid	S(*8)	S	S	S	S	S	S
Front ashtray and cigarette lighter	S	S	S	S	S	S	S
<b>Audio</b>							
AM/FM radio with MP3 compatible single disc CD player	S	S	-	S	-	-	-
AM/FM radio with MP3 compatible 6 disc in-dash CD changer and colour LCD screen(*12)	-	-	S	-	-	S	S
Audio Input compatible with iPod(*19) or other portable MP3 players as well as USB input(*12)	S	S	S	S	S	S	S
Bluetooth(*16) hands-free telephone capability	S(*12)	S(*12)	S	S(*12)	S	S	S
Number of speakers	2	2	4	2	4	2	4
Manual antenna in A-Pillar	S	S	S	S	S	S	S
Security coded radio	S	S	S	S	S	S	S

FEATURES	SINGLE CAB			XTRA CAB		DOUBLE CAB	
	SR	SR	SR5	SR	SR5	SR	SR5
<b>SAFETY</b>							
Anti-skid Braking System (ABS)	0	0	S	0	S	-	-
Driver and front passenger SRS airbags	S	S	S	S	S	S	S
Front side and full length curtain SRS airbags (*12)	-	-	-	-	-	S(*12)	S(*12)
Driver's seatbelt warning lamp	S	S	S	S	S	S	S
Driver's pre-tensioner seatbelt	S	S	S	S	S	S	S
Front passenger pre-tensioner seatbelt (*10)	S	S	S	S	S	S	S
Front centre seat lap seatbelt	S(*9)	-	-	-	-	-	-
Lap/sash seatbelts for rear outer seating positions	-	S	S	S	S	S	S
Lap type seat belt for rear centre seat position	-	-	-	-	-	S	S
Door ajar warning light	S	S	S	S	S	S	S
High mount centre rear stop lamp	-	-	S	Pickup	S	-	-
Front door anti-intrusion beams	S	S	S	S	S	S	S
Collapsible steering column	S	S	S	S	S	S	S
<b>SECURITY</b>							
Engine immobiliser	S	S	S	S	S	S	S
Power door locks	S	S	S	S	S	S	S
Remote keyless entry	S	S	S	S	S	S	S
Lockable Glovebox	S	S	S	S	S	S	S
Remote fuel door release	Pickup	Pickup	S	Pickup	S	Pickup	S
Fuel cap holder tether	Pickup	Pickup	S	Pickup	S	Pickup	S
Locking fuel cap	C/C	C/C	-	-	-	C/C	-
<b>ACCESSORIES - Dealer fit, available at extra cost*</b>							
Towbar with & without Rear Step 2250 kg (braked) (*4)	D/F	D/F	D/F	D/F	D/F	D/F	D/F
Towbar 1200 kg (braked) (*4)	D/F	D/F	-	D/F	-	-	-
Breaker Steel Bull Bar (pickup only)	-	-	-	-	-	-	-
- Superwinch & Airbag compatible	D/F	D/F	D/F	D/F	D/F	D/F	D/F
Forge Alloy Bull Bar - Airbag compatible	D/F	D/F	D/F	D/F	D/F	D/F	D/F
Alloy Nudge Bar - Airbag compatible	D/F	D/F	D/F	D/F	D/F	D/F	D/F
Superwinch (for fitment to Steel Bull Bar)	D/F	D/F	D/F	D/F	D/F	D/F	D/F
Driving Lights (for fitment to Bull Bars)	D/F	D/F	D/F	D/F	D/F	D/F	D/F
Traybodies - Alloy & Steel, wide range of options	D/F*	D/F*	D/F	D/F	D/F	D/F	D/F
Hard Tonneau Cover - colour matched - Pickup Only	-	-	D/F	-	-	D/F	-
Soft Tonneau Cover - Pickup Only	-	-	D/F	D/F	D/F	D/F	D/F
Roof Racks - 2 bar set	-	-	-	-	-	D/F	D/F
Bonnet Protector, Headlamp Covers & Weathershields	D/F	D/F	D/F	D/F	D/F	D/F	D/F
Fabric Seat Covers	D/F	D/F	D/F	D/F	D/F	D/F	D/F
Canvas Seat Covers	D/F	D/F	-	-	-	-	-
High & Low Roof Canopy - Pickup Only	-	-	-	-	-	D/F	D/F
Ute Liner - Pickup Only	-	-	-	-	-	D/F	D/F
All Weather Rubber Floor Mats	D/F	D/F	D/F	D/F	D/F	D/F	D/F
All Weather Rubber Ute Mat - Pickup Only	-	-	D/F	D/F	D/F	D/F	D/F
Display Audio System - Includes 6 in-Dash MP3/CD Changer & Radio with Advanced Bluetooth™ (*16) featuring Handsfree Communications & Stereo Audio Streaming (*21), USB/Auxiliary Audio Input/iPod(*19) & (optional) Rear View Camera (*20) Compatibility	D/F	D/F	S	D/F	S	D/F	S
Satellite Navigation Audio System (*17) - Includes 4 in-dash MP3/CD Changer & Radio with Bluetooth™ (*16) Handsfree Communications	D/F	D/F	D/F	D/F	D/F	D/F	D/F
FollowMe Sound & Navigation System (*17) - Includes Bluetooth™ (*16) Handsfree Communications, Video, USB, iPod® (*18,*19), MP3 & (optional) Rear View Camera (*20) Compatibility	D/F	D/F	D/F	D/F	D/F	D/F	D/F
Electrochromatic Mirror & Rear View Camera (*20)	-	D/F	D/F	D/F	D/F	D/F	D/F
Tyre Pressure Monitoring System	D/F	D/F	D/F	D/F	D/F	D/F	D/F
<b>Key</b>							
S = Standard, - = Not available, 0 = Option available at extra cost, D/F = Dealer fit option available at extra cost, Pickup = Standard on Pickup models, C/C = Standard on Cab Chassis models.							
Note: Options may only be available in combination with others, please see your dealer for details. Options available at extra cost							
*1 = Some vehicle dimension figures are approximate and may vary due to options and accessory fitment.							
*2 = Kerb weights are nominal and will vary depending on options, accessories and tray/body type.							
*3 = Gross Combined Mass (GCM) is the total permissible combined weight of the vehicle and trailer/caravan being towed including occupants, fuel & cargo.							
*4 = Towing capacity subject to regulatory requirements, towbar design, vehicle design and towing equipment limitations.							
*5 = Power and torque test standards differ. Ensure comparisons use same test standard. V6 engine based on 95+ RON.							
*6 = Fuel consumption will vary depending on driving conditions/style, vehicle conditions and options/accessories. Source of fuel consumption data: ADR81/02 combined (L/100km)							
*7 = Turbo Diesel engine only.							
*8 = Automatic transmission model only.							
*9 = Manual transmission model only.							
*10 = Not fitted to front centre lap seatbelt.							
*11 = RON 91 or higher. For improved vehicle performance, the use of premium unleaded petrol with a RON of 95 or higher is recommended.							
*12 = Available from 2009 production.							
*13 = Cruise control also available on manual SRS D/C models from August 2008 production and XTRA cab models from August 2009 production.							
*14 = Available from August 2008 production.							
*15 = Values for Single Cab SR Cab Chassis Turbo Diesel A/T = 3.727/3.583.							
*16 = The Bluetooth word mark is owned by Bluetooth SIG, Inc. Bluetooth™ will only operate with telephones enabled with compatible Bluetooth™ wireless technology (HFP (Hands Free Profile) v1.0 and OPP (Object Push Profile) v1.1 international standards). OPP functionality only works on satellite navigation equipment.							
*17 = Current navigation mapping database encompasses major capital and primary national road networks as well as offering some coverage in regional areas.							
*18 = Optional FollowMe iPod® kit available.							
*19 = iPod® is a registered trademark of Apple Inc.							
*20 = The rear view camera does not provide a comprehensive view of the entire rear area of vehicle and should only be used as an aid for viewing when reversing.							
*21 = Streaming Bluetooth™ Audio compatibility requires devices that are enabled with compatible technology Bluetooth™ v1.2 and must also be enabled with both A2DP (Advanced Audio Distribution Profile) v1.0 or later and AVRCP (Audio/Video Remote Control Profile) v1.0 or later.							



SR Model shown.

## The HiLux Range.

### SR

This is the worker you can take anywhere. 4WD, so it's right for the farm or city worksites and equipped for both. This HiLux is available in an automatic turbo diesel, so you get low down grunt with sensible running costs. It's also great to live with, thanks to the added creature comforts. So whether you're checking fire trails or searching for the best wave breaks, SR will take you there and back.

### SR5

This HiLux takes everything to the max. With its proven 4WD capabilities it can negotiate boggy worksites or treacherous off-road tracks with ease. You'll enjoy maximum comfort whether you choose the Double Cab or Xtra Cab to make long journeys easy going. Plus it dresses up for work, with chrome mirrors, body coloured overfender flares, chrome door handles and an alloy sports bar. The double cab also comes with privacy glass\* on the rear doors and back window as well as sport styled front seats\*. HiLux SR5 is the best looking HiLux ever.

\* Available from August 2009 production.

## Colour guide.



Glacier White  
(040)



Sterling Silver<sup>o</sup>  
(1C0)



Ink<sup>o</sup>  
(209)



Velocity Red  
(3E5)



Dusty Grey<sup>o</sup>  
(4P9)



Charcoal Grey<sup>o</sup>  
(1E9)



Green Aspen<sup>o</sup>  
(6S3)



Tidal Blue<sup>o#</sup>  
(8T7)

### TOYOTA SERVICE ADVANTAGE CUTS NEW CAR RUNNING COSTS

Toyota Service Advantage makes owning your HiLux even more economical because you are entitled to low cost scheduled servicing. That's up to 6 standard services during the first three years or 60,000km, whichever occurs first. Terms and conditions apply. See your Toyota dealer or [advantage.toyota.com.au](http://advantage.toyota.com.au) for eligibility, pricing and more information. Toyota Service Advantage pricing represents the maximum amount payable for standard scheduled servicing which is as per 'maintenance for normal operating conditions' outlined in the Warranty & Service Handbook's service schedule. Service Advantage eligibility excludes Government and Rental vehicles and certain other exclusions apply.

Note: Toyota Australia reserves the right to vary and discontinue from time to time the interior and exterior colours, trims and colour/trim/model combinations currently available. Colours and trims displayed here are a guide only and may vary from actual colours due to printing/display process. See your Toyota Dealer to confirm colour/trim/model availability when ordering your vehicle.

<sup>o</sup>Indicates mica, metallic or pearlescent paint which is available at extra cost. <sup>#</sup>Available from August 2008 Production.

 **TOYOTA SERVICE**  
**ADVANTAGE**



Get it on and go your own way.

Double Cab SR Cab Chassis accessorised with Heavy Duty Steel Tray (Colour Coded) with Checker Plate Floor.

THESE ARE JUST SOME OF THE ACCESSORIES AVAILABLE. FOR A COMPLETE LIST AND FURTHER DETAILS, PLEASE SEE YOUR TOYOTA DEALER OR VISIT [ACCESSORIES.TOYOTA.COM.AU](http://ACCESSORIES.TOYOTA.COM.AU)



4x4 BREAKER BULL BAR – STEEL SUPERWINCH COMPATIBLE (SOLD SEPARATELY)



ALLOY NUDGE BAR – AIRBAG COMPATIBLE



HARD TONNEAU COVER RANGE (I DECK SHOWN)  
Double Cab Utility only



TRAY BODY RANGE (ALLOY TRAY BODY WITH OPTIONAL REAR RACK & ALLOY WINDOW PROTECTOR SHOWN)



CANOPY RANGE (HIGH ROOF SHOWN)  
Double Cab only



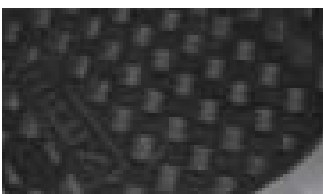
SOFT TONNEAU COVER RANGE (A DECK SHOWN)  
All Utility models



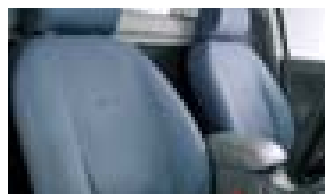
ALL WEATHER RUBBER UTE MAT  
All Utility models



TOWBAR RANGE (TOWBAR WITH REAR STEP (2250kg Braked)\* SHOWN WITH OPTIONAL TOWBALL & TRAILER WIRING HARNESS)



ALL WEATHER RUBBER FLOOR MATS  
FRONT & REAR AVAILABLE (SOLD SEPARATELY)



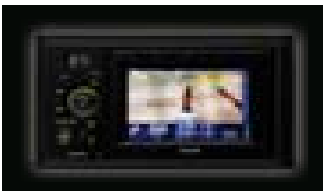
CANVAS SEAT COVERS



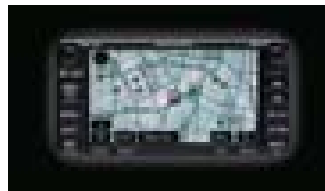
TYRE PRESSURE MONITORING SYSTEM



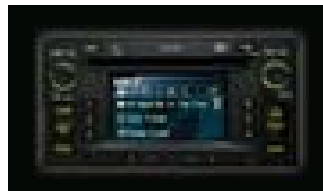
UTE LINER & TAILGATE LINER  
Double Cab Utility only



FOLLOWME SOUND & NAVIGATION SYSTEM\* – INCLUDES BLUETOOTH™<sup>^</sup> HANDSFREE COMMUNICATIONS, VIDEO, USB, IPOD®<sup>‡</sup>, MP3 & (OPTIONAL) REAR VIEW CAMERA\* COMPATIBILITY



SATELLITE NAVIGATION AUDIO SYSTEM\* – INCLUDES 4 IN-DASH MP3/CD CHANGER & RADIO WITH BLUETOOTH™<sup>^</sup> HANDSFREE COMMUNICATIONS & (OPTIONAL) REAR VIEW CAMERA\* COMPATIBILITY



DISPLAY AUDIO SYSTEM – INCLUDES 6 IN-DASH MP3/CD CHANGER & RADIO WITH ADVANCED BLUETOOTH™<sup>^</sup> FEATURING HANDSFREE COMMUNICATIONS & STEREO AUDIO STREAMING; USB/AUXILIARY AUDIO INPUT/IPOD®<sup>‡</sup> & (OPTIONAL) REAR VIEW CAMERA\* COMPATIBILITY  
Audio upgrade for SR models only



ALLOY WHEEL LOCK NUT SET

## TOYOTA GENUINE ACCESSORIES ARE COVERED BY OUR TOYOTA WARRANTY<sup>‡</sup>

Some Toyota Genuine Accessories are not applicable to all HiLux models. See your Toyota dealer for advice regarding Toyota Genuine Accessories. Pictured Accessories are all sold separately. For a comprehensive guide on the entire range of Toyota Genuine Accessories, visit our website at [accessories.toyota.com.au](http://accessories.toyota.com.au).

#Towing capacity subject to regulatory requirements, towbar design, vehicle design and towing equipment limitations. \*The rear view camera does not provide a comprehensive view of the entire rear area of vehicle and should only be used as an aid for viewing when reversing. \*Current navigation mapping database encompasses major capital and primary national road networks, as well as offering some coverage of regional areas. ^The Bluetooth word mark is owned by Bluetooth SIG, Inc. Bluetooth™ will only operate with telephones enabled with compatible Bluetooth™ wireless technology (HFP (Hands Free Profile) v1.0 or later and OPP (Object Push Profile) v1.1 or later international standards). OPP functionality only works on satellite navigation equipment. †Optional FollowMe iPod® kit available. ‡iPod® is a registered trademark of Apple Inc. \*Streaming Bluetooth™ Audio compatibility requires devices that are enabled with compatible technology Bluetooth™ v1.2 and must also be enabled with both A2DP (Advanced Audio Distribution Profile) v1.0 or later and AVRCP (Audio/Video Remote Control Profile) v1.0 or later. †All Toyota Genuine Accessories purchased and fitted to a Toyota are warranted for the remainder of the New Vehicle Warranty or 12 months, whichever is greater. Toyota Genuine Accessories purchased from an authorised Toyota Dealer over the counter are warranted from the date of purchase for 12 months. Conditions apply. All warranties are additional to the implied warranties under the Trade Practices Act 1974.