

## IMPORTANT!

This brochure has been compiled by Daimler AG of Germany or one of its Group Companies to provide a general indication only of the range of vehicles, optional extras (for example satellite navigation systems, interface and telecommunication kits), accessories, merchandise and/or products (together, the range is known as the “Products”) available in various countries. Some of the Products shown may not be available in Australia, or may only be available in a different specification. Additionally, some Products may only be available in combination with others. Colours may differ slightly from those shown in the brochure, owing to the limitations of the printing process. Products available while stocks last. Changes may have been made to the Products since this brochure was printed. The information in this brochure is therefore indicative, illustrative and provided only for guidance and should not be relied upon. For current information on the availability, design, features and prices of Products available in Australia you should contact your local authorised Mercedes-Benz Dealer.



Mercedes-Benz



Genuine accessories  
for the CLS-Class Coupé



Mercedes-Benz



# Contents

004

## EXTERIOR

Light-alloy wheels  
Styling accessories  
Wheel accessories

010

## TELEMATICS

InCar Hotspot  
Multimedia  
Navigation  
Telephony

018

## INTERIOR

Child safety  
Interior appointments

024

## CARGO & CARE

Boot accessories  
Carrier systems

032

Quality & Safety

034

## COLLECTION

Lifestyle

038

## AMG

Bodystyling  
Interior  
Light-alloy wheels

042

Index







01



# Exterior

Light-alloy wheels  
Styling accessories  
Wheel accessories

01 **incenio** 48.3 cm (19-inch)  
10-spoke wheel

# Captivating CLS

Thrilling exterior design. Sweeping contours. The CLS is a car that captivates the senses.

Take those captivating looks and add a touch of individual elegance – with Mercedes-Benz light-alloy wheels, designed to reflect your own personal interpretation of the CLS.

At first glance. And second. And...

## 01 **incenio** 10-spoke wheel

Finish: two-tone

Wheel: 8.5J x 19 ET 34.5

Tyre: 255/35 R19

A218 401 0802 7X23

Option for rear axle:

Wheel: 9.5J x 19 ET 48

Tyre: 285/30 R19

A218 401 0902 7X23

## 02 **incenio** 10-spoke wheel

Finish: titanium silver, high-sheen

Wheel: 8.5J x 19 ET 34.5

Tyre: 255/35 R19

A218 401 0802 7X07

Option for rear axle:

Wheel: 9.5J x 19 ET 48

Tyre: 285/30 R19

A218 401 0902 7X07

## 03 **incenio** 5-twin-spoke wheel

Finish: titanium silver

Wheel: 8.5J x 18 ET 34.5

Tyre: 255/40 R18 XL

A218 401 1202 9765

Option for rear axle:

Wheel: 9.5J x 18 ET 48

Tyre: 285/35 R18

A218 401 1302 9765

## 04 **incenio** 10-spoke wheel

Finish: titanium silver

Wheel: 8.5J x 17 ET 34.5

Tyre: 245/45 R17 XL

A218 401 1002 9765





# Exterior

Light-alloy wheels



## 03 5-spoke wheel

Finish: titanium silver

Wheel: 8.5J x 19 ET 34.5

Tyre: 255/35 R19 XL

A218 401 0402 9765

Option for rear axle:

Wheel: 9.5J x 19 ET 48

Tyre: 285/30 R19 XL

A218 401 0502 9765

## 04 Multi-spoke wheel

Finish: titanium silver

Wheel: 8.5J x 18 ET 34.5

Tyre: 255/40 R18 XL

A218 401 0202 9765

Option for rear axle:

Wheel: 9.5J x 18 ET 48

Tyre: 285/35 R18

A218 401 0302 9765

## 05 5-spoke wheel

Finish: titanium silver

or mid himalayas grey

Wheel: 8.5J x 18 ET 34.5

Tyre: 255/40 R18 XL

A218 401 0102 9765 (titanium silver);

A218 401 0102 7756 (mid himalayas grey)

Option for rear axle:

Wheel: 9.5J x 18 ET 48

Tyre: 285/35 R18

A218 401 0702 9765 (titanium silver);

A218 401 0702 7756 (mid himalayas grey)

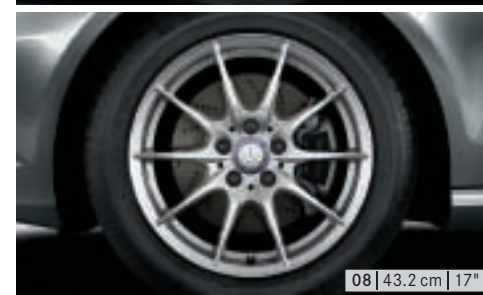
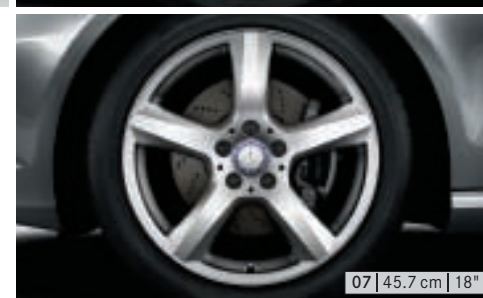
## 06 10-spoke wheel

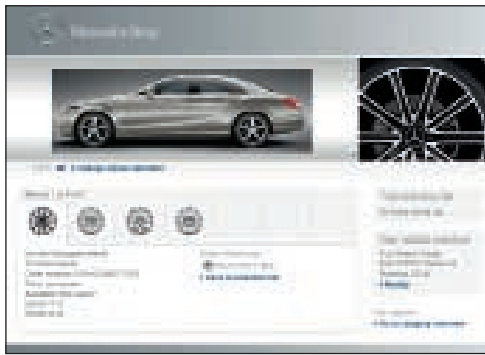
Finish: titanium silver

Wheel: 8.5J x 17 ET 34.5

Tyre: 245/45 R17

A218 401 0002 9765





### Choose your favourite wheels online

Our Accessories Configurator shows you how the various **incenio** light-alloy wheels will look on your vehicle. Visit our website at [www.mercedes-benz-accessories.com](http://www.mercedes-benz-accessories.com)

### A word of advice

*Because of differences in national regulations, various different versions of each vehicle exist. Please also bear in mind that vehicle development is permanently ongoing. As a result, not all of the wheel/tyre combinations shown in this brochure will be approved for your particular Mercedes-Benz.*

*Your Mercedes-Benz partner, however, has access to constantly updated information on every Mercedes-Benz wheel, including the relevant technical inspection findings and licensing conditions, and will be happy to advise you*

### 01 Snow chain systems

The RUD-matic DISC snow chain has a user-friendly design and can be fitted and removed quickly. With extra-reinforced chain links for the toughest conditions and excellent traction on snow and ice, it is a reliable companion on wintry roads

### 02-06 Hub caps

Protect the hub from dirt – in style. Available in the following versions:

- 02 classic Roadster design, blue
- 03 classic Roadster design, black
- 04 titanium silver with chrome star
- 05 sterling silver with chrome star
- 06 black with chrome star

### 07 Rim locks

Set consisting of coded key and one lock per wheel  
**Wheel bolts** | not pictured

### 08 Valve caps

### 09 Tyre pressure gauge

Compact design. Saves readings. Suitable for all tyre valves (including cycle tyres). Keeping tyres at the optimum pressure saves fuel and reduces tyre wear. Supplied with leather pouch

### 10 Rear spoiler

Discreet spoiler, fitted to the boot lid, subtly accentuating the rear contours of the CLS



01



02



03



04



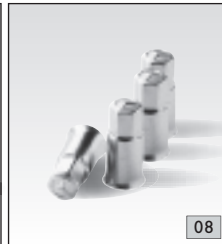
05



06



07



08



09

# Exterior

Snow chains

Styling accessories

Wheel accessories





# Telematics

InCar Hotspot  
Multimedia  
Navigation  
Telephony



01 Rear Seat Entertainment System

# Quick-change artist

Engrossed silence in the rear. A sense of calm relaxation in the front: the new Rear Seat Entertainment System makes long car journeys a joy, especially for those sitting in the back.

There are plenty of different telematics options to choose from in the CLS. The Mercedes-Benz InCar Hotspot, for example, turns your dream car into a work place with straightforward, fast wireless internet access.

Telephone exchange, traffic control centre, concert hall. What do you want your CLS to be?



01



*A range of multimedia connections, 2 sets of infrared headphones and a remote control - the Rear Seat Entertainment System offers everything you need for in-car entertainment*

## 01 Rear Seat Entertainment System

This high-performance DVD system allows the rear passengers to watch DVDs, look at their favourite pictures and even play video games on two superb 17.8 cm colour screens, without disturbing the driver or restricting the rear field of vision. The system's separate DVD players mean that rear-seat passengers have the option of watching a different video source on each screen, allowing each to select their own individual entertainment. The USB and SD card interfaces allow other storage media to be used too. The system is designed to be retrofitted in your CLS - no factory-fitted pre-installation required



## 02 Mercedes-Benz Bluetooth® (SAP) telephone module

The telephone module is designed to extend the mobile communication system in your Mercedes-Benz. Just connect it to your Convenience Telephony system (Code 386) in the centre armrest, and start using your mobile via the on-board hands-free system.

Two versions of the Mercedes-Benz Bluetooth SAP<sup>1</sup> telephone module are available: one in the form of a closed box [picture 02] and the other with a corded handset<sup>2</sup> [not pictured]. Both versions feature a SIM card reader. Other advantages of the telephone module:

- Access to contact details saved on your SIM card
- Optimum reception quality as a result of using vehicle's external aerial
- Read and receive text messages
- Charge mobile phone via USB interface (closed box only)

- 1) SAP (SIM Access Profile) allows the module to read your mobile phone's SIM card  
2) Only in conjunction with telephone console (A212 820 0614)



## 03 Mobile-phone holders

When it comes to selecting a mobile for your Mercedes-Benz, you've never had so much choice. One "click" is all it takes to replace the system's "intelligent" mobile-phone holder. It takes a matter of seconds and is as straightforward as inserting the mobile into the holder itself.

Changing your mobile and even alternating between different models of mobile no longer presents a problem. There are no compromises when it comes to convenience-enhancing telephone technology either.

Further advantages of a mobile-phone holder:

- Optimum reception quality as a result of using vehicle's external aerial
- Mobile's battery is charged
- Access to internal phone memory
- Convenient operation using multifunction steering wheel

To use a mobile-phone holder, your car must be factory-fitted with optional extra Code 386, Convenience Telephony. Holders are available for many current Nokia, BlackBerry, Apple and Sony Ericsson mobile phones

For further information about using the phone while in your car, go to [www.mercedes-benz.com/connect](http://www.mercedes-benz.com/connect) or see our Mercedes-Benz telematics brochures. Ask your Mercedes-Benz partner for a copy

## 04 Telephone console

Centre console add-on, designed to allow convenient use of mobile-phone holders or the Bluetooth (SAP) telephone module through horizontal installation of Convenience Telephony (Code 386). Simple to retrofit. Particularly practical: mobile phone and telephone module are protected from items stowed in the centre console



## 01 Mercedes-Benz InCar Hotspot

Introduces the internet to your CLS. All you need is a WLAN-enabled device (laptop, mobile phone, MP3 player). The system provides a quick, stable connection to data networks such as HSDPA/UMTS or GSM/GPRS/EDGE via your car's roof aerial. Up to four devices can be connected at the same time

System requirements: Convenience Telephony (Code 386), Audio 50 APS (Code 525 or 511) or COMAND APS (Code 527 or 512); WLAN-enabled end device with WLAN IEEE 802.11 b/g interface





## 02 Mercedes-Benz iPod® Interface Kit

It's easy to control your iPod or iPhone via the multifunction steering wheel: scroll through the menus [A], adjust the playback and volume [B] and display the title of your choice in the instrument cluster [C]. The location of the iPod connection is designed to hide the device from prying eyes. While connected the iPod is also charged

The iPod Interface Kit is compatible with the following models: iPod from 4th generation | iPod video | iPod photo | iPod U2 | iPod mini | iPod nano up to 6th generation | iPod classic | iPod touch 1st and 2nd generations | iPhone 1st generation, 3G, 3GS and 4. No factory-fitted optional extra required. Does not support your iPhone's phone function. Please contact your Mercedes-Benz partner for details of other function restrictions

### Mercedes-Benz iPod® Interface Kit, Video

As with the iPod Interface Kit, controlling your iPod or iPhone is straightforward. The video appears in the COMAND APS display (when vehicle is stationary only)

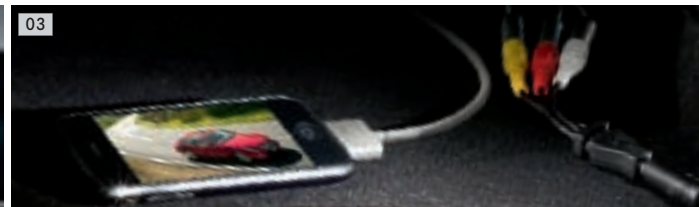
Only in conjunction with COMAND APS (Code 527 or Code 512).  
The Mercedes-Benz Interface Kit allows you to listen to the music or watch the videos saved on your iPhone. It does not support the phone function



## 03 Media Interface video cable

Transforms your Mercedes-Benz into a cinema:  
the Media Interface video cable allows you to watch videos on the monitor of your COMAND APS – while the vehicle is stationary. Various video sources (e.g. camcorder, iPod video, iPhone, video player, etc.) can also be connected to the Media Interface via the AUX connection

Only in conjunction with Media Interface (Code 518). Does not support your iPhone's phone function. Please contact your Mercedes-Benz partner for details of other function restrictions





## Rediscover navigation

*In recent years integral navigation has made journeys more relaxed, less time-consuming and, above all, safer. If you want to continue to enjoy these advantages to the full, we recommend that you regularly replace the navigation DVD in your navigation system with the latest version. Ensuring that the data you're using matches the roads you're travelling on. And that the only surprises you encounter during your journey are of a pleasant nature.*

*The data for the Mercedes-Benz navigation systems is regularly updated. Please ask your Mercedes-Benz partner for the latest navigation DVDs*



## 01 COMAND APS with 6-DVD changer

The new COMAND APS now offers even more convenience and freedom when you're on the move. Your route is navigated with impressive speed, thanks to the integral hard drive. Up to 4 GB of memory offers plenty of space for your favourite music. COMAND APS also plays back music from DVDs and CDs, and from SD memory cards. And the optional Media Interface also allows you to connect your portable music player. For convenience and enhanced safety, all of these functions can be controlled via your COMAND system.

Other features: Bluetooth connectivity, 17.8 cm colour display, dynamic route guidance (RDS/TMC), double-tuner radio with 4-channel amplifier for outstanding sound, DVD changer controls. Also available without DVD changer as an option

## 02 SD memory card

The COMAND APS in your CLS features a slot for SD memory cards. Use the SD memory card as a convenient way to play music

## 03 Europe navigation DVD for COMAND APS

Europe navigation DVD for Audio 50 APS

## 04 Audio 50 APS with 6-DVD changer

Navigation system and car hi-fi combined in one unit which can be operated via the multifunction steering wheel. Dynamic route guidance via RDS/TMC. 2D map navigation on 14.7 cm colour display. Bluetooth connectivity for automatic transfer of contacts, with hands-free function as standard. Double-tuner radio with 4-channel amplifier for outstanding sound. DVD changer controls. Also available without DVD changer as an option

Audio 20 CD with 6-CD changer | not pictured

Double-tuner radio with 14.7 cm colour display. Bluetooth interface with hands-free function. CD changer is MP3-compatible

# Telematics

Audio 20 CD  
Audio 50 APS  
COMAND APS  
Memory cards  
Navigation



## 05 Navigation 20

Navigation 20 transforms your Audio 20 CD radio into a powerful, easy-to-use navigation system: fully integrated into your CLS's control system and with cutting-edge graphic depictions such as Reality View Pro, which generates realistic simulations of road signs on motorways. Other features: Lane Assistant Pro, destination input via map and traffic information for Europe, including Country Info, your source of information regarding statutory regulations abroad.

With Navigation 20 you can also control a music player of your choice via your Audio 20 CD. The location of the iPod and USB connections is designed to hide your audio device from prying eyes. Ask your Mercedes-Benz partner for details of which music players are compatible with Navigation 20

Mercedes-

01

# Interior

Child safety  
Interior appointments



01 Illuminated door sill panels

02 CLASSIC rep floor mats

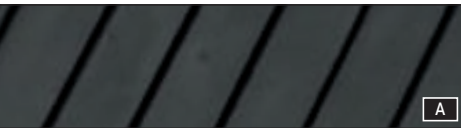
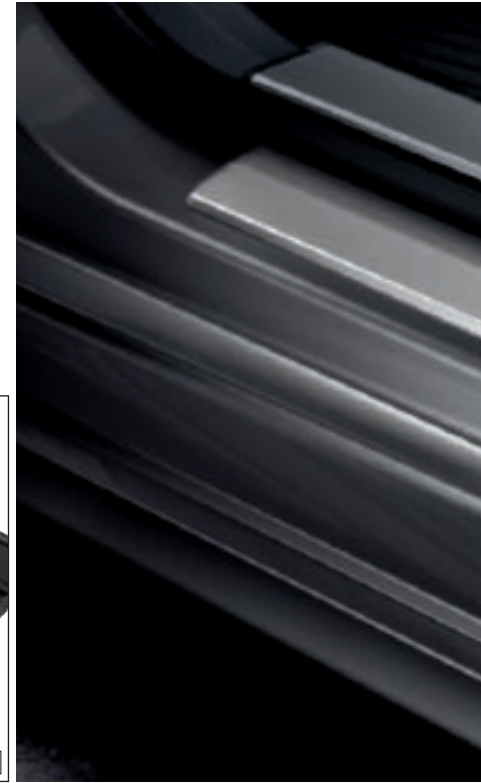
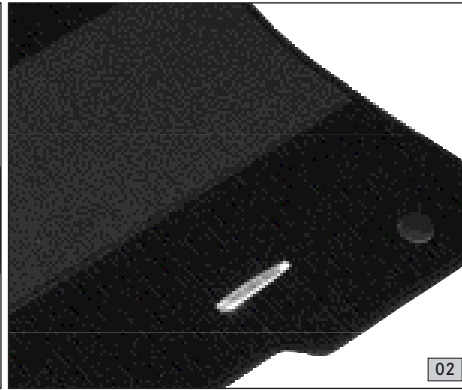
# A measure of quality

Exclusive elegance and tangible quality. What is it that gives high-quality items their irresistible appeal?

A skilfully crafted wood/leather steering wheel or illuminated stainless steel door sill

panel subtly yet instantly draws your attention.

And even Mercedes-Benz floor mats offer an exclusive look, befitting your CLS.



- 01 CLASSIC velour floor mats
- 02 CLASSIC rep floor mats
- 03 CLASSIC all-season floor mats

Durable, hardwearing materials. Available in black [A], alpaca grey [B] and almond beige [C] to match the interior. Can be clip-fastened to the floor of the vehicle to prevent slipping

- 04 Illuminated door sill panels

The white illuminated Mercedes-Benz lettering is activated every time you open the door to get in or out. These illuminated door sill panels, in ground stainless steel, are a further “highlight” of the CLS

- 05 Stainless steel pedal covers

Pedal covers in ground stainless steel with non-slip stud panel

# Interior

Interior appointments



## 06 Wood/leather steering wheel

burr walnut/black

The wood/leather steering wheels are also available in other colours to match the interior

Please contact your Mercedes-Benz dealer for details of compatibility with your car

## Cup holder for the centre console | not pictured

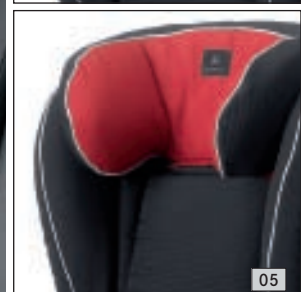
Black. Insert for the centre console. Holds up to two drink containers within easy reach. The insert simply slots into the standard stowage compartment in the centre console



03



04



05



06





## Mercedes-Benz child safety

All Mercedes-Benz child seats are available in the limited-edition “Limited Black” design. The covers are washable and very hardwearing. Replacement covers for the head sections of all seats are available in flannel grey and chilli red [pictures 04 and 05] as an option as well as a complete replacement cover in the popular “DaimlerSquare” design [picture 06].

Mercedes-Benz child seats are available with automatic child seat recognition as an option. If your car also has automatic child seat recognition, the front passenger airbag is automatically deactivated when a child seat with automatic child seat recognition is installed on the front passenger seat. All child seats are also suitable for use in vehicles without ISOFIX attachment points

### 01 “BABY-SAFE plus II” child seat

The patented D-SIP system offers optimum side-impact protection for babies from birth. The integral recline system allows a flatter reclining position for your newborn. Headrest and harness height can be adjusted to suit your child. For babies up to around 15 months (up to 13 kg)

### 02 “DUO plus” child seat

Optimum safety for children between the ages of around 8 months and 4 years (9 to 18 kg). Fitted as standard with top tether, an additional belt for securing the head section, a height-adjustable shoulder belt and ventilation channels. With automatic child seat recognition and ISOFIX attachment points. Adjustable tilt

### 03 “KidFix” child seat

Booster seat for optimum side-impact protection, with height-adjustable backrest. The “KidFix” seat is secured using the 3-point seat belt and ISOFIX attachment points. Available with automatic child seat recognition as an option. For children between the ages of around 3.5 and 12 (15 to 36 kg)

### 04–06 Child seat covers

Replacement covers are available for all child seat models – either in the form of a cover for the head section in flannel grey [picture 04] or chilli red [05] or as a complete replacement cover in the popular “DaimlerSquare” design [06]

### 07 Vario bag

Plenty of extra stowage space for the really important things in life. Available in “DaimlerSquare” design

### 08 Coat hanger

Robust coat hanger made from chromed metal. Easy to fit to the front head restraints. The ideal way to transport items of clothing without creasing them

### 09 Back cushion

Ergonomic, individually adjustable cushion, designed to support the back on long journeys. Available in anthracite



01



# Cargo & Care

Boot accessories  
Carrier systems



02

- 01 New Alustyle ski and snowboard rack "Comfort"
- 02 Alustyle basic carrier bars

# CLS extended

The first 4-door Coupé. The CLS set new standards from the outset, launching a new vehicle segment which combines breathtaking elegance with impressive practicality.

In this section you will find a variety of mature products which combine the highest degree of functionality with unmistakable design.

For example elegant, aerodynamic roof boxes which conveniently open on both sides.



01 03



02

## 01 Alustyle basic carrier bars

The Alustyle system opens up a wealth of flexible options when it comes to transporting sports equipment and luggage. Simply combine the Alustyle basic carrier bars with a variety of different roof-mounted carriers which you can see here and on the following pages. The basic carrier bars are precisely tailored to the body of your CLS, ensuring the highest degree of safety and optimum aerodynamics

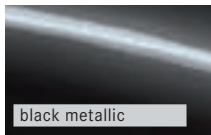
## 02 Transport and stowage bag

Robust bag, made from a high-quality nylon fabric. Protects the basic carrier bars and makes it easier to transport them





03 04



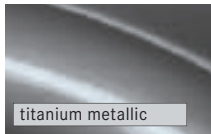
black metallic



silver metallic



05



titanium metallic



matt silver



06

*Boxes open on both sides for convenient loading and unloading*

## Mercedes-Benz roof boxes

Elegant, aerodynamic design, made for your Mercedes-Benz. High-quality, extremely durable material. 450 and 330 models open on both sides for convenient loading and unloading

### 03 Mercedes-Benz roof box 450

Family box. Capacity approx. 450 litres. Available in black metallic and silver metallic. Optional accessories: luggage set and ski rack insert

### 04 Mercedes-Benz roof box 330

Sports box. Capacity approx. 330 litres. Available in titanium metallic and matt silver. Optional accessories: luggage set and ski rack insert

### 05 Luggage set for Mercedes-Benz roof box models 450 and XL

Four bags, designed to make perfect use of the space available in the roof boxes. Made from hardwearing, water-repellent polyester. Plus two matching ski bags, each designed to hold max. two pairs of skis. Ski bag also available separately

### Luggage set for Mercedes-Benz roof box models 330 and L

Four bags made from hardwearing, water-repellent polyester | not pictured

### 06 Ski rack insert for Mercedes-Benz roof box models 450 and XL

A secure hold for up to five pairs of skis\*

### Ski rack insert for Mercedes-Benz roof box 330 and L

A secure hold for up to three pairs of skis\* | not pictured

### Ski bag for interior

For up to four pairs of skis.\* With carrying strap and straps for attaching to load-securing rings in boot | not pictured

\*Subject to geometry of skis





## 01 New Alustyle ski and snowboard rack "Comfort"

For up to 6 pairs of skis or 4 snowboards.  
Lockable. Practical pull-out function makes loading and unloading easier

## 02 New Alustyle ski and snowboard rack "Standard"

For up to 4 pairs of skis or 2 snowboards.  
Lockable

## 03 New Alustyle bicycle rack

Depending on the permissible roof load, up to 4 bicycle racks can be fitted per pair of basic carrier bars. Each bicycle rack can hold one bicycle with a max. frame diameter of 98 mm (circular frame tubes) or 110 x 70 mm (oval frame tubes).

The support frame folds down when not in use, reducing drag when travelling without cycles. Cycles can either be attached to the rack once it has been fitted to the roof or before it is fitted

## 04 Coil lock

Designed to help prevent theft. Available as an option for the bicycle rack



#### 01 Concertina load sill protector

Protects bumper and load sill from scratches

#### 02 Shallow boot tub

Simple to clean. Non-slip thanks to PP-Flex. Suitable for transporting foodstuffs

#### 03 Luggage nets

Available for the load sill and the floor of the boot. Prevent lightweight objects from sliding around during your journey. The net for the load sill is in pocket format

#### 04 Reversible mat

The reversible mat has a high-quality velour side and a non-slip side. It helps keep the original floor of the boot clean. Available in black

#### 05 EASY-PACK boot box

A practical option for storing objects in the boot. The rail system means that when it is not in use, it can be slid beneath the parcel shelf to save space

#### 06 Luggage-securing feature

Ingenious solution to the problem of luggage sliding around in the boot. Attaches securely around the object in question thanks to Velcro fastening

#### 07 Tie-down strap

Even heavy objects can be secured in place easily using this strap

#### 08 Shopping crate

Anthracite. Collapsible

#### 09 Coolbox

Black/grey. Hard case with fabric cover featuring pockets for extra items. Cold/hot switch. Capacity: 24 litres. 12 V connection. Adjustable carrying strap

#### 10 Coolbag

Black. Fabric outside, plastic liner inside. Outside pockets offer plenty of room for extra items. Capacity: 12 litres. 12 V connection. Adjustable carrying strap

#### 11 Rectifier

Allows the coolbox and the coolbag to be connected to a 230 V socket at home

#### 12 Charger with trickle charge function

With its cutting-edge technology, the Mercedes-Benz charger ensures the longest possible battery life. Available in a 3.6 amp version and a 25 amp version

#### 13 Fluorescent jacket

Already compulsory in many countries, the bright orange and yellow fluorescent jackets with reflex stripes are conspicuous even in the dark. Available individually or as a pack of two

#### 14 Dust cover

Protective cover made from synthetic stretch fabric. Designed to be used in garage or other enclosed spaces. Keeps the car clean and protects it from dust and scratches





# Cargo & Care

Boot accessories



14



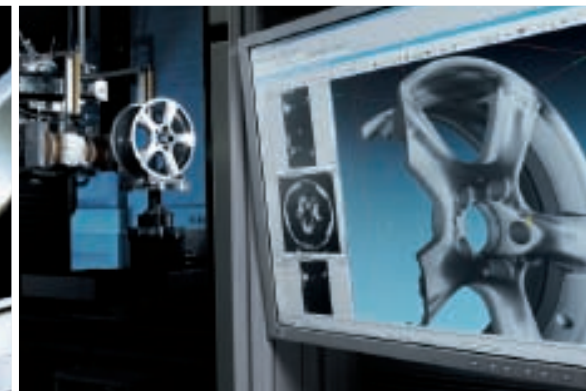
09 10 11



12



13



## I. Design & Development

Mercedes-Benz genuine accessories make your dream car a reality - while ensuring that it remains a Mercedes-Benz through and through:

- ▶ Individualisation options are developed in accordance with the Mercedes-Benz car design philosophy.
- ▶ The use of CAD data from Mercedes-Benz Vehicle Development ensures precision-fit accessories.

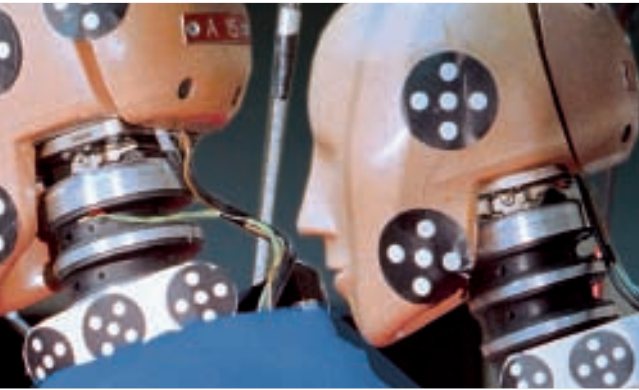
## II. Quality & Safety

When it comes to Mercedes-Benz vehicles, quality and safety are paramount. You can feel equally safe with Mercedes-Benz genuine accessories as a result of:

- ▶ Stringent safety measures and extensive load testing, including the use of crash test facilities and the wind tunnel.
- ▶ Harmonised development of both vehicle and Mercedes-Benz genuine accessories.
- ▶ The highest of standards, far in excess of those prescribed by law.

## Mercedes through and through

When you drive a Mercedes-Benz, you do so for the best of reasons. Why should your choice of accessories be governed by different standards? Pioneering when it comes to design and technology, Mercedes-Benz genuine accessories deliver on the promises of a major brand.



### III. Function & Operation

Mercedes-Benz genuine accessories form part of the vehicle concept from the outset.

This results in impressive functional solutions:

- ▶ Fully integrated telematics products can be operated safely and conveniently using the multifunction steering wheel.
- ▶ Roof-mounted carrier systems can be fitted quickly and without the use of additional tools.
- ▶ Instructions and manuals are in standard format and easy to understand.

### IV. Advice & Fitting

No one is as familiar with the ins and outs of your vehicle as our employees. And the same goes for Mercedes-Benz genuine accessories:

- ▶ Contact your Mercedes-Benz Service and Sales partners for expert advice.
- ▶ Trust our trained specialists when it comes to fitting Mercedes-Benz genuine accessories.



# Collection

Lifestyle



01 CLS key ring

# Unmistakably CLS

A CLS is never a random choice. When it comes to vehicle design, the statement this Mercedes-Benz makes could hardly be more clear-cut or decisive.

The Mercedes-Benz Collection offers you decisive, clear-cut design in a variety of options to reflect your unmistakable chosen vehicle.



01



02



04



03

## 01 CLS key ring

Key ring with split ring, centre section and articulated link in brass. The key fob is a replica of the CLS symbol which features on the boot lid

## 02 Kiev key ring

Silver-coloured. Mercedes-Benz star logo, trimmed with CRYSTALLIZED™-Swarovski Elements. Mercedes-Benz engraved on split ring. Length approx. 9 cm

## 03 Umbrella

Anthracite metallic outside, cool grey inside. Fibre glass ribs. Wooden handle with chromed caps. Automatic opening. 3D star logo on handle. Length approx. 95 cm. Diameter approx. 120 cm

## 04 Scarf

Maritime design combined with motifs such as chains and anchors. 100 % silk. Size approx. 52 x 52 cm



# Collection

Lifestyle



05

## 05 Men's Business watch

Metal bracelet strap. Stainless steel case and bracelet. Hardened mineral crystal with anti-reflective coating on one side. Date feature with magnifying window. Screw back featuring Mercedes-Benz logo. 3D star logo on dial. Tested to 10 ATM

## 06 Chrome ballpoint

Gloss finish. Takes standard refills. Logo laser-engraved on clip



06



07

## 07 Business tie

100 % silk. Integral woven dot pattern. Made in Italy. Anthracite/ochre yellow

## 08 Men's belt

Black. 100 % leather. With comfort fastener. Adjustable fit



08





# AMG

Bodystyling

Interior

Light-alloy wheels



02

01 AMG 5-spoke wheel

02 AMG front apron



#### 01 AMG bodystyling

A sporty exterior for your CLS. The AMG bodystyling components - front apron, rear apron and spoiler lip, painted in body colour or in genuine carbon fibre - are designed for optimum dynamism | also pictured on previous page

#### 02 AMG sports steering wheel

3-spoke design with aluminium shift paddles. In black nappa leather  
Available from 2nd quarter of 2011

#### 03 AMG floor mats

With embroidered AMG lettering

#### 04 AMG door sill panels, not illuminated

Available in brushed stainless steel  
Available from 2nd quarter of 2011

#### 05 AMG door sill panels, white illumination

Available in brushed stainless steel  
Available from 2nd quarter of 2011

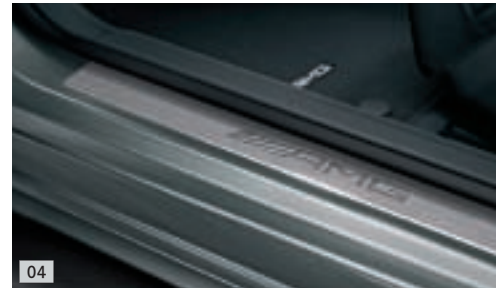


01

02



03



04

## 06 AMG 5-spoke wheel

Finish: silver, high-sheen

Wheel: 8.5J x 19 ET 34.5 | Tyre: 255/35 R19  
B6 603 1486

Option for rear axle:

Wheel: 9.5J x 19 ET 48 | Tyre: 285/30 R19  
B6 603 1487

## 07 AMG 5-spoke wheel

Finish: silver, high-sheen

Wheel: 8.5J x 18 ET 34.5 | Tyre: 255/40 R18  
B6 603 1484

Option for rear axle:

Wheel: 9.5J x 18 ET 48 | Tyre: 285/35 R18  
B6 603 1485

## 08 AMG door pin

In high-quality stainless steel



06 | 48.3 cm | 19"



07 | 45.7 cm | 18"



08



05

# Genuine accessories for the CLS-Class

Light-alloy wheels are supplied without tyres, wheel bolts or hub caps

Further colour variants for individual products can be found in the separate price list for this brochure

Description	p	Item no.
<b>Alustyle basic carrier bars</b>	26	A218 890 0093
<b>Audio 20 CD with 6-CD changer</b>	16	on request
<b>Audio 50 APS with 6-DVD changer</b>	16	on request
<b>Audio 50 APS without DVD changer</b>	16	on request
<b>AMG door pin for front doors</b>	41	A000 766 0228
<b>AMG door sill panels, not illuminated set of 4</b>	40	B6 602 1067
<b>AMG door sill panels, white illumination set of 4, front panels illuminated</b>	40	B6 602 1068
<b>AMG floor mats LHD, complete set, black</b>	40	B6 603 7204
<b>AMG front apron</b>	40	on request
<b>AMG light-alloy wheels</b>	41	see page 41
<b>AMG rear apron</b>	40	on request
<b>AMG sports steering wheel</b>	40	A172 460 4803
<b>AMG spoiler lip painted in body colour</b> Available from 2nd quarter of 2011	40	A218 790 0288
<b>AMG spoiler lip carbon fibre</b> Available from 2nd quarter of 2011	40	A218 790 0388
<b>"BABY-SAFE plus II" child seat</b> Limited Black, with automatic child seat recognition	23	A000 970 2000 9H95
<b>Back cushion</b>	23	A000 970 0690
<b>Ballpoint chrome</b>	37	B6 695 4197
<b>Belt, men</b>	37	B6 695 6486
<b>Bluetooth® telephone module box, SAP</b>	13	A212 906 8600
<b>Boot tub, shallow</b>	30	A218 814 0041
<b>Business tie</b>	37	B6 695 4966
<b>Business watch, men</b>	37	B6 695 5133
<b>Charger (ECE version, 3.6A)</b>	30	A000 982 0121
<b>Charger (ECE version, 25A)</b>	30	B6 754 2027
<b>Child seat covers various colours</b>	23	on request
<b>CLASSIC all-season floor mats LHD, complete set, black</b>	20	A212 6803348 9G33

Description	p	Item no.
<b>CLASSIC rep floor mats LHD, complete set, black</b>	20	A212 680 2448 9G32
<b>CLASSIC velour floor mats LHD, complete set, black</b>	20	A212 680 1848 9F87
<b>CLS key ring</b>	36	B6 695 7513
<b>Coat hanger</b>	23	A000 814 0132
<b>Coil lock 3 mm, set of 2, common key</b>	29	A000 583 1695
<b>COMAND APS with 6-DVD changer</b>	16	on request
<b>COMAND APS without DVD changer</b>	16	on request
<b>Concertina load sill protector</b>	30	A212 680 0246
<b>Coolbag</b>	30	B6 681 8725
<b>Coolbox</b>	30	A000 820 4206
<b>Cup holder for the centre console</b>	21	A204 680 2391
<b>"DUO plus" child seat</b> Limited Black, with automatic child seat recognition	23	A000 970 1100 9H95
<b>Door sill panels, white illumination</b> for front and rear, front panels illuminated	20	on request
<b>Dust cover</b>	30	A218 890 0058
<b>EASY-PACK boot box</b>	30	A212 680 0010 9051
<b>Europe navigation DVD for Audio 50 APS</b>	16	on request
<b>Europe navigation DVD for COMAND APS</b>	16	on request
<b>Fluorescent jacket orange</b>	30	A000 583 0461
<b>Fluorescent jackets pack of 2, orange/yellow</b>	30	A000 583 0361
<b>Hub caps black with chrome star</b>	08	B6 647 0200
<b>Hub caps Roadster design, black</b>	08	B6 647 0201
<b>Hub caps Roadster design, blue</b>	08	B6 647 0120
<b>Hub caps sterling silver with chrome star</b>	08	B6 647 0206
<b>Hub caps titanium silver with chrome star</b>	08	B6 647 0203

Description	p	Item no.
<b>InCar Hotspot</b>	14	on request
<b>iPod® Interface Kit</b>	15	on request
<b>iPod® Interface Kit, Video</b>	15	on request
<b>“KidFix” child seat</b>		
Limited Black, with automatic child seat recognition	23	A000 970 1800 9H95
<b>Kiev key ring</b>	36	B6 695 2811
<b>Light-alloy wheels</b>		
<b>Luggage net, floor of boot</b>	06	from page 06
<b>Luggage net, load sill</b>	30	A212 868 0074
<b>Luggage net, load sill</b>	30	A212 868 0174
<b>Luggage-securing feature</b>	30	A001 987 1414
<b>Luggage set for roof boxes 330 and L</b>	27	A000 890 0411
<b>Luggage set for roof boxes 450 and XL</b>	27	A000 890 0511
<b>Media Interface video cable (ECE)</b>		
<b>Mercedes-Benz roof box 330 (matt silver)</b>	15	A001 827 8004
<b>Mercedes-Benz roof box 330 (titanium metallic)</b>	27	A000 840 3362
<b>Mercedes-Benz roof box 450 (black metallic)</b>	27	A000 840 3462
<b>Mercedes-Benz roof box 450 (black metallic)</b>	27	A000 840 3662
<b>Mercedes-Benz roof box 450 (silver metallic)</b>	27	A000 840 3562
<b>Mobile-phone holders</b>	13	on request
The range is being extended all the time. Please contact your Mercedes-Benz partner for details		
<b>Navigation 20</b>		
<b>New Alustyle bicycle rack</b>	17	on request
<b>New Alustyle ski and snowboard rack “Comfort”</b>	29	A000 890 0293
<b>New Alustyle ski and snowboard rack “Standard”</b>	29	B6 685 1703
<b>New Alustyle ski and snowboard rack “Standard”</b>	29	B6 685 1702
<b>Rear Seat Entertainment System kit</b>		
<b>Rear Seat Entertainment System, infrared headphones</b>	12	on request
<b>Rear Seat Entertainment System, infrared headphones</b>	12	A212 870 4989
<b>Rear Seat Entertainment System, remote control</b>	12	A212 820 3097
<b>Rear spoiler</b>	08	A218 793 0388

Description	p	Item no.
<b>Rectifier</b>	30	A000 982 0021
<b>Reversible mat</b>	30	A212 680 0146
<b>Rim locks</b>	08	B6 647 0155
<b>RUD-matic DISC snow chain system (245/45 R17)</b>	08	B6 755 0000
<b>RUD-matic DISC snow chain system (255/45 R17)</b>	08	B6 758 0881
<b>Scarf</b>		
<b>SD memory card</b>	36	B6 695 5451
<b>Shopping crate</b>	16	B6 782 3973
<b>Shopping crate</b>	30	B6 647 0995
<b>Ski bag for interior</b>	27	A000 890 0711
<b>Ski rack insert for roof boxes 330 and L</b>	27	A000 840 4718
<b>Ski rack insert for roof boxes 450 and XL</b>	27	A000 840 4818
<b>Stainless steel pedal covers</b>	20	A000 290 0501
<b>Telephone console</b>		
<b>Tie-down strap</b>	13	on request
<b>Tie-down strap</b>	30	A000 890 0294
<b>Transport and stowage bag</b>	26	A000 890 0111
<b>Tyre pressure gauge</b>	08	B6 658 8140
<b>Umbrella</b>		
<b>Umbrella</b>	36	B6 695 7544
<b>Valve caps</b>		
<b>Valve caps</b>	08	B6 647 2001
<b>Vario bag “DaimlerSquare” fabric</b>	23	A000 899 1961
<b>Wheel bolts</b>		
<b>Wheel bolts</b>	08	B6 647 0159
<b>Wood/leather steering wheel</b>	21	on request

January 2011

Please note: changes may have been made to the products since this brochure went to press (31.12.2010). The manufacturer reserves the right to make changes to the design, form, colour and specification during the delivery period, provided these changes, while taking into account the interests of the vendor, can be deemed reasonable with respect to the purchaser. Where the vendor or the manufacturer uses symbols or numbers to describe an order or the subject of an order, no rights may be derived solely from these. The illustrations may show accessories and items of optional equipment which are not part of standard specification. Colours may differ slightly from those shown in the brochure, owing to the limitations of the printing process. This brochure has been compiled by Daimler AG of Germany and is distributed internationally. It provides a general indication of the range of models, features, optional extras and/or colours available in various countries. Some of the models, features, optional extras and/or colours may not be available in your country or may only be available in a different specification. Additionally some models, features, optional extras and/or colours may only be available in combination with others. For current and more specific information in relation to the range of models, features, optional extras and/or colours available in your country, and their pricing, you should contact your nearest authorised Mercedes-Benz Passenger Car Dealer.