

IMPORTANT!

This brochure has been compiled by Daimler AG of Germany or one of its Group Companies to provide a general indication only of the range of vehicles, optional extras (for example satellite navigation systems, interface and telecommunication kits), accessories, merchandise and/or products (together, the range is known as the “Products”) available in various countries. Some of the Products shown may not be available in Australia, or may only be available in a different specification. Additionally, some Products may only be available in combination with others. Colours may differ slightly from those shown in the brochure, owing to the limitations of the printing process. Products available while stocks last. Changes may have been made to the Products since this brochure was printed. The information in this brochure is therefore indicative, illustrative and provided only for guidance and should not be relied upon. For current information on the availability, design, features and prices of Products available in Australia you should contact your local authorised Mercedes-Benz Dealer.



Mercedes-Benz

Genuine accessories
for the SLK-Class



Mercedes-Benz

Contents

- 004 **Exterior**
Light-alloy wheels
Wheel accessories
- 010 **MercedesSport**
Genuine individualisation
- 012 **Telematics**
Multimedia
Navigation
Telephony
- 018 **Interior**
Child safety
Interior appointments
- 024 **Cargo & Care**
Boot accessories
- 028 **Quality & Safety**
- 030 **Collection**
Personal accessories
- 034 **AMG**
Bodystyling
Interior
Light-alloy wheels
- 038 **Index**









Exterior

Light-alloy wheels
Wheel accessories

01 **incenio** 43.2 cm (17-inch)
10-spoke wheel

The choice is yours

The light-alloy wheels which feature in the Mercedes-Benz genuine accessories range offer the perfect way to express your individuality.

The spellbinding designs round off the visual performance of one of the most exciting cars of our time. Mercedes-Benz light-alloy wheels, however, don't just offer an impressive look – they are also based on leading-edge technology from our research laboratories.

01 **incenio** 10-spoke wheel

Finish: palladium silver/high-sheen

Wheel: 7.5 J x 17 ET 42 | Tyre: 225/45 R17

A17Z 401 1402 7X19

Option for rear axle:

Wheel: 8.5 J x 17 ET 36 | Tyre: 245/40 R17

A17Z 401 1502 7X19

A word of advice

Because of differences in national regulations, various different versions of each vehicle exist. Please also bear in mind that vehicle development is permanently ongoing. As a result, not all of the wheel/tyre combinations shown in this brochure will be approved for your particular Mercedes-Benz.

Your Mercedes-Benz dealer, however, has access to constantly updated information on every Mercedes-Benz wheel, including the relevant technical inspection findings and licensing conditions, and will be happy to advise you



Exterior

incenio
light-alloy wheels
Wheel accessories



02 Shayni | incenio 7-spoke wheel

Finish: sterling silver

Wheel: 7J x 16 ET 38 | Tyre: 205/55 R16
A212 401 1702 9709

03 incenio 6-spoke wheel

Finish: titanium silver

Wheel: 7J x 16 ET 37.5 | Tyre: 205/55 R16
A172 401 1302 9765

04-08 Hub caps

Protect the hub from dirt - in style.

Available in the following versions:

04 black with chrome star

05 classic Roadster design, blue

06 classic Roadster design, black

07 sterling silver with chrome star

08 titanium silver with chrome star

09 Valve caps



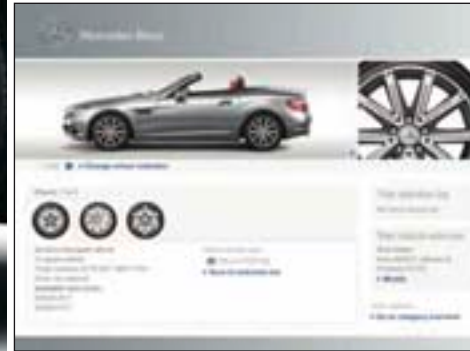
10 Rim locks

Set consisting of coded key and one lock per wheel

Wheel bolts | not pictured

11 Tyre pressure gauge

Compact design. Saves readings. Suitable for all tyre valves (including cycle tyres). Keeping tyres at the optimum pressure saves fuel and reduces tyre wear. Supplied with leather pouch



Choose your favourite wheels online

Our Accessories Configurator shows you at a click of the mouse how the various Mercedes-Benz light-alloy wheels will look on your vehicle. Visit our website at www.mercedes-benz-accessories.com





01 5-spoke wheel

Finish: titanium silver

Wheel: 7.5 J x 18 ET 42 | Tyre: 225/40 R18 XL
A172 401 0602 9765

Option for rear axle:

Wheel: 8.5 J x 18 ET 36 | Tyre: 245/35 R18 XL
A172 401 1002 9765



02 5-spoke wheel

Finish: titanium silver

Wheel: 7.5 J x 17 ET 42 | Tyre: 225/40 R17
A172 401 3602 9765

Option for rear axle:

Wheel: 8.5 J x 17 ET 36 | Tyre: 245/40 R17
A172 401 3702 9765

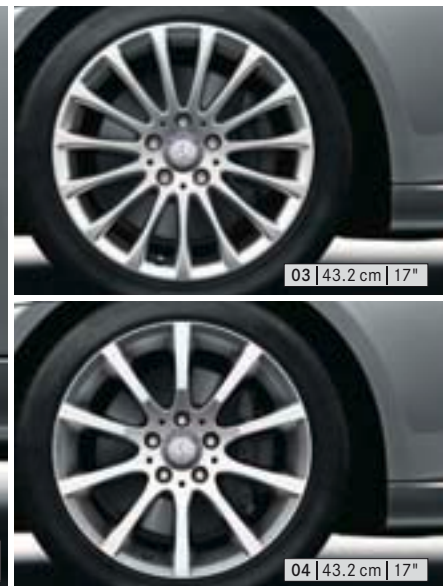
5-spoke wheel

Finish: titanium silver

Wheel: 7 J x 16 ET 37.5 | Tyre: 205/55 R16
A172 401 0102 9765

Option for rear axle:

Wheel: 8 J x 16 ET 33.5 | Tyre: 225/50 R16
A172 401 0202 9765



03 Multi-spoke wheel

Finish: titanium silver

Wheel: 7.5 J x 17 ET 42 | Tyre: 225/45 R17
A172 401 0402 9765

Option for rear axle:

Wheel: 8.5 J x 17 ET 36 | Tyre: 245/40 R17
A172 401 0802 9765

04 10-spoke wheel

Finish: titanium silver

Wheel: 7.5 J x 17 ET 42 | Tyre: 225/45 R17
A172 401 0302 9765

Option for rear axle:

Wheel: 8.5 J x 17 ET 36 | Tyre: 245/40 R17
A172 401 0702 9765

Exterior

Mercedes-Benz
light-alloy wheels
Wheel accessories



05 9-spoke wheel

Finish: titanium silver

Wheel: 7 J x 16 ET 38 | Tyre: 205/55 R16

A212 401 0002 9765

Option for rear axle:

Wheel: 7.5 J x 16 ET 45.5 | Tyre: 255/50 R16

A212 401 0102 9765

06 10-spoke wheel

Finish: titanium silver

Wheel: 7 J x 16 ET 37.5 | Tyre: 205/55 R16

A172 401 0002 9765

07 Snow chain systems

The RUD-matic DISC snow chain has a user-friendly design and can be fitted and removed quickly. With extra-reinforced chain links for the toughest conditions and excellent traction on snow and ice, it is a reliable companion on wintry roads

08 Chrome-look indicator bulbs

Mirrored indicator bulbs round off the chrome finish of your SLK to perfection | standard equipment pictured below left



Style – dynamically interpreted

Every line of the powerful design emphasises the sporty nature of your SLK. MercedesSport, a portfolio of products designed to add an individual touch to your Mercedes-Benz, underlines this athleticism and dynamism in style.

Products include large-format, two-tone MercedesSport 5-twin-spoke wheels, plus chromed fin attachments and a rear spoiler which strikingly round off the design of your vehicle.

01 5-twin-spoke wheel

Finish: two-tone
palladium silver/high-sheen

Wheel: 7.5J x 18 ET 42

Tyre: 225/40 R18

A172 401 1602 7X19

Option for rear axle:

Wheel: 8.5J x 18 ET 36

Tyre: 245/35 R18 XL

A172 401 1702 7X19

02 Fin attachments

High-sheen chromed. For the air intakes
in the bonnet. 6-piece set



03 Rear spoiler

A dynamic highlight for the rear of your Roadster

01

02





Mercedes*Sport*

Genuine individualisation
for the SLK-Class



01



Telematics

Multimedia
Navigation
Telephony

01 Becker® MAP PILOT

It's not where you're heading – it's all about the journey

When developing electronic systems for the Mercedes-Benz genuine accessories range, the focus is on user-friendly design: maximum convenience with the simplest possible controls.

The latest example is the Becker® MAP PILOT, which transforms your Audio 20 radio into a high-performance navigation system, helping you to reach your destination as quickly as possible, feeling relaxed and stress-free.

01 COMAND Online multimedia system with 6-DVD changer

High-performance multimedia system with 6-DVD changer, hard-drive navigation system, telephone keypad and internet browser, shown on high-resolution, 17.8 cm colour display.

- Navigation system with 2D/3D map views, Speed Limit Assist and automatic congestion avoidance (TMC Pro)
- Internet access when vehicle is stationary
- MUSIC REGISTER with 10 GB storage for diverse audio files (MP3, WMA, AAC), USB interface incl. CD cover display and AUX-IN connection (in centre armrest), Bluetooth® interface with hands-free function and audio streaming for music playback, slot for SD memory cards, DVD Video
- LINGUATRONIC voice-operated control system for audio, phone and navigation

02 Europe navigation DVD for COMAND Online

Rediscover navigation. *In recent years integral navigation has made journeys more relaxed, less time-consuming and, above all, safer. If you want to continue to enjoy these advantages to the full, we recommend that you regularly replace the navigation DVD in your navigation system with the latest version. Ensuring that the data you're using matches the roads you're travelling on. And that the only surprises you encounter during your journey are of a pleasant nature. The data for the Mercedes-Benz navigation systems is regularly updated. Please ask your Mercedes-Benz partner for the latest navigation DVDs*





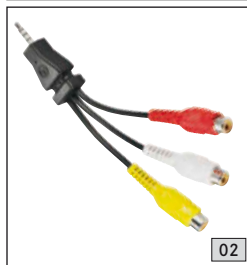
03 Becker® MAP PILOT

Transform your Audio 20 CD radio into a high-performance, easy-to-use navigation system. Becker MAP PILOT uses the standard-fit screen and is conveniently operated via the vehicle controller and the Audio 20 CD keypad. The plug-in navigation module can be connected to your PC via USB to download the latest updates from the Becker website

Available in Europe only



01



02

01 SD memory card

The COMAND Online system in your SLK features a slot for SD memory cards. Use the SD memory card as a convenient way to play music

02 Media Interface video cable

Transforms your Mercedes-Benz into a cinema: the Media Interface video cable allows you to watch videos on the monitor of your COMAND Online – while the vehicle is stationary. Various video sources (e.g. camcorder, iPod video, iPhone, video player, etc.) can also be connected to the Media Interface via the AUX connection

Only in conjunction with Media Interface (Code 518). Does not support your iPhone's phone function. Please contact your Mercedes-Benz partner for details of other function restrictions

03 Mercedes-Benz Bluetooth® (SAP) telephone module

The telephone module is designed to extend the mobile communication system in your Mercedes-Benz. Just connect it to your Convenience Telephony system (Code 386) in the centre armrest, and start using your mobile via the on-board hands-free system.

Two versions of the Mercedes-Benz Bluetooth SAP¹ telephone module are available: one in the form of a closed box [picture 03] and the other with a corded handset [not pictured]. Both versions feature a SIM card reader.

Other advantages of the telephone module:

- Access to contact details saved on SIM card
- Optimum reception quality as a result of using vehicle's external aerial
- Read and receive text messages
- Charge mobile phone via USB interface (closed box only)

1) SAP (SIM Access Profile) allows the module to read your mobile phone's SIM card

04 Mobile-phone holders

When it comes to selecting a mobile for your Mercedes-Benz, you've never had so much choice. One "click" is all it takes to replace the mobile-phone holder. It takes a matter of seconds and is as straightforward as inserting the mobile into the holder itself.

Changing your mobile and even alternating between different models of mobile no longer presents a problem. There are no compromises when it comes to convenience-enhancing telephone technology either.

Further advantages of a mobile-phone holder:

- Optimum reception quality as a result of using vehicle's external aerial
- Mobile's battery is charged
- Access to internal phone memory
- Convenient operation using multifunction steering wheel

To use a mobile-phone holder, your car must be factory-fitted with optional extra Code 386, Convenience Telephony. Holders are available for various current Nokia, BlackBerry, Apple and Sony Ericsson mobile phones

For further information about using the phone while in your car, go to www.mercedes-benz.com/connect or contact your Mercedes-Benz partner

Telematics

Multimedia
Telephony



04

01

Mercedes-Benz



Interior

Child safety
Interior appointments

01 Illuminated door sill panel

Endurance test

Our genuine accessories have to live up to your expectations in every situation – and that includes Mercedes-Benz floor mats.

We develop the mats with the same meticulous attention to detail we devote to seemingly more important components. The result is that our mats are optimally tailored to your Mercedes-Benz in terms of size and colour. And they can take a lot of punishment too.

All just so you can tread all over them.



01 CLASSIC velour floor mats

02 CLASSIC rep floor mats

03 CLASSIC all-season floor mats

Durable, hardwearing materials. Precision-tailored to your SLK. Odourless. Can be clip-fastened to the floor of the vehicle to prevent slipping.

Available in black



Cup holder for the centre console | not pictured

Black. Insert for the centre console. Holds up to two drink containers within easy reach. The insert simply slots into the standard stowage compartment in the centre console

04 Illuminated door sill panels

The white illuminated Mercedes-Benz lettering is activated every time you open the door to get in or out. These illuminated door sill panels, in stainless steel, are a further “highlight” of the SLK





02

01



01



03

Mercedes-Benz child safety

All Mercedes-Benz child seats are available in the “Limited Black” design. The covers are washable and very hardwearing. Replacement covers for the head sections of all seats are available in flannel grey and chilli red [pictures 04 and 05] as well as a complete replacement cover in the popular “DaimlerSquare” design [picture 06].

Mercedes-Benz child seat systems offer automatic child seat recognition for automatic deactivation of the passenger airbag. Your vehicle features automatic child seat recognition (optional extra Code U18) so the passenger airbag is deactivated when a Mercedes-Benz child seat is used. All child seats are also suitable for use in vehicles without ISOFIX attachment points

01 “BABY-SAFE plus II” child seat

The patented D-SIP® system offers optimum side-impact protection for babies from birth. The integral recline system allows a flatter reclining position for your newborn. Headrest and harness height can be adjusted to suit your child. For babies up to around 15 months (up to 13 kg)

02 “DUO plus” child seat

Optimum safety for children between the ages of around 8 months and 4 years (9 to 18 kg). Fitted as standard with top tether, an additional belt for securing the head section, a height-adjustable shoulder belt and ventilation channels. With automatic child seat recognition and ISOFIX attachment points. Adjustable tilt

03 “KidFix” child seat

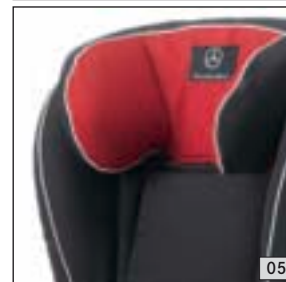
Booster seat for optimum side-impact protection, with height-adjustable backrest. The “KidFix” seat is secured using the 3-point seat belt and ISOFIT attachment points. For children between the ages of around 3.5 and 12 (15 to 36 kg)

04–06 Child seat covers

Replacement covers are available for all child seat models – either in the form of a cover for the head section in flannel grey [picture 04] or chilli red [05] or as a complete replacement cover in the popular “DaimlerSquare” design [06]



04



05



06





Cargo & Care

Boot accessories

01

01 Shallow boot tub

01 Coolbox

Black/grey. Hard case with fabric cover featuring pockets for extra items. Cold/hot switch. Capacity: 24 litres. 12 V connection. Adjustable carrying strap

02 Coolbag

Black. Fabric outside, plastic liner inside. Outside pockets offer plenty of room for extra items. Capacity: 12 litres. 12 V connection. Adjustable carrying strap

03 Rectifier

Allows the coolbox and the coolbag to be connected to a 230 V socket at home

04 Shopping crate

Anthracite. Collapsible

05 Charger with trickle charge function

With its cutting-edge technology, the Mercedes-Benz charger ensures the longest possible battery life. Available in a 3.6 amp version and a 25 amp version

06 Luggage-securing feature

Ingenious solution to the problem of luggage sliding around in the boot. Attaches securely around the object in question thanks to Velcro fastening

07 Vehicle tool kit

6-piece tool kit in practical zipped bag. Includes jack, wheel wrench, wheel centering bolt, chock, shim plate and gloves

08 Fluorescent jackets

Already compulsory in many countries, the bright orange and yellow fluorescent jackets with reflective stripes are conspicuous even in the dark. Available individually or as a pack of two



Cargo & Care

Boot accessories



09 Concertina load sill protector

Protects bumper and load sill from scratches.
Can be connected to shallow boot tub

10 Shallow boot tub

Simple to clean. Non-slip thanks to PP-Flex material.
Suitable for transporting foodstuffs. Concertina load
sill protector can be connected to the tub



I. Design & Development

Mercedes-Benz genuine accessories make your dream car a reality - while ensuring that it remains a Mercedes-Benz through and through:

- ▶ Individualisation options are developed in accordance with the Mercedes-Benz car design philosophy.
- ▶ The use of CAD data from Mercedes-Benz Vehicle Development ensures precision-fit accessories.

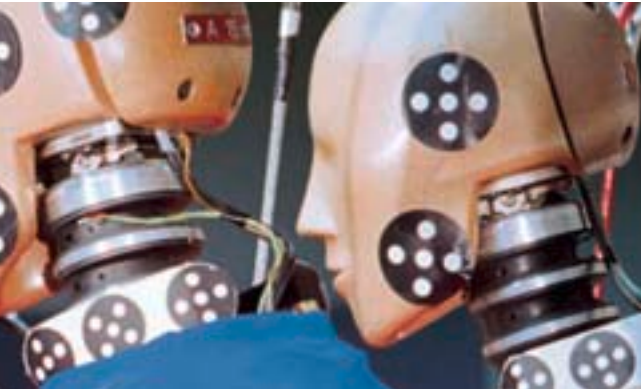
II. Quality & Safety

When it comes to Mercedes-Benz vehicles, quality and safety are paramount. You can feel equally safe with Mercedes-Benz genuine accessories as a result of:

- ▶ Stringent safety measures and extensive load testing, including the use of crash test facilities and the wind tunnel.
- ▶ Harmonised development of both vehicle and Mercedes-Benz genuine accessories.
- ▶ The highest of standards, far in excess of those prescribed by law.

Mercedes through and through

When you drive a Mercedes-Benz, you do so for the best of reasons. Why should your choice of accessories be governed by different standards? Pioneering when it comes to design and technology, Mercedes-Benz genuine accessories deliver on the promises of a major brand.



III. Function & Operation

Mercedes-Benz genuine accessories form part of the vehicle concept from the outset. This results in impressive functional solutions:

- ▶ Fully integrated telematics products can be operated safely and conveniently using the multifunction steering wheel.
- ▶ Roof-mounted carrier systems can be fitted quickly and without the use of additional tools.
- ▶ Instructions and manuals are in standard format and easy to understand.

IV. Advice & Fitting

No one is as familiar with the ins and outs of your vehicle as our employees. And the same goes for Mercedes-Benz genuine accessories:

- ▶ Contact your Mercedes-Benz Service and Sales partners for expert advice.
- ▶ Trust our trained specialists when it comes to fitting Mercedes-Benz genuine accessories.



01

Collection

Personal accessories



01 Sunglasses

Open-ended possibilities

Roadster drivers love open-top driving. If you feel, as we do, that it's all part and parcel of an open-minded, cosmopolitan approach to life, then you've come to the right place - welcome to the Mercedes-Benz Collection.

01 Unisex sunglasses

Sporty, classic aviator frame in metal. Zeiss lenses. Mercedes-Benz embossed on each arm. 3D star logo on bridge. Supplied with case and microfibre cloth



01



02

Collection

Personal accessories



02 Men's watch

Chronograph watch with black dial featuring white numerals. Black genuine leather strap with white topstitching. Silver-coloured details. Radial milling in centre of dial. Recessed subdials. Silver-coloured "R172" print at 6 o'clock. 3D star logo

03 Umbrella

Black, with grey aluminium/fibre glass ribs. Water-repellent, dirt-repellent, Teflon-coated canopy. Automatic opening and closing. Plastic handle with elastic carrying loop. White logo print on canopy. Length approx. 30 cm. Diameter when open approx. 105 cm



04 "SLK" key ring

Replica of symbol on boot lid, with high-quality rhodium-plated finish

05 Model car, 1:18

obsidian black
Manufacturer: Minichamps

Model cars are available in various scales (1:18, 1:43 and 1:87) and colours



01

02

AMG

Bodystyling

Interior

Light-alloy wheels



03

- 01 AMG front apron
- 02 AMG 5-spoke wheel
- 03 AMG side skirts



01 | 45.7 cm | 18"

02

01 AMG 5-spoke wheel

Finish: silver/high-sheen and titanium grey/high-sheen

Wheel: 7.5J x 18 ET 42 | Tyre: 225/40 R18

B6 603 1482 (silver/high-sheen); B6 603 1521 (titanium grey/high-sheen)

Option for rear axle:

Wheel: 8.5J x 18 ET 36 | Tyre: 245/35 R18

B6 603 1483 (silver/high-sheen); B6 603 1522 (titanium grey/high-sheen)

02 AMG bodystyling

A sporty exterior for your SLK. The AMG bodystyling components – front apron, rear apron and side skirts – are designed for optimum dynamism | also pictured on previous page

03 AMG floor mats

With embroidered AMG lettering



04 AMG 5-spoke wheel

Finish: black/high-sheen

Wheel: 7.5J x 18 ET 42

Tyre: 225/40 R18

B6 603 1523

Option for rear axle:

Wheel: 8.5J x 18 ET 36

Tyre: 245/35 R18

B6 603 1524

Available from 3rd quarter of 2011

05 AMG carbon fibre trim

Carbon fibre trim elements for doors and centre console

06 AMG door pin

In high-quality stainless steel



AMG

Bodystyling

Interior

Light-alloy wheels



AMG door sill panels, white illumination | not pictured

In brushed stainless steel with white LED illumination

Available from 3rd quarter of 2011

AMG door sill panels, not illuminated | not pictured

Available in brushed stainless steel

Available from 3rd quarter of 2011

AMG multifunction sports steering wheel | not pictured

3-spoke design, flattened at top and bottom, with aluminium shift paddles. Black nappa leather, perforated in grip area

Available from 3rd quarter of 2011

AMG indoor car cover | not pictured

Silver-coloured, with black AMG logo

Genuine accessories for the SLK-Class

Light-alloy wheels are supplied without tyres, wheel bolts or hub caps

Further colour variants for individual products can be found in the separate price list for this brochure

Description	p	Item no.
AMG carbon fibre trim	37	A172 720 3822
AMG door pin	37	A000 766 0228
AMG door sill panels, not illuminated	37	A172 680 2135
AMG door sill panels, white LED illumination	37	A172 680 2235
AMG floor mats, LHD, complete set, black	36	A172 680 2448
AMG front apron (with PARKTRONIC)	36	A172 880 5773
AMG indoor car cover	37	A172 899 0086
AMG light-alloy wheels	36	see page 36
AMG multifunction sports steering wheel, 3-spoke design	37	A172 460 4803
AMG rear apron (with PARKTRONIC)	36	A172 880 1245
AMG side skirts	36	A172 690 1240
"BABY-SAFE plus II" child seat, Limited Black, with automatic child seat recognition	23	A000 970 2000 9H95
Sun canopy for "BABY-SAFE plus II", Limited Black	-	A000 970 0155 9H95
Becker® MAP PILOT, in conjunction with Code 508	15	A172 900 6203
Bluetooth® (SAP) telephone module, box	16	A212 906 8600
Boot tub, shallow	27	A172 814 0041

Description	p	Item no.
Charger (ECE version, 3.6 A)	26	A000 982 0121
Charger (ECE version, 25 A)	26	A000 982 0321
Child seat cover for "BABY-SAFE plus II", DaimlerSquare	23	A000 970 0981 9G43
Child seat cover for "BABY-SAFE plus II", Limited Black	23	A000 970 0981 9H95
Child seat cover for "DUO plus", DaimlerSquare	23	A000 970 0481 9G43
Child seat cover for "DUO plus", Limited Black	23	A000 970 0481 9H95
Child seat cover for "KidFix", DaimlerSquare	23	A000 970 0681 9G43
Child seat cover for "KidFix", Limited Black	23	A000 970 0681 9H95
Chrome-look indicator bulbs (ECE)	09	A000 580 2410
CLASSIC all-season floor mats, LHD, set of 2, black	20	A172 680 1248 9G33
CLASSIC rep floor mats, LHD, complete set, black	20	A172 680 1848 9G32
CLASSIC velour floor mats, LHD, complete set, black	20	A172 680 0048 9F87
COMAND Online multimedia system with 6-DVD changer	14	on request
Compact umbrella	33	B6 695 7917
Concertina load sill protector	27	A212 680 0246
Coolbag	26	B6 681 8725
Coolbox	26	A000 820 4206
Cup holder for the centre console	21	A172 810 0213
"DUO plus" child seat, Limited Black, with automatic child seat recognition	23	A000 970 1100 9H95
Europe navigation DVD for COMAND Online	14	on request
Fluorescent jacket, orange	26	A000 583 0461
Fluorescent jackets, pack of two, orange/yellow	26	A000 583 0361

Description	p	Item no.
Headrest cover for "BABY-SAFE plus II", chilli red	23	A000 970 0156 3E16
Headrest cover for "BABY-SAFE plus II", flannel grey	23	A000 970 0156 7N37
Headrest cover for "DUO plus", chilli red	23	A000 970 0356 3N16
Headrest cover for "DUO plus", flannel grey	23	A000 970 0356 7N37
Headrest cover for "KidFix", chilli red	23	A000 970 0256 3N16
Headrest cover for "KidFix", flannel grey	23	A000 970 0256 7N37
Hub caps , black with chrome star	07	B6 647 0200
Hub caps , Roadster design, black	07	B6 647 0201
Hub caps , Roadster design, blue	07	B6 647 0120
Hub caps , sterling silver with chrome star	07	B6 647 0206
Hub caps , titanium silver with chrome star	07	B6 647 0203
Illuminated door sill panels (set of 2)	21	A172 680 2335
"KidFix" child seat , Limited Black, with automatic child seat recognition	23	A000 970 1900 9H95
Light-alloy wheels	06	from page 06
Luggage-securing feature	26	A001 987 1414
Media Interface video cable (ECE)	16	A001 827 8004
Men's watch	33	B6 695 7804
MercedesSport 5-twin-spoke wheel	10	see page 10
MercedesSport fin attachments (set of 6) Adhesive (B6 688 1304) must be ordered separately. Please contact your Mercedes-Benz partner	10	A172 880 0082
MercedesSport rear spoiler	10	A172 793 0088
Mobile-phone holders The range is being extended all the time. Please contact your Mercedes-Benz partner for details	16	on request
Model car, 1:18 , obsidian black	33	B6 696 0514

Description	p	Item no.
Rectifier	26	A000 982 0021
Rim locks	07	B6 647 0155
RUD-matic DISC snow chain system (255/45 R17)	09	B6 755 0018
SD memory card	16	B6 782 3973
Shopping crate	26	B6 647 0995
SLK key ring	33	B6 695 7515
Sunglasses , unisex	32	B6 695 4194
Tyre pressure gauge	07	B6 658 8140
Valve caps	07	B6 647 2001
Vehicle tool kit	26	B6 685 0788
Wheel bolts	07	on request

March 2011

Please note: changes may have been made to the products since this brochure went to press (01.03.2011). The manufacturer reserves the right to make changes to the design, form, colour and specification during the delivery period, provided these changes, while taking into account the interests of the vendor, can be deemed reasonable with respect to the purchaser. Where the vendor or the manufacturer uses symbols or numbers to describe an order or the subject of an order, no rights may be derived solely from these. The illustrations may show accessories and items of optional equipment which are not part of standard specification. Colours may differ slightly from those shown in the brochure, owing to the limitations of the printing process. This brochure is distributed internationally. It provides a general indication of the range of models, features, optional extras and/or colours available in various countries. Some of the models, features, optional extras and/or colours may not be available in your country or may only be available in a different specification. Additionally some models, features, optional extras and/or colours may only be available in combination with others. For current and more specific information in relation to the range of models, features, optional extras and/or colours available in your country, and their pricing, you should contact your nearest authorised Mercedes-Benz Passenger Car Dealer.