

BMW M6  
Coupé  
Convertible &  
Gran Coupé

[bmw.com.au](http://bmw.com.au)



The Ultimate  
Driving Machine



# THE BMW M6.

## SPECIFICATION GUIDE.

**BMW EfficientDynamics**  
Less consumption. More driving pleasure.

# MODELS.

	Transmission	Cylinder / Capacity cm <sup>3</sup>	Power / Torque	Combined fuel consumption l/100km	Acceleration 0-100km/h
<b>Petrol Models</b>					
<b>M6 Coupé</b>	7-speed M double clutch with Drivelogic	8-cylinder 4,395	412 kW 680 Nm	9.9	4.2 sec
<b>M6 Convertible</b>	7-speed M double clutch with Drivelogic	8- cylinder 4,395	412 kW 680 Nm	10.3	4.3 sec
<b>M6 Gran Coupé</b>	7-speed M double clutch with Drivelogic	8-cylinder 4,395	412 kW 680 Nm	9.9	4.2 sec

BMW recommends the use of RON 95 super unleaded petrol. Unleaded 91 RON and higher with a maximum ethanol content of 10% (E10) may also be used. Output and fuel consumption figures apply to RON98 fuel. All engines meet the EU5 emissions standard. Fuel consumption is determined in accordance with the ECE driving cycle (93/116/EU), which consists of approximately one third urban traffic and two thirds extra-urban driving (based on the distance covered). CO<sub>2</sub> emissions are measured in addition to fuel consumption. Optional equipment (e.g. wider tyres) can have a significant impact on fuel consumption.

## ■ Standard

While BMW Group Australia has endeavoured to ensure that all information, representations, illustrations and specifications contained in these materials are accurate at the time of publication (22 April 2014), the information is general in nature only. Product features, specifications, models and prices are subject to change without notice. The general information in these materials should always be read in conjunction with information from authorised BMW dealers. To the extent permitted by law, BMW Group Australia excludes all express and implied warranties or guarantees and all liability, whether direct, indirect, special or consequential, arising from negligence or otherwise relating to the use of these materials, any inaccuracies and for any non-compliance by any vehicle with any representation, illustration, specification, description, product feature, colour, or other information contained in these materials.

© BMW Australia Ltd (ABN 11 004 675 129) ("BMW Group Australia") and BMW AG, Munich/Germany. All rights reserved.

# STANDARD EQUIPMENT.

	M6 Coupé	M6 Convertible	M6 Gran Coupé
<b>Transmission and technology</b>			
<b>7-speed M Double Clutch Transmission with Drivelogic</b>	■	■	■
<b>Active M Differential</b> , optimises the superior properties of the rear-wheel drive, resulting in outstanding agility and enhanced traction	■	■	■
<b>Auto Start/Stop function</b>	■	■	■
<b>Brake Energy Regeneration</b>	■	■	■
<b>Brake-pad wear indicator</b>	■	■	■
<b>Condition Based Service</b> , inspections are scheduled to suit the way the car is driven	■	■	■
<b>Dynamic Damper Control</b> , adapts the shock absorber characteristics to the driving situation (features Comfort, Sport and Sport+ modes)	■	■	■
<b>M Drive Mode</b> , features 2 M buttons on the steering wheel, enabling the driver to program two specific driving profiles to suit individual preferences and call these up at the touch of a button	■	■	■
<b>M Servotronic power steering</b>	■	■	■
<b>M TwinPower Turbo 8-cylinder petrol engine</b> , incl. cross-bank exhaust header, combines two twin-scroll turbochargers with Valvetronic, Double-VANOS and High Precision Injection	■	■	■
<b>Parking brake</b> , electromechanical incl. automatic hold function	■	■	■
<b>Start/Stop button</b> , incl. keyless ignition	■	■	■
<b>Safety</b>			
<b>Active headrests</b> , front, automatic triggering of the headrests in the event of a crash, to reduce whiplash	■	■	■
<b>Active Protection</b> , safety package for initiating protective measures for the occupants if an accident situation is imminent: belt tensioning and closing of windows as well as autonomous braking after a collision	■	■	■
<b>Airbags</b> : driver and front passenger airbags, seat occupancy detector for front passenger airbag; side airbags for driver and front passenger (with combined head airbags for Convertible), head airbags front and rear (Coupé and Gran Coupé only)	■	■	■
<b>Central locking</b> with electronic immobiliser; crash sensor; fuel tank filler cap integrated with central locking; remote control	■	■	■
<b>Complimentary BMW Driving Experience Intensive Course</b> , offer redeemable for one customer per vehicle purchase; only available for new owners within the new vehicle warranty period	■	■	■
<b>Dynamic Braking Lights</b> , flashing brake lights and hazard indicator under extreme braking	■	■	■
<b>Dynamic Stability Control (DSC)</b> incl. Dynamic Traction Control (DTC), Anti-lock Braking System (ABS), Cornering Brake Control (CBC), Pullaway Assistant, Brake Assist and M Dynamic Mode	■	■	■
<b>High-Performance Brakes</b> : compound brakes at the front and rear, inner-vented with brake callipers in Blue	■	■	■
<b>Roll-over protection system</b>		■	
<b>Safety body shell</b> : bumper system with deformation zones at the front and rear, easily-replaceable deformation elements that absorb impacts at speeds up to 15km/h; side impact protection, active bonnet	■	■	■
<b>Seat belts</b> : 3-point seat belts in all seats, incl. belt stopper, pyrotechnic belt tensioner and belt force limiter in front	■	■	■
<b>Warning triangle and first aid kit</b>	■	■	■
<b>Wheels and tyres</b>			
<b>BMW light-alloy wheels, Double-spoke styling 343M</b> , front 9.5 J x 20" with 265/35 R20 rear 10.5 J x 20" with 295/30 R20 tyres	■	■	
<b>BMW light-alloy wheels, Double-spoke styling 433M</b> , front 9.5 J x 20" with 265/35 R20, rear 10.5 J x 20" with 295/30 R20 tyres			■
<b>Locking wheel bolts</b>	■	■	■

## ■ Standard

While BMW Group Australia has endeavoured to ensure that all information, representations, illustrations and specifications contained in these materials are accurate at the time of publication (22 April 2014), the information is general in nature only. Product features, specifications, models and prices are subject to change without notice. The general information in these materials should always be read in conjunction with information from authorised BMW dealers. To the extent permitted by law, BMW Group Australia excludes all express and implied warranties or guarantees and all liability, whether direct, indirect, special or consequential, arising from negligence or otherwise relating to the use of these materials, any inaccuracies and for any non-compliance by any vehicle with any representation, illustration, specification, description, product feature, colour, or other information contained in these materials.

# STANDARD EQUIPMENT.

	M6 Coupé	M6 Convertible	M6 Gran Coupé
<b>Exterior design</b>			
<b>BMW Individual high-gloss Shadow Line</b>	■	■	■
<b>Carbon fibre rear diffuser</b>			■
<b>Carbon fibre roof</b>	■		■
<b>Softtop roof</b> , fully automatic (colour must be specified when ordering)		■	
<b>Exhaust pipes</b> , Chrome-plated, dual, round, left and right	■	■	■
<b>Front ornamental grille</b> , with kidney grille bars black with Chrome bezel. Front face of longitudinal kidney bars Chrome-plated, with M6 marking	■	■	■
<b>M exterior mirrors in body colour</b> , heated, (actively controlled as a function of outside temperature), aspheric, electrically adjustable. Mirror base and bottom part of mirror housing in Black high-gloss	■	■	■
<b>M rear spoiler</b>	■		■
<b>Metallic Paint</b>	■	■	■
<b>ConnectedDrive</b>			
<b>Intelligent Emergency Call</b> , BMW ConnectedDrive automated transmission of vehicle accident information and telephone call for assistance to the BMW ConnectedDrive Call Centre. Emergency services are informed and deployed if required. Manual emergency call can also be initiated via SOS button	■	■	■
<b>Internet</b> , BMW ConnectedDrive independent, in-vehicle internet access via the pre-fitted vehicle SIM card. When stationary, websites can be called up on the Control Display by entering the URL using the iDrive Touch Controller. 1 year subscription	■	■	■
<b>TeleServices</b> , BMW ConnectedDrive automated transmission of service-related vehicle data to your preferred service dealer. Includes TeleServices Battery Guard and BMW Breakdown calls to Roadside Assistance	■	■	■
<b>BMW ConnectedDrive Freedom</b>			
- ConnectedDrive Services: internet-based services including BMW Online (News, Weather, Google local search, Office, Apps), and the BMW Connected App. 3 year subscription			
- Remote Services: remote door lock/unlock, ventilation control, headlight flash, Google local search with send-to-car function and vehicle finder up to 1.5km radius	■	■	■
- Real Time Traffic Information: display of current traffic information in the navigation map with expected travel time delays to your destination. Includes suggestions on alternative routes. 3 year subscription			
- Concierge Services: 24/7 assistance via ConnectedDrive call centre at the touch of a button, for assistance with searching for destinations, POIs, and sends these addresses straight to your vehicle. 3 year subscription			
<b>Driver assistance</b>			
<b>Cruise Control with braking function</b>	■	■	■
<b>Driving Assistant</b> , camera-based driver assistance system consisting of Lane Departure Warning, Forward Collision Warning and Pedestrian Warning with light city braking function	■	■	■
<b>Head-Up Display</b> , full colour with M View. Important driving information is projected onto the windscreen in the driver's field of vision	■	■	■
<b>Lane Change Warning System</b> , detects and alerts driver to oncoming vehicles and vehicles in driver's blind spot when the indicator is activated, with a discreet vibration of the steering wheel and visual warning on the exterior mirror	■	■	■
<b>Park Distance Control (PDC)</b> , front and rear	■	■	■
<b>Rear View Camera</b>	■	■	■
<b>Speed Limit Device</b> , enables setting of desired maximum speed	■	■	■
<b>Surround View</b> , incl. Top View and Side View. Top View, provides a bird's-eye perspective of the vehicle; Side View provides visibility in situations where vision is obscured, through cameras located each side of the front bumper	■	■	■

## ■ Standard

While BMW Group Australia has endeavoured to ensure that all information, representations, illustrations and specifications contained in these materials are accurate at the time of publication (22 April 2014), the information is general in nature only. Product features, specifications, models and prices are subject to change without notice. The general information in these materials should always be read in conjunction with information from authorised BMW dealers. To the extent permitted by law, BMW Group Australia excludes all express and implied warranties or guarantees and all liability, whether direct, indirect, special or consequential, arising from negligence or otherwise relating to the use of these materials, any inaccuracies and for any non-compliance by any vehicle with any representation, illustration, specification, description, product feature, colour, or other information contained in these materials.

# STANDARD EQUIPMENT.

	M6 Coupé	M6 Convertible	M6 Gran Coupé
<b>Climate comfort and glazing</b>			
<b>Automatic air conditioning</b> with 2-zone control, with extended contents, incl. separate automatic temperature control for driver and passenger with five intensity stages, separate air volume control and air distribution, fogging sensor, solar sensor and residual heat utilisation, Automatic Air Recirculation (AAR), charcoal filter, ALL function for transferring driver's settings to passenger. Additional control functions for driving with softtop open (Convertible only), including air volume control depending on driving speed, adjustment of temperature depending on outside temperature	■	■	
<b>Automatic air conditioning</b> with 4-zone control. Separate controls for driver/passenger and rear passengers			■
<b>Climate comfort windscreen</b> , reduces unwanted heating of the interior by means of an infrared reflective surface	■	■	■
<b>Heat/sun protection glazing</b>	■	■	■
<b>Roller sunblinds for rear window and rear side windows</b> , electric			■
<b>Light and sight</b>			
<b>3<sup>rd</sup> brake light</b> , centred on luggage-compartment lid	■	■	
<b>3<sup>rd</sup> brake light</b> , integrated into the roof across width of rear window			■
<b>Adaptive LED headlights, inc. headlight washer system</b> , improved vision with a light colour similar to daylight and optimum, homogeneous illumination of the carriageway	■	■	■
<b>Ambient light</b> incl. vicinity lighting	■	■	■
<b>High-Beam Assist</b> , automatically switches between high and low beam	■	■	■
<b>Interior and exterior mirrors with automatic anti-dazzle function</b>	■	■	■
<b>Rain sensor</b> , incl. automatic headlight activation and fogging sensor	■	■	■
<b>Rear fog lights</b> , integrated into rear light panel	■	■	■
<b>Interior design</b>			
<b>BMW Individual roofliner Alcantara Anthracite</b>	■		
<b>BMW Individual roofliner Alcantara Anthracite</b> with leather centre in upholstery colour			■
<b>Door sill finishers</b> , illuminated with M6 designation	■	■	■
<b>Interior trim finishers 'Carbon Fibre'</b>	■	■	
<b>Interior trim finishers 'Carbon Fibre'</b> with Chrome accent band in Black			■
<b>Upholstery</b> , full leather merino, incl. BMW Individual instrument panel in leather finish	■	■	■
<b>Comfort and interior equipment</b>			
<b>Alarm system</b> with remote control	■	■	■
<b>Armrest front</b> , with storage compartment	■	■	■
<b>Automatic soft close function</b> for doors	■	■	■
<b>Comfort Access System</b> , keyless access to the vehicle	■	■	■
<b>Cupholders</b> , front	■	■	■
<b>Cupholders</b> , rear centre armrest			■
<b>Floor mats in Velour</b>	■	■	

## ■ Standard

While BMW Group Australia has endeavoured to ensure that all information, representations, illustrations and specifications contained in these materials are accurate at the time of publication (22 April 2014), the information is general in nature only. Product features, specifications, models and prices are subject to change without notice. The general information in these materials should always be read in conjunction with information from authorised BMW dealers. To the extent permitted by law, BMW Group Australia excludes all express and implied warranties or guarantees and all liability, whether direct, indirect, special or consequential, arising from negligence or otherwise relating to the use of these materials, any inaccuracies and for any non-compliance by any vehicle with any representation, illustration, specification, description, product feature, colour, or other information contained in these materials.

# STANDARD EQUIPMENT.

	M6 Coupé	M6 Convertible	M6 Gran Coupé
<b>Comfort and interior equipment (cont.)</b>			
Floor mats in Velour with leather binding			■
M leather steering wheel, including twin-clutch gearbox gearshift paddles	■	■	■
On-board computer, incl. Check Control and external temperature on the Info Display (9.2")	■	■	■
Personal Profile, for personalisation of important controls	■	■	■
Power socket (12V), 1 in small folding compartment in centre console	■	■	■
<b>Seats/seat comfort</b>			
-Active Seat ventilation, front	■	■	■
-M multifunctional seats for driver and front passenger	■	■	■
-Electric seat adjustment with memory function for driver's seat and electric steering column adjustment	■	■	■
-Lumbar support for driver and front passenger, electric	■	■	■
-Seat heating for driver and front passenger	■	■	■
-2 individually formed rear seats	■	■	
-2 + 1 individually formed rear seats			■
Steering column adjustment, electric	■	■	■
Through-loading system, 60:40 split folding rear backrest			■
Tool kit	■	■	■
<b>Entertainment, communication and information</b>			
6 Disc DVD Changer	■	■	■
AUX-IN connection	■	■	■
<b>Convenience telephony with extended Smartphone connectivity</b> Enables wireless connection of a compatible Bluetooth mobile phone to the vehicle, including hands-free facility and voice control Extended functionality depending on the features of the Bluetooth device: - View organiser data from the customer's mobile phone on the Control Display by selecting 'Office' from the menu - View contact photos from the address book of the customer's mobile phone on the Control Display - Bluetooth audio streaming - At any given time, 2 mobile phones and 1 audio player can be paired via Bluetooth -Office functions -Album cover display Expansion by separate snap-in adapter possible (available through Genuine BMW Accessories) for charging function, connection to external aerial, playback of music and track names shown on the Control Display Check the compatibility of your mobile phone at <a href="http://bmw.com/Bluetooth">bmw.com/Bluetooth</a>	■	■	■
harman/kardon Surround Sound system, 12 loudspeakers (Convertible), 16 loudspeakers (Coupé/Gran Coupé), 600W 9-channel digital amplifier, with individually adjustable equalising	■	■	■
iDrive Touch Controller on centre console, incl. one-touch keys	■	■	■
Navigation System Professional with 10.2" Control Display, iDrive Touch Controller, split screen function, 3D maps, satellite images and electronic owner's handbook. Incl. Radio Professional with DVD drive (triple-tuner, Audio/video DVD playback and MP3 decoder) and 20GB hard drive for storage of audio files	■	■	■
TV function, digital reception (DVB-T)	■	■	■
USB audio interface, enables connection of an MP3 player, Apple iPod or USB memory stick via the USB interface	■	■	■

## ■ Standard

While BMW Group Australia has endeavoured to ensure that all information, representations, illustrations and specifications contained in these materials are accurate at the time of publication (22 April 2014), the information is general in nature only. Product features, specifications, models and prices are subject to change without notice. The general information in these materials should always be read in conjunction with information from authorised BMW dealers. To the extent permitted by law, BMW Group Australia excludes all express and implied warranties or guarantees and all liability, whether direct, indirect, special or consequential, arising from negligence or otherwise relating to the use of these materials, any inaccuracies and for any non-compliance by any vehicle with any representation, illustration, specification, description, product feature, colour, or other information contained in these materials.

# OPTIONAL EQUIPMENT.

		M6 Coupé	M6 Convertible	M6 Gran Coupé
<b>Packages</b>				
7MA	<b>Competition Package</b> -Power increase to 423kW -Sport suspension -Sportier steering -20" M light alloy wheels, Double-spoke 601M (M6 Gran Coupé retains standard wheel) -Sport exhaust system with exhaust tailpipe in Black Chrome	<input type="checkbox"/>	<input type="checkbox"/>	<input type="checkbox"/>
<b>Wheels and tyres</b>				
2NZ	<b>BMW M light-alloy wheels Double-spoke styling 343M</b> , front 9.5 J x 20" with 265/35 R20 rear 10.5 J x 20" with 295/30 R20 tyres Alternative price in combination with Competition Package (7MA)	<input checked="" type="checkbox"/>	<input checked="" type="checkbox"/>	NCO
		NCO	NCO	NCO
2TX	<b>BMW M light-alloy wheels, Double-spoke styling 601M</b> , front 9.5 J x 20" with 265/35 R20 rear 10.5 J x 20" with 295/30 R20 tyres Included in and only available with Competition Package (7MA) for M6 Coupé and Convertible Available as No Cost Option with Competition Package (7MA) for M6 Gran Coupé	<input type="checkbox"/>	<input type="checkbox"/>	NCO
2TY	<b>BMW light-alloy wheels, Double-spoke styling 343M, forged black</b> , front 9.5 J x 20" with 265/35 R20 rear 10.5 J x 20" with 295/30 R20 tyres	<input type="checkbox"/>	<input type="checkbox"/>	<input type="checkbox"/>
<b>Options</b>				
2NK	<b>M Carbon ceramic brake</b> with matt Gold brake callipers and 'M' logo	<input type="checkbox"/>	<input type="checkbox"/>	<input type="checkbox"/>
2VB	<b>Tyre pressure monitor</b> , electric monitoring system of tyre pressure	<input type="checkbox"/>	<input type="checkbox"/>	<input type="checkbox"/>
248	<b>Steering wheel heating</b>	<input type="checkbox"/>	<input type="checkbox"/>	<input type="checkbox"/>
3YA	<b>Softtop Anthracite Silver effect</b> One softtop colour must be specified when ordering		NCO	
3YE	<b>Softtop Beige</b> One softtop colour must be specified when ordering		NCO	
320	<b>Model designation deletion</b>	NCO	NCO	NCO
356	<b>Climate comfort laminated glass</b> Not available with BMW Individual sun protection glazing (761)	<input type="checkbox"/>		<input type="checkbox"/>
387	<b>Wind deflector</b>		<input type="checkbox"/>	
388	<b>Softtop Black</b> One softtop colour must be specified when ordering		NCO	
4AS	<b>Interior trim</b> , Fine-wood trim Poplar Grain grey	NCO	NCO	NCO
4CV	<b>Interior trim</b> , American Oak	NCO	NCO	NCO
415	<b>Roller sunblind for rear window</b> , electric	<input type="checkbox"/>		<input checked="" type="checkbox"/>
441	<b>Smoker's package</b>	<input type="checkbox"/>	<input type="checkbox"/>	<input type="checkbox"/>
455	<b>Active Seats for driver and front passenger</b> , electric	<input type="checkbox"/>	<input type="checkbox"/>	<input type="checkbox"/>
464	<b>Ski bag</b>	<input type="checkbox"/>	<input type="checkbox"/>	<input type="checkbox"/>
496	<b>Seat heating for rear seats</b>			<input type="checkbox"/>

■ Standard □ Optional NCO No Cost Option

While BMW Group Australia has endeavoured to ensure that all information, representations, illustrations and specifications contained in these materials are accurate at the time of publication (22 April 2014), the information is general in nature only. Product features, specifications, models and prices are subject to change without notice. The general information in these materials should always be read in conjunction with information from authorised BMW dealers. To the extent permitted by law, BMW Group Australia excludes all express and implied warranties or guarantees and all liability, whether direct, indirect, special or consequential, arising from negligence or otherwise relating to the use of these materials, any inaccuracies and for any non-compliance by any vehicle with any representation, illustration, specification, description, product feature, colour, or other information contained in these materials.

© BMW Australia Ltd (ABN 11 004 675 129) ("BMW Group Australia") and BMW AG, Munich/Germany. All rights reserved.

## OPTIONAL EQUIPMENT.

		M6 Coupé	M6 Convertible	M6 Gran Coupé
<b>Options (cont.)</b>				
6F2	<b>Bang &amp; Olufsen high-end Surround Sound System</b> , 12 loudspeakers on Convertible / 16 loudspeakers on Coupé and Gran Coupé, 1,000 W Convertible / 1,200W on Coupe and Gran Coupé, Acoustic Lens, DIRAC dimensions technology and aluminium speaker frames with light feature	<input type="checkbox"/>	<input type="checkbox"/>	<input type="checkbox"/>
6UK	<b>BMW Night Vision with Pedestrian Recognition and Acute Warning</b> , identifies potential obstacles and roadside pedestrians and animals at distances up to 300m, displaying an image on the control display and an acute warning symbol in the instrument cluster	<input type="checkbox"/>	<input type="checkbox"/>	<input type="checkbox"/>
654	<b>Digital radio tuner – DAB+</b> , exceptional sound quality, improved reception and a wide range of special-interest channels For information on coverage please visit <a href="http://digitalradioplus.com.au">digitalradioplus.com.au</a>	<input type="checkbox"/>	<input type="checkbox"/>	<input type="checkbox"/>

■ Standard   □ Optional   NCO No Cost Option

While BMW Group Australia has endeavoured to ensure that all information, representations, illustrations and specifications contained in these materials are accurate at the time of publication (22 April 2014), the information is general in nature only. Product features, specifications, models and prices are subject to change without notice. The general information in these materials should always be read in conjunction with information from authorised BMW dealers. To the extent permitted by law, BMW Group Australia excludes all express and implied warranties or guarantees and all liability, whether direct, indirect, special or consequential, arising from negligence or otherwise relating to the use of these materials, any inaccuracies and for any non-compliance by any vehicle with any representation, illustration, specification, description, product feature, colour, or other information contained in these materials.

© BMW Australia Ltd (ABN 11 004 675 129) ("BMW Group Australia") and BMW AG, Munich/Germany. All rights reserved.



# BMW INDIVIDUAL.



True exclusivity is defined by the very highest standards: those that each person sets for themselves. BMW Individual enables you to realise these standards in the car you drive. Let yourself be inspired by the BMW Individual range in which all individual details complement each other perfectly.

		M6 Coupé	M6 Convertible	M6 Gran Coupé
<b>BMW Individual Paintwork</b>				
X02	<b>Citrin Black metallic</b>			
X03	<b>Ruby Black metallic</b>	<input type="checkbox"/>	<input type="checkbox"/>	<input type="checkbox"/>
X04	<b>Moonstone metallic</b>			
X10	<b>Tanzanite Blue metallic</b>			
490	<b>Brilliant White metallic</b> Must be ordered via BMW Group Australia	<input type="checkbox"/>	<input type="checkbox"/>	<input type="checkbox"/>
490	<b>Frozen Brilliant White</b>	<input type="checkbox"/>	<input type="checkbox"/>	<input type="checkbox"/>
490	<b>Frozen Black</b>	<input type="checkbox"/>	<input type="checkbox"/>	<input type="checkbox"/>
	<b>Frozen Blue</b>			
	<b>Frozen Bronze</b>			
	<b>Frozen Cashmere Silver</b>			
	<b>Frozen Grey</b>			
	<b>Frozen Red</b>			
	<b>Frozen Silver</b>			
	Must be ordered via BMW Group Australia			
490	<b>Pure Metal Silver</b> Must be ordered via BMW Group Australia	<input type="checkbox"/>	<input type="checkbox"/>	<input type="checkbox"/>
<b>BMW Individual Interior Trim</b>				
XE5	<b>Fine-wood trim Sycamore, red brown, dark</b>			
XE7	<b>Interior trim Piano Finish, black</b>	<input type="checkbox"/>	<input type="checkbox"/>	<input type="checkbox"/>
XEX	<b>Fine-wood trim Ash-Grain, white</b>			

■ Standard □ Optional NCO No Cost Option

While BMW Group Australia has endeavoured to ensure that all information, representations, illustrations and specifications contained in these materials are accurate at the time of publication (22 April 2014), the information is general in nature only. Product features, specifications, models and prices are subject to change without notice. The general information in these materials should always be read in conjunction with information from authorised BMW dealers. To the extent permitted by law, BMW Group Australia excludes all express and implied warranties or guarantees and all liability, whether direct, indirect, special or consequential, arising from negligence or otherwise relating to the use of these materials, any inaccuracies and for any non-compliance by any vehicle with any representation, illustration, specification, description, product feature, colour, or other information contained in these materials.

© BMW Australia Ltd (ABN 11 004 675 129) ("BMW Group Australia") and BMW AG, Munich/Germany. All rights reserved.

# BMW INDIVIDUAL.

		M6 Coupé	M6 Convertible	M6 Gran Coupé
<b>BMW Individual Full Leather Trim 'Merino'</b>				
ZBC8	Platinum   Black			
ZBOW	Opal White   Black			
ZBP5	Amaro Brown   Black			
ZBP6	Champagne   Black			
ZBWT	Cohiba Brown   Black			
ZBOB	Opal White   Amaro Brown (Gran Coupé only)	NCO	NCO	NCO
Only available in conjunction with BMW Individual roofliner (776 / XD5)				

<b>BMW Individual Options</b>				
3MB	<b>BMW Individual Exterior Line Aluminium satinated</b>	NCO	NCO	NCO
761	<b>BMW Individual sun protection glazing</b> , darker tinted glass for rear and side windows Not available with Climate Comfort laminated glass (356)	□		□
776	<b>BMW Individual roofliner Alantara Anthracite</b>	NCO		NCO
XD5	<b>BMW Individual roofliner Alcantara</b> , matched to colour upholstery when ordered in conjunction with the following: – Platinum   Black (ZBC8) – Amaro Brown   Black (ZBP5) – Champagne   Black (ZBP6) Only available in conjunction with BMW Individual full leather trim 'Merino' (ZB)	NCO		NCO



Experience BMW Individual interactive with the BMW Individual iPad app.

■ Standard □ Optional NCO No Cost Option

While BMW Group Australia has endeavoured to ensure that all information, representations, illustrations and specifications contained in these materials are accurate at the time of publication (22 April 2014), the information is general in nature only. Product features, specifications, models and prices are subject to change without notice. The general information in these materials should always be read in conjunction with information from authorised BMW dealers. To the extent permitted by law, BMW Group Australia excludes all express and implied warranties or guarantees and all liability, whether direct, indirect, special or consequential, arising from negligence or otherwise relating to the use of these materials, any inaccuracies and for any non-compliance by any vehicle with any representation, illustration, specification, description, product feature, colour, or other information contained in these materials.

© BMW Australia Ltd (ABN 11 004 675 129) ("BMW Group Australia") and BMW AG, Munich/Germany. All rights reserved.



## GENUINE BMW ACCESSORIES.

Driving a BMW is always a special experience, but it can be made even more so with Genuine BMW Accessories thanks to their combination of unique ideas, supreme functionality and stunning design. Discover a wide range of innovative solutions, covering areas such as the exterior and interior, communication and information, as well as transportation and luggage compartment solutions.

For more information, please contact your preferred BMW Dealer who will be pleased to advise you on the full range of Genuine BMW Accessories, or visit [bmw.com.au/accessories](http://bmw.com.au/accessories).



**20" Alloy wheels V-Spoke 356**



**Fitted luggage compartment mat with collapsible box**



**USB charger**



**Media Snap-in-adaptor, iPhone 4G**



**LED fog-lights**



**Exterior mirror caps, carbon**



**Travel & Comfort System, Carrier for Apple iPad**



**Luggage compartment tension belt**

This insurance is provided by Allianz Australia Insurance Limited AFSL 234708 ABN 15 000 122 850. Please visit [bmwfinance.com.au](http://bmwfinance.com.au) and read a Products Disclosure statement to decide if these products are right for you.

\*BMW Financial Services is a division of BMW Australia Finance Limited. Australian credit licence 392387. Fees, charges, terms, conditions and approval criteria apply to BMW Financial Services finance products.



## GENUINE BMW SERVICE.

When you buy a BMW, you can look forward to superb service and comprehensive customer care, with a network of dealerships Australia-wide ready to assist you at any time.

Your car informs you of its service requirements via the Condition Based Servicing system. Then simply get in touch with your preferred BMW Dealer who will provide expert care for you and your car.

Staffed by highly trained personnel, your BMW Dealership is equipped with the latest computer-aided information and diagnostic tools. Important data such as the chassis number, mileage and current service requirements are all stored on your car key, ensuring quick assessment of your vehicle's status.

Naturally, your preferred BMW Dealer also has a comprehensive stock of Genuine BMW Parts for any eventuality.

All in all, quality and safety are the essence of BMW Service. Find out more at [bmw.com.au/service](http://bmw.com.au/service)



### BMW ROADSIDE ASSISTANCE & ACCIDENT MANAGEMENT.

To ensure your BMW delivers you with years of uninterrupted driving pleasure, it comes with the most comprehensive roadside care programme in Australia. This service is complimentary for three years, so you can rest assured in the knowledge that assistance is at hand 24 hours a day, 365 days a year.

Should you require assistance, simply dial BMW Roadside Assistance & Accident Management on the exclusive toll-free number: **1800 808 111**.



# BMW FINANCIAL SERVICES.

## Finance, Lease & Insurance.

BMW Group Financial Services is your one stop shop for all your Finance, Leasing and Insurance needs. Each BMW dealership has a dedicated Business Manager who can put together a tailored finance and insurance package, to make getting into your next BMW even easier.

### FINANCE & LEASE.

BMW Group Financial Services offers both loan and lease options to suit your requirements. Whether it is for a company vehicle or a car for your personal use, there are a range of products available to meet your needs.

BMW Financial Services offers competitive rates, flexible terms, and no early termination or monthly account keeping fees\*.

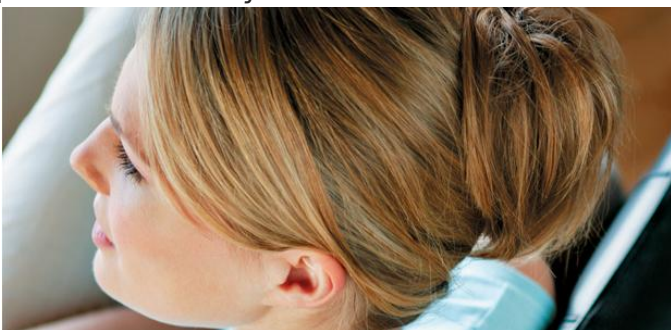
As a BMW Financial Services Customer you also have access to the My BMW Account service which provides you with all your finance contract information 24 hours a day, 7 days a week.

Simply log on at [myBMWaccount.com.au](http://myBMWaccount.com.au)



### INSURANCE.

BMW Insurance has you covered with an outstanding range of products to protect both your BMW and your BMW finance contract. With BMW Insurance you can not only ensure your BMW stays a BMW, but also enjoy peace of mind while you are on the road and off.



Our range of insurance products includes:

- BMW Motor Vehicle Insurance
- BMW Tyre & Rim Insurance
- BMW Extended Warranty Insurance
- BMW Loan Protection Insurance
- BMW Motor Equity Insurance
- BMW Leaseprotect Insurance
- BMW Purchase Price Insurance

Speak to your Business Manager today about our extensive range of Finance and Insurance products.

This insurance is provided by Allianz Australia Insurance Limited AFSL 234708 ABN 15 000 122 850. Please visit [bmwfinance.com.au](http://bmwfinance.com.au) and read a Products Disclosure statement to decide if these products are right for you.

\*BMW Financial Services is a division of BMW Australia Finance Limited. Australian credit licence 392387. Fees, charges, terms, conditions and approval criteria apply to BMW Financial Services finance products.



## BMW DRIVING EXPERIENCE.

If you've ever wondered why a BMW is the Ultimate Driving Machine, a BMW Driving Experience course is for you. If you've ever wondered what an Ultimate Driving Machine is capable of, this is the Ultimate test-drive.

Sign up for a BMW Driving Experience course and you will learn what these remarkable vehicles can really do. More importantly, you will also acquire essential skills that will enhance your driving ability and safety.

BMW Driving Experience was introduced in 1977, the first of its kind initiated by an automotive manufacturer to improve the skills, reactions and awareness of drivers.

Today more than ever, the 3-stage programme offers drivers a positive, exhilarating experience, along with an excellent education and an enthralling opportunity to accelerate their driving abilities. This is all conducted behind the wheel of an efficient and dynamic range of Ultimate Driving Machines.

The aim of the programme is to enhance each participant's driving ability by developing attitudes and skills through a structured sequence of courses. Each course takes participants through an increasingly challenging mix of low and high speed driving exercises, that help them respond effectively in emergency situations and become progressively more confident, safe and enthusiastic drivers.

Our courses are conducted at Australia's leading facilities, including the world renowned Phillip Island Grand Prix Circuit. All BMW Driving Experience courses are supervised by highly-trained instructors under the stewardship of Le Mans and Bathurst winner, Geoff Brabham.

BMW Driving Experience offers a range of courses, from the entry-level Intensive course, to the more advanced and exhilarating M Dynamic. The final BMW Driving Experience course on offer is the pinnacle of all, our exclusive Fascination course.

### BMW Intensive Driving Experience

An exciting introduction into performance driving, designed for confident drivers.

### BMW M Dynamic Driving Experience

After completing our Intensive Training course, drivers can take their skills to another level with this high-performance course designed to test their ability to the fullest.

### BMW Fascination Driving Experience

The last course offered in the BMW Driving Experience Programme. Fascination is the goal to reach for those who complete our Intensive and M Dynamic Driving Experience courses. Drivers apply all of the skills they have learned in previous courses, and have one-to-two tuition with our highly trained BMW Driving Experience Instructors.

To find out more about BMW Driving Experience courses and dates, please call **1800 000 269** or email [bmw-drivingexperience@bmw.com.au](mailto:bmw-drivingexperience@bmw.com.au) or visit [bmw-drivingexperience.com.au](http://bmw-drivingexperience.com.au)

**NOTES.**

**BMW M6 Coupé,  
Convertible  
& Gran Coup**

[bmw.com.au](http://bmw.com.au)



**The Ultimate  
Driving Machine**

While BMW Group Australia has endeavoured to ensure that all information, representations, illustrations and specifications contained in these materials are accurate at the time of publication (22 April 2014), the information is general in nature only. Product features, specifications, models and prices are subject to change without notice. The general information in these materials should always be read in conjunction with information from authorised BMW dealers. To the extent permitted by law, BMW Group Australia excludes all express and implied warranties or guarantees and all liability, whether direct, indirect, special or consequential, arising from negligence or otherwise relating to the use of these materials, any inaccuracies and for any non-compliance by any vehicle with any representation, illustration, specification, description, product feature, colour, or other information contained in these materials.

© BMW Australia Ltd (ABN 11 004 675 129) ("BMW Group Australia") and BMW AG, Munich/Germany. All rights reserved.